



Lebanon National Operations Room Daily Report on COVID-19

Thursday, October 15, 2020

Report #211

Time Published: 10:30 PM

New in the report:

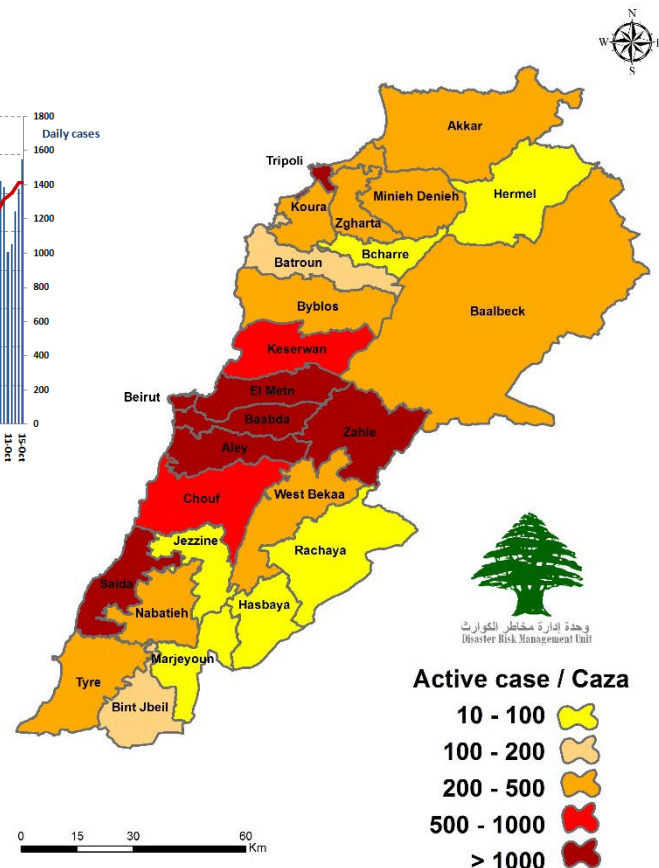
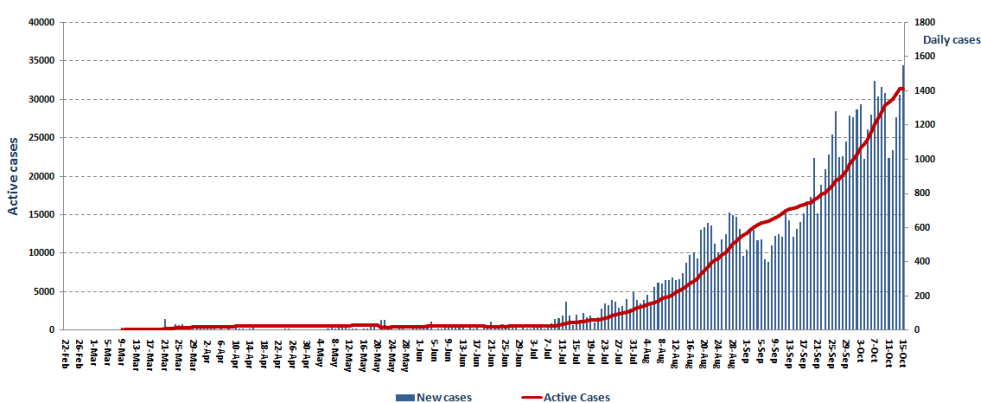
- Memorandum No. 107 / A.M. / 2020 dated 10/14/2020 on the mechanism for controlling the conditions of those in custody and the procedures to be implemented at the level of governorates, districts, municipalities and the Lebanese Red Cross.

1,550 New Cases		58,645 Total Cases since 21.2.2020		501 Total Deaths	25,694 Total Recovered
1,471 Residents	79 Expats	56,776 Residents	1,869 Expats	2 New Deaths	530 New Recovered
1,241 Total Cases in the Health Sector		32,450 Total Active Cases		625 Hospitalized Cases	195 Total Cases in ICU
14 New Cases in the Health Sector		31,825 Cases in Home Isolation		430 Mild Cases	3 New Cases in ICU
973,446 COVID-19 Tests since 21.2.2020		Lebanon Status compared to the World			
749 COVID-19 Tests at Airport within 24 hrs.		12,070 COVID-19 tests for residents within 24 hrs.		Total Cumulative	58,645
				Total Deaths	501
				Deaths percentage	0,85%
				Total recoveries	25,694
					38,947,653
					1,099,641
					2.82%
					29,239,129

Ref: Ministry of Public Health Data

Number of Cases by Location

- 9,865 case is Under investigation



Active case / Caza

10 - 100	
100 - 200	
200 - 500	
500 - 1000	
> 1000	



Beirut	134
Ein Al Mreisseh	2
AUB	1
Ras Beirut	3
Qoreitem	1
Raouche	6
Hamra	16
Ein Al Teeneh	1
Mseitbeh	3
Mar Elias	5
Tallet Al Khayyat	3
Dar Al Fatwa	2
Tallet Al Drouz	1
Zarif	3
Mazraa	13
Borj Abi Haidar	4
Basta Fawka	6
Tariq Jdeedeh	18
Ras Al Nabaa	10
Basta Tahta	1
Mar Michael Nahr	1
Ashrafieh	25
Others	9
Keserwan	61
Sarba	2
Kaslik	3
Zouk Mihael	5
Ghadir	3
Zouk Mosbeh	6
Adonis	4
Haret Sakher	2
Sahel Alma	4
Kfar Yassine	2
Tabarja	3
Adma & Dafneh	3
Bouar	2
Ajaltoun	1
Sehaileh	1
Ein Al Rayhaneh	1
Ghazir	7
Kfar Hbab	1
Kfour	1
Bzommar	1
Qleiaat	1
Ashkout	1
Wata Al Joz	1
Others	6
Koura	6
Kosba	1
Anfeh	2
Ras Masqa	1
Masqa Shimaliya	1
Others	1
Jezzine	3
Kfar Jarra	2
Aramta	1

Chouf	249
Chiah	21
Jnah	4
Ouzai	9
Bir Hassan	3
Ghobeiry	8
Ein Al Remmaneh	14
Forn Al Shubbak	6
Haret Hreik	33
Lailaki	13
Borj Al Barajneh	44
Mreijeh	10
Tahweetet Ghadir	7
Baabda	7
Brazilia	2
Hazmieh	9
Fayadieh	2
Mar Takla	1
Yarze	1
Hadat	24
Loueizy	1
Kfarshima	9
Wady Shahrour	2
Bsaba	4
Abadieh	1
Dhour AL Abadieh	1
Ras Al Metn	1
Jumhour	1
Kneeseh	1
Salima	1
Btekhmay	1
Jwar Al Hoz	2
Kfarselwan	3
Others	3
Chouf	48
Damour	1
Naameh	3
Haret Al Naameh	2
Chhim	9
Mazboud	1
Dalhoun	2
Darayya	3
Anout	1
Barja	7
Jiyyeh	1
Jadra	1
Wedaniyeh	3
Joun	1
Deir Al Qamar	1
Kfar Qatra	1
Baaqleen	3
Ghreefeh	1
Baqaata	2
Niha	1
Btalloun	1
Others	3

Zahleh	106
Mar Michael	1
Rasieh	5
Barbara	2
Maallaqa	4
Karak Nouh	3
Oumara Al Arady	1
Hoch Al Oumara	5
Arady	6
Forzol	1
Qaa Al Rim	3
Ksara	5
Chtoura	1
Jlala	1
Makseh	1
Taalabaya	7
Jdita	5
Saadnayel	9
Qab Elias	10
Bouarej	4
Bar Elias	5
Majdel Anjar	7
Riyak	1
Ali Al Nahry	1
Deir Al Ghazal	1
R'eet	1
Kfarzabad	1
Others	15
Saida	93
Old Saida	1
Bramieh	2
Hlalieh	1
Haret Saida	10
Miyye w Miyye	5
Ein Al Helwe	12
Majdelyoun	2
Aabra	7
Qrayye	1
Bqosta	1
Ein Al Delb	1
Ghazieh	5
Zahrany	1
Maghdoushy	1
Qannareet	1
Kharayeb	1
Sarafand	1
Marwanieh	1
Bnaafoul	1
Arab Tabbaya	1
Anqoun	3
Kfarhatta	3
Others	31
Hermel	1
Hermel	1
Rashayya	2
Rashayya Wady	1
Others	1

Matn	213
Borj Hammoud	15
Nabaa	2
Sin El Fil	18
Jdeidet Al Metn	7
Bouchrieh	7
Dora	4
Rawda	6
Sed Bouchrieh	6
Sabtieh	7
Mar Roukoz	1
Dekwene	19
Antelias	19
Manqlt Mezher	2
Jal El Dib	10
Naqqash	7
Zalka	5
Byaqout	4
Dbayyeh	4
Deir Aoukar	2
Mansourieh	7
Fanar	4
Ein Saadeh	5
Roumieh	2
Bqannaya	2
Bsalim	5
Rabieh	3
QorntChehwan	1
Rabwe	4
Beit Al Chaar	4
Deek El Mahdy	1
Ein Aar	1
Mazrt Yashouh	2
Zikrit	2
Bekfayya	2
Beit Shabab	1
Ein Aalak	1
Broummana	3
Beit Merry	5
Mtein	1
Mshikha	1
Bolonia	1
Dhour Shweir	1
Ein El Qabo	1
Baskinta	1
Others	7
Zgorta	33
Ras'een	2
Kfarhata	1
Majdlayya	1
HaretJadeedah	2
Alma	1
Ehden	1
aintoura	1
Al Haref	1
Meryata	4
Others	7

Aleyh	91
Al Amroussieh	5
Hay El Sillom	11
Khaldeh	5
Al Oumara	13
Deir Qoubel	2
Aramoun	20
Baawarta	2
Bshamoun	4
Bleibel	2
Aley	8
Ein Hala	1
Kahale	3
Qmatieh	1
Ein Al Jdeedeh	4
Baysour	2
Chanay	1
Saoufar	1
Btater	1
Others	5
Tripoli	64
Zaytoun	3
Bab Al Ramel	1
Qebbeh	5
Tabbaneh	1
Mina	7
Bsatin Al Mina	18
Qalamoun	3
Beddawy	7
Others	19
baalbek	28
baalbek	4
Ras el Ein	2
Doures	1
Kfar Dan	1
Naby Rashada	1
Arsal	2
Beit Chama	1
Temnin Al Tahta	1
Chmestar	1
Tarayya	1
Naby Sheeth	4
Others	9

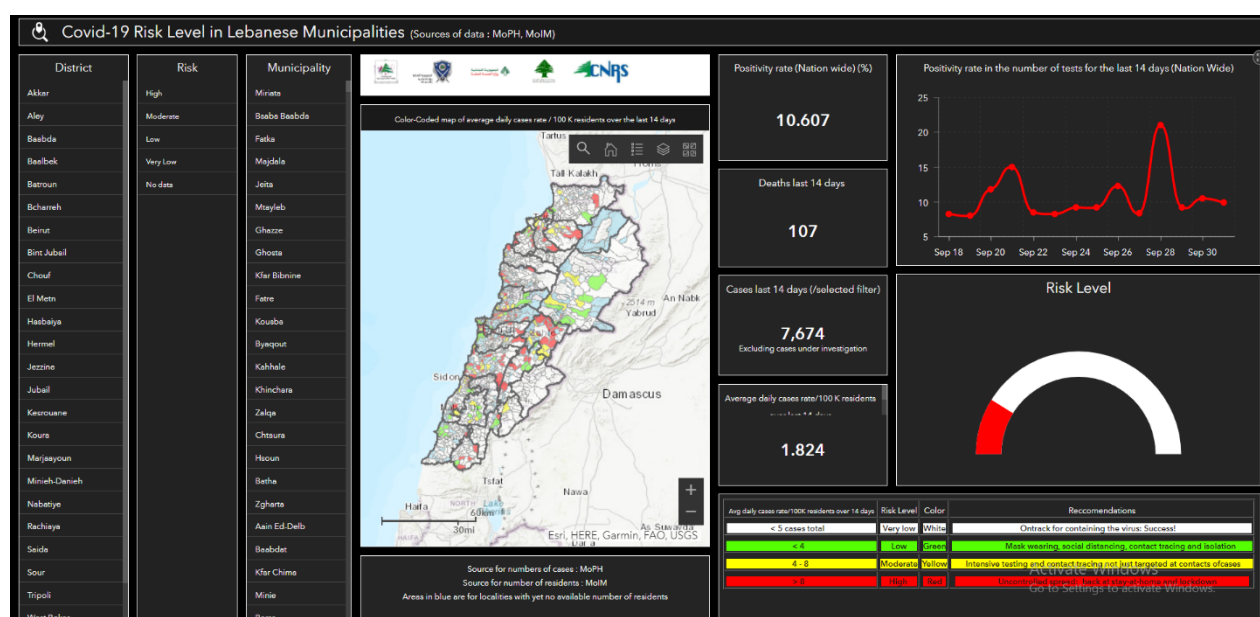
Byblos	32
Byblos	7
Mastita	2
Blat	1
Eddeh	1
Amshit	2
Halat	3
Hosrayel	1
Ehmej	2
Ras Osta	1
Hboub	4
Hsarat	1
Bekh'aaz	1
Others	6
Menyh Dunniyyeh	16
Nabe Youshaa	1
Menyeh	5
Seer Dunniyyeh	1
Safeereh	1
Qarsita	1
Deir Nabbouh	1
Bakh'oun	6
Western Beqaa	10
Kherbet Qanafar	1
Aana	1
Manara	1
Hoch Al hareemeh	1
Sweiry	2
Marej	1
Rawda	2
Others	1
Bint Jeil	12
Bint Jbeil	1
Yaroun	1
Rmeish	5
Harees	4
Debel	1
Marjeyoun	3
Ebl Al Saqy	1
Touleen	1
Others	1

Nabateih	40
Al Tahta	1
Al Meidan	1
Al Fawka	2
Kfar Al joz	2
Kfar Remman	1
Habbouch	2
Arab salim	3
Houmin Al Tahta	1
Sharqiyeh	1
Toul	3
Harouf	2
Dweir	3
Jebsheet	1
Adsheet Shqeef	2
Aabba	1
Qsaybeh	1
Qaaqaa'iyyet Jesr	2
Kfar Seer	1
Western Seer	1
Others	9
Tyre	40
tyre	1
Bass	1
Borj Al Chemaly	7
Wady Jilo	1
Qana	2
Maarakeh	1
Maaroub	2
Saddeeqeen	1
Ein B'aal	1
Bazourieh	4
Chehabieh	3
Sreefa	1
Abbasiyeh	1
Jbal Al Botm	1
Borj Rahhal	1
Sheeheen	1
Others	11

Akkar	39
Halba	3
Sheikh Mhmad	1
Nafiseh	1
Mashha	2
Borj Al Arab	1
Borj	1
Old Akkar	1
Houchab	1
Heissa	1
Qlei'aat	2
Abboudieh	1
Bebnin	5
Nahr Al Bared	3
Abdeh	1
Berqayel	3
Qaryat	1
Fneidek	1
Rahbeh	2
Shadra	1
Moghraqa	1
Andkit	1
Nasrieh	1
Others	4
Batroun	13
Batroun	6
Salaata	2
Shekka	1
Hardeen	1
Others	3

Others	213
---------------	------------

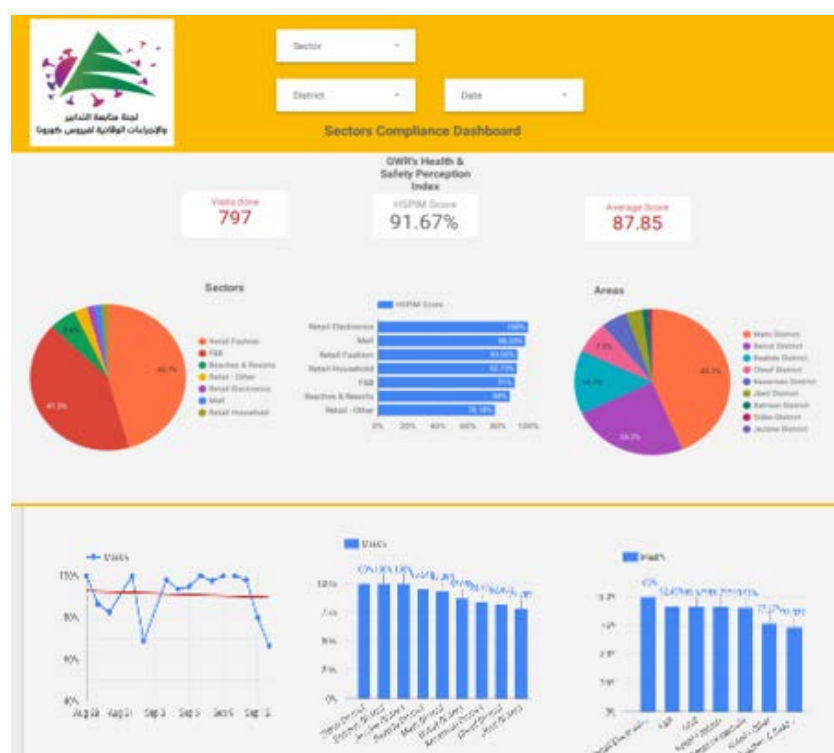
The Online platform to measure the level of risk of the spread of the new Corona virus



This interactive platform allows you to know the level of risk of spreading the kurna virus according to districts, based on the number of cases registered daily and the number of residents in each district. For more information on a daily basis, you can access the following link:

<https://bit.ly/DRM-RiskLevelInMunicipalities>

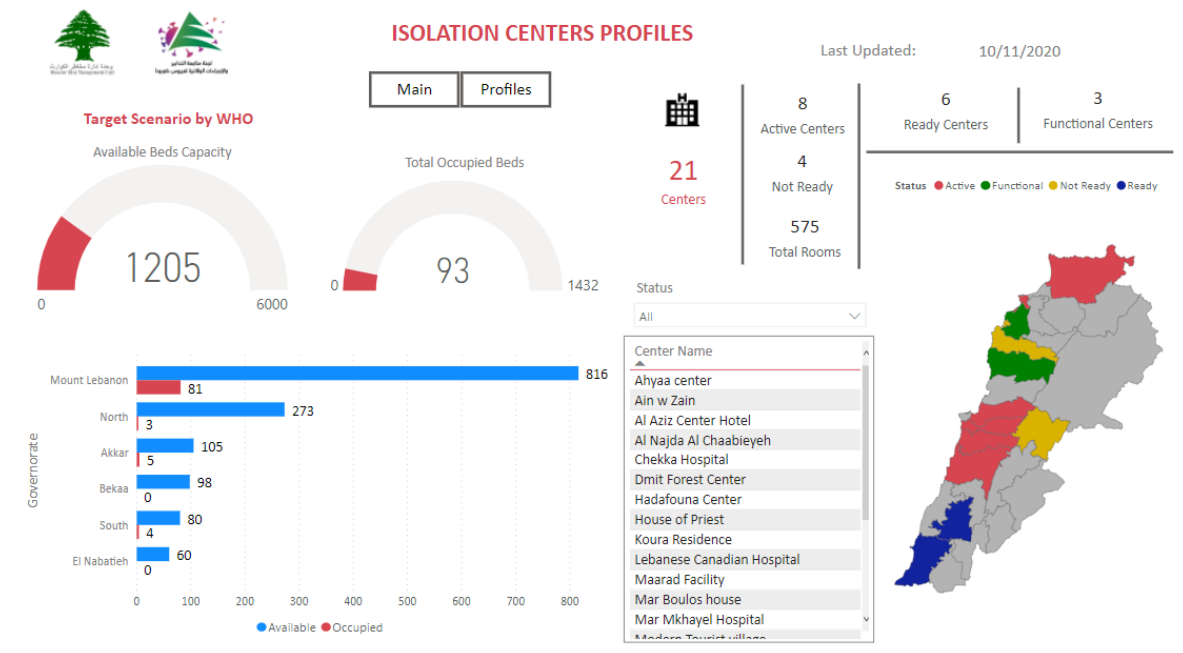
Online platform to track sector commitment in general mobilization procedures



Based on the recommendation issued by the National Committee for Follow-up of Preventive Measures and Measures to Confront the Coronavirus to open all sectors, provided that the general mobilization procedure (safe distance, muzzle, and hand sterilization) be applied, a special electronic platform was created that allows monitoring and measuring the percentage of commitment by various sectors on an ongoing basis. The detailed results can be viewed directly at the following link:

<http://bit.ly/covidsectordata>

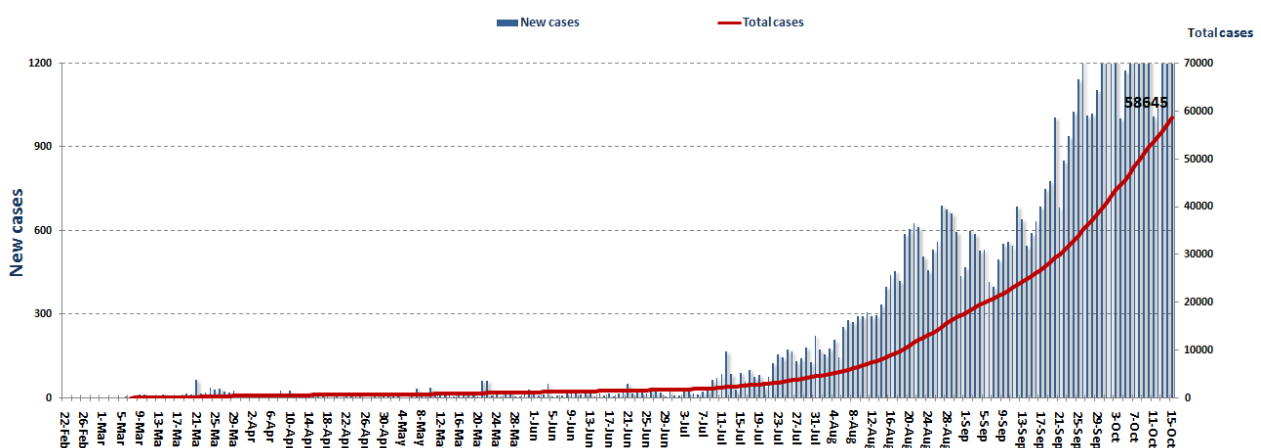
Occupancy rate of isolation centers for cases infected with Coronavirus



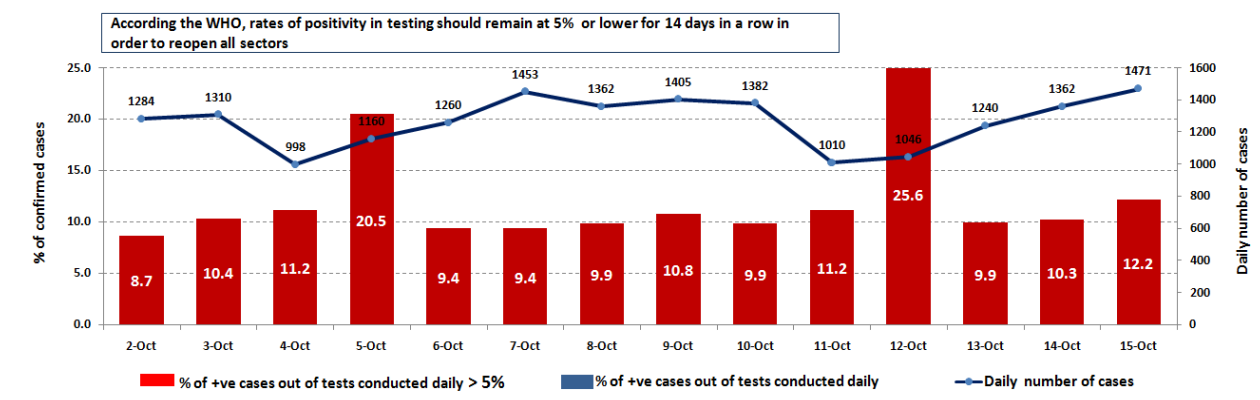
For more information about the isolation centers' distribution and the percentage of their occupancy, enter the following link: <http://bit.ly/DRM-IsolationCentersProfiles>

Note: These centers have been equipped in cooperation between the National Committee for Follow-up of Preventive Measures and Measures to Confront the Coronavirus and Governors and Municipalities, the United Nations Development Program, the World Health Organization, UNICEF, the Ministry of Public Health, the Syndicate of Nurses in Lebanon and the Syndicate of Specialists in Social Work.

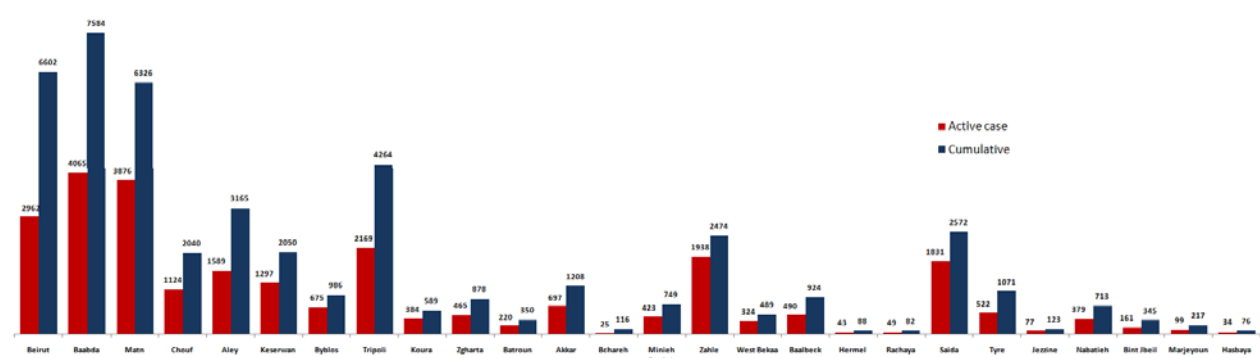
Cases per day



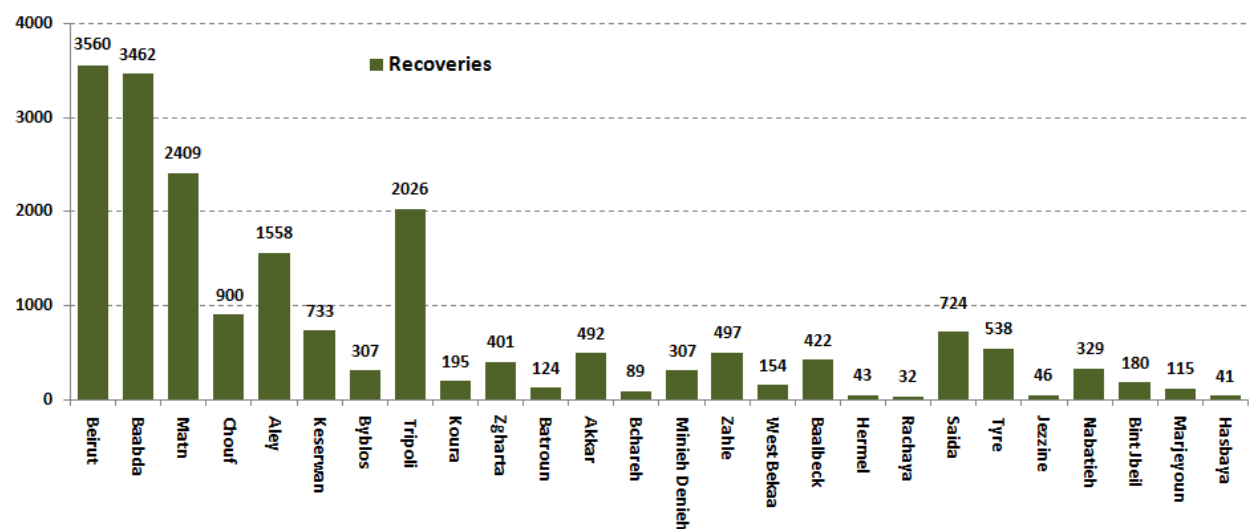
The percentage of positive cases out of the number of daily checks (2-15 October 2020)



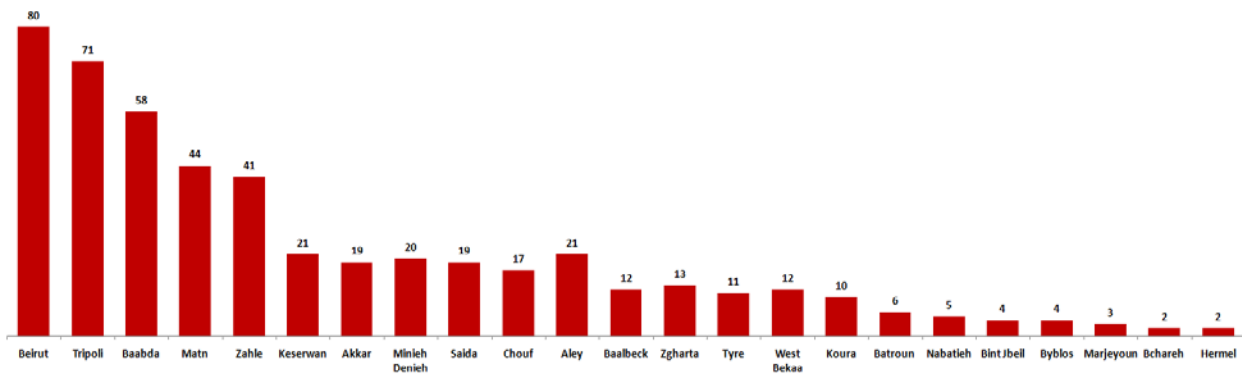
Distribution of Active Cases by Districts



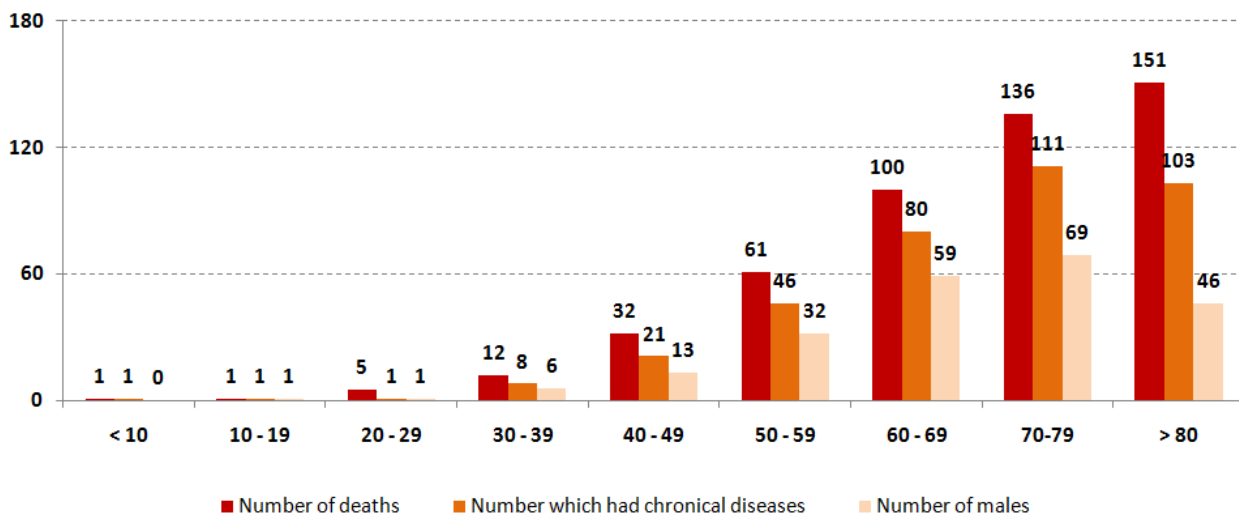
Recoveries



Distribution of deaths by Governorates



Distribution of deaths by Age

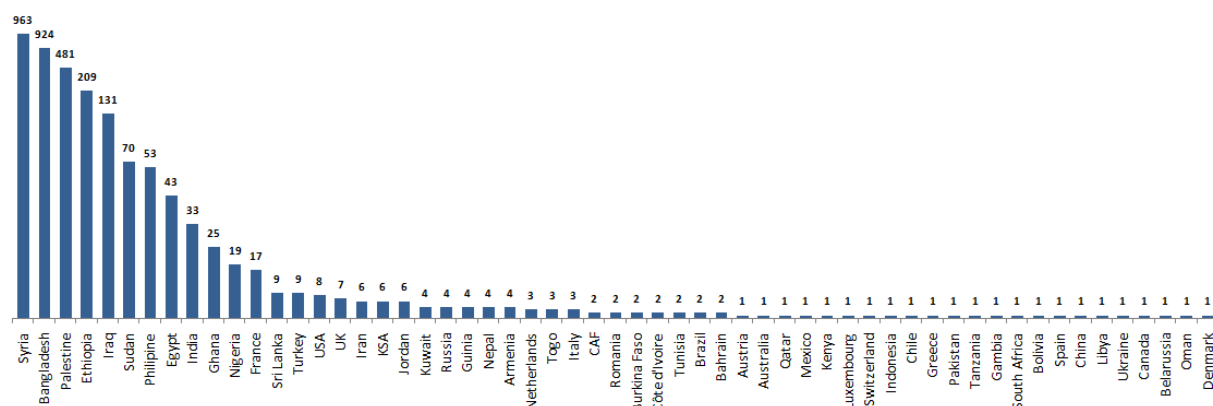


The distribution of the recorded deaths during the past 24 hours

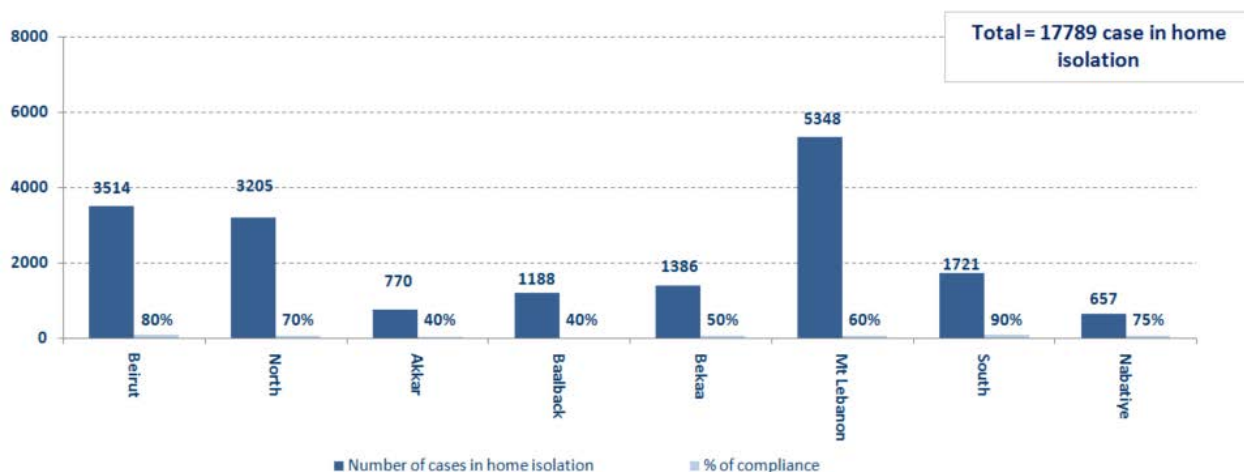
Hospital	Residence	Gender	Age	Chronic
Saint George- Hadath	Baabda	Male	32	No
Baabda Government	Beirut	Female	84	Yes

Distribution of cases by nationality

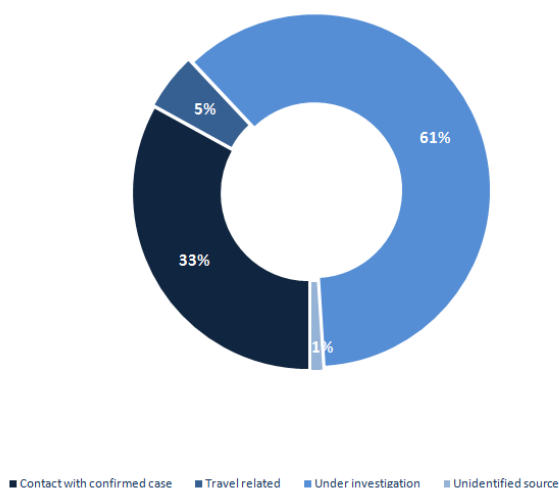
Lebanese : 54417 cases out of 58645 (88%)



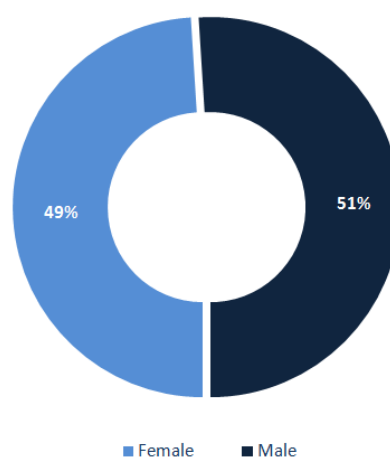
Number of individuals in home isolation and percentage of commitment to isolation



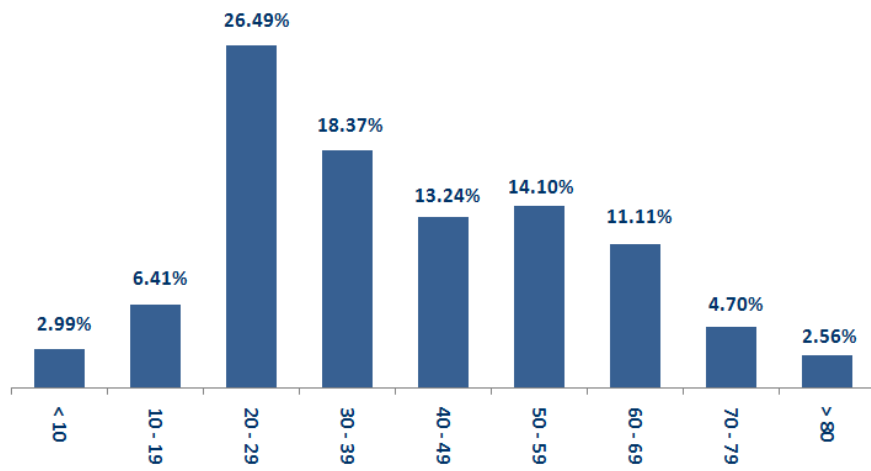
Exposure



Distribution according to gender



Distribution by age



Decisions and actions taken – 10/15/2020

Ministry of Public Health

Within the framework of implementing its strategy to increase the number of intensive care beds, the Ministry clarified that the percentage of those in need of intensive care in Lebanon ranged between five and six per thousand, but the danger is the limited number of intensive care beds, as the Ministry was able to add 61 beds in the last two weeks in government hospitals in various Lebanese regions.

The Ministry of Public Health reports that PCR checks have been completed for flights that arrived in Beirut and were conducted at the airport on 10/11/2020, in addition to the first batch of flight checks that arrived in Beirut on 10/12/2020, where eighty-four (84) positive cases were distributed. On the following flights:

Arriving from	Company	Flight Number	Number of Positive Cases
10/11/2020			
Baghdad	MEA	323	3
Istanbul	MEA	268	3
10/12/2020			
Adana	PEGASUS	6700	1
Istanbul	MEA	266	2
Al Najaf	MEA	327	36
Al Najaf	Iraqi Airways	139	22
Al Najaf	MEA	1321	16
Athens	MEA	254	1
Total			84

Lebanese Red Cross

234,025	Number of PCR tests transferred to laboratories	49,633 (776 New)	Number of additional ambulance centers ready to respond	48	ambulance centers	6,385 (64 New)	cases transferred to hospitals
166	Number of volunteers trained to transfer PCR tests	1,498	Number of trained paramedics	8,760 (6 New)	total number of respondents	84,244 (1832 New)	number of those benefiting from awareness *sessions
967	The number of university volunteers trained to follow up on prevention measures in companies and institutions	291	Number of university volunteers trained to conduct awareness sessions	550	total LRC volunteers for covid19	8,646 (6 New)	number of trained managers for isolation centers
4,280 (2 New)	Number of beneficiaries from educational electronic platforms COVID-19	95,639 (86 New)	Number of distributed equipment	1,242,498	total distributed posters, brochures, and flyers on covid19 prevention	620 (6 New)	number of prisons that have been disinfected

General Directorate of Internal Security Forces

The number of seizure records during the past 24 hours					The total number of records since 03/08/2020	
Written records of violating institutions (absorptive capacity and preventive measures)				0		
Written records of persons violating the decision to wear a mask				0	Beirut	20,848
Written records of people violating the general mobilization decision (Aragil* and social distancing)				321	Mount Leb	19,656
Total				321	Beqaa	8,333
					North	7,307
Beirut	Mount Leb	Beqaa	North	South	South	7,314
0	97	50	71	103	Total	63,457

General Directorate of State Security

- Reporting new injuries to the General Directorate of State Security, bringing the total number of injured to 67 cases.
- Report on the opening of schools in various Lebanese regions in accordance with the decision of the Ministry of Education and Higher Education.
- Reporting the percentage of compliance with the general mobilization decision in the governorates, which came as follows within the past 24 hours:

Beirut	South	North	Akkar	Beqaa	Nabateih	Baalbek Hermel	Mount Leb
50%	51%	45%	45%	47%	50%	N/A	48%

General Directorate of General Security

- A statement about the closure of the two pens of Antelias and Bikfaya due to the presence of Coronavirus infections.
- Reporting the commitment of the municipalities to the decision of the Minister of Interior and Municipalities:

Municipalities that abided by the decision	Municipalities didn't abide by the decision
Niha, Qaa al-Reem, Saadnayel, Ra'ayit, Mashghara, Aammik, Kfar Zabad, Hosh Halan, Terbol, Kobayat, Sheikh Taba, Majdala, Chekka, Hamat, Batroun, Hosh, Bturatij, Busrama, Anfa, Barsa, Minya, Shakra, Roumine, Rmeish, Double, Majdal, Bhamdoun, Al-Azounieh, Kahhala, Souk Al-Gharb, Ain Dara, Camel Al-Saqi, and Mims.	Rayak, Ferzol, Gaza, Mansoura, Khirbet Kanafar, Bar Elias, Chtoura, Al Muhammarah, Qarsuna, Kafarbenin, Barja, Za'ariyah, Anout, Shehim, Rumaila, Al Jahiliya, Kfar Rahim, Deir Al Qamar, Batloun, Batma, Khuraiba, Niha, and Houmal.

- Follow up the implementation of the required security and preventive measures at the airport, ports and border crossings.
- Reporting cases registered in the various districts and cases in home quarantine.

Ministry of Public Works and Transportation

Departing Flights		Arriving Flights	
Number of Flights	35	Number of Flights	34
Number of Departing Individuals	3,804	Number of Arrivals	3,046

Port	Entered			Left		
	Import	Direction	#	Export	Direction	#
Beirut	Oil	Greece	1			
Tripoli	Containers	Tartous	1	Containers	Turkey	1
Zahrani	Fuel Oil	Tripoli	1			
Jouneih	Chemical Materials	Turkey	1			
Total			4			1

General announcements

The Ministry of Interior and Municipalities issued Memorandum **No. 107 / A.M. / 2020** on **10/14/2020** on the mechanism for controlling the conditions of the quarantined and the procedures to be implemented at the level of the governorates, districts, municipalities, and the Lebanese Red Cross, which was mandated to follow up the conditions of those quarantined in homes through its representatives deployed in Various governorates and districts. The most prominent actions mentioned in the memorandum:

• **Governors:**

- Coordination with the Red Cross through the representative specified in the memorandum.
- Asking the district administrators to inform the municipalities of the duties of the delegates of the Lebanese Red Cross to ensure proper implementation and coordination.
- Requesting the district mayors to provide the municipalities and representatives of the Red Cross with all information about the quarantined persons.
- Follow up on the conditions of the basic quarantine centers specialized for the injured who do not need health care.

• **Kaa'makam:**

- Follow up the conditions of quarantined quarantine and approved quarantine centers in the towns that fall within their scope of work, in coordination with the concerned municipalities.
- Coordinating the work of the judiciary doctor, delegates and volunteers of the Red Cross, and the municipal work teams.

• **Mayors:**

- Ensure that quarantined persons adhere to quarantine procedures and instructions in coordination with representatives of the Red Cross.
- Training a rapid intervention team to transfer infected cases to quarantine centers or hospital.
- Coordination with representatives of the Red Cross to confirm information about all interdicted cases and monitor the development of their conditions.

• **Lebanese Red Cross:**

- Training teams of volunteers from villages and towns to raise awareness about quarantine and prevention measures.
- Follow up the conditions of the quarantined in all Lebanese regions through delegates and ensure their commitment to the required procedures in coordination with the municipality.
- Providing the quarantined and their families with clear instructions and instructions on how to act during the home quarantine and when any symptoms appear

Implementation of the decision issued by the Ministry of Interior and Municipalities **No. 1252 on 10/13/2020** related to amending the schedule of villages and towns that have been closed due to the high number of Coronavirus infections in them, as the towns of Naqoura, Jal el Dib, Za'aruriya, Batroun, Roumieh, Bikfaya - Al-Muhaiditha are canceled. Bint Jbeil, from the attached table in Resolution **No. 1250 issued on 10/11/2020**, and the towns of Bakhoun, Naameh and Haret Al-Naameh shall be added to the table attached to the decision. Provided that consideration will continue to restore the situation to normal in the closed towns and villages, based on the results of the examinations

Implementing the decision issued by the Ministry of Interior and Municipalities **No. 1250 on 10/11/2020** related to the closure of some villages and towns due to the high number of cases of Coronavirus in them, based on the recommendations of the Committee for Follow-up of Measures and Preventive Measures of Coronavirus.

Note: The decisions can be found at www.drm.pcm.gov.lb

Examples of lack of adherence to safety measures

Failure of some municipalities to abide by the Ministry of Interior and Municipalities Decision No. 1025/2020 related to the closure of towns that have a high risk of the spread of the epidemic.

- Demand gatherings and demonstrations.
- Failure to comply with the preventive measures and procedures required in several stores and markets (putting on a muzzle or face mask, sterilizing hands, maintaining a safe distance).
- Non-compliance with the 50% occupancy rate in several restaurants and amusement game centers.
- Gatherings for social events.
- Failure of those in contact with confirmed cases to adhere to home isolation procedures until the results of the laboratory tests are issued.

If you feel any symptoms, call directly the hotline of the Ministry of Public Health: 1214 or 01/594459

A list of the laboratories accredited by the MoPH to conduct PCR tests

المختبرات الحكومية المؤهلة لإجراء التشخيص المخبري لفيروس كورونا بطريقة الـ RT-PCR

المختبر	الموقع
مستشفى رفيق الحريري الجامعي RHUH	بيروت
مستشفى حيا الحكومي	حيا
مستشفى طرابلس الحكومي	طرابلس
مستشفى البترون الحكومي	البترون
مستشفى فتوح كسروان الحكومي (البوار)	كسروان
مستشفى نبيه بري الحكومي الجامعي	البيطية
مستشفى تينين الحكومي	تينين
مستشفى بنت جبيل الحكومي	بنت جبيل
مستشفى بعلبك الحكومي	بعلبك
مستشفى الرئيس الياز اليراي الحكومي	زحلة

مختبرات المستشفيات العسكرية

بيروت	المستشفى العسكري المركزي في بيروت Hôpital Militaire Central
-------	---

المختبرات المؤهلة لأخذ عينات "المسحات الأنفية" بطريقة Drive- thru

بيروت	مختبر ميديكال دياغنوستيك تريتمنت سنتر (الحمراء) Medical Diagnostic Treatment Center (MDTC)
بيروت	مختبر ميد لآب MedLab SAL CIC ALS (الحمراء – الجبلان)
بيروت	مختبرات عيتاني Itani Medical Laboratories (المزرعة)
الأشرافية	مختبر أ ب سي ABC Laboratories
الشياح	مختبرات معوض الطبية Mouawad Medical Laboratory
الشياح	مختبرات الشياح (د. فؤاد ربحان) Rihan Medical Center
المنصورة	مختبر إكسبرت لآب Expert Lab
بعلبك	مختبر لايف لآب Life LAB
رياق	مستشفى الرياق Riyak Hospital

المختبرات الخاصة المؤهلة لإجراء التشخيص المخبري للفيروس كورونا بطريقة RT-PCR

الموقع	المختبر
بيروت	مستشفى الجامعة الأميركية AUBMC
بيروت	مستشفى أوتيل ديو الجامعي Hotel-Dieu de France (HDF)
بيروت	مختبرات رودولف ميريو (الجامعة اليسوعية – المتحف) Laboratoire Rodolphe Mérieux (Université Saint-Joseph)
بيروت	مستشفى القديس جاورجيوس الجامعي Saint-George Hospital - UMC
بيروت	مستشفى المقاصد Makassed General Hospital
بيروت	مستشفى رزق الجامعي LAU Medical Center - Rizk Hospital
بيروت	مستشفى اللبناني الجعيتاوي الجامعي Hôpital Libanais Geitawi - CHU
بيروت	مستشفى الوردية Hôpital Notre-Dame du Rosaire
بيروت	مختبر مركز الأطباء Doctor 's Center
بيروت	مختبر فونتا (الحمراء) Fontana Laboratories
بيروت	مختبر الأمن العام (العدلية)
بيروت	مختبرات جبر وغرة Laboratoire Jabre-Ghorra
بيروت	مختبر السان مارك Saint Marc Medical & Diagnostic Center
الغيري	المختبرات الحديثة Laboratoire Moderne (Modern Lab- Berjaoui)
الغيري	مستشفى الساحل Sahel General Hospital (SGH)
الغيري	مستشفى الزهراء الجامعي
برج البراجنة	مستشفى الرسول الأعظم Al Zahraa Hospital - UMC
حارة حريك	مستشفى بهمن Bahman Hospital Al Rassoul Al Aazam Hospital
حارة حريك	مختبر ناتيونال دياغنوستيك سرفيس كومباني National Diagnostic Services Company (NDSC)
المرجة	مختبر الدكتور محمود عثمان - مركز التحاليل الطبية Medical Diagnostic Center
الجناب	مختبر أميريك دياغنوستيك سنتر American Diagnostic Center (ADC)
بعنا	مستشفى جبل لبنان Mount Lebanon Hospital
بعنا	مستشفى السان جورج الحدث Hôpital Saint-George – Hadath
بعنا	مختبر الهادي Al Hadi Laboratory
بعنا	مختبر INOVIE-Liban

Hôpital du Sacré- Coeur	مستشفى قلب يسوع	الحازمية
Clinigene	مختبر كلينيجان	الحازمية
Hôpital Dr.Samir Serhal	مستشفى سرحال	المن
Transmedical for Life	مختبر ترانسيميديكال فور ليف	المن
Haroun Hospital	مستشفى هارون	الزلفا
Bellevue Medical Center (BMC)	مستشفى بلفو	المنصورة
Hôpital Albert Haykal	مستشفى هيكال	الكورة
Centre Hospitalier du Nord (CHN)	مركز الشمال الاستشفائي	زغرتا
Mazloum Hospital	مستشفى المظلوم	طرابلس
Al Mounla Hospital	مستشفى المنلا	طرابلس
Nini Hospital	مستشفى النيني	طرابلس
LMSE – المعهد العالي للدكتوراه، الجامعة اللبنانية	مختبر ميكروبيولوجيا الصحة والبيئة	طرابلس
CHU - Notre-Dame des Secours	مستشفى سيدة المعونات الجامعي	جبيل
Lab Akiki & Boulos	مختبر عقيقي ويولس	جبيل
Centre Médical Wakim	مختبر واكيم	جونبة
Ain Wazein Hospital	مستشفى عين وزين	الشوف
Hammoud Hospital UMC	مستشفى حمود الجامعي	صيدا
Al Karim Medical Laboratory (KML)	مختبر الكريم	صيدا
Sheikh Ragheb Harb Hospital	مستشفى الشيخ راغب حرب	البيقنة
Sabbah Diagnostic Center (SDC)	مختبر السباح	البيقنة
Jabal Amel Hospital	مستشفى جبل عامل	صور
Mashrek Diagnostic Center (MDC)	مختبر المشرق	صور
Dar Al Amal University Hospital	مستشفى دار الأمل الجامعي	بعلبك
Khoury General Hospital	مستشفى خوري	زحلة
Medical Care Center (MCC)	مختبر ميديكال كير سنتر	زحلة