



# Lebanon National Operations Room Daily Report on COVID-19

Tuesday, December 15, 2020

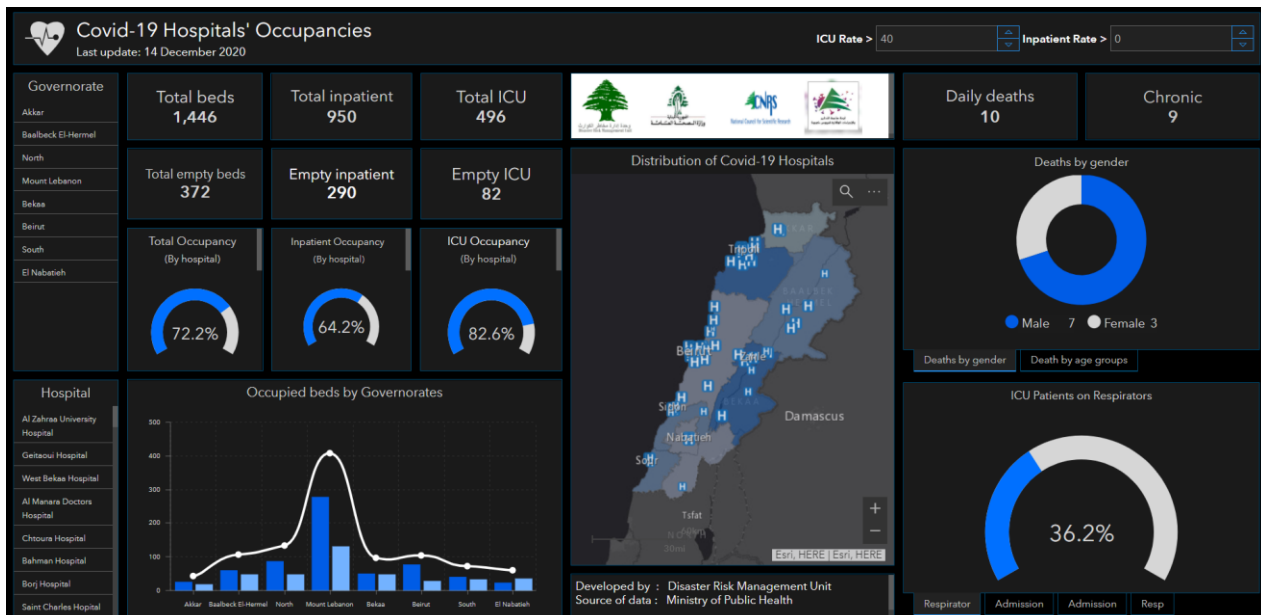
Report #272

Time Published: 08:00 PM

<b>1,264</b> New Cases		<b>148,877</b> Total Cases since 21.2.2020		<b>1,223</b> Total Deaths		<b>104,207</b> Total Recovered		
<b>1,253</b> Residents	<b>11</b> Expats	<b>145,830</b> Residents	<b>3,047</b> Expats	<b>13</b> New Deaths		<b>1,150</b> New Recovered		
<b>72</b> Deleted Status due to its recurrence	<b>1,849</b> Total Cases in the Health Sector		<b>43,447</b> Total Active Cases		<b>990</b> Hospitalized Cases			
<b>12.3%</b> AVG Positivity rate	<b>9</b> Cases in the Health Sector		<b>42,457</b> Cases in Home Isolation		<b>150</b> Ventilated Cases	<b>0</b> New Cases in ICU	<b>406</b> Total cases in ICU	
<b>1,663,538</b> COVID-19 Tests since 21.2.2020		<b>Lebanon Status compared to the World</b>						
<b>771</b> COVID-19 Tests at Airport within 24 hrs.	<b>13,216</b> COVID-19 tests for residents within 24 hrs.		<b>Total Cumulative</b>		<b>148,877</b>		<b>73,452,304</b>	
			<b>Total Deaths</b>		<b>1,223</b>		<b>1,633,936</b>	
			<b>Deaths percentage</b>		<b>0,81%</b>		<b>2.23%</b>	
			<b>Total recoveries</b>		<b>104,207</b>		<b>51,542,762</b>	

Ref: Ministry of Public Health Data

## Occupancy rate of COVID-19 Beds and Availability



For daily information on all the details of the beds distribution availability for Covid-19 patients among all governorates and according to hospitals, kindly check the dashboard link:

Computer : <https://bit.ly/DRM-HospitalsOccupancy-PC> Phone: <https://bit.ly/DRM-HospitalsOccupancy-Mobile>

## Distribution of Cases by Villages

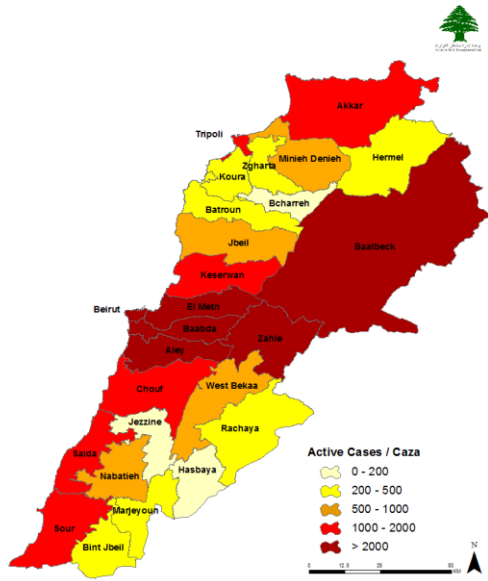
Beirut	88	Baabda	191	Maten	171	Chouf	74	Keswen	52	Aley	75
Ain Mraisseh	2	CHIYAH	11	BORJ HAMMOUD	6	CHHM	12	JOUNIEH SARBA	4	EL AAMROUSSIYEH	4
Ras Beyrouth	1	JNAH	7	NABAA	2	DALHOUN	2	JOUNIEH KASLIK	1	HAY ES SELLOM	7
Manara	1	OUZAAI	3	SINN FIL	5	DARAIYA	2	ZOUK MKAYEL	4	CHOUEIFAT QOUBBEH	1
Qreitem	1	BIR HASSAN	2	JISR BACHA	1	KETERMAYA	1	JOUNIEH GHADIR	2	KHALDEH	3
Raoucheh	5	GHAYREH	15	JDAIDET MATN	6	AANOUT	1	ZOUK MOSBEH	5	CHOUEIFAT OUMARA	15
Hamra	7	AIN ROUMMANE	8	BAOUCHRIYEH	5	SIBLINE	2	ADONIS	3	DEIR QOUBEL	1
Ain Tineh	1	FURN CHEBBAK	4	DAOURA	4	BARJA	16	HARET SAKHR	2	AARAMOUN	9
Msaibeh	2	HARET HREIK	52	RAOUDA BAOUCHRIYE	3	BAASSIR	2	SAHEL AALMA	1	BCHAMOUN	6
Ouata Msaibeh	1	LAYLAKEH	5	SAD BAOUCHRIYEH	3	JIYEH	1	TABARJA	2	AIN AANOUB	5
Tallet Khayat	2	BORJ BRAJNEH	29	SABTIYEH	2	JADRA	1	ADMA OUA DAFNEH	1	BDADDOUN	1
Tallet Drouz	1	MREIJEH	3	DEIR MAR ROUKOZ	1	OUADI EZ ZAYNI	1	SAFRA	2	AALEY	5
Sanayeh	1	BAABDA	5	DEKOUANEH	15	OUARDANIYEH	1	BOUAR	2	KAHHALEH	1
Zarif	2	HAZMIYEH	3	ANTELIAS	11	JOUN	2	AAJALTOUN	2	BAYSSOUR	2
Mazraa	7	HADATH	27	NAQQACH	2	MGHAYRIYEH	1	BALLOUNEH	1	BINNAY	2
Borj Abou Haidar	1	LOUAYZEH	1	ZALQA	5	BEIT ED DINE	1	SHAYLEH	2	AABEY	1
Basta Faouqa	7	JAMHOUR LOUAIZEH	2	BYAQOUT	4	DEIR EL QAMAR	1	AIN ER RIHANEH	2	KFAR MATTA	2
Tariq Jdideh	6	KFAR CHIMA	1	DBAYEH	2	BRIH	1	GHAZIR	1	MAJDEL BAANA	1
Horch	1	OUADI CHAHROUR	1	MANSOURIYEH	7	MGHAYREH	2	KFAR HBAB	1	SAOUFAR	1
Ras Nabaa	4	BSABA	2	FANAR	2	BAAQLINE	5	HARISSA	1	BTATER	1
Bachoura	1	RAS MATN	1	AIN SAADEH	4	DEIR DOURIT	1	YACHOUCHE	2	AAZZOUNIYEH	1
Basta Tahta	7	QSAIBEH	1	AIN NAJM	1	AINBAL	1	QLEIAAT	1	OTHER	6
Zqaq Blat	1	DEIR HARF	1	ROUMIEH	11	GHAZIR	1	AACHQOUT	1	Zgharta	4
Rmeil	4	AARAIYA	1	BOENNAYA	1	JAHLIYEH	1	FAYTROUN	3	MEJDLAIYA	1
Achrafiyeh	22	HAMMANA	1	BSALIM	12	BOTMEH	1	KFAR DIBIANE	1	AALMA	1
Other	20	FALOUGHHA	1	NABAY	1	BEQAATA	1	HRAJEL	2	AAQABET SEBAAL	1
Akkar	83	OTHER	4	MTAYLEB	1	AIN OUZAIN	3	OTHER	3	OTHER	1
HALBA	3	Jbeil	22	RABIYEH	1	BAADARANE	1	Minieh Denieh	25	Batroun	14
JDAIDET EJ JOUMEH	1	JBAYL	6	QORNET CHEHOJANE	2	KHREIBEH	1	BEDDAOUI	2	BATROUN	7
DAOURA	1	MASTITA	1	RABOUEH	2	KAHLOUNIYEH	1	MADINEH EJ JDIDEH	2	KFAR AABIDA	1
ZOUARIB	2	BLAT	1	BRAYJ	1	KFAR NABRAKH	1	CAMP BEDDAOUI	2	CHIKKA	1
MINYARA	1	AAMCHIT	1	BEIT ECH CHAAR	2	BATLOUN	1	DEIR AAMMAR	2	BIJDARFIL	1
KARM AASFOUR	1	HALATE	1	AIN AAR	1	BAROUK	4	MINIEH	6	HAMAT	1
QANTARA	1	FIDAR	1	MAZRAAT YACHOUAA	3	OTHER	1	SIR ED DANNIYEH	3	TANNOURINE TAHTA	1
MACHHA	4	JEDDAYEL	1	DEIR TAMICH	1	West Bekaa	22	BQARSOUNA	2	OTHER	2
AARQA	1	KFOUN	1	BIKFAYA	2	MACHGHARA	3	TARANE	1	Rachaya	6
BQERZLA	1	GHALBOUN	3	BEIT CHABAB	1	KHIRBET QANAFAR	1	MARKEBTA	3	RACHAIYA EL OUADI	1
DEIR DALLOUM	1	HBOUB	2	SAQIET MISK	1	AANA	2	BAKHAOOUN	2	RACHAIYA EL FAOUQA	1
AAIYAT	1	HSARAT	2	MAYASSEH	2	JOUBB JANNINE	1	Zahle	80	DAHR EL AHMAR	1
AIN YAAQOUB	1	QARTABA	2	AIN KHARROUBEH	1	KAMED EL LAOUZ	2	HAOUCH ZARAANEH	1	RAFID	1
BEZBINA	3	Tripoli	48	HIMLAYA	1	BAALLOUL	1	ZAHLEH EL BERBARA	1	OTHER	2
KHREIBET EJ JINDI	1	TRABLOUS ZEITOUN	7	AIN AALAQ	2	GHAZZEH	3	ZAHLEH MAALLAQA	2	Saïda	78
BEIT EL HAJJ	1	TRABLOUS ET TALL	3	AATCHANEH	3	QARAAOOUN	1	KARAK NOUH	2	SAIDA EL OUASTANI	1
MASSAOUDIYEH	1	TRABLOUS QOUBBEH	6	JOUAR	1	MANARA	7	MAR ANTONIOS	1	SAIDA EL QADIMEH	8
TALL MEAAYANE	1	TRABLOUS ZAHRIYEH	1	BROUMMANA	6	OTHER	1	MAALLAQA ARADI	2	HLALIYEH	1
TALL HMAIYRA	1	TRABLOUSTABBANEH	1	JOURET EL BALLOUT	2	Baalback	27	SAYDET EN NAJAT	1	HARET SAIDA	2
SAMMAQIYEH	1	TRABLOUS JARDINS	2	MAR CHAAYA	1	BAALBEK	3	HAOUCH EL OUMARA	3	AIN EL HELOUEH	1
BEHNINE	2	MINA	8	BAABDAT	1	SAAIDEH	1	FOURZOL	2	MAJDELYOUN	3
MHAMMARA	2	QALAMOUN	7	BEIT MERI	1	RAS BAALBEK	1	HAZERTA	2	AABRA	1
AABDEH	1	OTHER	13	MONTEVERDI	2	AARSAL	1	KSARA	1	QRAIYEH	3
BERQAYEL	5	Koura	5	MROUJ	2	LABOUEH	2	OUADI EL AARAYECH	2	HABABIYEH	1
BZAL	2	BZIZA	1	KHINCHARA	1	QAA BAALBEK	1	CHTAURA	3	GHAZIYEH	5
DINBOU	1	BATROUMINE	1	CHOUER	1	YOUNINE	1	JALALA	5	MAGHDOUCHEH	1
SFINET EL QAYTEAA	1	QALHAT	2	AAYROUN	1	DEIR EL AHMAR	1	TAALABAYA	5	QENNNARIT	3
QABAAIT	7	DAHR EL AIN	1	FAOUAR	1	BESSAILET FAOUQA	1	JDITA	3	KHARAYEB	2
HABCHIT	1	Sour	46	BASKINTA	5	BEDNAYEL	2	TAANAYEL	1	ZRARIYEH	4
QARQAF	1	SOUR	10	OTHER	3	QSARNABA	1	SAADNAYEL	1	AADLOUN	1
JDAIDET EL QAYTEAA	2	JALL EL BAHR	1	Nabatieh	32	HAOUCH ER RAFQA	1	QABB ELIAS	10	BABLIVYEH	4
FNAYDEQ	3	SOUR ER RACHIDIYEH	1	NABATIYEH ET TAHTA	2	CHMISTAR	2	BOUAREJ	1	GHASSANIYEH	1
RAHBEH	1	BORJ ECH CHEMALI	6	NABATIYEH EL FAOUQA	1	TARAYA	2	BARR ELIAS	10	SARAFAND	11
BIREH	1	JOUIYA	1	MAZRAAT KFAR JAOUZ	2	NABI CHIT	1	MAJDEL AANJAR	6	BISSARIYEH	1
KHIRBET DAOUD	1	QANA	3	ZIBDINE	2	BRITAL	1	RIYAQ	1	SAKSAKIYEH	3
AAQUAINAT	1	OUARDANI	1	KFAR ROUMMANE	4	BOUDAY	1	AALI EN NAHRI	1	MEROUANIYEH	1
AIN EZ ZAYT	1	MAARAKEH	1	CHOUKINE	1	OTHER	4	DEIR EL GHAZAL	2	AADDOUSIYEH	2
MACHTA HAMMOUD	1	MAAROUB	3	KFAR TIBNIT	2	Hermel	9	KOUSSAYA	1	MAAMARIYEH	1
MACHTA HASSAN	1	SADDIQINE	1	JBAA	1	HERMEL	4	RAAIT	4	AANQOUN	5
RIHANIYEH	1	HANAOUAY	1	AARAB SALIM	2	QASR (HERMEL)	1	OTHER	6	KFAR HATTA	1
QBAYAT	1	TAYR DEBBA	6	HOUIMINE ET TAHTA	1	OTHER	4	Marjeyoun	9	OTHER	11
OUADI KHALED	9	CHEHABIYEH	1	AAZZI	1	Bint Jbeil	6	QLAIAA	1		
Other	9	TOURA	2	ZEFTA	1	Rmeich	6	TAYBEH	1		
		DEIR QANOUN NAHR	2	TOUL	1	Jezzine	1	SOUANEH	7		
		TAYR FALSAY	1	NMAIRIYEH	1	Mharbieyh	1	Hasbaya	7		
		AABBASSIYEH	2	DOUAIR ( NABATIYEH)	1	Other	69	HASBAIYA	1		
		MAJDEL ZOUN	2	JIBCHIT	2			CHEBAA	1		
		OTHER	1	INSAR	1			MARJ EZ ZOUHOUR	3		
				ZAOUTAR GHARBIYEH	1			KFAYR EZ ZAIT	2		
				QSAIBEH	1						
				KFAR SIR	1						
				Other	3						

All reports and related decisions can be found at: <http://drm.pcm.gov.lb>

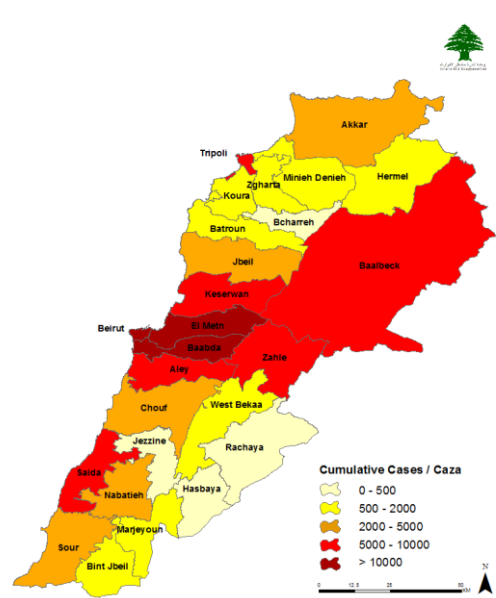
Or social media @DRM\_Lebanon

## Distribution of Active and Cumulative Cases

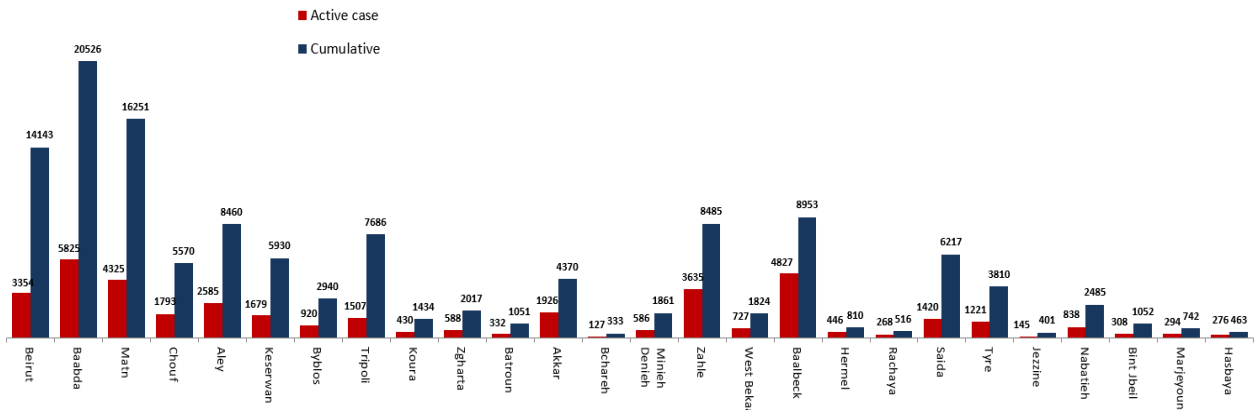
### Distribution of Active Cases



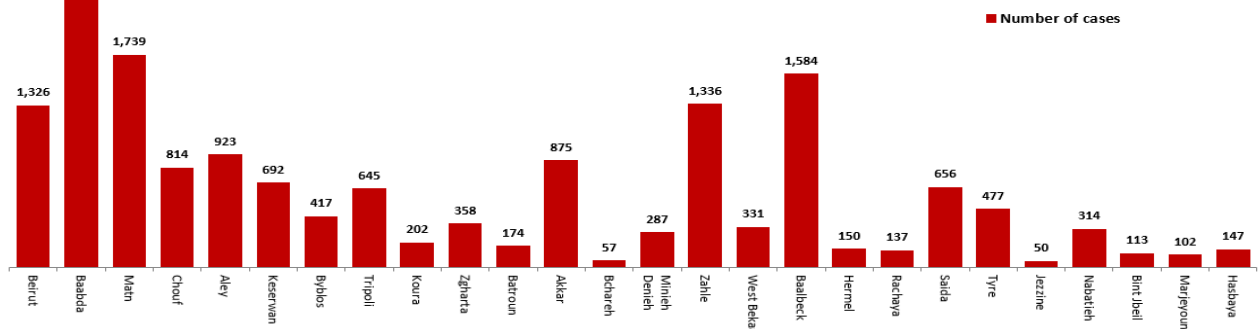
### Distribution of Cumulative Cases



### Number of Cases by Location



### Number of cumulative cases for the last 14 days



All reports and related decisions can be found at: <http://drm.pcm.gov.lb>

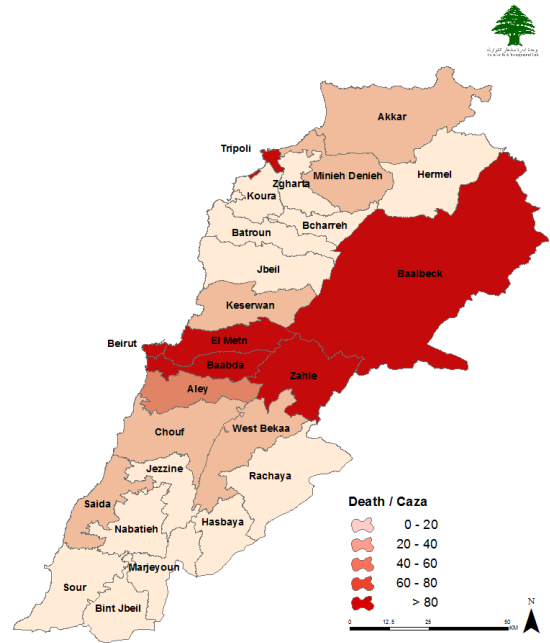
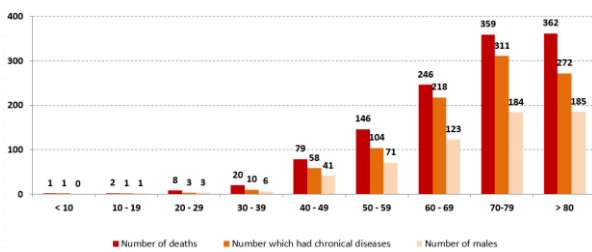
Or social media @DRM\_Lebanon

## Distribution of Death Cases

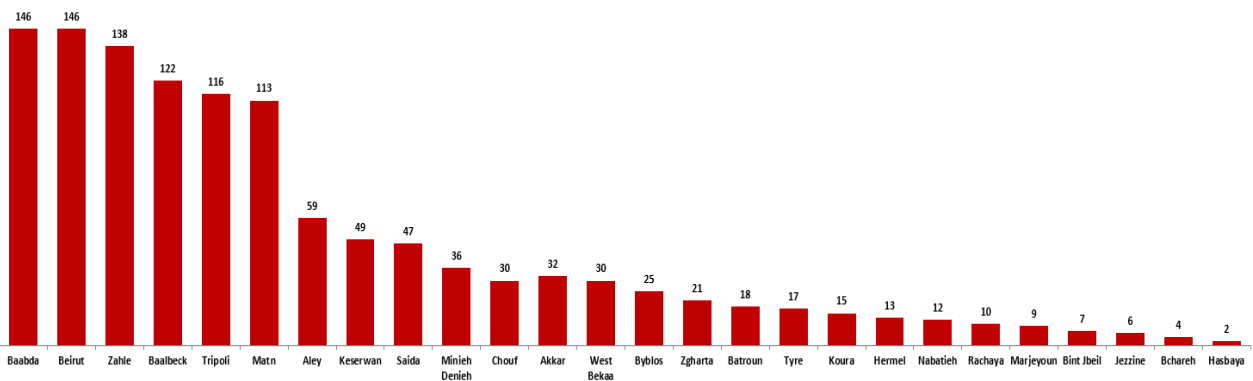
### Distribution of deaths during the past 24 hours

Hospital	Residence	Gender	Age	Chronic
El Mounla	Akkar	Male	51	Yes
El Mounla	Akkar	Male	51	Yes
Riyak	Zahle	Male	73	Yes
Jezzine	Jezzine	Male	78	No
Harire Gov.	Beirut	Male	58	Yes
Harire Gov.	Beirut	Male	56	Yes
Home	Zahle	Female	78	Yes
Farhat	West Bekaa	Male	66	No
Riyak	Baalback	Male	60	No
Dar El Amal	Akkar	Male	72	Yes
Lebanese French	Zahle	Male	69	Yes
Home	Baalback	Male	48	Yes
El Sahel	Baabda	Female	83	Yes

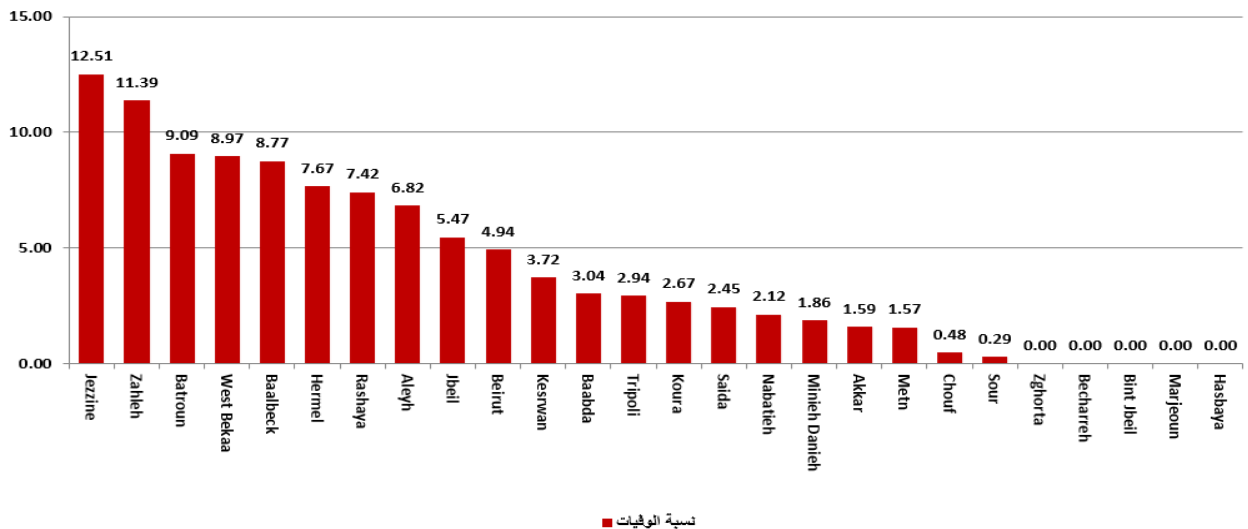
### Distribution of deaths by Age Groups



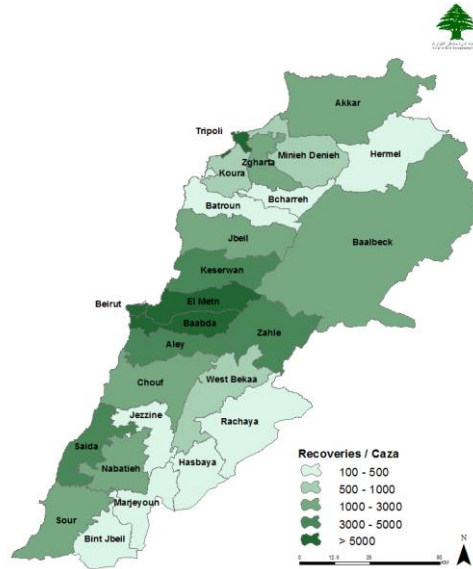
### Distribution of deaths by Governorates



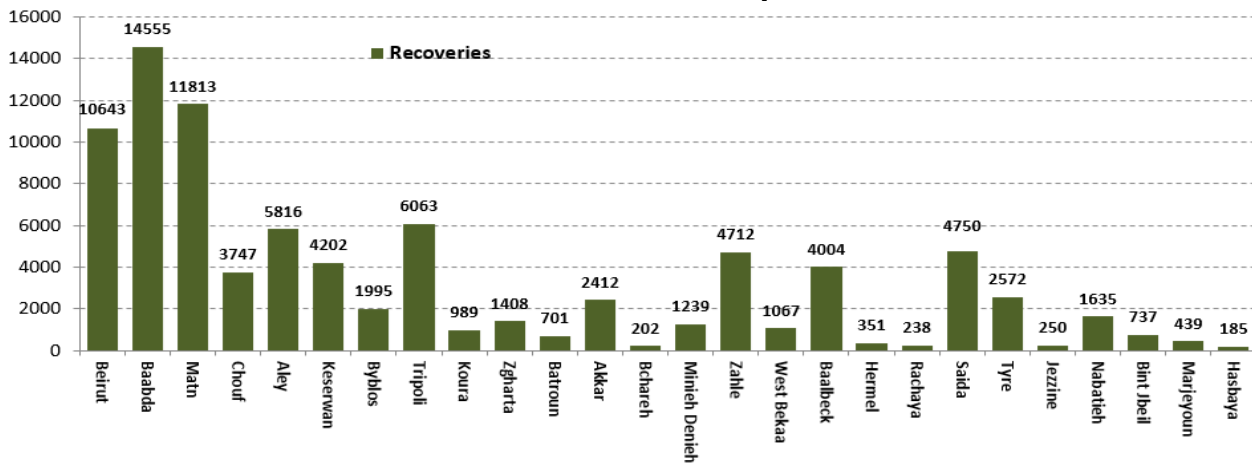
### Distribution of mortality rate for the last 14 days



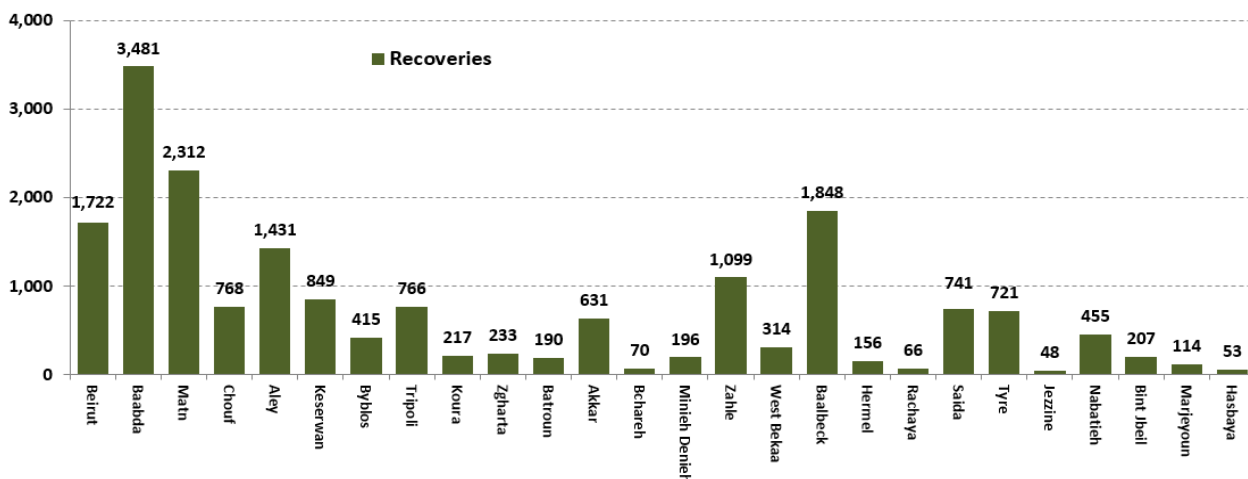
## Distribution of Recoveries



## Distribution of Recoveries per Casa



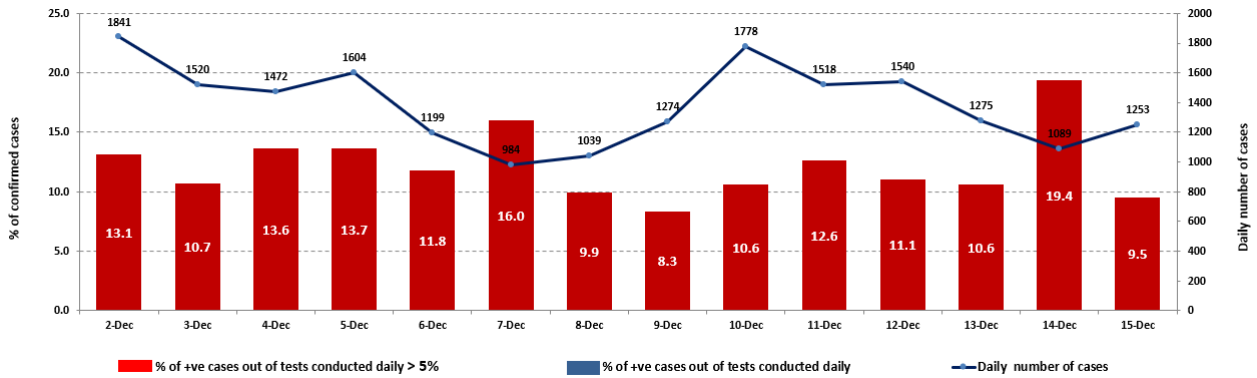
## Distribution of Recoveries per Casa in the last 14 days



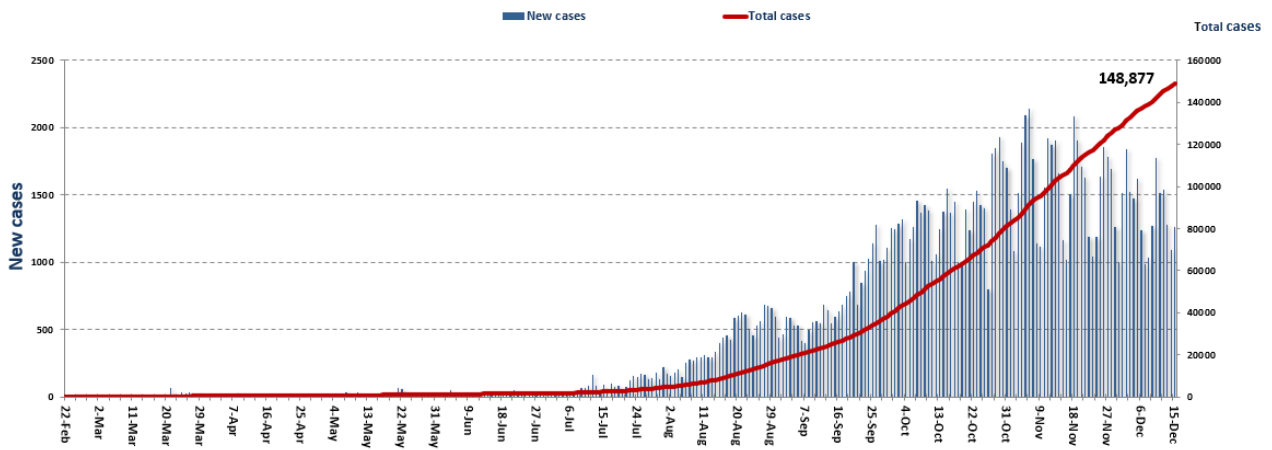
All reports and related decisions can be found at: <http://drm.pcm.gov.lb>

Or social media @DRM\_Lebanon

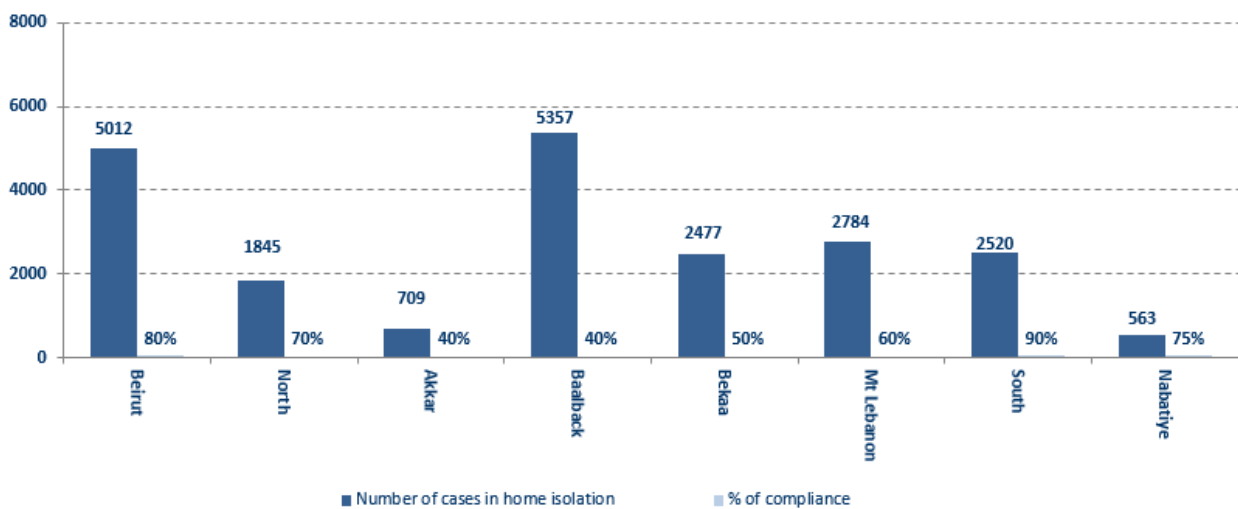
## The percentage of positive cases out of the number of daily tests (02 Dec– 15 Dec,2020)



## Cumulative cases per day



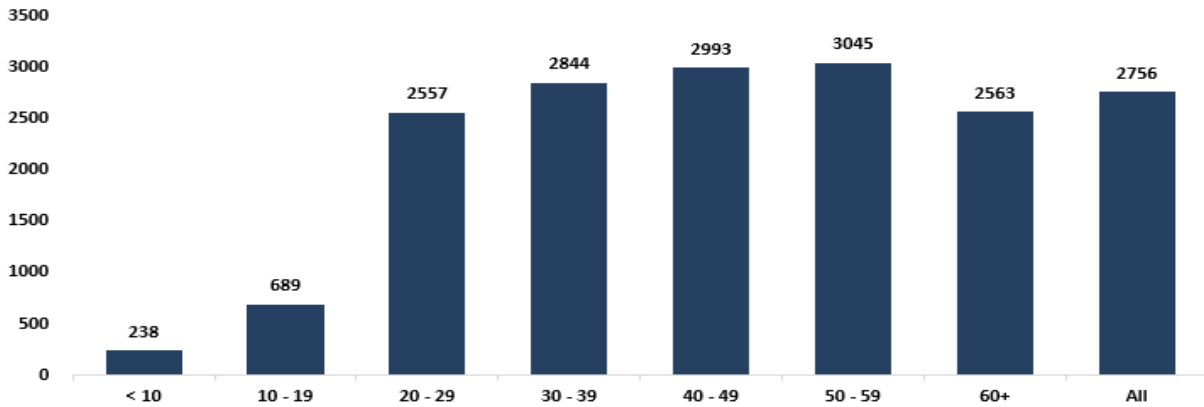
## Number of individuals in home isolation and percentage of commitment to isolation



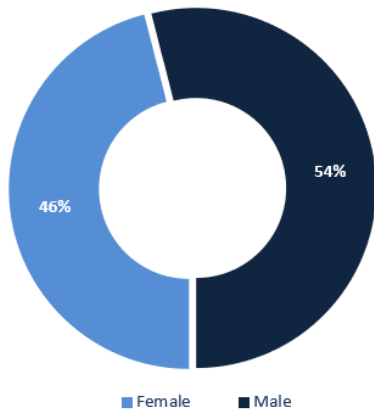
All reports and related decisions can be found at: <http://drm.pcm.gov.lb>

Or social media @DRM\_Lebanon

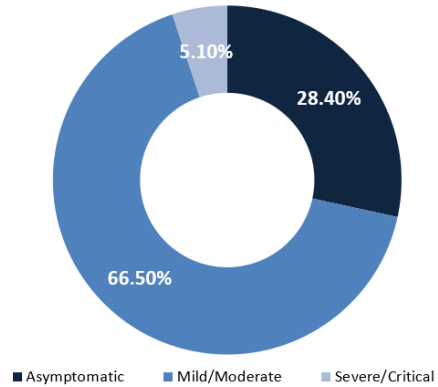
## Age-Specific Cumulative Incidence rate (/100000)



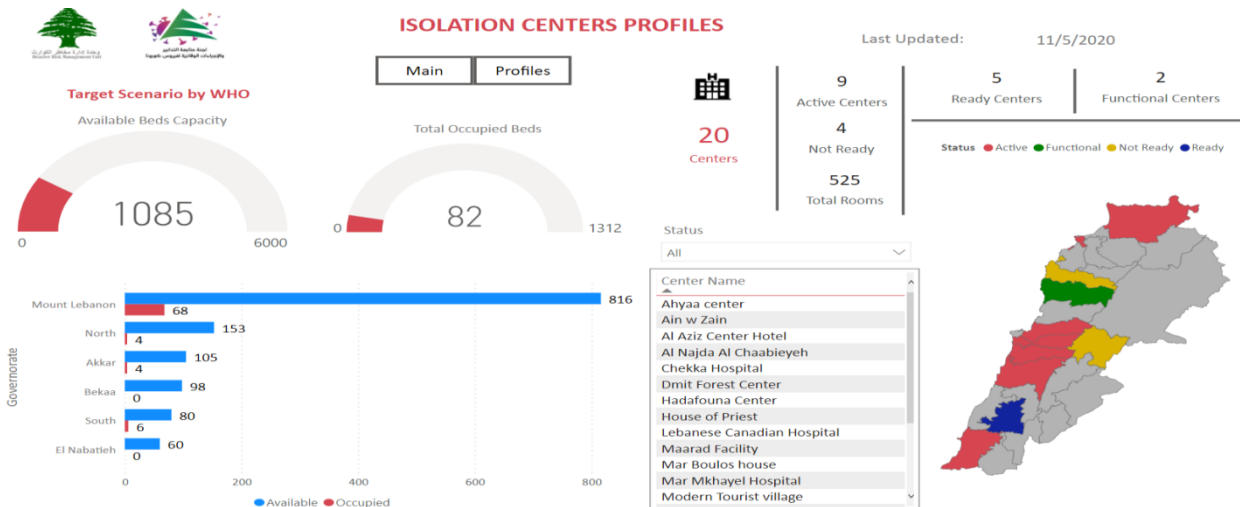
## Distribution of cases by gender



## Distribution of cases by Status



## Occupancy rate of isolation centers for cases infected with Corona virus



For more information about the isolation centers' distribution and the percentage of their occupancy, enter the following link: <http://bit.ly/DRM-IsolationCentersProfiles>

All reports and related decisions can be found at: <http://drm.pcm.gov.lb>

Or social media @DRM\_Lebanon

## Decisions and actions taken – 12/15/2020

### Ministry of Public Health

- The Embassy of the Arab Republic of Egypt stated that, "The Egyptian Ministry of Health sent a third batch of remdesivir to the Lebanon, upon its urgent request, to help combat the Corona pandemic."
- The Ministry of Public Health reported the expected dates for the arrival of Corona vaccines in some Arab countries, as this will be between the end of this December and the beginning of the spring of 2021.

-The Ministry of Public Health reported that PCR tests had been completed for flights that arrived to Beirut and were conducted at the airport on 10, 11, 12 and 13 January 2020, and the results showed the existence of fifty-two (52) positive cases distributed over the following flights:

Destination	Num of cases	Flight num	Company
			11/12/2020
Addis Ababa	1	406	Ethiopian
Cairo	1	713	Egyptian
Adana	1	6700	Pegasus
Cairo	1	711	Egyptian
Abidjan	6	572	MEA
Istanbul	5	268	MEA
Cairo	1	307	MEA
			12/12/2020
Addis Ababa	2	406	Ethiopian
Damascus	2	201	Q6
Istanbul	3	266	MEA
Soulaimaniye	2	133	Iraq
Cairo	3	711	Egyptian
Baghdad	4	301	Iraq
Erbil	3	325	MEA
Istanbul	4	268	MEA
Istanbul	2	826	Turkish
Cairo	3	307	MEA
Istanbul	1	863	Pegasus
			13/12/2020
Addis Ababa	2	406	Ethiopian
Istanbul	1	828	Turkish
Cairo	2	713	Egyptian
Aboja	2	568	MEA
<b>52</b>			



## Lebanese Red Cross

Cases transferred to the hospital	10,206 (67 New)	Ambulance centers	48	Number of additional ambulance centers ready to respond	59,943	Number of PCR tests transferred to laboratories	240,171
Number of being benefitting from awareness sessions	116,576 (401 New)	total number of respondents	8,889	Number of trained paramedics	1,498	Number of volunteers trained to transfer PCR tests	166
Number of trained managers for isolation centers	8,847	total LRC volunteers for covid 19	550	Number of university volunteers trained to conduct awareness sessions	310	The number of university volunteers trained to follow up on prevention measures in companies and institutions	967
Number of prisons that has been disinfected	1,012	Total distributed posters, brochures, and flyers on covid19 prevention	1,261,982	Number of distributed equipment	263,876	Number of beneficiaries from educational electronic platforms COVID-19	4,789 (3 New)

## Lebanese Army Forces

- The army units continue to distribute social aid (400,000 Lebanese pounds) to families with limited income in all Lebanese territories.
- Distributing food aid in various Lebanese regions through the CIMIC Office.
- Establishing circumstantial barriers in various regions and supporting the Internal Security Forces in implementing the general closure decision in the country

## General Directorate of Internal Security Forces

- The Internal Security Forces in all governorates and regional directorates organized patrols and circumstantial checkpoints
- The minutes that were written against the violators of the decisions of the general mobilization during the past 24 hours were distributed as follows:

The number of seizure records during the past 24 hours					The total number of records since 03/08/2020		
Written records of cars that violate curfew decision					0	Beirut	37,699
Written records of violating institutions					20	Mount Leb	41,311
Written records of persons violating the decision to wear a mask					137	Beqaa	16,261
<b>Total</b>					<b>157</b>	North	13,456
Beirut	Mount Leb	Beqaa	North	South	South	Total	13,180
77	66	0	0	14		<b>Total</b>	<b>121,907</b>

## General Directorate of State Security

- Reporting the number of new positive cases in the various governorates and districts, and the cases in home quarantine.
- Follow up the procedures performed by medical teams at the arrival's examination centers at the airport and at border crossings.
- The report of a death in a woman in the Batroun district due to the Corona virus.
- Reporting on the decision of the North Lebanon Governor to isolate the town of Kfardelkous for a period of one week, starting December 10, 2020

## General Directorate of General Security

All reports and related decisions can be found at: <http://drm.pcm.gov.lb>

Or social media @DRM\_Lebanon

- Carrying out patrols in the various governorates to follow up on the implementation of the general mobilization decision and alerting citizens to abide by preventive measures.
- Reporting that a large number of commercial establishments did not adhere to the preventive measures.
- Reporting the cumulative number of positive cases in the districts.
- Notification of the percentage of compliance with the general mobilization decision in the governorates, which came as follows within the past 24 hours:

Beirut	South	North	Akkar	Beqaa	Nabatiyeh	Baalbek Hermel	Mount Leb
75%	55%	40%	60%	55%	55%	50%	55%

#### Ministry of Public Works and Transportation

##### Beirut RaficHarriri International Airport:

Departing Flights		Arriving Flights	
Number of Flights	38	Number of Flights	38
Number of Departing Individuals	3,412	Number of Arrivals	4,682

##### Ports:

Port	Left			Entered		
	Export	Direction	#	Import	Direction	#
Beirut	Containers	Agio Theodori	1			
<b>Total</b>			<b>1</b>			

#### General Decisions / Announcements

On 12/13/2020, the Ministry of Interior and Municipalities issued Resolution No. 1556 regarding the amendment of preventive measures and measures to confront the Corona epidemic, as it begins to be applied from the morning of 12/14/2020 until the morning of 12/21/2020, and the most prominent of what was mentioned in it:

- Determine the times of entry and entry into the streets between 23:30 until 5:00 in the next morning.
  - Transport instructions for private and public vehicles and trucks.
  - Opening times for the public sector and the economic and commercial sectors in all Lebanese regions.
  - Allowing the holding of various social events under specific conditions, in addition to coordinating with the religious authorities in terms of organizing and determining the number of worshipers in places of worship.
  - Setting specific conditions that allow restaurants, cabarets and bars to operate.
  - Limiting the decision to open or close educational institutions and administrative units in all towns and villages to the Minister of Education and Higher Education.
  - General provisions related to the numbers of people traveling by specific public and private means of transport, public prevention and safety measures, mandatory wearing of a mask, personal hygiene and especially hand washing, permanent sterilization and not overcrowding while maintaining distances between people and organizing roles on payment boxes.
  - Exclusions related to movement and curfews (military personnel, health sector employees, workers in the diplomatic corps, media professionals, port employees, maritime agencies and the airport, in addition to the Electricity of Lebanon and Kadisha, water establishments and their service providers, mill workers, sweeping companies, waste collection and transportation, military vehicles, civil defense mechanisms, firefighting, municipal police and the cross) The Lebanese Red Army, ambulances and medical apparatus, the diplomatic corps, the United Nations, the media and the media, the lifts and the vehicles designated for transporting and towing cars, the vehicles designated for people with special needs and those with a card from the Ministry of Social Affairs, arrivals and departures, and those who take them to and from the airport, provided they have a copy of the travel ticket.
  - The mandates of governors, mayors and district officials in implementing the decision.
  - The units of the General Directorate of Internal Security are strict in implementing this decision.
- Note: The full decision can be found at: <http://drm.pcm.gov.lb>

#### Examples of lack of adherence to safety measures

- Violations of the Ministry of Interior Decision No. 1432: promenade on the sea corniche, violations of authorized and single motor vehicle traffic, and violations of commercial establishments and stores that did not adhere to the decision.
- Failure to comply with the preventive measures and procedures required in a number of stores and markets (putting on a mask or face mask, sterilizing hands, maintaining a safe distance).
- Failure of those in contact with confirmed cases to adhere to home isolation procedures until the results of the laboratory tests are issued.

**If you feel any symptoms, directly call the hotline of the Ministry of Public Health: 1214 or 01/59445**

All reports and related decisions can be found at: <http://drm.pcm.gov.lb>

Or social media @DRM\_Lebanon

**Laboratories that did not comply with the procedures approved by the MoPH About the information required to be recorded for infected cases within the past 24 hours**

<b>Laboratories that did not specify the Governorate</b>	
<b>Laboratory/Hospitals</b>	<b>Cases</b>
BDL003-Laboratoire Inovie / Fayyadieh	45
BDL006 - Beirut International Airport	5
MTH548-Hospital Serhal / Rabieh	5
ZHH225-Hospital Mayas / Zahleh	5
BRL009 - Fontana Laboratories	4
BDL002-Hadi Laboratory/ Haret Hreik	2
BRD003-Saint Joseph, Achrafieh	1
BRH602-Military Hospital / Adlieh	1
SRL001 - Mashrek Medical Diagnostic Center	1

<b>Number of positive cases without specifying the place of residence</b>	
<b>Laboratory/Hospitals</b>	<b>Cases</b>
BDL003-Laboratoire Inovie / Fayyadieh	45
BDL006 - Beirut International Airport	5
MTH548-Hospital Serhal / Rabieh	5
ZHH225-Hospital Mayas / Zahleh	5
BRL009 - Fontana Laboratories	4
BDL002-Hadi Laboratory/ Haret Hreik	2
BRD003-Saint Joseph, Achrafieh	1
BRH602-Military Hospital / Adlieh	1
SRL001 - Mashrek Medical Diagnostic Center	1

<b>Number of positive cases without a phone number</b>	
<b>Laboratory/Hospitals</b>	<b>Cases</b>
BDH558-Hospital Saint Georges Hadath	1
BDL002-Hadi Laboratory/ Haret Hreik	1

## A list of the laboratories accredited by the MoPH to conduct PCR tests

### Governmental Labs

المختبر	الموقع
RHUH	بيروت مستشفى رفيق الحريري الجامعي
Halba Governmental	حلبا مستشفى حلبا الحكومي
Tripoli Governmental	طرابلس مستشفى طرابلس الحكومي
Batroun Governmental	البترون مستشفى البترون الحكومي
Fetouh Keserwan	كسروان مستشفى فتوح كسروان الحكومي (البوار)
Nabih Berri Hosp	النبطية مستشفى نبيه برّي الحكومي الجامعي
Tebnine Governmental	تبنين مستشفى تبنين الحكومي
BintJbeil Governmental	بنت جبيل مستشفى بنت جبيل الحكومي
Baalback Governmental	بعلبك مستشفى بعلبك الحكومي
Elias Herrawi Governmental	زحلة مستشفى الرئيس الياس الهراوي الحكومي

### Private Labs

المختبر	الموقع
AUBMC	بيروت مستشفى الجامعة الأميركية
Hôtel Dieu de France	بيروت مستشفى أو تيل ديو الجامعي
Laboratoires Rodolphe Mérieux (Université Saint-Joseph)	بيروت مختبرات رودولف ميريوي (الجامعة اليسوعية – المتحف)
George-Saint UMC Hospital	بيروت مستشفى القديس جاورجيوس الجامعي
General Makassed Hospital	بيروت مستشفى المقاصد
LAU Medical Center - Rizk Hospital	بيروت مستشفى رزق الجامعي
CHU - Geitawi Libanais Hospital	بيروت مستشفى الليتاني الجعيتاوي الجامعي
Hôpital Notre-Dame du Rosaire	بيروت مستشفى الوردية
Doctors' Center	بيروت مختبر مركز الأطباء
Fontana Laboratories	بيروت مختبر فونتانا (الحمرا)
General Security Laboratories	بيروت مختبر الأمن العام (العدلية)
Ghorra-Jabre Laboratories	الأشرفية مختبرات جبر و غرة
Saint Marc Medical & Diagnostic Center	الأشرفية مختبر السانمارك
Laboratories HML	فرن الشباك مختبرات حداد
Laboratoire Moderne (Modern Lab.- Berjaoui)	الغبيري المختبرات الحديثة
Sahel General Hospital (SGH)	الغبيري مستشفى الساحل
Al Zahraa Hospital	الغبيري مستشفى الزهراء الجامعي
	بئر حسن مركز النقاء الطبي
Al Rassoul Al Aazam Hospital	برج البراجنة مستشفى الرسول الأعظم
Bahman Hospital	حارة حريك مستشفى بهمن
National Diagnostic Services Company (NDSC)	حارة حريك مختبر ناشيونال دياغنوستك سيرفس كومباني
Center Diagnostic Medical	المريجة مختبر الدكتور محمود عثمان - مركز التحاليل الطبية
ADC (Center Diagnostic American)	الجناح مختبر أميريكين دياغنوستك سنتر
Mount Lebanon Hospital	بعيدا مستشفى جبل لبنان
Hadath – George-Saint Hôpital	بعيدا مستشفى السان جورج الحدت
Laboratory Al Hadi	بعيدا مختبر الهادي
INOVIE	بعيدا مختبر Liban-
Sacré - Coeur Hôpital	الحازمية مستشفى قلب يسوع
Clinigene	الحازمية مختبر كلينيغان
Dr. Samir Serhal Hospital	المتن مستشفى سرحال
Life for Trans medical	المتن مختبر ترانس ميديكال فور ليف
	المتن مختبرات سان ميشال للتحاليل الطبية
	المتن مختبر مركز الشرق الأوسط الصحي ش.م.ل
Haroun Hospital	الزلقا مستشفى هارون
Bellevue Medical Center (BMC)	المنصورية مستشفى بلفو
Haykal Albert Hôpital	الكورة مستشفى هيكل

All reports and related decisions can be found at: <http://drm.pcm.gov.lb>

Or social media @DRM\_Lebanon

Centre Hospitalier du Nord (CHN)	مركز الشمال الاستشفائي	زغرتا
Mazloun Hospital	مستشفى المظلوم	طرابلس
Al Mounla Hospital	مستشفى المنلا	طرابلس
Nini Hospital	مستشفى النيني	طرابلس
LMSE	مختبر ميكروبيولوجيا الصحة والبيئة، المعهد العالي للدكتوراه، الجامعة اللبنانية	طرابلس
Secours des Dame-Notre – CHU	مستشفى سيدة المعونات الجامعي	جبيل
Boulos & Akiki Lab	مختبر عقيلي وبولس	جبيل
Wakim Centre Médical	مختبر واكيم	جونية
Hospital Wzein Ain	مستشفى عين وزين	الشوف
UMC Hospital Hammoud	مستشفى حمود الجامعي	صيدا
Al Karim Medical Laboratory (KML)	مختبر الكريم	صيدا
Hospital HarbRagheb Sheikh	مستشفى الشيخ راغب حرب	النبطية
SDC (Center Diagnostic Sabbah)	مختبر الصباح	النبطية
Jabal Amel Hospital	مستشفى جبل عامل	صور
Mashrek Diagnostic Center (MDC)	مختبر المشرق	صور
Hospital University Dar Al Amal	مستشفى دار الأمل الجامعي	بعلبك
	مختبرات العناية الطبية	بعلبك
	مختبرات العناية الطبية	اللبوة
Hospital General Khoury	مستشفى خوري	زحلة
MCC (Center Care Medical)	مختبر ميديكال كير سنتر	زحلة

### مختبرات المستشفيات العسكرية

Hôpital Central Militaire	المستشفى العسكري المركزي في بيروت	بيروت
---------------------------	-----------------------------------	-------

### المختبرات المؤهلة لأخذ عينات "المسحات الأنفية" بطريقة "Drive-Thru"

Medical Diagnostic Treatment Center (MDTC)	مختبر ميديكال دياغنوسيك تريمانت سنتر (الحمراء)	بيروت
ALS CIC SAL Med-Lab	مختبر ميد لاب الحمراء – الجفینور	بيروت
Itani Medical Laboratories	مختبرات عيتاني	بيروت
ABC Laboratories	مختبر أ ب سي	الأشرفية
Mouawad Medical Laboratory	مختبرات معوض الطبية	الشياح
Rihan Medical Center	مختبرات الشياح (د. فواد ریحان)	الشياح
Lab Expert	مختبر إكسبرت لاب	المنصورية
LAB Life	مختبر لايف لاب	بعلبك
Rayyak Hospital	مستشفى ریاق	ریاق