



Lebanon National Operations Room Daily Report on COVID-19

New in the Report:

- Dashboard link to follow up on the Hospitals Beds status of occupancy and availability in the past 24 hours
- Online link to monitor the commitment of different sectors to the general mobilization procedures.
- A circular on amending procedures related to arrivals to Lebanon, and a memorandum on the adoption of the Covid-19 disease management protocol.

Monday, September 14, 2020

Report #180

Time Published: 8:30 PM

24,857
Total registered cases
since Feb.21

1,478 **23,379**
Leb Expats Locals

547
New Cases

3 **544**
Leb Expats Locals

626,893
Conducted PCR tests in
labs since Feb.21

4,230
PCR tests conducted
tests for locals in the last
24 hrs (in labs)

2,000
PCR tests conducted
tests in airport in the
past 24 hrs

246
Deaths

5
New Deaths

8,765
Recoveries

778
Cases registered among
medical staff

7
Cases registered among
medical staff in the past
24 hrs

15,846
(Active Cases)

15,420
In home Isolation

1
Mild Cases in the
Past 24 hrs

0
In ICU in the past 24
hrs

426
Currently hospitalized

317
Cumulative Mild Cases

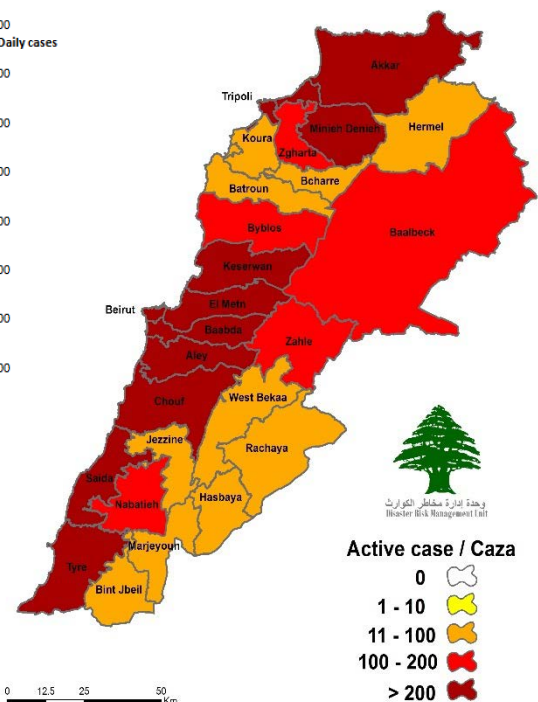
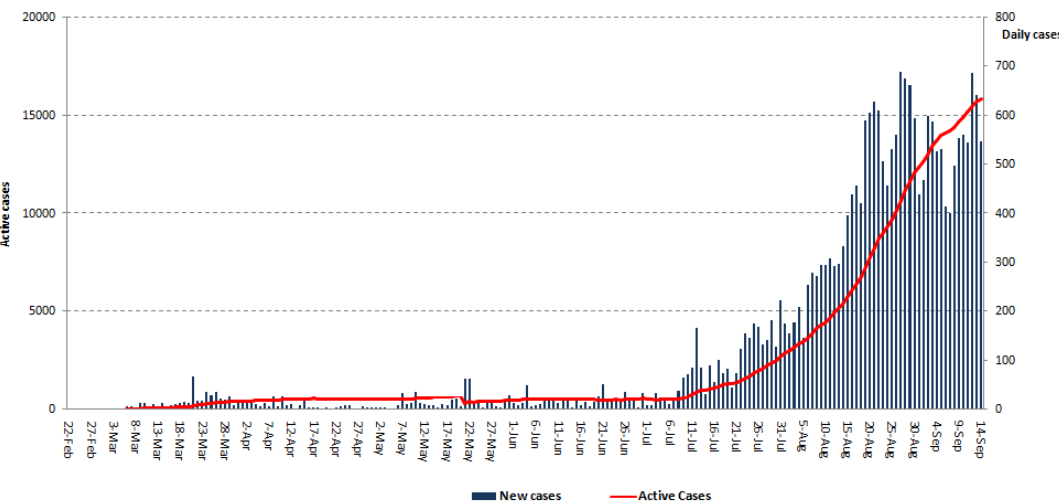
109
Cumulative In ICU

	Lebanon	Internationally
Total registered cases	24,857	29,259,797
Total deaths	246	929,631
Percentage of deaths	0.98%	3.17%
Number of recoveries	8,765	21,096,631

*The Above data was last updated at 10:00 PM

Number of Cases by Location

- 5638 case is Under investigation



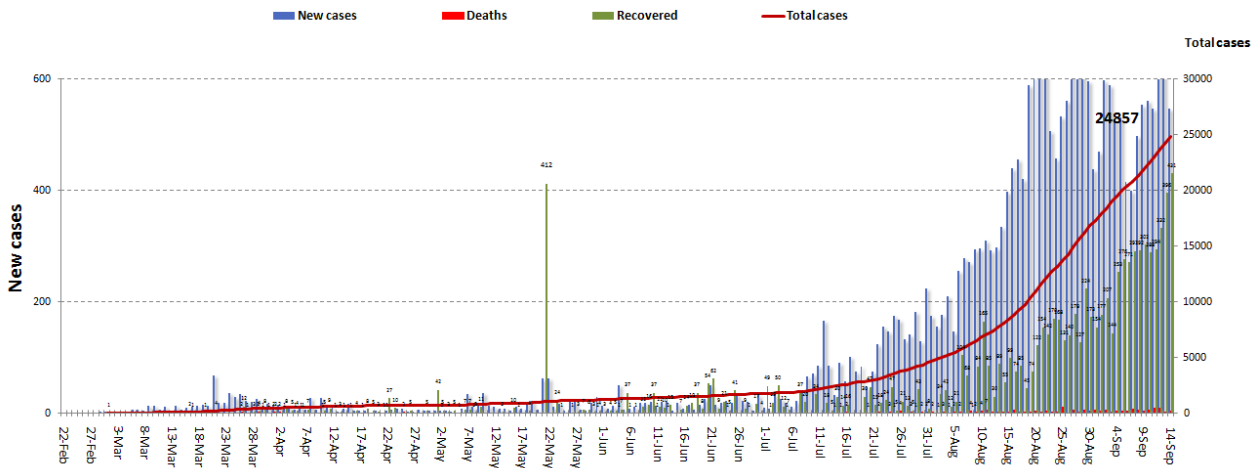
Beirut	Cases
Manara	2
Rouche	2
Hamra	4
Mseitbeh	5
Mar Elias	1
Unesco	1
Dar El Fatwa	2
Tallet El Drouz	1
Mar Michael	1
Zarif	3
Mazraa	3
Tariq Jdeede	7
Borj Abi Haydar	3
Basta El Fawka	3
Ras El Nabeh	7
Basta El Tahta	2
Achrafieh	8
Others	7
Baabda	Cases
Chiah	2
Bir Hassan	1
Fayadieh	1
Yarze	1
boutchay	3
Ghobeiry	1
Ein El Rimmaneh	2
Furn El Chibbak	2
Haret Hreik	20
Laylaki	3
Borj El barajneh	21
Mrejeh	5
Kfarshima	1
Baabda	4
Hazmieh	3
Hadat	4
Tarsheesh	1
Others	4
Tripoli	Cases
Qebbeh	3
Zehrieh	3
Mina	9
Beddawi	2
Others	16
Zghorta	Cases
Zghorta	1
Eaal	3
Ehden	1
Others	1

Matn	Cases
Borj Hammoud	4
Nabaa	1
Sin El Fil	7
Doura	1
Bouchrieh	2
Jisr WI Basha	1
Sad El Bouchrieh	1
Sabtieh	1
Dekwene	6
Jal El Deeb	1
Antelias	1
Naqqash	1
Zalka	1
Dbayeh	1
Mansouriyeh	2
Dayshouniyeh	1
Fanar	5
Roumieh	17
Bsalim	1
Mtayleb	1
Rabieh	1
Qornet Shehwan	2
Mazraaet Yashouh	1
Rabwe	2
Ein Alak	1
Dahr El Souwan	1
Monteverde	1
Dhour Shweir	1
Kfar Akab	1
Others	1
Akkar	Cases
Fnaydek	1
Sednaya	1
Aydamoun	1
Others	5
Jbeil	Cases
Amshit	1
Jbeil	1
Mshan	1
Halat	1
Nahr Ibrahim	1
Others	2
Zahle	Cases
Ksara	1
Qab Elias	1
Majdel Aanjar	1
Riyak	3
Kfarzabad	1
Others	5

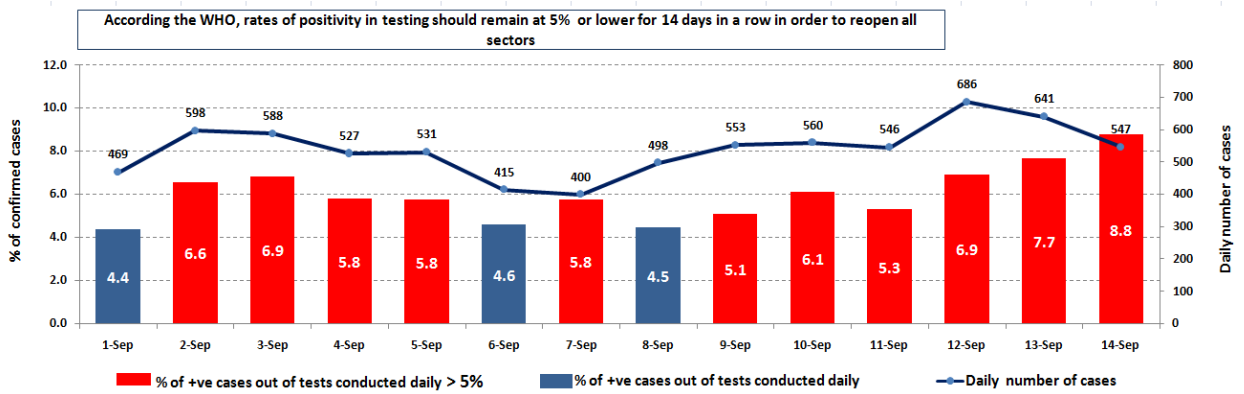
Aleyh	Cases
EL Amrousiyyeh	4
El Oumara	9
Bsous	1
Khaldeh	2
Bleibel	1
Aramoun	10
Bchamoun	1
Bsous	1
Gabon	1
Bhamdoun I Dayaa	1
Keserwan	Cases
Sarba	1
Ballouneh	1
Zok Michael	5
Zok Mosbeh	3
Jounieh - Ghadir	1
Tabarja	1
Faytroun	1
Ghazir	1
Others	1
Batroun	Cases
Shekka	1
Menyeh Duniyyeh	Cases
Minyeh	8
Hermel	Cases
Others	1
Nabatieh	Cases
Serail	2
Nabatieh El Fawqa	2
Zibdine	2
Kfar Rimman	1
Shoukeen	1
Jarjouh	1
Deir El Zahrani	3
Harouf	2
Zawtar El Sharkieh	2
Bint Jbeil	Cases
Rmeish	1
Baraachit	1
Marjouyon	2
Kfarkila	4
Mays El Jabal	2
Hasbaya	Cases
Hasbaya	1
Jezzine	Cases
Jezzine	1

Baalbeck	Cases
Ras Baalbak	1
Tarayya	1
Baalbak	1
Ras El Ein	1
Younin	1
Deir El Ahmar	3
Beqaa ElGharby	Cases
Mashghara	2
Sultan Yaacoub	1
Others	2
Saida	Cases
Haret Saida	3
Ein El Hilwe	4
Abra	1
Hlaliyyeh	1
Bablieh	1
bisarieh	1
Sarafand	1
Marwanieh	3
Angoun	1
Kfar Melki	1
Others	12
Sour	Cases
Borj El Chemali	2
Siddiqueen	1
Ter Zibna	1
Sreefa	1
Others	2
Chouf	Cases
Naameh	5
Haret Naameh	1
Barja	4
Chehim	2
Mazboud	1
Bourjen	1
Dibbieh	1
Deir El Qamar	1
Deir Dourit	1
Ein W Zein	1

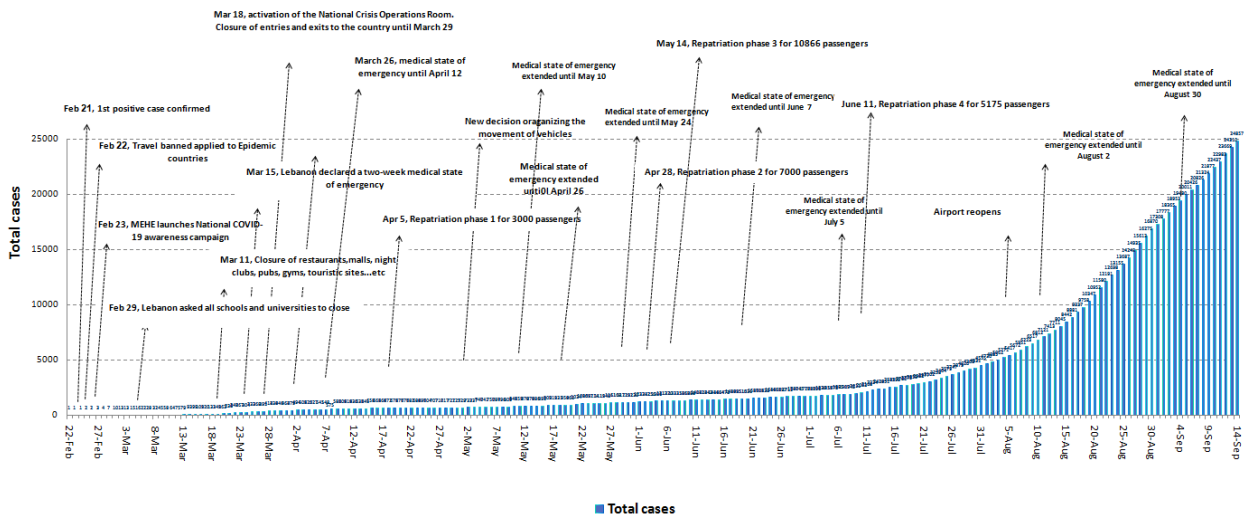
Cases per day



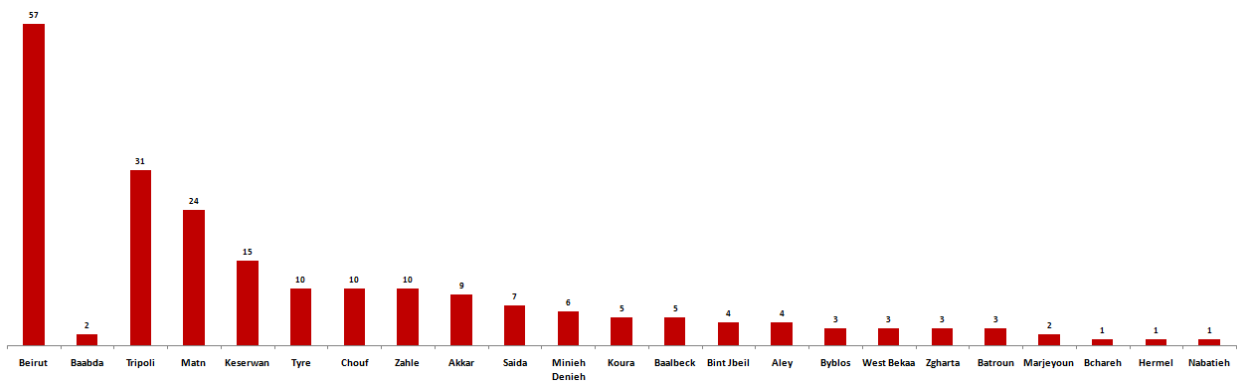
The percentage of positive cases out of the number of daily checks (1 September to 14 September 2020)



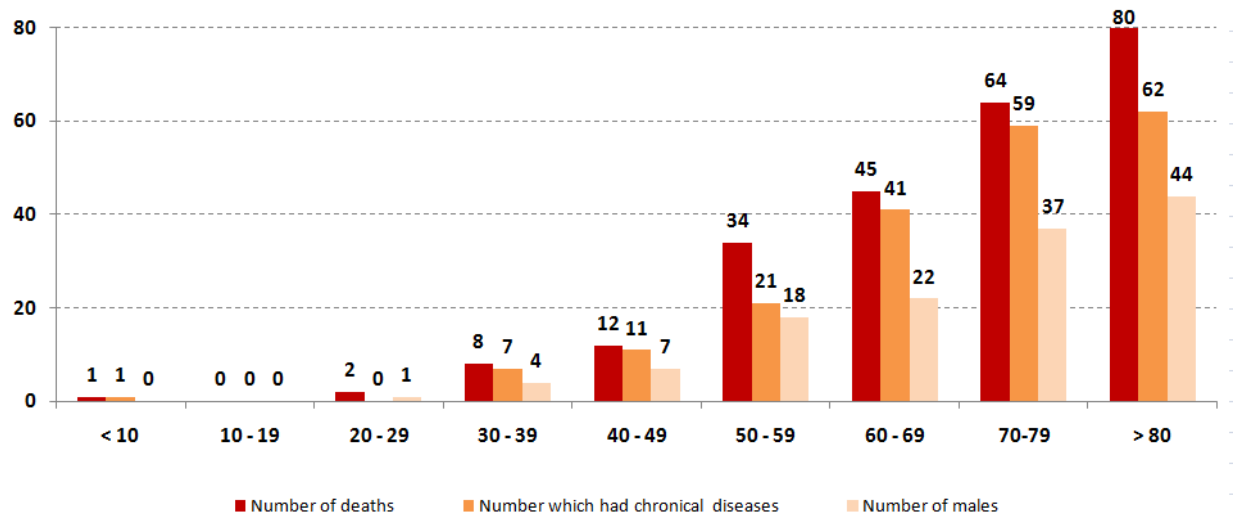
Chronology of decisions according to number of cases



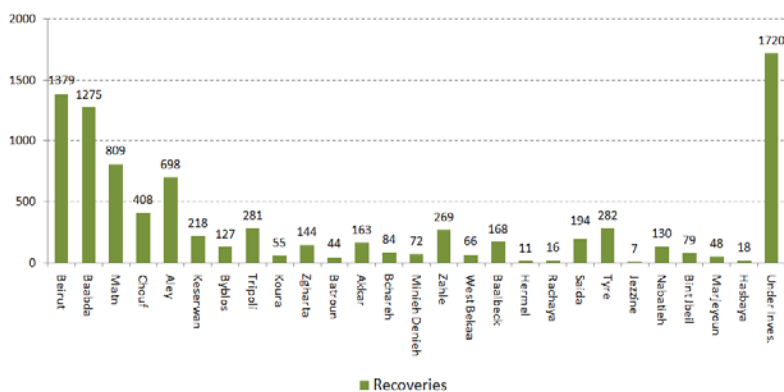
Distribution of deaths by Governorates



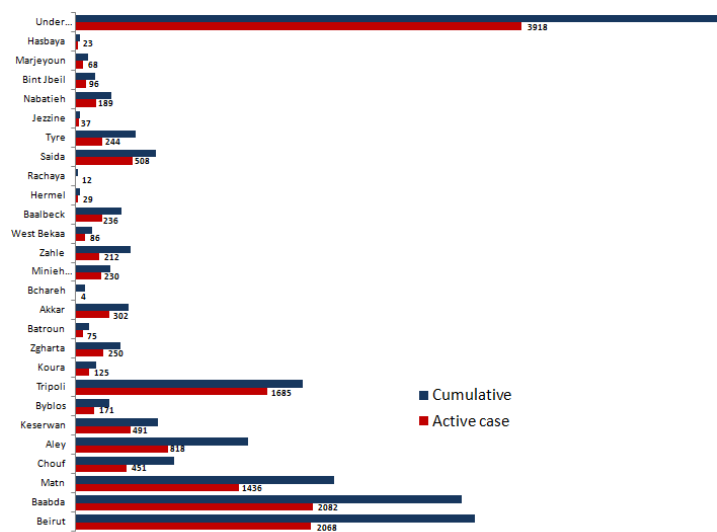
Distribution of deaths by Age



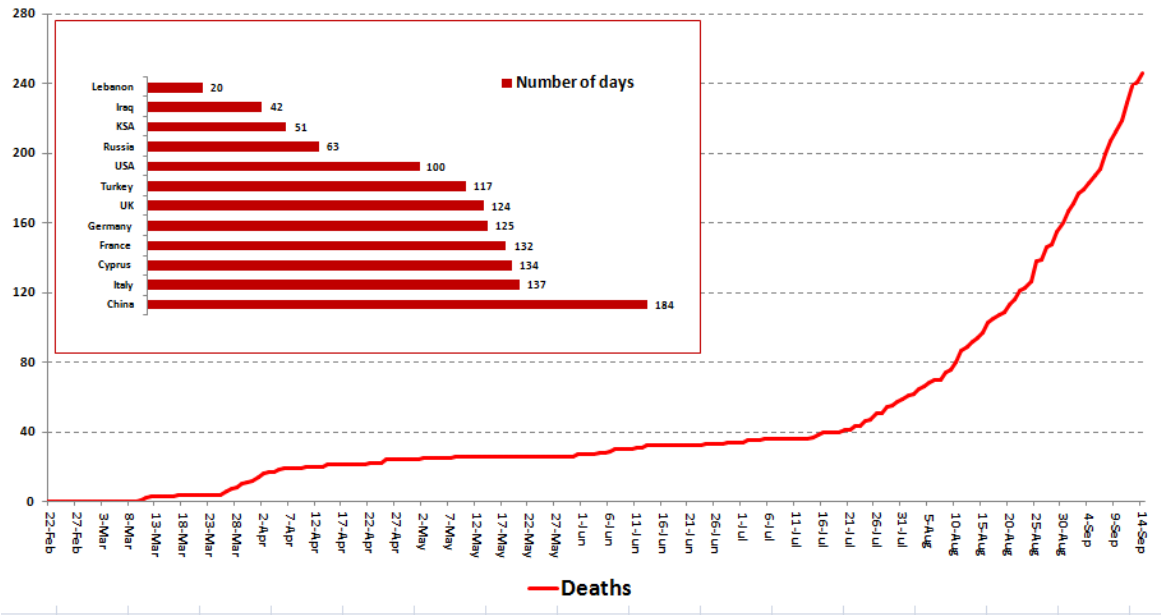
Distribution of Recoveries by Districts



Distribution of Active Cases by Districts



Comparison of the rate of doubling of the number of deaths in Lebanon with other countries (death doubling rate)

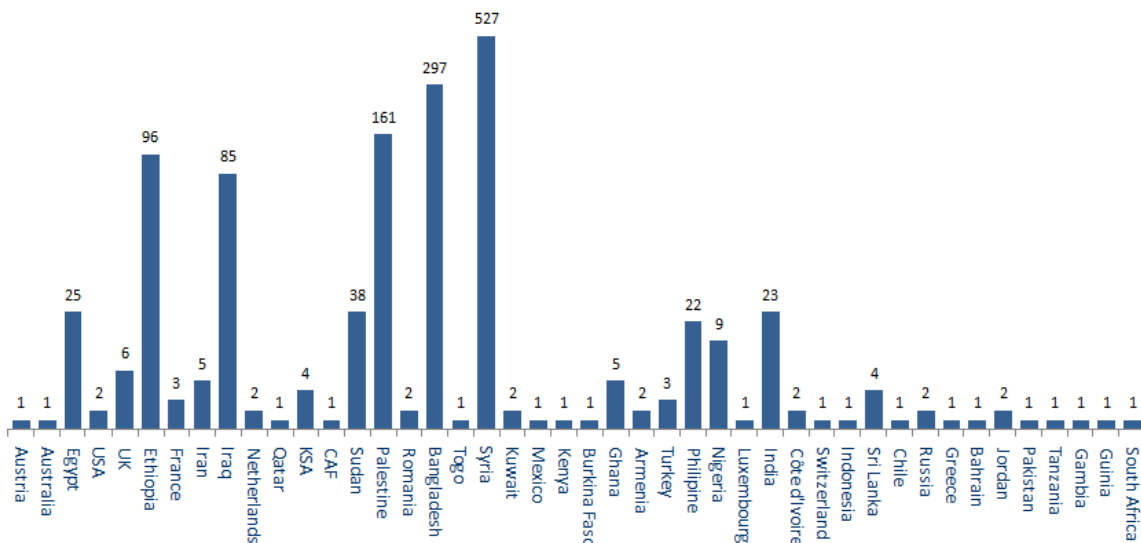


The distribution of the recorded deaths during the past 24 hours

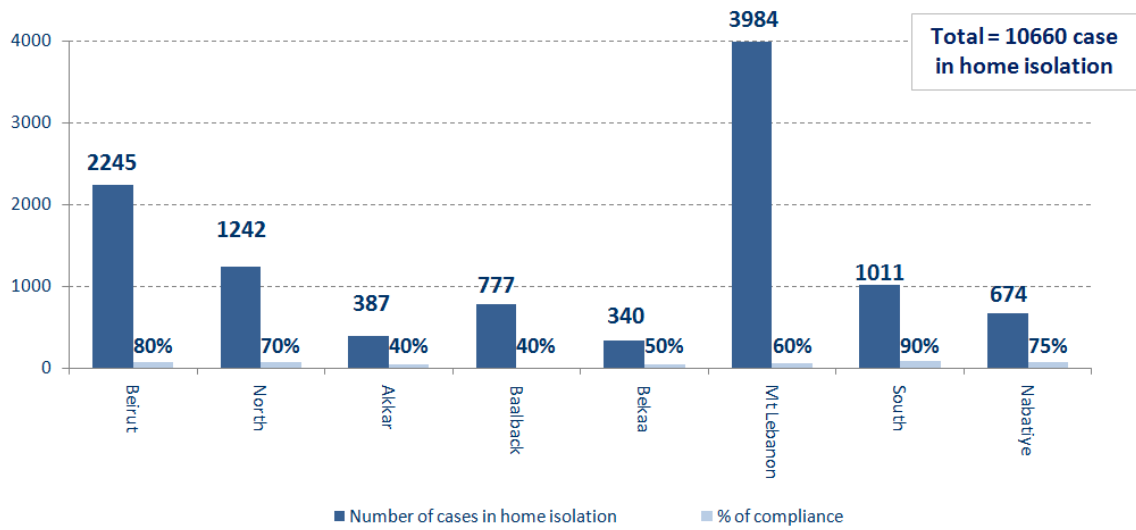
Hospital	Residence	Gender	Age	Chronic Disease
Saint George	Baabda	Male	77	Yes
Ftough Keserwan	Batroun	Female	81	Yes
Haykal	Tripoli	Male	76	Yes
Baalback Gov.	Zahle	Male	56	Yes
Tripoli Gov.	Tripoli	Male	46	Yes

Distribution of cases by nationality

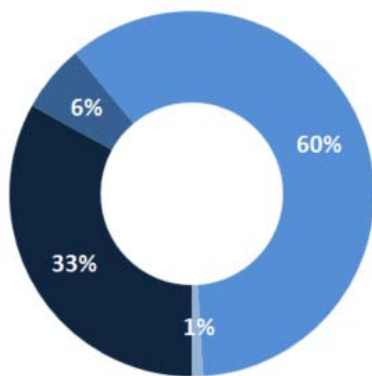
Lebanese : 23219 cases out of 24857(88%)



Number of individuals in home isolation and percentage of commitment to isolation

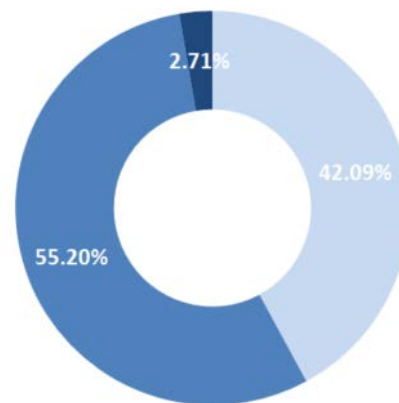


Exposure



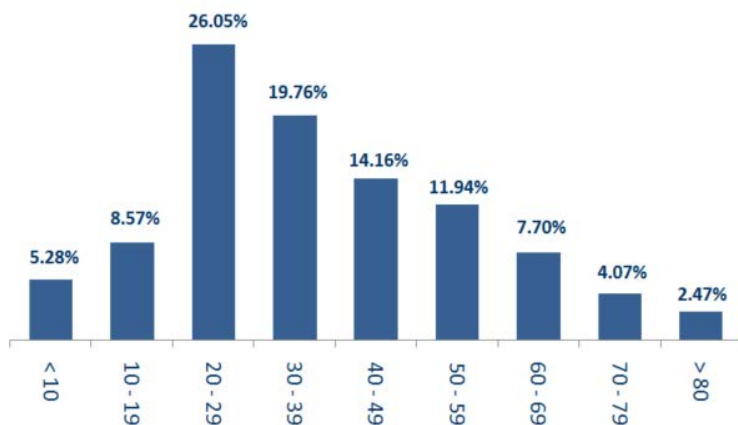
■ Contact with confirmed case ■ Travel related ■ Under investigation ■ Unidentified source

Status of Cases

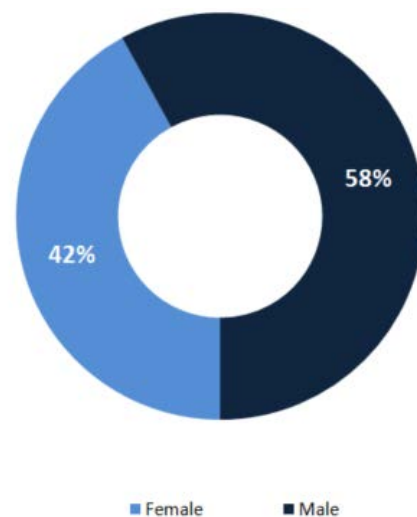


■ Asymptomatic ■ Mild/Moderate ■ Severe/Critical

Distribution by age

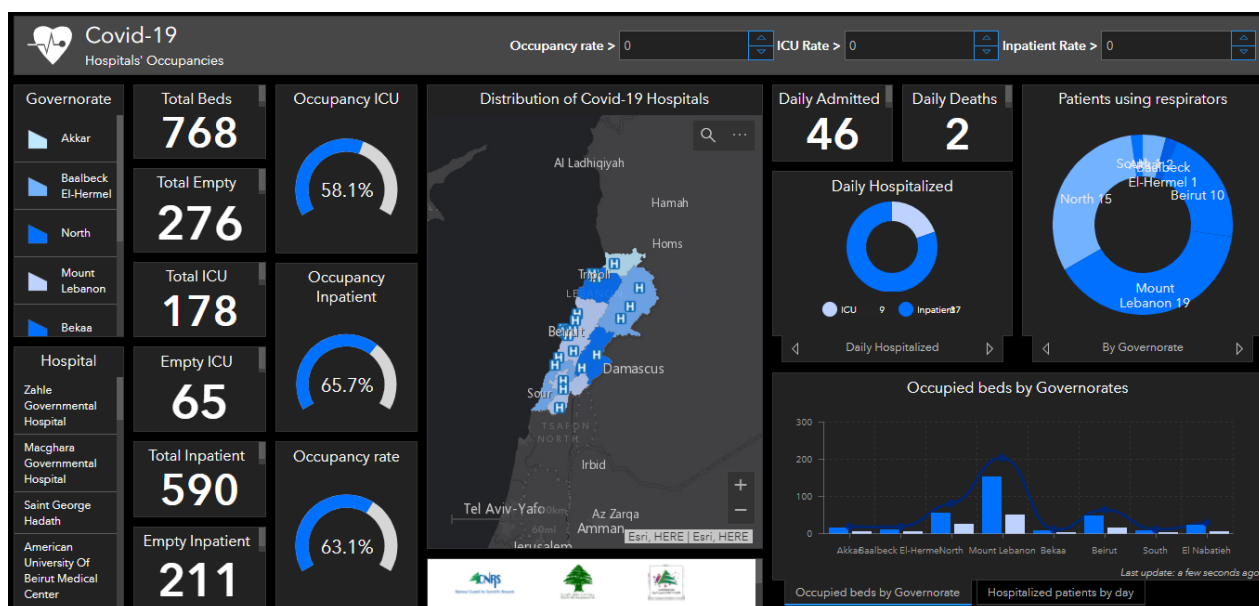


Distribution according to gender



■ Female ■ Male

The number of beds available for those infected with Coronavirus and the occupancy rate



To view all the details of the distribution of the beds available for Covid-19 patients in the various governorates according to the hospitals:

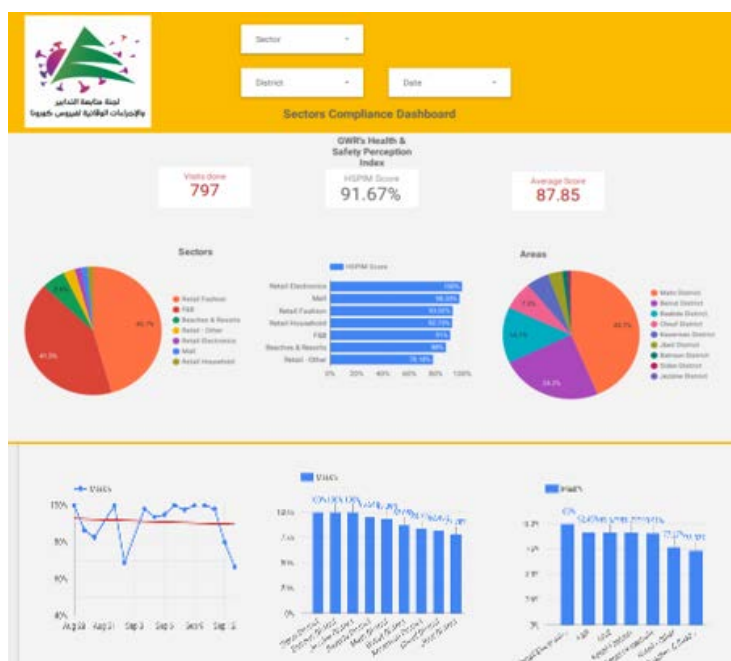
- Computer: <https://gisleb.cnrs.edu.lb/portal/apps/opsdashboard/index.html#/34b32db8030d4f229fc5db9ab686cca9>
- Mobile: <https://shorturl.at/cngJ2>

Online platform to track sector commitment in general mobilization procedures

Based on the recommendation issued by the National Committee for Follow-up of Preventive Measures and Measures to Confront the Coronavirus to open all sectors, provided that the general mobilization procedure (safe distance, muzzle, and hand sterilization) be applied, a special electronic platform was created that allows monitoring and measuring the percentage of commitment by various sectors on an ongoing basis.

The detailed results can be viewed directly at the following link:

<http://bit.ly/covidsectordata>



Decisions and actions taken – 14/09/2020

Ministry of Public Health

The Ministry of Public Health issued Circular No. 142 on 9/14/2020 to amend the procedures for arrivals to Lebanon. The Ministry of Public Health issued Memorandum No. 141 of 9/14/2020 regarding the adoption of the Covid-19 Patient Management Protocol based on the recommendations and directions issued by the Lebanese Society for Infectious and Clinical Diseases, available on the website:

<https://moph.gov.lb/userfiles/files/news/LSIDCM.pdf>

The Ministry of Public Health has opened the special section for receiving Corona cases at Bar Elias Governmental Hospital, which operates under the management of the "Doctors Without Borders" (MSF) organization, as part of increasing the hospitals' preparedness to confront the spread of the epidemic.

The Ministry of Public Health is following up, through the Department of Epidemiological Surveillance and the hotline, for those infected with the Coronavirus and their contacts, and it also organizes campaigns to conduct checks in various regions.

The Ministry of Public Health is following up, through the Department of Epidemiological Surveillance and the hotline, for those infected with the Coronavirus and their contacts, and it also organizes campaigns to conduct checks in various regions.

Arriving from	Company	Flight Number	Number of Positive Cases
11/09/2020			
Doha	Qatar Airways	416	1
Paris	TO	3980	4
Dubai	MEA	427	2
Paris	MEA	212	1
Cairo	MEA	266	1
Istanbul	MEA	266	3
12/09/2020			
Istanbul	Turkish Airlines	828	1
			13

Lebanese Red Cross

214,272	Number of PCR tests transferred to laboratories	44,268	Number of additional ambulance centers ready to respond	48	ambulance centers	4,766 (35 New)	cases transferred to hospitals
166	Number of volunteers trained to transfer PCR tests	1,498	Number of trained paramedics	8,547	total number of respondents	74,565	number of those benefiting from awareness *sessions
967	The number of university volunteers trained to follow up on prevention measures in companies and institutions	217	Number of university volunteers trained to conduct awareness sessions	550	total LRC volunteers for covid19	8,367	number of trained managers for isolation centers
4,349 (6 New)	Number of beneficiaries from educational electronic platforms COVID-19	87,759 (28 New)	Number of distributed equipment	1,230,122	total distributed posters, brochures, and flyers on covid19 prevention	486 (6 New)	number of prisons that have been disinfected

General Directorate of State Security

- Investigating and following up on suspected and positive cases and cases in home quarantine for residents and expatriates.
- Sending warnings and closing a number of violating commercial stores in the various regions.

Beirut	South	North	Akkar	Beqaa	Nabateih	Baalbek Hermel	Mount Leb
50%	50%	55%	N/A	N/A	80%	20%	45%

General Directorate of Internal Security Forces

- Internal Security Forces circulated the preventive measures that must be followed when traveling by cars and using shared transportation and public cars.
- Writing arrest records against violators of the general closure decision

The number of seizure records during the past 24 hours					The total number of records that have been organized against violators of the general mobilization decisions since 03/08/2020		
Written records of violating institutions (absorptive capacity and preventive measures)					4		
Written records of persons violating the decision to wear a mask					8	Beirut	20,603
Written records of people violating the general mobilization decision (Aragil* and social distancing)					83	Mount Leb	18,753
Total					95	Beqaa	7,990
						North	6,776
Beirut	Mount Leb	Beqaa	North	South	South	6,719	
10	70	9	0	6	Total	60,841	

Ministry of Public Works and Transportation

Departing Flights		Arriving Flights	
Number of Flights	30	Number of Flights	36
Number of Departing Individuals	3,307	Number of Arrivals	2,896

Port	Entered			Left			
	Import	Direction	#	Export	Direction	#	
Beirut	Containers	Antalya	1	Containers	Alexandaria	1	
				Containers	Cairo	1	
Tripoli	Blank	Cyprus	1	Blank	Alexandarun	1	
	Metals	Ukraine	1	Blank	Russia	1	
Zahrani	Fuel Oil	Kuwait	1	Fuel Oil	Zouk Port	1	
			4				5

General announcements

The implementation of the Ministry of Interior and Municipalities Decision No. 1056 of 9/8/2020 related to amending the opening and closing times of industrial and commercial establishments, as the timing of exit and entry into the streets was changed from the first hour after midnight until six in the morning, and the decision allowed bars and cabarets to open Nightclubs, electronic game stores, public parks, theaters, and cinemas, with strict enforcement of the preventive measures and measures adopted, provided that the swimming pools, indoor sports stadiums, amusement parks, and indoor spaces designated for children's games remain closed.

Note: The decisions can be found at www.drm.pcm.gov.lb

Examples of lack of adherence to safety measures

- Demand gatherings and demonstrations.
- Failure to comply with the preventive measures and procedures required in a number of stores and markets (putting on a muzzle or face mask, sterilizing hands, maintaining a safe distance).
- Non-compliance with the 50% occupancy rate in several restaurants and amusement game centers.
- Gatherings for social events.
- Failure of those in contact with confirmed cases to adhere to home isolation procedures until the results of the laboratory tests are issued.

If you feel any symptoms, call directly the hotline of the Ministry of Public Health: 1214 or 01/594459

A list of the laboratories accredited by the MoPH to conduct PCR tests

Public Hospitals			
Hospital Name	Location	Hospital Name	Location
Rafic Hariri University Hospital	Beirut	Bint Jbeil Governmental Hospital	Bint Jbeil
Tripoli Governmental Hospital	Tripoli	President Elias Hrawi Governmental Hospital	Zahle
Fattouh Keserwan Governmental Hospital	Kesrwen	Batroun Governmental Hospital	Batroun
Baalbek Governmental Hospital	Baalbek	Halba Governmental Hospital	Halba
Tibnin Governmental Hospital	Tibnine		
Private Hospitals			
Hospital/Lab Name	Location	Hospital/Lab Name	Location
AUBMC	Beirut	MLH	Baabda
Saint George Hospital	Beirut	Saint Georges Hospital	Baabda
Hôpital Notre Dame des Secours (CHU – NDS)	Jbeil	Ain w Zein Hospital	Chouf
HDF/Merieux/USJ	Beirut	Hamoud Hospital	Sidon
Makkassed General Hospitals	Beirut	Dar el Amal Hospital	Baalbek
LAUMC	Beirut	Sheikh Ragheb Harebb Hospital	Nabatieh
Wardieh Hospital	Beirut	Al Hadi Laboratory	Baabda
Al Mathlum Hospital	Tipoli	Akiki Laboratory	Byblos
Al Mounla Hospital	Tripoli	MDC	Tyr
Haykal Hospital	Koura	Jabal Amel Hospital	Tyr
Serhal Hospital	Metn	Doctor's Center	Beirut
HLG	Beirut	KML	Sidon
SDC	Nabteih	ADC*American Diagnostic Center	Beirut
INOIE Laboratory	Baabda	Khoury Hospital	Zahle
TRANSMEDICAL Laboratory	Metn	Sacre Coeur	Hazmieh
MCC	Zahle	BELLEVEUE Hospital	Mansourieh
CHN	Zaghrta	LMSE	Tripoli
Clinigen Laboratory	Hazmieh	Al Rasoul Al Aazam Hospital	Beirut
Centre Medical Moderne	Ghbraye	Nabni Hospital	Tripoli
MDTC	Hamra		

Note: Some positive test results are sent from the highlighted laboratories to the Ministry of Public Health, that does not include a phone number to track cases, which contributes to the spread of the epidemic and unknown cases