



Lebanon National Operations Room Daily Report on COVID-19

Wednesday, October 14, 2020

Report #210

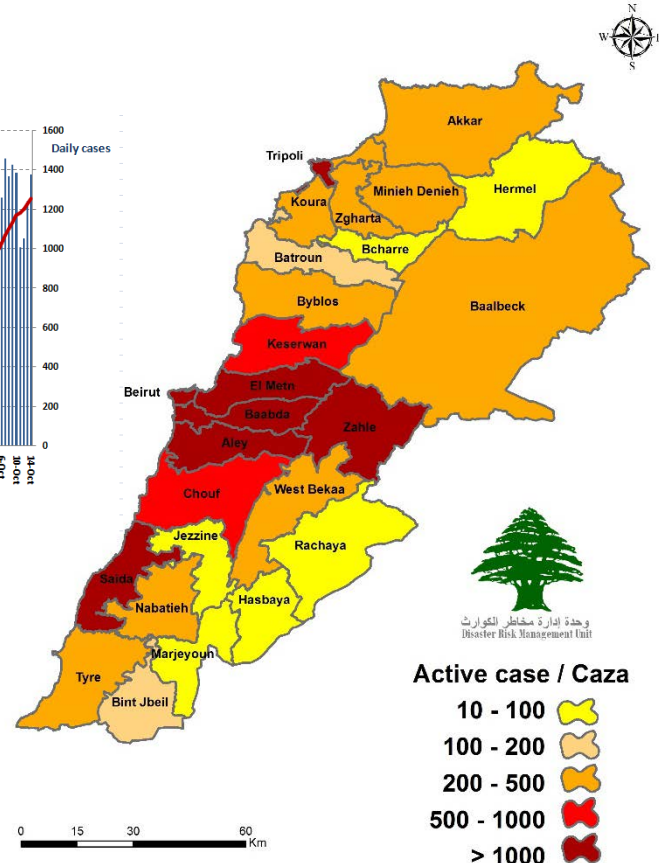
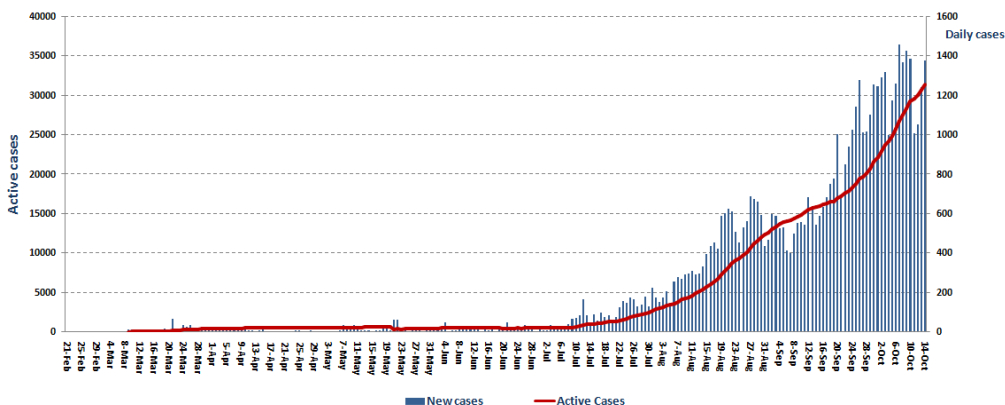
Time Published: 10:00 PM

1,377 New Cases		57,246 Total Cases since 21.2.2020		499 Total Deaths		25,164 Total Recovered	
1,362 Residents	15 Expats	55,455 Residents	1,791 Expats	20 New Deaths		583 New Recovered	
1,227 Total Cases in the Health Sector		31,583 Total Active Cases		619 Hospitalized Cases		192 Total Cases in ICU	
8 New Cases in the Health Sector		30,964 Cases in Home Isolation		427 Mild Cases		2 New Cases in ICU	
960,627 COVID-19 Tests since 21.2.2020		Lebanon Status compared to the World					
1,182 COVID-19 Tests at Airport within 24 hrs.		Total Cumulative		57,246		38,577,084	
13,260 COVID-19 tests for residents within 24 hrs.		Total Deaths		499		1,093,716	
		Deaths percentage		0,87%		2.83%	
		Total recoveries		25,164		28,976,445	

Ref: Ministry of Public Health Data

Number of Cases by Location

- 9,865 case is Under investigation



Active case / Caza

- 10 - 100
- 100 - 200
- 200 - 500
- 500 - 1000
- > 1000

Beirut	93
Ein Al Mreisseh	2
Qreitem	1
Raouche	5
Hamra	1
Snoubra	1
Mseitbeh	12
Mar Elias	4
Tallet Al Khayyat	1
Dar Al Fatwa	2
Zarif	2
Mazraa	13
Borj Abi Haidar	1
Basta Fawka	6
Tariq Al Jadidah	7
Ras Al Nabaa	3
Bashoura	2
Basta Tahta	2
Ashrafieh	12
Adlieh	1
Others	15
Baabda	268
Chiah	22
Jnah	1
Ouzai	4
Bir Hassan	2
Cite portif	1
Ghobeiry	11
Ein Al Rimmaneh	8
Forn Al Shubbak	6
Haret Hreik	37
Lailaki	10
Borj Al Barajneh	42
Mreijeh	18
Al Raml Al Aly	1
Tahweetet Ghadir	4
Baabda	7
Hazmieh	7
Hadat	44
Loueizy	1
Jumhour	1
Kfarshima	4
Shahrour Al Sofla	1
Shahrour Al Olya	3
Bsaba	2
Ras Al Metn	1
Kobbeih	1
Falougha	2
Others	27
Batroun	15
Batroun	6
Kfar Abida	2
Shekka	1
Shebteen	1
Dah Al Ghbar	2
Hamat	2
Tannurine Fawka	1

Chouf	38
Naameh	5
Chhim	4
Dalhoun	3
Sibline	1
Barja	5
Baaseer	2
Dibbiyyeh	1
Jiyyeh	2
Rmeileh	2
Joun	2
Zaarourieh	1
Deir AL Qamar	1
Jdeideh	1
Baqaata	3
Baadaran	1
Barouk	1
Others	3
Keserwan	120
Sarba	7
Kaslik	4
Zouk Michael	8
Ghadir	8
Zouk Mosbeh	10
Adonis	12
Haret Sakher	7
Sahel Alma	4
Kfar Yassine	2
Tabarja	4
Adma & Dafneh	6
Safra	2
Bouar	3
Ajaltoun	1
Chtouh	1
Ballouneh	4
Sehaileh	4
Jeita	3
Aintoura	1
Ghazir	8
Kfahbab	1
Bayader Ftouh	1
Chnaniir	1
Ghosta	1
Kfour	1
Bzommar	1
Dar'oun	2
Shahtoul	1
Ashkout	3
Feitroun	2
Raasheen	1
Kfardibian	1
Blat	1
Feitroun	1
Others	3
Jezzine	1
Kfarjarra	1

Zahleh	100
Al Maeidan	2
Hoch Al zaraaneh	1
Maallaqa	4
Oumara Al Arady	1
Hoch Al Oumara	6
Qaa Al Rim	2
Ksara	5
Chtoura	2
Jlala	3
Makseh	1
Taalabaya	23
Jdita	2
Taanayel	1
Saadnayel	21
Qab Elias	7
Hoch Qaysar	1
Bar Elias	3
Majdel Anjar	4
Riyak	2
Qousaya	1
Terbol	1
Others	7
Saida	93
Old Saida	2
Bramieh	1
Hlalieh	4
Haret Saida	3
Miyye w Miyyeh	1
Ein Al Helwe	21
Salhieh	1
Majdlyoun	2
Aabra	5
Bqosta	2
Ein Al Delb	1
Douwar Ghazieh	1
Zrarieh	2
Adloun	2
Bablieh	2
Kawthriyt Seyyad	2
Saksakieh	2
Kfar Melky	1
Others	38
Tyre	21
Rasheedieh	1
Borj Al Shemaly	1
Jouwaya	1
Yanouh	1
Maarakeh	2
Sadeeqeen	3
Bazourieh	1
Sreefa	1
Borj Rahal	1
Mansoury	1
Others	8

Matn	183
Borj Hammoud	12
Sin El Fil	6
Horch Tabet	1
Jesr Al Basha	4
Jdeidet Metn	8
Bouchrieh	2
Dora	6
Rawda	3
Sed Bouchrieh	2
Sabtieh	3
Deir Mar	1
Dekwene	18
Mkalles	1
Antelias	5
Jal El Dib	12
Naqqash	3
Zalka	15
Byaqout	2
Dbayyeh	6
Deir Aoukar	2
Mansouriyyeh	10
Fanar	7
Ein Saadeh	5
Roumieh	2
Bsalim	3
Mteileb	2
Rabieh	3
Beit Al Kukko	1
QorntChehwan	2
Elissar	1
Beit Al Shaar	4
Deek Al Mahdi	1
Ein Aar	1
MazrtYashouh	5
Zikrit	1
Beit Shabab	2
Bhorsaf	1
Kharroubeh	1
Hemlaya	1
Broummana	4
Jouret Ballout	2
Baabdat	1
Beit Merry	5
Monteverde	1
Bteghreen	1
Airoun	1
Others	3
Western Beqaa	15
Mashghara	2
Kamed Al Loz	1
Khiyara	1
Manara	1
Hareemeh	1
Sweiry	3
Marej	1
Others	5

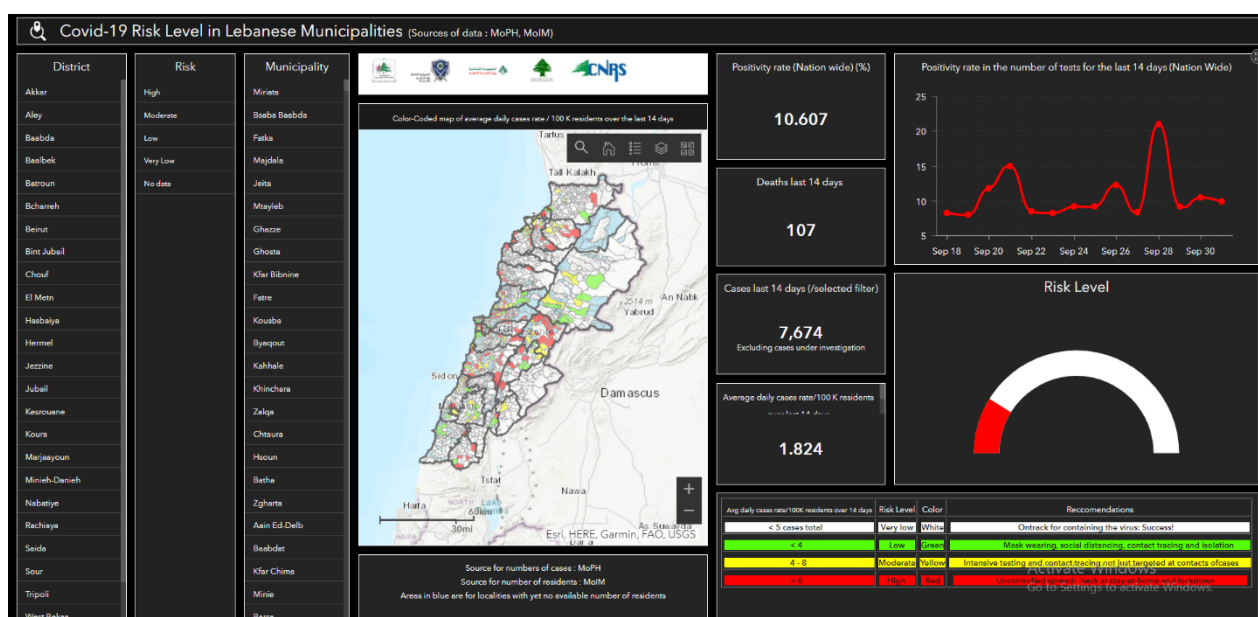
Aleyh	58
Al Amrousieh	6
Hay Al Sillom	10
Al Qebbe	1
Khaldeh	3
Al Oumara	7
Aramoun	8
Bshamoun	10
Bleibel	3
Aley	5
Qomatieh	1
Aitat	1
Eghmeed	1
Others	2
Tripoli	52
Zaytoun	6
Jesrein	1
Qebbeh	6
Zahrieh	2
Tabbaneh	1
Mina	13
Bsatine Al Mina	11
Beddawy	2
Others	10
Menyeh Dunniyyeh	16
Deir Aamar	1
Menyeh	6
Bhannine	3
Bqaa Sefreen	1
Bakh'oun	3

Byblos	37
Byblos	6
Mastita	3
Blat	2
Eddeh	4
Amshit	3
Halat	4
Fidar	1
Hosrayel	1
Monsef	1
Meshmesh	1
Annaya	2
Hsoun	1
Adonis	2
Ramout	1
Shamat	1
Hboub	2
Gherfine	1
Others	1
Koura	11
Kfar Saroun	1
Kosba	2
Fee'h	1
Anfeh	2
Dahr Al Ein	3
Nakhleh	1
Others	1
Marjeyoun	3
Debbeen	1
Mays Al Jabal	1
Majdel Silim	1

Nabateih	16
Nabatieh Tahta	3
Nabatieh Fawka	1
Al Mnazleh	1
Kfarremman	1
Habbouch	1
Kfour	1
Ein Bosoir	1
Arab Salim	2
Deir AL Zahrary	1
Toul	1
Nmeiriyyeh	1
Dweir	1
Aabba	1
Bint Jbeil	11
Ein Ebel	1
Rmeish	1
Harees	6
Kfardounin	1
Kafra	1
Others	1
Hermel	3
Mansoura	1
Others	2
Rashayya	3
Rashayya Wady	2
Others	1
Others	158

Akkar	24
Halba	1
Menyara	1
Takreet	1
Old Akkar	3
Saadeen	1
Semqanieh	1
Bebnine	5
Nahr Al Bared	2
Abdeh	1
Brqayel	1
Hmeira	1
Fneidek	1
Wady Jamous	1
Qobayyat	1
Andkit	1
Others	2
Zghorta	11
Erdeh	1
Beit Aoukar	1
Haret fouwar	1
Aalma	1
E'aal	1
Qazhayya	3
Meryata	2
Others	1
Hasbayya	4
Hasbayya	1
Fardees	1
Kfar Hamam	1
Meemes	1

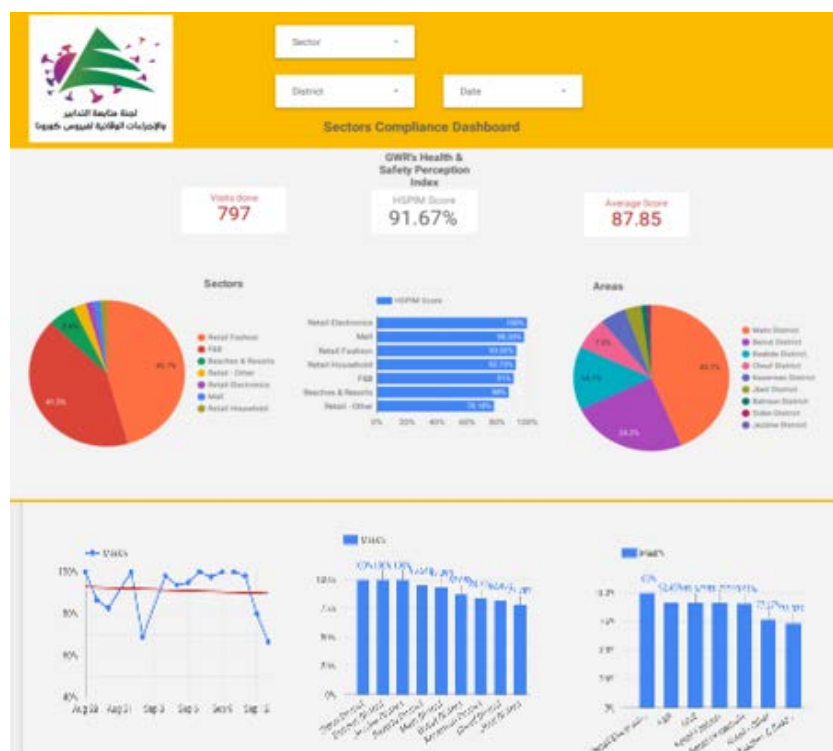
The Online platform to measure the level of risk of the spread of the new Corona virus



This interactive platform allows you to know the level of risk of spreading the kurna virus according to districts, based on the number of cases registered daily and the number of residents in each district. For more information on a daily basis, you can access the following link:

<https://bit.ly/DRM-RiskLevelInMunicipalities>

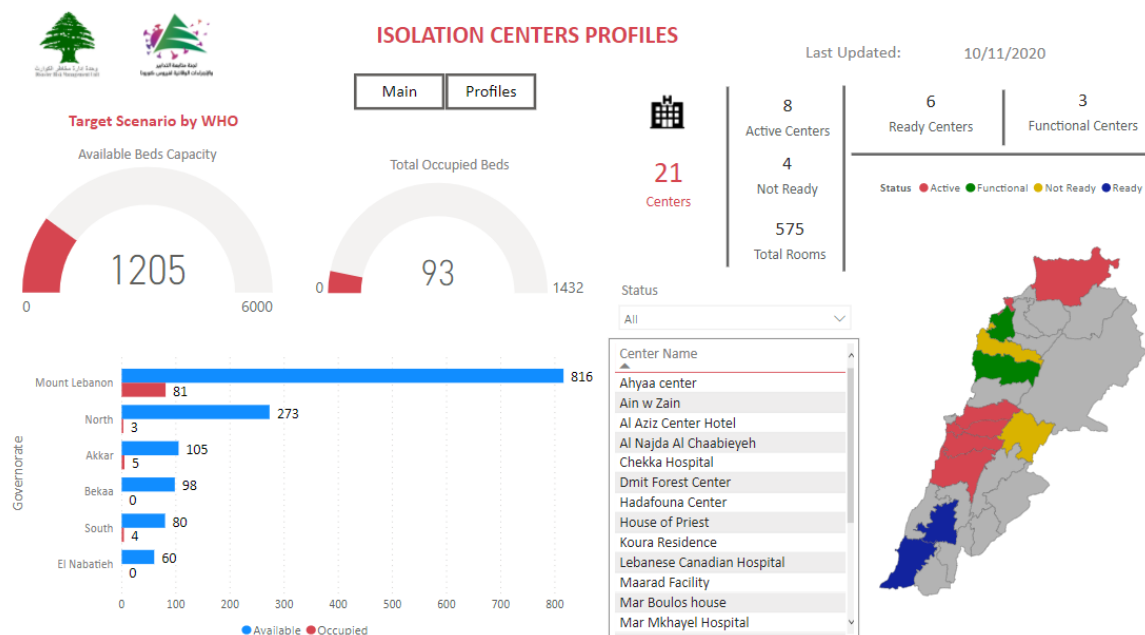
Online platform to track sector commitment in general mobilization procedures



Based on the recommendation issued by the National Committee for Follow-up of Preventive Measures and Measures to Confront the Coronavirus to open all sectors, provided that the general mobilization procedure (safe distance, muzzle, and hand sterilization) be applied, a special electronic platform was created that allows monitoring and measuring the percentage of commitment by various sectors on an ongoing basis. The detailed results can be viewed directly at the following link:

<http://bit.ly/covidsectordata>

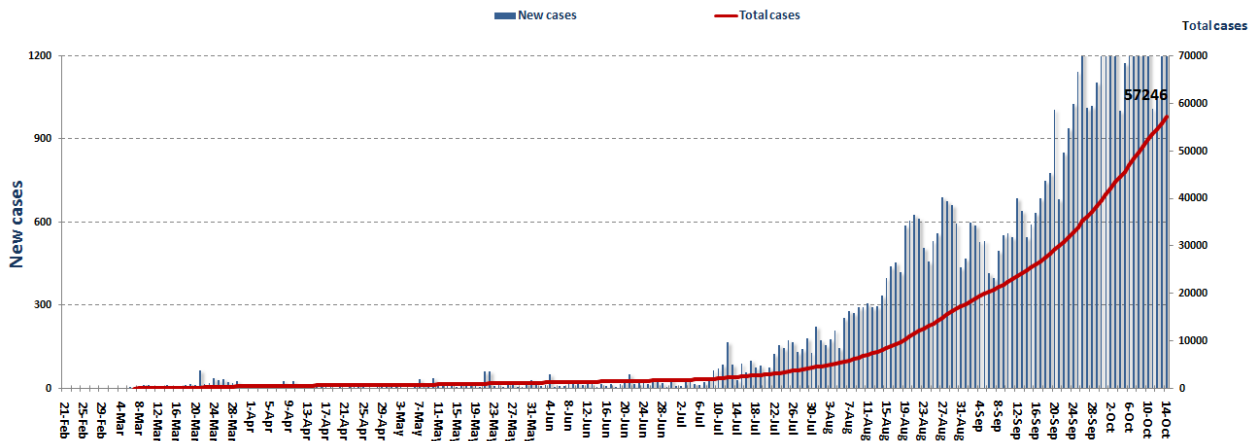
Occupancy rate of isolation centers for cases infected with Coronavirus



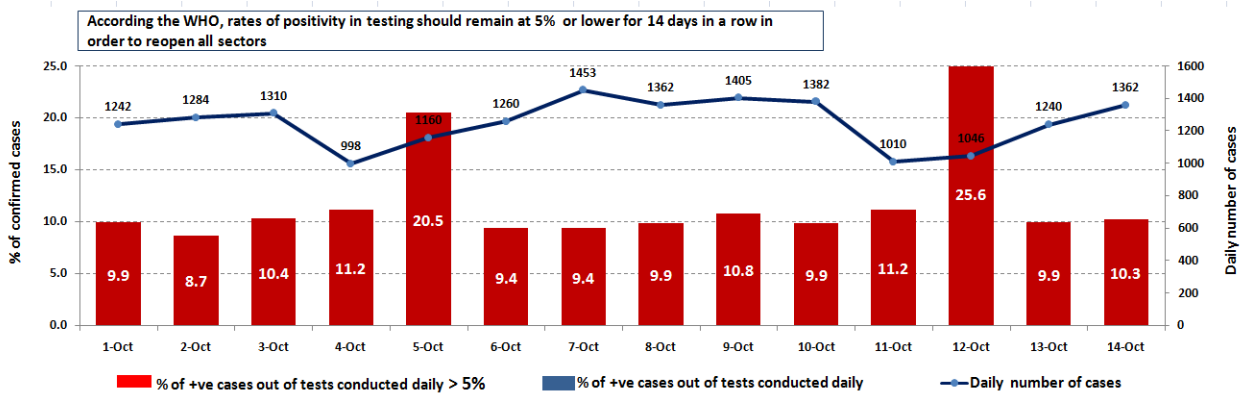
For more information about the isolation centers' distribution and the percentage of their occupancy, enter the following link: <http://bit.ly/DRM-IsolationCentersProfiles>

Note: These centers have been equipped in cooperation between the National Committee for Follow-up of Preventive Measures and Measures to Confront the Coronavirus and Governors and Municipalities, the United Nations Development Program, the World Health Organization, UNICEF, the Ministry of Public Health, the Syndicate of Nurses in Lebanon and the Syndicate of Specialists in Social Work.

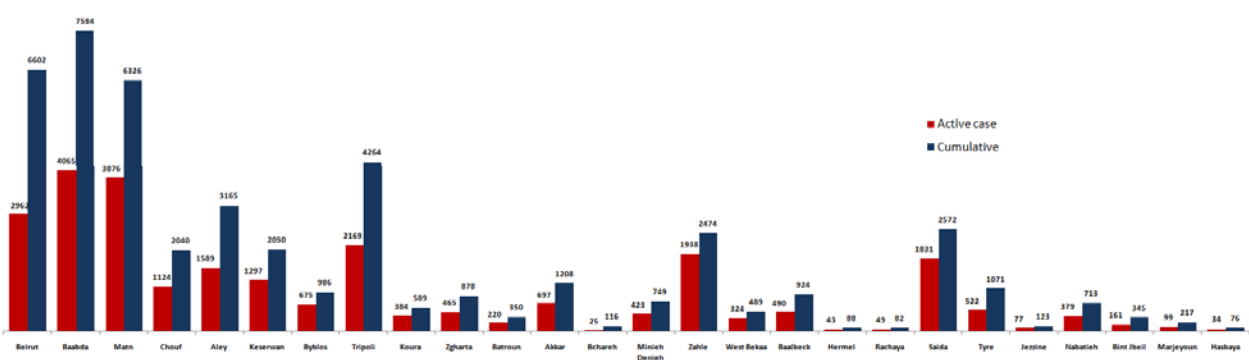
Cases per day



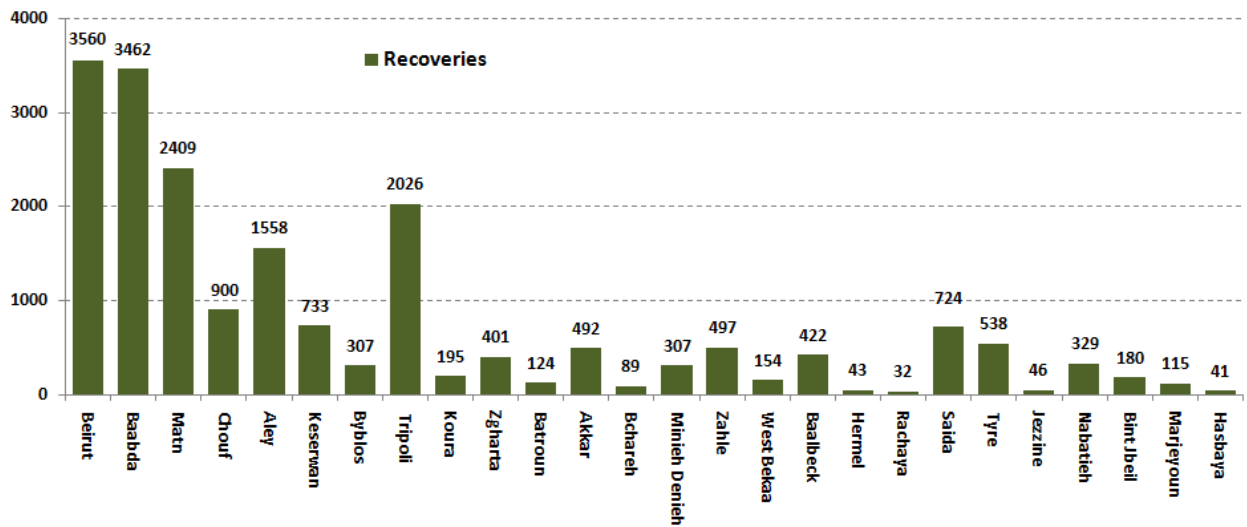
The percentage of positive cases out of the number of daily checks (1-13 October 2020)



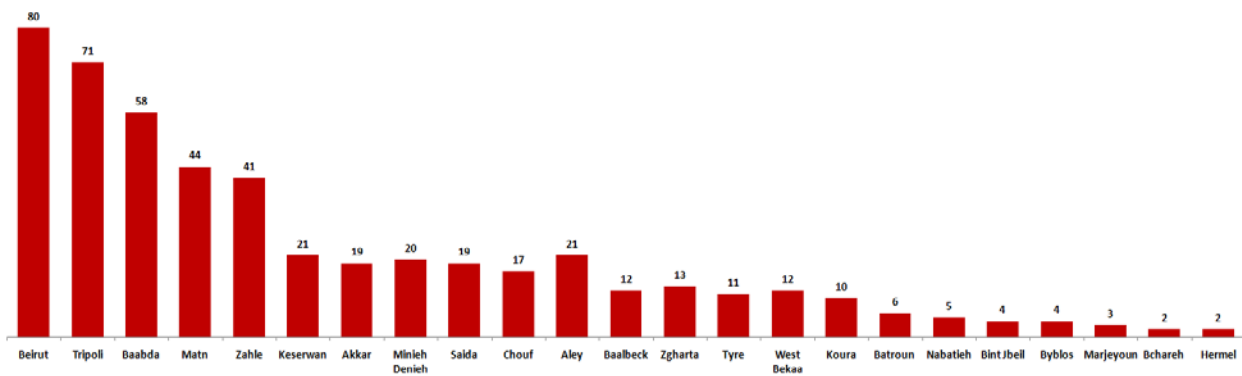
Distribution of Active Cases by Districts



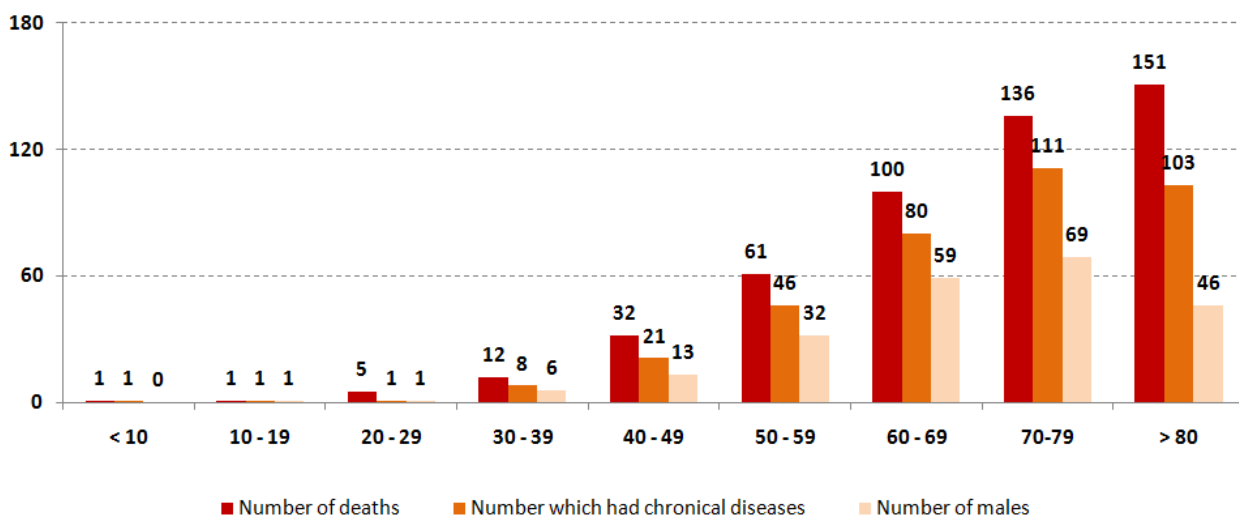
Recoveries



Distribution of deaths by Governorates



Distribution of deaths by Age

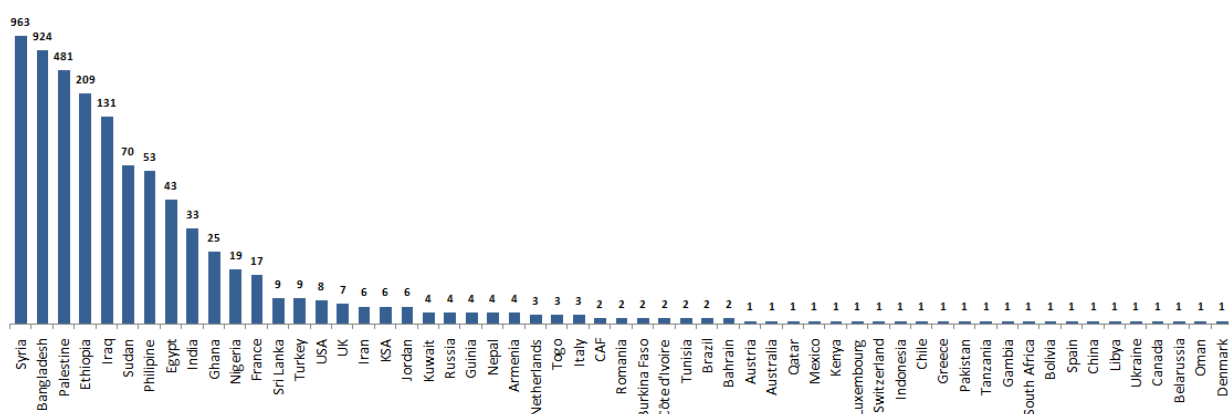


The distribution of the recorded deaths during the past 24 hours

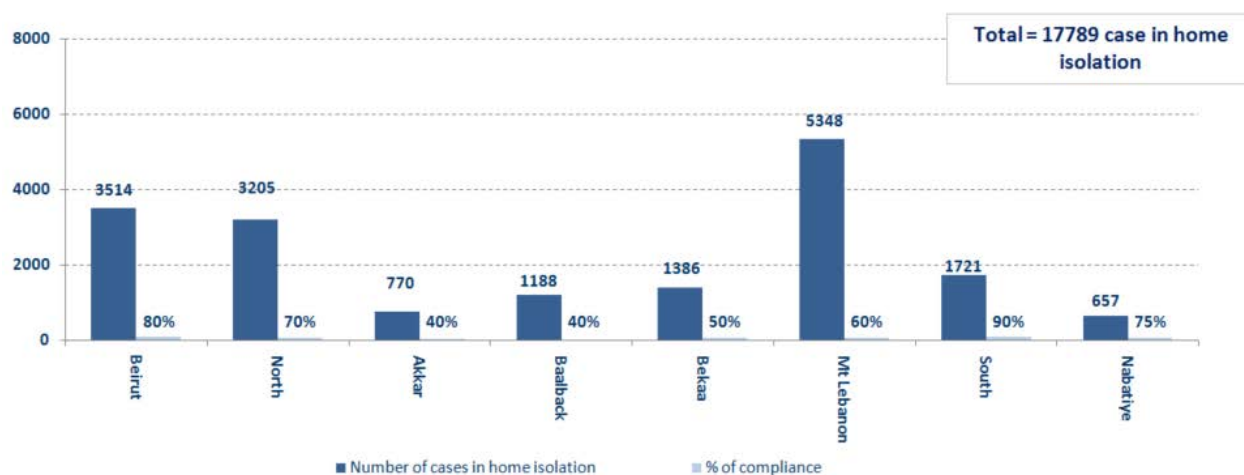
Hospital	Residence	Gender	Age	Chronic
El NiNi	Tripoli	Female	61	
Mar Yousef	Maten	Female	62	
Tripoli Gov.	Zgharta	Male	71	Yes
Tripoli Gov.	Minieh Denieh	Female	89	No
Tripoli Gov.	Tripoli	Male	64	No
Berri Gov	Saida	Male	64	Yes
Ain w Zain	Aley	Female	76	No
Ain w Zain	Chouf	Male	65	Yes
Ain w Zain	Aley	Male	60	No
Hotel Dieu	Keserwan	Male	73	Yes
Rizk	Maten	Male	93	Yes
Seblin Gov.	Saida	Male	54	Yes
Home	Aley	Female	41	Yes
Herawi Gov.	Zahle	Male	92	Yes
Herawi Gov.	West Bekaa	Male	74	Yes
Hamed Farhat	Zahle	Male	71	Yes
Arez/Riyak	Bchareh	Female	83	Yes
Notre Dame	Maten	Male	84	Yes
Notre Maritime	Jbeil	Male	80	Yes
Saint George	Baabda	Female	75	Yes

Distribution of cases by nationality

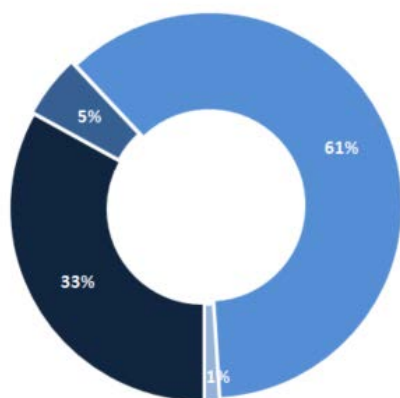
Lebanese : 52867 cases out of 57246 (88%)



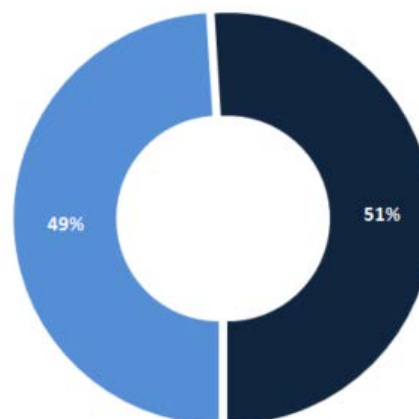
Number of individuals in home isolation and percentage of commitment to isolation



Exposure



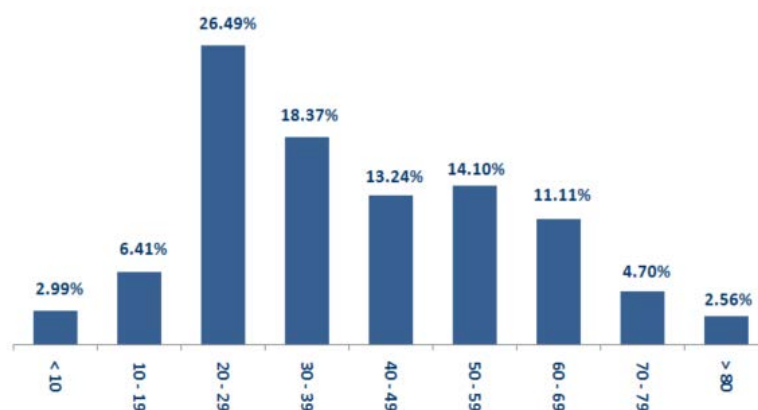
Distribution according to gender



■ Contact with confirmed case ■ Travel related ■ Under investigation ■ Unidentified source

■ Female ■ Male

Distribution by age



Decisions and actions taken – 10/14/2020

Ministry of Public Health

The Ministry of Public Health announced that the numbers of Coronavirus infections at this stage of partial closure are not reassuring, and that all current scientific data and indicators indicate a high degree of risk for the local virus outbreak, as the examinations conducted by field teams affiliated with the Ministry of Public Health show that the incidence of infections ranged between 9 and 10%, noting that these examinations are no longer limited to close contacts, but also affect the third and fourth cycle of the infected, in addition to the various bodies in their communities that have mixed with them, and the percentage of those who were infected without symptoms is 6%. The Ministry of Public Health stated that the weekly infection rate per 100,000 people is (169.2%), which is close to the rate in the United Kingdom, and surpasses Spain (151.6%) and Jordan (90.2%)

- Within the framework of implementing its strategy to increase the number of intensive care beds, the Ministry clarified that the percentage of those in need of intensive care in Lebanon ranged between five and six per thousand, but the danger is the limited number of intensive care beds, as the Ministry was able to add 61 beds in the last two weeks in government hospitals in various Lebanese regions.

Arriving from	Company	Flight Number	Number of Positive Cases
N/A			
Total			0

Lebanese Red Cross

234,025	Number of PCR tests transferred to laboratories	48,857 (255 New)	Number of additional ambulance centers ready to respond	48	ambulance centers	6,321 (54 New)	cases transferred to hospitals
166	Number of volunteers trained to transfer PCR tests	1,498	Number of trained paramedics	8,760 (6 New)	total number of respondents	84,244 (1832 New)	number of those benefiting from awareness *sessions
967	The number of university volunteers trained to follow up on prevention measures in companies and institutions	291	Number of university volunteers trained to conduct awareness sessions	550	total LRC volunteers for covid19	8,646 (6 New)	number of trained managers for isolation centers
4,280 (2 New)	Number of beneficiaries from educational electronic platforms COVID-19	95,639 (86 New)	Number of distributed equipment	1,242,498	total distributed posters, brochures, and flyers on covid19 prevention	620 (6 New)	number of prisons that have been disinfected

General Directorate of Internal Security Forces

The number of seizure records during the past 24 hours					The total number of records since 03/08/2020	
Written records of violating institutions (absorptive capacity and preventive measures)				6		
Written records of persons violating the decision to wear a mask				5	Beirut	20,848
Written records of people violating the general mobilization decision (Aragil* and social distancing)				548	Mount Leb	19,559
Total				559	Beqaa	8,283
					North	7,235
Beirut	Mount Leb	Beqaa	North	South	South	7,241
80	170	81	131	97	Total	62,577

General Directorate of State Security

- Reporting new injuries to the General Directorate of State Security, bringing the total number of injured to 67 cases.
- Report on the opening of schools in various Lebanese regions in accordance with the decision of the Ministry of Education and Higher Education.
- Reporting the percentage of compliance with the general mobilization decision in the governorates, which came as follows within the past 24 hours:

Beirut	South	North	Akkar	Beqaa	Nabateih	Baalbek Hermel	Mount Leb
52%	51%	42%	40%	40%	70%	N/A	40%

General Directorate of General Security

- A statement about the closure of the two pens of Antelias and Bikfaya due to the presence of Coronavirus infections.
- Reporting the commitment of the municipalities to the decision of the Minister of Interior and Municipalities:

Municipalities that abided by the decision	Municipalities didn't abide by the decision
Hamat, Kafr Ubaida, Dalhamiya, Kfar Zabad, Hosh Halan, Terbol, Ferzol, Qaa Al-Reem, Saadnayel, Bar Elias, Chtoura, Al-Bawarij, Khirbet Qanfar	Chekka, Rayak, Muhammarah, Batroun, Rumaila, Shaheim, Barja, Houmal, Bint Jbeil, Rmeish, Badal, Arabsalim, Numairiya

- Follow up the implementation of the required security and preventive measures at the airport, ports and border crossings.
- Reporting cases registered in the various districts and cases in home quarantine.

Ministry of Public Works and Transportation

Departing Flights		Arriving Flights	
Number of Flights	38	Number of Flights	39
Number of Departing Individuals	3,133	Number of Arrivals	2,763

Port	Entered			Left		
	Import	Direction	#	Export	Direction	#
Beirut	Containers	Limasoul	1	Containers	Tripoli	1
Tripoli	Containers	Laranka	1			
Total			2			1

General announcements

The Ministry of Interior and Municipalities issued Decision No. 1252 on 10/13/2020 related to amending the schedule of villages and towns that have been closed due to the high number of Coronavirus infections in them, as the towns of Naqoura, Jal el Dib, Za'ariyah, Batroun, Roumieh, Bikfaya - Al Muhaiditha, Bint Byblos from the attached table in Resolution No. 1250 issued on 10/11/2020, and the towns of Bakhoun, Naameh and Haret Al-Naameh shall be added to the table attached to the decision. Provided that consideration will continue to restore the situation to normal in the closed towns and villages, based on the results of the examinations.

Implementing the decision issued by the Ministry of Interior and Municipalities No. 1250 on 11/10/2020 related to the closure of some villages and towns due to the high number of cases of Coronavirus in them, based on the recommendations of the Committee for Follow-up of Measures and Preventive Measures of Coronavirus The main highlights of the decision:

- Closure of the towns listed in the decision starting from 6:00 a.m. on Monday 10/10/2020 until 6:00 a.m. on Monday 10/19/2020, provided that work stops in all official and private administrations and institutions located within those villages and cancellation All social events, parties, parties and gatherings of all kinds, and coordination with the clergy to close the houses of worship. The decision specified the sectors excluded from the closure decision.
- Keeping work at the time of preventing exit and entering the streets and roads between the first hour after midnight until six in the morning.
- Determining the number of people traveling by public and private transportation (3 people in public cars, 4 people in private cars, half the carrying capacity of common transport vehicles and buses).
- A complete closure until further notice, without any exceptions, for all bars, cabarets, and nightclubs on all Lebanese territories, subject to the risk of referring the violators to the competent court.
- The commitment of citizens in all regions to wear masks, maintain safe distances, and avoid overcrowding.
- Assigning governors to determine the municipal zone in the major towns included in the decision and overlapping with other towns, taking appropriate measures to implement the content of the decision, stressing citizens in villages and towns that will be closed with the necessity to stay in homes and not to walk around and to wear masks when forced movement
- Assigning the General Directorate of Internal Security to strictly enforce this decision and suppress violations, and to organize arrest records against violators.

Note: The decisions can be found at www.drm.pcm.gov.lb

Examples of lack of adherence to safety measures

Failure of some municipalities to abide by the Ministry of Interior and Municipalities Decision No. 1025/2020 related to the closure of towns that have a high risk of the spread of the epidemic.

- Demand gatherings and demonstrations.
- Failure to comply with the preventive measures and procedures required in several stores and markets (putting on a muzzle or face mask, sterilizing hands, maintaining a safe distance).
- Non-compliance with the 50% occupancy rate in several restaurants and amusement game centers.
- Gatherings for social events.
- Failure of those in contact with confirmed cases to adhere to home isolation procedures until the results of the laboratory tests are issued.

If you feel any symptoms, call directly the hotline of the Ministry of Public Health: 1214 or 01/594459

A list of the laboratories accredited by the MoPH to conduct PCR tests

المختبرات الحكومية المؤهلة لإجراء التشخيص المخبري لفيروس كورونا بطريقة الـ RT-PCR

الموقع	المختبر
بيروت	مستشفى رفيق الحريري الجامعي RHUH
حيفا	مستشفى حيفا الحكومي
طرابلس	مستشفى طرابلس الحكومي
البزرون	مستشفى البزرون الحكومي
كسروان	مستشفى فتوح كسروان الحكومي (البوار)
البيشة	مستشفى نبيه بزي الحكومي الجامعي
نينين	مستشفى نينين الحكومي
بنت جبيل	مستشفى بنت جبيل الحكومي
بعلبك	مستشفى بعلبك الحكومي
زحلة	مستشفى الرئيس الياض الهراوي الحكومي

مختبرات المستشفيات العسكرية

بيروت	المستشفى العسكري المركزي في بيروت Hôpital Militaire Central
-------	---

المختبرات المؤهلة لأخذ عيّات "المسحات الأنفية" بطريقة Drive- thru

بيروت	مختبر مديكال دياغنوستيك تريتماننت سنتر (الحمراء) Medical Diagnostic Treatment Center (MDTC)
بيروت	مختبر ميد لاب MedLab SAL CIC ALS (الحمراء - الجبلين)
بيروت	مختبرات عيتاني Itani Medical Laboratories (المزرعة)
الأشرفية	مختبر أ ب سي ABC Laboratories
الشياح	مختبرات معوض الطبية Mouawad Medical Laboratory
الشياح	مختبرات الشياح (د. فؤاد ربحان) Riham Medical Center
المنصورة	مختبر إكسبرت لاب Expert Lab
بعلبك	مختبر لايف لاب Life LAB
رياق	مستشفى الرياق Riyak Hospital

المختبرات الخاصة المؤهلة لإجراء التشخيص المخبري لفيروس كورونا بطريقة RT-PCR

الموقع	المختبر
بيروت	مستشفى الجامعة الأميركية AUBMC
بيروت	مستشفى أوتيل ديو الجامعي Hotel-Dieu de France (HDF)
بيروت	مختبرات رودولف ميريو (الجامعة اليسوعية - المتحف) Laboratoire Rodolphe Mérieux (Université Saint-Joseph)
بيروت	مستشفى القديس جاورجيوس الجامعي Saint-George Hospital - UMC
بيروت	مستشفى المقاصد Makassed General Hospital
بيروت	مستشفى رزق الجامعي LAU Medical Center - Rizk Hospital
بيروت	مستشفى اللبناني الجعيتاوي الجامعي Hôpital Libanais Geitawi - CHU
بيروت	مستشفى الوردية Hôpital Notre-Dame du Rosaire
بيروت	مختبر مركز الأطباء Doctor 's Center
بيروت	مختبر فونتانا (الحمرا) Fontana Laboratories
بيروت	مختبر الأمن العام (العدلية)
بيروت	مختبرات جبر وغرة Laboratoire Jabre-Ghorra
بيروت	مختبر السان مارك Saint Marc Medical & Diagnostic Center
الغري	المختبرات الحديثة Laboratoire Moderne (Modern Lab- Berjaoui)
الغري	مستشفى الساحل Sahel General Hospital (SGH)
الغري	مستشفى الزهراء الجامعي
برج البراجنة	مستشفى الرسول الأعظم Al Zahraa Hospital - UMC
بيروت	مستشفى بهمن
بيروت	مختبر ناتيونال دياغنوستك سرفيس كومباني Bahman Hospital Al Rassoul Al Aazam Hospital
بيروت	مختبر ناتيونال دياغنوستك سرفيس كومباني National Diagnostic Services Company (NDSC)
المرجعة	مختبر الدكتور محمود عثمان - مركز التحاليل الطبية Medical Diagnostic Center
الجناب	مختبر أميريكين دياغنوستك سنتر American Diagnostic Center (ADC)
بيعا	مستشفى جبل لبنان Mount Lebanon Hospital
بيعا	مستشفى السان جورج الحدث Hôpital Saint-George – Hadath
بيعا	مختبر الهادي Al Hadi Laboratory
بيعا	مختبر INOVIE-Liban

الحازمية	مستشفى قلب يسوع Hôpital du Sacré- Coeur
الحازمية	مختبر كلينيجان Clinigene
المن	مستشفى سرحال Hôpital Dr.Samir Serhal
المن	مختبر ترانسميديكال فور ليف Transmedical for Life
الزلفا	مستشفى هارون Haroun Hospital
المنصورة	مستشفى بلغو Bellevue Medical Center (BMC)
الكررة	مستشفى هيكال Hôpital Albert Haykal
زغرتا	مركز الشمال الإستشفائي Centre Hospitalier du Nord (CHN)
طرابلس	مستشفى المظلوم Mazloum Hospital
طرابلس	مستشفى المنلا Al Mounla Hospital
طرابلس	مستشفى النيني Nini Hospital
طرابلس	مختبر ميكروبيولوجيا الصحة والبيئة LMSE - المعهد العالي للدكتوراه، الجامعة اللبنانية
جبل	مستشفى سيدة المعونات الجامعي CHU - Notre-Dame des Secours
جبل	مختبر عقيقي وبولس Lab Akiki & Boulos
جونية	مختبر واكيم Centre Médical Wakim
الشوف	مستشفى عين وزين Ain Wazein Hospital
صيدا	مستشفى حمود الجامعي Hammoud Hospital UMC
صيدا	مختبر الكريم Al Karim Medical Laboratory (KML)
البيقنة	مستشفى الشيخ راغب حرب Sheikh Ragheb Harb Hospital
البيقنة	مختبر المنيح Sabbah Diagnostic Center (SDC)
صور	مستشفى جبل عامل Jabal Amel Hospital
صور	مختبر المشرق Mashrek Diagnostic Center (MDC)
بعيك	مستشفى دار الأمل الجامعي Dar Al Amal University Hospital
زحلة	مستشفى خوري Khoury General Hospital
زحلة	مختبر ميديكال كير سنتر Medical Care Center (MCC)