



Lebanon National Operations Room

Daily Report on COVID-19



Saturday, November 14, 2020

Report #241

Time Published: 10:30 PM

New in the report:

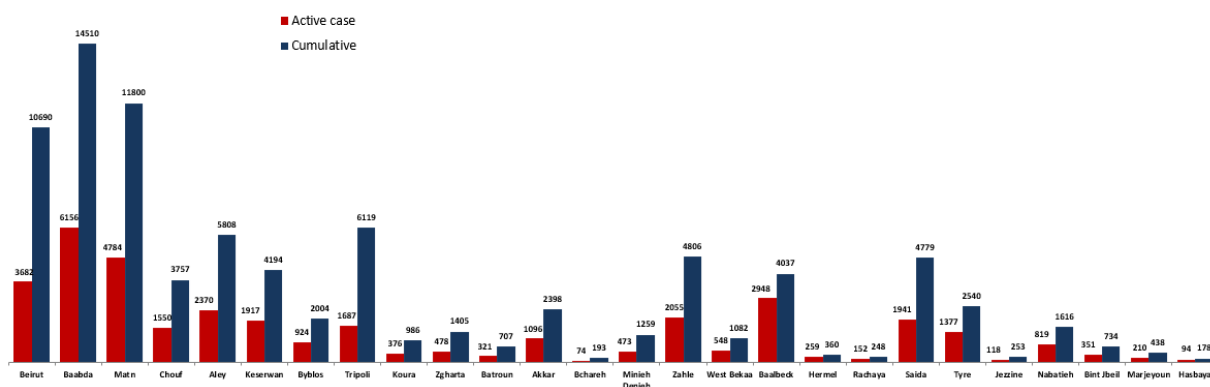
- Violations of the Ministry of Interior and Municipalities Decision No. 1432 dated 11/12/2020.
- Decision issued by the Ministry of Interior No. 1432 on 11/12/2020 regarding the implementation of the Supreme Defense Council's decision to close to confront the high number of Corona injuries, starting from 11/14/2020 until 11/30/2020

1,660 New Cases		104,267 Total Cases since 21.2.2020		806 Total Deaths		59,045 Total Recovered	
1,654 Residents	6 Expats	101,681 Residents	2,586 Expats	10 New Deaths		1,352 New Recovered	
109 Deleted Status due to its recurrence		1,574 Total Cases in the Health Sector		44,416 Total Active Cases		845 Hospitalized Cases	
14.7% Positivity rate		14 Cases in the Health Sector		43,571 Cases in Home Isolation		126 Ventilated Cases	3 New Cases in ICU
						310 Total cases in ICU	535 Mild cases
1,344,125 COVID-19 Tests since 21.2.2020				Lebanon Status compared to the World			
							
				Total Cumulative		104,267	
				Total Deaths		806	
				Deaths percentage		0,77%	
				Total recoveries		59,045	
						54,082,646	
						1,314,389	
						2.43%	
						37,693,734	

824 COVID-19 Tests at Airport within 24 hrs.		13,074 COVID-19 tests for residents within 24 hrs.	
--------------------------------------------------------	--	--------------------------------------------------------------	--

Ref: Ministry of Public Health Data

Number of Cases by Location

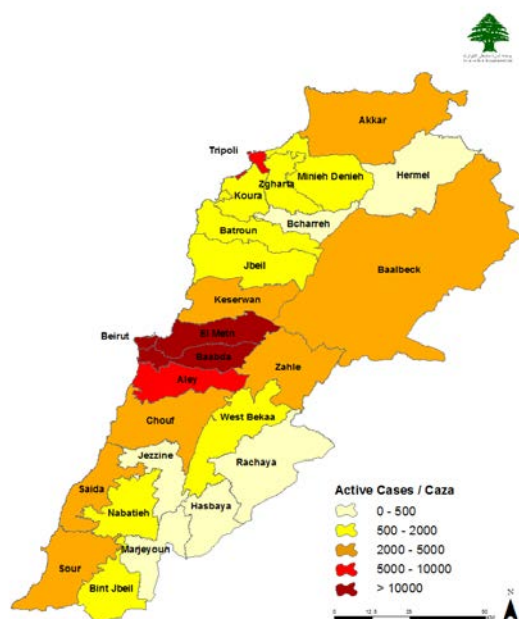


Ref: MoPH data

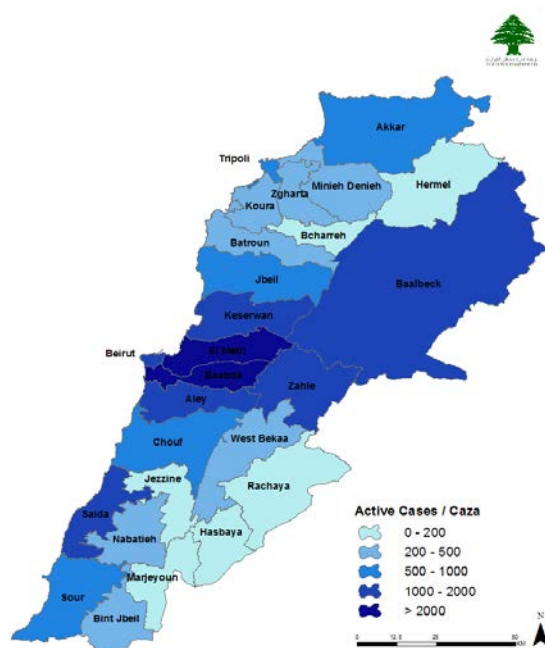
All reports and related decisions can be found at: <http://drm.pvm.gov.lb>

Or social media @DRM_Lebanon

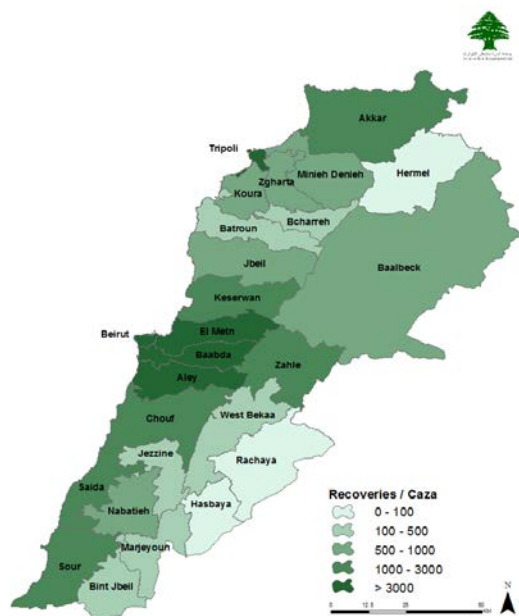
Distribution of Cumulative Cases



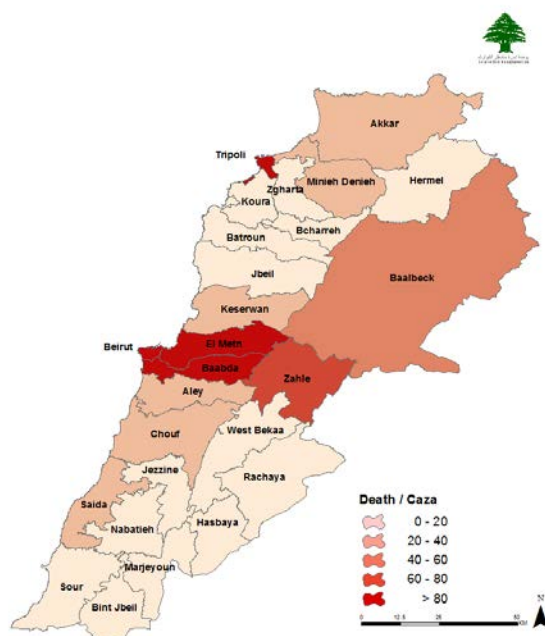
Distribution of Active Cases



Distribution of Recovery Cases



Distribution of Death Cases



Ref: MoPH data

All reports and related decisions can be found at: <http://drm.pvm.gov.lb>

Or social media @DRM_Lebanon

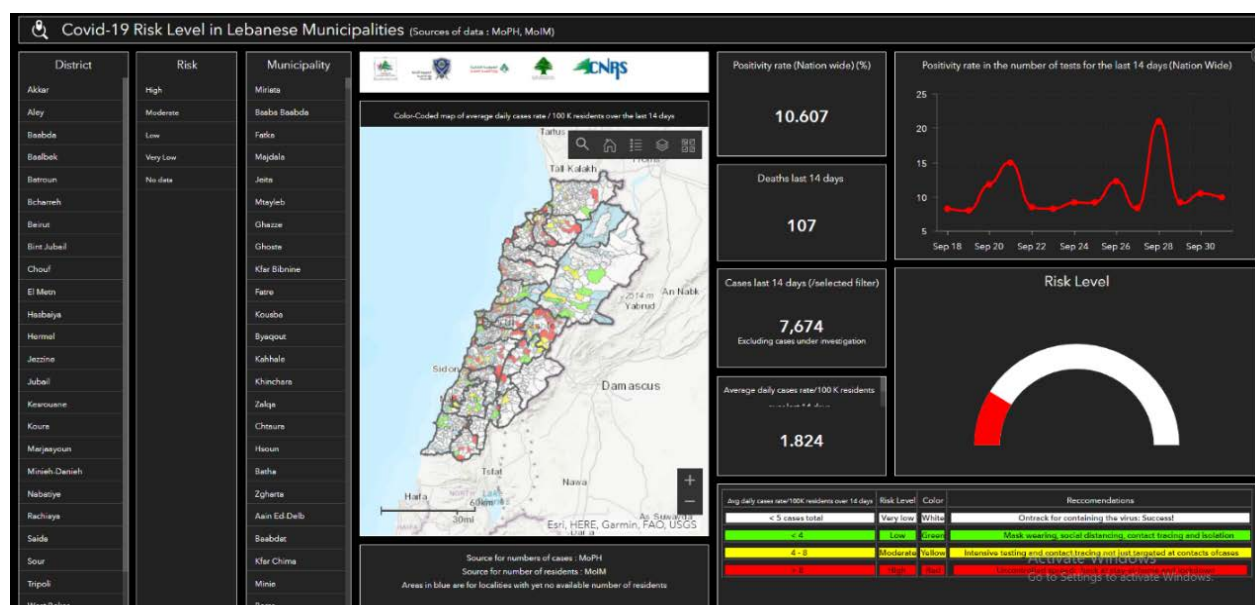
Distribution of Cases by Villages

Beirut	144	Baabda	261	Maten	199	Chouf	43	Kesserwan	59	Tripoli	56
Ein El Mraisseh	2	Chiyah	17	Borj Hammoud	10	Damour	1	Sarba	1	Zeitoun	10
Ras Beirut	1	Jnah	8	Nabaa	2	Saadiyat	3	Kaslik	1	Bab El Raml	1
Qreitem	1	Ouzai	12	Sin El Fil	5	Haret El Naameh	1	Zouk Mikhael	8	Al Tal	7
Rouchéh	3	Bir Hassan	1	Horch Tabet	4	Chhim	4	Ghadir	4	El Qoubbeh	10
Hamra	8	Mahatet Sfeir	1	Jisir El Bacha	2	Daraya	2	Zouk Mosbeh	6	Zahrieh	3
Ein Al Tineh	1	Ghobeiry	18	Jdaidet El Matn	10	Ketermaya	1	Adonis	1	Bsatine	4
Mseitbeh	3	Ein Al Rimmaneh	16	Bouchrieh	4	Sibline	2	Haret Sakhr	2	Mina N:1	5
Mar Elias	2	Forn Al Shebbak	1	Dora	2	Bourjein	1	Sahel Alma	4	Beddawy	5
Tallet El Khayat	3	Haret Hreik	36	Rouda	5	Barja	15	Adma & Dafneh	3	Madina El Jdideh	2
Zarif	9	Leilaky	9	Sed Al Bouchrieh	4	Jiyeh	2	Safra	1	Others	15
Mazraa	15	Borj El Brajneeh	36	Sabtieh	10	Wady Al Zeiny	1	Bouar	3	Koura	11
Borj Abi Haidar	1	Mreijeh	10	Deir Mar Roukoz	3	Sbaba	1	Oqeibeh	1	Amyoun	1
Basta Al Fawka	3	Tahweetet Al Ghadir	5	Dekweneh	22	Semqanieh	1	Aajaltoun	2	Dar Baashtar	1
Amlieh	1	Baabda	10	Mkalles	3	Kfarhim	1	Ballouneh	1	Kousba	1
Malaab El Baladi	1	Hazmieh	3	Antelias	6	Ein Zhalta	1	Seheileh	2	Btouratij	1
Tariq Al Jdideh	14	Fayadieh	1	Jal El Dib	10	Baaqline	4	Ein Al Rihaneh	1	Kefraya	1
Ras Al Nabaa	16	Yarzeh	1	Naggach	2	Jbaa	1	Ghazir	2	Deddeh	1
Basta Al Tahta	6	Hadat	34	Zalqa	7	Barouk	1	Kfar Hbab	4	Dahr El Ein	2
Geitawi	5	Boutchay	1	Byaqout	9	Aley	106	Borj El Ftouh	1	Others	3
Ashrafieh	30	Merdacheh	1	Dbayeh	8	El Aamroussieh	4	Dlehta	1	Zghorta	36
Adlieh	1	Loueizy	1	Mazraet Deir Aoukar	1	Hay Al Sillom	23	Batha	1	Zghorta	10
Others	18	Mansourieh	1	Mansourieh	13	Khaldeh	7	Kfour	1	Kfardlaqos	2
Baalbek	186	Kfarshima	4	Deishounieh	1	Choueifat El Oumara	31	Bzoummar	1	Kfarhata	1
Baalbek	52	Wady Shahrou Al Olya	1	Fanar	7	Aramoun	7	Dar'oun	1	Harf Ardeh	2
Sharawneh	1	Bsaba	1	Ein Saadeh	6	Bchamoun	7	Feitroun	1	Majdlaya	2
Ein Bourday	1	Abadieh	2	Roumieh	2	Bleibel	1	Raachine	1	Alma	5
Doures	17	Dhour AL Abadieh	1	Majzoub	1	Bdadoun	1	Bqaatouta	1	Aqbeh	6
laat	1	Chouit	2	Bsalim	1	Bsous	1	Ein Al Delbeh	1	Kfar Zeina	1
Hoch Tal Safieh	1	Qseibeh	1	Nabay	1	Aley	5	Faraya	1	Arjes	2
Nahleh	6	Kneisseh	1	Mtayleb	2	Kahhaleh	2	Others	1	Ehden	1
Majdaloun	2	Hammana	9	Rabieh	1	Qmatieh	1	Beharre	1	Meryata	2
Saedy	1	Chbanieh	2	Rabweh	1	Ein Al Rimmaneh	2	Abdine	1	Others	2
Hadath Baalbek	1	Falougha	2	Beit Al Chaar	4	Majdlaya	2	Menyeh Dunniyyeh	11	Batroun	12
Kakha	1	Qornayel	1	Deek El Mahdy	1	Ainab	1	Borj El Yahoudieh	1	Batroun	4
Haret Al Shamalieh	1	Jouar El Hoz	1	Ein Aar	1	Abayh	1	Nabi Youchaa	1	Kfar Abida	2
Jabbouleh	1	Others	10	Mazraet Yashouh	2	Bhamdoun Al Dayaa	1	Menyeh	5	Shekka	4
Naby Othman	2	Byblos	24	Zikrit	1	Chanay	2	Bqarsouna	1	Jrane El Batroun	1
Arsal	18	Byblos	4	Bekfaya	2	Majdelbaana	1	Sfireh	2	Ras Nhash	1
Laboueh	1	Mastita	1	Beit Chabab	3	Soufar	2	Azqui	1	Akkar	37
Toufiqieh	1	Blat	3	Ein Alaq	2	Rweisat Soufar	1	Zahle	119	Halba	4
Nabha Al Damdoun	1	Eddeh	2	Qornet El Hamra	1	Others	3	Hoch Al Zaraanah	1	Menyara	1
Nabha El Mehbara	1	Amchit	2	Broummana	2	Western Beqaa	22	Rassieh	2	Borj El Arab	1
Shaeth	2	Halat	2	Baabdat	1	Machghara	2	Maallaqa	5	Kfar Harra	2
Younine	1	Fidar	1	Beit Mery	1	Ein Zebdeh	1	Karak Nough	5	Chagdouf	1
Bednayel	1	Hosrayel	1	Bolonia	1	Khirbet Qanafar	3	Maallaqa Aradi	1	Old Akkar	2
Qasr Nabba	1	Nahr Ibrahim	2	Aintoura	4	Aana	1	Hoch El Oumara	6	Hochab	1
Temnine El Fawka	2	Kafr	1	Bteghrine	2	Meidoun	1	Aradi	1	Tal Maayane	1
Hoch Al Rafqa	2	Hboub	1	Mar Moussa El Douar	1	Lala	1	Tal Chihi	1	Abbouidieh	1
Temnine Al Tahta	3	Hsarat	1	Others	5	Kamed El Loz	3	Mar Elias	2	Nahr El Bared	1
Shmestar	5	Sourat	1	Hermel	6	Ghazzeh	3	Forzol	5	Abdeh	2
Hoch Al Naby	1	Bekhaaz	1	Hermel	4	Qar'oun	4	Ablah	2	Houeich	1
Hoch Sneid	3	Others	1	Others	2	Al Marej	3	Niha	2	Qobayat	1
Taraya	7	Tyre	37	Rashaya	5	Nabatieh	29	Ksara	7	Hrar	1
Ser'een Al Tahta	1	Tyre	8	Rashaya Al Wady	2	Mazraat Kfar joz	4	Chtoura	1	Meshmesh	1
Ser'een Al Fawqa	3	Rashidieh	4	Dahr El Ahmar	1	Kfar Rimmane	3	Makseh	1	Wady Al Jamous	1
Hizzine	1	Borj Al Shemaly	7	Bireh	1	Habbouch	3	Taalabaya	3	Sindianet El Majdel	1
Khodr	3	Batoulieh	2	Others	1	Kfour	1	Jdita	3	Machta Hammoud	1
Sifri	1	Deir Qanoun El Ain	1	Saïda	55	Arab Salim	1	Taanayel	1	Aidamoun	1
Naby Sheeth	5	Smaiyeh	2	Old Saïda	20	Zefta	1	Qab Elias	2	Wady Khaled	1
Hor Taala	3	Wady Jilo	1	Hlalieh	3	Deir Al Zahrani	1	Mreijat	1	Akroum	2
Brital	6	Deir Ames	1	Haret Saïda	3	Harouf	1	Bar elias	5	Others	9
Khreibeh	3	Bazourieh	2	Miyeh w Miyeh	1	Douair	1	Anjar	2	Hasbaya	3
Mazraat Beit Mchaik	2	Arzoun	1	Abra	3	Qsaibeh	1	Waqf - Anjar	1	Hasbaya	2
Bouday	6	Rmadieh	1	Qrayyeh	1	Arnoun	1	Majdel Anjar	26	Others	1
Others	14	Teir Falasayh	1	Bqosta	1	Kfar Sir	2	Riyag	9		
Marjeyoun	13	Bedias	1	Ein Al Delb	1	Sir El Gharbieh	1	Ali Al Nahry	8		
Blat	1	Chabriha	1	Ghazieh	2	Others	8	Hoch Al Ghanam	1		
Qleï'aa	5	Borj Rahhal	1	Maghdoucheh	1	Bint Jbeil	10	Kfar Zabab	6	Others	160
Khiyam	1	Chamaa	1	Khreibeh	3	Bint Jbeil	2	Faour	1		
Kfarkila	1	Bayada	1	Mazraet Kouthariet	1	Rmeish	2	Others	8		
Taybeh	1	Others	1	Zrariah	1	Safad El Battikh	1				
Qabriha	2	Jezzine	9	Adloun	1	Qalawayh	1				
Qantara	1	T'eïd	3	Sarafand	2	Borj Qalawayh	2				
Majdel Selm	1	Mrah El Habass	1	Bisarieh	2	Beit Lif	2				
		Baisour	2	Saksakiyeh	3						
		Lebaa	1	Marwanieh	2						
		Others	2	Addousieh	1						
				Mazraat El Mseileh	1						
				Others	2						

All reports and related decisions can be found at: <http://drm.pvm.gov.lb>

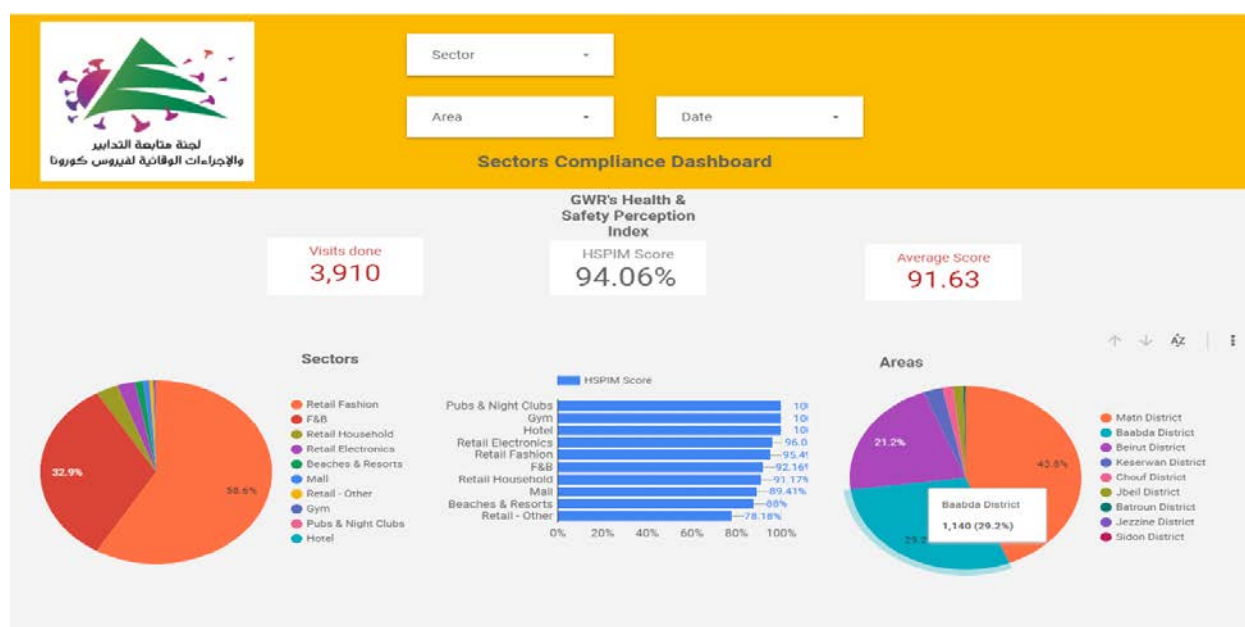
Or social media @DRM_Lebanon

The Online platform to measure the level of risk of the spread of the new Corona virus



This interactive platform allows you to know the level of risk of spreading the COVID-19 according to districts, based on the number of cases registered daily and the number of residents in each district. For more information daily, you can access the following link: <https://bit.ly/DRM-RiskLevelInMunicipalities>

Level of commitment by sectors



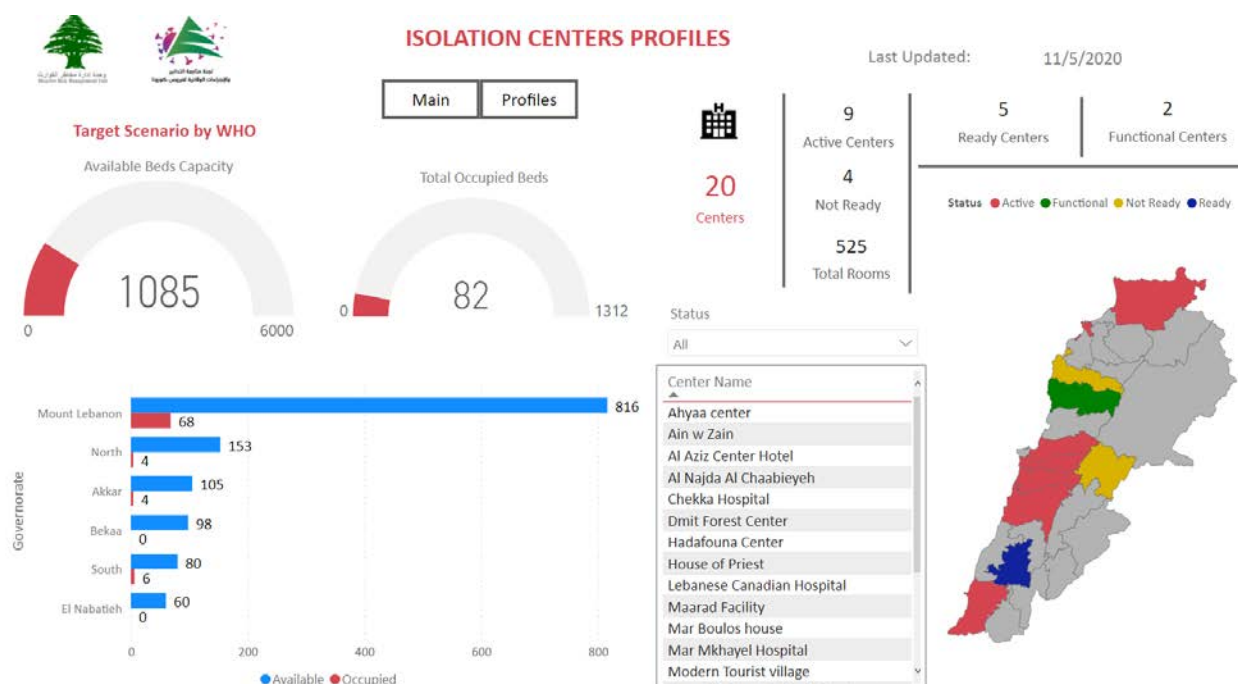
Based on the recommendation issued by the National Committee for Follow-up of Preventive Measures and Measures to Confront the Coronavirus to open all sectors, provided that the general mobilization procedure (safe distance, muzzle, and hand sterilization) be applied, a special electronic platform was created that allows monitoring and measuring the percentage of commitment by various sectors on an ongoing basis.

The detailed results can be viewed directly at the following link: <http://bit.ly/covidsectordata>

All reports and related decisions can be found at: <http://drm.pvm.gov.lb>

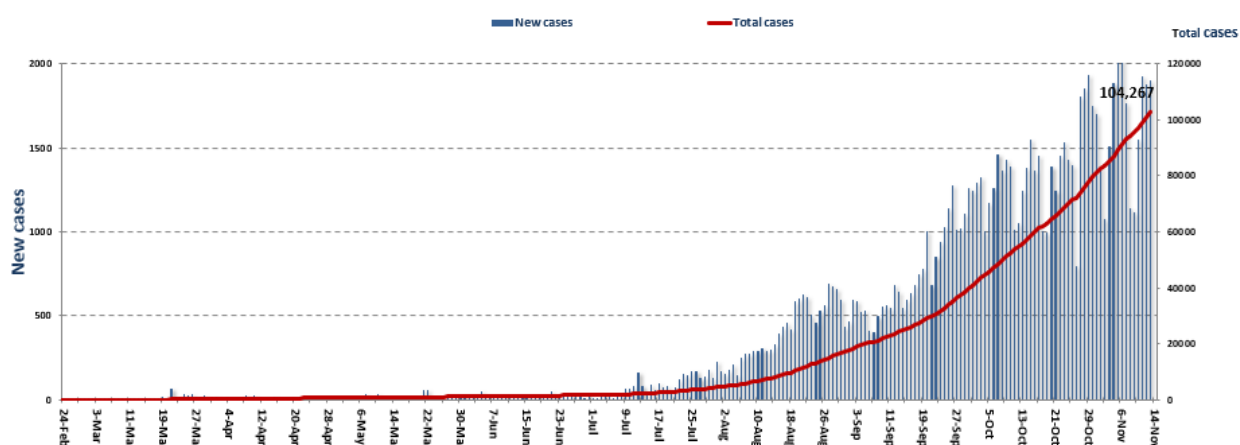
Or social media @DRM_Lebanon

Occupancy rate of isolation centers for cases infected with Coronavirus



For more information about the isolation centers' distribution and the percentage of their occupancy, enter the following link: <http://bit.ly/DRM-IsolationCentersProfiles>

Cumulative cases per day

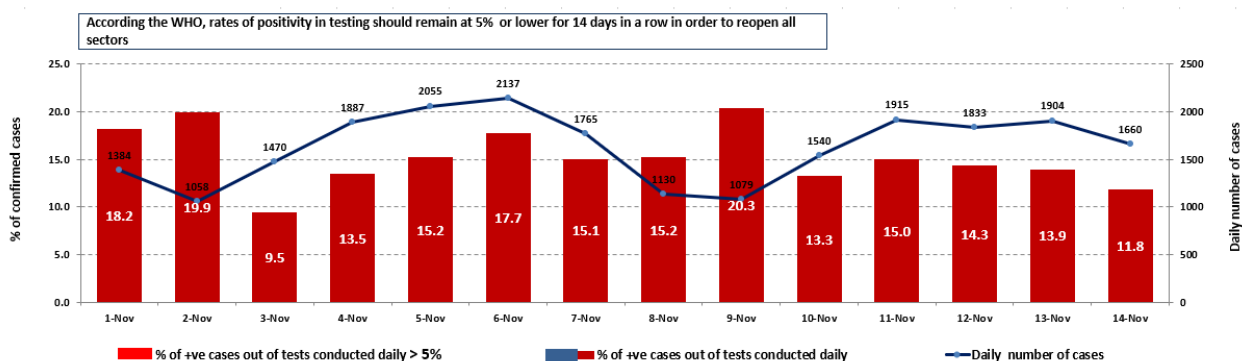


Ref: MoPH data

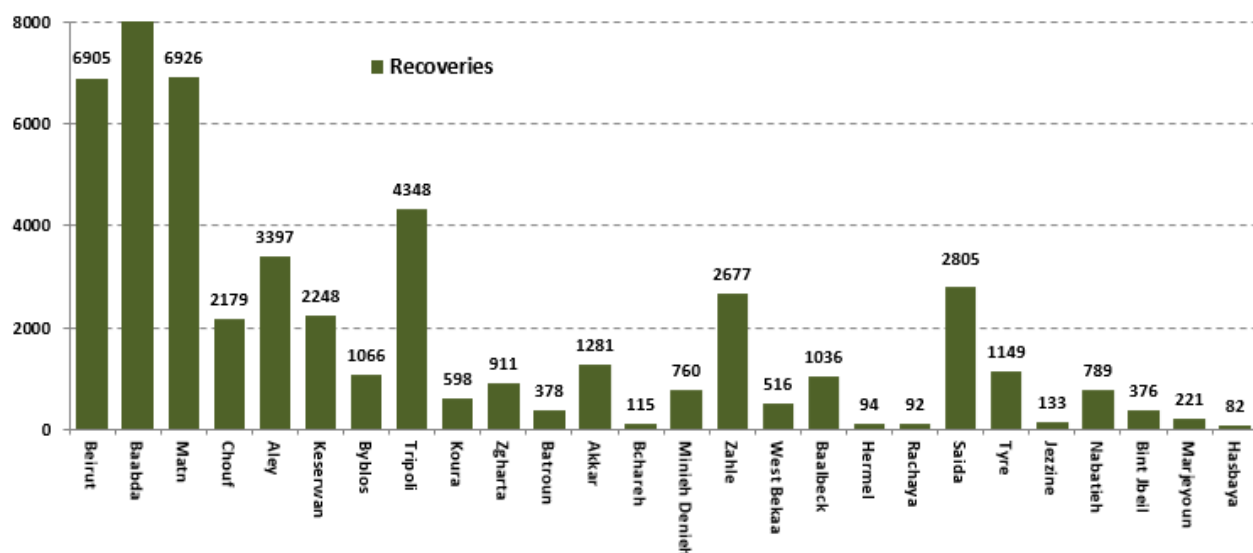
All reports and related decisions can be found at: <http://drm.pvm.gov.lb>

Or social media @DRM_Lebanon

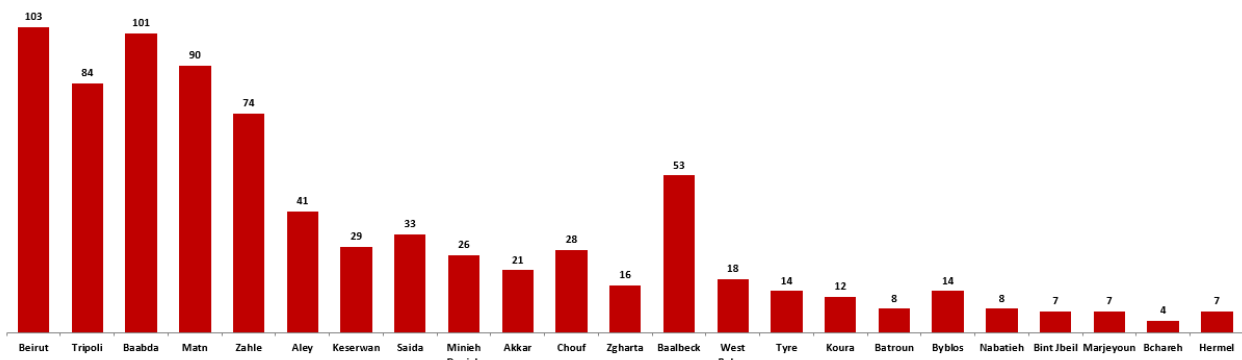
The percentage of positive cases out of the number of daily checks (01 Nov – 14 Nov2020)



Distribution of Recoveries per Casa



Distribution of deaths by Governorates

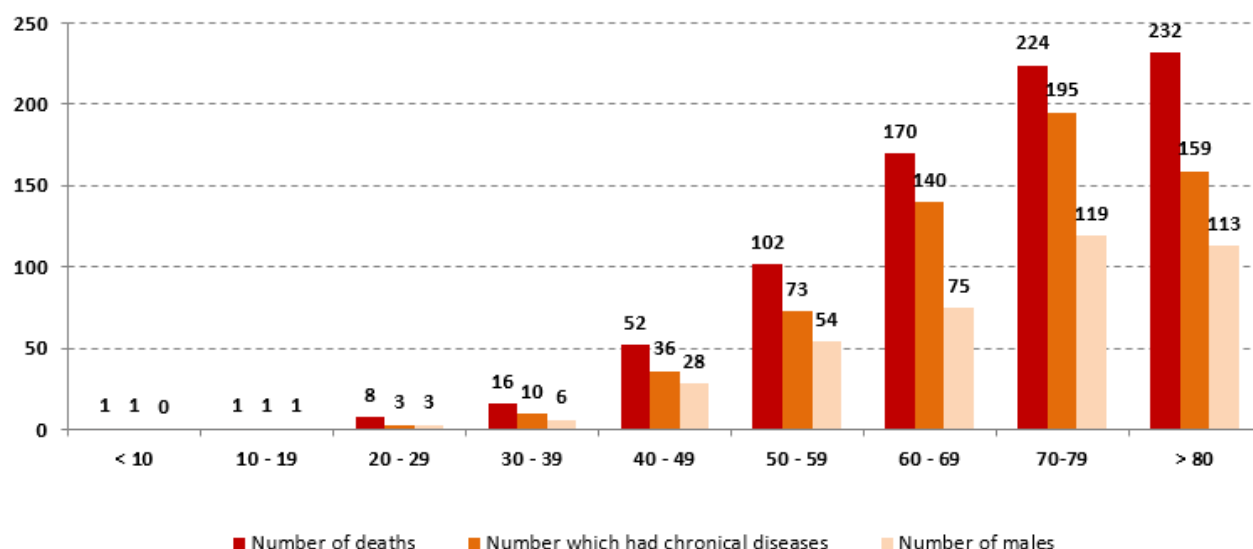


Ref: MoPH data

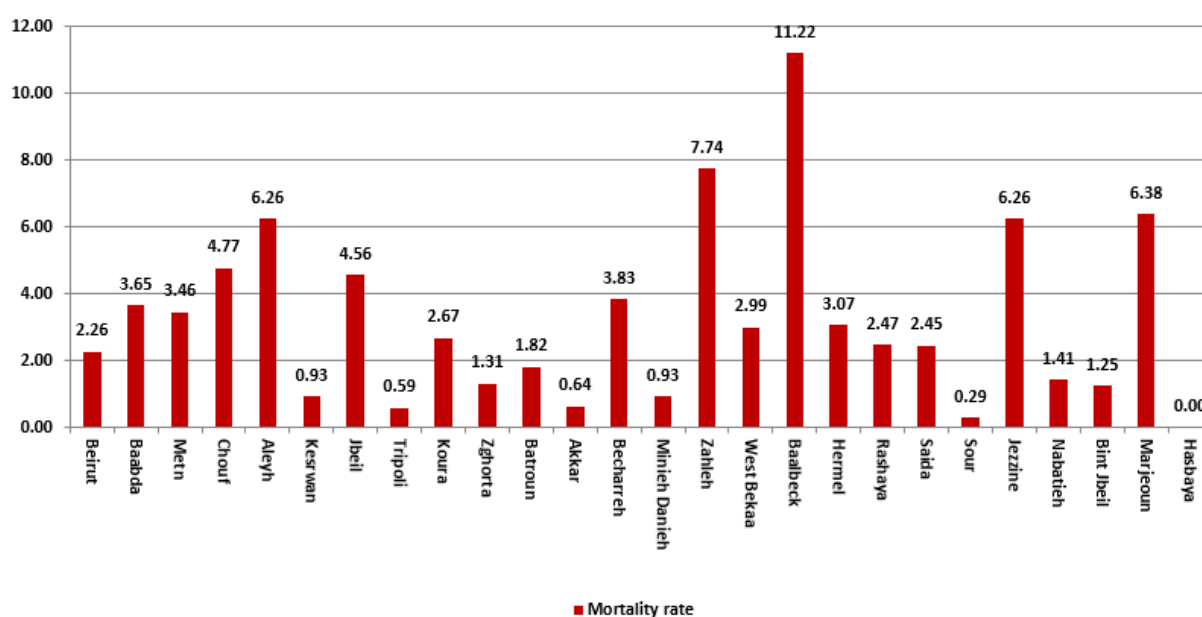
All reports and related decisions can be found at: <http://drm.pvm.gov.lb>

Or social media @DRM_Lebanon

Distribution of deaths by Age



Distribution of mortality rate for the last 14 days



Distribution of the recorded deaths during the past 24 hours

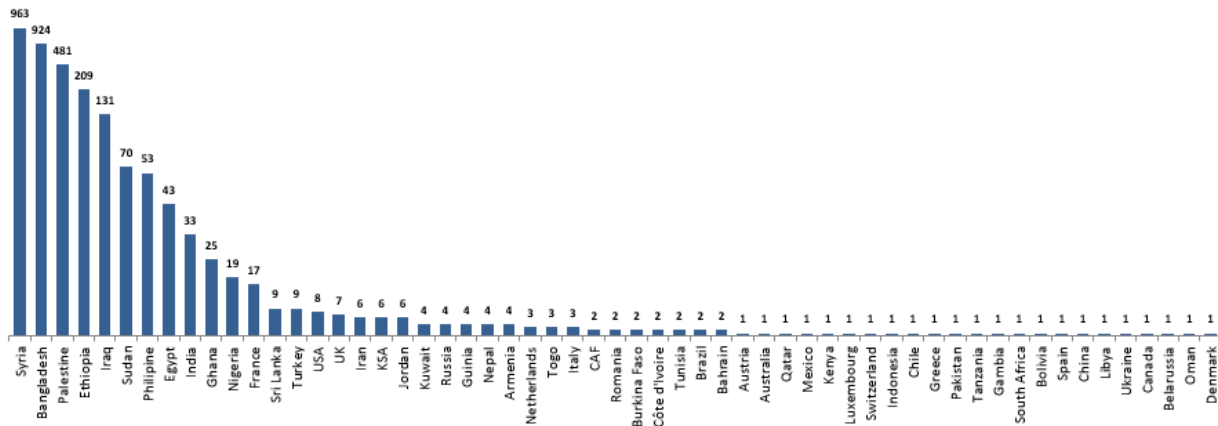
Hospital	Residence	Gender	Age	Chronic
Riyyak Hospital	Baalbek	Female	34	Yes
Maritime Hospital	Baalbek	Female	61	Yes
Middle East Hospital	Matn	Male	90	Yes
Maritime Hospital	Jbeil	Male	79	Yes
Home	Baalbek	Male	51	No
Makassed Hospital	Beirut	Male	74	Yes
Riyyak Hospital	Matn	Male	86	Yes
Koura Hospital	Zgharta	Female	73	Yes
Saint George – Hadath	Baabda	Female	60	No
Saint George – Hadath	Baabda	Male	56	No

All reports and related decisions can be found at: <http://drm.pvm.gov.lb>

Or social media @DRM_Lebanon

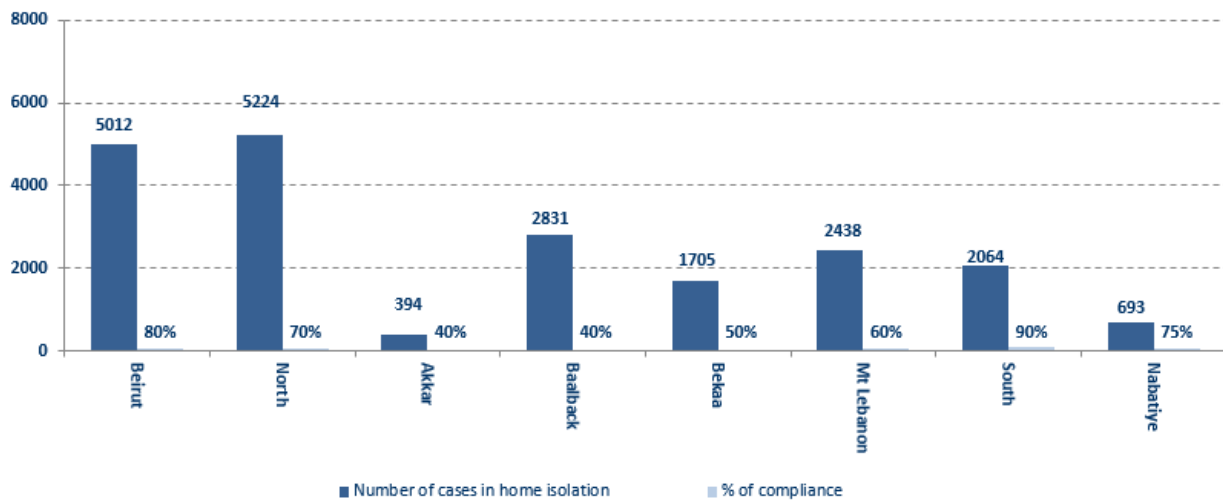
Distribution of cases by nationality

Lebanese : 97,798 cases out of 104,267 (93%)

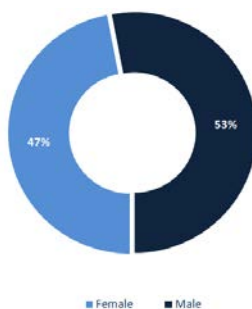


Ref: MoPH data

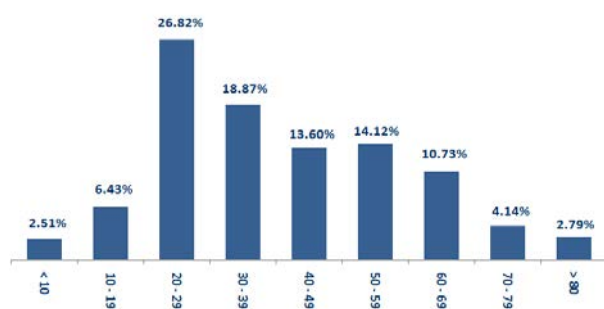
Number of individuals in home isolation and percentage of commitment to isolation



Distribution of cases by gender



Distribution of cases by age



Ref: MoPH data

All reports and related decisions can be found at: <http://drm.pvm.gov.lb>

Or social media @DRM_Lebanon

Decisions and actions taken – 11/14/2020

Ministry of Public Health

- The Ministry of Public Health opened new departments for Corona patients at Baalbek Governmental Hospital.
- The Ministry of Public Health reported that the results of the PCR tests were completed for flights that arrived in Beirut and were conducted at the airport on 11/11/2020 and 12/11/2020, and the results showed the existence of eighteen (18) positive cases distributed as follows:

Date	Company	Country	Flight Number	Number of Cases
11/11/2020	Ethiopian Airways	Adis Abab	406	1
	MEA	Istanbul	828	2
	Turkish Airlines	Adana	6700	2
	Pegasus	Cairo	711	1
	Egypt Airways	Baghdad	323	2
	MEA	Istanbul	268	1
	Turkish Airlines	Istanbul	826	3
	MEA	Cairo	307	1
	Pegasus	Istanbul	863	2
	Air France	Paris	566	1
11/12/2020	Turkish Airlines	Istanbul	828	1
	Iraqi Airways	Baghdad	131	1
Total				18

Lebanese Red Cross

Cases transferred to the hospital	8,165 (77 New)	Ambulance centers	48	Number of additional ambulance centers ready to respond	54,856 (25 New)	Number of PCR tests transferred to laboratories	239,571
Number of being benefitting from awareness sessions	105,192 (756 New)	total number of respondents	8,870 (12 New)	Number of trained paramedics	1,498	Number of volunteers trained to transfer PCR tests	166
Number of trained managers for isolation centers	8,784 (11 New)	total LRC volunteers for covid 19	550	Number of university volunteers trained to conduct awareness sessions	291	The number of university volunteers trained to follow up on prevention measures in companies and institutions	967
Number of prisons that has been disinfected	840 (9 New)	Total distributed posters, brochures, and flyers on covid19 prevention	1,255,962	Number of distributed equipment	261,865	Number of beneficiaries from educational electronic platforms COVID-19	4,685 (5 New)

General Directorate of Internal Security Forces

- 1,072 minutes of multiple violations of the Ministry of Interior and Municipalities Resolution No. 1432 were written up to 1:00 pm on the first day of its implementation.
- Writing seizure records against violators of the decisions of public mobilization:

All reports and related decisions can be found at: <http://drm.pvm.gov.lb>

Or social media @DRM_Lebanon

The number of seizure records during the past 24 hours					The total number of records since 03/08/2020	
Written records of cars that violate a Even / Odd decision				1677		
Written records of violating institutions (absorptive capacity and preventive measures)				83		
Written records of people violating the general mobilization decision (Aragil* and social distancing)				58	Beirut	24,234
Written records of persons violating the decision to wear a mask				366	Mount Leb	25,706
Total				2,184	Bekaa	9,975
					North	8,295
Beirut	Mount Leb	Bekaa	North	South	South	9,195
657	685	410	236	196	Total	77,405

General Directorate of State Security

- Report on the conduct of patrols in Beirut, Mount Lebanon, Bekaa, South, Baalbek-Hermel, Nabatiyeh and Akkar directorates in order to monitor the implementation of the general mobilization decision
- Reporting the instruction to establishments and commercial stores that are not excluded from the decision regarding the necessity of closing and a commitment to apply it in the Bekaa District
- Reporting the closure of violating shops within the scope of Akkar District, and asking citizens to abide by homes and take preventive measures
- Reporting the percentage of compliance with the general mobilization decision in the governorates, which came as follows within the past 24 hours:

Beirut	South	North	Akkar	Bekaa	Nabatiyeh	Baalbek Hermel	Mount Leb
90%	95%	77%	75%	95%	91%	75%	88%

General Directorate of General Security

- The statement of the closure of a school that did not comply with the general mobilization decision in the town of Assoun - Minieh-Denniyeh district
- Report on the percentage of commitment to implement General Mobilization Resolution No. 1432:

Commitment ratio	South & Nabateih	North & Akkar	Bekaa & Baalbek Hermel	Mount Lebanon
Lock-Down	91%	78%	75%	91%
Even & Odd	52%	56%	48%	52%

Ministry of Public Works and Transportation

Beirut Raffic Harriri International Airport:

Departing Flights		Arriving Flights	
Number of Flights	43	Number of Flights	40
Number of Departing Individuals	4,375	Number of Arrivals	3,466

Ports:

Port	Left			Entered		
	Export	Direction	#	Import	Direction	#
Beirut				Containers	Iskenderun	1
				Blank	Iskenderun	1
				Containers	Port Said	1
Tripoli	Containers	Tassuko	1			
Jouneih	Fuel Oil	Jeyyeh	1			
Total	2			3		

All reports and related decisions can be found at: <http://drm.pvm.gov.lb>

Or social media @DRM_Lebanon

General Decisions / Announcements

The Ministry of Interior and Municipalities issued Decision No. 1432 on 11/12/2020 related to the implementation of the Supreme Defense Council's decision to close to confront the rise in Corona injuries, from 11/14/2020 to 11/30/2020. The main highlights of the decision:

- Preventing going out and entering the streets and roads every day from five in the evening until five in the morning of the next day.
- The movement of tourist vehicles (private) is restricted, except for public cars, rented cars, motorcycles, trucks and tanks of all kinds, as follows:
 - Monday, Wednesday and Friday: Cars with Odd license plates.
 - Tuesday, Thursday, Saturday: Cars with Even license plates.
 - Sunday: It is prohibited to walk around all types of cars, including rental cars, trucks and motorcycles
- Determining the number of passengers permitted in public and private transport mechanisms, with mandatory wearing of the muzzle, as follows:
 - Public cars: 4 people, with a driver.
 - Private cars: 4 people maximum with the driver for family necessities.
 - Shared transport mechanisms: half the number at the maximum.
 - Cargo transport trucks: the driver is with one person, provided that the porters are transported with separate vehicles according to the above conditions.
 - Motorcycles (except Sidon): one person on a bike, and motorbike marches are prohibited.
- Determining the opening times of the economic and commercial sectors in all Lebanese regions that are excluded from the closure decision according to the decision issued by the Supreme Council of Defense: health sector institutions, ministries and public administrations, health and food sectors, Lebanon Electricity Corporation, Lebanon water institutions, Ogero and cellular companies, oil installations Governmental and private sector, the central bank and its branches, social security and state employees' cooperative in all its branches, administration of tobacco and tobacco inventory, approved distributors, factories, Media institutions, municipal centers, Rafic Hariri International Airport, sea ports, hotels and furnished apartments, private financial and commercial institutions such as banks and money transfer companies, express mail, gas stations, gas filling and distribution companies, money transportation companies, United Nations organizations, travel visa application centers approved by Foreign embassies, construction workshops (internal work exclusively), libraries.
- Workshops for the restoration and reconstruction of apartments and buildings damaged by the explosion of the Beirut port and located in the vicinity of Beirut and Bourj Hammoud are exempt from the provisions of this decision and are permitted to work in accordance with the provisions of Article 1 specified in the decision
- The employees of the General Directorate of the Presidency of the Republic, the General Secretariat of Parliament, the Presidency of the Council of Ministers, the Ministry of National Defense, the Ministry of Interior and Municipalities, the military and health sector employees, workers in the diplomatic corps, the media personnel, are exempted from the provisions of the first and second articles of the decision. The port, employees of service providers in the EDL and water establishments, mill workers and sweeping and waste collection companies, Military vehicles, civil defense mechanisms, municipal police, the Lebanese Red Cross, ambulances and the medical apparatus, mechanisms of the diplomatic corps, the United Nations, the media and the media, cranes, transport and towing vehicles, vehicles for people with special needs, arrivals and departures and those who take them to and from the airport, provided they have a photo About the ticket
- Adopting job cards to prove the identity of the excluded persons during their transportation to and from their work centers.
- Bars, cafes, night discos, sports clubs, stadiums, indoor and outdoor swimming pools remain closed, and all public and private parties, all sporting activities, all social events and gatherings of all kinds, the sea corniche, public parks, major shopping centers, the Casino of Lebanon, video halls and electronic games are stopped. Popular markets, in coordination with the religious authorities to close places of worship and cancel religious events.

- Assigning governors to:
 - Take the necessary measures to implement the content of this decision and instruct the district administrators to follow up with the municipalities to strictly monitor and prevent violations.
 - Assigning the district attorneys with the judiciary doctors to follow up the quarantined conditions in coordination with the mayors.
 - Take the decision to close secondary roads in villages and towns within their geographical area after the approval of the security forces.
- Assigning the General Directorate of Internal Security Forces to instruct all units to strictly enforce this decision and suppress violations, especially with regard to wearing the muzzle and to organize arrest records against violators in accordance with the legal principles and regulations in force.
- Note: The full decision can be found at: <http://drm.pcm.gov.lb>

Examples of lack of adherence to safety measures

- Violations of the Ministry of Interior Decision No. 1432: promenade on the sea corniche, violations of authorized and single motor vehicle traffic, and violations of commercial establishments and stores that did not adhere to the decision.
- Failure to comply with the preventive measures and procedures required in a number of stores and markets (putting on a mask or face mask, sterilizing hands, maintaining a safe distance).
- Failure of those in contact with confirmed cases to adhere to home isolation procedures until the results of the laboratory tests are issued.

If you feel any symptoms, directly call the hotline of the Ministry of Public Health: 1214 or 01/594459

Laboratories that did not comply with the procedures approved by the MoPH About the information required to be recorded for infected cases within the past 24 hours

Laboratories that did not specify the Governorate	
Laboratory/Hospitals	Cases
BDL003-Laboratoire Inovie / Fayyadie	71
BDH505-Rafic Hariri University hospital	30
BDL002-Hadi Laboratory/ Haret Hreik	13
BRH639-Hospital Saint Georges Orthodoxe / Achrafieh	13
BDL006 - Beirut International Airport	10
BRH636-Hospital LAU Medical Center / Rizk	5
TRL001-Lebanese University Faculty of Public Health	3
ZHH231-Hospital Tel Chiha / Zahleh	3
BRH610-Hospital American university	2
BRL010 - Jabra Ghorra Laboratory	1

Number of positive cases without specifying the place of residence	
Laboratory/Hospitals	Cases
BDL003-Laboratoire Inovie / Fayyadie	71
BDH505-Rafic Hariri University hospital	32
BDL002-Hadi Laboratory/ Haret Hreik	15
BRH639-Hospital Saint Georges Orthodoxe / Achrafieh	13
BDL006 - Beirut International Airport	10
BDH562-Hospital Mont liban	5
BRH610-Hospital American university	5
BRH636-Hospital LAU Medical Center / Rizk	5
TRL001-Lebanese University Faculty of Public Health	3
ZHH231-Hospital Tel Chiha / Zahleh	3

All reports and related decisions can be found at: <http://drm.pvm.gov.lb>

Or social media @DRM_Lebanon

SDH418-Hospital Hammoud / Saida	2
SRL001 - Mashrek Medical Diagnostic Center MDC	2
AKH108-Hospital Halba Gouvernemental	1
BRL007 - Doctors Center	1
BRL010 - Jabra Ghorra Laboratory	1
JBL001-Laboratoire Akiki et Boulos	1

Number of positive cases without a phone number	
Laboratory/Hospitals	Cases
BDL002-Hadi Laboratory/ Haret Hreik	3
BRL011 - Saint Marc Medical & Diagnostic	1

A list of the laboratories accredited by the MoPH to conduct PCR tests

Governmental Labs

المختبر	الموقع
RHUH	مستشفى رفيق الحريري الجامعي بيروت
Halba Governmental	مستشفى حلبا الحكومي حلبا
Tripoli Governmental	مستشفى طرابلس الحكومي طرابلس
Batroun Governmental	مستشفى البترون الحكومي البترون
Fetouh Keserwan	مستشفى فتوح كسروان الحكومي (البوار) كسروان
Nabih Berri Hosp	مستشفى نبيه بري الحكومي الجامعي النبطية
Tebnine Governmental	مستشفى تبنين الحكومي تبنين
Bint Jbeil Governmental	مستشفى بنت جبيل الحكومي بنت جبيل
Baalback Governmental	مستشفى بعلبك الحكومي بعلبك
Elias Herrawi Governmental	مستشفى الرئيس الياس الهراوي الحكومي زحلة

Private Labs

المختبر	الموقع
AUBMC	مستشفى الجامعة الأميركية بيروت
Hôtel Dieu de France	مستشفى أوتيل ديو الجامعي بيروت
Laboratoires Rodolphe Mérieux (Université Saint-Joseph)	مختبرات رودولف ميريو (الجامعة اليسوعية – المتحف) بيروت
George-Saint UMC Hospital	مستشفى القديس جاورجيوس الجامعي بيروت
General Makassed Hospital	مستشفى المقاصد بيروت
LAU Medical Center - Rizk Hospital	مستشفى رزق الجامعي بيروت
CHU - Geitawi Libanais Hospital	مستشفى اللبناني الجعيتاوي الجامعي بيروت
Hôpital Notre-Dame du Rosaire	مستشفى الوردية بيروت
Doctors' Center	مختبر مركز الأطباء بيروت
Fontana Laboratories	مختبر فونتانا (الحمرا) بيروت
General Security Laboratories	مختبر الأمن العام (العدلية) بيروت
Ghorra-Jabre Laboratories	مختبرات جبر و غرة الأشرفية
Saint Marc Medical & Diagnostic Center	مختبر السانمارك الأشرفية
Laboratories HML	مختبرات حداد فرن الشباك
Laboratoire Moderne (Modern Lab.- Berjaoui)	المختبرات الحديثة الغبيري
Sahel General Hospital (SGH)	مستشفى الساحل الغبيري
Al Zahraa Hospital	مستشفى الزهراء الجامعي الغبيري
	مركز النقاء الطبي بنر حسن
Al Rassoul Al Aazam Hospital	مستشفى الرسول الأعظم برج الراجنة
Bahman Hospital	مستشفى بهمن حارة حريك
National Diagnostic Services Company (NDSC)	مختبر ناشيونال دياغنوستك سيرفس كومباني حارة حريك

All reports and related decisions can be found at: <http://drm.pvm.gov.lb>

Or social media @DRM_Lebanon

Center Diagnostic Medical	مختبر الدكتور محمود عثمان - مركز التحاليل الطبية	المريجة
ADC (Center Diagnostic American)	مختبر أميريك دياغنوستك سنتر	الجناح
Mount Lebanon Hospital	مستشفى جبل لبنان	بعيدا
Hadath – George-Saint Hôpital	مستشفى السان جورج الحدث	بعيدا
Laboratory Al Hadi	مختبر الهادي	بعيدا
INOVIE	مختبر-Liban	بعيدا
Sacré - Coeur Hôpital	مستشفى قلب يسوع	الحازمية
Clinigene	مختبر كلينيجان	الحازمية
Dr. Samir Serhal Hospital	مستشفى سرحال	المتن
Life for Trans medical	مختبر ترانسميدكال فور ليف	المتن
	مختبرات سان ميشال للتحاليل الطبية	المتن
	مختبر مركز الشرق الأوسط الصحي ش.م.ل	المتن
Haroun Hospital	مستشفى هارون	الزلقا
Bellevue Medical Center (BMC)	مستشفى بلفو	المنصورية
Haykal Albert Hôpital	مستشفى هيكل	الكورة
Centre Hospitalier du Nord (CHN)	مركز الشمال الاستشفائي	زغرتا
Mazloum Hospital	مستشفى المظلوم	طرابلس
Al Mounla Hospital	مستشفى المنلا	طرابلس
Nini Hospital	مستشفى النيني	طرابلس
LMSE	مختبر ميكروبيولوجيا الصحة والبيئة، المعهد العالي للدكتوراه، الجامعة اللبنانية	طرابلس
Secours des Dame-Notre – CHU	مستشفى سيدة المعونات الجامعي	جبيل
Boulos & Akiki Lab	مختبر عقيلي وبولس	جبيل
Wakim Centre Médical	مختبر واكيم	جونية
Hospital Wzein Ain	مستشفى عين وزين	الشوف
UMC Hospital Hammoud	مستشفى حمود الجامعي	صيدا
Al Karim Medical Laboratory (KML)	مختبر الكريم	صيدا
Hospital Harb Ragheb Sheikh	مستشفى الشيخ راغب حرب	النبطية
SDC (Center Diagnostic Sabbah)	مختبر الصباح	النبطية
Jabal Amel Hospital	مستشفى جبل عامل	صور
Mashrek Diagnostic Center (MDC)	مختبر المشرق	صور
Hospital University Dar Al Amal	مستشفى دار الأمل الجامعي	بعلبك
	مختبرات العناية الطبية	بعلبك
	مختبرات العناية الطبية	اللبنوة
Hospital General Khoury	مستشفى خوري	زحلة
MCC (Center Care Medical)	مختبر ميدكال كير سنتر	زحلة

مختبرات المستشفيات العسكرية

Hôpital Central Militaire	المستشفى العسكري المركزي في بيروت	بيروت
---------------------------	-----------------------------------	-------

المختبرات المؤهلة لأخذ عينات "المسحات الأنفية" بطريقة Drive-Thru

Medical Diagnostic Treatment Center (MDTC)	مختبر ميدكال دياغنوستك تريتماننت سنتر (الحمراء)	بيروت
ALS CIC SAL Med-Lab	مختبر ميد لاب الحمراء – الجفینور	بيروت
Itani Medical Laboratories	مختبرات عيتاني	بيروت
ABC Laboratories	مختبر أ ب سي	الأشرفية
Mouawad Medical Laboratory	مختبرات معوض الطبية	الشياح
Rihan Medical Center	مختبرات الشياح (د. فؤاد ریحان)	الشياح
Lab Expert	مختبر إكسبرت لاب	المنصورية
LAB Life	مختبر لايف لاب	بعلبك
Rayyak Hospital	مستشفى رياق	رياق