



Lebanon National Operations Room Daily Report on COVID-19



Tuesday, October 13, 2020

Report #209

Time Published: 10:30 PM

New in the report:

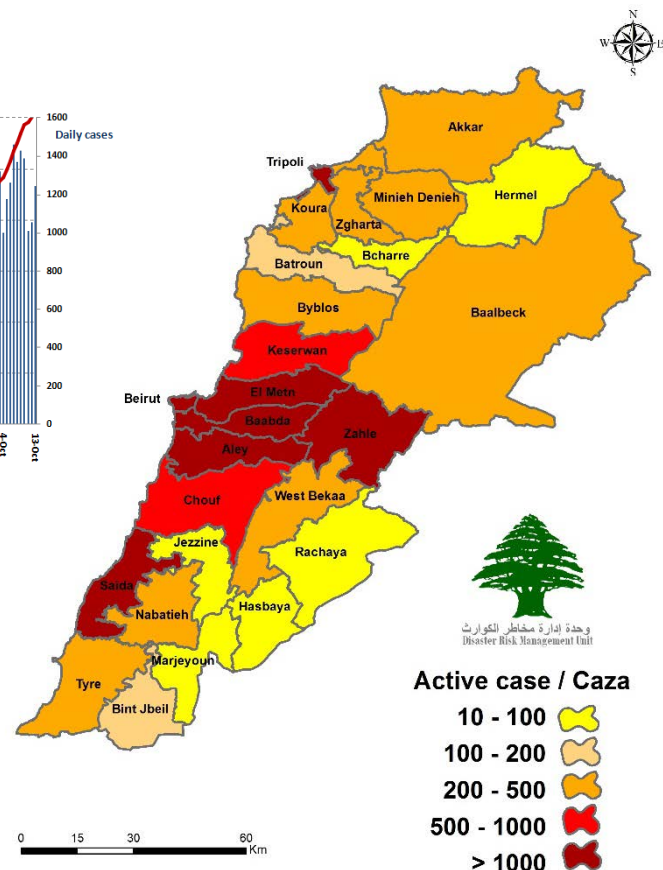
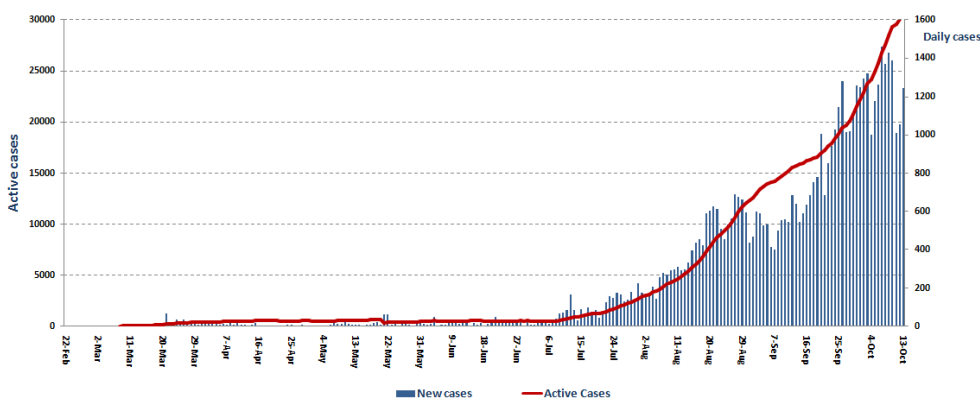
- Decision issued by the Ministry of Interior and Towns No. 1252 on 10/13/2020 regarding amending the schedule of villages and towns that have been closed due to the high number of Coronavirus Cases.

1,245 New Cases		55,869 Total Cases since 21.2.2020		479 Total Deaths		24,581 Total Recovered	
1,046 Residents	10 Expats	54,098 Residents	1,776 Expats	13 New Deaths		640 New Recovered	
1,219 Total Cases in the Health Sector		30,809 Total Active Cases		615 Hospitalized Cases		190 Total Cases in ICU	
21 New Cases in the Health Sector		30,194 Cases in Home Isolation		425 Mild Cases		5 New Cases in ICU	
946,185 COVID-19 Tests since 21.2.2020		Lebanon Status compared to the World					
1,261 COVID-19 Tests at Airport within 24 hrs.		12,463 COVID-19 tests for residents within 24 hrs.		Total Cumulative		55,869	
				Total Deaths		479	
				Deaths percentage		0,85%	
				Total recoveries		24,581	
						38,240,368	
						1,088,172	
						2,84%	
						28,737,163	

Ref: Ministry of Public Health Data

Number of Cases by Location

- 9,788 case is Under investigation



Active case / Caza

- 10 - 100
- 100 - 200
- 200 - 500
- 500 - 1000
- > 1000

Beirut	99
Ein Al Mreisseh	1
Ras Beirut	1
Manara	1
Raouche	2
Hamra	7
Mseitbeh	4
Mar Elias	3
Tallet Al Khayyat	3
Sanayeh	1
Zarif	1
Mazraa	6
Borj Abi Haidar	8
Basta Fawka	3
Malaab Al Baladi	1
Tariq Jdeedeh	21
Ras Al Nabaa	4
Basta Tahta	2
Ashrafieh	11
Others	19
Baabda	239
Chiah	20
Jnah	2
Ouzai	4
Bir Hassan	5
Cite Sportif	1
Ghobeiry	15
Ein Al Remmaneh	15
Forn Al Shubbak	2
Haret Hreik	40
Lailaki	10
Borj Al Barajneh	17
Mreijeh	14
Tahweetet Ghadir	7
Baabda	6
Hazmieh	5
Fayadieh	2
Hadat	37
Kfarshima	9
Bsaba	3
Dhour Al Abadieh	3
Chouit	1
Arayya	1
Hammana	1
Jwar Al Joz	1
Others	18
Bint Jbeil	12
Bint Jbeil	3
Ein Ebel	1
Bar'aashit	1
Harees	4
Debel	1
Beit Leef	1
Others	1
Marjeyoun	2
Qlei'aa	1
Kfar kila	1

Kesrwen	42
Sarba	1
Kaslik	1
Zouk Michael	4
Ghadir	3
Zouk Mosbeh	6
Adonis	3
Haret Sakher	2
sahel Alma	2
Bouar	1
Okaybeh	1
Ajaltoun	1
Ballouneh	4
Jeita	1
Ghazir	2
Kfarhbab	1
Maarab	1
Dar'oun	1
M'ayssra	1
Reifoun	3
Hrajel	2
Others	1
Byblos	14
Byblos	7
Mastita	2
Blat	4
Kfar Zbouna	1
Eddeh	1
Amshit	1
Rayhany	1
Nahr Ibrahim	1
Bahdeidat	1
Kfoun	1
Hboub	2
Majdel Al Aqoura	1
Tartej	1
Others	3
Aley	83
Al Amrousieh	8
Hay Al Sillom	19
Qebbeh	4
Khaldeh	5
Al Oumara	5
Aramoun	12
Bshamoun	5
Bleibel	2
Houmal	2
Bdadoun	1
Bsous	3
Aley	6
Qmatieh	3
Baysour	1
Aabayh	2
Bhamdoun	2
Aadaysseh	1
Others	2

Zahleh	82
Al Maydan	3
Barbara	2
Maallaqa	6
Mar Antonios	1
Hoch Al Oumara	4
Arady	4
Mar Elias	1
Forzol	2
Hazzarta	1
Ablah	3
Qaa Al Rim	1
Ksara	5
Wady Al Arayesh	1
Makseh	1
Taalabaya	6
Jdita	2
Taanayel	1
Saadnayel	4
Qab Elias	5
Mreijat	2
Hoch Qayssar	1
Bar Elias	5
Anjar	1
Majdel Anjar	1
Riyak	1
Ali Al Nahry	1
R'eet	1
Terbol	2
Ein Kfarzabad	3
Kfarzabad	2
Others	9
Saida	85
Old Saida	3
Hlalieh	1
Haret Saida	3
Miyye W Miyye	1
Ein Al Helwe	9
Majdlyoun	8
Aabra	8
Qrayyeh	1
Bqosta	1
Ein Al Delb	1
Ghazieh	3
Arzy	1
Khrayeb	2
Mazraet Saknieh	1
Zrarieh	1
Adloun	2
Bablieh	1
Mazraet Qrayeh	1
Sarafand	3
Anqoun	3
Others	31
Jezzine	1
Ein Majdoleen	1

Matn	98
Borj Hammoud	4
Sin El Hil	7
Jdeidet Metn	4
Bouchrieh	5
Dora	5
SedBaouchrieh	2
Sabtieh	1
Dekwene	16
Antelias	6
Jal Al Dib	4
Naqqash	10
Zalka	5
Byaqout	1
Deir Aoukar	1
Mansouriyeh	12
Dayshounieh	1
Fanar	3
Ein Saadeh	1
Roumieh	3
Bsalim	8
Rabwe	1
Deek El Mahdy	1
Bekfayya	1
Broummana	2
Beit Merry	2
Mrouj	2
Others	8
Chouf	51
Damour	3
Saadiyat	1
Naameh	5
Haret Naameh	1
Chhim	3
Ketermaya	1
Sibline	1
Barja	6
Baaseer	2
Jiyyeh	5
Jadra	2
Wady Zayneh	1
Joun	1
Mgheiriyyeh	1
Deir Al Qamar	1
Semqanieh	1
Kfar Qatra	1
Kfarfaqoud	1
Deir Baba	1
Kfarheem	1
Baaqleen	3
Baqaata	1
Ein w Zein	1
Ammatour	1
Kahlounieh	1
Bater	1
Others	4

Akkar	26
Sheikh Mohammad	1
Old Akkar	2
Bebnin	1
Nahr Al Bared	6
Abdeh	2
Hmeira	1
Fneideq	4
Wady Al Jamous	1
Shedra	1
Rayhanieh	1
Qobayyat	1
Others	5
Bcharre	1
Bqerqasha	1
Menyeh Dunniyyeh	18
Menyeh	3
Aasoun	1
Bqaa Sefreen	1
Taran	2
Beit Al Faqs	2
Kharnoub	1
Qarseeta	2
Mrah Al Sreij	1
Kfarhabo	1
Bakh'oun	4

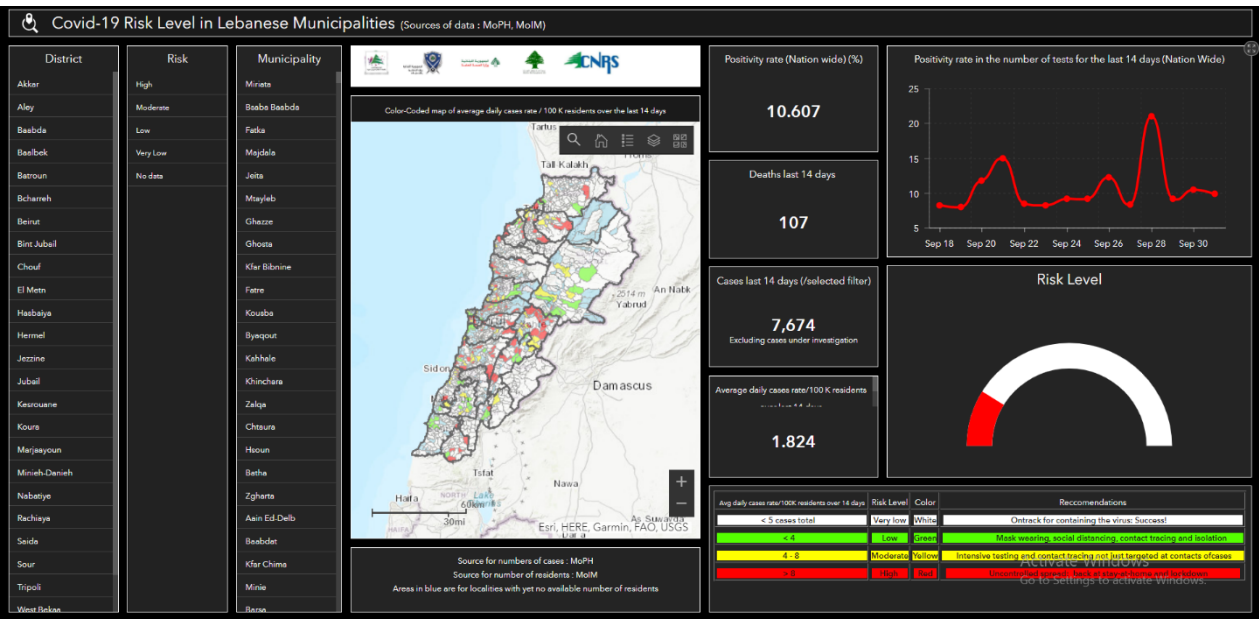
Baalbeck	27
Baalbek	2
Ras Al Ein	2
Nahle	1
Al Ein	1
Ersal	3
Bednayel	5
Beit Chama	1
Temnin Al Tahta	2
Shmestar	2
Taraya	1
Brital	1
Others	6
Western Beqaa	12
Saghbeen	1
Ein Zebdeh	2
Jebjinnine	2
Kamed Al Loz	1
Ghazeh	1
Manara	2
Marej	2
Others	1
Rashaya	3
Kfar Denees	2
Others	1

Tyre	43
Bass	1
Jal Al Shemaly	1
Rasheedieh	2
Borj Al Shemaly	5
Sama'ieh	1
Wady Jeelo	1
Rashknanieh	1
Saddeeqeen	1
Bazourieh	5
Teir Debba	1
Arzoun	1
Abbasieh	2
Jbal Al Botm	1
Zebqeen	1
Mansoury	1
Majdel Zoun	1
Others	17
Tripoli	24
Zaytoun	3
Haddadeen	1
Bab Al Ramel	1
Bsatine Al Mina	7
Amyoun	1
Bsarma	1
Kfar Qahel	1
Dahr Al Ein	2
Barsa	3
Nakhle	3
Asnoun	1

Nabatieh	24
Nabatieh Tahta	2
Kfar Al Joz	1
Kfar Remman	2
Shoukine	3
Kfour	2
Homeen tahta	1
Toul	1
Harouf	1
Dweir	1
Jebshit	2
Ansar	2
Qaaqajyet Jesr	1
Others	5

Others	171
--------	-----

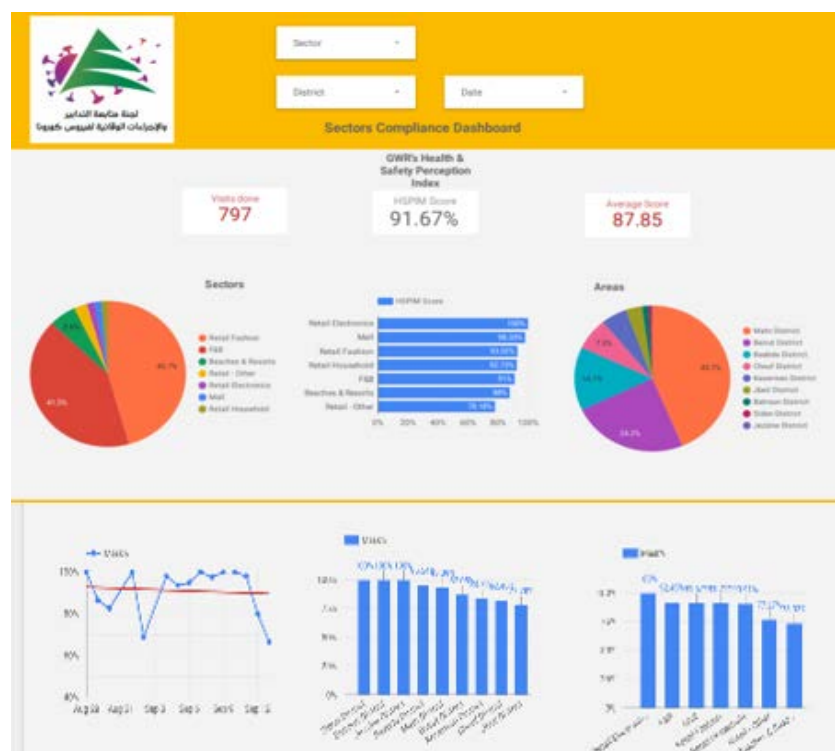
The Online platform to measure the level of risk of the spread of the new Corona virus



This interactive platform allows you to know the level of risk of spreading the kurna virus according to districts, based on the number of cases registered daily and the number of residents in each district. For more information on a daily basis, you can access the following link:

<https://bit.ly/DRM-RiskLevelInMunicipalities>

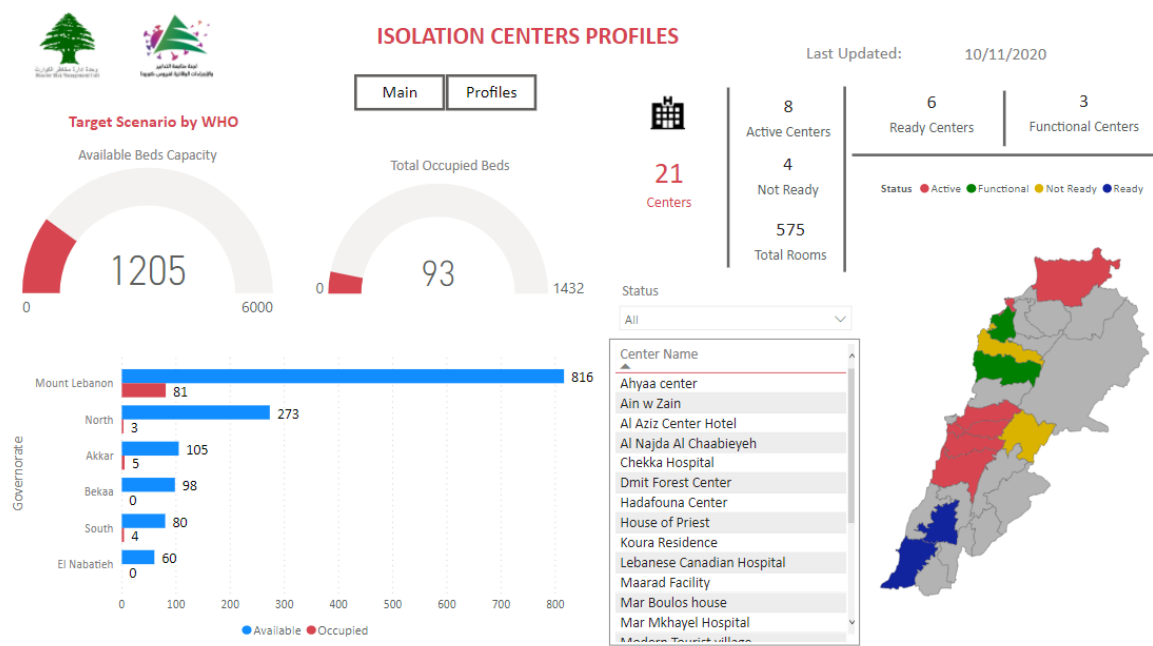
Online platform to track sector commitment in general mobilization procedures



Based on the recommendation issued by the National Committee for Follow-up of Preventive Measures and Measures to Confront the Coronavirus to open all sectors, provided that the general mobilization procedure (safe distance, muzzle, and hand sterilization) be applied, a special electronic platform was created that allows monitoring and measuring the percentage of commitment by various sectors on an ongoing basis. The detailed results can be viewed directly at the following link:

<http://bit.ly/covidsectordata>

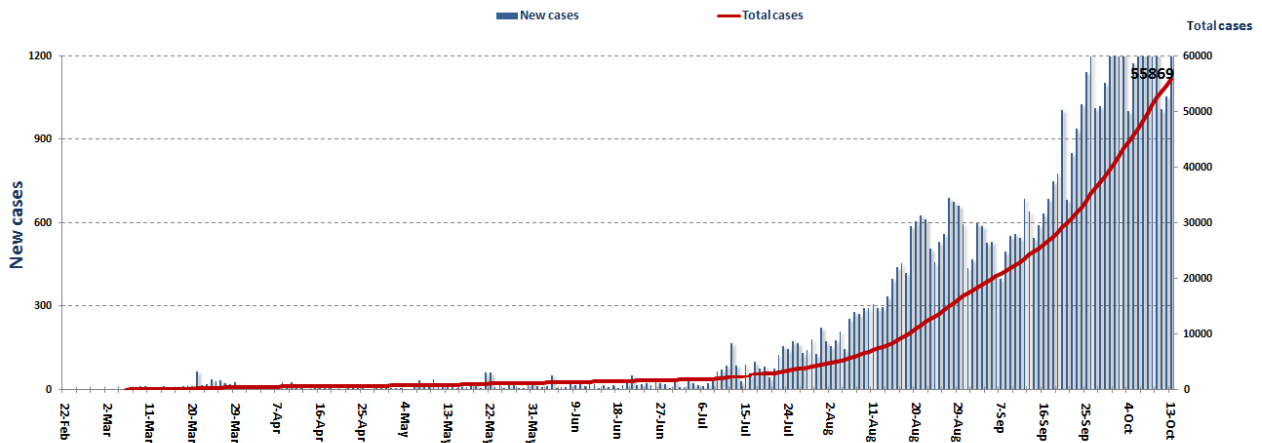
Occupancy rate of isolation centers for cases infected with Coronavirus



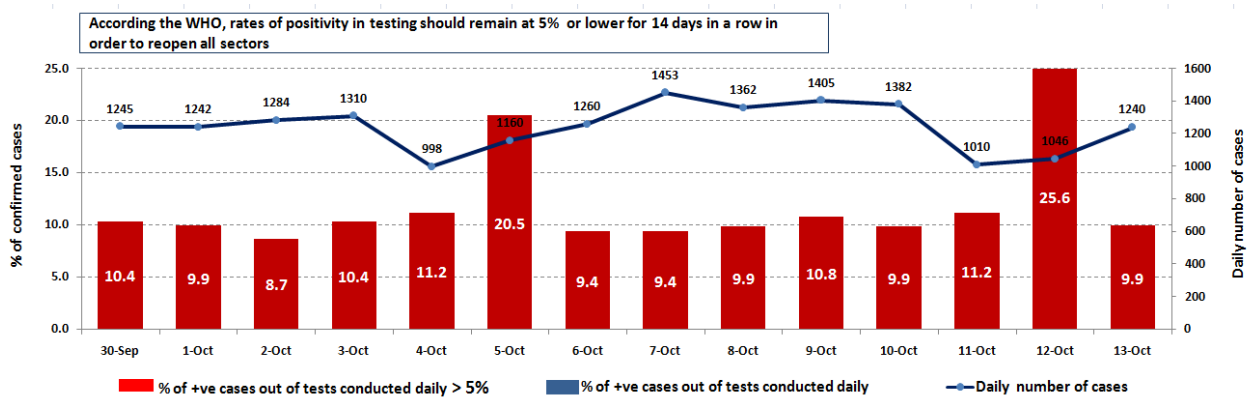
For more information about the isolation centers' distribution and the percentage of their occupancy, enter the following link: <http://bit.ly/DRM-IsolationCentersProfiles>

Note: These centers have been equipped in cooperation between the National Committee for Follow-up of Preventive Measures and Measures to Confront the Coronavirus and Governors and Municipalities, the United Nations Development Program, the World Health Organization, UNICEF, the Ministry of Public Health, the Syndicate of Nurses in Lebanon and the Syndicate of Specialists in Social Work.

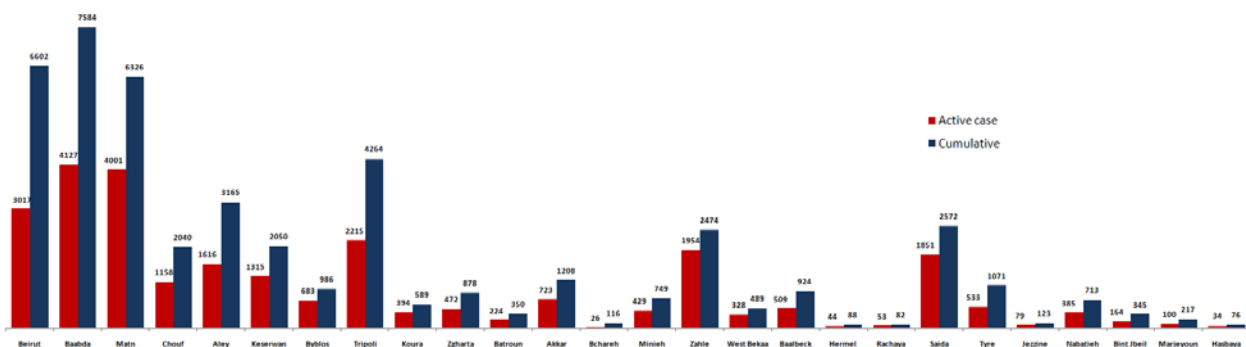
Cases per day



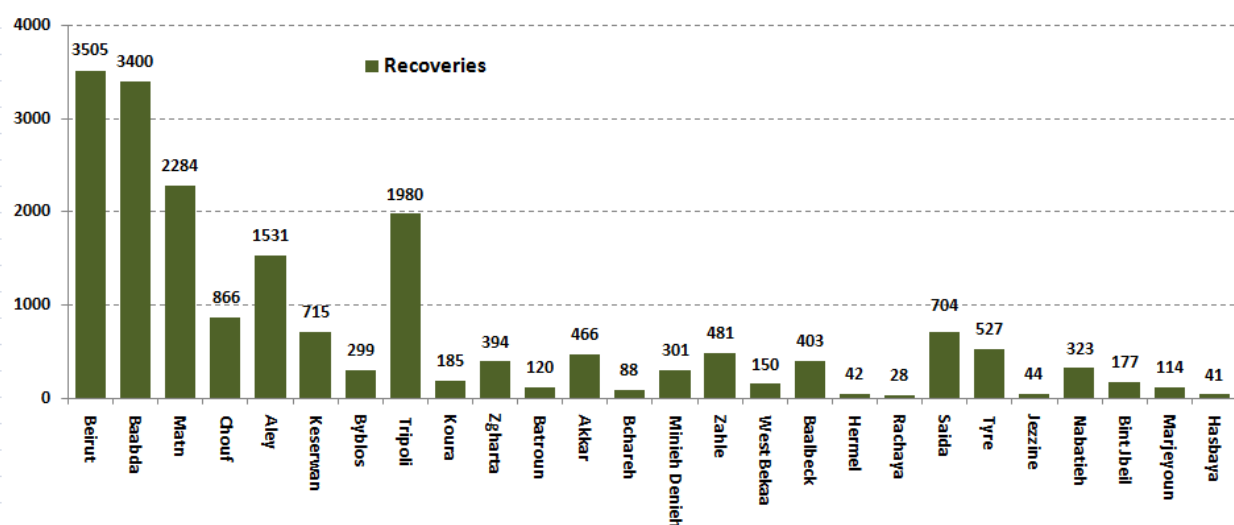
The percentage of positive cases out of the number of daily checks (30 September to 13 October 2020)



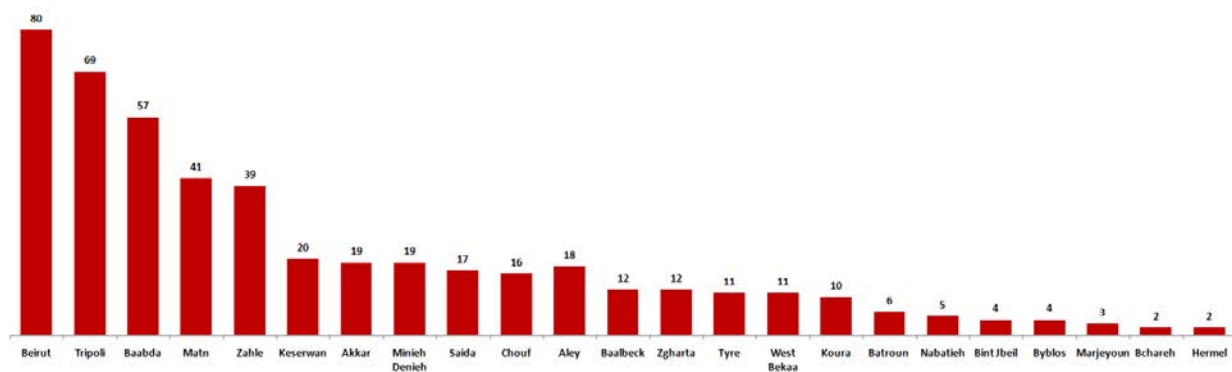
Distribution of Active Cases by Districts



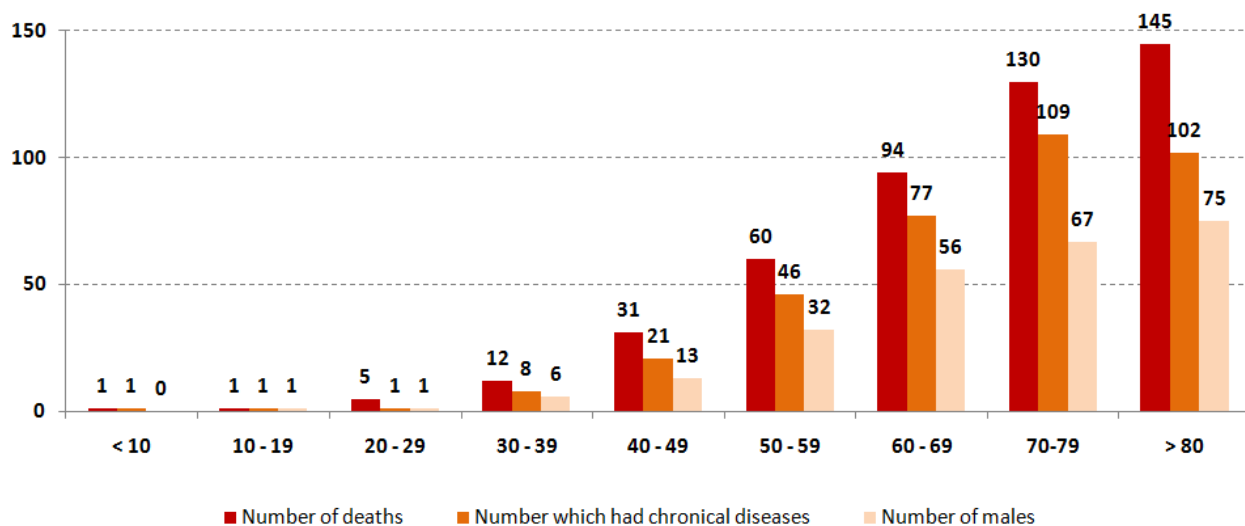
Recoveries



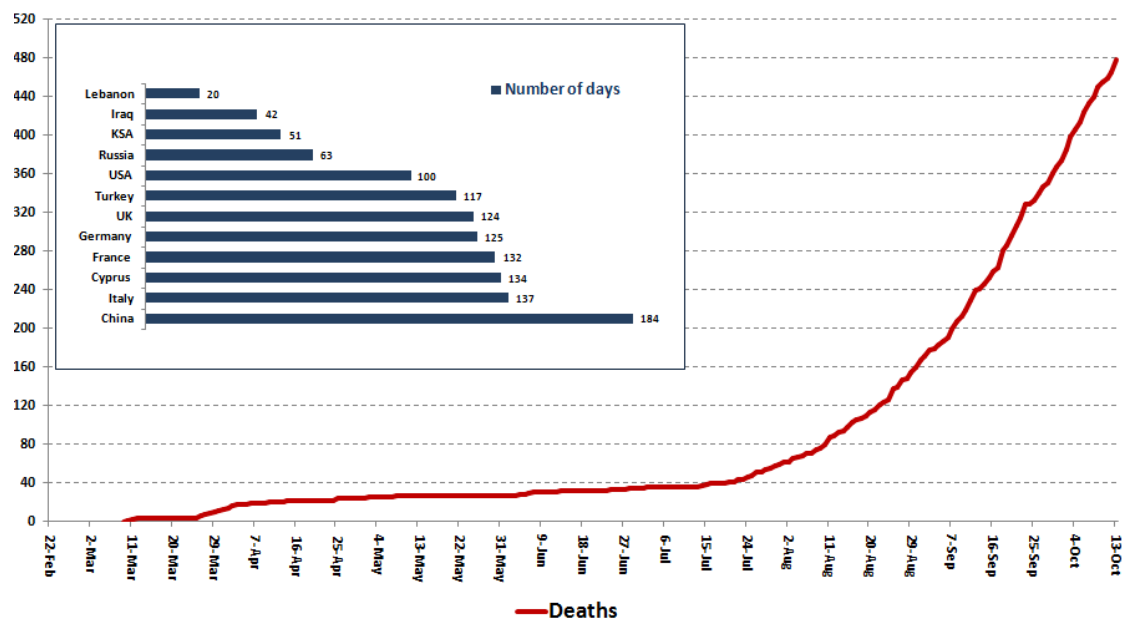
Distribution of deaths by Governorates



Distribution of deaths by Age



Comparison of the rate of doubling of the number of deaths in Lebanon with other countries (death doubling rate)

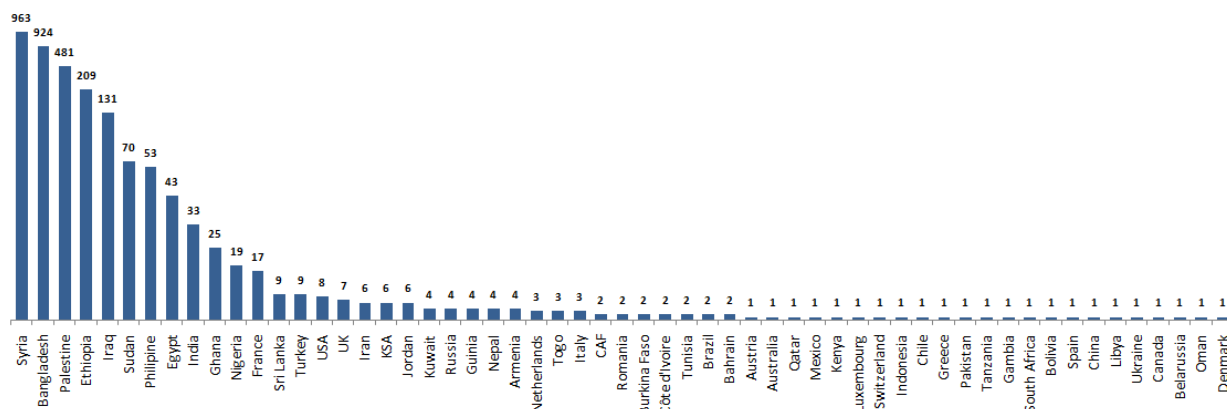


The distribution of the recorded deaths during the past 24 hours

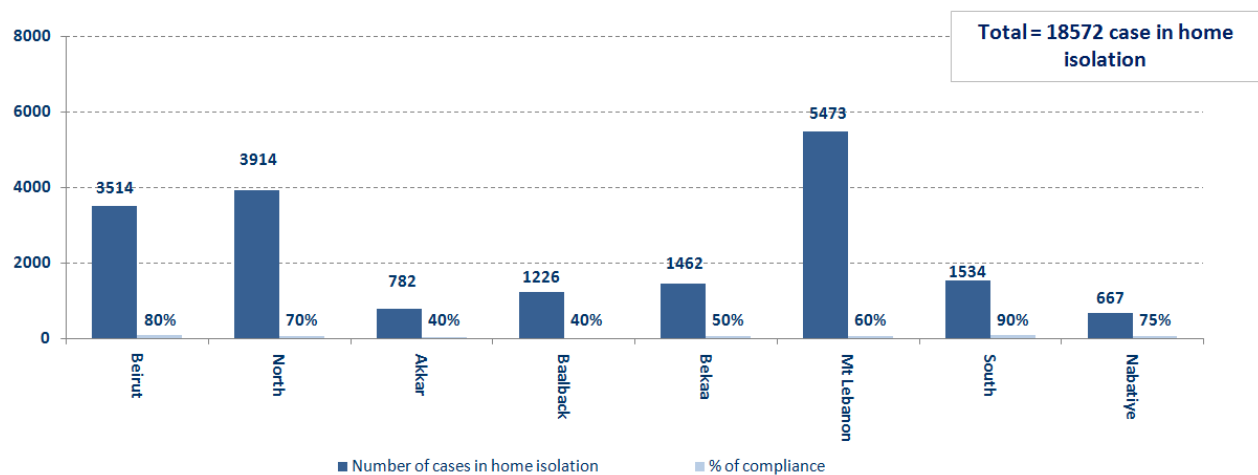
Hospital	Residence	Gender	Age	Chronic
Haykal	Minieh Denieh	Female	34	
Rasul Aazam	Baabda	Female	78	Yes
El NiNi	Tripolo	Female	75	Yes
El NiNi	Akkar	Male	42	Yes
AUBMC	Aley	Male	82	Yes
Doctors with no borders	Zahle	Male	60	
Herawi Gov.	Zahle	Female	66	Yes
Herawi Gov.	Zahle	Male	70	Yes
Harire Gov.	Maten	Male	31	No
Harire Gov.	Aley	Female	80	Yes
Harire Gov.	Aley	Female	63	Yes
Saint George	Baabda	Male	58	Yes
Saint George	Beirut	Female	84	Yes

Distribution of cases by nationality

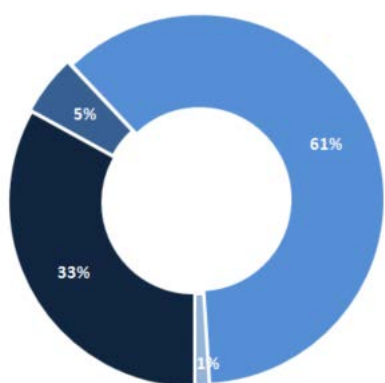
Lebanese : 51490 cases out of 55869 (88%)



Number of individuals in home isolation and percentage of commitment to isolation

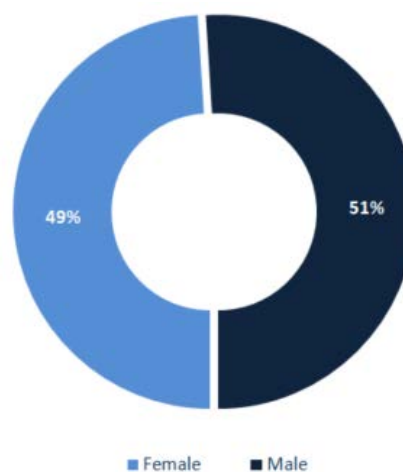


Exposure



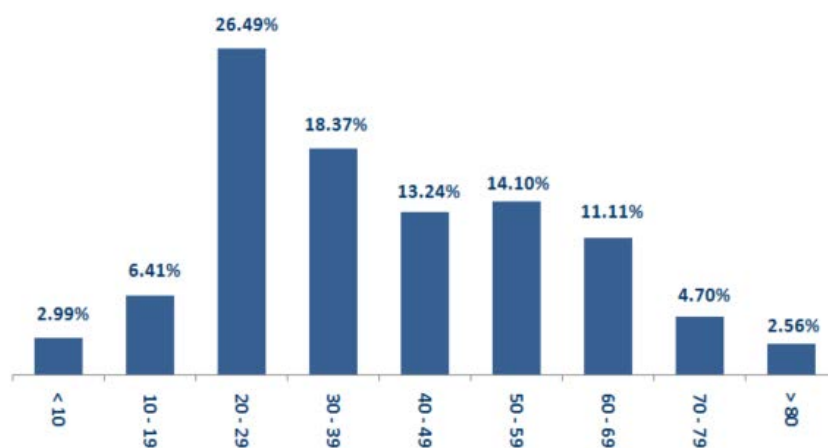
■ Contact with confirmed case ■ Travel related ■ Under investigation ■ Unidentified source

Distribution according to gender



■ Female ■ Male

Distribution by age



Decisions and actions taken – 10/13/2020

Ministry of Public Health

The Ministry of Public Health launched the new technique for diagnosing Coronavirus infection on arrivals to Lebanon via Rafic Hariri International Airport by using the sense of smell of trained dogs, a technique that a team of French and Lebanese researchers developed.

- The Ministry of Public Health is following up the procedures for identifying contacts with municipalities, especially in the towns that are registering an increasing number of positive cases, in addition to organizing campaigns for conducting PCR tests in various Lebanese regions.

- The Ministry of Public Health reports that PCR tests have been completed for flights that arrived in Beirut and were conducted at the airport on 10/10/2020, in addition to the first batch of checks for flights that arrived on 10/11/2020, where ten (10) positive cases were recorded and distributed over the following flights

Arriving from	Company	Flight Number	Number of Positive Cases
10/10/2020			
Erbel	MEA	325	2
10/11/2020			
Baghdad	Iraqi Airways	131	1
Istanbul	MEA	266	3
Al Najaf	MEA	329	2
Istanbul	Turkish Airlines	828	1
Istanbul	Turkish Airlines	826	1
Total			10

Lebanese Red Cross

234,025	Number of PCR tests transferred to laboratories	48,763 (255 New)	Number of additional ambulance centers ready to respond	48	ambulance centers	6,276 (55 New)	cases transferred to hospitals
166	Number of volunteers trained to transfer PCR tests	1,498	Number of trained paramedics	8,754	total number of respondents	81,312	number of those benefiting from awareness *sessions
967	The number of university volunteers trained to follow up on prevention measures in companies and institutions	291	Number of university volunteers trained to conduct awareness sessions	550	total LRC volunteers for covid19	8,626	number of trained managers for isolation centers
4,271 (5 New)	Number of beneficiaries from educational electronic platforms COVID-19	95,122	Number of distributed equipment	1,240,561	total distributed posters, brochures, and flyers on covid19 prevention	614	number of prisons that have been disinfected

General Directorate of Internal Security Forces

The number of seizure records during the past 24 hours					The total number of records since 03/08/2020	
Written records of violating institutions (absorptive capacity and preventive measures)				20		
Written records of persons violating the decision to wear a mask				4	Beirut	20,768
Written records of people violating the general mobilization decision (Aragil* and social distancing)				946	Mount Leb	19,389
Total				970	Beqaa	8,202
					North	7,104
Beirut	Mount Leb	Beqaa	North	South	South	7,114
122	358	125	225	140	Total	62,577

General Directorate of State Security

- Reporting new injuries to the General Directorate of State Security, bringing the total number of injured to 67 cases.
- Report on the opening of schools in various Lebanese regions in accordance with the decision of the Ministry of Education and Higher Education.
- Reporting the percentage of compliance with the general mobilization decision in the governorates, which came as follows within the past 24 hours:

Beirut	South	North	Akkar	Beqaa	Nabateih	Baalbek Hermel	Mount Leb
35%	50%	45%	50%	51%	65%	N/A	40%

General Directorate of General Security

- A statement about the closure of the two pens of Antelias and Bikfaya due to the presence of Coronavirus infections.
- Reporting the commitment of the municipalities to the decision of the Minister of Interior and Municipalities:

Municipalities that abided by the decision	Municipalities didn't abide by the decision
Mims, Azur, Kobayat, Sheikh Taba, Majdala, Shakra, Romain, Bint Jbeil, Rmeish, Debil, Arabsalim, Numayriya, Shukin, Chaheim, Barja, Houmal	Muhammara, Batroun, and Rumaila

- Follow up the implementation of the required security and preventive measures at the airport, ports and border crossings.
- Reporting cases registered in the various districts and cases in home quarantine.

Ministry of Public Works and Transportation

Departing Flights		Arriving Flights	
Number of Flights	33	Number of Flights	34
Number of Departing Individuals	3,896	Number of Arrivals	3,639

Port	Entered			Left		
	Import	Direction	#	Export	Direction	#
Beirut	Containers	Alexandrun	1			
Tripoli				Containers	Alexandrun	1
Total			1			1

General announcements

The Ministry of Interior and Municipalities issued Decision No. 1252 on 10/13/2020 related to amending the schedule of villages and towns that have been closed due to the high number of Coronavirus infections in them, as the towns of Naqoura, Jal el Dib, Za'ariyah, Batroun, Roumieh, Bikfaya - Al Muhaiditha, Bint Byblos from the attached table in Resolution No. 1250 issued on 10/11/2020, and the towns of Bakhoun, Naameh and Haret Al-Naameh shall be added to the table attached to the decision. Provided that consideration will continue to restore the situation to normal in the closed towns and villages, based on the results of the examinations.

Implementing the decision issued by the Ministry of Interior and Municipalities No. 1250 on 11/10/2020 related to the closure of some villages and towns due to the high number of cases of Coronavirus in them, based on the recommendations of the Committee for Follow-up of Measures and Preventive Measures of Coronavirus The main highlights of the decision:

- Closure of the towns listed in the decision starting from 6:00 a.m. on Monday 10/10/2020 until 6:00 a.m. on Monday 10/19/2020, provided that work stops in all official and private administrations and institutions located within those villages and cancellation All social events, parties, parties and gatherings of all kinds, and coordination with the clergy to close the houses of worship. The decision specified the sectors excluded from the closure decision.
- Keeping work at the time of preventing exit and entering the streets and roads between the first hour after midnight until six in the morning.
- Determining the number of people traveling by public and private transportation (3 people in public cars, 4 people in private cars, half the carrying capacity of common transport vehicles and buses).
- A complete closure until further notice, without any exceptions, for all bars, cabarets, and nightclubs on all Lebanese territories, subject to the risk of referring the violators to the competent court.
- The commitment of citizens in all regions to wear masks, maintain safe distances, and avoid overcrowding.
- Assigning governors to determine the municipal zone in the major towns included in the decision and overlapping with other towns, taking appropriate measures to implement the content of the decision, stressing citizens in villages and towns that will be closed with the necessity to stay in homes and not to walk around and to wear masks when forced movement
- Assigning the General Directorate of Internal Security to strictly enforce this decision and suppress violations, and to organize arrest records against violators.

The Ministry of Education and Higher Education issued Decision No. 463 / M / 2020 on 10/9/2020 regarding the date of the commencement of teaching in public and private schools and high schools for the academic year 2020/2021. The main highlights of the decision:

- The start of teaching in public and private schools and high schools starting from 10/21/2020 for students in the ninth, second and third grades of secondary, 10/26/2020 for students in the grades of kindergartens, seventh and eighth primary and first secondary, 11/2/2020 for students in the classes of the first and second grades.
- Beginning of teaching in private and public schools and high schools for non-Lebanese students in the afternoon shift starting from 10/21/2020.
- Adopting the blended learning scenario, considering the specificity of each educational institution, provided that the classroom occupancy rate does not exceed 50%.
- The class remains one group if the total number of students does not exceed 18, provided that the principle of spacing and a safe distance between students is respected.
- Organizing lists of students' names, phone numbers, and place of residence for notification if the school is closed, pursuant to the decision of the Minister of Interior and Municipalities to limit the spread of the epidemic.

Note: The decisions can be found at www.drm.pcm.gov.l

Examples of lack of adherence to safety measures

Failure of some municipalities to abide by the Ministry of Interior and Municipalities Decision No. 1025/2020 related to the closure of towns that have a high risk of the spread of the epidemic.

- Demand gatherings and demonstrations.
- Failure to comply with the preventive measures and procedures required in several stores and markets (putting on a muzzle or face mask, sterilizing hands, maintaining a safe distance).
- Non-compliance with the 50% occupancy rate in several restaurants and amusement game centers.
- Gatherings for social events.
- Failure of those in contact with confirmed cases to adhere to home isolation procedures until the results of the laboratory tests are issued.

If you feel any symptoms, call directly the hotline of the Ministry of Public Health: 1214 or 01/594459

A list of the laboratories accredited by the MoPH to conduct PCR tests

المختبرات الحكومية المؤهلة لإجراء التشخيص المخبري لفيروس كورونا بطريقة الـ RT-PCR

المختبر	الموقع
مستشفى رفيق الحريري الجامعي RHUH	بيروت
مستشفى حيا الحكومي	حيا
مستشفى طرابلس الحكومي	طرابلس
مستشفى البترون الحكومي	البترون
مستشفى فتوح كسروان الحكومي (البوار)	كسروان
مستشفى نبيه بري الحكومي الجامعي	النبطية
مستشفى تينين الحكومي	تينين
مستشفى بنت جبيل الحكومي	بنت جبيل
مستشفى بعلمك الحكومي	بعلمك
مستشفى الرئيس الياز اليراي الحكومي	زحلة

مختبرات المستشفيات العسكرية

بيروت	المستشفى العسكري المركزي في بيروت Hôpital Militaire Central
-------	---

المختبرات المؤهلة لأخذ عيّنات "المسحات الأنفية" بطريقة Drive- thru

مختبر ميديكال دياغنوستيك تريتمانت سنتر (الحمراء)	بيروت
Medical Diagnostic Treatment Center (MDTC)	بيروت
مختبر ميد لاب MedLab SAL CIC ALS (الحمراء - الجبلون)	بيروت
مختبرات عيتاني Itani Medical Laboratories (المزرعة)	بيروت
مختبر أ ب سي ABC Laboratories	الأشرفية
مختبرات معوض الطبية Mouawad Medical Laboratory	الشياح
مختبرات الشياح (د. فؤاد ربحان) Rihan Medical Center	الشياح
مختبر إكسبرت لاب Expert Lab	المنصورة
مختبر لايف لاب Life LAB	بعلمك
مستشفى الرياق Riyak Hospital	رياق

المختبرات الخاصة المؤهلة لإجراء التشخيص المخبري لفيروس كورونا بطريقة RT-PCR

الموقع	المختبر
بيروت	مستشفى الجامعة الأميركية AUBMC
بيروت	مستشفى أوتيل ديو الجامعي (HDF) Hotel-Dieu de France
بيروت	مختبرات روتولف ميريو (الجامعة الموسوعة - المتحف) Laboratoire Rodolphe Mérieux (Université Saint-Joseph)
بيروت	مستشفى القديس جاورجيوس الجامعي Saint-George Hospital - UMC
بيروت	مستشفى المقاصد Makassed General Hospital
بيروت	مستشفى رزق الجامعي LAU Medical Center - Rizk Hospital
بيروت	مستشفى اللبناني الجعثاوي الجامعي Hôpital Libanais Geitawi - CHU
بيروت	مستشفى الوردية Hôpital Notre-Dame du Rosaire
بيروت	مختبر مركز الأطباء Doctor 's Center
بيروت	مختبر فونتانا (الحمرا) Fontana Laboratories
بيروت	مختبر الأمن العام (العدلية)
بيروت	مختبرات جبر وعرة Laboratoire Jabre-Ghorra
بيروت	مختبر السان مارك Saint Marc Medical & Diagnostic Center
الغبيري	المختبرات الحديثة Laboratoire Moderne (Modern Lab- Berjaoui)
الغبيري	مستشفى الساحل Sahel General Hospital (SGH)
الغبيري	مستشفى الزهراء الجامعي
برج الزجاجة	مستشفى الرسول الأعظم Al Zahraa Hospital - UMC
بيروت	مستشفى بهمن
بيروت	مختبر ناتيونال دياغنوستيك سرفيس كومباني Bahman Hospital Al Rassoul Al Aazam Hospital
بيروت	مختبر ناتيونال دياغنوستيك سرفيس كومباني National Diagnostic Services Company (NDSC)
المرجعة	مختبر الدكتور محمود عثمان - مركز التحليل الطبية Medical Diagnostic Center
النجاح	مختبر أميريك دياغنوستيك سنتر American Diagnostic Center (ADC)
بعنا	مستشفى جبل لبنان Mount Lebanon Hospital
بعنا	مستشفى السان جورج الحدث Hôpital Saint-George – Hadath
بعنا	مختبر الهادي Al Hadi Laboratory
بعنا	مختبر INOVIE-Liban

الحازمية	مستشفى قلب يسوع Hôpital du Sacré- Coeur
الحازمية	مختبر كلينيجان Clinigene
المن	مستشفى سرحال Hôpital Dr.Samir Serhal
المن	مختبر ترانس ميدكال فور ليف Transmedical for Life
الزلفا	مستشفى هارون Haroun Hospital
المنصورة	مستشفى بلفو Bellevue Medical Center (BMC)
الكورة	مستشفى هيكال Hôpital Albert Haykal
زغرتا	مركز الشمال الإستشفائي Centre Hospitalier du Nord (CHN)
طرابلس	مستشفى المظلوم Mazloum Hospital
طرابلس	مستشفى المنلا Al Mounla Hospital
طرابلس	مستشفى النيني Nini Hospital
طرابلس	مختبر ميكروبيولوجيا الصحة والبيئة LMSE - المعهد العالي للدكتوراه، الجامعة اللبنانية
جبل	مستشفى سيدة المعونات الجامعي CHU - Notre-Dame des Secours
جبل	مختبر عقيقي ويولس Lab Akiki & Boulos
جونية	مختبر واكيم Centre Médical Wakim
الشوف	مستشفى عين وزين Ain Wazein Hospital
صيدا	مستشفى حمود الجامعي Hammoud Hospital UMC
صيدا	مختبر الكريم Al Karim Medical Laboratory (KML)
النبطية	مستشفى الشيخ راجب حرب Sheikh Ragheb Harb Hospital
النبطية	مختبر المباح Sabbah Diagnostic Center (SDC)
صور	مستشفى جبل عامل Jabal Amel Hospital
صور	مختبر المشرق Mashrek Diagnostic Center (MDC)
بعلبك	مستشفى دار الأمل الجامعي Dar Al Amal University Hospital
زحلة	مستشفى خوري Khoury General Hospital
زحلة	مختبر ميديكال كير سنتر Medical Care Center (MCC)