



Lebanon National Operations Room

Daily Report on COVID-19

Sunday, December 13, 2020

Report #270

Time Published: 09:00 PM

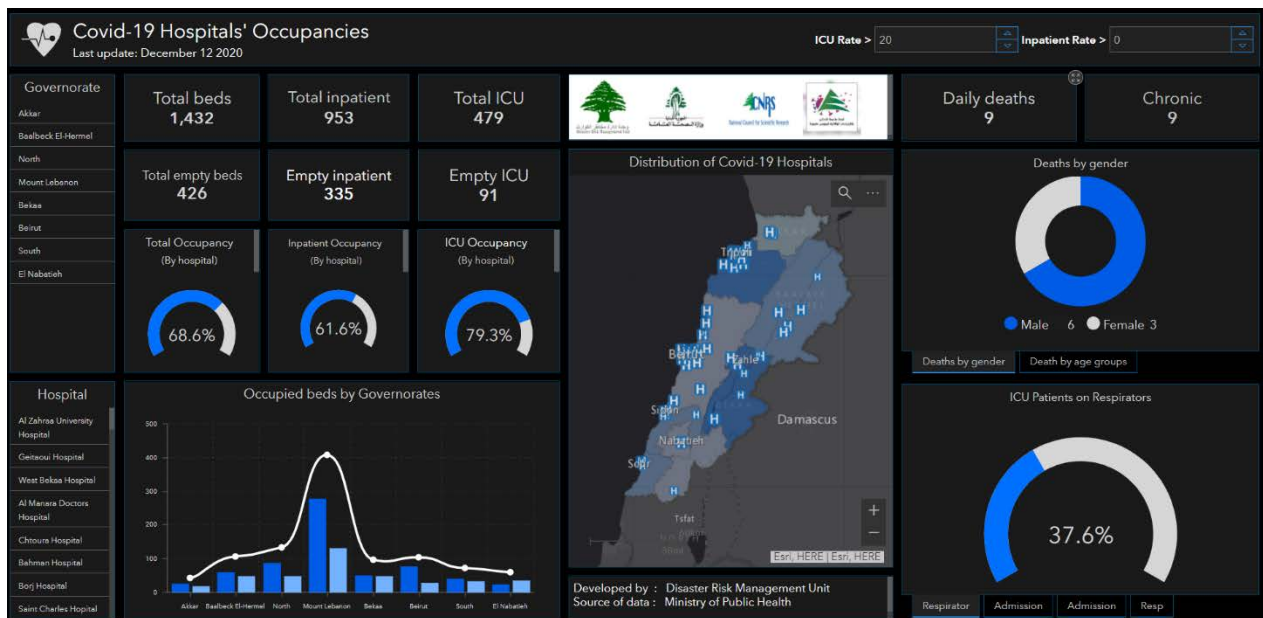
New in the report:

Ministry of Interior and Municipalities Decision No. 1556 of 12/13/2020 regarding the amendment of preventive measures and procedures to confront the Corona epidemic

1,275 New Cases		146,520 Total Cases since 21.2.2020		1,200 Total Deaths		101,417 Total Recovered	
1,242 Residents	33 Expats	143,488 Residents	3,032 Expats	10 New Deaths		1,904 New Recovered	
78 Deleted Status due to its recurrence		1,837 Total Cases in the Health Sector		43,903 Total Active Cases		990 Hospitalized Cases	
12.8% AVG Positivity rate		7 Cases in the Health Sector		43,913 Cases in Home Isolation		139 Ventilated Cases	3 New Cases in ICU
1,642,650 COVID-19 Tests since 21.2.2020		391 Total cases in ICU		599 Mild cases			
1,100 COVID-19 Tests at Airport within 24 hrs.		10,927 COVID-19 tests for residents within 24 hrs.					
Lebanon Status compared to the World							
Total Cumulative				146,520		72,374,404	
Total Deaths				1,200		1,615,818	
Deaths percentage				0,81%		2.23%	
Total recoveries				101,417		50,712,762	

Ref: Ministry of Public Health Data

Occupancy rate of COVID-19 Beds and Availability



For daily information on all the details of the beds distribution availability for Covid-19 patients among all governorates and according to hospitals, kindly check the dashboard link:

Computer : <https://bit.ly/DRM-HospitalsOccupancy-PC> Phone: <https://bit.ly/DRM-HospitalsOccupancy-Mobile>

Distribution of Cases by Villages

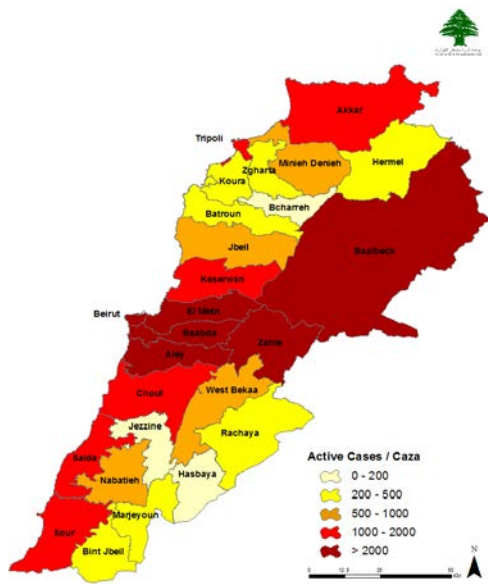
Beirut	78	Baabda	180	Maten	116	Chouf	71	Kesrwen	48	Tripoli	54
Ain El Mraisseh	1	Chiyah	10	Borj Hammoud	8	Damour	1	Jounieh Sarba	4	Trablous Ez Zeitoun	8
Ras Beyrouth	2	Jnah	2	Sinn El Fil	3	Saadiyat	1	Jounieh Kaslik	2	Trablous Bab Er Raml	1
Manara	1	Ouzaal	7	Jdaidet El Matn	1	Chhim	5	Zouk Mkayel	3	Trablous Et Tall	2
Qreitem	2	Bir Hassan	2	Baouchriyeh	3	Mazboud	1	Jounieh Ghadir	1	Trablous El Qoubbeh	4
Raoucheh	2	Madineh Er Riyadiyeh	1	Raouda (Baouchriyeh)	4	Daraiya (Chouf)	1	Zouk Mosbeh	3	Trablous Ez Zahriyeh	3
Hamra	6	Ghbayreh	18	Sabtiyeh	1	Aanout	1	Adonis	1	Trablous Et Tabbaneh	1
Msaitbeh	5	Ain Er Roummaneh	4	Dekouaneh	12	Sibline	1	Jounieh Haret Sakhr	2	Trablous Jardins	7
Mar Elias	3	Furn Ech Chebbak	5	Antelias	1	Barja	6	Jounieh Sahel Aalma	2	Mina N:1	6
Unesco	2	Haret Hreik	31	Jall Ed Dib	9	Dibbiyeh	2	Adma Oua Dafneh	4	Mina N:2	1
Tallet El Khayat	3	Laylakeh	2	Naqqach	2	Jiyeh	2	Safra	1	Qalamoun	3
Dar El Fatwa	2	Borj El Brajneh	24	Zalqa	6	Jadra	3	Bouar	2	Beddaoui	5
Sanayeh	1	Mreijeh	9	Byaqout	5	Ouadi Ez Zayni	2	Aaqaybeh	2	Camp Beddaoui	4
Zarif	1	Tahouitat El Ghadir	5	Dbayeh	3	Zaarouriyeh	1	Aajaltoun	3	Others	9
Qantari	1	Baabda	4	Mazraat Deir Aoukar	4	Beit Ed Dine	1	Ballouneh	4	Koura	15
Mazraa	4	Hazmiyeh	6	Mansouriyeh	4	Deir El Qamar	1	Shayleh	2	Bziza	3
Borj Abou Haidar	2	Yarzeh	1	Fanar	5	Kfar Qatra	1	Jaaita	1	Bsarma	2
Basta El Faouqa	1	Hadath	27	Ain Saadeh	5	Mazraat Ed Douair	2	Kfar Hbab	1	Kousba	1
Tariq Ej Jdideh	7	Louayzeh	1	Roumieh	7	Kfar Faqoud	1	Borj El Ftouh	1	Kfar Hata	1
Ras En Nabaa	1	Kfar Chima	2	Bsalim	4	Kfar Him	1	Rihane	1	Barghoun	1
Bachoura	2	Bsaba	1	Rabiyeh	1	Dmit	3	Ghosta	1	Enfeh	1
Basta Et Tahta	5	Baalchmay	3	Qornet Chehouane	1	Brih	4	Nammoura	2	Ras Masqa	1
Rmeil	5	Aabadiyeh	2	Raboueh	3	Baagline	3	Aazra Ouel Aazr	1	Bohsas	2
Achrafiyeh	10	Ras El Matn	2	Mazraat Yachouaa	3	Ainbal	1	Yachouch	1	Dahr El Ain	1
Aadlyeh	2	Chouit	1	Zakrit	2	Gharifeh	2	Raachine	1	Barsa	1
Sioufi	1	Qobbayaa	2	Bikfaya	1	Moukhtara	2	Kfar Dibiane	2	Nakhleh	1
Others	6	Salima	1	Qnaytra (Matn)	1	Botmeh	4	Jbeil	41	Zgharta	38
Bcharreh	11	Hammana	1	Himlaya	1	Jdaideh (Chouf)	2	Jbayl	5	Zgharta	11
Bcharreh	4	Chbaniyeh	2	Aatchaneh	1	Beqaata (Chouf)	3	Mastita	4	Rachaine	8
Aabdine	2	Qornayel	2	Qornet El Hamra	1	Ain Ouzain	5	Blat (Jbayl)	1	Biader Rachaine	3
Tourza	1	Bzbedine	1	Broummana (Matn)	3	Khreibeh (Chouf)	1	Eddeh (Jbayl)	2	Asnoun	1
Qnat	2	Kfar Selouane	3	Qennabet Broummana	1	Kahlouniyeh (Chouf)	1	Aamchit	1	MEJdlaya	2
Blaouza	1	Others	8	Baabdat	1	Kfar Nabrakh	2	Halate	4	Haret Ej Jdideh	1
Others	1	Beqaa Gharby	38	Beit Meri	1	Mristi	1	Fidar	2	Haret El Faouar	1
Minieh Danniyeh	17	Machghara	6	Mtain	1	Jbaa	1	Nahr Ibrahim	1	Aalma	1
Minieh	7	Khribet Qanafar	1	Bnabil	1	Bater	1	Mounsef	1	Khaldiyyeh	1
Sir Ed Danniyeh	1	Aana	1	Mrouj	1	Barouk	1	Ehmej	3	laal	1
Aassoun	1	Joubb Jannine	4	Dhour Ech Choueir	1	Aleyh	65	Tourzaia	1	Kfar Zeina	1
Beit Houik	1	Lala	1	Baskinta	1	El Aamroussiyyeh	1	Lehfed	1	Ehden	1
Kfar Habou	1	Kamed El Laouz	2	Others	3	Hay Es Sellom	9	Brayl (Jbayl)	1	Aarbet Qouzhaia	1
Markebta	1	Baaloul	1	Hermel	3	Ghadir Chouefat	2	Ghalboun	1	Miziara	1
Bakhaaoun	5	Ghazze	3	Others	3	El Qoubbeh	2	Hsarat	5	Others	4
Zahleh	85	Soultan Yaaqoub	1	Rachaiya	12	Khaldeh	3	Qartaba	2	Batroun	15
El Midane	1	Qaraaoun	1	Kfar Qouq	1	Oumara	11	Tartij	3	Batroun	2
Er Rassiyyeh	2	Manara	1	Kfar Denis	1	Aaramoun	9	Others	3	Kfar Aabida	2
El Berbara	1	Saouiri	2	Mhaiydeh	3	Bchamoun	2	Akkar	79	Chikka	3
El Maallaqa	2	Sohmor	4	Kaoukaba Bou Aarab	1	Bdadoun	1	Halba	5	Kour	1
Karak Nouh	2	Libbaya	1	Khribet Rouha	1	Bsous	1	Cheikh Mohammad	1	Aabrine	1
Saydet En Najat	1	Marj	1	Bireh	1	Aaley	6	Jdaidet Ej Joumeh	1	Hamat	6
Haouch El Oumara	1	Others	8	Mdoukha	2	Ain Hala	1	Zouarib	1	Nabatiyeh	32
Zahleh Aradi	1	Baalbek	59	Deir El Aachayer	1	Kahhaleh	2	Minyara	2	Nabatiyeh Et Tahta	8
Zahleh Mar Elias	1	Baalbek	7	Aayta El Foukhar	1	Richmaia	1	Karm Aasfour	1	Nabatiyeh El Faouqa	1
Nabi Ayla	1	Douris	2	Saïda	18	Kfar Matta	2	Machha	1	Mazraat Kfar Jaouz	1
Hazerta	1	Kfar Dane	1	Saïda El Qadimeh	4	Bhamdoun Ed Dayaa	1	Hayzouq	1	Zibdine	1
Ablah	3	Ain	5	Haret Saïda	1	Chanay	1	Bqerzla	4	Kfar Roummane	2
Niha	1	Nabi Osmane	1	Miyeh Ou Miyeh	2	Majdel Baana	1	Zouq El Hbalsa	1	Kfar Tibnit	3
Ksara	4	Laboueh	1	Ain El Heloueh	1	Saoufar	1	Tikrit	2	Kfour	1
Quadi El Aarayech	1	Taoufiqiyeh	1	Ain Ed Delb	2	Mecherfeh	2	Bezrina	1	Aarab Salim	1
Chtaura	1	Chaat	1	Ghaziyeh	2	Others	6	Aakkar El Aatiqa	1	Deir Ez Zahrani	2
Jalala	2	Ram	1	Aadloun	1	Bnt Jbeil	8	Hayssa	1	Nmairiyeh	1
Makseh	1	Younine	1	Babliyyeh	1	Aaytaroun	1	Cheikh Aayache	1	Douair	1
Taalabaya	4	Bednayel	6	Ghassaniyyeh	1	Rmaych	1	Qleiaat	1	Jibchit	2
Jdita	4	Qsarnaba	6	Others	3	Tibnine	1	Bebnine	5	Insar	4
Saadnayel	2	Haouch Er Rafqa	1	Tyre	19	Kounine	3	Mhammara	1	Qaaqayet Ej Jisr	1
Qabb Elias	4	Temnine Et Tahta	9	Sour	3	Kafra	2	Nahr El Bared	2	Kfar Sir	1
Barr Elias	8	Chmistar	2	El Bahr Ech Chemali	1	Marjaayoun	11	Aabdeh	4	Sir El Gharbiyyeh	1
Aanjar	2	Haouch Snaid	3	Borj Ech Chemali	1	Marjaayoun	1	Berqayel	2	Others	1
Nasriyyeh	1	Serraaine El Faouqa	1	Smaiyeh	2	Borj El Mlouk	2	Qabaait	1	Hasbaiya	21
Riyaq	4	Khodr	1	Qana	1	Kfar Kila	3	Hrar	1	Hasbaiya	10
Aali En Nahri	7	Brital	2	Rmadiyyeh	2	Houla	1	Beit Ayoub	2	Hasbaiya Khalouat	1
Deir El Ghazal	1	Maaraboun	1	Aabbassiyeh	5	Markaba	1	Jdaidet El Qaytea	1	Ain Jarfa	1
Raait	1	Others	6	Chaitiyeh	2	Meiss Ej Jabal	1	Qorneh	1	Rachaiya El Foukhar	1
Terbol	1	Jezzine	6	Zebqine	1	Souaneh	2	Fnaydeq	1	Hebbariyyeh	2
Ain Kfar Zabad	1	Jezzine	1	Others	1			Sindianet El Majdel	1	Ain Qinia	1
Kfar Zabad	5	Qaytoui	1					Khribet Daoud	1	Chebaa	1
Others	13	Bayssour	1					Kouachra	1	Marj Ez Zouhour	1
		Ouadi Baanqoudain	1					Dibbahiyyeh Charqiyeh	1	Meri	2
		Anane	1					Aamaret El Baykat	1	Hilta	1
		Mliik	1					Saidnaya	2		
								Qbaiyat	3		
								Ouadi Khaled	4		
								Akroum	1	Others	125

All reports and related decisions can be found at: <http://drm.pcm.gov.lb>

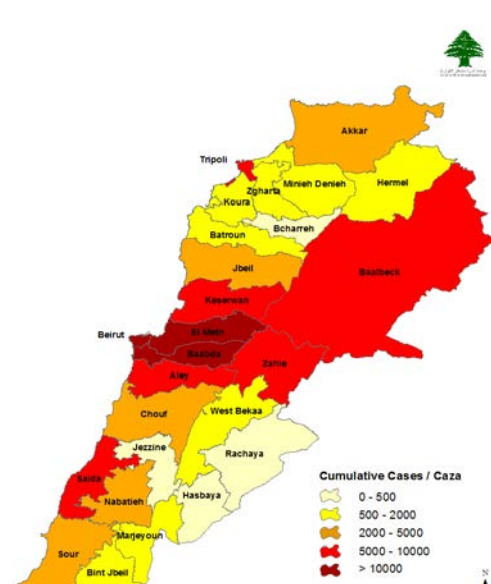
Or social media @DRM_Lebanon

Distribution of Active and Cumulative Cases

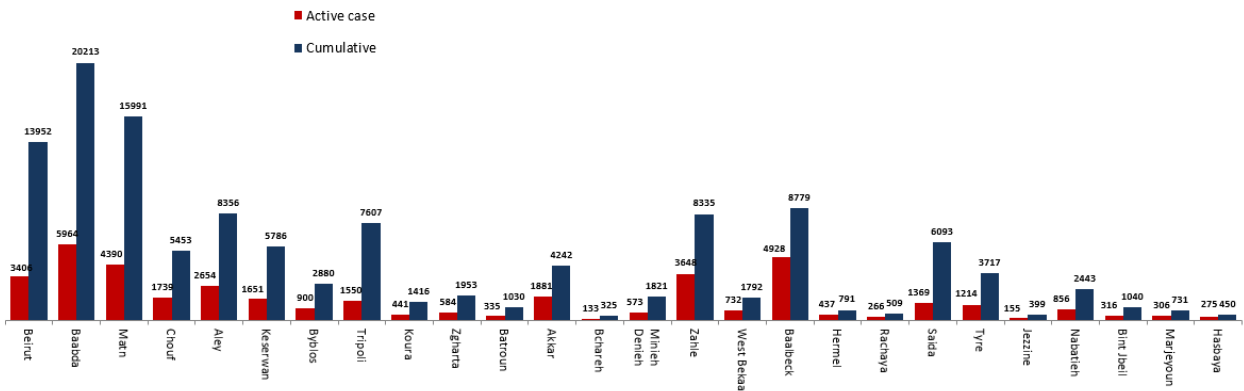
Distribution of Active Cases



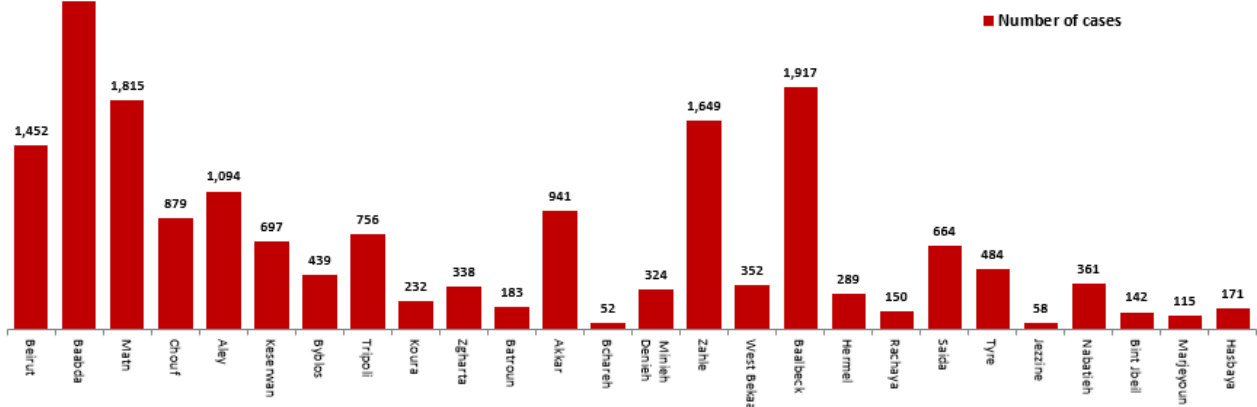
Distribution of Cumulative Cases



Number of Cases by Location



Number of cumulative cases for the last 14 days



All reports and related decisions can be found at: <http://drm.pcm.gov.lb>

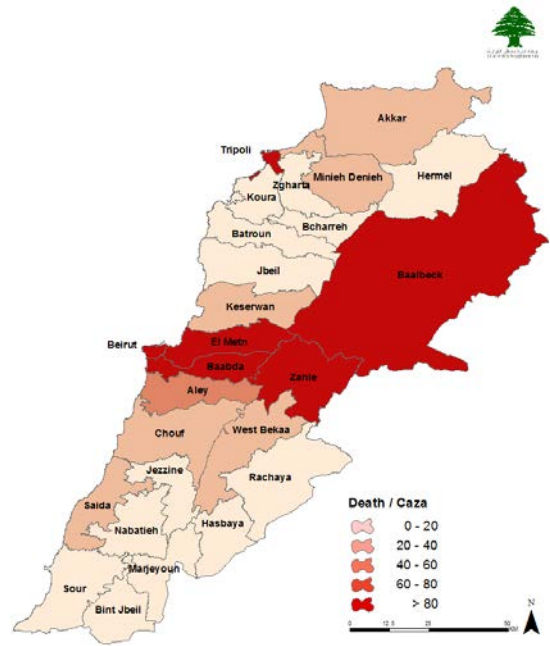
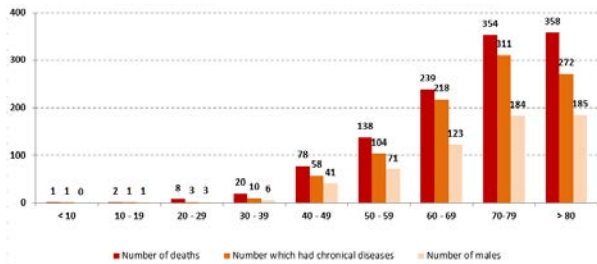
Or social media @DRM_Lebanon

Distribution of Death Cases

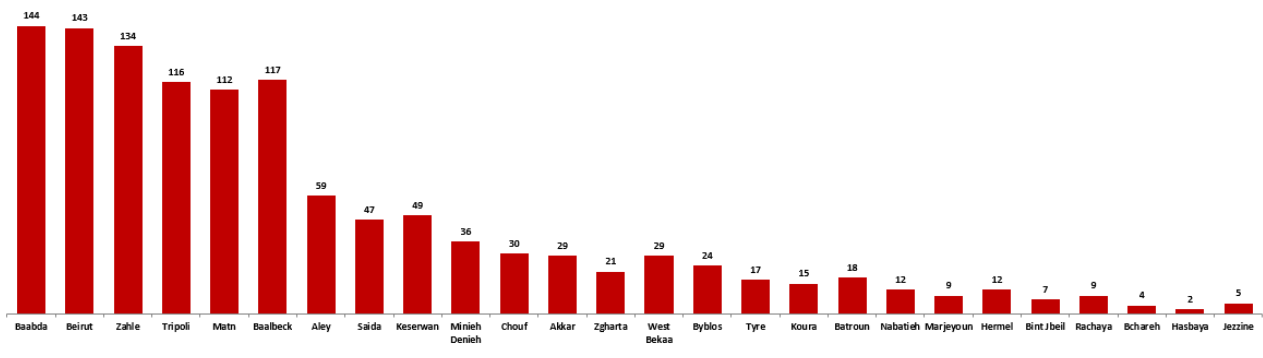
Distribution of deaths during the past 24 hours

Hospital	Residence	Gender	Age	Chronic
Maritime Hospital	Koura	Male	61	No
Berri Gov Hospital	Tyre	Male	74	Yes
Hamchreih Hospital	Saida	Male	74	Yes
RHUH	Maten	Male	70	Yes
RHUH	Baalbek	Male	93	Yes
RHUH	Beirut	Male	71	Yes
Ftough Kesrwen	Beirut	Female	84	Yes
Ftough Kesrwen	Maten	Male	90	Yes
Maritime Hospital	Kesrwen	Male	74	Yes
Home	Jbeil	Female	98	Yes

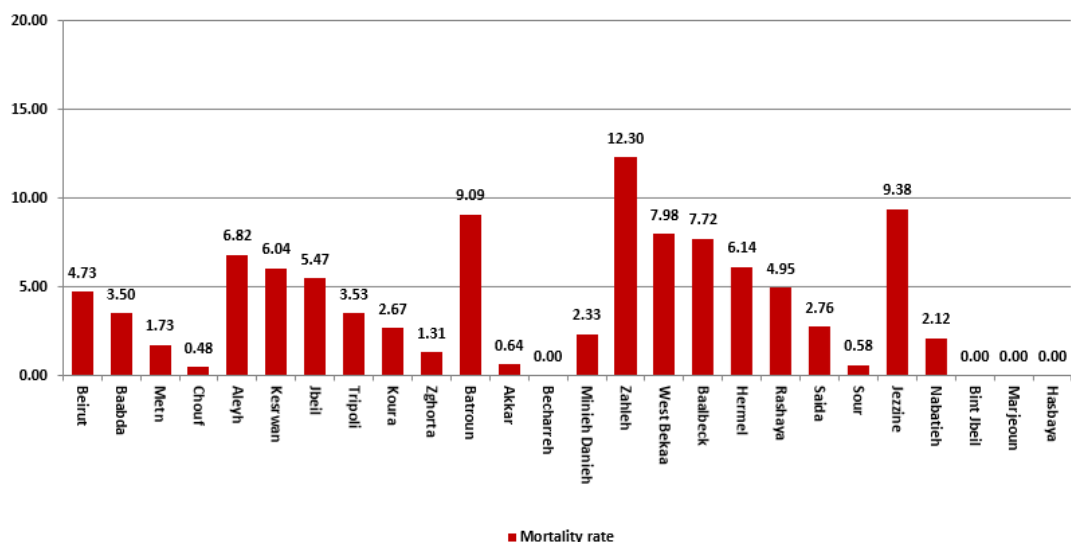
Distribution of deaths by Age Groups



Distribution of deaths by Governorates



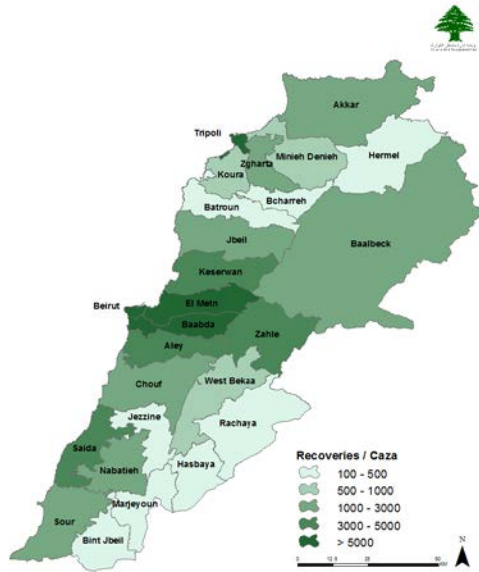
Distribution of mortality rate for the last 14 days



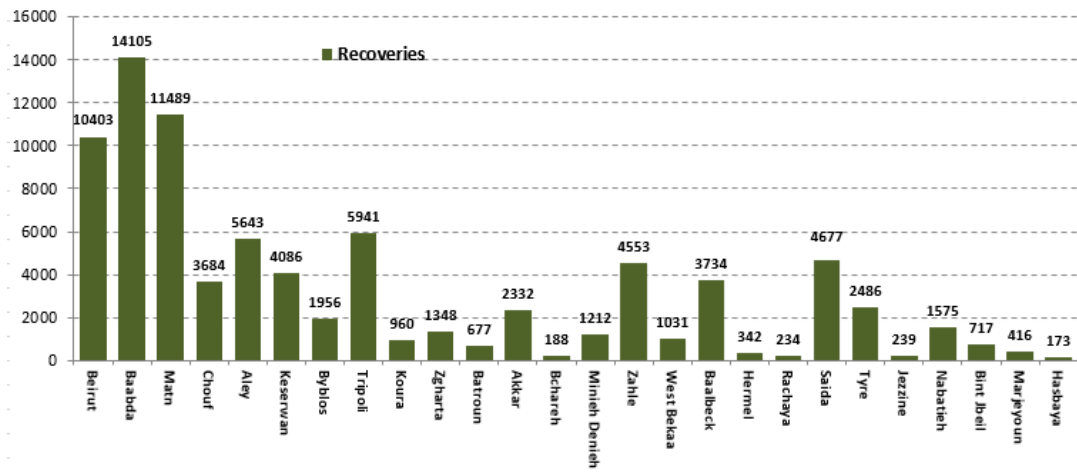
All reports and related decisions can be found at: <http://drm.pcm.gov.lb>

Or social media @DRM_Lebanon

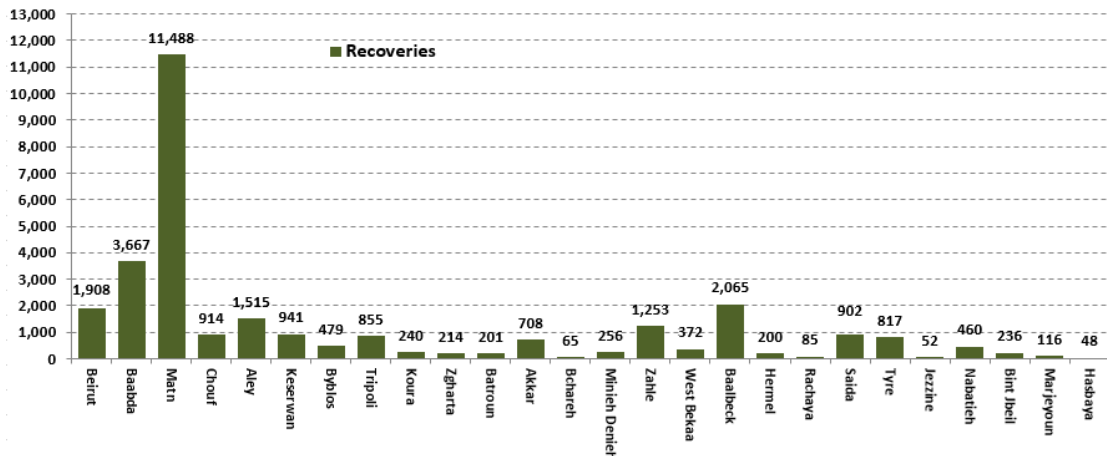
Distribution of Recoveries



Distribution of Recoveries per Casa



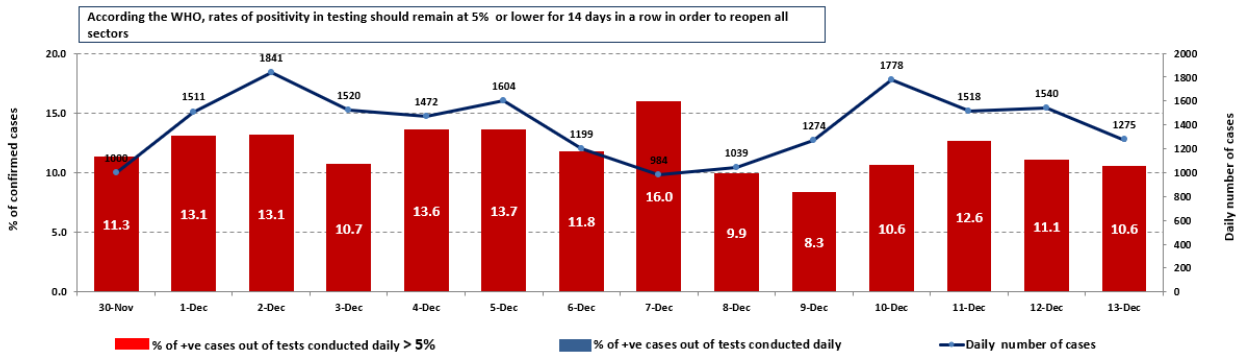
Distribution of Recoveries per Casa in the last 14 days



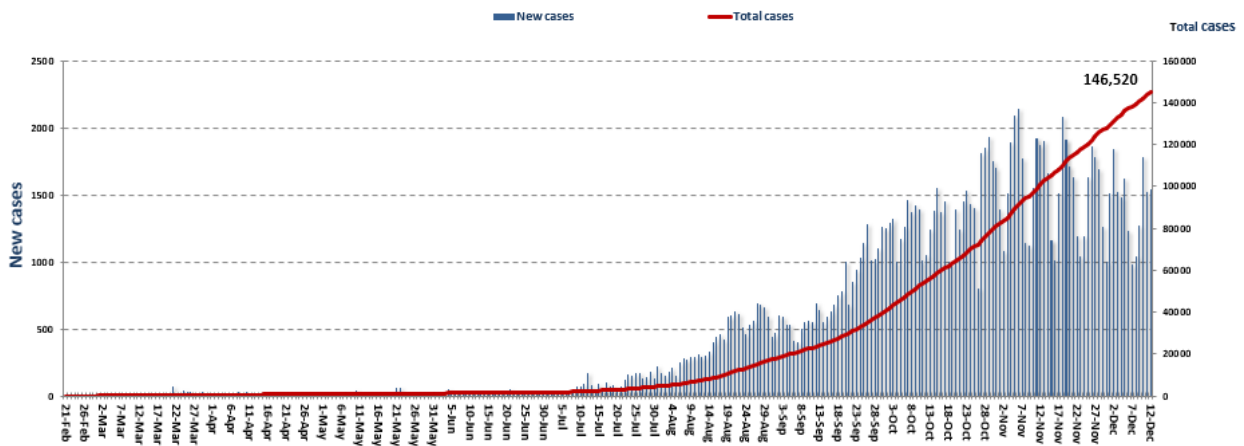
All reports and related decisions can be found at: <http://drm.pcm.gov.lb>

Or social media @DRM_Lebanon

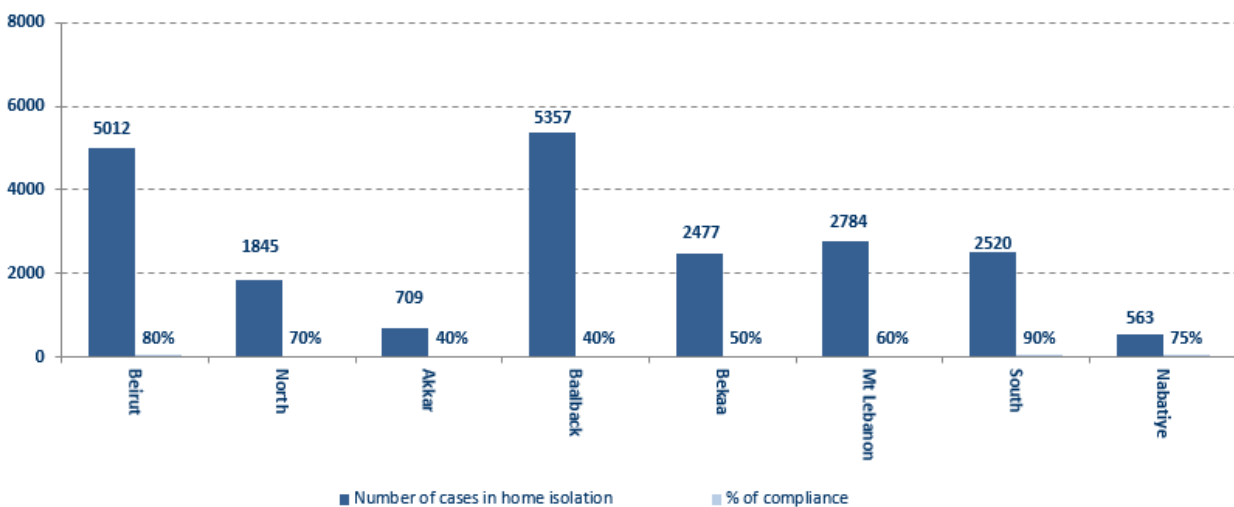
The percentage of positive cases out of the number of daily tests (30 Nov– 13 Dec,2020)



Cumulative cases per day



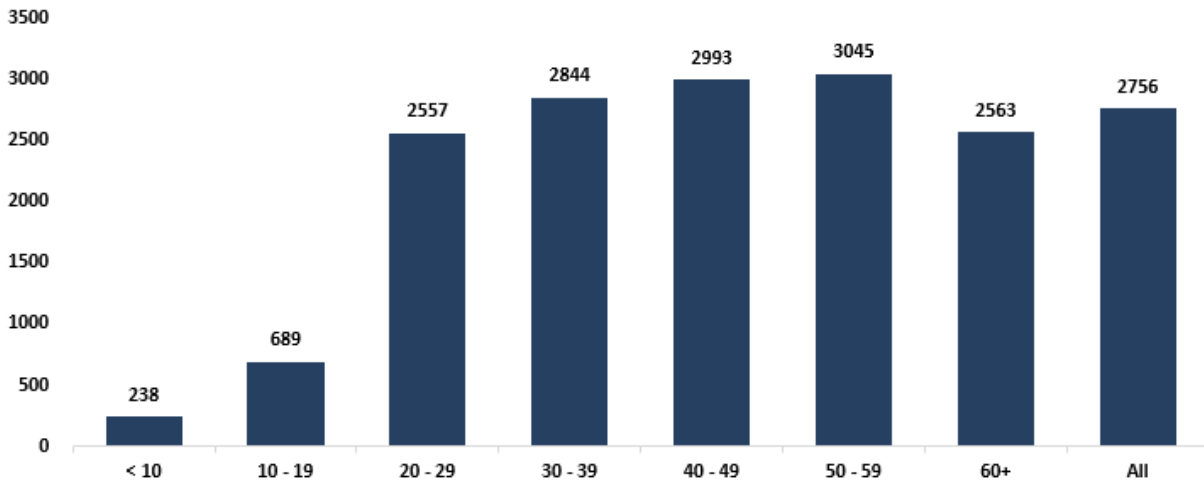
Number of individuals in home isolation and percentage of commitment to isolation



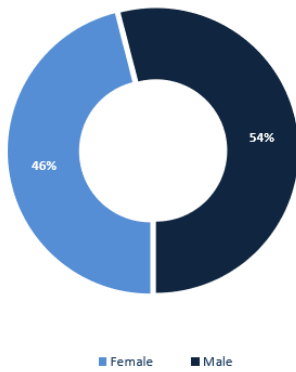
All reports and related decisions can be found at: <http://drm.pcm.gov.lb>

Or social media @DRM_Lebanon

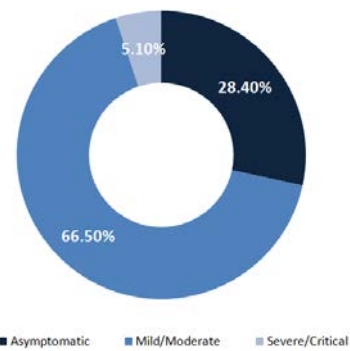
Age-Specific Cumulative Incidence rate (/100000)



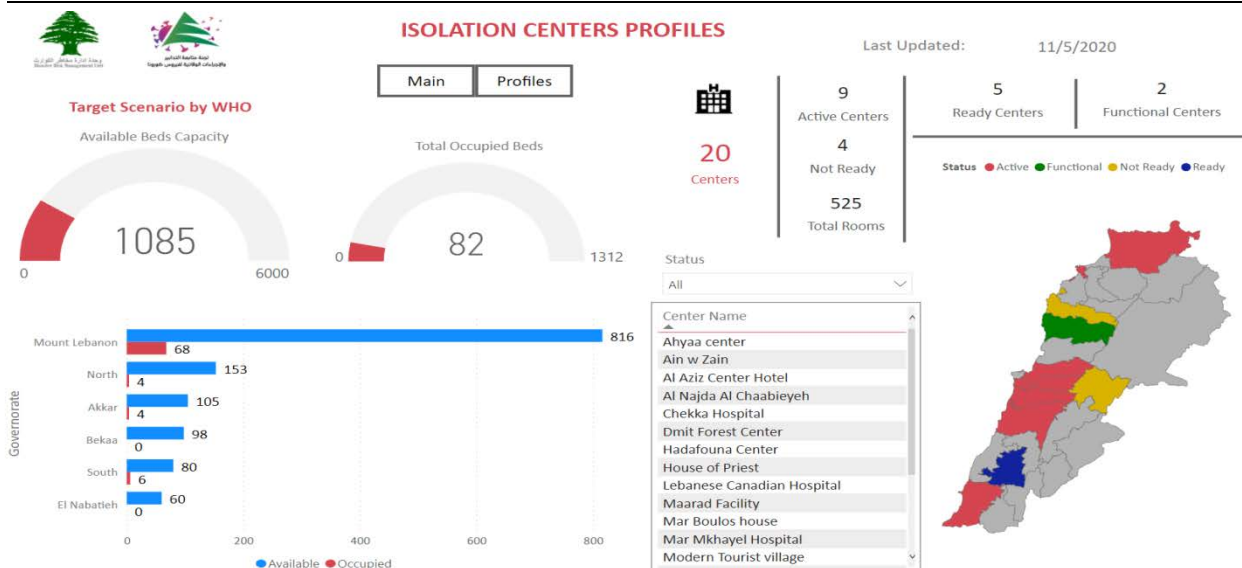
Distribution of cases by gender



Distribution of cases by Status



Occupancy rate of isolation centers for cases infected with Corona virus



All reports and related decisions can be found at: <http://drm.pcm.gov.lb>

Or social media @DRM_Lebanon

For more information about the isolation centers' distribution and the percentage of their occupancy, enter the following link: <http://bit.ly/DRM-IsolationCentersProfiles>

Decisions and actions taken – 12/13/2020

Ministry of Public Health

- An expanded evaluation meeting was held at the Ministry of Health, which included the Minister of Public Health and representatives of the World Health Organization, where a representative of the latter stated that "the evaluation It is positive that Lebanon has shown good performance despite its extremely difficult circumstances. "At the same time, a number of measures to be implemented were identified.
The next stage to cope with the increasing numbers of injuries

Destination	Number of cases	Flight Number	Company
N/A			

Lebanese Red Cross

Cases transferred to the hospital	10,139 (61 New)	Ambulance centers	48	Number of additional ambulance centers ready to respond	59,903	Number of PCR tests transferred to laboratories	240,171
Number of being benefitting from awareness sessions	116,175 (1,591 New)	total number of respondents	8,881	Number of trained paramedics	1,498	Number of volunteers trained to transfer PCR tests	166
Number of trained managers for isolation centers	8,839	total LRC volunteers for covid 19	550	Number of university volunteers trained to conduct awareness sessions	310	The number of university volunteers trained to follow up on prevention measures in companies and institutions	967
Number of prisons that has been disinfected	1,011	Total distributed posters, brochures, and flyers on covid19 prevention	1,261,982	Number of distributed equipment	263,876	Number of beneficiaries from educational electronic platforms COVID-19	4,786 (2 New)

Lebanese Army Forces

- The army units continue to distribute social aid (400,000 Lebanese pounds) to families with limited income in all Lebanese territories.
- Distributing food aid in various Lebanese regions through the CIMIC Office.
- Establishing circumstantial barriers in various regions and supporting the Internal Security Forces in implementing the general closure decision in the country

General Directorate of Internal Security Forces

- The Internal Security Forces in all governorates and regional directorates organized patrols and circumstantial checkpoints
- The minutes that were written against the violators of the decisions of the general mobilization during the past 24 hours were distributed as follows:

All reports and related decisions can be found at: <http://drm.pcm.gov.lb>

Or social media @DRM_Lebanon

The number of seizure records during the past 24 hours					The total number of records since 03/08/2020			
Written records of cars that violate curfew decision					7			
Written records of violating institutions					65			
Written records of persons violating the decision to wear a mask					279			
Total					351			
Beirut		Mount Leb		Beqaa		North		
175		143		8		11		
				South		South		
				14		13,116		
					Total		121,069	

General Directorate of State Security

- Reporting the number of new positive cases in the various governorates and districts, and the cases in home quarantine.
- Follow up the procedures performed by medical teams at the arrival's examination centers at the airport and at border crossings.
- The report of a death in a woman in the Batroun district due to the Corona virus.
- Reporting on the decision of the North Lebanon Governor to isolate the town of Kfardelkous for a period of one week, starting December 10, 2020

General Directorate of General Security

- Carrying out patrols in the various governorates to follow up on the implementation of the general mobilization decision and alerting citizens to abide by preventive measures.
- Reporting that a large number of commercial establishments did not adhere to the preventive measures.
- Reporting the cumulative number of positive cases in the districts.
- Notification of the percentage of compliance with the general mobilization decision in the governorates, which came as follows within the past 24 hours:

Beirut	South	North	Akkar	Beqaa	Nabatiyeh	Baalbek Hermel	Mount Leb
75%	55%	45%	50%	50%	50%	50%	55%

Ministry of Public Works and Transportation

Beirut Rafic Harriri International Airport:

Departing Flights		Arriving Flights	
Number of Flights	46	Number of Flights	45
Number of Departing Individuals	3,988	Number of Arrivals	5,274

Ports:

Port	Left			Entered		
	Export	Direction	#	Import	Direction	#
Beirut	Containers	Tartous	1	Containers	Alexandaria	1
Tripoli				Containers	Lazqyeih	1
Jouneih				Gasoline	Beirut	1
Jbeil	Diesel	Anfeh	1			
Total			2			3

General Decisions / Announcements

On 12/13/2020, the Ministry of Interior and Municipalities issued Resolution No. 1556 regarding the amendment of preventive measures and measures to confront the Corona epidemic, as it begins to be applied from the morning of 12/14/2020 until the morning of 12/21/2020, and the most prominent of what was mentioned in it:

- Determine the times of entry and entry into the streets between 23:30 until 5:00 in the next morning.
- Transport instructions for private and public vehicles and trucks.
- Opening times for the public sector and the economic and commercial sectors in all Lebanese regions.
- Allowing the holding of various social events under specific conditions, in addition to coordinating with the religious authorities in terms of organizing and determining the number of worshipers in places of worship.
- Setting specific conditions that allow restaurants, cabarets and bars to operate.
- Limiting the decision to open or close educational institutions and administrative units in all towns and villages to the Minister of Education and Higher Education.
- General provisions related to the numbers of people traveling by specific public and private means of transport, public prevention and safety measures, mandatory wearing of a mask, personal hygiene and especially hand washing, permanent sterilization and not overcrowding while maintaining distances between people and organizing roles on payment boxes.
- Exclusions related to movement and curfews (military personnel, health sector employees, workers in the diplomatic corps, media professionals, port employees, maritime agencies and the airport, in addition to the Electricity of Lebanon and Kadisha, water establishments and their service providers, mill workers, sweeping companies, waste collection and transportation, military vehicles, civil defense mechanisms, firefighting, municipal police and the cross) The Lebanese Red Army, ambulances and medical apparatus, the diplomatic corps, the United Nations, the media and the media, the lifts and the vehicles designated for transporting and towing cars, the vehicles designated for people with special needs and those with a card from the Ministry of Social Affairs, arrivals and departures, and those who take them to and from the airport, provided they have a copy of the travel ticket.
- The mandates of governors, mayors and district officials in implementing the decision.
- The units of the General Directorate of Internal Security are strict in implementing this decision.

The Committee for the Follow-up of Preventive Measures and Procedures for the Coronavirus held a meeting on 10/11/2020 under the chairmanship of the Secretary-General of the Supreme Defense Council, and it issued the following recommendations:

- Cooperation between the Ministry of Public Health and the World Health Organization in order to address the issue of regular bed occupancy and intensive care beds (COVID hospitalization and outcome registry)
- To suggest that bars operate with a restaurant concept, and nightlife establishments of all kinds abide by the following preventive and safety measures:
 - Reducing the carrying capacity to 50% after emptying the chairs and tables, and the Ministry of Tourism signing the plan to ensure social distancing and not overcrowding
 - Maintaining two meters between tables
 - Allowing a maximum of 6 to 8 people to sit at each table with the use of sterilizers
 - Dancing is strictly prohibited
 - Banning candles and candy bars for birthdays or any other occasion
- Allowing social events of all kinds in open and closed places, provided that 50% of occupancy is adhered to and that the number of attendees does not exceed 100 persons. Event organizers must also fill out the form on eventregistry.net, where event organizers receive a letter containing the preventive measures and procedures to be followed as a document requiring compliance and presenting it upon request.
- Institutions are obligated to implement the procedures, and the Syndicate of Restaurant, Café, Cabaret and Patisserie Owners in Lebanon, cabaret owners, musicians and artists undertakes to monitor the proper implementation and report to the committee any violations so that they can be addressed.
- Note: The full decision can be found at: <http://drm.pcm.gov.lb>

Examples of lack of adherence to safety measures

- Violations of the Ministry of Interior Decision No. 1432: promenade on the sea corniche, violations of authorized and single motor vehicle traffic, and violations of commercial establishments and stores that did not adhere to the decision.
- Failure to comply with the preventive measures and procedures required in a number of stores and markets (putting on a mask or face mask, sterilizing hands, maintaining a safe distance).
- Failure of those in contact with confirmed cases to adhere to home isolation procedures until the results of the laboratory tests are issued.

If you feel any symptoms, directly call the hotline of the Ministry of Public Health: 1214 or 01/594459

Laboratories that did not comply with the procedures approved by the MoPH About the information required to be recorded for infected cases within the past 24 hours

Laboratories that did not specify the Governorate	
Laboratory/Hospitals	Cases
BDL003-Laboratoire Inovie / Fayyadieh	73
BDL006 - Beirut International Airport	24
BDL002-Hadi Laboratory/ Haret Hreik	15
ZHH202-Hospital Elias Hraoui Gouvernemental	4
BRL009 - Fontana Laboratories	3
BDH558-Hospital Saint Georges Hadath	2
BRH636-Hospital LAU Medical Center / Rizk	2
BDH558-Hospital Rassoul Aazam	1
MTH510-Hospital Abou Jaoudeh / Jall Dib	1

Number of positive cases without specifying the place of residence	
Laboratory/Hospitals	Cases
BDL003-Laboratoire Inovie / Fayyadieh	79
BDL006 - Beirut International Airport	24
BDL002-Hadi Laboratory/ Haret Hreik	19
BDL005 - American Diagnostic Center ADC	8
ZHH231-Hospital Tel Chiha / Zahleh	8
ZHH202-Hospital Elias Hraoui Gouvernemental	6
BRL009 - Fontana Laboratories	3
BDH558-Hospital Saint Georges Hadath	2
BRH636-Hospital LAU Medical Center / Rizk	2
JBL001-Laboratoire Akiki et Boulos	2
BDH558-Hospital Rassoul Aazam	1
KWL001 - Wakim Laboratories	1
MTH510-Hospital Abou Jaoudeh / Jall Dib	1
BDL003-Laboratoire Inovie / Fayyadieh	79
BDL006 - Beirut International Airport	24

Number of positive cases without a phone number	
Laboratory/Hospitals	Cases
BDL002-Hadi Laboratory/ Haret Hreik	5

A list of the laboratories accredited by the MoPH to conduct PCR tests

Governmental Labs

المختبر	الموقع
RHUH	بيروت
Halba Governmental	حلبا
Tripoli Governmental	طرابلس
Batroun Governmental	البترون
Fetouh Keserwan	كسروان
Nabih Berri Hosp	النبطية
Tebnine Governmental	تبنين
BintJbeil Governmental	بنت جبيل
Baalback Governmental	بعلبك
Elias Herrawi Governmental	زحلة

Private Labs

المختبر	الموقع
AUBMC	بيروت
Hôtel Dieu de France	بيروت
Laboratoires Rodolphe Mérieux (Université Saint-Joseph)	بيروت
George-Saint UMC Hospital	بيروت
General Makassed Hospital	بيروت
LAU Medical Center - Rizk Hospital	بيروت
CHU - Geitawi Libanais Hospital	بيروت
Hôpital Notre-Dame du Rosaire	بيروت
Doctors' Center	بيروت
Fontana Laboratories	بيروت
General Security Laboratories	بيروت
Ghorra-Jabre Laboratories	الأشرفية
Saint Marc Medical & Diagnostic Center	الأشرفية
Laboratories HML	فرن الشباك
Laboratoire Moderne (Modern Lab.- Berjaoui)	الغبيري
Sahel General Hospital (SGH)	الغبيري
Al Zahraa Hospital	الغبيري
	بئر حسن
Al Rassoul Al Aazam Hospital	برج البراجنة
Bahman Hospital	حارة حريك
National Diagnostic Services Company (NDSC)	حارة حريك
Center Diagnostic Medical	المريجة
ADC (Center Diagnostic American)	الجناح
Mount Lebanon Hospital	بعيدا
Hadath - George-Saint Hôpital	بعيدا
Laboratory Al Hadi	بعيدا
INOVIE	بعيدا
Sacré - Coeur Hôpital	الحازمية
Clinigene	الحازمية
Dr. Samir Serhal Hospital	المتن
Life for Trans medical	المتن
	المتن

All reports and related decisions can be found at: <http://drm.pcm.gov.lb>

Or social media @DRM_Lebanon

المتن	مختبر مركز الشرق الأوسط الصحي ش.م.ل
الزلقا	مستشفى هارون
المنصورية	مستشفى بلفو
الكورة	مستشفى هيكل
زغرتا	مركز الشمال الاستشفائي
طرابلس	مستشفى المظلوم
طرابلس	مستشفى المنلا
طرابلس	مستشفى النيني
طرابلس	مختبر ميكروبيولوجيا الصحة والبيئة، المعهد العالي للدكتوراه، الجامعة اللبنانية
جبيل	مستشفى سيدة المعونات الجامعي
جبيل	مختبر عقيقي وبولس
جونية	مختبر واكيم
الشوف	مستشفى عين وزين
صيدا	مستشفى حمود الجامعي
صيدا	مختبر الكريم
النبطية	مستشفى الشيخ راغب حرب
النبطية	مختبر الصباح
صور	مستشفى جبل عامل
صور	مختبر المشرق
بعلبك	مستشفى دار الأمل الجامعي
بعلبك	مختبرات العناية الطبية
اللبوة	مختبرات العناية الطبية
زحلة	مستشفى خوري
زحلة	مختبر ميديكال كير سنتر

مختبرات المستشفيات العسكرية

بيروت	المستشفى العسكري المركزي في بيروت	Hôpital Central Militaire
-------	-----------------------------------	---------------------------

المختبرات المؤهلة لأخذ عينات "المسحات الأنفية" بطريقة Drive-Thru

بيروت	مختبر ميديكال دياغنونيك تريمانت سنتر (الحمراء)	Medical Diagnostic Treatment Center (MDTC)
بيروت	مختبر ميد لاب الحمراء – الجفینور	ALS CIC SAL Med-Lab
بيروت	مختبرات عيتاني	Itani Medical Laboratories
الأشرفية	مختبر أ ب سي	ABC Laboratories
الشيح	مختبرات معوض الطبية	Mouawad Medical Laboratory
الشيح	مختبرات الشياح (د. فؤاد ریحان)	Rihan Medical Center
المنصورية	مختبر إكسبرت لاب	Lab Expert
بعلبك	مختبر لايف لاب	LAB Life
ریاق	مستشفى ریاق	Rayyak Hospital