





## Lebanon National Operations Room Daily Report on COVID-19

Monday, October 12, 2020

Report #208

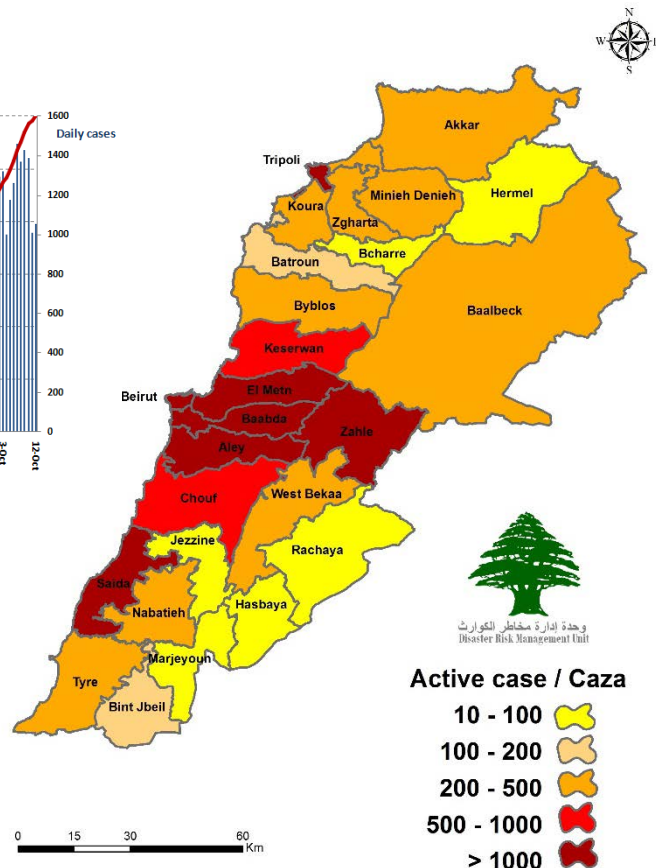
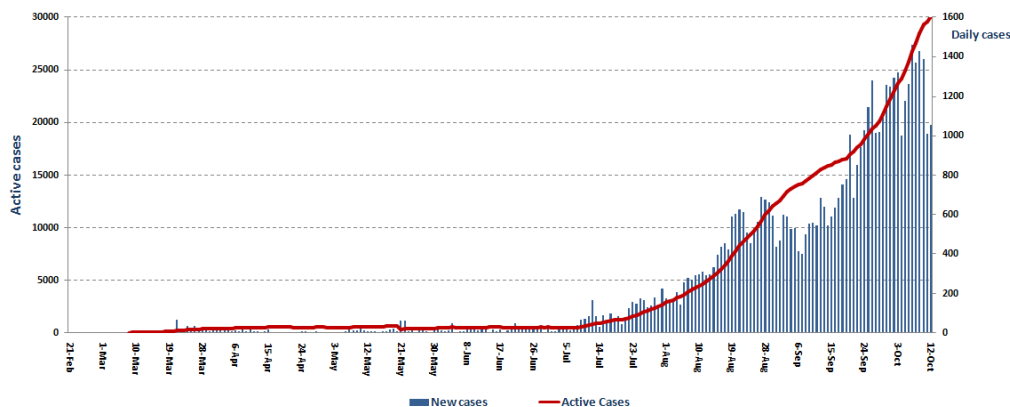
Time Published: 10:30 PM

<b>1,056</b> New Cases		<b>53,624</b> Total Cases since 21.2.2020		<b>466</b> Total Deaths		<b>23,941</b> Total Recovered	
1,046 Residents	10 Expats	52,853 Residents	1,771 Expats	7 New Deaths		540 New Recovered	
<b>1,198</b> Total Cases in the Health Sector		<b>30,217</b> Total Active Cases		<b>642</b> Hospitalized Cases		<b>185</b> Total Cases in ICU	
6 New Cases in the Health Sector		29,575 Cases in Home Isolation		457 Mild Cases		9 New Cases in ICU	
<b>932,461</b> COVID-19 Tests since 21.2.2020		Lebanon Status compared to the World					
1,180 COVID-19 Tests at Airport within 24 hrs.		4,091 COVID-19 tests for residents within 24 hrs.		Total Cumulative		54,624	
				Total Deaths		466	
				Deaths percentage		0,85%	
				Total recoveries		23,941	
						37,918,489	
						1,083,662	
						2.85%	
						28,484,812	

Ref: Ministry of Public Health Data

### Number of Cases by Location

- 9,696 case is Under investigation



Beirut	72
Manara	4
Qreitem	1
Raouche	1
Hamra	9
Mseitbeh	2
Mar Elias	3
Zarif	1
Mina El Hosn	1
Mazraa	8
Borj Abi Haidar	2
Basta Fawka	2
Rtariq Jdeedeh	10
Ras Al Nabaa	2
Gemmayze	1
Ashrafieh	2
Others	23
Baabda	116
Chiah	7
Jnah	5
Ouzai	2
Bir Hassan	5
Ghobeiry	1
Ein Rimmaneh	4
Forn Al Shubbak	1
Haret Hreik	16
Lailaki	3
Borj AL Barajneh	26
Mreijeh	4
Tahweetet AlGhadir	5
Baabda	10
Hazmieh	3
Fayyadie	1
Hadat	16
Kfarshima	3
Abadie	1
Others	3
Byblos	46
Byblos	8
Mastita	1
Blat	3
Eddeh	1
Amshit	5
Kour Al Hawa	1
Jedayel	2
Nahr Ibrahim	1
Annaya	2
Kharbeh	1
Fetry	2
Bentael	1
Hboub	2
Gherfeen	2
Others	14
Jezzine	2
Ein El Meer	1
Shwaleeq	1

Kesrwen	95
Sarba	7
Kaslik	4
Zouk Michael	8
Ghadir	5
Zouk Mosbeh	8
Adonis	6
Haret Sakhr	4
Sahel Alma	3
Kfaryassine	2
Adma & Dafneh	3
Safra	2
Bouar	2
Ajaltoun	7
Ballouneh	6
Sehaileh	1
Ein Al Rihany	3
Jeita	1
Ghazir	2
Maameltein	1
Kfarhbab	1
Chnaniir	2
Ghosta	1
Bzommar	1
Reifoun	1
Ashkout	2
Feitroun	4
Raasheen	1
Mayrouba	1
Hrajel	2
Others	4
Saida	123
Wostany	1
Hlalieh	6
Qayaaa	1
Haret Saida	6
Miyyeh W Miyyeh	2
Ein Al Helwe	12
Salhie	1
Majdlyoun	12
Abra	5
Bqosta	1
Ein Al Delb	1
Ghazieh	1
Maghdoushe	3
Arzy	1
Khrayeb	2
Zrarieh	4
Ansarieh	1
Bablieh	1
Mazraet Qrayyeh	1
Sarafand	6
Bisarieh	1
Hajjeh	1
Kfarhatta	1
Others	52

Chouf	47
Damour	1
Naameh	2
Haret Naameh	2
Chhim	3
Mazboud	2
Anout	2
Barja	2
Baasir	1
Jiyyeh	3
Jadra	1
Wady zayne	1
Alman El Dayaa	1
Wedaniyeh	3
Behstaffine	2
Kfarheem	2
Maaqleen	3
Einbal	1
Jahlieh	2
Hasrout	1
Ein Qana	1
Baqata	2
Ein W Zein	1
Btalloun	1
Jbaa	1
Barouk	1
Others	5
Aley	59
Amroussieh	1
Hay Sillom	9
Khaldeh	6
Al Oumara	7
Deir Qoubel	2
Aramoun	6
Mouwenseh	2
Bshamoun	10
Bleibel	1
Aley	7
Ein Hala	1
Qmatieh	1
Aabayh	1
Btater	2
Mreijat	1
Others	2
Bint Jbeil	9
Rmeish	1
Shakra	1
Heddatha	1
Harees	4
Kouneen	1
Borj Kalawayh	1
Hasbayya	6
Hasbayya	3
Habbarieh	1
Others	2

Matn	98
Borj Hammoud	9
Sin El Fil	5
Jdeidet I Metn	3
Bouchrieh	3
Dora	1
Rawda	1
Sed Bouchrieh	5
Sabtieh	1
Dekwene	3
Antelias	4
Jal Al Dib	2
Naqqash	2
Zalka	3
Byaqout	1
Dbayyeh	2
Mansourieh	5
Fanar	2
Roumieh	3
Bsalim	2
Mteileb	2
Beit AL Chaar	3
Deek Al Mahdi	1
Mar Youssef	1
Mazrt Yashouh	5
Zikrit	4
Qornetl Hamra	5
Broummana	2
Beit Merry	2
Mrouj	1
Marjaba	1
Aintoura	2
Dhour Shweir	1
Baskinta	1
Others	10
Byblos	46
Byblos	8
Mastita	1
Blat	3
Eddeh	1
Amshit	5
Kour Al Hawa	1
Jedayel	2
Nahr Ibrahim	1
Annaya	2
Kharbeh	1
Fetry	2
Bentael	1
Hboub	2
Gherfeen	2
Others	14
Tripoli	39
Qebbeh	1
Zahrieh	2
Mina El Hosn	20
Beddawy	1
Others	15

Tyre	50
Bass	3
Rasheedieh	2
Sour Maashouk	1
Borj Shemaly	6
Qana	2
Maarakeh	1
Rashkananieh	1
Seddeeqeen	1
Bazourieh	1
Chehabiyyeh	1
Tora	3
Qanoun Al Nahr	1
Sreefa	1
Jbal El Botom	1
Zebqeen	1
Alma Al Shaeb	1
Others	23
<b>Western Beqaa</b>	<b>10</b>
Mashghara	2
Kherbet Kanafar	1
Khyara	1
Old Khyara	1
Hoch Al Hareemeh	2
Marej	2
Others	1

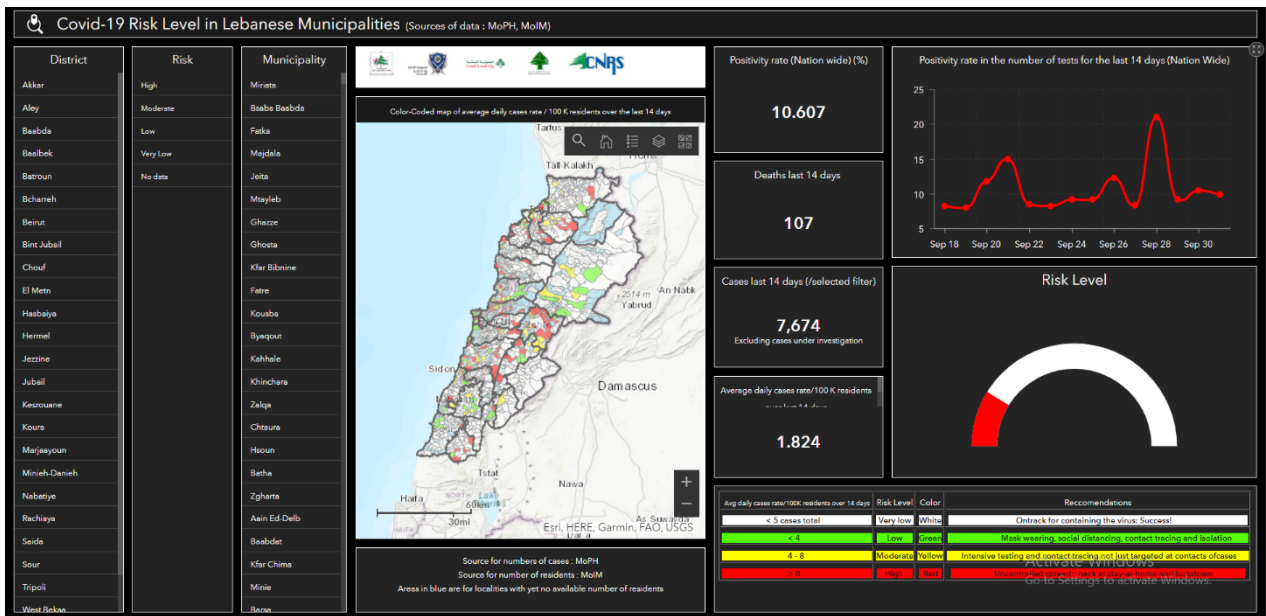
Koura	9
Kfarhata	1
Anfeh	2
Ras Masqa	2
Dahr Al Ein	1
Barsa	2
Others	1
<b>Akkar</b>	<b>12</b>
Abboudieh	1
Nahr Al Bared	1
Abdeh	1
Qabeet	1
Ayoun Al Ghezlan	1
Meshmehs	2
Fneidek	1
Majdala	1
Others	3
<b>Baalbek</b>	<b>10</b>
Baalbek	1
Younin	1
Bednayel	3
Hoch Al Rafqa	1
Temnin Al Tahta	2
Falaway	2
<b>Mareyoun</b>	<b>7</b>
Ebel Al Saqy	1
Kleiaa	1
Khiyam	1
Adaysseh	1
Mays Al Jabal	1
Souwaneh	2

Zahle	29
Hoch Zaraanah	1
Berbara	1
Maallaqa	4
Hoch Al Oumara	4
Ferzol	1
Haql Hammana	1
Ablah	1
Ksara	2
Makseh	2
Taalabaya	4
Jdita	2
Qab Elias	1
Hoch Mandra	1
Bar Elias	2
Others	2
<b>Batroun</b>	<b>13</b>
Batroun	3
Herry	1
Smar Jbeil	1
Ortaz	1
Bajderfel	1
Kfarhelda	1
Others	5
<b>Rashayya</b>	<b>4</b>
Bekfayya	1
Dahr Al Ahmar	1
Kherbet Rouha	1
Rafeed	1

Nabatieh	23
Nabatieh Tahta	1
Mazraet Kfr Joz	1
Kfarrimman	2
Habboush	1
Houmen Fwka	1
Arab Salim	1
Sharkieh	2
Toul	1
Nmeirieh	4
Abba	2
Ansar	2
Qaqaiyyet Jesr	1
Kfar Seer	1
Yuhmor	1
Others	2
Bcharre	2
Bcharre	1
Ballouza	1
Menah Dunyyh	1
Deir Amar	1
<b>Zghorta</b>	<b>7</b>
Zghorta	3
Alma	1
Mezyara	2
Others	1

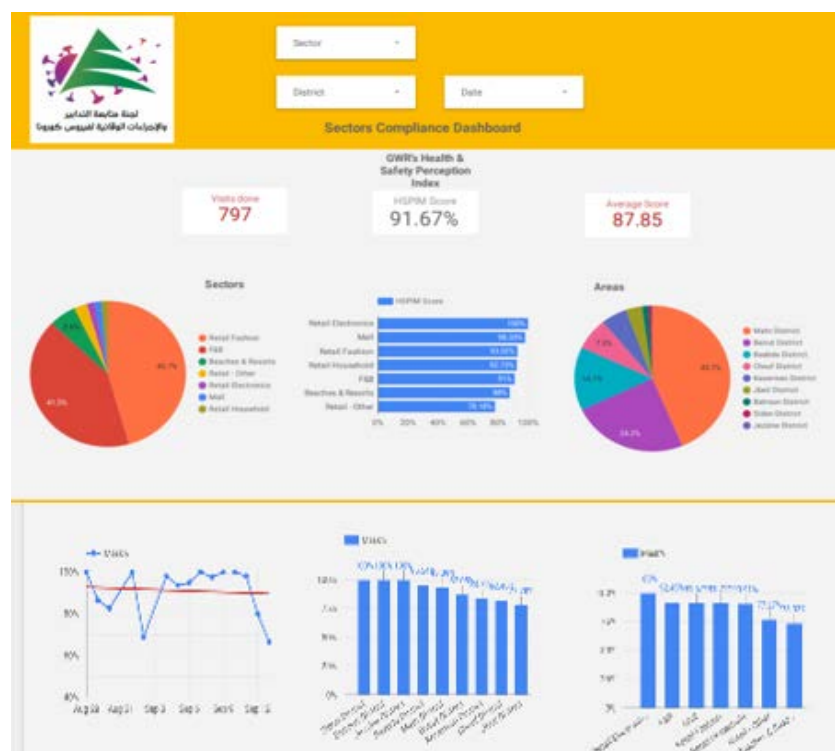
Others	167
--------	-----

### The Online platform to measure the level of risk of the spread of the new Corona virus



<https://bit.ly/DRM-RiskLevelInMunicipalities>

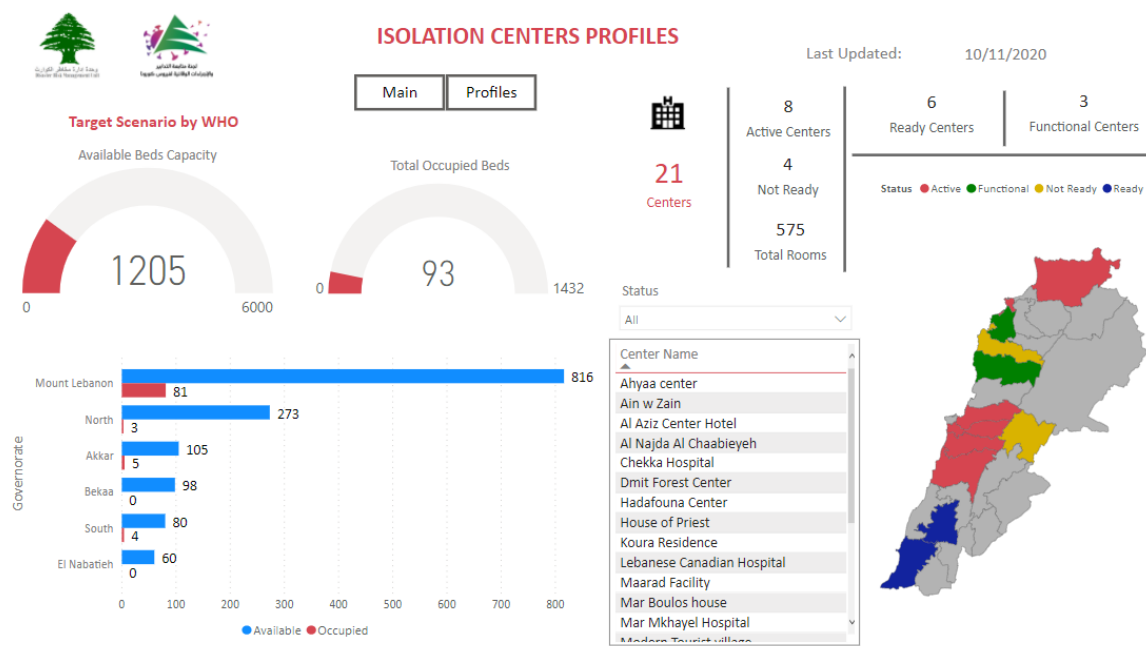
## Online platform to track sector commitment in general mobilization procedures



Based on the recommendation issued by the National Committee for Follow-up of Preventive Measures and Measures to Confront the Coronavirus to open all sectors, provided that the general mobilization procedure (safe distance, muzzle, and hand sterilization) be applied, a special electronic platform was created that allows monitoring and measuring the percentage of commitment by various sectors on an ongoing basis. The detailed results can be viewed directly at the following link:

<http://bit.ly/covidsectordata>

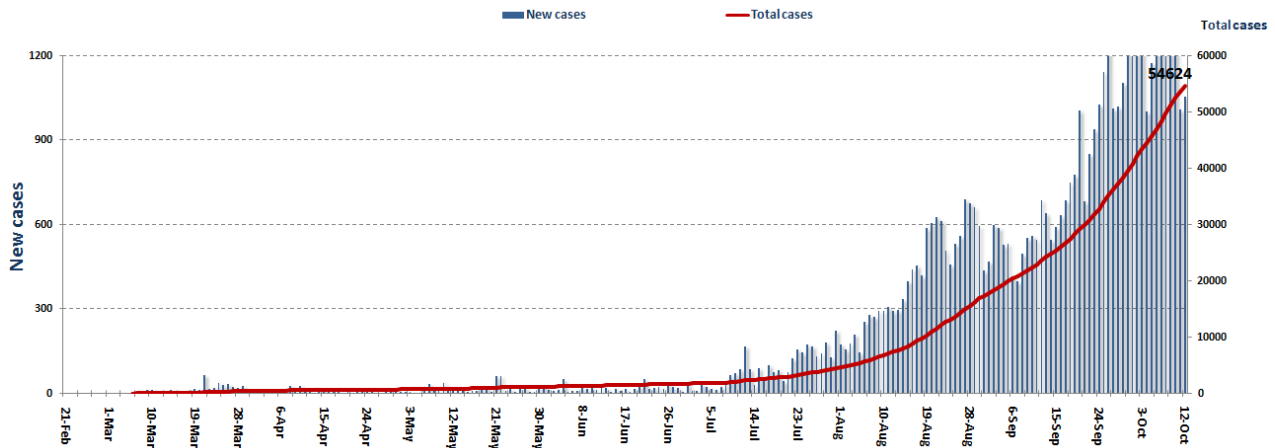
## Occupancy rate of isolation centers for cases infected with Coronavirus



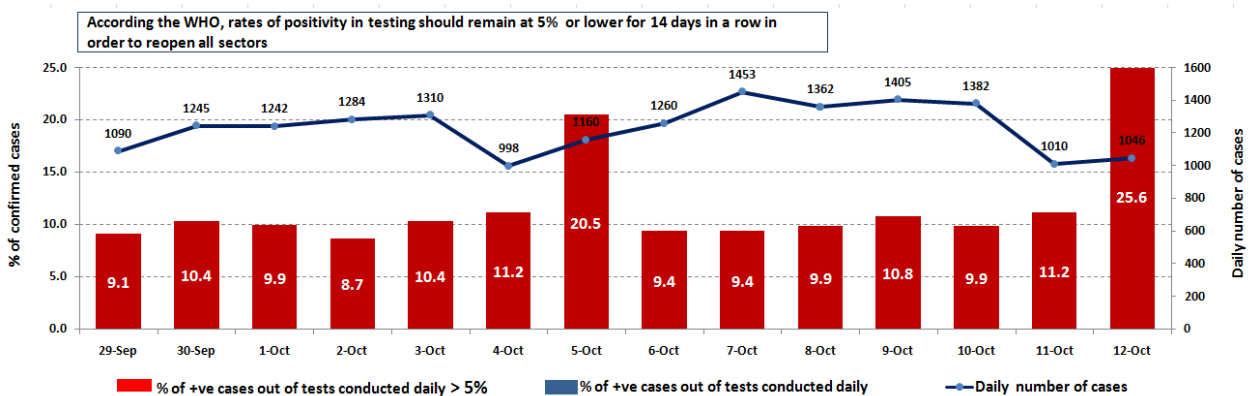
For more information about the isolation centers' distribution and the percentage of their occupancy, enter the following link: <http://bit.ly/DRM-IsolationCentersProfiles>

Note: These centers have been equipped in cooperation between the National Committee for Follow-up of Preventive Measures and Measures to Confront the Coronavirus and Governors and Municipalities, the United Nations Development Program, the World Health Organization, UNICEF, the Ministry of Public Health, the Syndicate of Nurses in Lebanon and the Syndicate of Specialists in Social Work.

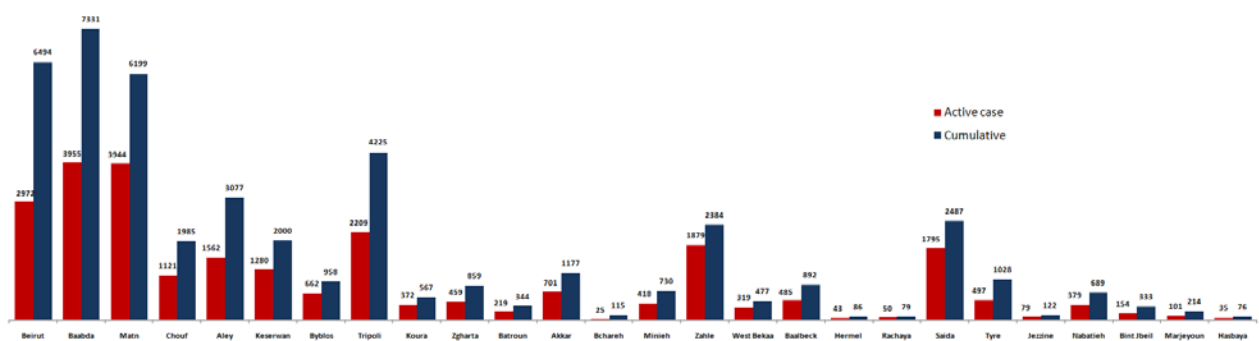
## Cases per day



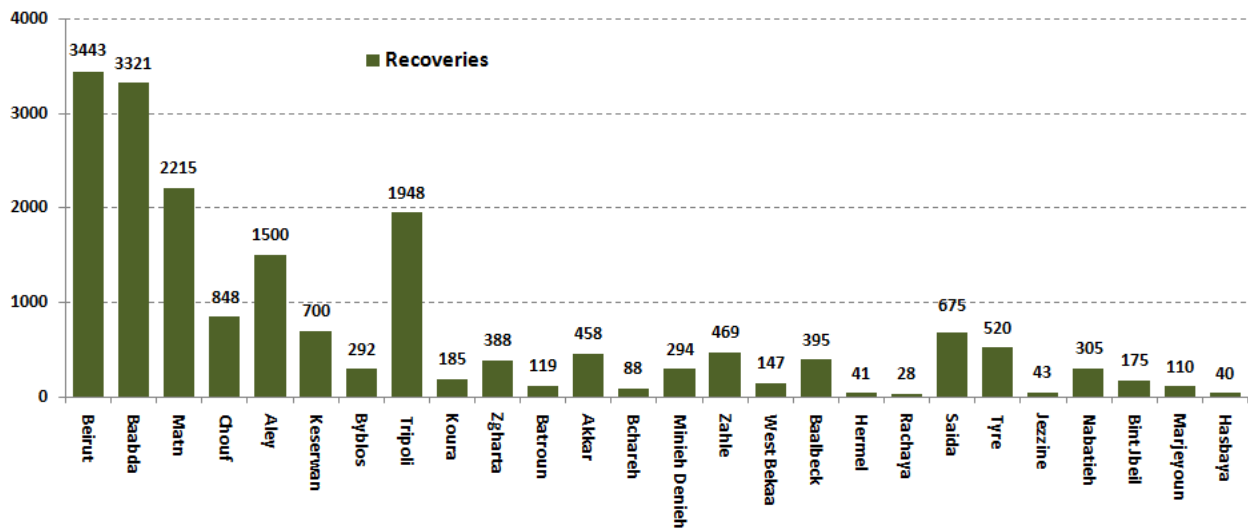
## The percentage of positive cases out of the number of daily checks (29 September to 12 October 2020)



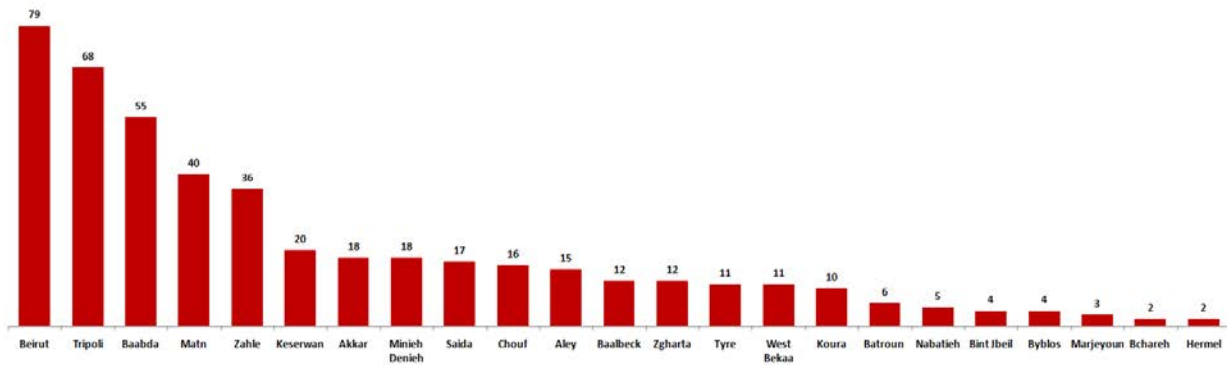
## Distribution of Active Cases by Districts



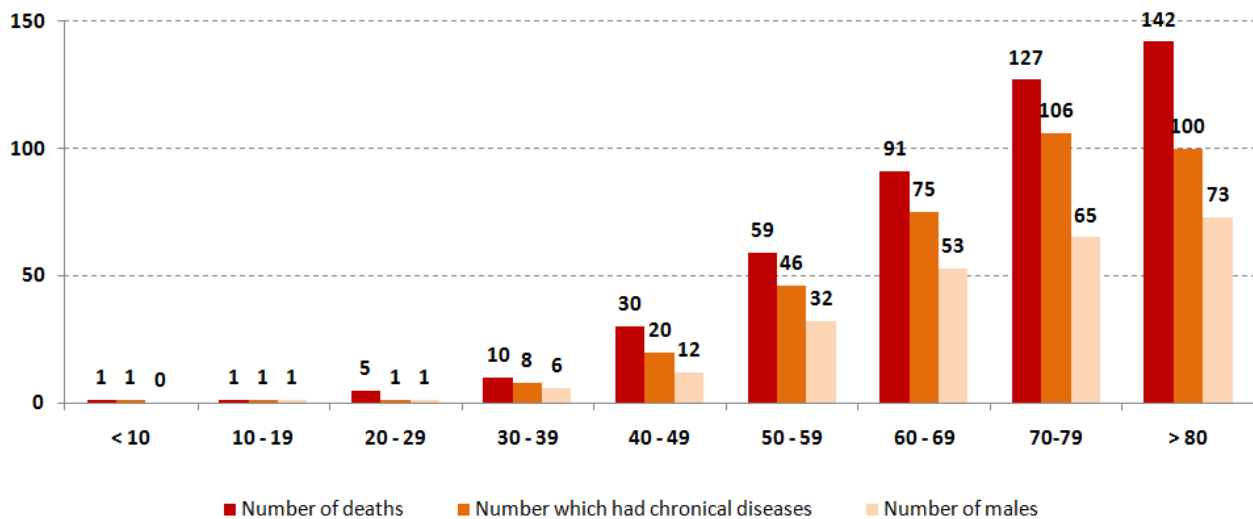
## Recoveries



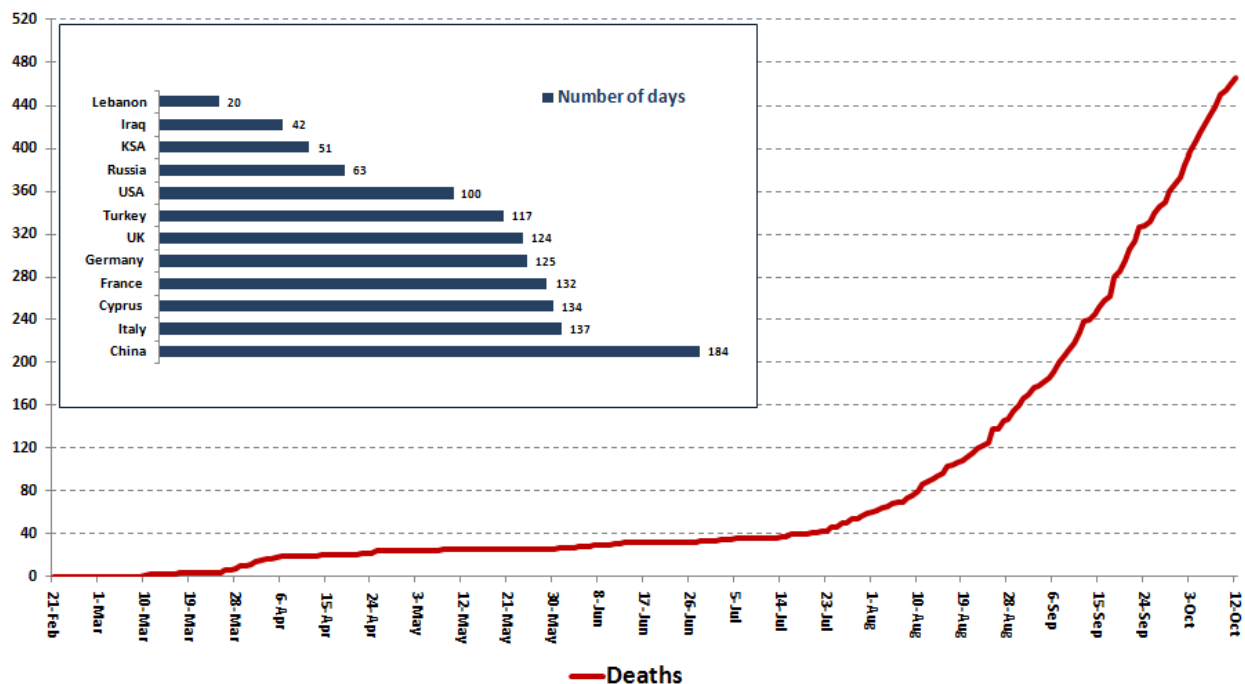
## Distribution of deaths by Governorates



## Distribution of deaths by Age



## Comparison of the rate of doubling of the number of deaths in Lebanon with other countries (death doubling rate)

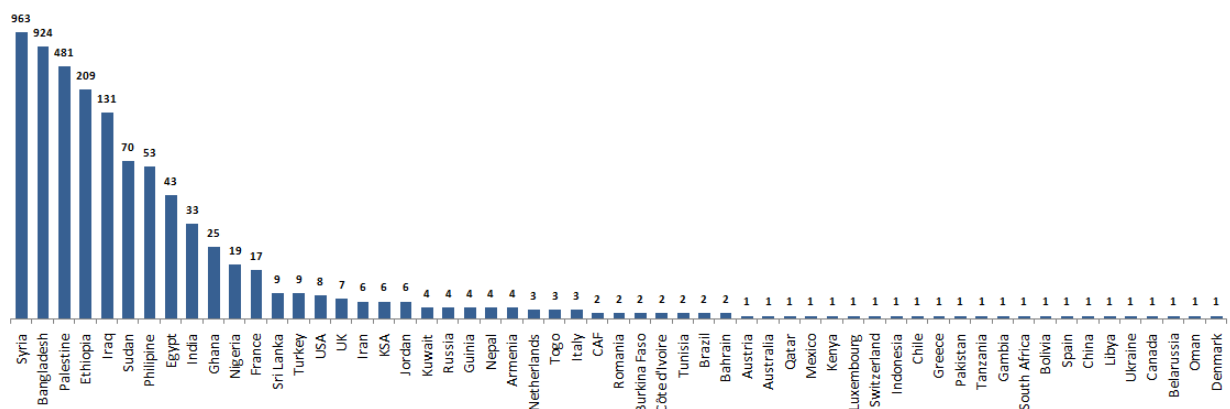


## The distribution of the recorded deaths during the past 24 hours

Hospital	Residence	Gender	Age	Chronic
Tripoli Gov.	Zgharta	Male	56	Yes
Haykal	Minieh denieh	Male	77	Yes
Harire Gov.	Zahle	Female	48	Yes
Harire Gov.	Baabda	Female	78	Yes
Hermel Gov.	Baalback	Male	84	Yes
Herawi Gov.	Zahle	Male	48	Yes
Saint George	Baabda	Male	88	Yes

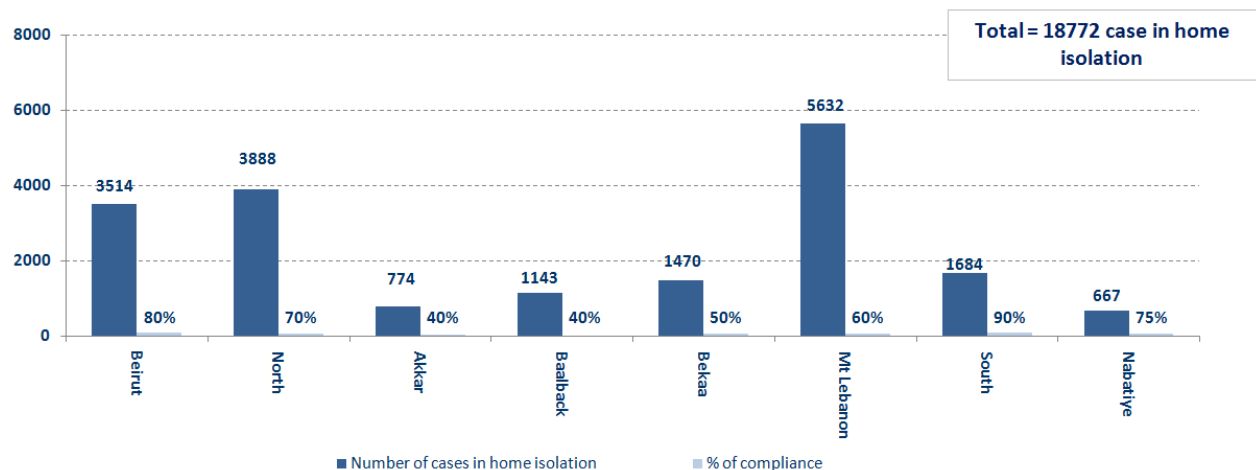
## Distribution of cases by nationality

Lebanese : 50245 cases out of 54624 (88%)

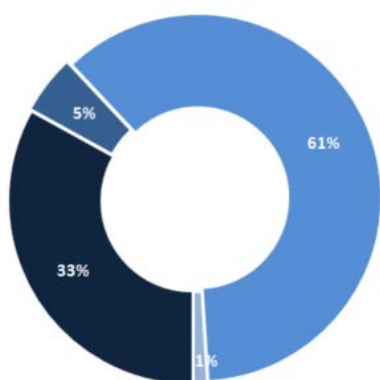




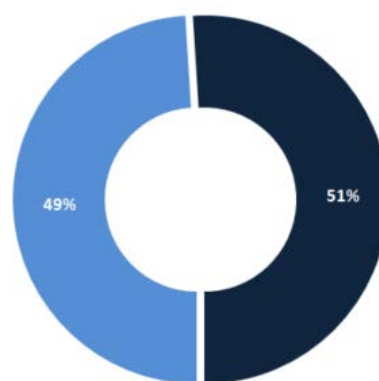
## Number of individuals in home isolation and percentage of commitment to isolation



## Exposure



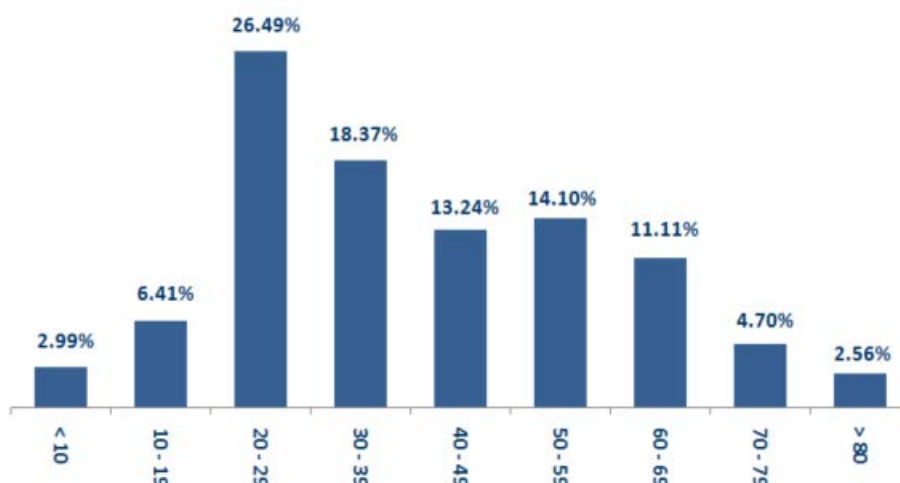
## Distribution according to gender



■ Contact with confirmed case ■ Travel related ■ Under investigation ■ Unidentified source

■ Female ■ Male

## Distribution by age





---

## Decisions and actions taken – 10/12/2020

---



---

### Ministry of Public Health

---

- The Ministry of Public Health is following up the procedures for identifying contacts with municipalities, especially in the towns that are registering an increasing number of positive cases, in addition to organizing campaigns for conducting PCR tests in various Lebanese regions.
- The Ministry of Public Health reports that PCR tests have been completed for flights that arrived in Beirut and were conducted at the airport on 6/10/2020, in addition to the first batch of checks for flights that arrived on 8, 9 and 10/10/2020, where ten (10) positive cases were recorded that were distributed over the flights. next:

Arriving from	Company	Flight Number	Number of Positive Cases
10/06/2020			
Baghdad	Iraqi Airways	131	3
10/08/2020			
Istanbul	PEGASUS	567	1
Cairo	MEA	307	1
Istanbul	Turkish Airlines	828	1
10/09/2020			
Baghdad	Iraqi Airways	131	1
Istanbul	MEA	266	2
10/10/2020			
Istanbul	PEGASUS	756	1
<b>Total</b>			<b>0</b>

---

### Lebanese Red Cross

---

234,025	Number of PCR tests transferred to laboratories	48,508 (69 New)	Number of additional ambulance centers ready to respond	48	ambulance centers	6,212 (41 New)	cases transferred to hospitals
166	Number of volunteers trained to transfer PCR tests	1,498	Number of trained paramedics	8,754 (22 New)	total number of respondents	81,312 (250 New)	number of those benefiting from awareness *sessions
967	The number of university volunteers trained to follow up on prevention measures in companies and institutions	291	Number of university volunteers trained to conduct awareness sessions	550	total LRC volunteers for covid19	8,626 (25 New)	number of trained managers for isolation centers
4,271 (5 New)	Number of beneficiaries from educational electronic platforms COVID-19	95,122	Number of distributed equipment	1,240,561	total distributed posters, brochures, and flyers on covid19 prevention	614 (8 New)	number of prisons that have been disinfected

## General Directorate of Internal Security Forces

The number of seizure records during the past 24 hours					The total number of records since 03/08/2020	
Written records of violating institutions (absorptive capacity and preventive measures)				0		
Written records of persons violating the decision to wear a mask				0	Beirut	20,646
Written records of people violating the general mobilization decision (Aragil* and social distancing)				153	Mount Leb	19,031
<b>Total</b>				<b>153</b>	Beqaa	8,077
					North	6,879
Beirut	Mount Leb	Beqaa	North	South	South	6,974
0	114	0	3	36	<b>Total</b>	<b>61,607</b>

## General Directorate of State Security

- The report of the closure of the Bekaa Governorate center from 10/9/2020 until 10/15/2020 after it was proven that the employees were injured.

Reporting a new injury to the General Directorate of State Security, bringing the total number of cases to 62.

- Notification of the percentage of compliance with the general mobilization decision in the governorates, which came as follows within the past 24 hours:

Beirut	South	North	Akkar	Beqaa	Nabateih	Baalbek Hermel	Mount Leb
30%	50%	60%	50%	60%	60%	N/A	40%

## General Directorate of General Security

- Reporting the decision of the first president of the courts of appeal in the north to close the Batroun courts and some courts in the isolated areas, in coordination with the Ministry of Justice and the Supreme Judicial Council.

- Reporting that the mayor of Batroun, concerned, and the owners of institutions in Batroun were notified of non-compliance with the decision of the Minister of Interior to close, as it is not based on accurate data regarding the number of infected cases in the town.

- Reporting an objection submitted by the municipality of Deir Al-Ahmar to the town's closure decision, on the grounds that all the registered cases have been recovered and that there are only two positive cases in the town at present.

- Reporting the commitment of the municipalities to the decision of the Minister of Interior and Municipalities:

Municipalities that abided by the decision	Municipalities didn't abide by the decision
Mims, Azur, Kobayat, Sheikh Taba, Majdala, Shakra, Romain, Bint Jbeil, Rmeish, Debil, Arabsalim, Numayriya, Shukin, Chaheim, Barja, Houmal	Muhammara, Batroun, and Rumaila

- Follow up the implementation of the required security and preventive measures at the airport, ports and border crossings.
- Reporting cases registered in the various districts and cases in home quarantine.

---

**Ministry of Public Works and Transportation**

---

Departing Flights		Arriving Flights	
Number of Flights	33	Number of Flights	35
Number of Departing Individuals	3,852	Number of Arrivals	3,722

Port	Entered			Left		
	Import	Direction	#	Export	Direction	#
Beirut	Flour	Am Kaser	1	Containers	Limassoul	1
	Blank	Dmeit	1			
Tripoli	Corn	Romania	1			
Saida	Metals	Excendrun	1			
Total			4			1

---

**General announcements**

---

The Ministry of Interior and Municipalities issued Decision No. 1250 on 10/11/2020 related to the closure of some villages and towns due to the high number of cases of Coronavirus in them, based on the recommendations of the Committee for Follow-up of Measures and Preventive Measures of Coronavirus. The main highlights of the decision:

- Closure of the towns listed in the decision starting from 6:00 a.m. on Monday 10/10/2020 until 6:00 a.m. on Monday, 10/19/2020, provided that work stops in all official and private departments and institutions within those villages and cancellation All social events, parties, parties and gatherings of all kinds, and coordination with the clergy to close the houses of worship. The decision specified the sectors excluded from the closure decision.
- Keeping work at the time of preventing exit and entering the streets and roads between the first hour of midnight until six in the morning.
- Determining the number of people traveling by public and private transportation (3 people in public cars, 4 people in private cars, half the carrying capacity of common transport vehicles and buses).
- A complete closure until further notice, without any exceptions, for all bars, cabarets, and nightclubs all over Lebanese territory, subject to the risk of referring the violators to the competent court.
- The commitment of citizens in all regions to wear masks, maintain safe distances, and avoid overcrowding.
- Assigning governors to determine the municipal zone in the major towns included in the decision and overlapping with other towns, taking appropriate measures to implement the content of the decision, stressing citizens in the villages and towns that will be closed with the necessity to stay in homes and not to walk around and to wear masks when forced movement.
- Assigning the General Directorate of Internal Security to strictly enforce this decision and suppress violations, and to organize arrest reports against violators.

The Ministry of Education and Higher Education issued Decision No. 463 / M / 2020 on 10/9/2020 regarding the date of the commencement of teaching in public and private schools and high schools for the academic year 2020/2021. The main highlights of the decision:

- The start of teaching in public and private schools and high schools starting from 10/21/2020 for students in the ninth, second and third grades of secondary, 10/26/2020 for students in the grades of kindergartens, seventh and eighth primary and first secondary, 11/2/2020 for students in the classes of the first and second grades.
- Beginning of teaching in private and public schools and high schools for non-Lebanese students in the afternoon shift starting from 10/21/2020.
- Adopting the blended learning scenario, considering the specificity of each educational institution, provided that the classroom occupancy rate does not exceed 50%.
- The class remains one group if the total number of students does not exceed 18, provided that the principle of spacing and a safe distance between students is respected.
- Organizing lists of students' names, phone numbers, and place of residence for notification if the school is closed, pursuant to the decision of the Minister of Interior and Municipalities to limit the spread of the epidemic.

**Note: The decisions can be found at [www.drm.pcm.gov.l](http://www.drm.pcm.gov.l)**

---

### **Examples of lack of adherence to safety measures**

---

Failure of some municipalities to abide by the Ministry of Interior and Municipalities Decision No. 1025/2020 related to the closure of towns that have a high risk of the spread of the epidemic.

- Demand gatherings and demonstrations.
- Failure to comply with the preventive measures and procedures required in several stores and markets (putting on a muzzle or face mask, sterilizing hands, maintaining a safe distance).
- Non-compliance with the 50% occupancy rate in several restaurants and amusement game centers.
- Gatherings for social events.
- Failure of those in contact with confirmed cases to adhere to home isolation procedures until the results of the laboratory tests are issued.

**If you feel any symptoms, call directly the hotline of the Ministry of Public Health: 1214 or 01/594459**

## A list of the laboratories accredited by the MoPH to conduct PCR tests

### المختبرات الحكومية المؤهلة لإجراء التشخيص المخبري لفيروس كورونا بطريقة الـ RT-PCR

الموقع	المختبر
بيروت	مستشفى رفيق الحريري الجامعي RHUH
حلبا	مستشفى حلبا الحكومي
طرابلس	مستشفى طرابلس الحكومي
البترون	مستشفى البترون الحكومي
كسروان	مستشفى فتوح كسروان الحكومي (البوار)
البيطية	مستشفى نبيه يزى الحكومي الجامعي
تبنين	مستشفى تبنين الحكومي
بنت جبيل	مستشفى بنت جبيل الحكومي
بعلبك	مستشفى بعلبك الحكومي
زحلة	مستشفى الرئيس الياس الهراري الحكومي

### مختبرات المستشفيات العسكرية

بيروت	المستشفى العسكري المركزي في بيروت Hôpital Militaire Central
-------	---

### المختبرات المؤهلة لأخذ عيّات "المسحات الأنفية" بطريقة Drive- thru

بيروت	مختبر ميديكال دياغنوستيك تريتماننت سنتر (الحمراء) Medical Diagnostic Treatment Center (MDTC)
بيروت	مختبر ميد لاب MedLab SAL CIC ALS (الحمراء – الجفجفون)
بيروت	مختبرات عيتاني Itani Medical Laboratories (المزرعة)
الأشرفية	مختبر أ ب سي ABC Laboratories
الشياح	مختبرات معوض الطبية Mouawad Medical Laboratory
الشياح	مختبرات الشياح (د. فؤاد ربحان) Rihan Medical Center
المنصورة	مختبر إكسبيرت لاب Expert Lab
بعلبك	مختبر لايف لاب Life LAB
رياق	مستشفى الرياق Riyak Hospital

المختبرات الخاصة المؤهلة لإجراء التشخيص المخبري لفيروس كورونا بطريقة الـ RT-PCR

المختبر	الموقع
AUBMC مستشفى الجامعة الأميركية	بيروت
Hotel-Dieu de France (HDF) مستشفى أوتيل ديو الجامعي	بيروت
مختبرات رندولف ميريو (الجامعة اليسوعية – المتحف)	بيروت
Laboratoire Rodolphe Mérieux (Université Saint-Joseph)	بيروت
Saint-George Hospital - UMC مستشفى القديس جاورجيوس الجامعي	بيروت
Makassed General Hospital مستشفى المقاصد	بيروت
LAU Medical Center - Rizk Hospital مستشفى رزق الجامعي	بيروت
Hôpital Libanais Geitawi - CHU مستشفى اللبناني الجعيتاوي الجامعي	بيروت
Hôpital Notre-Dame du Rosaire مستشفى الوردية	بيروت
Doctor 's Center مختبر مركز الأطباء	بيروت
Fontana Laboratories مختبر فونتانا (الحمرا)	بيروت
مختبر الأمن العام (العناتية)	بيروت
Laboratoire Jabre-Ghorra مختبرات جبر وغرة	بيروت
Saint Marc Medical & Diagnostic Center مختبر السان مارك	بيروت
Laboratoire Moderne (Modern Lab- Berjaoui) المختبرات الحديثة	الغبري
Sahel General Hospital (SGH) مستشفى الساحل	الغبري
مستشفى الزهراء الجامعي	الغبري
Al Zahraa Hospital - UMC مستشفى الرسول الأعظم	برج الزاجنة
مستشفى بهمن	بيروت
Al Rassoul Al Aazam Hospital Bahman Hospital	حارة حريك
مختبر ناتيونال دياغنوستك سرفيس كومباني	بيروت
National Diagnostic Services Company (NDSC)	حارة حريك
Medical Diagnostic Center مختبر الدكتور محمود عثمان - مركز التحاليل الطبية	البرجة
American Diagnostic Center (ADC) مختبر أميريك دياغنوستك سنتر	الجناب
Mount Lebanon Hospital مستشفى جبل لبنان	بعنا
Hôpital Saint-George – Hadath مستشفى السان جورج الحدث	بعنا
Al Hadi Laboratory مختبر الهادي	بعنا
INOVIE-Liban مختبر	بعنا

Hôpital du Sacré- Coeur مستشفى قلب يسوع	الحازمية
Clinigene مختبر كلينوجان	الحازمية
Hôpital Dr.Samir Serhal مستشفى سرحال	المن
Transmedical for Life مختبر ترانس ميديكال فور ليف	المن
Haroun Hospital مستشفى هارون	الزلفا
Bellevue Medical Center (BMC) مستشفى بلغو	المنصورة
Hôpital Albert Haykal مستشفى هيكال	الكورة
Centre Hospitalier du Nord (CHN) مركز الشمال الإستشفائي	زغرتا
Mazloum Hospital مستشفى المظلوم	طرابلس
Al Mounla Hospital مستشفى المنلا	طرابلس
Nini Hospital مستشفى النيني	طرابلس
مختبر ميكروبيولوجيا الصحة والبيئة LMSE - المعهد العالي للدكتوراه، الجامعة اللبنانية	طرابلس
CHU - Notre-Dame des Secours مستشفى سيدة المعونات الجامعي	جبل
Lab Akiki & Boulos مختبر عقيقي وبولس	جبل
Centre Médical Wakim مختبر واكيم	جولية
Ain Wazein Hospital مستشفى عين وزين	الشوف
Hammoud Hospital UMC مستشفى حمود الجامعي	صيدا
Al Karim Medical Laboratory (KML) مختبر الكريم	صيدا
Sheikh Ragheb Harb Hospital مستشفى الشيخ راجب حرب	البيشة
Sabbah Diagnostic Center (SDC) مختبر السباح	البيشة
Jabal Amel Hospital مستشفى جبل عامل	صور
Mashrek Diagnostic Center (MDC) مختبر المشرق	صور
Dar Al Amal University Hospital مستشفى دار الأمل الجامعي	بعلبك
Khoury General Hospital مستشفى خوري	زحلة
Medical Care Center (MCC) مختبر ميديكال كير سنتر	زحلة