



## Lebanon National Operations Room Daily Report on COVID-19



Saturday, October 10, 2020

Report #206

Time Published: 10:30 PM

New in the report:

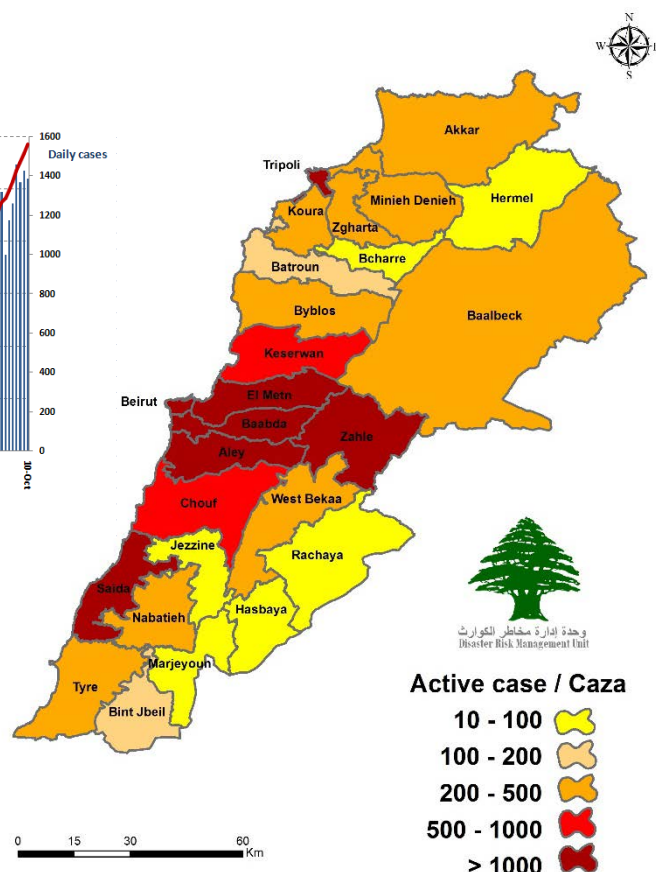
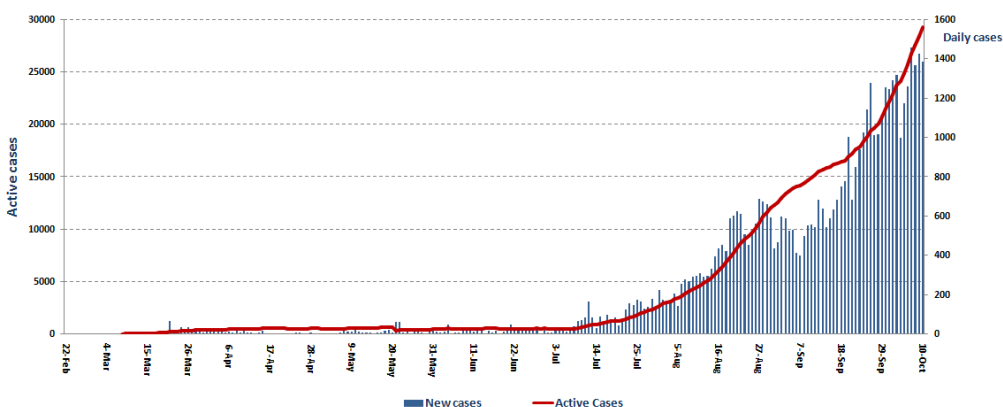
- Decision of the Ministry of Education and Higher Education No. 463 / M / 2020 dated 10/9/2020 regarding the date of the start of teaching in public and private schools and high schools.

<b>1,388</b> New Cases		<b>52,558</b> Total Cases since 21.2.2020		<b>455</b> Total Deaths		<b>22,719</b> Total Recovered	
1,382 Residents	6 Expats	50,797 Residents	1,761 Expats	<b>5</b> New Deaths		<b>539</b> New Recovered	
<b>1,187</b> Total Cases in the Health Sector		<b>29,384</b> Total Active Cases		<b>624</b> Hospitalized Cases		<b>176</b> Total Cases in ICU	
<b>18</b> New Cases in the Health Sector		<b>28,760</b> Cases in Home Isolation		<b>448</b> Mild Cases		<b>4</b> New Cases in ICU	
<b>917,101</b> COVID-19 Tests since 21.2.2020		Lebanon Status compared to the World					
<b>1,046</b> COVID-19 Tests at Airport within 24 hrs.		<b>13,967</b> COVID-19 tests for residents within 24 hrs.		Total Cumulative		52,558	
				Total Deaths		455	
				Deaths percentage		0,86%	
				Total recoveries		22,719	
						37,245,835	
						1,074,409	
						2.88%	
						27,962,952	

Ref: Ministry of Public Health Data

### Number of Cases by Location

- 9,469 case is Under investigation



وحدة إدارة مخاطر الكوارث  
Disaster Risk Management Unit

Beirut	152
Ras Beirut	5
Manara	1
Qreitem	2
Raoche	1
Hamra	7
Ein Al Teeneh	2
Mseitbeh	4
Mar Elias	2
Tallet Al Khayyat	2
Dar Al Fatwa	2
Zarif	2
Mazraa	9
Borj Abi Haidar	7
Basta Fawka	5
Tariq Jdeedeh	15
Ras Nabaa	3
Basta Tahta	3
Rmeil	1
Ashrafieh	19
Others	60
Baabda	156
Chiah	14
Jnah	5
Ouzai	2
Bir Hassan	2
Cite Sportif	1
Ghobeiry	2
Ein Al Rimmaneh	7
Haret Hreik	18
Lailaki	5
Borj Al Barajneh	23
Mreijeh	6
Tahweetet Al Ghadir	9
Baabda	5
Brazilia	2
Hazmieh	2
Hadat	15
Kfarshima	1
Haret El Set	1
Hlalieh	1
Arayya	1
Falougha	9
Others	25
Chouf	17
Damour	2
Haret Naameh	2
Chhim	3
Anout	1
Barja	5
Baaseer	2
Debbiyeh	2
Jiyyeh	1
Wady Al Zayneh	1
Rmeileh	1
Zaarourieh	1
Bsaba	1
Beshteffine	1
Kfarfaqoud	1
Btalloun	1
Barouk	1
Others	3

Saida	73
Old Saida	9
Bramieh	1
Hlalieh	2
Qayyaa	1
Haret Saida	2
Miyyeh W Miyyeh	2
Ein AL Helwe	7
Majdlyoun	4
Aabra	5
Qrayyeh	1
Bqosta	4
Ein Al Delb	2
Ghazieh	1
Darb Al Seem	4
Matriyet Al Choumar	1
Adloun	2
Bablieh	1
Khartoum	1
Ghassanieh	1
Sarafand	2
Najarieh	2
Arab Tabbaya	1
Kfar Melky	1
Others	16
Nabatieh	17
Habbouch	7
Jbaa	1
Deir Al Zahrani	1
Jebsheet	1
Ansar	1
Qosaybeh	2
Qaaqaaiyet Al Jisr	1
Yuhmor	1
Others	2
Zahle	48
Hoch AL Zaraaneh	1
Maallaqa	3
Hoch Al Oumara	2
Ablah	2
Niha	1
Ksara	4
Chtoura	1
Makseh	1
Jdita	2
Saadnayel	2
Qab Elais	4
Bar Elias	2
Majdel Anjar	1
Ali Al Nahry	1
Reet	1
Terbol	2
Ein Kfar Zabad	3
Dalhamieh	2
Others	13
Bcharre	2
Diman	1
Hasroun	1

Kesrwen	84
Sarba	2
Kaslik	1
Zouk Michael	7
Ghadir	9
Zouk Mosbeh	5
Adonis	6
Haret Sakher	3
Sahel Alma	1
Tabarja	3
Adma & Dafneh	6
Safra	1
Bouar	1
Oqaybeh	2
Ajaltoun	2
Ballouneh	1
Sehaileh	1
Aintoura	2
Ghazir	8
Maameltein	1
Kfarhbab	1
Chnaniir	2
Ghosta	1
Nammoura	1
Hssein	1
Yahshoush	1
Reifoun	1
Ashkout	1
Feitroun	1
Kfardebian	3
Hraajel	2
Faraya	2
Others	5
Zghorta	25
Zghorta	5
Ardat	1
Kfardlakos	3
Majdlayya	4
Alma	1
Kfarzeena	2
Bsebbhel	1
Karam Saddeh	2
Ehden	1
Mezyara (Haref)	1
Meryata	3
Others	1
Akkar	24
Halba	2
Jdeidet Al Joumeh	1
Mashha	1
Qebbet Shamra	1
Bebnin	1
Nahr Al Bared	3
Meshmesh	1
Fneidek	2
Majdala	7
Rahbe	1
Wady Al Jamous	1
Others	3

Matn	195
Borj Hammoud	15
Nabaa	1
Sin El Fil	4
Jesr El Basha	1
Jdeidet Al Met	11
Bouchrieh	5
Dora	2
Sed Al Bouchrieh	1
Sabtieh	2
Deir Mar Roukoz	2
Dekwene	12
Antelias	14
Jal El Dib	2
Naqqash	4
Zalka	6
Byaqout	2
Dbayyeh	8
Mansourieh	6
Fanar	5
Ein Saadeh	6
Roumieh	22
Bqannaya	2
Bsalim	10
Mteileb	2
Beit Al Chaar	3
Deek El Mahdi	4
MazraetYashouh	17
Bekfayya	2
Hemlaya	1
Broummana	2
Baabdat	2
Beit Merry	1
Dahr Al Souwan	1
Bolonia	1
Mousa Douwar	1
Others	15
Tyr	6
Maaroub	1
Bazourieh	1
Kanoun Nahr	1
Hallousieh Tahta	1
Abbasieh	1
Others	7
Koura	20
Amyoun	2
Kosba	3
Btouratej	2
Deddeh	2
Anfeh	1
Ras Masqa	2
Ddahr El Ein	6
Others	2

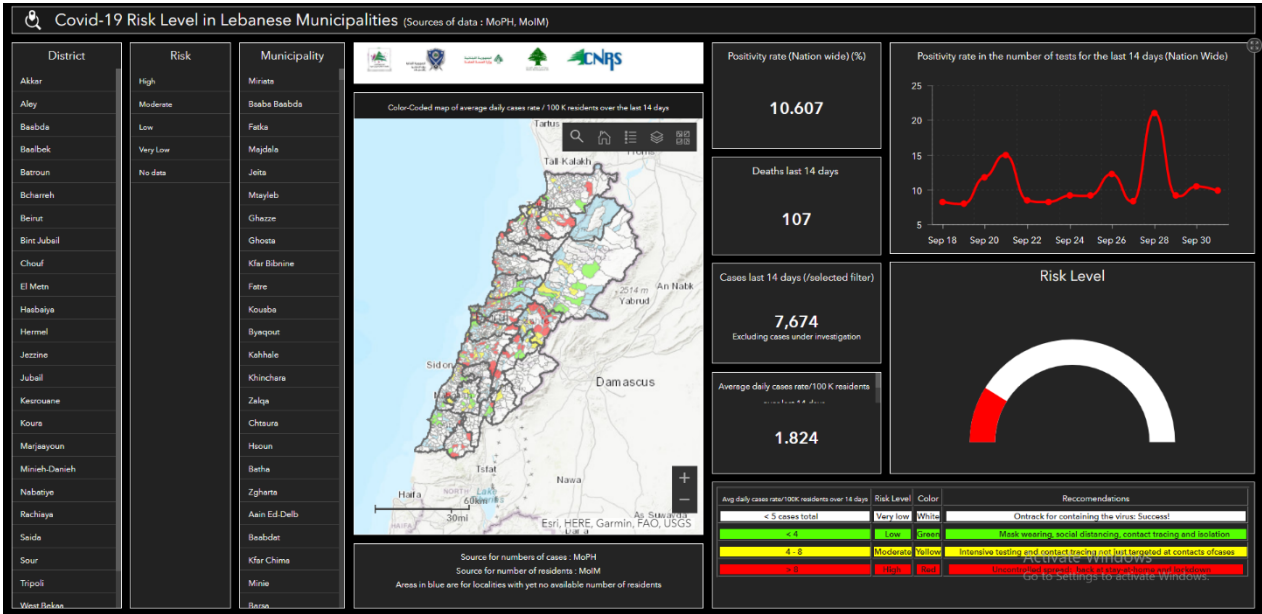
Byblos	34
Byblos	8
Mastita	1
Blat	1
Amshit	6
Halat	3
Nahr Ibrahim	3
Ehmej (al Borj)	1
Ennaya	1
Bentael	1
Hboub	2
Gherfeen	1
Qartaba	1
Others	5
Tripoli	112
Zaytoun	8
Bab Al Ramel	2
Qebbeh	6
Zahrieh	1
Tabbaneh	2
Mina	40
Qalamoun	3
Tripoli	40
Beddawy	6
Others	4

Hermel	1
Hermel	1
Rashayya	1
Rashayya Fawka	1
Bint Jbeil	2
Ein Ebel	1
Rmeish	1
Aley	17
Hay El Sillom	5
Khaldeh	5
Choeifat Al Oumara	8
Deir Qoubel	2
Aramoun	17
Bshamoun	4
Ein Anoub	1
Houmal	1
Bsous	1
Aley	2
Kahale	2
Remhala	1
Majdelbaana	1
Saoufar	1
Eghmeed	1
Ein Dara	4
Others	6

Baalbek	18
Baalbek	6
Doures	2
Al Ein	2
Ersal	1
Bednayel	2
Qasr Nabba	1
Temnin Al Fawka	1
Brital	1
Others	2
Batroun	21
Batroun	3
Kfar Abida	2
Kebba	1
Selaata	1
Shekka	3
Bajdarfel	1
Ebreen	2
Nahrieh	1
Ras Nhash	1
Hamat	3
Others	3

Menyh Duniyeh	16
Naby Youshaa	1
Menyeh	7
Bhannin	1
Taran	1
Beit Al Faqs	1
Baazqoun	1
Bakhoun	2
Kfar Bebnin	1
Others	1
Marjeyoun	5
Marjeyoun	1
Kheyam	1
Mays Al Jabal	1
Souwaneh	1
Others	1
Hasbaya	4
Hasbaya	4
Western Bekaa	7
Jeb Jennin	1
Kamed El Loz	1
Khyara	1
Manara	1
Marej	1
Rawda (Istabel)	2
Others	268

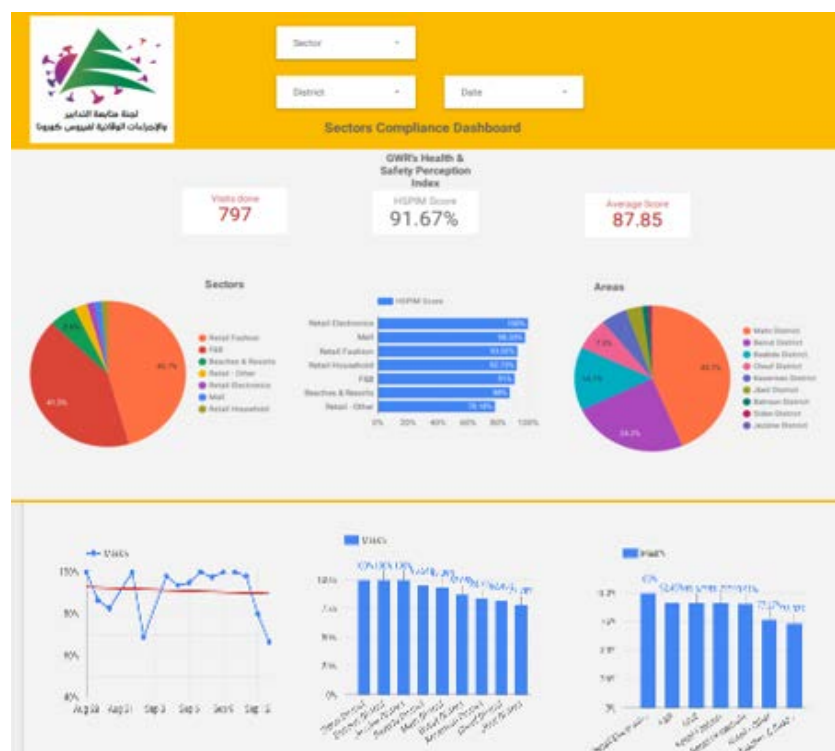
# The Online platform to measure the level of risk of the spread of the new Corona virus



This interactive platform allows you to know the level of risk of spreading the kurna virus according to districts, based on the number of cases registered daily and the number of residents in each district. For more information on a daily basis, you can access the following link:

<https://bit.ly/DRM-RiskLevelInMunicipalities>

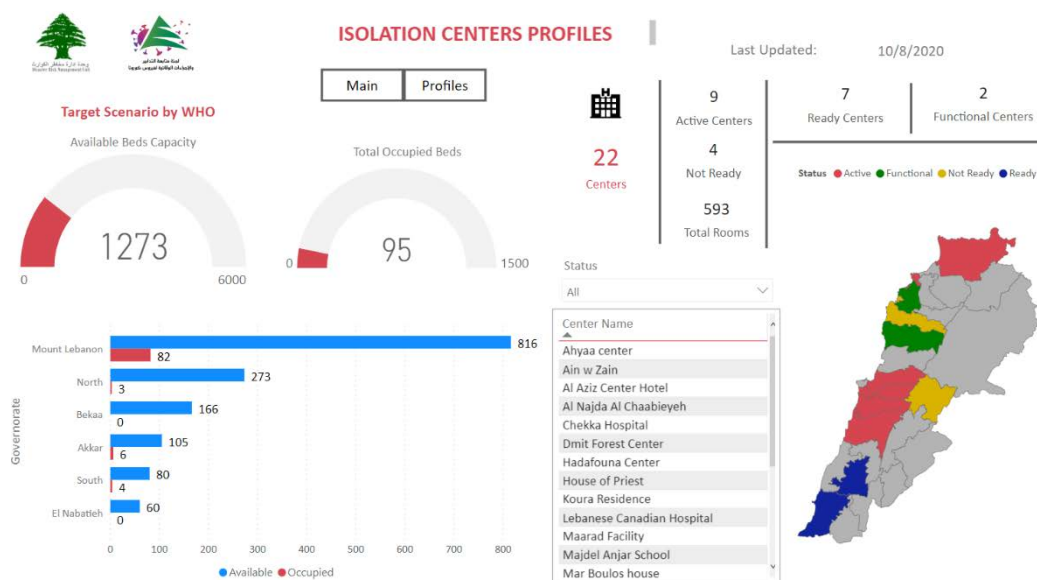
## Online platform to track sector commitment in general mobilization procedures



Based on the recommendation issued by the National Committee for Follow-up of Preventive Measures and Measures to Confront the Coronavirus to open all sectors, provided that the general mobilization procedure (safe distance, muzzle, and hand sterilization) be applied, a special electronic platform was created that allows monitoring and measuring the percentage of commitment by various sectors on an ongoing basis. The detailed results can be viewed directly at the following link:

<http://bit.ly/covidsectordata>

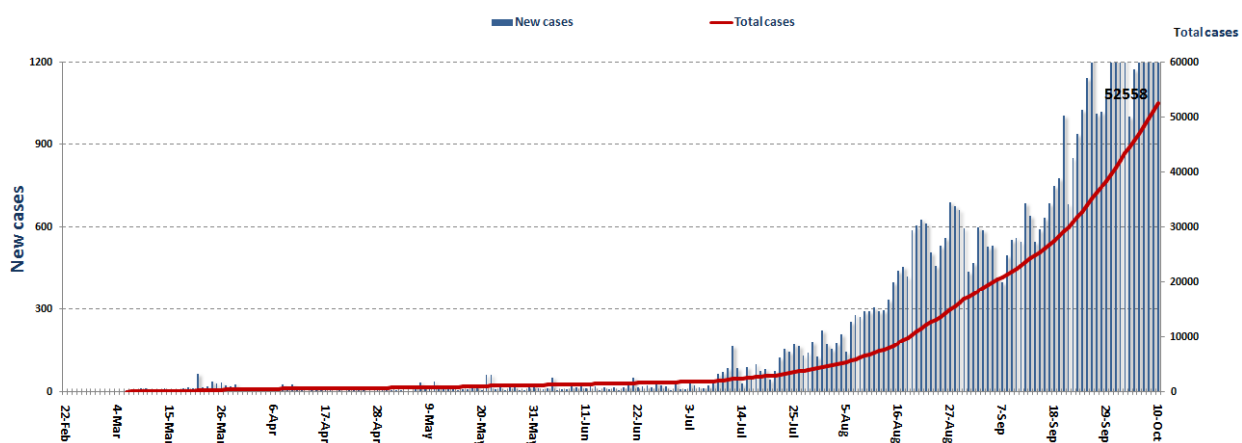
## Occupancy rate of isolation centers for cases infected with Coronavirus



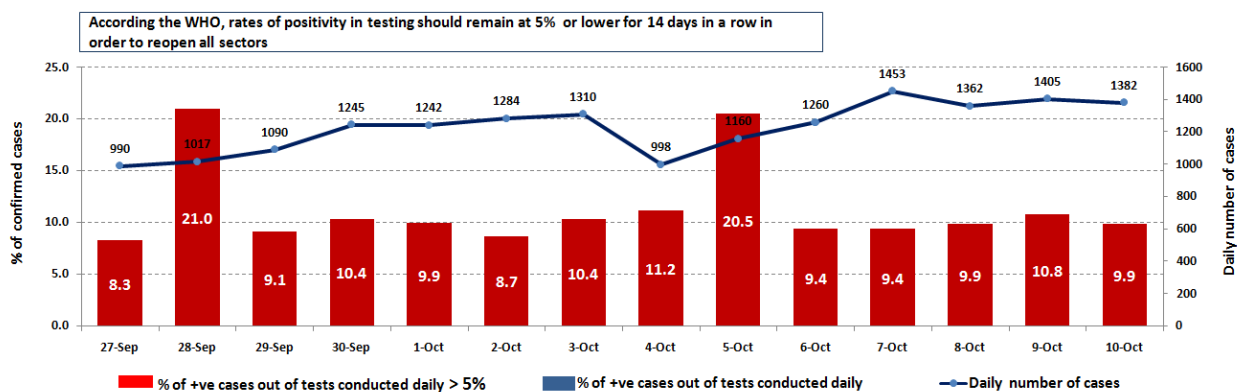
For more information about the isolation centers' distribution and the percentage of their occupancy, enter the following link: <http://bit.ly/DRM-IsolationCentersProfiles>

Note: These centers have been equipped in cooperation between the National Committee for Follow-up of Preventive Measures and Measures to Confront the Coronavirus and Governors and Municipalities, the United Nations Development Program, the World Health Organization, UNICEF, the Ministry of Public Health, the Syndicate of Nurses in Lebanon and the Syndicate of Specialists in Social Work.

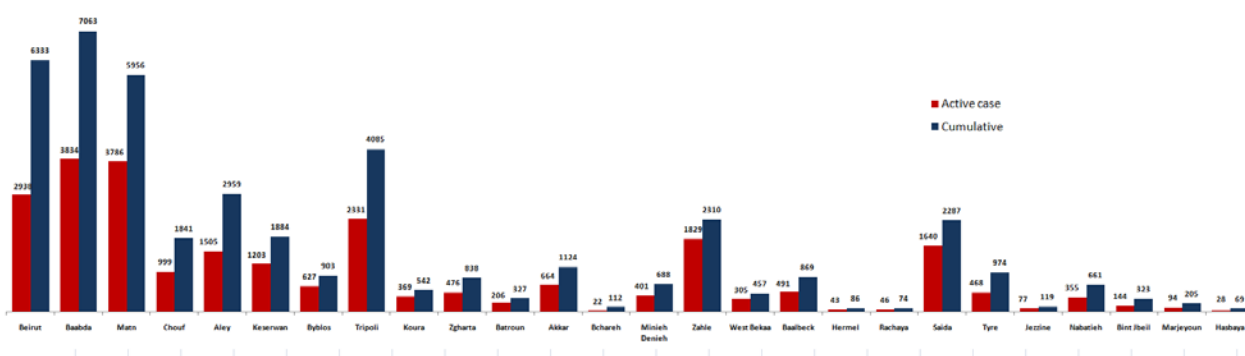
## Cases per day



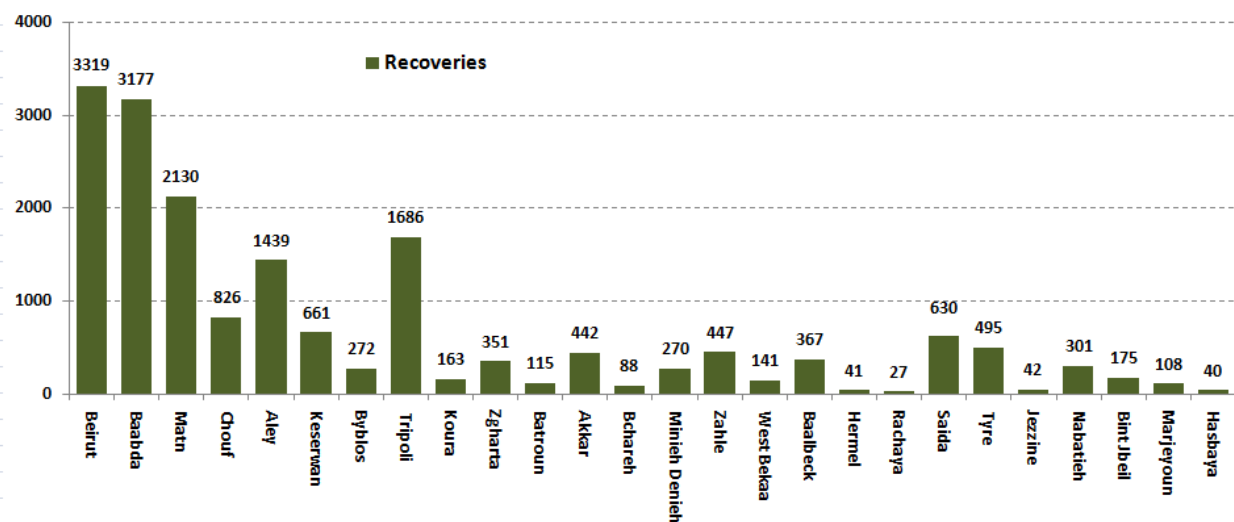
## The percentage of positive cases out of the number of daily checks (27 September to 10 October 2020)



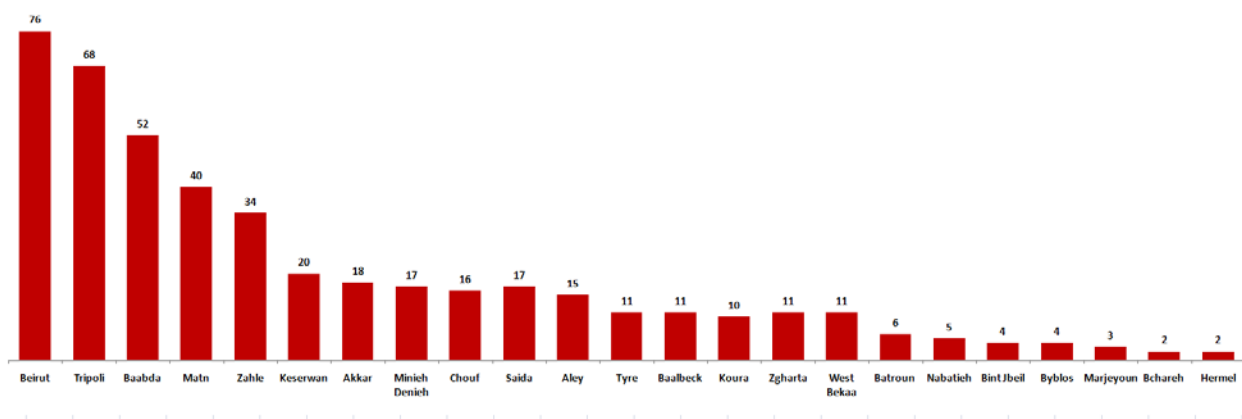
## Distribution of Active Cases by Districts



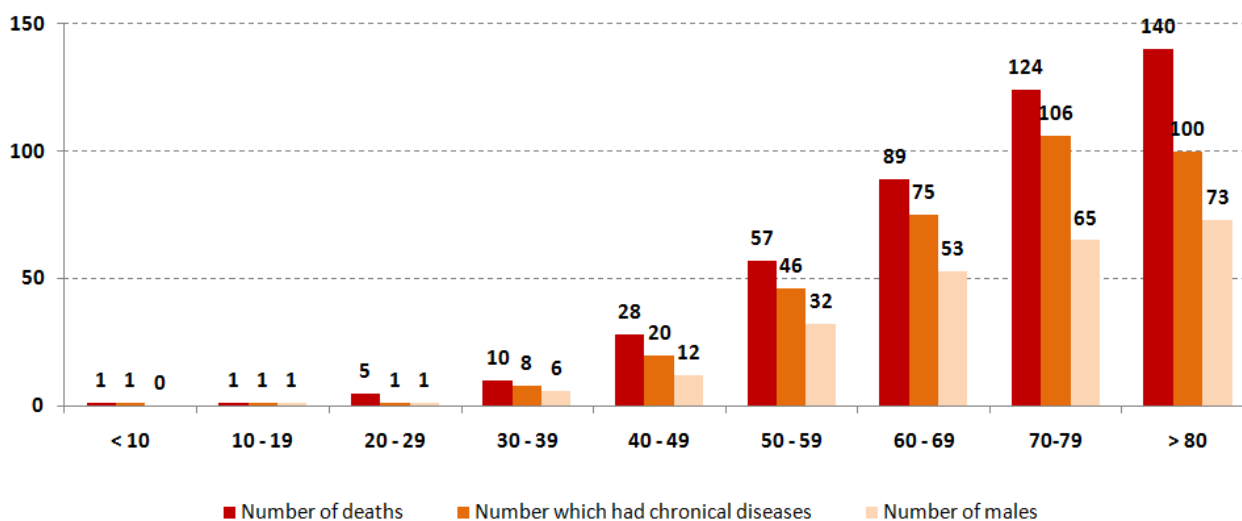
## Recoveries



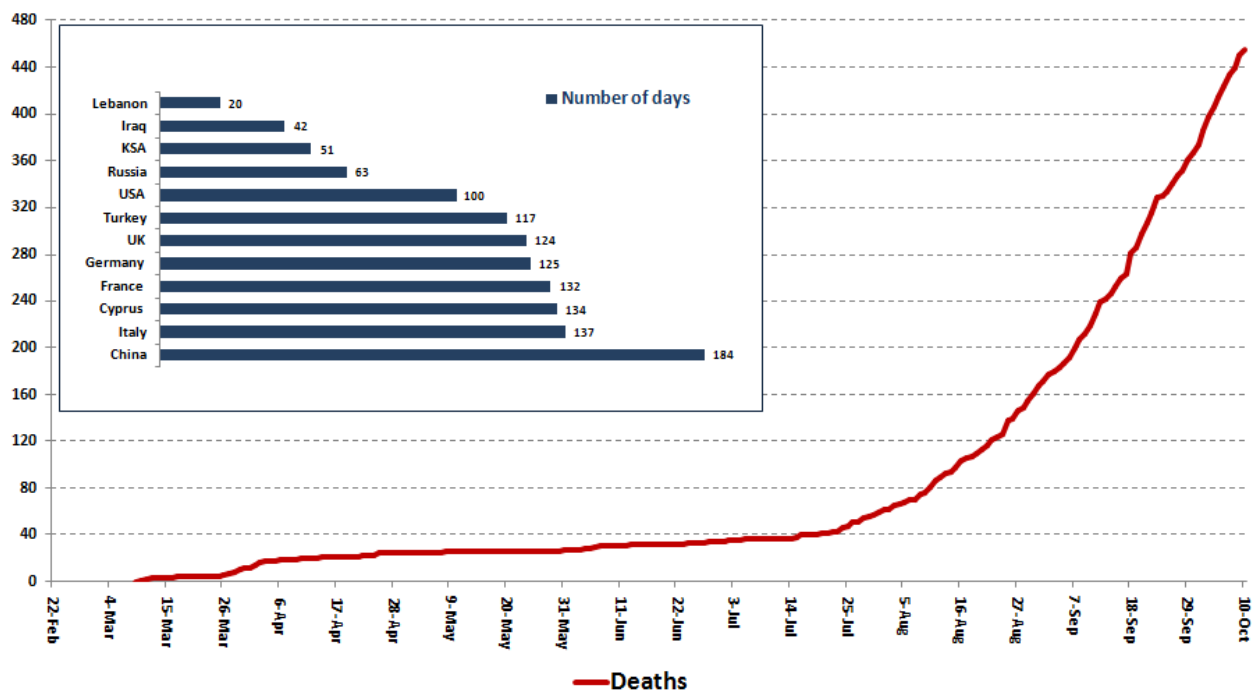
## Distribution of deaths by Governorates



## Distribution of deaths by Age



## Comparison of the rate of doubling of the number of deaths in Lebanon with other countries (death doubling rate)

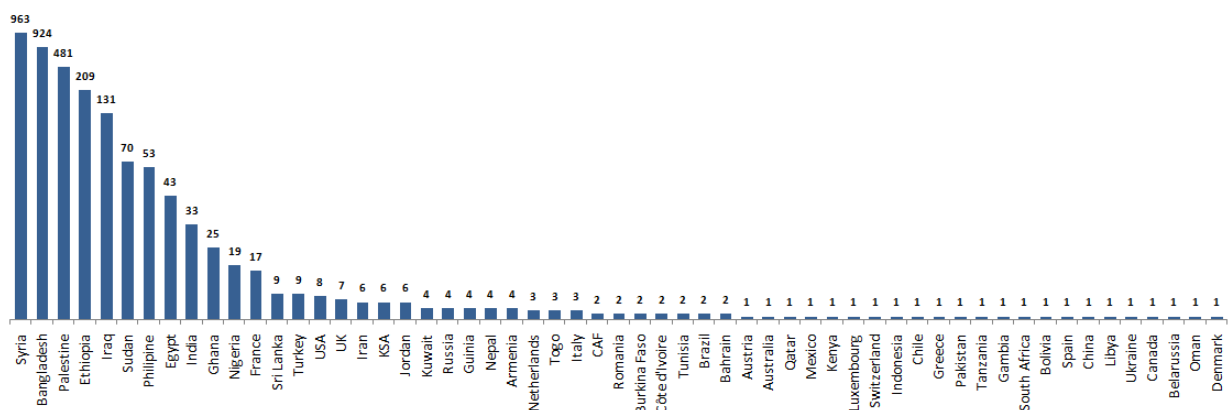


## The distribution of the recorded deaths during the past 24 hours

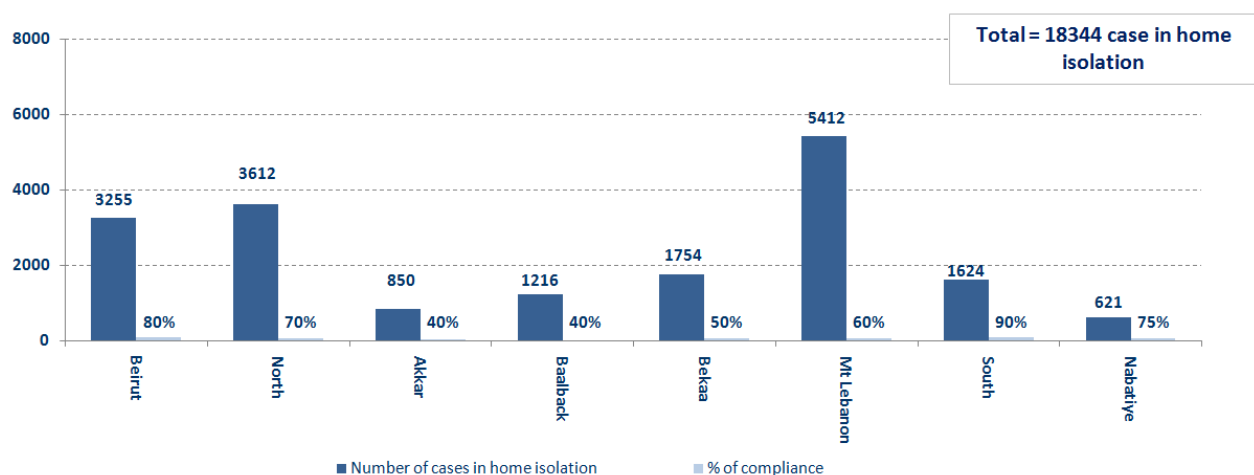
Hospital	Residence	Gender	Age	Chronic
Harire Gov.	West Bekaa	Female	74	Yes
Saydet Zgharta	Zgharta	Female	92	Yes
Berri Gov.	Saida	Female	66	Yes
Tripoli Gov.	Tripoli	Male	61	Yes
Haykal	Tripoli	Male	55	Yes

## Distribution of cases by nationality

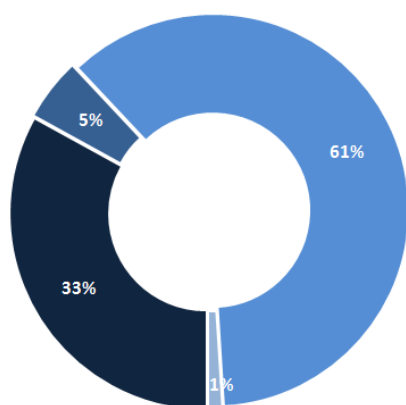
Lebanese : 48179 cases out of 52558 (88%)



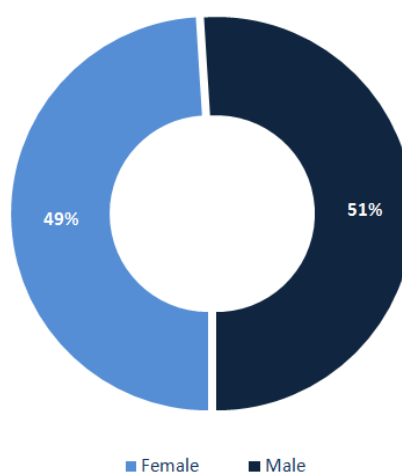
## Number of individuals in home isolation and percentage of commitment to isolation



## Exposure

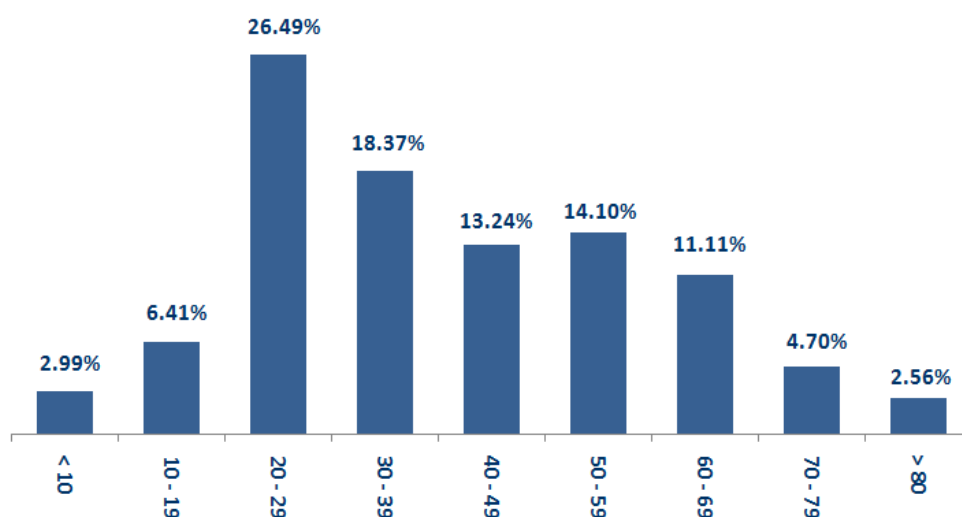


## Distribution according to gender



■ Contact with confirmed case ■ Travel related ■ Under investigation ■ Unidentified source

## Distribution by age



---

## Decisions and actions taken – 10/10/2020

---



---

### Ministry of Public Health

---

The Ministry of Public Health reported that PCR checks have been completed for flights that arrived in Beirut and were conducted at the airport on 6/10/2020, in addition to the first batch of flight checks that arrived in Beirut on 10/6/2020, where thirteen (13) positive cases were recorded. New ones distributed over the following trips:

Arriving from	Company	Flight Number	Number of Positive Cases
6/10/2020			
Istanbul	MEA	266	1
Istanbul	MEA	266	1
7/10/2020			
Istanbul	MEA	266	7
Al Najef	Iraqi Airways	139	2
Istanbul	Turkish Airlines	826	2
<b>Total</b>			<b>13</b>

---

### Lebanese Red Cross

---

234,025	Number of PCR tests transferred to laboratories	48,273 (304 New)	Number of additional ambulance centers ready to respond	48	ambulance centers	6,110 (57 New)	cases transferred to hospitals
166	Number of volunteers trained to transfer PCR tests	1,498	Number of trained paramedics	8,732	total number of respondents	80,964 (1070 New)	number of those benefiting from awareness *sessions
967	The number of university volunteers trained to follow up on prevention measures in companies and institutions	291	Number of university volunteers trained to conduct awareness sessions	550	total LRC volunteers for covid19	8,601 (21 New)	number of trained managers for isolation centers
4,255 (4 New)	Number of beneficiaries from educational electronic platforms COVID-19	95,094 (36 New)	Number of distributed equipment	1,240,561	total distributed posters, brochures, and flyers on covid19 prevention	606 (13 New)	number of prisons that have been disinfected

## General Directorate of Internal Security Forces

The number of seizure records during the past 24 hours					The total number of records since 03/08/2020	
Written records of violating institutions (absorptive capacity and preventive measures)				0		
Written records of persons violating the decision to wear a mask				0	Beirut	20,646
Written records of people violating the general mobilization decision (Aragil* and social distancing)				12	Mount Leb	18,898
<b>Total</b>				<b>12</b>	Beqaa	8,077
					North	6,872
Beirut	Mount Leb	Beqaa	North	South	South	6,938
0	0	0	5	7	<b>Total</b>	<b>61,431</b>

## General Directorate of State Security

- The report of the closure of the Bekaa Governorate center from 10/9/2020 until 10/15/2020 after it was proven that the employees were injured.
- Reporting a new injury to the General Directorate of State Security, bringing the total number of cases to 62.
- Notification of the percentage of compliance with the general mobilization decision in the governorates, which came as follows within the past 24 hours:

Beirut	South	North	Akkar	Beqaa	Nabateih	Baalbek Hermel	Mount Leb
50%	41%	57%	40%	42%	60%	N/A	50%

## General Directorate of General Security

Reporting a new injury among public security personnel.

- Reporting the commitment of the municipalities to the decision of the Minister of Interior and Municipalities:

Municipalities that abided by the decision	Municipalities didn't abided by the decision
<p>Jezzine: Kafr Jamra</p> <p>Aley: Bhamdoun Al-Dayaa, Al-Azounieh, Al-Kahla, Souk Al-Gharb, Ain Dara, and Houmal.</p> <p>Akkar: Kobayat, Sheikh Taba, Majdala.</p> <p>Zahle: Ferzol, Niha, Qaa Al-Reem, Saadnayel, Bar Elias, and Chtoura.</p>	<p>North: Muammarah</p> <p>Chouf: Zaaruriya, Anout, Shehim, Barja, Ramlieh, Jahiliyya, Kfarhim, Deir El Qamar, Batloun, Batma, Khuraiba, Niha.</p>

- Follow up the implementation of the required security and preventive measures at the airport, ports and border crossings.
- Reporting cases registered in the various districts and cases in home quarantine.

## Ministry of Public Works and Transportation

Departing Flights		Arriving Flights	
Number of Flights	36	Number of Flights	35
Number of Departing Individuals	3,855	Number of Arrivals	3,547

Port	Entered			Left		
	Import	Direction	#	Export	Direction	#
Beirut	Cattles	Eskandrun	1			
	Cattles	Norway	1			
	Cattles	Turkey	1			
	Containers	Russia	1			
	Battleship	-	1			
Tripoli	Blank	Limasoul	2			
Total			7			

### General announcements

The Ministry of Education and Higher Education issued Decision No. 463 / M / 2020 on 10/9/2020 regarding the date for the start of teaching in public and private schools and high schools for the academic year 2020/2021. The main highlights of the decision:

- The start of teaching in public and private schools and high schools starting from 10/21/2020 for students in the ninth, second and third grades of secondary, 10/26/2020 for students in the grades of kindergartens, seventh and eighth primary and first secondary, 11/2/2020 for students in the classes of the first and second grades.
- Beginning of teaching in private and public schools and high schools for non-Lebanese students in the afternoon shift starting from 10/21/2020.
- Adopting the blended learning scenario, taking into account the specificity of each educational institution, provided that the classroom occupancy rate does not exceed 50%.
- The class remains one group if the total number of students does not exceed 18, provided that the principle of spacing and a safe distance between students is respected.
- Organizing lists of students' names, phone numbers, and place of residence for notification in the event that the school is closed, pursuant to the decision of the Minister of Interior and Municipalities to limit the spread of the epidemic.

The General Directorate of Civil Aviation at the Ministry of Public Works and Transport issued Circular No. 57/2 dated 10/9/2020 to all airlines and ground services companies operating at Rafic Hariri International Airport in Beirut regarding procedures related to passengers arriving from Iraq starting from 10/12 / 2020, as all passengers coming from Iraq must have performed a PCR examination within a maximum period of 96 hours from the date of issuance of the test result until arrival in Lebanon, in laboratories accredited by the Ministry of Public Health as follows:

- Trips coming from Baghdad: An examination issued by the Private Nursing Home Hospital in Medicine City and the Medical Consultant Laboratory in Yarmouk.
- For flights coming from Basra and Najaf: a test issued by any laboratory and must be sealed with the seal of the health department issued by it.
- Trips coming from Erbil: an examination issued by any laboratory in the governorate that is sealed with the seal of the health department in the governorate.

All passengers coming from Iraq are subject to a check upon their arrival at Beirut airport according to the approved mechanism, with a commitment to home or hotel quarantine for a period of 48 hours from the date of their arrival in Lebanon until they are notified of the result of the examination they conducted at the airport, and the requirement for a hotel reservation in advance is canceled.

The Committee on Follow-up of Preventive Measures and Procedures to Confront the Coronavirus, in its meeting on 7/10/2020, issued the following recommendations:

The start of the academic year 2020-2021 through blended, partial and progressive education, starting 10/12/2020 for the ninth, eleventh and twelfth grades in academic education and their equivalent in vocational education, provided that the rest of the grades are gradually followed up according to a program established by the Ministry of Education and Higher Education .

- Educational institutions in towns with a record high daily injury rate, which will be determined by the Ministry of Interior and Municipalities at a time, shall be closed. Students, teachers, administrators and workers living in these towns are also prohibited from moving to their work centers throughout the closure period.

Amending Circular of the Ministry of Public Works and Transport

- General Directorate of Civil Aviation No. 52/2 on 9/21/2020 and canceling the clause requiring passengers coming from Iraq, except for Lebanese and foreigners residing in Lebanon, to have a prepaid hotel reservation for 72 hours in one of the specified hotels. Provided that the cases coming from Iraq will be tracked by the Ministry of Public Health in cooperation with the Ministry of Foreign Affairs and Expatriates and the Iraqi Embassy in Lebanon.

Close all nightclubs, discotheques and bars until further notice, according to the development of the epidemiological reality.

- The Ministry of Public Health, in cooperation with the Ministry of Interior and Municipalities, activated the IMPACT platform to track positive cases and circulate them to all accredited laboratories to conduct PCR tests

- Determining the towns with the standard high daily casualty rate on a weekly basis, provided that they are covered by the closure decision issued by the Ministry of Interior and Municipalities for a week.

- Excluding the food and industry sectors, institutions working in the field of fuel and gas distribution, and establishments operating in the distribution of drugs and cables in Lebanon, from the closure decision issued in the decision of the Ministry of Interior and Municipalities.

- The Ministry of Labor issued a circular to all official and private institutions not to take any administrative or behavioral measures against workers residing in towns covered by the closure decision.

- The Committee for the Follow-up of Preventive Measures and Procedures to Confront the Coronavirus Invites all media outlets to cooperate in order to develop an awareness plan against the dangers of the Coronavirus, in coordination with NGOs and clerics.

- The implementation of the Ministry of Interior and Municipalities Decision No. 1205 of 10/2/2020 related to the closure of some villages and towns due to the high number of Coronavirus infections in them, as the decision kept on working with the timing of preventing exit and entering the streets and roads between the first hour after midnight until six o'clock in the morning, the decision also included the closure of 111 towns in various Lebanese regions based on an analysis of the epidemiological situation in them for a full week, starting from Sunday 10/4/2020 until 12/10/2020 with specifying exceptions and the implementation mechanism for implementing the decision in cooperation between the governors, municipalities and security services all.

**Note: The decisions can be found at [www.drm.pcm.gov.l](http://www.drm.pcm.gov.l)**

---

### **Examples of lack of adherence to safety measures**

---

- Demand gatherings and demonstrations.
- Failure to comply with the preventive measures and procedures required in a number of stores and markets (putting on a muzzle or face mask, sterilizing hands, maintaining a safe distance).
- Non-compliance with the 50% occupancy rate in several restaurants and amusement game centers.
- Gatherings for social events.
- Failure of those in contact with confirmed cases to adhere to home isolation procedures until the results of the laboratory tests are issued.

## A list of the laboratories accredited by the MoPH to conduct PCR tests

### المختبرات الحكومية المؤهلة لإجراء التشخيص المخبري لفيروس كورونا بطريقة الـ RT-PCR

الموقع	المختبر
بيروت	مستشفى رفيق الحريري الجامعي RHUH
حلبا	مستشفى حلبا الحكومي
طرابلس	مستشفى طرابلس الحكومي
البترون	مستشفى البترون الحكومي
كسروان	مستشفى فتوح كسروان الحكومي (البوار)
البقعة	مستشفى نبيه بري الحكومي الجامعي
تلين	مستشفى تلين الحكومي
بنت جبيل	مستشفى بنت جبيل الحكومي
بعلبك	مستشفى بعلبك الحكومي
زحلة	مستشفى الرئيس اليازج الهراوي الحكومي

### مختبرات المستشفيات العسكرية

بيروت	المستشفى العسكري المركزي في بيروت Hôpital Militaire Central
-------	---

### المختبرات المؤهلة لأخذ عيّات "المسحات الأنفية" بطريقة Drive- thru

بيروت	مختبر ميديكال دياغنوستيك تريمالت سنتر (الحمراء) Medical Diagnostic Treatment Center (MDTC)
بيروت	مختبر ميد لاب MedLab SAL CIC ALS (الحمراء - الجفيلور)
بيروت	مختبرات عيتاني Itani Medical Laboratories (المزرعة)
الأشرفية	مختبر آ ب سي ABC Laboratories
الشياح	مختبرات معوض الطبية Mouawad Medical Laboratory
الشياح	مختبرات الشياح (د. فؤاد ربحان) Rihan Medical Center
المنصورة	مختبر إكسبرت لاب Expert Lab
بعلبك	مختبر لايف لاب Life LAB
رياق	مستشفى الرياق Riyak Hospital

المختبرات الخاصة المؤهلة لإجراء التشخيص المخبري لفيروس كورونا بطريقة الـ RT-PCR

الموقع	المختبر
بيروت	مستشفى الجامعة الأميركية AUBMC
بيروت	مستشفى أوتيل ديو الجامعي (HDF) Hotel-Dieu de France
بيروت	مختبرات رندولف ميريو (الجامعة اليسوعية – المتحف) Laboratoire Rodolphe Mérieux (Université Saint-Joseph)
بيروت	مستشفى القديس جاورجيوس الجامعي Saint-George Hospital - UMC
بيروت	مستشفى المقاصد Makassed General Hospital
بيروت	مستشفى رزق الجامعي LAU Medical Center - Rizk Hospital
بيروت	مستشفى اللبناني الجعيتاوي الجامعي Hôpital Libanais Geitawi - CHU
بيروت	مستشفى الوردية Hôpital Notre-Dame du Rosaire
بيروت	مختبر مركز الأطباء Doctor 's Center
بيروت	مختبر فونتانا (الحمرا) Fontana Laboratories
بيروت	مختبر الأمن العام (العنالية)
بيروت	مختبرات جبر وغرة Laboratoire Jabre-Ghorra
بيروت	مختبر السان مارك Saint Marc Medical & Diagnostic Center
الغبري	المختبرات الحديثة Laboratoire Moderne (Modern Lab- Berjaoui)
الغبري	مستشفى الساحل Sahel General Hospital (SGH)
الغبري	مستشفى الزهراء الجامعي
برج الزاجنة	مستشفى الرسول الأعظم Al Zahraa Hospital - UMC
حارة حريك	مستشفى بهمن Bahman Hospital
حارة حريك	مختبر ناتيونال دياغنوستك سرفيس كومباني National Diagnostic Services Company (NDSC)
البرجة	مختبر الدكتور محمود عثمان - مركز التحاليل الطبية Medical Diagnostic Center
الجناب	مختبر أميريك دياغنوستك سنتر American Diagnostic Center (ADC)
بعنا	مستشفى جبل لبنان Mount Lebanon Hospital
بعنا	مستشفى السان جورج الحدث Hôpital Saint-George – Hadath
بعنا	مختبر الهادي Al Hadi Laboratory
بعنا	مختبر INOVIE-Liban

الحازمية	مستشفى قلب يسوع Hôpital du Sacré- Coeur
الحازمية	مختبر كلينوجان Clinigene
المن	مستشفى سرحال Hôpital Dr.Samir Serhal
المن	مختبر ترانس ميدكال فور ليف Transmedical for Life
الزلفا	مستشفى هارون Haroun Hospital
المنصورة	مستشفى بلغو Bellevue Medical Center (BMC)
الكورة	مستشفى هيكال Hôpital Albert Haykal
زغرتا	مركز الشمال الإستشفائي Centre Hospitalier du Nord (CHN)
طرابلس	مستشفى المظلوم Mazloum Hospital
طرابلس	مستشفى المنلا Al Mounla Hospital
طرابلس	مستشفى النيني Nini Hospital
طرابلس	مختبر ميكروبيولوجيا الصحة والبيئة LMSE - المعهد العالي للدكتوراه، الجامعة اللبنانية
جبل	مستشفى سيدة المعونات الجامعي CHU - Notre-Dame des Secours
جبل	مختبر عقيقي وبولس Lab Akiki & Boulos
جونية	مختبر واكيم Centre Médical Wakim
الشوف	مستشفى عين وزين Ain Wazein Hospital
صيدا	مستشفى حمود الجامعي Hammoud Hospital UMC
صيدا	مختبر الكريم Al Karim Medical Laboratory (KML)
البيشة	مستشفى الشيخ راجب حرب Sheikh Ragheb Harb Hospital
البيشة	مختبر المباح Sabbah Diagnostic Center (SDC)
صور	مستشفى جبل عامل Jabal Amel Hospital
صور	مختبر المشرق Mashrek Diagnostic Center (MDC)
بعلبك	مستشفى دار الأمل الجامعي Dar Al Amal University Hospital
زحلة	مستشفى خوري Khoury General Hospital
زحلة	مختبر ميديكال كير سنتر Medical Care Center (MCC)