



Lebanon National Operations Room Daily Report on COVID-19



Thursday, October 01, 2020

Report #197

Time Published: 10:00 PM

New in the report:

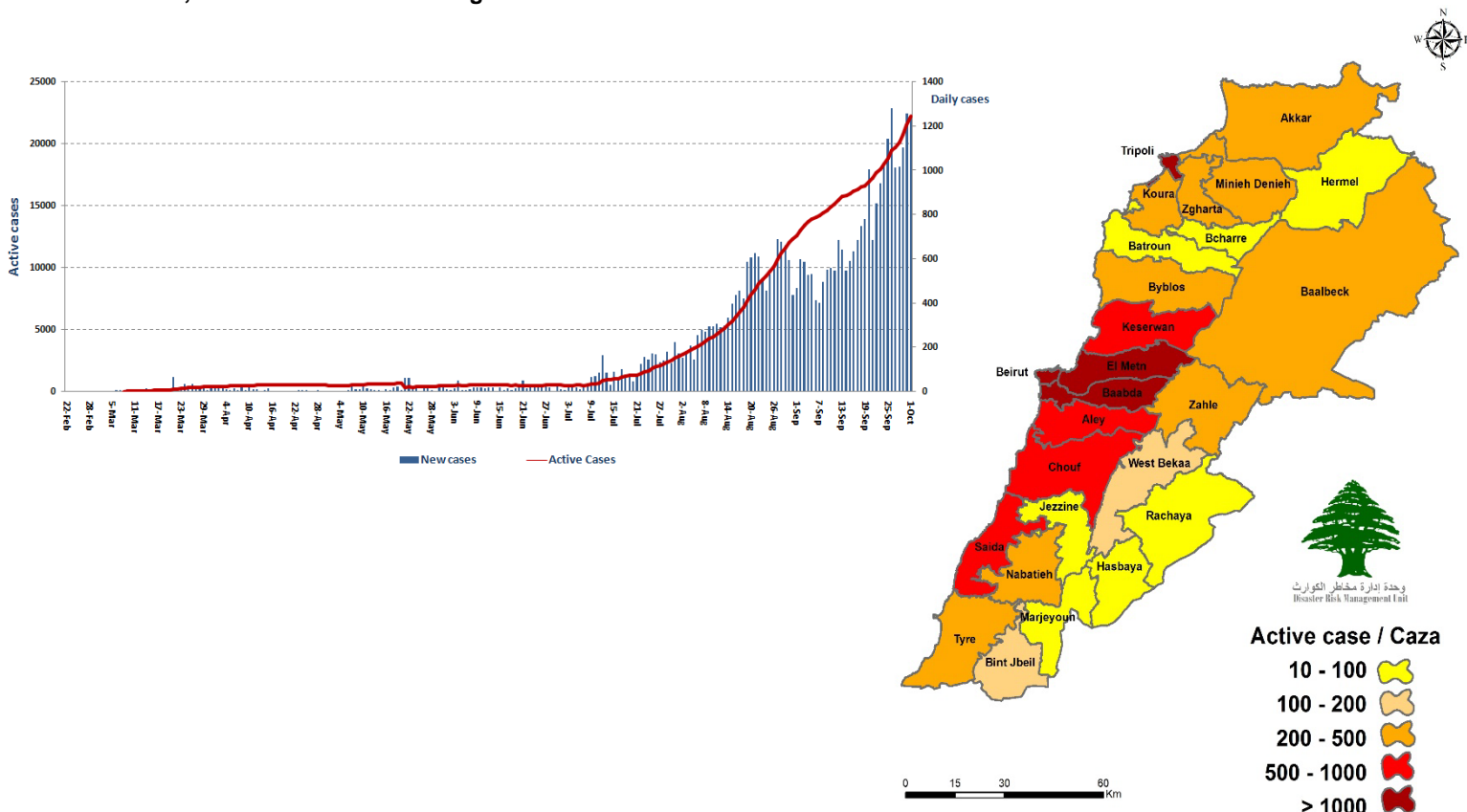
111 municipalities are at high risk and 56 municipalities are at medium risk from the spread of Coronavirus, as the Matn district registers the largest number of municipalities under The risk. The online platform to measure the risk of the spread of the new Corona virus: <https://bit.ly/DRM-RiskLevelInMunicipalities>

1,248 New Cases		40,868 Total Cases since 21.2.2020		374 Total Deaths	18,152 Total Recovered
1,242 Residents	6 Expats	39,184 Residents	1,684 Expats	7 New Deaths	587 New Recovered
1,041 Total Cases in the Health Sector		22,342 Total Active Cases		538 Hospitalized Cases	168 Total Cases in ICU
17 New Cases in the Health Sector		21,804 Cases in Home Isolation		370 Mild Cases	2 New Cases in ICU
811,624 COVID-19 Tests since 21.2.2020		Lebanon Status compared to the World			
617 COVID-19 Tests at Airport within 24 hrs.		12,507 COVID-19 tests for residents within 24 hrs.		Total Cumulative	40,868
				Total Deaths	374
				Deaths percentage	0,91%
				Total recoveries	18,152
					34,274,494
					1,020,628
					2.97%
					25,495,775

Ref: Ministry of Public Health Data

Number of Cases by Location

- 7,695 case is Under investigation



Beirut	94
Ras Beirut	5
Qreitem	1
Raouche	2
Hamra	11
Mseitbeh	2
Mar Elias	6
Unesco	1
Tallet El Khayyat	5
Mazraa	7
Borj Abi Haidar	4
Basta Fawka	2
Tariq Jdeedeh	12
Ras El Nabaa	5
Basta Tahta	1
Jeitawy	1
Ashrafieh	10
Others	19
Chouf	29
Damour	3
Saadiyat	1
Naameh	2
Chehim	1
Mazboud	1
Shammees	1
Darayya	1
Barja	4
Jiyyeh	3
Joun	1
Deir El Qamar	2
Baqaata	2
Niha	1
Others	6
Zghorta	16
Zghorta	1
Ardat	1
Majdlayya	6
Toula Jebbe	1
Meryata	2
Others	5
Jezzine	4
Kfarjarra	1
Jernaya	1
Others	2
Aley	49
Amrousieh	4
Hay El Sillom	7
Khaldeh	4
Al Oumara	1
Aramoun	11
Bshamoun	5
Kahhale	3
Qmatieh	1
Chemlan	1
Kfarmatta	2
Bhamdoun	2
Soufar	2
Ein Dara	1
Others	5
Marjeyoun	3
Bani Hayyan	1
Others	2

Baabda	154
Chiah	14
Jnah	1
Ouzai	1
Bir Hassan	3
Ghobeiry	16
Ein El Remmaneh	12
Forn El Shubbak	4
Haret Hreik	22
Lailaki	4
Borj El Barajneh	12
Mreijeh	9
Baabda	2
Brazilia	1
Hazmieh	6
Mar Takla	1
Hadat	29
Sabtieh	1
Kfarshima	2
Wady Shahrour	1
Bsaba	1
Hlalieh	1
Abadieh	1
Qossaybeh	1
Arayya	1
Arbaniyyeh	2
Others	6
Koura	20
Amyoun	1
Kfar Hazeer	1
Kousba	6
Majdel	1
Kefrayya	1
Dahr El Ein	2
Barsa	1
Others	7
Zahle	135
Hoch El Zaraanah	1
Mar Michael	1
Rassieh	2
Maallaqa	1
Karak	2
Saydet El Najat	1
Hoch El Oumara	3
Mar Elias	1
Forzol	1
Hezzerta	1
Ablah	2
Qaa El Reem	2
Ksara	10
Wady El Arayesh	1
Taalabaya	6
Saadnayel	25
Qab Elias	8
Bar Elias	18
Anjar	3
Majdel Anjar	7
Masnaa	1
Riyak	1
Terbol	2
Dalhamieh	5
Kfarzabad	1

Matn	158
Borj Hammoud	10
Nabaa	1
Sin El Fil	7
Jdeidet El Metn	5
Bouchrieh	6
Rawda	5
Sed El Bouchrieh	2
Sabtieh	4
Der Ma Roukoz	1
Dekwene	15
Antelias	8
Jal El Dib	1
Naqqash	1
Zalka	8
Byaqout	6
Dbayyeh	6
Aoukar	1
Mansouriyye	10
Fanar	11
Ein Saade	7
Roumieh	3
Bsalim	2
Mtayleb	1
Rabieh	2
Beit El Kukko	1
Qornet Chehwan	1
Rabweh	3
Beit Chaar	5
Deek El Mahdi	1
Mazraet Yashouh	3
Deir Tameesh	1
Zikrit	2
Qornet El Hamra	3
Broummana	2
Baabdat	1
Beit Merry	1
Dahr El Souwan	1
Bolonia	1
Mar Moussa	1
Baskinta	1
Others	7
Tripoli	85
Haddadeen	1
Al Tal	1
Qebbeh	10
Zahrieh	5
Tabbaneh	2
Mina	36
Qalamoun	1
Tripoli	25
Beddawi	4
Bint Jbeil	12
Aita El Shaab	1
Baraasheet	1
Chakra	1
Kfardouneen	1
Kafra	2
Debel	3
Others	3

Kesrwen	80
Sarba	2
Kaslik	2
Zouk Michael	10
Ghadir	3
Zouk Mosbeh	13
Adonis	7
Haret Sakher	2
Sahel Alma	1
Kfar Yassine	1
Adma	3
Ein El Safra	1
Bouar	4
Ajaltoun	3
Ballouneh	3
Sehaileh	4
Ein El Rihane	1
Jeita	2
Ghazir	2
Kfar Hbab	1
Fatqa	1
Ghosta	2
Batha	2
Kfour	1
Nammoura	1
Al Hayyata	1
Qleiaat	3
Ashqout	1
Rasheen	1
Kfardebian	1
Others	1
Saida	59
Hlalieh	6
Miyye W Miyyeh	2
Ein El Helwe	8
Majdelyoun	2
Bqosta	2
Ghazieh	2
Maghdoushe	1
Kawthryt Siyyad	1
Others	35
Tyre	36
Rasheedieh	3
Borj El Shemali	4
Jwayya	1
Maarakeh	1
Bazourieh	2
Deir Kifa	2
Tora	1
Hallousieh	1
Bedyas	1
Abbasiyyeh	1
Teir Harfa	1
Majdel Zoun	1
Shameh	1
Others	16
Western Bekaa	8
Souweiry	3
Marej	1
Others	4
Hermel	1
Hermel	1

Nabatieh	19
Nabatieh El Tahta	3
Nabatieh El Fawka	1
Kfar El Joz	1
Habboush	2
Kfour	1
Jbaa	1
Toul	1
Jebsheet	3
Mayfadoun	2
Adsheet El Shqeef	1
Ansar	1
Others	2
Rashayya	1
Kherbet Rouha	1

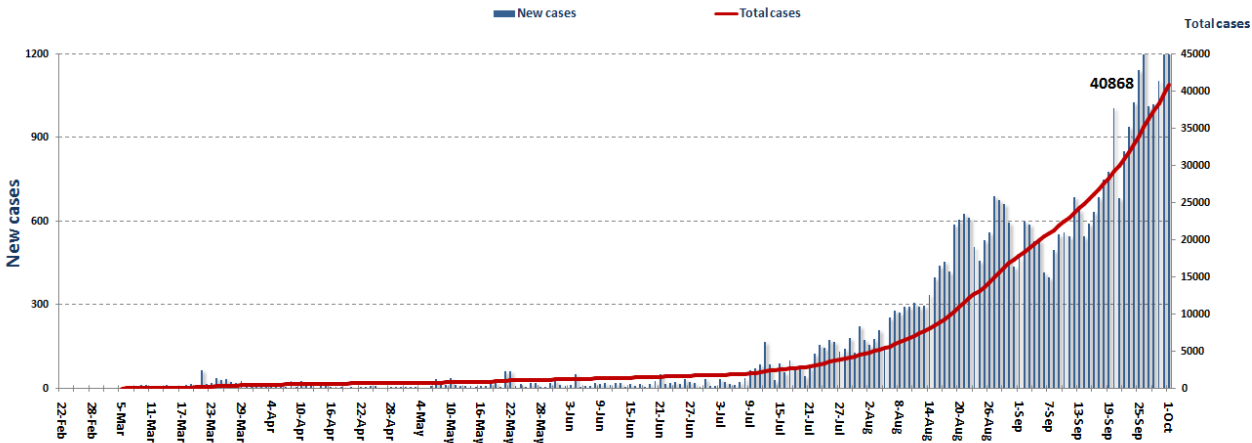
Others	29
Akkar	20
Halba	3
Zwareeb	1
Majdel Akkar	1
Nahr El Bared	1
Abdeh	4
Fneidek	1
Shadra	1
Mazraet I Nahriyyeh	1
Others	7
Menye Dunniiyye	16
Deir Amar	3
Menyeh	6
Kfar Habo	1
Bakhoun	1
Others	5

Jbeil	29
Jbeil	3
Mastita	1
Blat	2
Edde	1
Amchit	7
Halat	2
Hosrayel	2
Jeddayel	1
Nahr Ibrahim	4
Mashhalan	1
Hboub	1
Tartej	1
Others	3

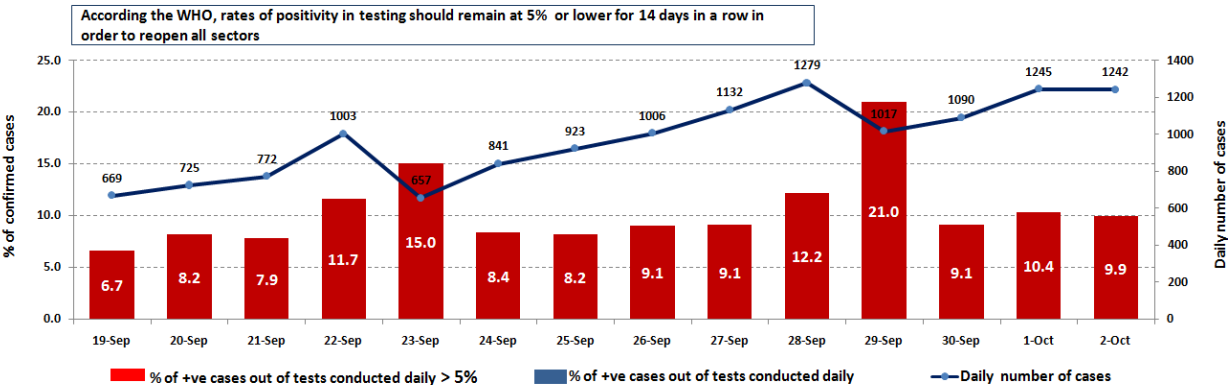
Baalbak	22
Hadat	1
Baalbak	2
Deir El Ahmar	2
Barqa	1
Bednayel	2
Beit Chama	4
Chmestar	5
Hoch Sneid	1
Brital	1
Others	3

Others	187
--------	-----

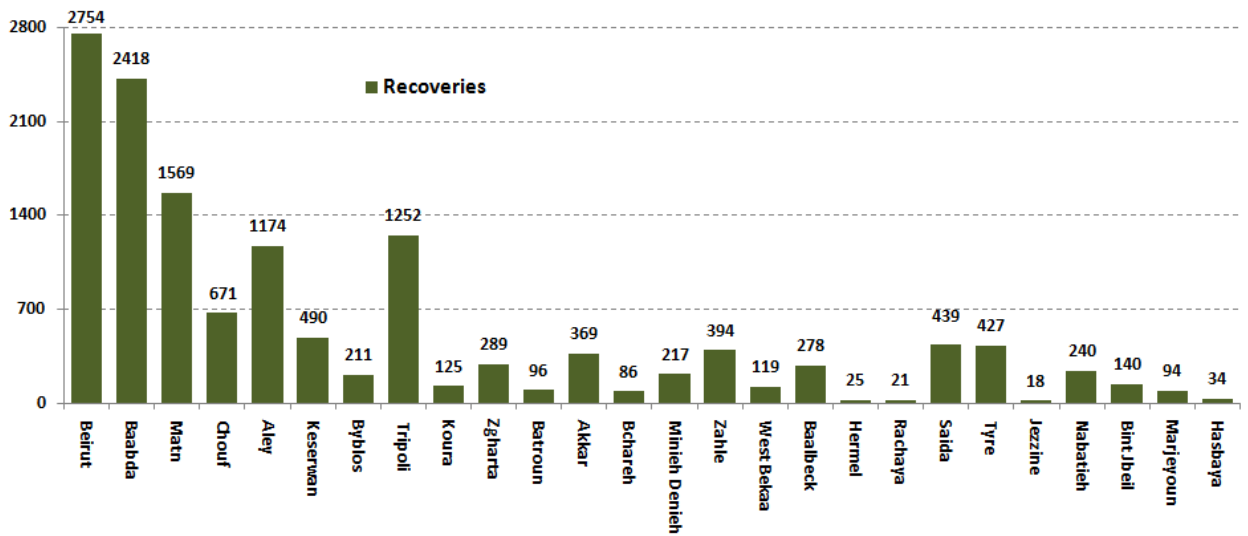
Cases per day



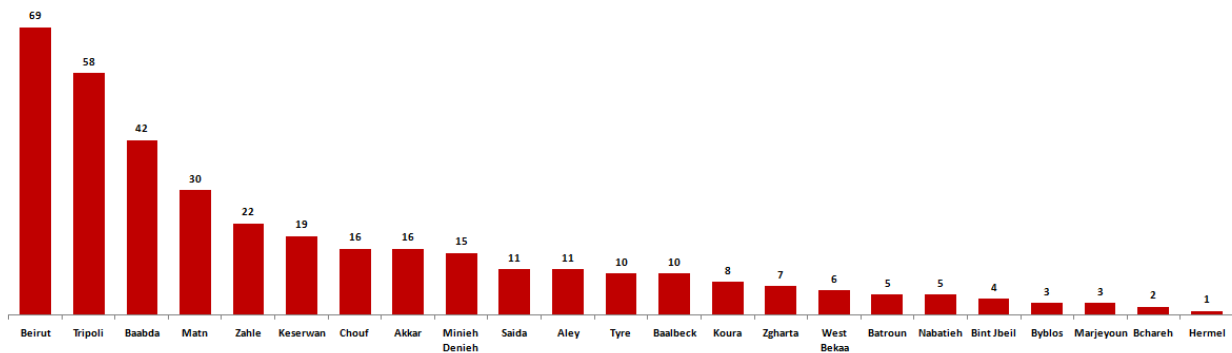
The percentage of positive cases out of the number of daily checks (16 September to 30 September 2020)



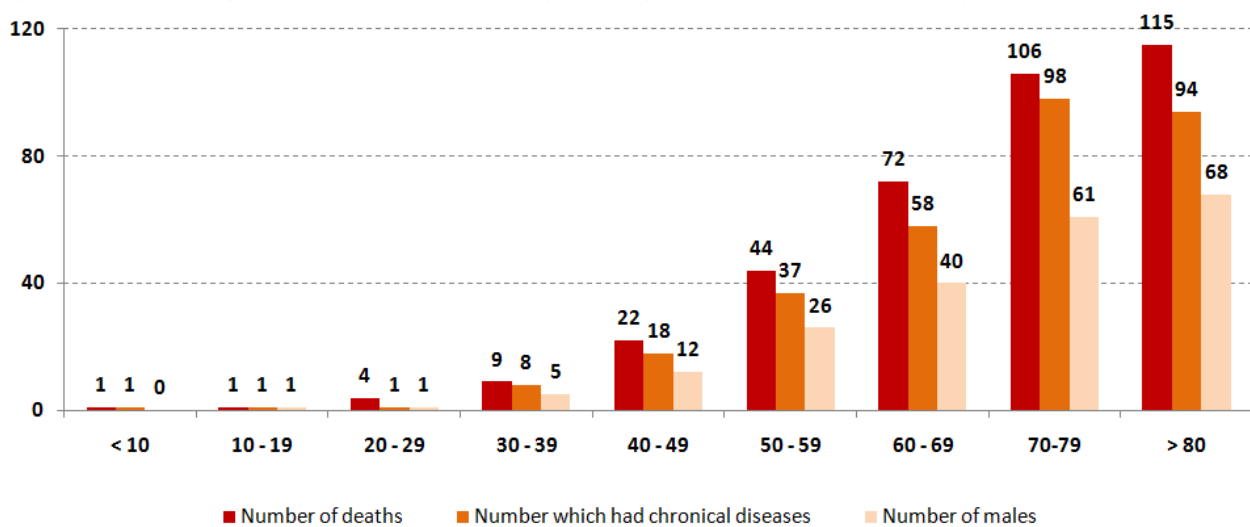
Recoveries



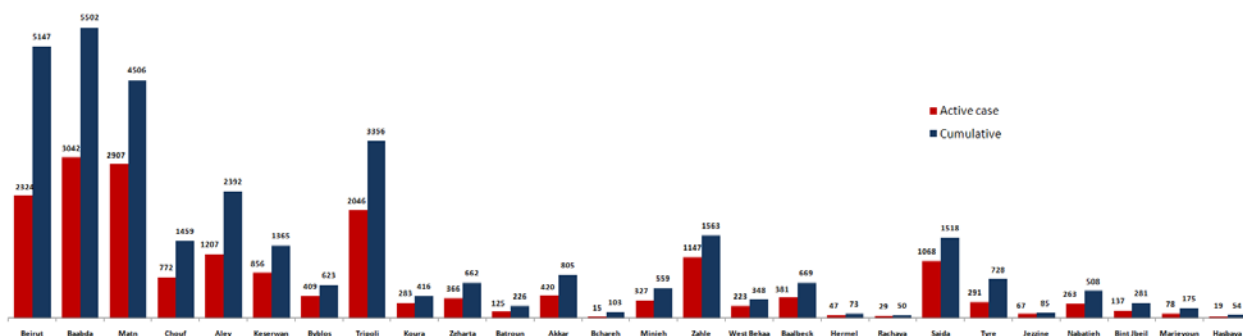
Distribution of deaths by Governorates



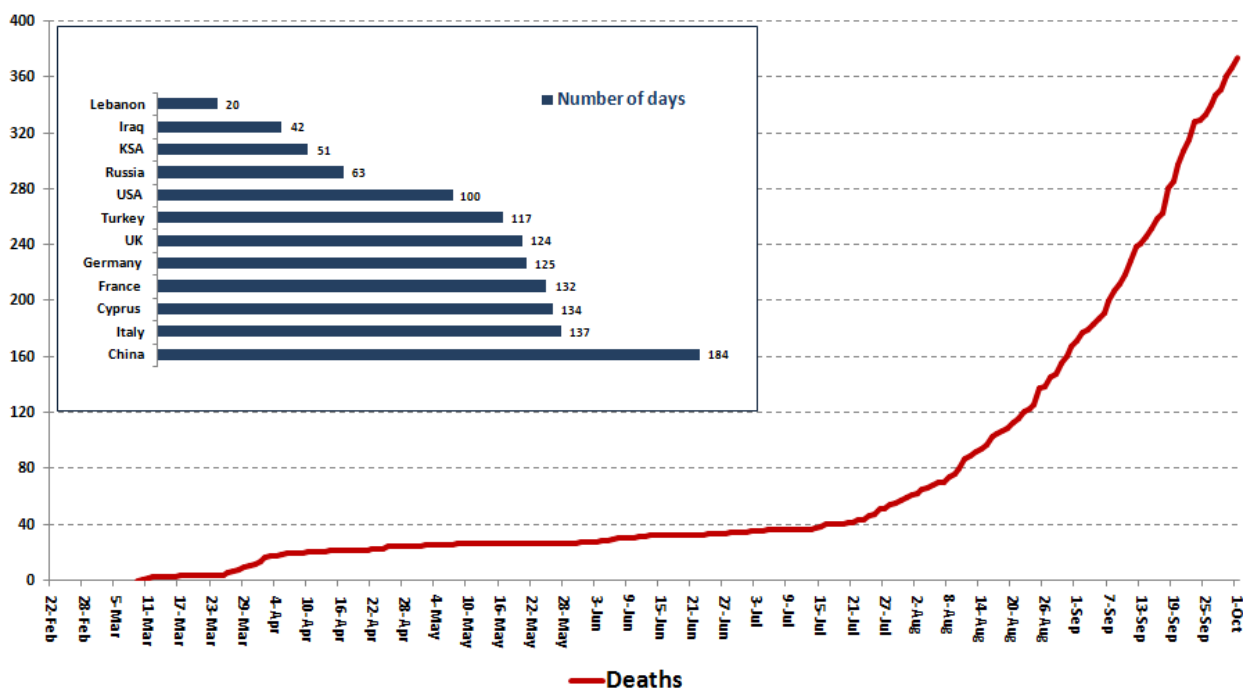
Distribution of deaths by Age



Distribution of Active Cases by Districts



Comparison of the rate of doubling of the number of deaths in Lebanon with other countries (death doubling rate)

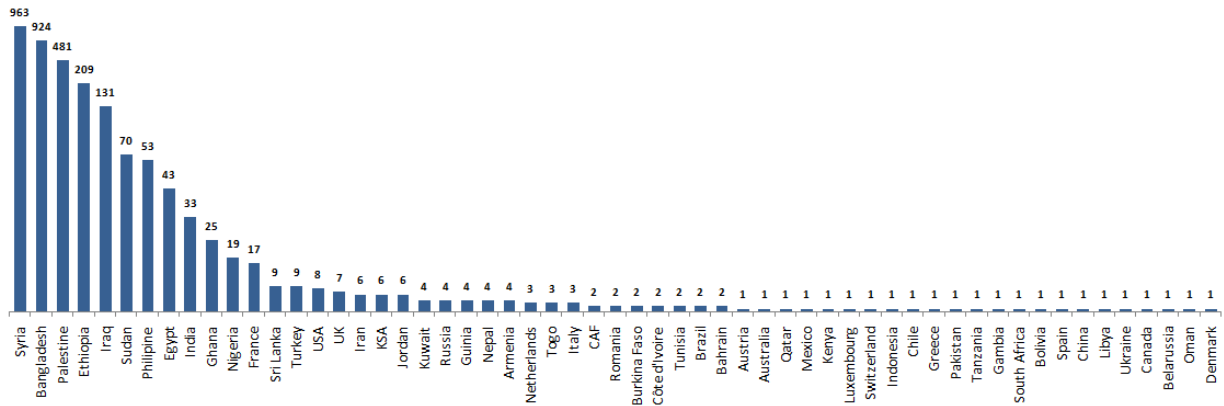


The distribution of the recorded deaths during the past 24 hours

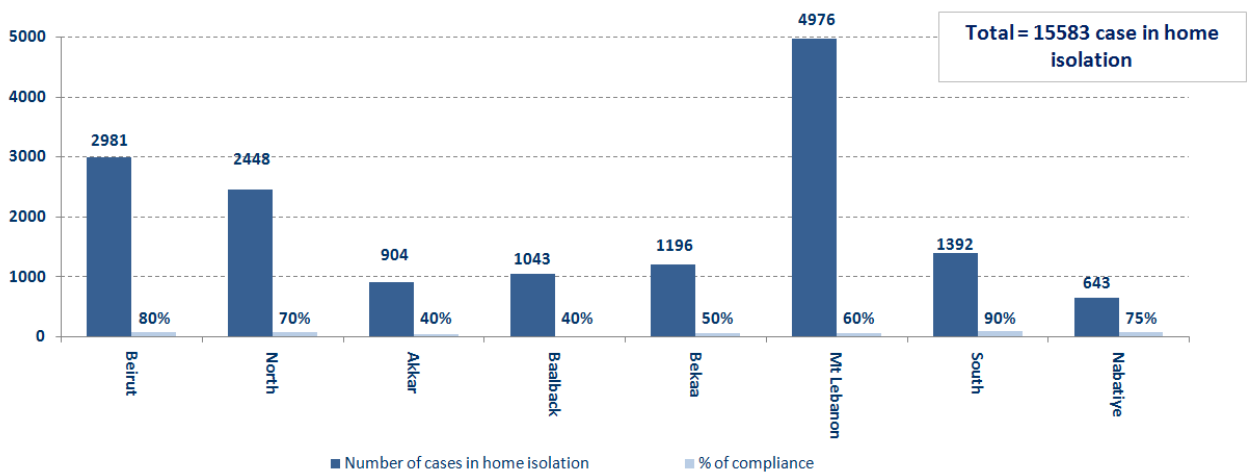
Hospital	Residence	Gender	Age	Chronic
El Rasi	Akkar	Female	77	Yes
Saint George	Aley	Male	81	Yes
Saint George	Nabatieh	Male	83	Yes
Saint George	Baabda	Male	59	
Hamchari	Chouf	Female	42	Yes
El Roum	Beirut	Male	83	Yes
Rasul El Aazam	Aley	Male	46	

Distribution of cases by nationality

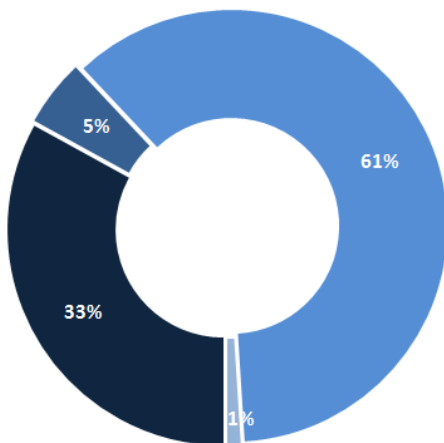
Lebanese : 37780 cases out of 40868 (88%)



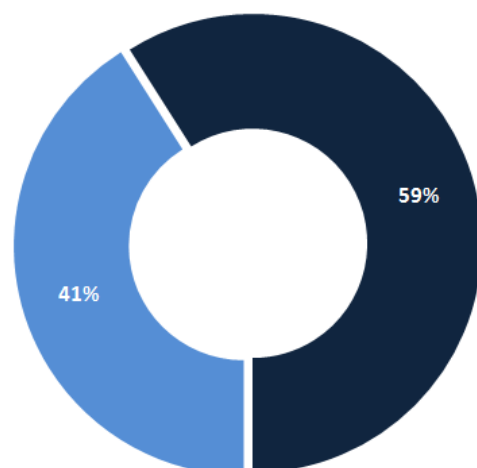
Number of individuals in home isolation and percentage of commitment to isolation



Exposure



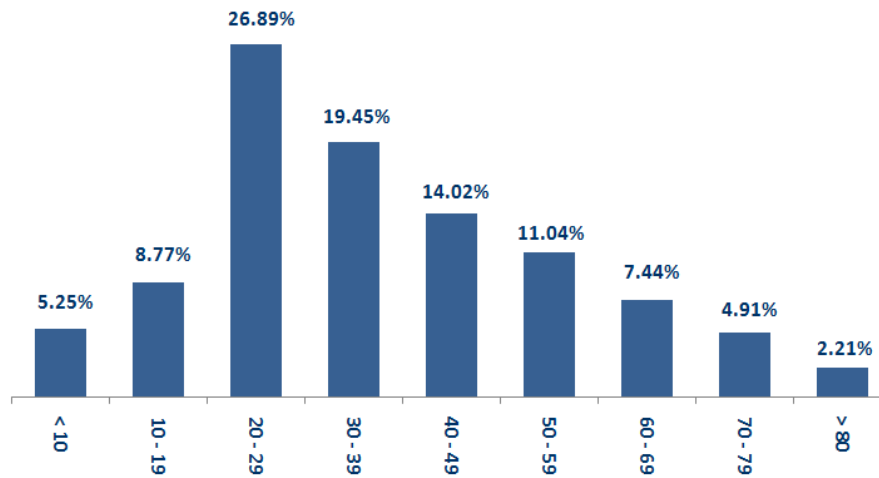
Distribution according to gender



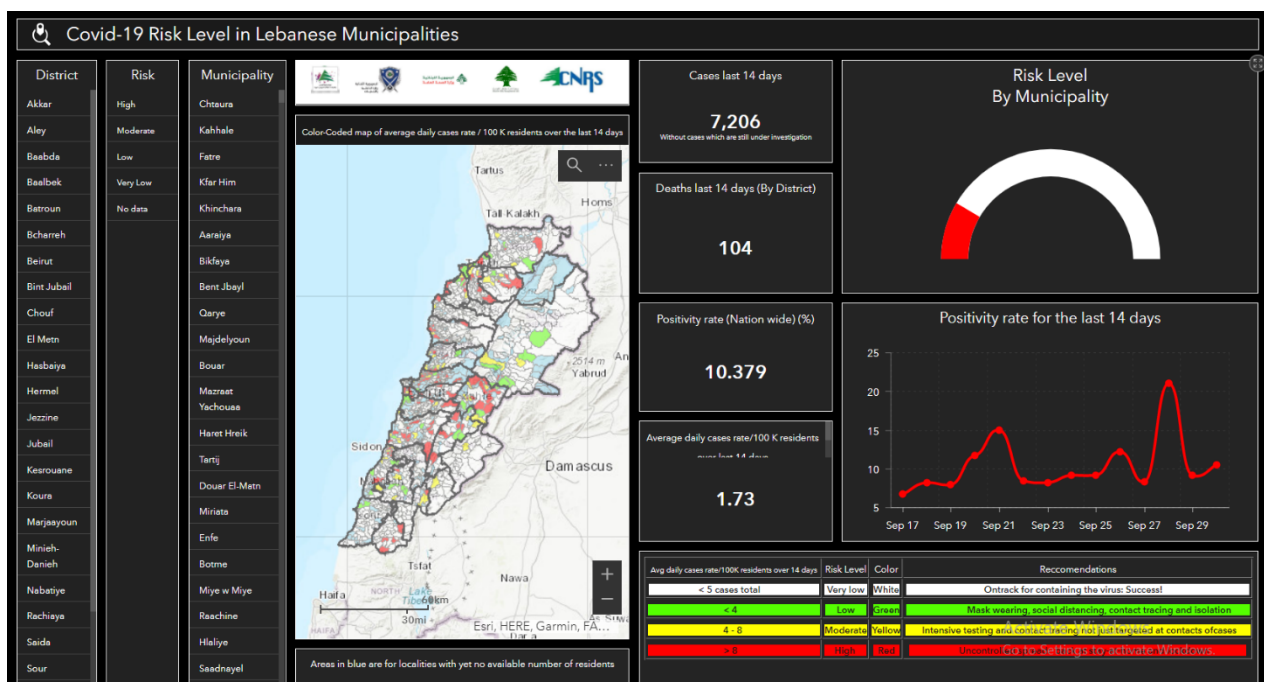
Female Male

Contact with confirmed case Travel related Under investigation Unidentified source

Distribution by age



The Online platform to measure the level of risk of the spread of the new Corona virus by district



This interactive platform allows you to know the level of risk of spreading the kurna virus according to districts, based on the number of cases registered daily and the number of residents in each district. For more information on a daily basis, you can access the following link:

<https://bit.ly/DRM-RiskLevelInMunicipalities>

The number of beds available for those infected with Coronavirus and the occupancy rate



For daily information on all the details of the bed distribution available for Covid-19 patients in the various governorates according to the hospitals:

Computer: <https://bit.ly/DRM-HospitalsOccupancy-PC>

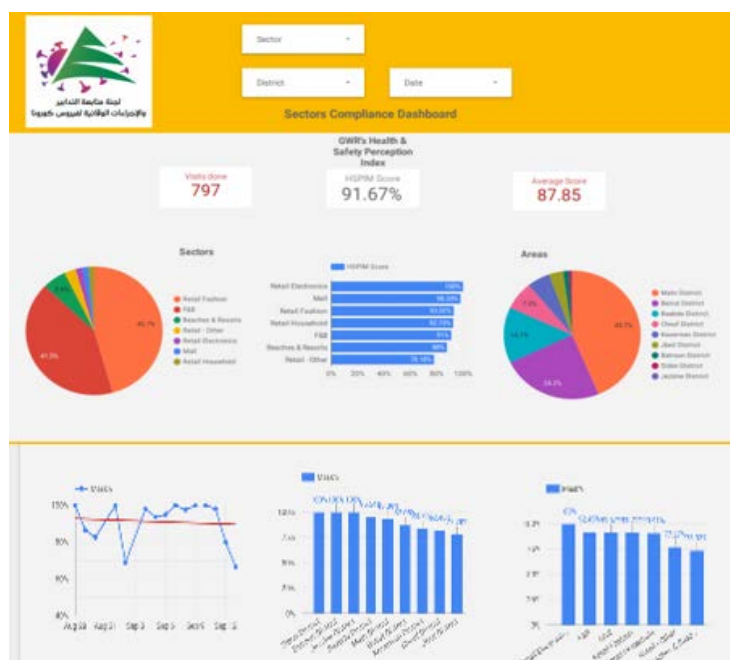
By phone: <https://bit.ly/DRM-HospitalsOccupancy-Mobile>

Online platform to track sector commitment in general mobilization procedures

Based on the recommendation issued by the National Committee for Follow-up of Preventive Measures and Measures to Confront the Coronavirus to open all sectors, provided that the general mobilization procedure (safe distance, muzzle, and hand sterilization) be applied, a special electronic platform was created that allows monitoring and measuring the percentage of commitment by various sectors on an ongoing basis.

The detailed results can be viewed directly at the following link:

<http://bit.ly/covidsectordata>



Decisions and actions taken – 01/10/2020

Ministry of Public Health

The Ministry of Public Health announced an agreement between it and the guarantors and private hospitals, according to which the official tariff was set in the Ministry of Public Health for personal protection supplies that are used to prevent epidemic diseases in the treatment of the Corona epidemic, and the daily cost of one patient with the Coronavirus in the hospital was modified to cover these requirements to become 200,000 LBP for the regular room and 400,000 LBP for a building in the intensive care room.

The Ministry of Public Health reported that PCR examinations had been completed for flights that arrived in Beirut and were performed at the airport on 9/28/2020, in addition to the first batch of flight checks that arrived on 9/29/2020; The results showed that there was one positive case on the flight coming from Cairo on board the Middle East Airlines Flight 307 on 9/28/2020.

Lebanese Red Cross

233,758	Number of PCR tests transferred to laboratories	46,634 (46 New)	Number of additional ambulance centers ready to respond	48	ambulance centers	5,194 (58 New)	cases transferred to hospitals
166	Number of volunteers trained to transfer PCR tests	1,498	Number of trained paramedics	8,706 (4 New)	total number of respondents	79,019	number of those benefiting from awareness *sessions
967	The number of university volunteers trained to follow up on prevention measures in companies and institutions	291	Number of university volunteers trained to conduct awareness sessions	550	total LRC volunteers for covid19	8,567 (28 New)	number of trained managers for isolation centers
4,238 (3 New)	Number of beneficiaries from educational electronic platforms COVID-19	92,393 (70 New)	Number of distributed equipment	1,240,401	total distributed posters, brochures, and flyers on covid19 prevention	567 (3 New)	number of prisons that have been disinfected

General Directorate of State Security

- Follow up the implementation of the required security and preventive measures at the airport, ports and border crossings.
- Notification of the number of cases registered in the various districts and cases in home quarantine.
 - 5 new cases of Coronavirus were reported in Public Security.
 - Reporting of two new injuries among the Lebanese army.
 - Reporting a new injury in the Faculty of Social Sciences at the Lebanese University, and 4 new injuries in the Health Insurance Office at the American University.
- 4 new deaths were reported in Nahr Al-Bared camp in the north as a result of the epidemic.
- The report of the closure of the Bekaa Governorate center in Zahle by a decision of the Governor of the Bekaa until 5/10/2020, after it was confirmed that the head of a department in the governorate was infected with the Coronavirus.
- Reporting the closure of the Civil Affairs Department centers in Zahle and the Bekaa until October 6, 2020, after it was proven that the employees were injured.

Beirut	South	North	Akkar	Begaa	Nabateih	Baalbek Hermel	Mount Leb
50%	52%	57%	43%	N/A	70%	5%	30%

General Directorate of Internal Security Forces

- Supporting the municipalities in isolating the town of Aramoun (Aley), the Radisson Hotel in Ain Mreisse (Beirut) and the Golden Tulip Hotel in Hamra (Beirut)
-
- Writing arrest records against violators of the general closure decision

The number of seizure records during the past 24 hours					The total number of records that have been organized against violators of the general mobilization decisions since 03/08/2020	
Written records of violating institutions (absorptive capacity and preventive measures)				0		
Written records of persons violating the decision to wear a mask				0	Beirut	20,642
Written records of people violating the general mobilization decision (Aragil* and social distancing)				9	Mount Leb	18,813
Total				9	Begaa	8,063
					North	6,784
Beirut	Mount Leb	Begaa	North	South	South	6,883
0	0	4	0	5	Total	61,185

Ministry of Public Works and Transportation

Departing Flights		Arriving Flights	
Number of Flights	29	Number of Flights	30
Number of Departing Individuals	3,263	Number of Arrivals	2,528

Port	Entered			Left		
	Import	Direction	#	Export	Direction	#
Beirut				Containers	Mersin	1
Jouneih	Fuel Oil	Jeyyeh	1			
			1			1

General announcements

N/A

Note: The decisions can be found at www.drm.pcm.gov.lb

Examples of lack of adherence to safety measures

- Demand gatherings and demonstrations.
- Failure to comply with the preventive measures and procedures required in a number of stores and markets (putting on a muzzle or face mask, sterilizing hands, maintaining a safe distance).
- Non-compliance with the 50% occupancy rate in several restaurants and amusement game centers.
- Gatherings for social events.
- Failure of those in contact with confirmed cases to adhere to home isolation procedures until the results of the laboratory tests are issued.

A list of the laboratories accredited by the MoPH to conduct PCR tests

المختبرات الحكومية المؤهلة لإجراء التشخيص المخبري لفيروس كورونا بطريقة الـ RT-PCR

الموقع	المختبر
بيروت	مستشفى رفيق الحريري الجامعي RHUH
حلبا	مستشفى حلبا الحكومي
طرابلس	مستشفى طرابلس الحكومي
البترون	مستشفى البترون الحكومي
كسروان	مستشفى فتوح كسروان الحكومي (البوار)
البيقطة	مستشفى نبيه بري الحكومي الجامعي
تبنين	مستشفى تبنين الحكومي
بنت جبيل	مستشفى بنت جبيل الحكومي
بعلبك	مستشفى بعلبك الحكومي
زحلة	مستشفى الرئيس الياز اليراي الحكومي

المختبرات الخاصة المؤهلة لإجراء التشخيص المخبري لفيروس كورونا بطريقة الـ RT-PCR

الموقع	المختبر
بيروت	مستشفى الجامعة الأميركية AUBMC
بيروت	مستشفى أوتيل ديو الجامعي (HDF) Hotel-Dieu de France
بيروت	مختبرات رودولف ميرييو (الجامعة اليسوعية - المتحف) Laboratoire Rodolphe Mérieux (Université Saint-Joseph)
بيروت	مستشفى القديس جاورجيوس الجامعي Saint-George Hospital - UMC
بيروت	مستشفى المقاصد Makassed General Hospital
بيروت	مستشفى رزق الجامعي LAU Medical Center - Rizk Hospital
بيروت	مستشفى اللبناني الجعيتاوي الجامعي Hôpital Libanais Geitawi - CHU
بيروت	مستشفى الوردية Hôpital Notre-Dame du Rosaire
بيروت	مختبر مركز الأطباء Doctor 's Center
بيروت	مختبر فونتانا (الحمرا) Fontana Laboratories
بيروت	مختبر الأمن العام (العنلثة)
بيروت	مختبرات جبر وغرة Laboratoire Jabre-Ghorra
بيروت	مختبر السان مارك Saint Marc Medical & Diagnostic Center
الغبيري	المختبرات الحديثة Laboratoire Moderne (Modern Lab- Berjaoui)
الغبيري	مستشفى الساحل Sahel General Hospital (SGH)
الغبيري	مستشفى الزهراء الجامعي
برج الراجنة	مستشفى الرسول الأعظم Al Zahraa Hospital - UMC
حارة حريك	مستشفى بهمن Al Rassoul Al Aazam Hospital Bahman Hospital
حارة حريك	مختبر ناتيونال دياغنوستك سرفيس كومباني National Diagnostic Services Company (NDSC)
المرجة	مختبر الدكتور محمود عثمان - مركز التحاليل الطبية Medical Diagnostic Center
الجناح	مختبر أميركن دياغنوستك سنتر American Diagnostic Center (ADC)
بعنا	مستشفى جبل لبنان Mount Lebanon Hospital
بعنا	مستشفى السان جورج الحدث Hôpital Saint-George – Hadath
بعنا	مختبر الهادي Al Hadi Laboratory
بعنا	مختبر INOVIE-Liban

Hôpital du Sacré- Coeur	مستشفى قلب يسوع	الحازمية
Clinigene	مختبر كلينيجان	الحازمية
Hôpital Dr.Samir Serhal	مستشفى سرحال	المن
Transmedical for Life	مختبر ترانسميديكال فور ليف	المن
Haroun Hospital	مستشفى هارون	الزلفا
Bellevue Medical Center (BMC)	مستشفى بلفو	المنصورة
Hôpital Albert Haykal	مستشفى هيكال	الكورة
Centre Hospitalier du Nord (CHN)	مركز الشمال الإستشفائي	زغرتا
Mazloum Hospital	مستشفى المظلوم	طرابلس
Al Mounla Hospital	مستشفى المنلا	طرابلس
Nini Hospital	مستشفى النيني	طرابلس
LMSE - المعهد العالي للدكتوراه، الجامعة اللبنانية	مختبر ميكروبيولوجيا الصحة والبيئة	طرابلس
CHU - Notre-Dame des Secours	مستشفى سيدة المعونات الجامعي	جبل
Lab Akiki & Boulos	مختبر عقيقي وبولس	جبل
Centre Médical Wakim	مختبر ولكيم	حولية
Ain Wazein Hospital	مستشفى عين وزين	الشوف
Hammoud Hospital UMC	مستشفى حمود الجامعي	صيدا
Al Karim Medical Laboratory (KML)	مختبر الكريم	صيدا
Sheikh Ragheb Harb Hospital	مستشفى الشيخ راجب حرب	البيشة
Sabbah Diagnostic Center (SDC)	مختبر الصباح	البيشة
Jabal Amel Hospital	مستشفى جبل عامل	صور
Mashrek Diagnostic Center (MDC)	مختبر المشرق	صور
Dar Al Amal University Hospital	مستشفى دار الأمل الجامعي	بعلبك
Khoury General Hospital	مستشفى خوري	زحلة
Medical Care Center (MCC)	مختبر ميديكال كير سنتر	زحلة

مختبرات المستشفيات العسكرية

Hôpital Militaire Central	المستشفى العسكري المركزي في بيروت	بيروت
---------------------------	-----------------------------------	-------

المختبرات المؤهلة لأخذ عينات "المسحات الأنفية" بطريقة Drive- thru

Medical Diagnostic Treatment Center (MDTC)	مختبر ميديكال دياغنوستيك تريتمانت سنتر (الحمراء)	بيروت
MedLab SAL CIC ALS	مختبر ميد لاب (الحمراء - الجفيلور)	بيروت
Itani Medical Laboratories	مختبرات عيتاني (المزرعة)	بيروت
ABC Laboratories	مختبر أ ب سي	الأشرفية
Mouawad Medical Laboratory	مختبرات معوض الطبية	الشياح
Rihan Medical Center	مختبرات الشياح (د. فؤاد ربحان)	الشياح
Expert Lab	مختبر إكسبرت لاب	المنصورة
Life LAB	مختبر لايف لاب	بعلبك
Riyak Hospital	مستشفى الرياق	رياق