



Lebanon National Operations Room Daily Report on COVID-19

Sunday, November 01, 2020

Report #228

Time Published: 10:30 PM

New in the report:

- Decision of the Ministry of Interior and Towns No. 1358 dated 11/1/2020 regarding the continued closure of some villages and towns due to the high number of corona injuries in them.
- The names of the laboratories that did not specify the district, the place of residence, or the phone number for a number of positive cases, which affects the tracking of cases and the identification of contacts to conduct the necessary checks within the past 24 hours.

1,389 New Cases		82,617 Total Cases since 21.2.2020		643 Total Deaths	42,904 Total Recovered
1,384 Residents	5 Expats	80,259 Residents	2,358 Expats	6 New Deaths	1,280 New Recovered

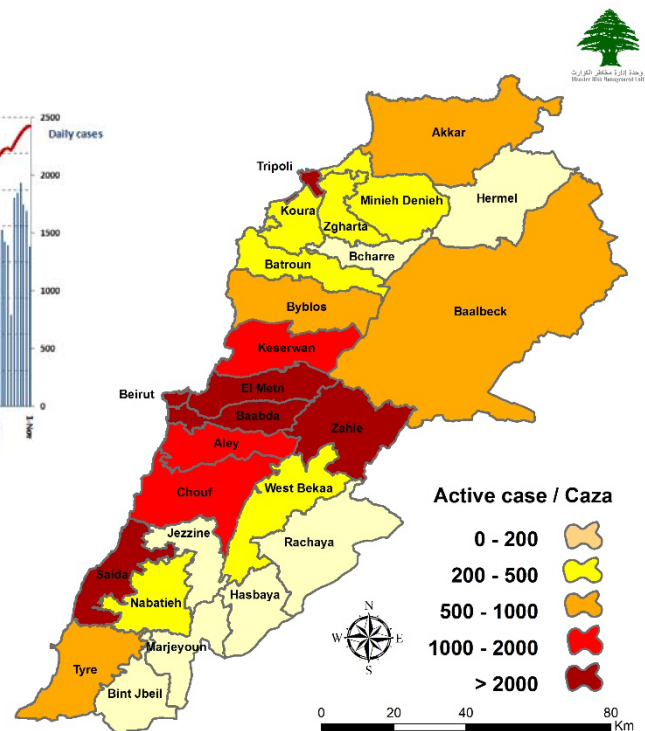
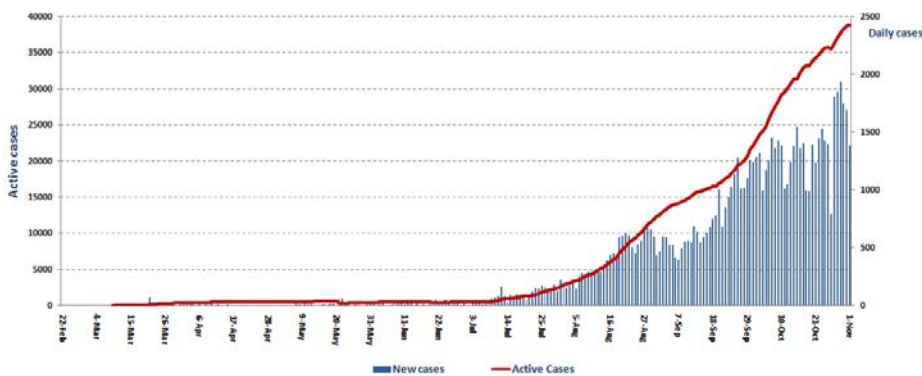
137 Deleted Status due to its recurrence	1,428 Total Cases in the Health Sector	39,070 Total Active Cases	790 Hospitalized Cases	270 Total Cases in ICU
	5 New Cases in the Health Sector	38,280 Cases in Home Isolation	520 Mild Cases	0 New Cases in ICU

1,183,167 COVID-19 Tests since 21.2.2020	Lebanon Status compared to the World			
1,153 COVID-19 Tests at Airport within 24 hrs.	7,613 COVID-19 tests for residents within 24 hrs.	Total Cumulative	82,617	46,709,156
		Total Deaths	643	1,203,771
		Deaths percentage	0,77%	2,57%
		Total recoveries	42,904	33,639,417

Ref: Ministry of Public Health Data

Number of Cases by Location

- 14,855 case is Under investigation



Beirut	93
Ein Al Mreisseh	1
Manara	1
Qoreitem	2
Rouche	2
Hamra	5
Ein Al teeneh	1
Mseitbeh	8
Mar Elias	1
Tallet Al Khayat	3
Dar Al Fatwa	1
Zarif	7
Mazraa	9
Borj Abi Haidar	3
Tariq Al Jdideh	10
Ras Al Nabaa	8
Basta Tahta	1
jemmayze	1
Ashrafieh	19
Others	10
Baabda	112
Chiah	4
Jnah	4
Ouzai	5
Bir Hassan	1
Ghobeiry	4
Ein Al Rimmaneh	1
Forn AL Shebbak	8
Tahweetet Al Nahr	1
Haret Hreik	19
Lailaky	3
Borj Al Brajneeh	16
Mreijeh	9
Tahweetet Ghadir	6
Hadat	10
Kfarshima	5
Bsaba	1
Salima	3
Rweisat Salima	1
Hasbaya Al Metn	1
Others	10
Aley	59
Amrousieh	3
Jhay El Sillom	11
Qebbeh	3
Khaldeh	2
Al Oumara	6
Aramoun	13
Bshamoun	8
Aley	4
Bkheshtay	1
Ein El Jdideh	1
Baisour	2
Qabr Shmoun	1
Btater	1
Meshferfe	1
Others	2

Chouf	46
Damour	1
Naameh	2
Haret Al Naameh	4
Chhim	11
Mazboud	2
Daraya	1
Ketermaya	1
Anout	1
Sibline	2
Barja	2
Benwaty	1
Jadra	1
Wady Al Zainy	1
Werdaniyeh	1
Mgheirieh	1
Zaarourieh	1
Ein Zhalta	1
Baaqline	1
Baqaata	1
Niha	2
Ammatour	1
Mazraa	1
Mrasty	2
Others	4
Tyre	40
Tyre	4
Bass	2
Rashidieh	2
Maashouq	1
Borj AL Shemaly	1
Debaal	1
Aiteet	2
Barish	1
Qana	1
Maarakeh	1
Maaroub	1
Saddiqeen	4
Hmeiry	1
Bazourieh	1
Teir Debba	2
Shhour	1
Hallousieh Tahta	1
Bedyas	1
Abbasieh	2
Shabriha	1
Mansoury	1
Alma Shaeb	1
Others	7
Jezzine	7
Jezzine	4
Bkassine	1
Kfarhouna	1
Jrnaya	1
Hermel	4
Hermel	3
Al Qasr	1

Kesrwen	52
Sarba	4
Kaslik	1
Zouk Michael	6
Ghadir	2
Zouk Mosbeh	3
Adonis	5
Haret Sakher	4
Tabarja	3
Adma & Dafneh	2
Safra	3
Oqeibeh	1
Ajaltoun	1
Ballouneh	3
Ghazir	3
Maamltein	1
Aramoun	1
Sehlieh - Kfour	1
Ashkout	1
Feitroun	1
Raashine	3
Kfardeblian	1
Faraya	2
Zahle	92
Hoch Zaraanah	1
Rassieh	1
Maallaqa	4
Karak Nouh	4
Saidet Al Najat	1
Hoch Al Oumara	1
Arady	4
Forzol	2
Naby Ayla	1
Hazzarta	2
Ablah	1
Ksara	5
Wady Al Arayesh	3
Jlala	1
Taalabaya	10
Jdita	1
Saadnayel	2
Qab Elias	5
Bouarej	1
Bar Elias	6
Hoch Mous	1
Majdel Anjar	4
Riyak	8
Hoch Hala	1
Ali AL Nahry	1
R'eet	1
Terbol	3
Ein Kfar Zabad	1
Kfar Zabad	2
Others	14
Hasbaya	2
Habbarieh	1
Ein Qanya	1

Matn	112
Borj Hammoud	15
Sin El Fil	5
Jesr Al Basha	1
Jdeidet El Metn	8
Bouchrieh	3
Dora	5
Rawda	1
Sed Al Bouchrieh	2
Sabtieh	5
Dekweneh	10
Mkalles	1
Antelias	6
Jal El Dib	5
Naqqash	3
Amaret Chalhoub	1
Zalqa	4
Byaqout	1
Dbayyeh	5
Mansourieh	4
Fanar	4
Roumieh	2
Bsalim	4
Nabayh	1
Mteileb	3
Rabieh	1
Rabwe	1
Deek AL Mahdy	1
Mazraet Yashouh	4
Bekfayya	2
Qornet Al Hamra	1
Broummana	1
Rweise	1
Beit Mery	2
Mrouj	1
Dhour Shweir	1
Douar	1
Baskinta	1
Baqaata Al Nahr	1
Others	3
Byblos	34
Byblos	5
Mastita	5
Qartaboun	1
Blat	3
Amshit	7
Halat	3
Hosrayel	3
Nahr Ibrahim	1
Adonis	1
Hboub	1
Sheikhan	1
Qartaba	2
Others	1
Bcharre	4
Bcharre	4

Akkar	20
Halba	3
Jdeidet Al Joumeh	1
Mashha	1
Old Akkar	2
Bebnine	1
Berqayel	1
Qarqaf	2
Fneidek	2
Beereh	1
Mashta Hammoud	1
Akroum	1
Others	4
Koura	9
Kfar Saroun	1
Kfar Hazir	1
Anfeh	1
Dahr El Ein	4
Others	2
Zghorta	8
Zghorta	1
Haref	3
Majdlayya	1
Khaldieh	1
Daraya	2
Batroun	7
Thoum	2
Kfar Abida	1
Shekka	3
Others	1

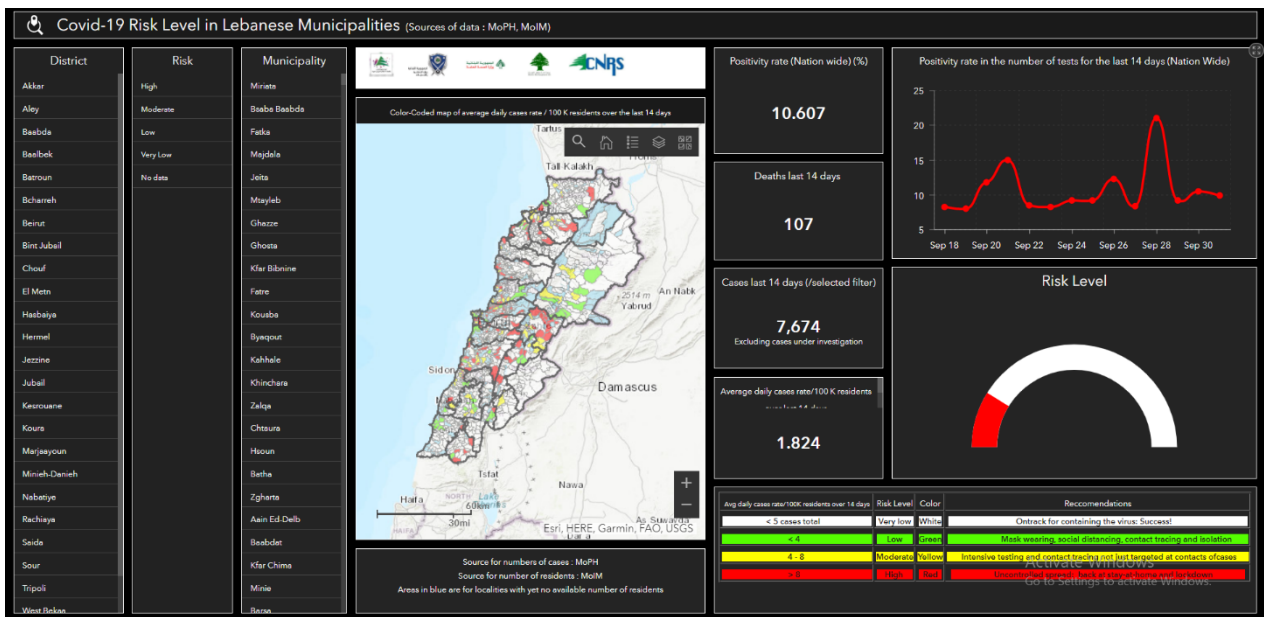
Tripoli	42
Zeitoun	1
Bab Al Raml	1
Qebbeh	7
Zahrieh	3
Tabbaneh	1
Al Mina 1	3
Bsatine AL Mina	1
Beddawy	2
Madina Al Jadida	6
Beddawy Camp	3
Others	14
Menyeh Duniyyeh	13
Deir Amar	1
Menyeh	5
Asoun	1
Beit Al Faqs	1
Sfeereh	1
Bakh'oun	2
Others	2
Western Beqaa	14
Jeb Jennine	1
Qar'oun	2
Manara Hammara	5
Hoch Hareemeh	1
Sweiry	1
Suhmor	1
Lebbaya	1
Al Marj	1
Others	1
Marjeyoun	7
Marjeyoun	1
Ebl El Saqy	1
Khiyam	1
Qabrikha	1
Majdel Silim	2
Others	1

Baalbek	44
Baalbek	12
Doures	2
Addous	1
Fakha	2
Al Ein	1
Shaeth	2
Rasm Al Hadath	1
Temnine Tahta	1
Chmestar	2
Taraya	1
Ser'een AL Fawka	1
Naby Sheeth	1
Hor Taala	1
Brital	3
Bouday	2
Others	11
Rashayya	7
Aiha	1
Ein Harsha	1
Yanta	1
Others	4
Jezzine	7
Jezzine	4
Bkassine	1
Kfarhouna	1
Bint Jbeil	16
Bint Jbeil	1
Ein Ebl	3
Rmeish	5
Aita Al Jabal	1
Kherbet Silim	1
Rshaf	1
Debel	4

Saida	42
Old Saida	5
Saraya	1
Hlalieh	1
Haret Saida	2
Qannabeh	1
Miyye w Miyye	1
Ein El Helwe	2
Abra	3
Ein El Delb	1
Balieh	3
Sarafand	5
Bisarieh	1
Bnaafoul	1
Anqoun	1
Kfar Melky	1
Others	13
Nabatieh	15
Nabatieh Tahta	1
Nabatieh Fawka	2
Kfar Rimman	1
Arab Salim	1
Deir Al Zahrany	1
Harouf	1
Meifadoun	1
Adshit Shqeef	1
Ansar	1
Eastern Zoutar	2
Qseibeh	1
Others	2

Others	479
---------------	------------

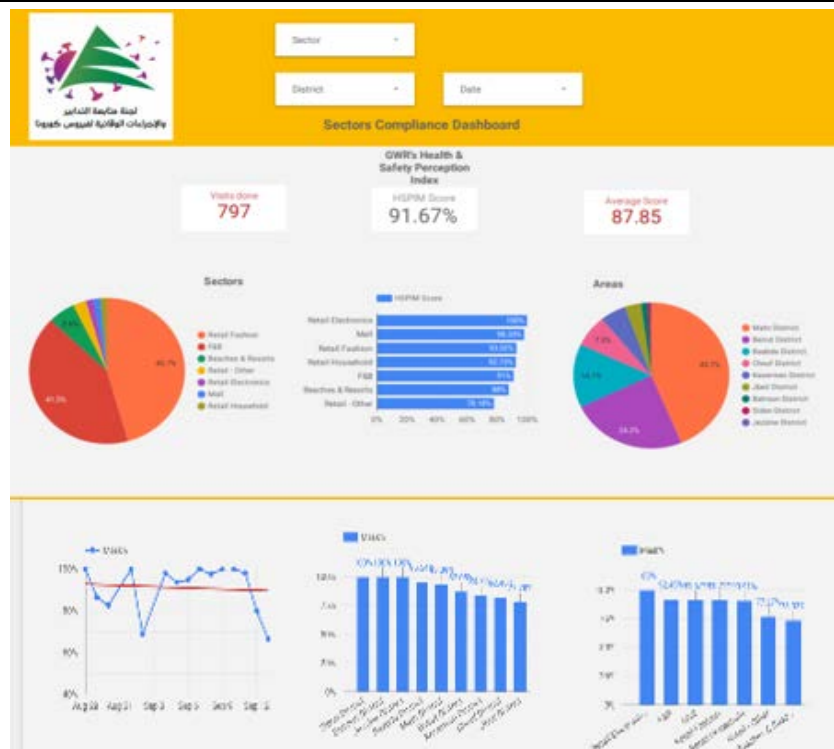
The Online platform to measure the level of risk of the spread of the new Corona virus



This interactive platform allows you to know the level of risk of spreading the kurna virus according to districts, based on the number of cases registered daily and the number of residents in each district. For more information on a daily basis, you can access the following link:

<https://bit.ly/DRM-RiskLevelInMunicipalities>

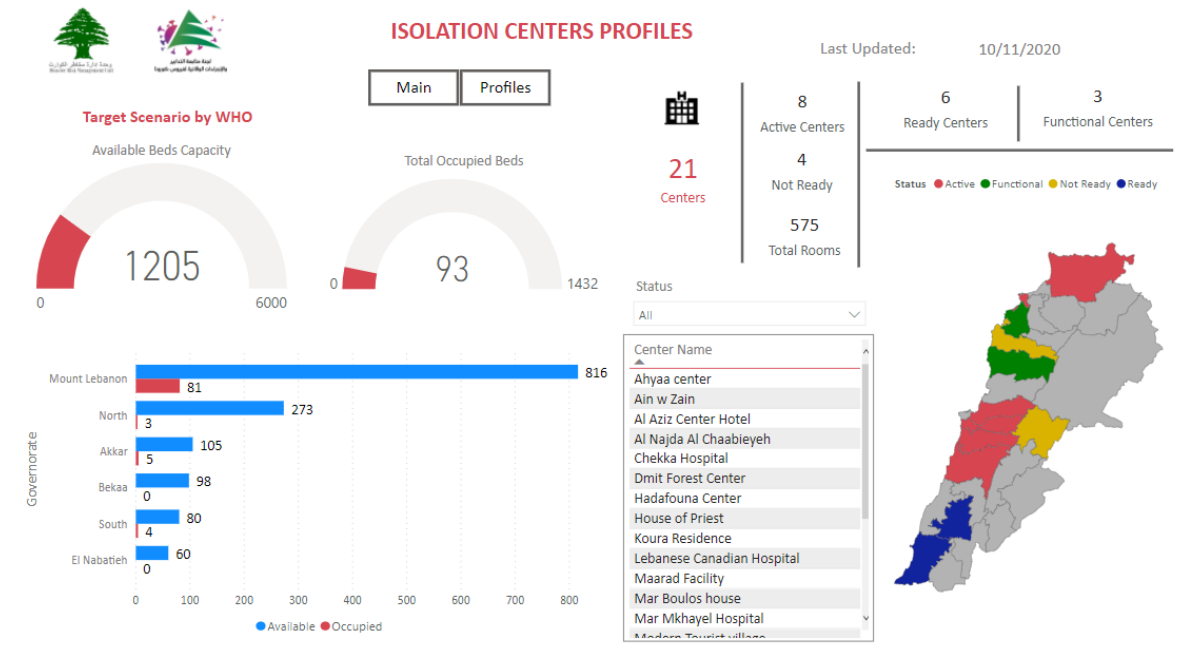
Online platform to track sector commitment in general mobilization procedures



Based on the recommendation issued by the National Committee for Follow-up of Preventive Measures and Measures to Confront the Coronavirus to open all sectors, provided that the general mobilization procedure (safe distance, muzzle, and hand sterilization) be applied, a special electronic platform was created that allows monitoring and measuring the percentage of commitment by various sectors on an ongoing basis.

The detailed results can be viewed directly at the following link <http://bit.ly/covidsectordata>

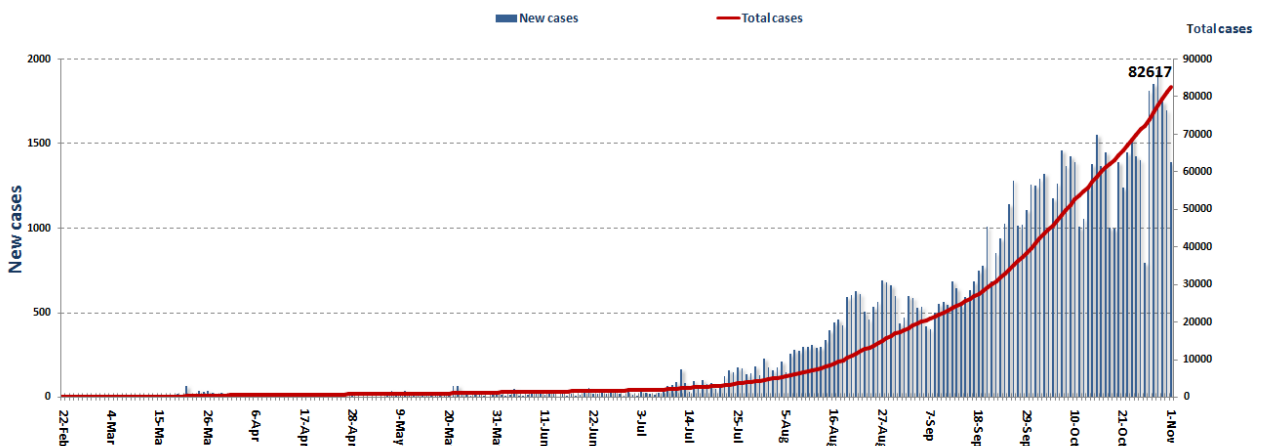
Occupancy rate of isolation centers for cases infected with Coronavirus



For more information about the isolation centers' distribution and the percentage of their occupancy, enter the following link: <http://bit.ly/DRM-IsolationCentersProfiles>

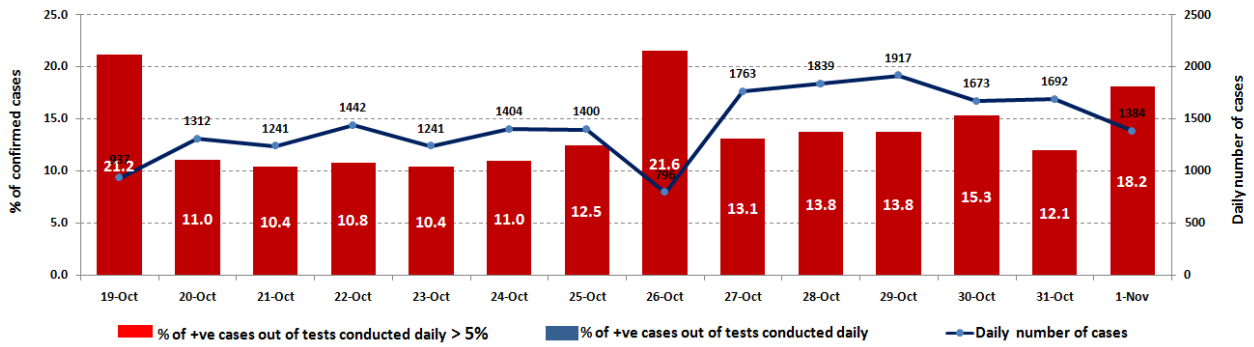
Note: These centers have been equipped in cooperation between the National Committee for Follow-up of Preventive Measures and Measures to Confront the Coronavirus and Governors and Municipalities, the United Nations Development Program, the World Health Organization, UNICEF, the Ministry of Public Health, the Syndicate of Nurses in Lebanon and the Syndicate of Specialists in Social Work.

Cases per day

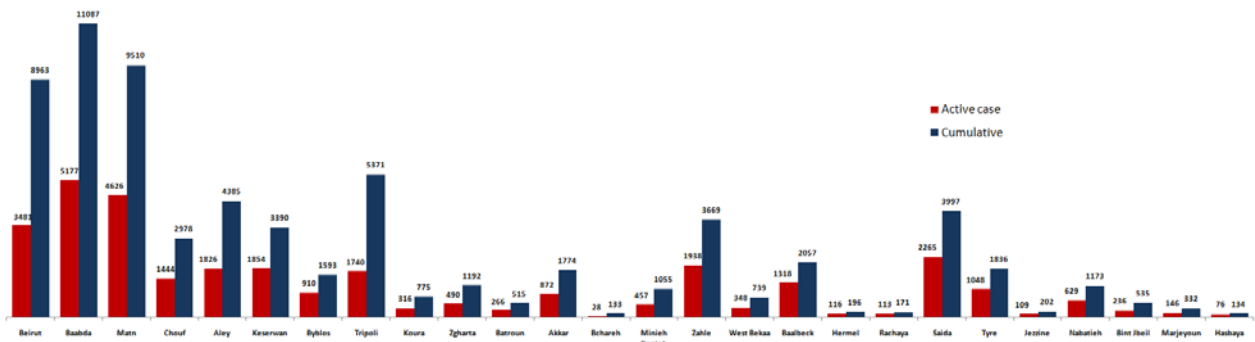


The percentage of positive cases out of the number of daily checks (19 Oct - 01 Nov 2020)

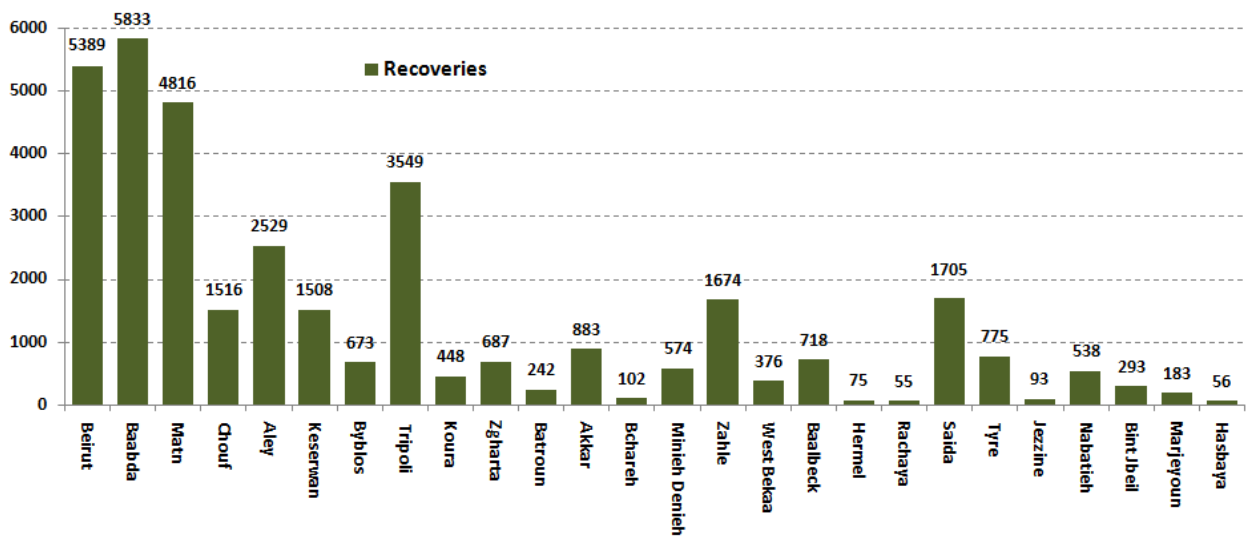
According to the WHO, rates of positivity in testing should remain at 5% or lower for 14 days in a row in order to reopen all sectors



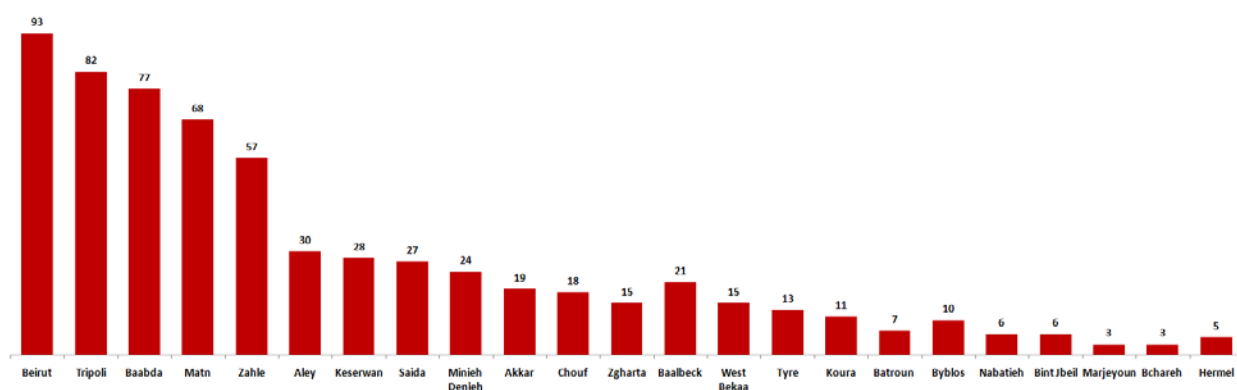
Distribution of Active Cases by Districts



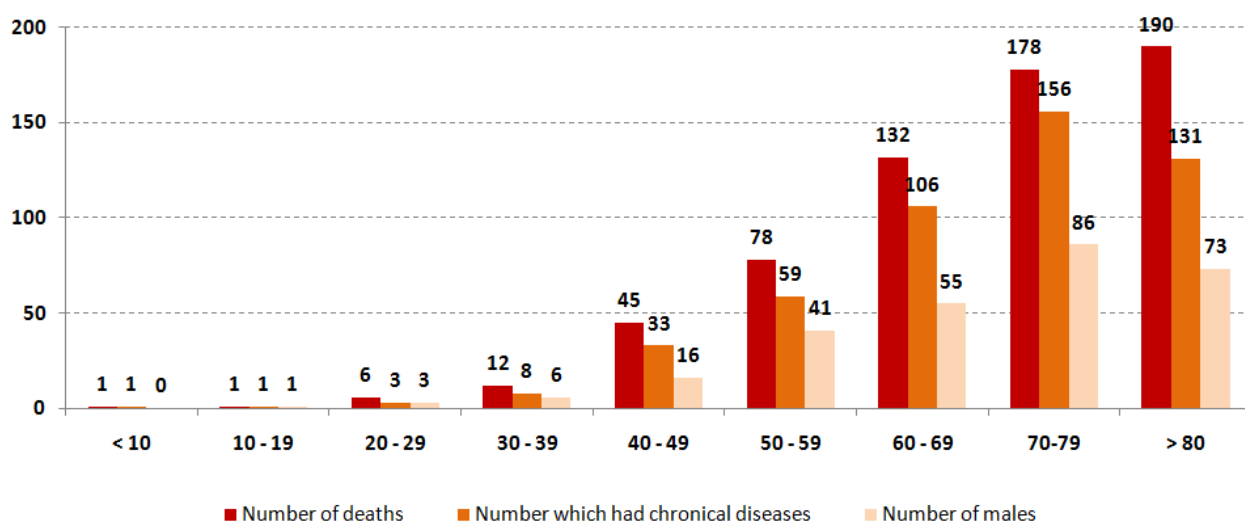
Recoveries



Distribution of deaths by Governorates



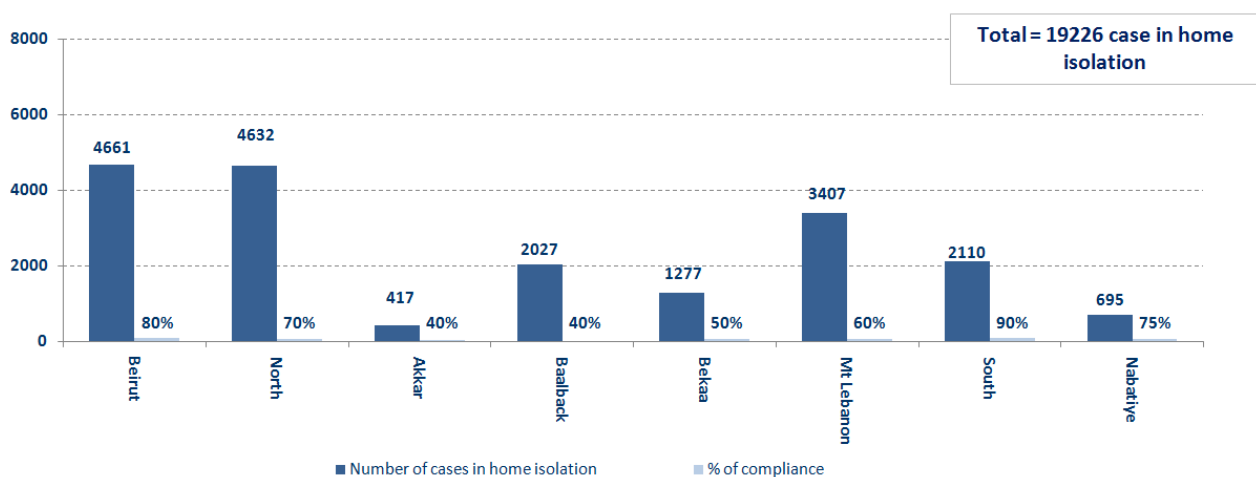
Distribution of deaths by Age



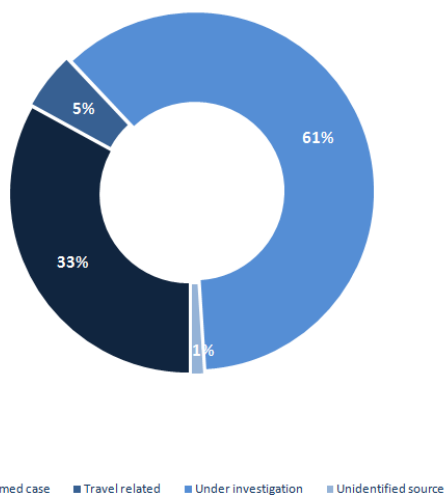
The distribution of the recorded deaths during the past 24 hours

Hospital	Residence	Gender	Age	Chronic
Hamchreih Hospital	Saida	Female	71	Yes
Ftough Kesrwen Hospital	Kesrwen	Male	69	Yes
Saint George – Hadath	Beirut	Female	74	Yes
Notre Dame Des Secours	Jbeil	Male	69	Yes
Nabateih Gov Hospital	Saida	Female	74	Yes
Haykal Hospital	Koura	Female	73	Yes

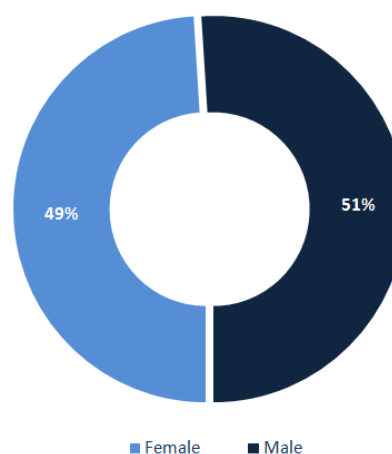
Number of individuals in home isolation and percentage of commitment to isolation



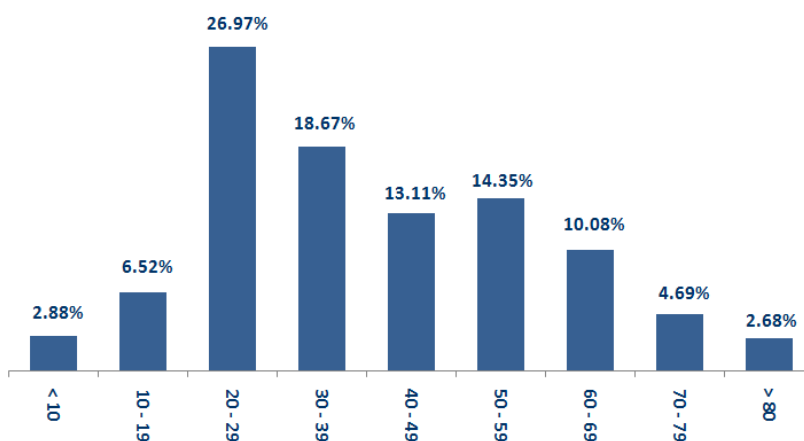
Exposure



Distribution according to gender



Distribution by age



Decisions and actions taken – 11/01/2020

Ministry of Public Health

- The Ministry of Public Health reported on the results of PCR tests for flights that arrived in Beirut and were conducted at the airport on October 28, 2020, and the results showed that there were six (6) positive cases distributed over the following flights:

Arriving from	Company	Flight Number	Number of Positive Cases
10/28/2020			
Istanbul	MEA	266	1
Adana	Pegasus	6700	1
Baghdad	Istanbul	323	1
Istanbul	Istanbul	268	3
Total			6

Lebanese Red Cross

237,429	Number of PCR tests transferred to laboratories	53,578 (78 New)	Number of additional ambulance centers ready to respond	48	ambulance centers	7,374 (60 New)	cases transferred to hospitals
166	Number of volunteers trained to transfer PCR tests	1,498	Number of trained paramedics	8,824 (20 new)	total number of respondents	98,587 (350 New)	number of those benefiting from awareness *sessions
967	The number of university volunteers trained to follow up on prevention measures in companies and institutions	291	Number of university volunteers trained to conduct awareness sessions	550	total LRC volunteers for covid19	8,721	number of trained managers for isolation centers
4,550 (9 New)	Number of beneficiaries from educational electronic platforms COVID-19	261,624	Number of distributed equipment	1,252,049	total distriibuted posters, brochures, and flyers on covid19 prevention	746 (12 New)	number of rpisons that have been disinfected

General Directorate of Internal Security Forces

The number of seizure records during the past 24 hours					The total number of records since 03/08/2020		
Written records of violating institutions (absorptive capacity and preventive measures)					5		
Written records of persons violating the decision to wear a mask					0	Beirut	21,757
Written records of people violating the general mobilization decision (Aragil* and social distancing)					275	Mount Leb	21,919
Total					280	Beqaa	9,151
						North	7,620
Beirut	Mount Leb	Beqaa	North	South		South	8,231
52	177	22	6	23		Total	68,678

General Directorate of State Security

Coronavirus cases were reported in several governorates

- Notification of the percentage of compliance with the general mobilization decision in the governorates, which came as follows within the past 24 hours:

Beirut	South	North	Akkar	Beqaa	Nabateih	Baalbek Hermel	Mount Leb
28%	52%	50%	40%	90%	90%	10%	45%

General Directorate of General Security

-The report of the death of a woman in Beirut due to the Corona virus.

- The report that two members of the security forces in Zahle were infected with the Corona virus

- 5 people from Nahr Al-Bared camp were reported infected with the Coronavirus

- Reporting the commitment of the municipalities to the decision of the Minister of Interior and Municipalities:

Municipalities that abided by the decision	Municipalities didn't abide by the decision
Hasbaya, Al-Fardis, Ain Kafr Zabad, Qaa Al-Reem, Jdita, Rahba, Niha, Jahiliya, Amatour, Homal, Ain Anoub	Kfar Zbeid, Ain Kfar Zbeid, Aandqeit

- Follow up the implementation of the required security and preventive measures at the airport, ports and border crossings.
- Reporting cases registered in the various districts and cases in home quarantine.

Ministry of Public Works and Transportation

Departing Flights		Arriving Flights	
Number of Flights	44	Number of Flights	45
Number of Departing Individuals	4,783	Number of Arrivals	3,845

Port	Entered			Left		
	Import	Direction	#	Export	Direction	#
Beirut	Containers	Valencia	1			
	Containers	Limassoul	1			
	Diesel	Zahrani	1			
Zahrani				Diesel	Beirut	1
Total			3			1

General announcements

Based on the recommendations of the Committee for the Follow-up of Preventive Measures and Procedures for Coronavirus No. 710 / AJAD on 10/30/2020, the Ministry of Interior and Municipalities issued Resolution No. 1358 on 11/1/2020 regarding the continued closure of some villages and towns due to the high number of infections. Corona virus in it. The decision stated the following:

- Determining the times of exit and entry to the streets and roads in all Lebanese regions covered and not covered by the closure decision
 - The continued closure of bars, cabarets, and nightclubs, and the banning of public and private parties, social events and gatherings on the entire Lebanese territory, and permission for restaurants and cafes, provided that they do not exceed 50% of the absorption rate and adhere to health conditions (safe distance, not overcrowding)
 - When necessary, citizens are obliged to wear a mask to cover the nose and mouth when traveling and to adhere to health conditions (safe distance, not overcrowding)
 - It is exclusively for the Minister of Education and Higher Education to take the decision to open or close educational institutions and administrative units
 - Determining the number of people traveling in public and private means of transport with the obligation to wear masks for the driver and passengers
- Other measures:
- Full closure of the towns mentioned in the decision starting from 5:00 a.m. on Monday 11/2/2020 until 5:00 a.m. on Monday 9/11/2020
 - To suspend work in all official and private institutions located within the scope of these villages and towns, with the exception of institutions and departments of the Ministry of Education and Higher Education, according to what the Minister deems appropriate.
 - Coordination with the religious authorities in terms of closing places of worship and canceling religious events
- Excluding some sectors and employees from the decision, with the necessity to keep the job card in order to present it when necessary
- Assigning governors to:
- Determine the municipal zone in the received towns Take the necessary measures to implement this decision and request the support of the General Directorate of Internal Security, when necessary
 - Emphasize on citizens the need to adhere to public safety procedures and to adhere to wearing a mask when traveling in case of necessity
 - Assigning the district attorneys to instruct the mayors to review the lists of positive cases on the IMPACT platform daily and coordinate with the judiciary doctor and the Lebanese Red Cross to take the appropriate decision
- Assigning the General Directorate of Internal Security Forces to strictly enforce this decision and suppress violations of public mobilization decisions, and to organize arrest records against violators.

Note: The decisions can be found at www.drm.pcm.gov.lb

Examples of lack of adherence to safety measures

Failure of some municipalities to abide by the Ministry of Interior and Municipalities Decision No. 1025/2020 related to the closure of towns that have a high risk of the spread of the epidemic.

- Demand gatherings and demonstrations.
- Failure to comply with the preventive measures and procedures required in several stores and markets (putting on a muzzle or face mask, sterilizing hands, maintaining a safe distance).
- Non-compliance with the 50% occupancy rate in several restaurants and amusement game centers.
- Gatherings for social events.
- Failure of those in contact with confirmed cases to adhere to home isolation procedures until the results of the laboratory tests are issued.

If you feel any symptoms, call directly the hotline of the Ministry of Public Health: 1214 or 01/594459

Laboratories that did not comply with the procedures approved by the MoPH About the information required to be recorded for infected cases within the past 24 hours

Laboratories that did not specify the Governorate	
Laboratory/Hospitals	Cases
Laboratoire Inovie / Fayyadieh	259
Hadi Laboratory/ Haret Hreik	100
Rafic Hariri University hospital	8
Hospital Sacre Coeur	1
Hospital Baalbeck Gouvernemental	1
Hospital American university	1
Hospital Ain wa Zain	1
Mashrek Medical Diagnostic Center MDC	1

Number of positive cases without specifying the place of residence	
Laboratory/Hospitals	Cases
Laboratoire Inovie / Fayyadieh	259
Hadi Laboratory/ Haret Hreik	102
Mashrek Medical Diagnostic Center MDC	21
Rafic Hariri University hospital	8
Hospital Hammoud / Saida	3
Hospital Rassoul Aazam	1
Hospital Sacre Coeur	1
Hospital Baalbeck Gouvernemental	1
Hospital American university	1
Hospital Ain wa Zain	1
Hospital Ragheb Harb	1
Hospital Centre Hospitalier du Nord	1

Number of positive cases without a phone number	
Laboratory/Hospitals	Cases
Hadi Laboratory/ Haret Hreik	5

A list of the laboratories accredited by the MoPH to conduct PCR tests

المختبرات الحكومية المؤهلة إجراء التشخيص المخبري لفيروس كورونا بطريقة الـ RT-PCR

المختبر	الموقع
مستشفى رفيق الحريري الجامعي RHUH	بيروت
مستشفى حلبا الحكومي	حلبا
مستشفى طرابلس الحكومي	طرابلس
مستشفى البترون الحكومي	البترون
مستشفى قنوح كسروان الحكومي (البوار)	كسروان
مستشفى نبيه يزّي الحكومي الجامعي	النبطية
مستشفى تينين الحكومي	تينين
مستشفى بنت جبيل الحكومي	بنت جبيل
مستشفى بعلبك الحكومي	بعلبك
مستشفى الرئيس الياقوب الهراوي الحكومي	زحلة

مختبرات المستشفيات العسكرية

Hôpital Militaire Central	المستشفى العسكري المركزي في بيروت	بيروت
---------------------------	-----------------------------------	-------

المختبرات المؤهلة لأخذ عينات "المسحات الأنفية" بطريقة Drive- thru

مختبر ميديكال دياغنوستيك تريتمانت سنتر (الحمراء)	بيروت
Medical Diagnostic Treatment Center (MDTC)	بيروت
مختبر ميد لاب MedLab SAL CIC ALS (الحمراء - الجبلين)	بيروت
مختبرات عياني Itani Medical Laboratories (المرعة)	بيروت
مختبر أ ب سي ABC Laboratories	الأشرفية
مختبرات معوض الطبية Mouawad Medical Laboratory	النياح
مختبرات الشياح (د. فواد ربحان) Rihan Medical Center	النياح
مختبر إكسبرت لاب Expert Lab	المنصورة
مختبر لايف لاب Life LAB	بعلبك
مستشفى الرياق Riyak Hospital	رياق

المختبرات الخاصة المؤهلة لإجراء التشخيص المخبري لفيروس كورونا بطريقة الـ RT-PCR

المختبر	الموقع
AUBMC مستشفى الجامعة الأميركية	بيروت
Hotel-Dieu de France (HDF) مستشفى أوتيل ديو الجامعي	بيروت
مختبرات رودولف ميريو (الجامعة اليسوعية – المتحف) Laboratoire Rodolphe Mérieux (Université Saint-Joseph)	بيروت
Saint-George Hospital - UMC مستشفى القديس جارجيوس الجامعي	بيروت
Makassed General Hospital مستشفى المقاصد	بيروت
LAU Medical Center - Rizk Hospital مستشفى رزق الجامعي	بيروت
Hôpital Libanais Geitawi - CHU مستشفى اللبناني الجعيتاوي الجامعي	بيروت
Hôpital Notre-Dame du Rosaire مستشفى الوردية	بيروت
Doctor 's Center مختبر مركز الأطباء	بيروت
Fontana Laboratories مختبر فونتانا (الحمرا)	بيروت
مختبر الأمن العام (العناتية)	بيروت
Laboratoire Jabre-Ghorra مختبرات جبر وغرة	بيروت
Saint Marc Medical & Diagnostic Center مختبر السان مارك	بيروت
Laboratoire Moderne (Modern Lab- Berjaoui) المختبرات الحديثة	الغبيوي
Sahel General Hospital (SGH) مستشفى الساحل	الغبيوي
مستشفى الزهراء الجامعي	الغبيوي
Al Zahraa Hospital - UMC مستشفى الرسول الأعظم	برج الراجحة
مستشفى بهمن	
Al Rassoul Al Aazam Hospital Bahman Hospital	حارة حريك
مختبر ناتيونال دياغنوستك سرفيس كومباني	
National Diagnostic Services Company (NDSC)	حارة حريك
Medical Diagnostic Center مختبر الدكتور محمود عثمان - مركز التحاليل الطبية	للمرجة
American Diagnostic Center (ADC) مختبر أميريك دياغنوستك سنتر	الجناب
Mount Lebanon Hospital مستشفى جبل لبنان	بعنا
Hôpital Saint-George – Hadath مستشفى السان جورج الحدث	بعنا
Al Hadi Laboratory مختبر الهادي	بعنا
INOIE-Liban مختبر	بعنا

Hôpital du Sacré- Coeur مستشفى قلب يسوع	الحازمية
Clinigene مختبر كلينيجان	الحازمية
Hôpital Dr.Samir Serhal مستشفى سرحال	المتن
Transmedical for Life مختبر ترانس ميدكال فور ليف	المتن
Haroun Hospital مستشفى هارون	الزلفا
Bellevue Medical Center (BMC) مستشفى بلفو	المنصورة
Hôpital Albert Haykal مستشفى هيكال	الكورة
Centre Hospitalier du Nord (CHN) مركز الشمال الإشتغاني	زغرتا
Mazloum Hospital مستشفى المظلوم	طرابلس
Al Mounla Hospital مستشفى الملا	طرابلس
Nini Hospital مستشفى النيني	طرابلس
مختبر ميكروبيولوجيا الصحة والبيئة LMSE - المعهد العالي للدكتوراه، الجامعة اللبنانية	طرابلس
CHU - Notre-Dame des Secours مستشفى سيدة المعونات الجامعي	جبل
Lab Akiki & Boulos مختبر عقيقي وبولس	جبل
Centre Médical Wakim مختبر واكيم	جونية
Ain Wazein Hospital مستشفى عين وزين	الشوف
Hammoud Hospital UMC مستشفى حمود الجامعي	سيدا
Al Karim Medical Laboratory (KML) مختبر الكريم	سيدا
Sheikh Ragheb Harb Hospital مستشفى الشيخ راجب حرب	البيمنة
Sabbah Diagnostic Center (SDC) مختبر الصباح	البيطية
Jabal Amel Hospital مستشفى جبل عامل	صور
Mashrek Diagnostic Center (MDC) مختبر المشرق	صور
Dar Al Amal University Hospital مستشفى دار الأمل الجامعي	بعلبك
Khoury General Hospital مستشفى خوري	زحلة
Medical Care Center (MCC) مختبر ميدكال كير سنتر	زحلة