



Lebanon National Operations Room
Daily Report on COVID-19

Wednesday.07 April.2021

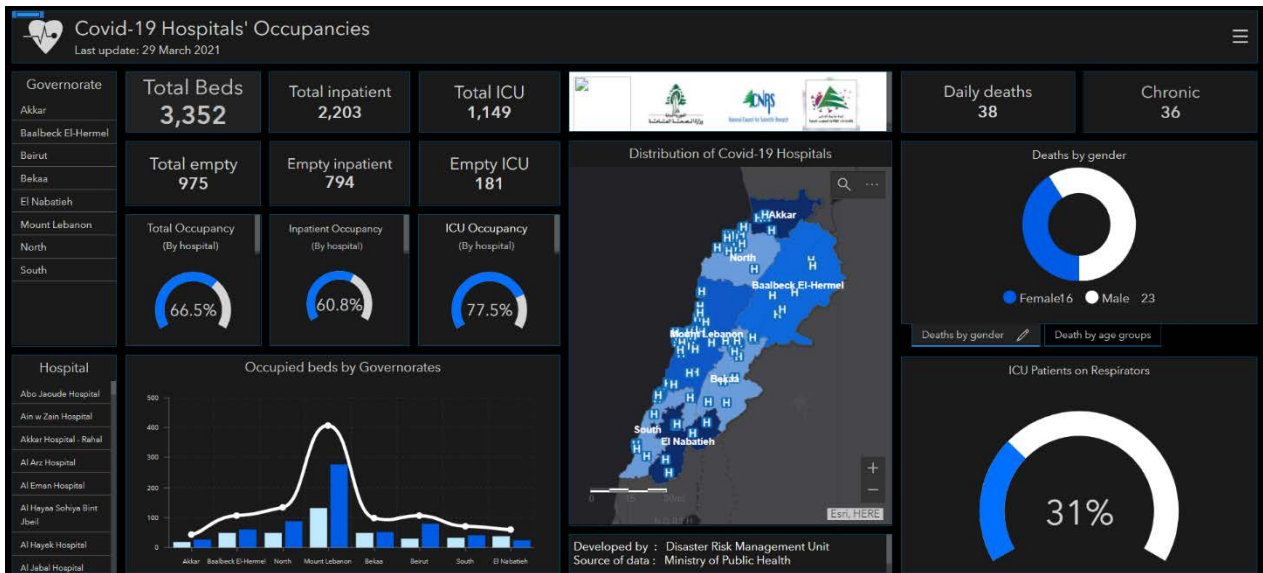
Report #382

Time Published: 7:30 PM

3,120 New Cases		485,918 Total Cases since 21.2.2020		6,512 Total Deaths		391,359 Total Recovered	
3,101 Residents	19 Expats	481,097 Residents	4,821 Expats	33 New Deaths		2,250 New Recovered	
296 Deleted Status due to its recurrence		2,664 Total Cases in the Health Sector		88,047 Total Active Cases		1,987 Hospitalized Cases	
16.1% The percentage of positive examinations /100 examinations during the past 14 days		2 Cases in the Health Sector		86,060 Cases in Home Isolation		258 Ventilated Cases	0 New Cases in ICU
875 Total cases in ICU		1,112 Mild cases					
Vaccination		3,646,665 COVID-19 Tests since 21.2.2020		Lebanon Status compared to the World			
170,916 Cumulative	95,698 Cumulative	2,736 COVID-19 Tests at Airport within 24 hrs.	20,976 COVID-19 tests for residents within 24 hrs.	Total Cumulative	485,918	133,270,099	
7,224 Daily Dose	3,666 Daily Dose			Total Deaths	6,512	2,890,972	
				Deaths percentage	1,34%	2.16%	
				Total recoveries	391,359	107,472,343	

Ref: Ministry of Public Health Data

Occupancy rate of COVID-19 Beds and Availability



For daily information on all the details of the bed's distribution availability for Covid-19 patients among all governorates and according to hospitals, kindly check the dashboard link:

Computer: <https://bit.ly/DRM-HospitalsOccupancy-PCPhone>: <https://bit.ly/DRM-HospitalsOccupancy-Mobile>

Distribution by Villages

Beirut	241	Baabda	472	Maten	333	Chouf	123	Kesrwen	165	Akkar	49
Ain Mraisseh	1	Chiyah	43	Borj Hammoud	9	Damour	2	Jounieh Sarba	5	Halba	7
Ras Beyrouth	4	Jnah	13	Nabaa	1	Saadiyat	5	Jounieh Kaslik	2	Cekh Mohamad	1
Manara	1	Ouzaa	14	Sinn Fil	21	Naameh	4	Zouk Mkayel	23	Minyara	4
Qreitem	2	Bir Hassan	15	Jdaidet Matn	9	Haret En Naameh	2	Haret El Mir	6	Aarqa	1
Raoucheh	5	Ghbayreh	24	Baouchriyeh	6	Mechref	1	Jounieh Ghadir	7	Deir Dalloum	1
Hamra	23	Ain Roummaneh	9	Daoura	14	Chhim	7	Zouk Mosbeh	6	Mazraat Baldeh	1
Ain Tineh	1	Furn Chebbak	2	Raoda Baouchriyeh	8	Mazboud	1	Adonis	5	Jebrayel	1
Msaitbeh	14	Tahouit Nahr	1	Sadd Baouchriyeh	3	Daraiya	4	Haret Sakhr	4	Aakkar El Aatiqa	6
Ouata Msaitbeh	3	Haret Hreik	70	Sabtiyeh	10	Ketermaya	3	Sahel Aalma	6	Koucha	1
Mar Elias	5	Laylakeh	17	Deir Mar Roukoz	1	Aanout	4	Kfar Yassine	1	Hayssa	1
Unesco	1	Borj Brajneh	59	Dekouaneh	40	Bourjein	1	Tabarja	5	Bebnine	1
Tallet Khayat	3	Mreijeh	38	Antelias	10	Barja	10	Adma Oua Dafneh	13	Beit Younes	1
Dar Fatwa	3	Tahouitat Ghadir	8	Jall Dib	10	Baassir	2	Safra	8	Qabaait	1
Tallet Drouz	2	Baabda	10	Naqqach	9	Dibbiyeh	1	Bouar	12	Habchit	1
Sanayeh	1	Hazmiyeh	13	Zalqa	9	Jiyeh	6	Aaqaybeh	6	Hmaireh	1
Zarif	7	Fayadiyeh	4	Byaqout	7	Jadra	1	Aajaltoun	1	Michmich	1
Mazraa	12	Rihaniyeh	1	Dbayeh	9	Ouadi Ez Zayni	3	Ballouneh	3	Fnaydeq	1
Borj Abou Haidar	14	Yarzeh	2	Deir Aaoukar	5	Aalmane	4	Shayleh	6	Majdala	1
Basta Faouqa	7	Hadath	68	Mansouriyeh	15	Ouardaniyeh	3	Daraiya	1	Tleil	1
Tariq Jdideh	28	Jamhur Louaizeh	2	Daychouniyeh	3	Joun	2	Ain Er Rihaneh	1	Aaidamoun	1
Horch	1	Kfar Chima	4	Fanar	12	Deir El Qamar	1	Jaaita	7	Qbaiyat	1
Ras Nabaa	9	Chahrou Soufla	3	Ain Saadeh	3	Choualiq	1	Ghazir	2	Ouadi Khaled	5
Bachoura	1	Bsaba	3	Ain Najm	3	Semqaniyeh	1	Kfar Hbab	3	Akroum	1
Basta Tahta	8	Baalchmay	1	Roumieh	2	Bchetfine	1	Borj El Ftouh	1	Others	8
Gemmaizeh	1	Aabadiyeh Jdideh	1	Bqennaya	3	Deir Baba	1	El Ftouh	1	Bcharrieh	13
Hopital Orthodoxe	1	Qrayeh	2	Bsalim	15	Kfar Him	4	Chnanaair	1	Bcharreh	10
Geitawi	1	Ras Matn	1	Nabay	1	Dmit	1	Ghosta	3	Aabbine	1
Mar Mikhayel Nahr	2	Qobbayaa	1	Mtayleb	2	Faouarat Jaafar	1	Batha	1	Hasroun	1
Achrafiyeh	41	Qsaibeh	3	Rabiyeh	4	Mghayreh	2	Kfour	2	Bazaoun	1
Aadlyeh	1	Salima	2	Qornet Chehouane	3	Ouarhaniyeh	1	Chahtoul	1	Minch Dunieh	33
Others	38	Rouayssat Salima	1	Elissar	1	Baaqline	4	Jouret Et Termos	1	Minieh	7
Zahleh	175	Hasbaiya Matn	1	Raboueh	5	Ainbal	4	Maaysra	2	Sir Ed Danniye	3
El Midane	1	Chbaniyeh	4	Beit Ech Chaar	7	Gharifeh	1	Ghbaleh	1	Qattine	1
Haouch Ez Zaraanah	2	Khreibeh	2	Dik Mehdi	1	Jahliyeh	1	Rayfoun	1	Haql El Aazimeh	1
Er Rassiyeh	5	Falougha	1	Ain Aar	1	Hasrout	2	Aachqout	3	Beit El Faqs	1
El Berbara	1	Others	29	Mazraat Yachouaa	4	Botmeh	10	Mreijeh	2	Aazqai	1
El Maallaqa	7	Tripoli	73	Zakrit	6	Ain Qani	3	Kfar Dibiane	2	Kfar Chellane	1
Karak Nouh	10	Ez Zeitoun	7	Bikfaya	3	Beqaata	2	Bqaatouta	1	Kfar Habou	1
Saydet En Najat	3	Bab Er Raml	2	Boutros Karm Tine	1	Niha	1	Mayrouba	1	Kaff El Malloul	1
Haouch El Oumara	4	Et Tall	1	Ain Kharroubeh	1	Khreibeh	2	Hrajel	5	Markebta	3
Zahleh Aradi	3	El Qoubbeh	7	Himlaya	2	Aammattour	1	Jbeil	120	Bakhaaoun	11
Fourzol	6	Ez Zahriyeh	3	Broummana	7	Kahlouniyeh	2	Jbayl	27	Others	2
Nabi Ayla	1	Trablous Jardins	4	Jouret El Ballout	2	Batloun	1	Mastita	4	Beqaa Gharby	93
Hazerta	1	Mina N:1	10	Aayoun	1	Maasser Ech Chouf	1	Qartaboun	1	Machghara	9
Ablah	2	Qalamoun	1	Qenabet Bromana	1	Jbaa	1	Blat	5	Ain Et Tineh	2
Qaa Er Rim	3	Beddaoui	3	Baabdat	5	Bater	3	Aamchit	17	Saghibe	2
Ksara	8	Camp Beddaoui	2	Beit Meri	2	Others	4	Kfar Sala	1	Khirket Qanafar	3
Ouadi El Arayech	1	Others	33	Monteverdi	4	Aleyh	220	Halate	10	Kefraiya	3
Chtaura	7	Koura	42	Mtain	2	El Aamroussiye	26	Jedayel	2	Aana	3
Makseh	2	Amioun	1	Ain Es Sofsaf	3	Hay Es Sellom	31	Nahr Ibrahim	5	Mansoura	1
Taalabaya	11	Kfar Aaqqa	4	Qaaqour	6	El Qoubbeh	3	Mounsef	1	Joubb Jannine	8
Jdita	6	Dar Chmizzine	1	Khinchara	1	Khaldeh	11	Ehmej	3	Lala	6
Saadnayel	12	Kousba	4	Aintoura	1	El Oumara	33	Aannaya	3	Kamed El Laouz	2
Qabb Elias	9	Aaba	1	Bteghrine	3	Deir Qoubel	5	Jrabta	3	Baaloul	1
Mrayjat	2	Majdel	1	Douar	1	Aaramoun	35	Hsoun	3	Ghazeh	7
Bouarej	4	Btaaboura	1	Zighrine	1	Baouerta	4	Adonis	7	Yaaqoub Et Tahta	3
Barr Elias	17	Btouratij	1	Mar Moussa Douar	1	Bchamoun	27	Bchilleh	1	Khiaara	2
Youghoun Oulouk	1	Kefraiya	2	Zabbougha	2	Ain Aanoub	6	Aabaydat	1	Qaraaoun	8
Majdel Aanjar	1	Enfeh	2	Baskinta	6	Blaybel	1	Mayfouq	1	Manara	5
Masnaa	4	Ras Masqa	3	Sannine	1	Aaley	3	Fatreh	2	El Harimeh	1
Riyag	16	Bohsas	1	Others	4	Kahhaleh	5	Chamate	1	Sohmor	9
Aali En Nahri	5	Dahr El Ain	1	Marjaayoun	72	Ain Er Roummaneh	3	Hboub	3	Libbaya	1
Qoussaya	1	Barsa	9	Jdaideh	2	Ghaboun	2	Ghorfine	1	Marj	12
Raait	2	Bkeftine	3	Ibl Es Saqi	1	Aayat	1	Chikhane	1	Yohmor	2
Haret El Fikani	2	Nakhle	1	Borj El Mlouk	1	Souq El Gharb	1	Bekhaaz	1	Qelaya	1
Terbol	5	Others	6	Khiyam	8	Baysour	3	Qartaba	3	Raouda	1
Massa	1	Batroun	18	Mazraat Sarada	1	Rimhala	1	Aaboud	1	Others	1
Kfar Zabad	3	Batroun	3	Aadaysseh	3	Binnay	1	Rouaiss	1	Rachaiya	19
Faour	1	Chikka	9	Kfar Kila	3	Kfar Matta	1	Jaj	1	El Midane	2
Others	5	Chibtine	1	Deir Siriane	1	Saoufar	1	Tartij	1	Aaqbet Rachaiya	1
Zgharta	17	Ras Nahhach	3	Taybeh	5	Bedghane	2	Others	9	Bakkifa	1
Zgharta	5	Others	2	Houla	4	Mansoret Bhamdon	1	Hermel	10	Dahr El Ahmar	4
Rachaaïne	2			Markaba	1	Ighmid	1	Hermel	9	Tannoura	1
Ardeh	1			Meiss Ej Jabal	5	Mrayjat	2	Charbine Hermel	1	Kfar Qouq	2
MEjdlaiya	5			Aadchit	2	Others	7			Kfar Denis	2
Haret El Faouar	1			Qabrikha	3					Khirket Rouha	1
Aalma	2			Qantara	1					El Qinnaabeh	1
Bsebaal	1			Majdel Selim	16					Bireh	2
				Souaneh	10					Deir El Aachayer	1
				Toulina	5					Aayta El Foukhar	1

Ref : Ministry of Public Health

All reports and related decisions can be found at: <http://drm.pcm.gov.lb>

Or social media @DRM_Lebanon

Baalbek	177	Saida	120	Tyre	179	Nabatieh	153	Bnt Jbeil	152	Others	43
Baalbek	39	Saida El Ouastani	2	Sour	35	Nabatieh Et Tahta	15	Bent Jbayl	6		
Douris	23	Saida El Qadimeh	19	Sour El Bass	3	El Faouqa	3	Aaynata	4		
laat	2	Bramiyeh	1	Bahr Ech Chemali	3	Mazraat Kfar Jaouz	5	Maroun Er Ras	2		
Nahleh	5	Hlaliyeh	3	Sour Er Rachidiyeh	1	Zibdine	1	Ain Ebel	5		
Kfar Dane	1	Qiyaa	1	Sour Maachouq	3	Kfar Roummame	6	Rmaych	12		
Hadath	2	Haret Saida	3	Borj Ech Chemali	9	Choukine	2	Aayta Ech Chaab	4		
Ras Baalbek Sahel	2	Ain El Heloueh	7	Deir Qanoun El Ain	3	Habbouch	6	Ramiyeh	1		
Jdaidet El Fekeheh	1	Majdelyoun	4	Smaiyeh	1	Kfar Tibnit	3	Tibnine	26		
Nabi Osmane	2	Aabra	7	Jouaiya	5	Kfour	3	Soultaniyeh	1		
Aarsal	1	Qraiye	1	Debaal	3	Jbaa	1	Safad El Battikh	5		
Laboueh	4	Bqosta	2	Mjadel	3	Kfar Fila	1	Jmajmeh	5		
Zabboud	1	Boustane Cheikh	1	El Mechref	1	Ain Qana	3	Aayta Ej Jabal	1		
Harbata	1	Ain Ed Delb	2	Aaytit	6	Jarjouaa	1	Baraachit	10		
Nabha El Mehara	1	Ghazyeh	6	Bafly	6	Houmine El Faouqa	1	Chagra	5		
Chaat	1	Maghdoucheh	4	Deir Aames	1	Aarab Salim	5	Haddatha	1		
Younine	2	Qennarit	3	Barich	2	Roumine	3	Khirbet Selm	4		
Deir El Ahmar	21	Kharayeb	3	Qana	2	Houmine Et Tahta	1	Hariss	12		
Barqa	1	Kaouthariyet Riz	1	Maarakeh	7	Zefta	1	Kfar Dounine	4		
Bednayel	2	Zrariyeh	4	Maaroub	6	Deir Ez Zahrani	5	Kounine	1		
Qsarnaba	2	Aadloun	2	Recheknanay	1	Charqiyeh	4	Tiri	1		
Temnine El Faouqa	2	Insariyeh	2	Jennata	1	Toul	8	Kafra	4		
Beit Chama	1	Loubieh	1	Ain Baal	6	Nmairiyeh	3	Qalaouiye	1		
Haouch Er Rafqa	2	Babliyeh	2	Bazouriyeh	5	Harouf	5	Srobbine	1		
Temnine Et Tahta	6	Ghassaniyeh	1	Hanaouay	1	Douair	6	Rachaf	2		
Chmistar	4	Sarafand	7	Tayr Kifa	3	Jibchit	16	Yater	8		
Taraya	8	Bissariyeh	2	Tayr Debba	3	Mayfadoun	4	Debl	4		
Hizzine	2	El Aaqbiyeh	1	Chehabiye	9	Aadchit Ech Chqif	1	Beit Lif	6		
Nabi Chit	8	Es Siyad	7	Toura	2	Aabba	3	Others	16		
Brital	20	Teffahta	3	Deir Qanoun Nahr	2	Insar	4				
Beit Mchaik	1	Saksakiyeh	4	Chehour	1	El Gharbiyeh	1				
Bouday	3	Merouaniyeh	3	Srifa	3	Ech Charqiyeh	2				
Ham	1	Aangoun	2	Halloussiyeh	1	Qsaibeh	3				
Chlifa	2	Kfar Hatta	2	Tayr Falsay	2	Arnoun	1				
Others	3	Kfar Melki	1	Aabbassiyeh	6	Qaaqaiyet Ej Jisr	3				
		Others	6	Chabriha	4	Kfar Sir	4				
				Malkiyet Es Sahel	1	Yohmor	5				
				Jbal El Botm	4	Sir El Gharbiyeh	1				
				Borj Rahhal	2	Others	13				
				Zebqine	4						
				Qlaileh	3						
				Tayr Harfa	1						
				Mansouri	1						
				Majdel Zoun	4						
				Naqoura	1						
				Others	8						

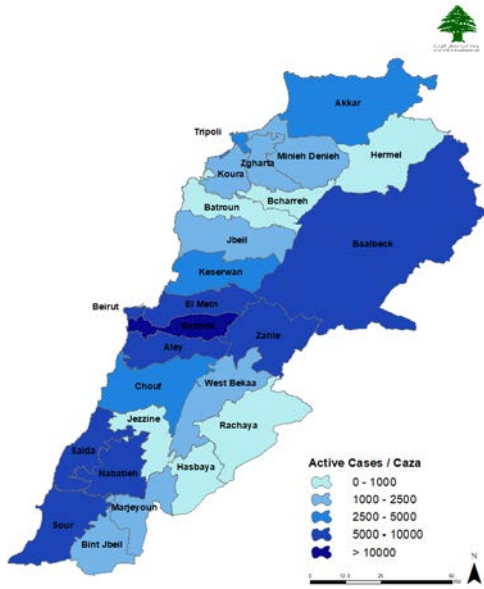
Ref : Ministry of Public Health

All reports and related decisions can be found at: <http://drm.pcm.gov.lb>

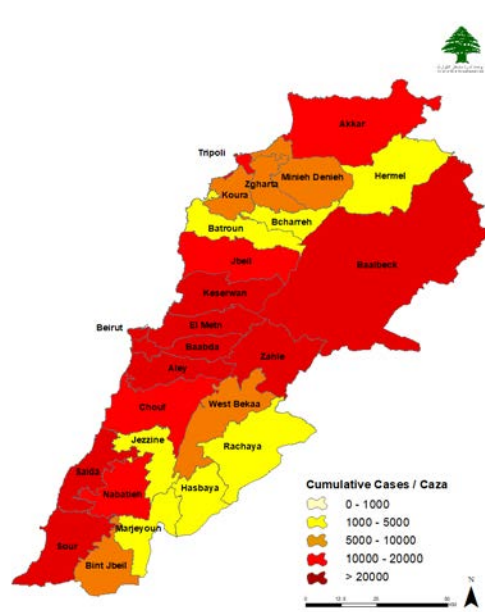
Or social media @DRM_Lebanon

Distribution of Active and Cumulative Cases

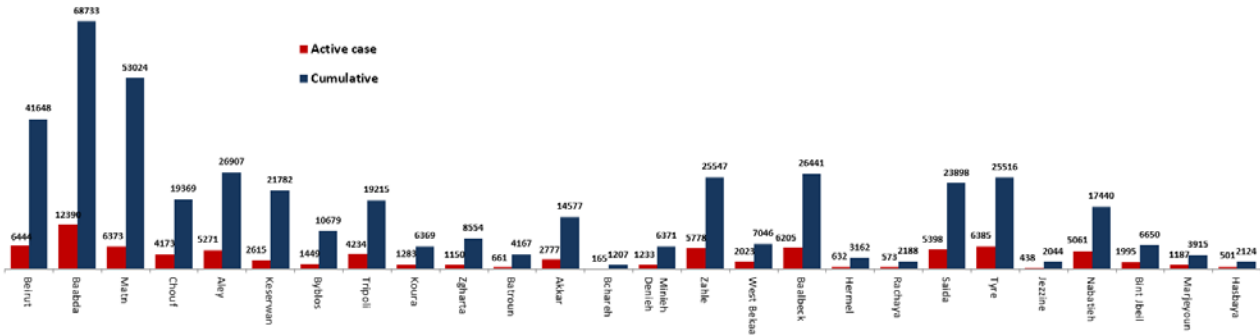
Distribution of Active Cases



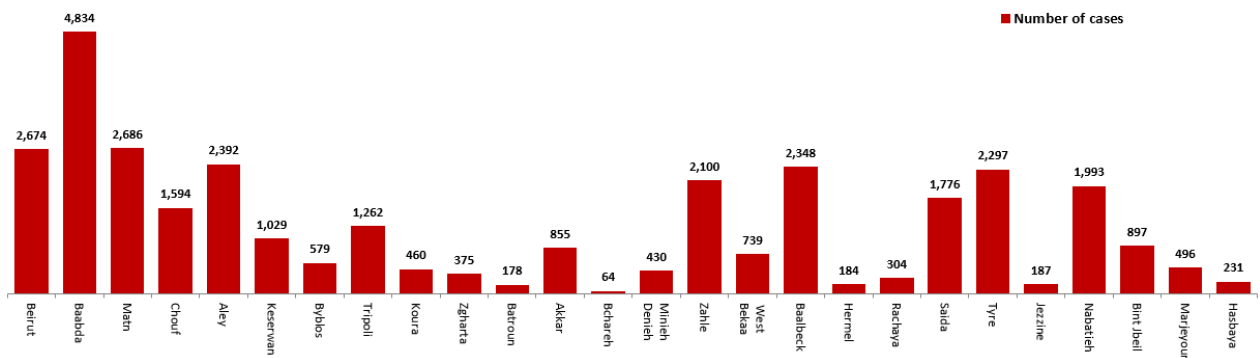
Distribution of Cumulative Cases



Number of Cases by Location



Number of cumulative cases for the last 14 days



Ref : Ministry of Public Health

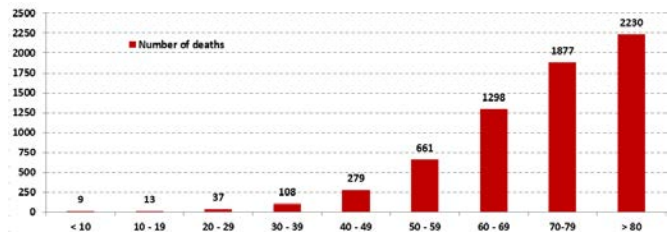
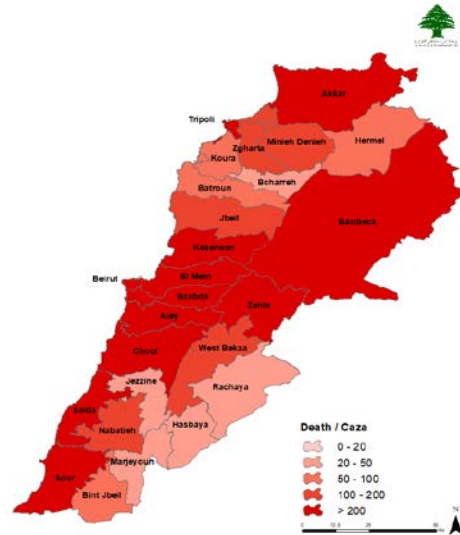
All reports and related decisions can be found at: <http://drm.pcm.gov.lb>

Or social media @DRM_Lebanon

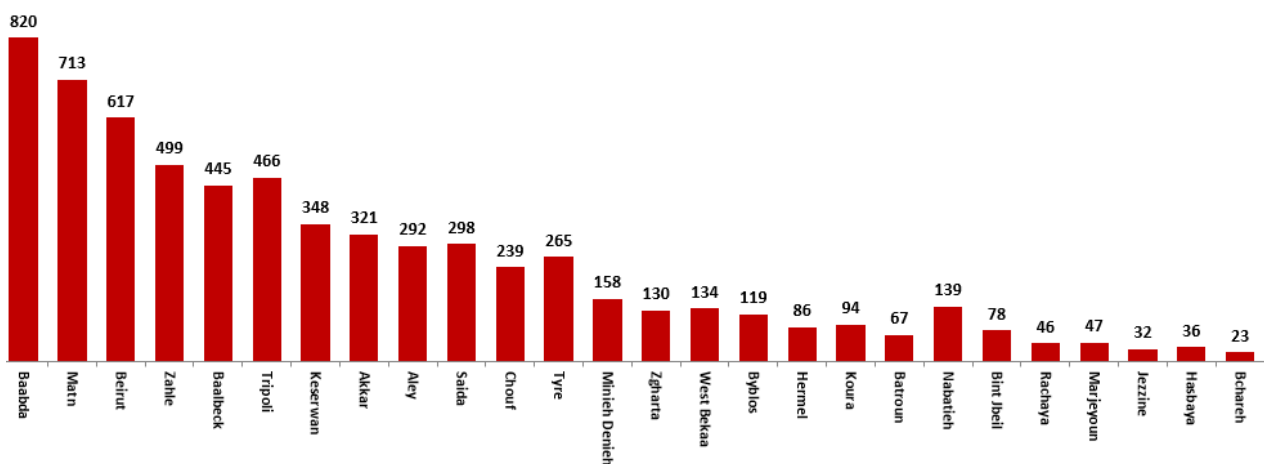
Distribution of Death Cases

Distribution of deaths during the past 24 hours

Hospital	Residence	Gender	Age	Chronic
Mount Lebanon Hosp	Baabda	Male	22	Yes
Bahman Hosp	Beirut	Male	62	Yes
Baabda Hosp	Baabda	Male	65	Yes
Makkassed Hosp	Beirut	Male	66	No
Saint George Ajiltun	Kesrwen	Female	66	Yes
Saint George Hadath	Baabda	Male	66	Yes
Mount Lebanon Hosp	Aleyh	Male	68	Yes
Baabda Hosp	Baabda	Male	68	Yes
Mount Lebanon Hosp	Baabda	Male	68	Yes
Sahel Hosp	Baabda	Male	68	Yes
Al Raei Hosp	Saida	Male	68	Yes
Beqaa Gov Hosp	Zahleh	Male	68	Yes
Hamoud Hosp	Saida	Male	71	Yes
Rizk Hosp	Tripoli	Male	71	Yes
Taanial Hosp	Zahleh	Male	71	Yes
Al Rayyan Hosp	Baalbek	Female	73	Yes
Dar Salam Centre	Saida	Female	73	Yes
Haykal Hosp	Tripoli	Male	74	Yes
Abu Jawdeh Hosp	Maten	Female	76	Yes
Hamad Farhat Hosp	Hasbaiya	Male	76	Yes
Mount Lebanon Hosp	Aleyh	Male	78	Yes
Al Jabel Hosp	Baabda	Male	78	Yes
Makkassed Hosp	Beirut	Female	79	Yes
Rachaiya Gov Hosp	Hasbaiya	Female	79	Yes
Saydet Mawnet Hosp	Kesrwen	Male	80	Yes
Saint George Ajiltun	Kesrwen	Female	81	No
Hotel Due Hosp	Beirut	Male	81	Yes
Baalbek Gov Hosp	Baalbek	Female	84	Yes
Tebnen Hosp	Marjaayoun	Female	85	Yes
Dar Hekmeh Hosp	Hermel	Female	90	Yes
Serhal Hosp	Maten	Male	91	Yes
Iben Cina Hosp	Baalbek	Female	94	Yes
Abu Jawdeh Hosp	Maten	Female	97	Yes



Distribution of deaths by Governorate

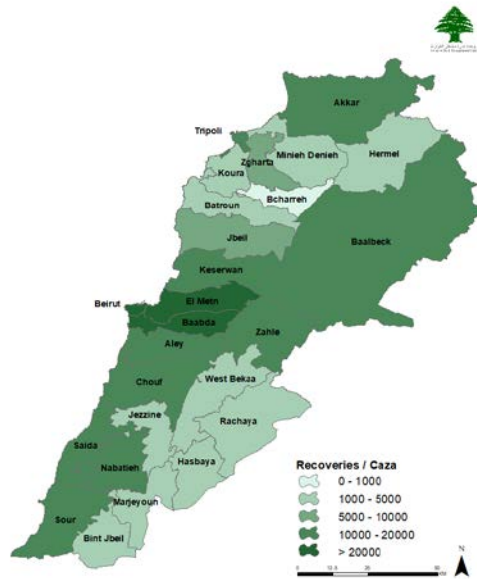


Ref : Ministry of Public Health

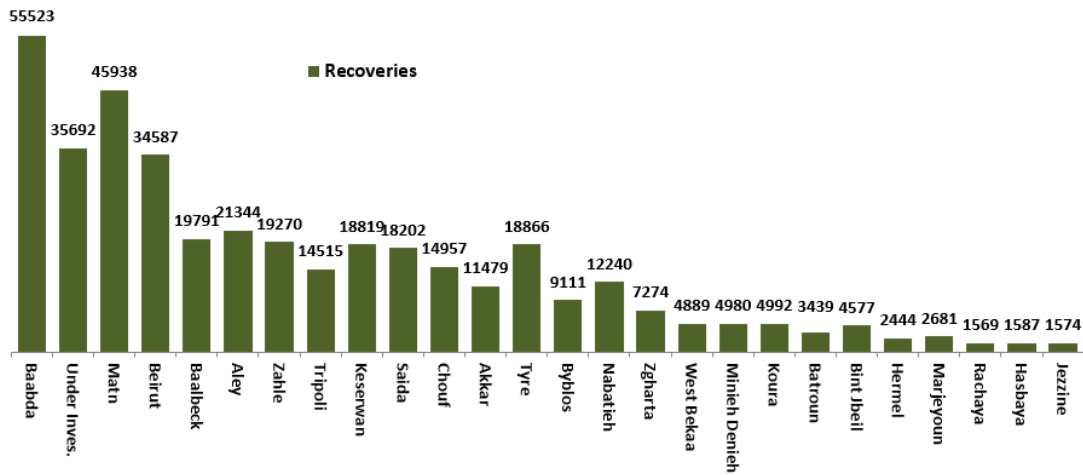
All reports and related decisions can be found at: <http://drm.pcm.gov.lb>

Or social media @DRM_Lebanon

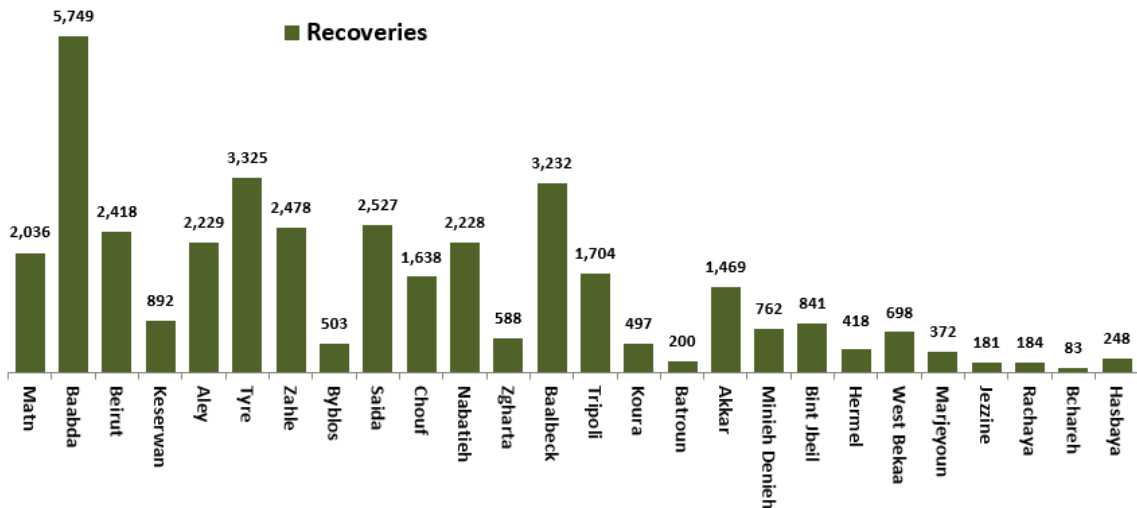
Distribution of Recoveries



Distribution of Recoveries per Casa



Distribution of Recoveries per Casa in the last 14 days

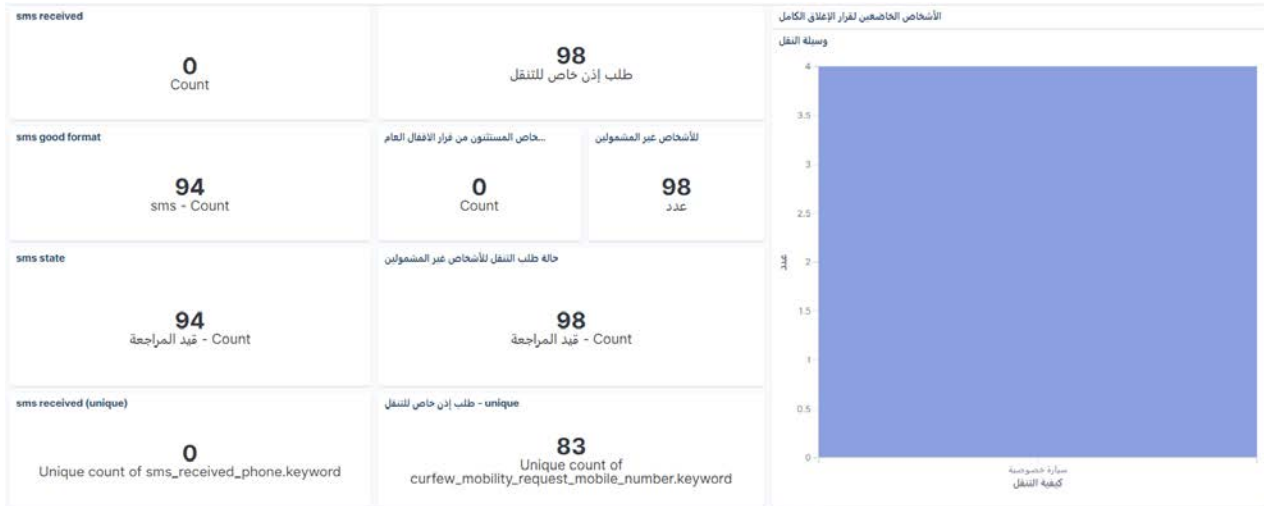


Ref : Ministry of Public Health

All reports and related decisions can be found at: <http://drm.pcm.gov.lb>

Or social media @DRM_Lebanon

Follow-up of citizens' mobility requests during the complete closure period according to the permission request mechanism via the IMPACT platform at the Ministry of Interior and Municipalities



Decision No. 26 / M / P of 11/1/2021 - Request for permission to move persons not covered by the general closure exceptions: Via the website COVID.PCM.GOV.LB or by sending an SMS to 1120

The online platform for registering the taking of the Coronavirus vaccine

استمارة التسجيل لأخذ اللقاح المضاد لفيروس كورونا
(كوفيد-19)
Covid-19 Vaccine pre-registration form

الجمهورية اللبنانية
وزارة الصحة العامة

<https://covax.moph.gov.lb>

الرجاء تحديد الفئة التي تنتمي إليها من بين الفئات المدرجة في القائمة أدناه
Please select to which category you belong among the ones listed below

فئات أخرى

Other

عامل في القطاع الصحي

Healthcare worker

Ref : Ministry of Public Health

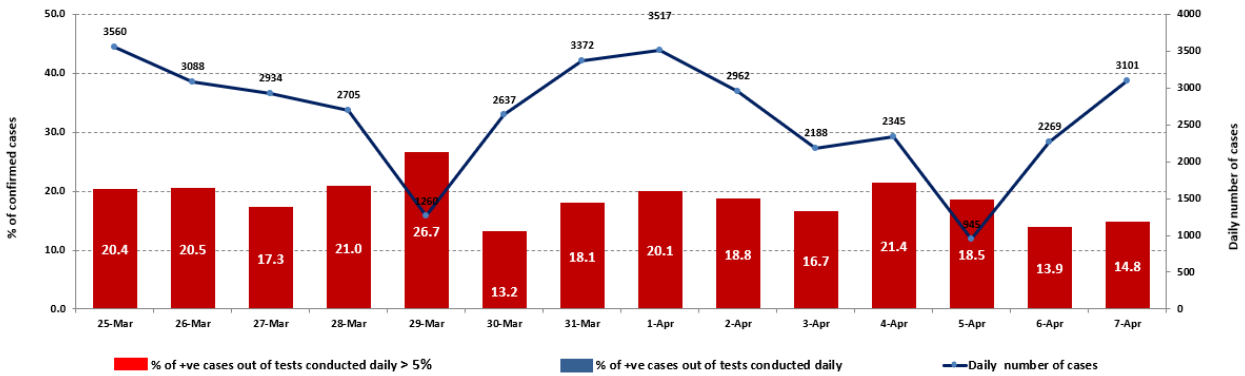
All reports and related decisions can be found at: <http://drm.pcm.gov.lb>

Or social media @DRM_Lebanon

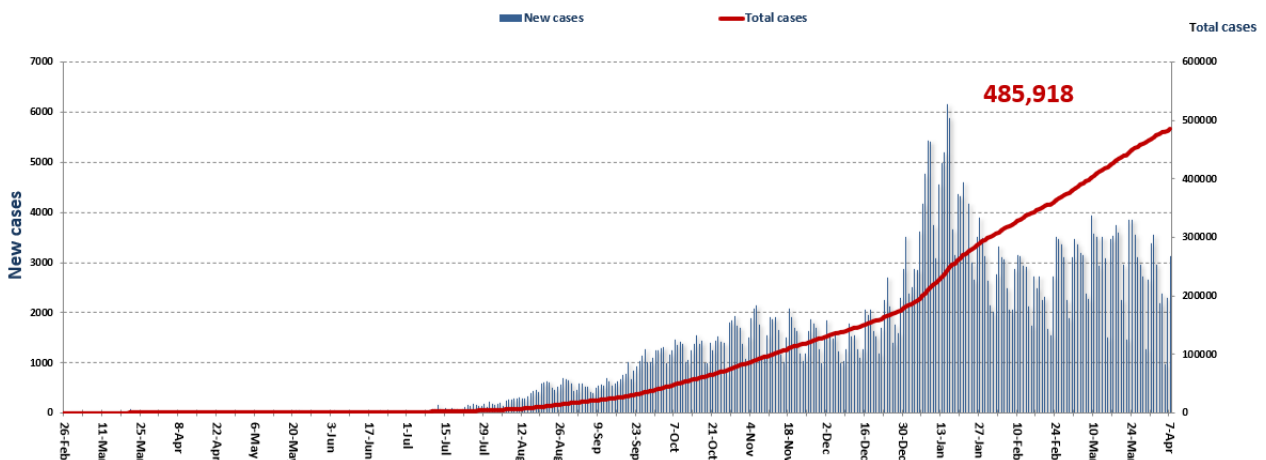
The National Awareness Campaign on the Coronavirus Vaccine (Questions and Answers)

There is currently no mechanism for getting the vaccine through a private doctor. The mechanism used is getting the vaccine at vaccination centers approved by the Ministry of Public Health. **This mechanism guarantees obtaining a vaccination certificate.**

The percentage of positive cases out of the number of daily checks during the past 14 days



Cumulative cases per day

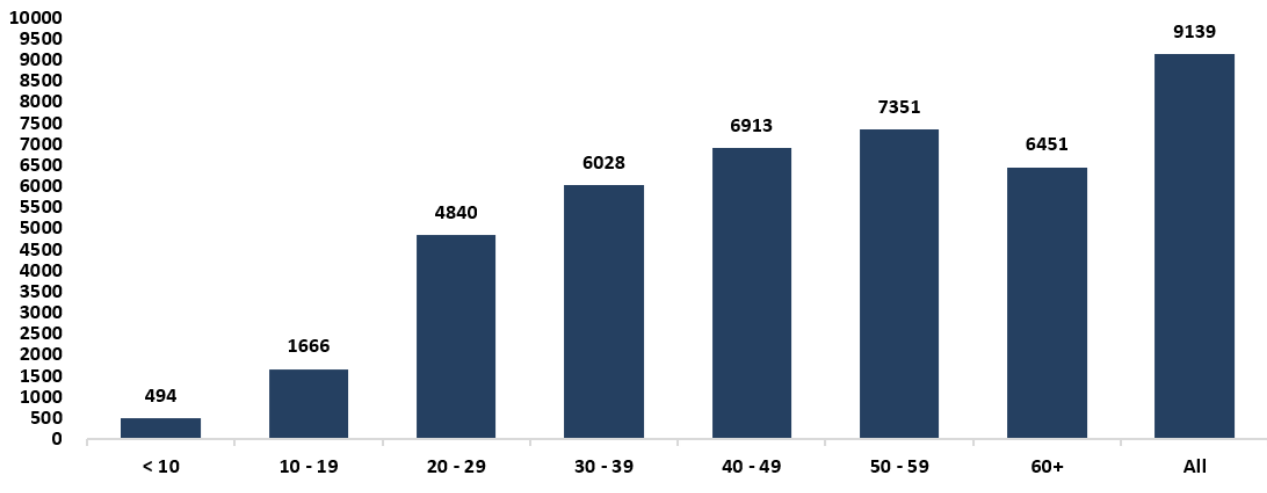


Ref : Ministry of Public Health

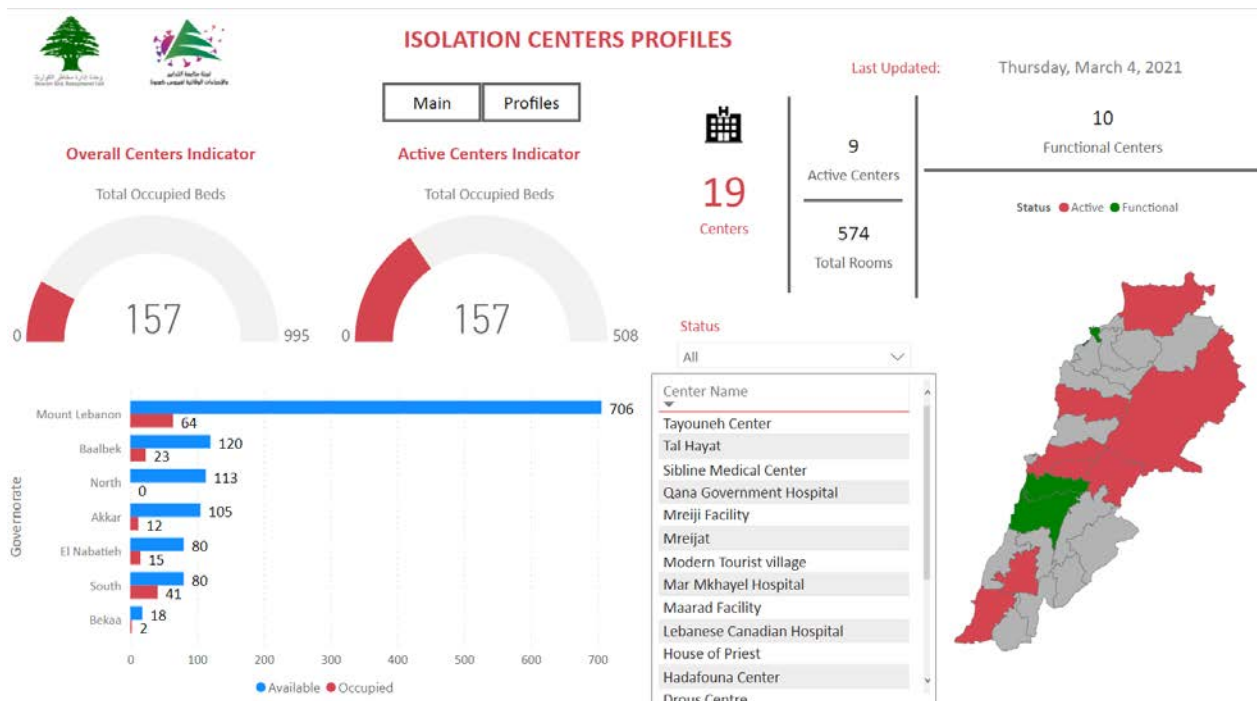
All reports and related decisions can be found at: <http://drm.pcm.gov.lb>

Or social media @DRM_Lebanon

Age-Specific Cumulative Incidence rate (/100000)



Occupancy rate of isolation centers for cases infected with Corona virus



For more information about the isolation centers' distribution and the percentage of their occupancy, enter the following link: <http://bit.ly/DRM-IsolationCentersProfiles>

Note: These centers have been equipped in cooperation with the National Committee for Follow-up of Preventive Measures and Measures to Confront Coronavirus, Governors and Municipalities, the United Nations Development Program, the World Health Organization, UNICEF, the Ministry of Public Health, the Syndicate of Nurses in Lebanon, and the Syndicate of Specialists in Social Work

Decisions and actions taken during the past 24 hours

Ministry of Public Health

The Minister of Public Health discussed with Representative Muhammad al-Hajjar the health conditions in the Iqlim al-Kharroub region in terms of support for health centers, especially the Sibliin Governmental Hospital, the only one in al-Kharroub region that addresses the Corona crisis

The Ministry of Public Health announced that the approved certificate of vaccination is given electronically to those who received two doses of the vaccine, and it is an electronic certificate that contains a bar code and issued on the data page of the concerned vaccinator through the electronic platform, without the need to sign or stamp it from the ministry.

The Ministry of Public Health issued Decision No. 381/1 based on the necessity to issue an official document confirming the vaccination of people outside the electronic national platform, which includes the measures to be taken by people who received the first dose of the vaccine outside Lebanon and brought the second dose with them, or who received the vaccine Through special initiatives with the aim of including them in the national platform for fertilization, which is as follows:

- Conducting an IgG test two weeks after completing the second dose of the vaccine and obtaining an official document from an accredited laboratory on or outside the Lebanese territory confirming the results of this test.
- Presenting a medical report on a unified medical prescription, signed and stamped with the seal of a doctor registered in one of the two Lebanese Medical Syndicates.
- The Preventive Medicine Department at the Ministry of Public Health issues an official document certifying that the person concerned will be vaccinated after submitting all documents and checking them.

The Ministry of Public Health reported that PCR examinations were completed for flights that arrived in Beirut and were conducted at the airport on March 30, 31, April 1, where the results showed that there were fifty-six (56) positive cases distributed over the following flights:

Direction	Company	Flight Number	Number of Cases
Baghdad	Iraqi Airways	131	1
Istanbul	Turkish Airlines	824	2
Abu Dhabi	EY	535	2
Baghdad	MEA	323	2
Erbil	MEA	325	1
Cairo	Egypt Airways	711	1
Al Najaf	MEA	327	8
Istanbul	MEA	268	5
Doha	MEA	437	1
Istanbul	Turkish Airlines	826	1
Total			24

Direction	Company	Flight Number	Number of Cases
Adis Abab	Ethopian Airways	406	2
Damascus	Q6	201	1
Oman	MEA	311	1
Berlin	EW	8982	1
Baghdad	Iraqi Airways	131	3
Cairo	MEA	305	2
Istanbul	Turkish Airlines	824	1
Sharqah	G9	385	6
Istanbul	MEA	266	2
Dubai	MEA	427	1
Total			20

Lebanese Red Cross

Cases transferred to the hospital	26,142 (114 New)	Ambulance centers	48	Number of additional ambulance centers ready to respond	87,887 (466 New)	Number of PCR tests transferred to laboratories	241,227
Number of being benefitting from awareness sessions	147,003	total number of respondents	8,915	Number of trained paramedics	1,498	Number of volunteers trained to transfer PCR tests	166
Number of trained managers for isolation centers	8,920	total LRC volunteers for covid 19	550	Number of university volunteers trained to conduct awareness sessions	321	The number of university volunteers trained to follow up on prevention measures in companies and institutions	1025
Number of prisons that has been disinfected	1,274	Total distributed posters, brochures, and flyers on covid19 prevention	1,274,023	Number of distributed equipment	318,548	Number of beneficiaries from educational electronic platforms COVID-19	6,210

Lebanese Army Forces

- The army units continue to distribute social aid (400,000 Lebanese pounds) to families with limited income in all Lebanese territories.
- Distributing food aid in various Lebanese regions through the CIMIC Office.
- Supporting the security services in implementing the decisions issued by the Council of Ministers.

General Directorate of State Security

Reporting the number of new positive cases in the various governorates and the cases in home quarantine.

Follow up the procedures approved at the air, land and sea borders, in cooperation with the teams of the Ministry of Public Health

General Directorate of Internal Security Forces

45,261 minutes have been written against violators of the closure decisions since 01/14/2021.

The reports that were written against the violators of the decisions of the general mobilization during the past 48 hours were distributed according to the regions as follows:

The number of seizure records during the past 24 hours					The total number of records since 03/08/2020	
Written records of violating institutions					1	
Written records of persons that violate curfew decision					0	
Written records of persons violating the decision to wear a mask					9	Beirut
Total					10	52,749
						66,119
						Begaa
						26,511
						North
						20,865
						South
						20,806
						Total
						186,790
Beirut	Mount Leb	Begaa	North	South		
3	0	7	0	0		

Ref : Ministry of Public Health

All reports and related decisions can be found at: <http://drm.pcm.gov.lb>

Or social media @DRM_Lebanon

General Directorate of General Security

- Carrying out patrols in various governorates, establishing fixed and mobile monitoring points to follow up the implementation of the general closure decision, issuing violations against violators in cooperation with municipalities, and alerting citizens to adhere to preventive measures.
- The decision of the Governor of South Lebanon to close the civil organization in the Serail of Sidon, starting 04/08/2021, due to the recording of Corona injuries.
- Reporting the percentage of compliance with the general mobilization decision in the governorates, which came as follows within the past 24 hours:

Beirut	South	North	Akkar	Beqaa	Nabatiyeh	Baalbek Hermel	Mount Leb
50%	50%	30%	25%	40%	45%	20%	40%

Ministry of Public Works and Transportation

Beirut Rafic Harriri International Airport:

Departing Flights		Arriving Flights	
Number of Flights	38	Number of Flights	40
Number of Departing Individuals	3,515	Number of Arrivals	3,809

Ports:

Port	Entered			Left		
	Export	Direction	#	Import	Direction	#
Beirut	Containers	Port Said	1	-	Battleshop	1
Tripoli	Materials	Sinagphore	1	Metals	Slovania	1
	Blank	Libya	1	Goods	Tassku	1
	Blank	Beirut	1			
	Containers	Beirut	1			
Saida	Commercial Butane	Zahrani	1			
	Metals	Egypt	1			
	Rocks	Turkey	1			
	Metals	Turkey	1			
Zahrani	Gasoil	Greece	1			
Total			10			3

General Decisions / Announcements

The following recommendations were issued by the Committee on Follow-up of Preventive Measures and Procedures to Confront the Coronavirus, held on 07/04/2021:

- Imposing a total curfew from seven in the evening until five in the morning throughout the blessed month of Ramadan, and similar measures are taken to those that were followed during the closure during the Easter period, with the following points emphasized:
 - Banning banquets, tents and Ramadan breakfasts
 - The necessity of obtaining permission from the IMPACT platform for charitable organizations and associations that distribute breakfast meals to fasting people.
 - Adherence to all preventive measures and measures for the Corona virus, including social distancing and mandatory wearing of the muzzle.
- Asking national religious authorities to warn against the consequences of non-compliance with preventive measures and measures for the Coronavirus during the blessed month of Ramadan and to take strict measures in places of worship during Friday prayers and sermons within 30% of their capacity, provided that believers obtain permission to go from the platform.

The Presidency of the Council of Ministers issued Circular No. 5/2021 on 3/26/2021, whereby, based on the proposal of the Ministerial Committee, all public departments and institutions are required to work with an attendance rate not exceeding 50%

- Re-extension of the general mobilization status for a period of six months, starting from 1/4/2021 until 9/30/2021 inclusive, with the enforcement of the measures and procedures imposed and their implementation during the general mobilization extension period.
- Request the technical committee charged with following up on the control of the Coronavirus, to complete communication with the concerned authorities, trade unions and associations, in order to put it into practice and to adhere to the procedures and measures that contribute to mitigating the spread of the epidemic.

Note: The full text of the decision can be found on the website <http://drm.pcm.gov.lb>

Ref : Ministry of Public Health

All reports and related decisions can be found at: <http://drm.pcm.gov.lb>

Or social media @DRM_Lebanon

Examples of lack of adherence to safety measures

- Overcrowding in foodstuff stores, failure to organize roles on payment boxes, failure to respect the safe distance between customers, and the obligation to wear masks.
- Overcrowding inside banks and gatherings in front of cash withdrawal machines and money transfer offices.

Laboratories that did not comply with the procedures approved by the MoPH About the information required to be recorded for infected cases within the past 24 hours

Laboratories that did not specify the Governorate	
Laboratory/Hospitals	Cases
BRL019 - General Security Laboratories	16
NBH316-Hospital Ragheb Harb	4
BRH610-Hospital American university	3
BDH558-Hospital Saint Georges Hadath	2
BRH626-Hotel Dieu de France	2
MTH548-Hospital Serhal / Rabieh	2
BDD012-Hayaa Sohia, Bir Abed	1
BRD003-Saint Joseph, Achrafieh	1
BRH637-Hospital Haddad des Soeurs du Rosaire /	1
KWL001 - Wakim Laboratories	1
MTH569-Hospital Bellevue Medical Center	1

Number of positive cases without specifying the place of residence	
Laboratory/Hospitals	Cases
BRL019 - General Security Laboratories	16
BDL003-Laboratoire Inovie / Fayyadieh	13
BRL045-Medical Diagnostic Treatment Center (MDTC)	8
NBH316-Hospital Ragheb Harb	7
JBL001-Laboratoire Akiki et Boulos	6
BRH610-Hospital American university	3
BRH626-Hotel Dieu de France	3
BDH558-Hospital Saint Georges Hadath	2
BRL007 - Doctors Center	2
MTH548-Hospital Serhal / Rabieh	2
NBH301-Hospital Nabatieh Nabih Berry Gouvernemental	2
AKH116-Hospital Centre Medical Youssef / Halba	1
BDD012-Hayaa Sohia, Bir Abed	1
BDH558-Hospital Sacre Coeur	1
BDL009 - Naqaa Medical Center	1
BRD003-Saint Joseph, Achrafieh	1
BRH637-Hospital Haddad des Soeurs du Rosaire /	1
KWL001 - Wakim Laboratories	1
MTH569-Hospital Bellevue Medical Center	1
SDL001- Al Karim Medical Lab	1

Number of positive cases without a phone number	
Laboratory/Hospitals	Cases
BDH505-Rafic Hariri University hospital	3
BRH626-Hotel Dieu de France	2
BJH303-Hospital Tibnine Gouvernemental	2
BDH558-Hospital Saint Georges Hadath	1
BJH305-Hospital Bent Jbayl Gouvernemental	1

Governmental Labs

المختبر	الموقع
RHUH	مستشفى رفيق الحريري الجامعي
HALBA Governmental Hospital	مستشفى حلبا الحكومي
TRIPOLI Governmental Hospital	مستشفى طرابلس الحكومي
BATROUN Governmental Hospital	مستشفى البترون الحكومي
Ftuh Kesserwan Gov. Hospital	مستشفى فتوح كسروان الحكومي (البوار)
Seblin Governmental Hospital	مستشفى سبلين الحكومي
Saida Governmental Hospital	مستشفى صيدا الحكومي
NABIH BERRI Gov. Hospital	مستشفى نبيه بزري الحكومي الجامعي
TEBNIN Governmental Hospital	مستشفى تبنين الحكومي
BINT JBEIL Governmental Hospital	مستشفى بنت جبيل الحكومي
BAALBECK Gov. Hospital	مستشفى بعلمك الحكومي
Hermel Governmental Hospital	مستشفى الهرمل الحكومي
ELIAS EL HRAWI Gov. Hospital	مستشفى الرئيس الياس الهراوي الحكومي
Baabda Governmental Hospital	مستشفى بعيدا الحكومي

Private Labs

المختبر	الموقع
AUBMC	مستشفى الجامعة الأميركية
Hôtel Dieu de France	مستشفى أوتيل ديو الجامعي
Laboratoires Rodolphe Mérieux (Université Saint-Joseph)	مختبرات رودولف ميرييو (الجامعة اليسوعية - المتحف)
George-Saint UMC Hospital	مستشفى القديس جاورجيوس الجامعي
General Makassed Hospital	مستشفى المقاصد
LAU Medical Center - Rizk Hospital	مستشفى رزق الجامعي
CHU - Geitawi Libanais Hospital	مستشفى اللبناني الجعيتاوي الجامعي
Hôpital Notre-Dame du Rosaire	مستشفى الوردية
Clemenceau Medical Center (CMC)	مركز كليمنصو الطبي
Doctors' Center	مختبر مركز الأطباء
Fontana Laboratories	مختبر فونتانا (الحمرا)
General Security Laboratories	مختبر الأمن العام (العدلية)
CEMA	مختبر سيما
Ghorra-Jabre Laboratories	مختبرات جبر و غرة
Saint Marc Medical & Diagnostic Center	مختبر السان مارك
PHD	مختبر PHD
Saint Joseph Medical Center	مختبر مركز مار يوسف الطبي
Dar al Hawraa Medical Center	مختبر دار الحوراء
Bey Lab - Furn El Shubbek	مختبر باي لاب
Laboratoire Moderne (Modern Lab. - Berjaoui)	المختبرات الحديثة
Sahel General Hospital (SGH)	مستشفى الساحل
Al Zahraa Hospital	مستشفى الزهراء الجامعي
Al Rassoul Al Aazam Hospital	مستشفى الرسول الأعظم
Bahman Hospital	مستشفى بهمن
National Diagnostic Services Company (NDSC)	مختبر ناشيونال دياغنوستك سيرفس كومباني
Center Diagnostic Medical	مختبر الدكتور محمود عثمان - مركز التحاليل الطبية
ADC (Center Diagnostic American)	مختبر أميريكين دياغنوستك سنتر
Mount Lebanon Hospital	مستشفى جبل لبنان
Hadath - George-Saint Hôpital	مستشفى السان جورج الحدث
Laboratory Al Hadi	مختبر الهادي
INOVIE	مختبر INOVIE Liban-
Molecular Biology and Cancer immunology Laboratory in LU	مختبر علم الأحياء الجزيئية في الجامعة اللبنانية
Saint-Michel Lab	مختبر سان ميشال للتحاليل الطبية
Sacré - Coeur Hôpital	مستشفى قلب يسوع
Clinigene	مختبر كلينجان
Dr. Samir Serhal Hospital	مستشفى سرحال
Life for Trans medical	مختبر ترانس ميديكال فور ليف
Hopital St. Joseph	مستشفى مار يوسف (مركز ريموند وعائدة نجار)
Haroun Hospital	مستشفى هارون

Bellevue Medical Center (BMC)	مختبر مركز الشرق الأوسط الصحي ش.م.ل	بصالييم
Haykal Albert Hôpital	مستشفى بلقو	المنصورية
University of Balamand	مستشفى هيكل	الكورة
Centre Hospitalier du Nord (CHN)	مختبر جامعة البلمند	الكورة
Saydet Zghorta University MC	مركز الشمال الاستشفائي	زغرتا
Family Medical Center – Zghorta	سيده زغرتا – المركز الجمعي الطبي	زغرتا
Mazloum Hospital	المركز العائلي الطبي	زغرتا
Al Mounla Hospital	مستشفى المظلوم	طرابلس
Nini Hospital	مستشفى المنلا	طرابلس
LMSE	مختبر ميكروبيولوجيا الصحة والبيئة، المعهد العالي للدكتوراه، الجامعة اللبنانية	طرابلس
Islamic Hospital	المستشفى الإسلامي الخيري	طرابلس
Dar Chifaa Hospital	مختبر مستشفى دار الشفاء	طرابلس
Secours des Dame-Notre – CHU	مستشفى سيده المعونات الجامعي	جبيل
Boulos & Akiki Lab	مختبر عقيقي وبولس	جبيل
Wakim Centre Médical	مختبر واكيم	جونية
Elite Medical Center	مختبر إيليت الطبي	جعيتا
Hospital Wzein Ain	مستشفى عين وزين	الشوف
Eva Lab	مختبر إيفا لاب	عرمون
UMC Hospital Hammoud	مستشفى حمود الجامعي	صيدا
Al Karim Medical Laboratory (KML)	مختبر الكريم	صيدا
Al Labib Medical Center	مركز لبيب الطبي	صيدا
	مختبر الـ Lebanese Diagnostic Center	صور
Family Medical Laboratories	مختبر العائلة	الغازية
Hospital Harb Ragheb Sheikh	مستشفى الشيخ راجب حرب	النبطية
SDC (Center Diagnostic Sabbah)	مختبر الصباح	النبطية
Al Salam Laboratories	مختبر السلام	النبطية
Hopital Du Secours Populaire	مختبر مستشفى النجدة الشعبية	النبطية
Jabal Amel Hospital	مستشفى جبل عامل	صور
Mashrek Diagnostic Center (MDC)	مختبر المشرق للتشخيص الطبي	صور
Dar Al Hikmah Hospital	مستشفى دار الحكمة	بعلبك
Hospital University Dar Al Amal	مستشفى دار الأمل الجامعي	بعلبك
Medical Care Laboratories - Baalbek	مختبرات العناية الطبية	بعلبك
Medical Care Laboratories - Labweh	مختبرات العناية الطبية	البوة
Tal Chiha Hospital	مستشفى تل شيحا	زحلة
Hospital General Khoury	مستشفى خوري	زحلة
MCC (Center Care Medical)	مختبر ميديكال كير سنتر	زحلة
Hopital Libano-Francais	المستشفى اللبناني الفرنسي	زحلة
Hopital Reyak	مستشفى رياق	رياق

مختبرات المستشفيات العسكرية

Hôpital Central Militaire	المستشفى العسكري المركزي في بيروت	بيروت
---------------------------	-----------------------------------	-------

المختبرات المؤهلة لأخذ عينات "المسحات الأنفية" بطريقة Drive-Thru

Medical Diagnostic Treatment Center (MDTC)	مختبر ميديكال دياغنوستك تريتماننت سنتر (الحمراء)	بيروت
ALS CIC SAL Med-Lab	مختبر ميد لاب الحمراء – الجفینور	بيروت
Itani Medical Laboratories	مختبرات عيتاني	بيروت
Sakiet Al Janzir Laboratories	مختبر ساقية الجنزير	بيروت
ABC Laboratories	مختبر أ ب سي	الأشرفية
Mouawad Medical Laboratory	مختبرات معوض الطبية	الشيح
Rihan Medical Center	مختبرات الريحان (د. فواد ريحان)	الشيح
United Healthcare Center	مختبرات المتحدة للرعاية الصحية	الشيح
Al Naqaa Medical Center	مختبر النقاء الطبي	الأوزاعي
Laboratoire le Boulevard	مختبرات البولفار	بدارو
CHU Al Yusef	مركز اليوسف الاستشفائي التعليمي	حلبا
Hopital El Koura	مستشفى الكورة	الكورة
Kesserwan Medical Center	مركز كسروان الطبي	كسروان
Lab Expert	مختبر إكسبرت لاب	المنصورية
Saint Elie Laborator	مختبر سانت إيلي	انطلياس
BMP Laboratory	مختبر ب م ب	ذوق مصبح
Laboratoire Dr. Elie Taleb	مختبر الدكتور إيلي طالب	جونية
MEMER Leb	مختبرات الشرق الأوسط للتحاليل الطبية	جونية
Family Clinic	مختبر فاميلي كلينيك	صيدا
First Lab	مختبر فيرست لاب	العاقبية

Ref : Ministry of Public Health

All reports and related decisions can be found at: <http://drm.pcm.gov.lb>

Or social media @DRM_Lebanon

Riyad Medical Laboratories	مختبرات الرياض الطبية	جب جنين
ADC	مختبر مركز التشخيص الطبي	جب جنين
LAB Life	مختبر لايف لاب	بعلبك
Beqaa Medical Lab	مختبر مركز البقاع الطبي	زحلة
Laboratoires Saint George	مختبرات السان جورج	زحلة
Araibi Medical Laboratories	مختبرات العربي الطبية	رياق
Beqaa Hospital Laboratories	مختبر مستشفى البقاع	البقاع

Ref : Ministry of Public Health

All reports and related decisions can be found at: <http://drm.pcm.gov.lb>

Or social media @DRM_Lebanon