



## Lebanon National Operations Room

### Daily Report on COVID-19

Friday, December 04, 2020

Report #261

Time Published: 07:00 PM

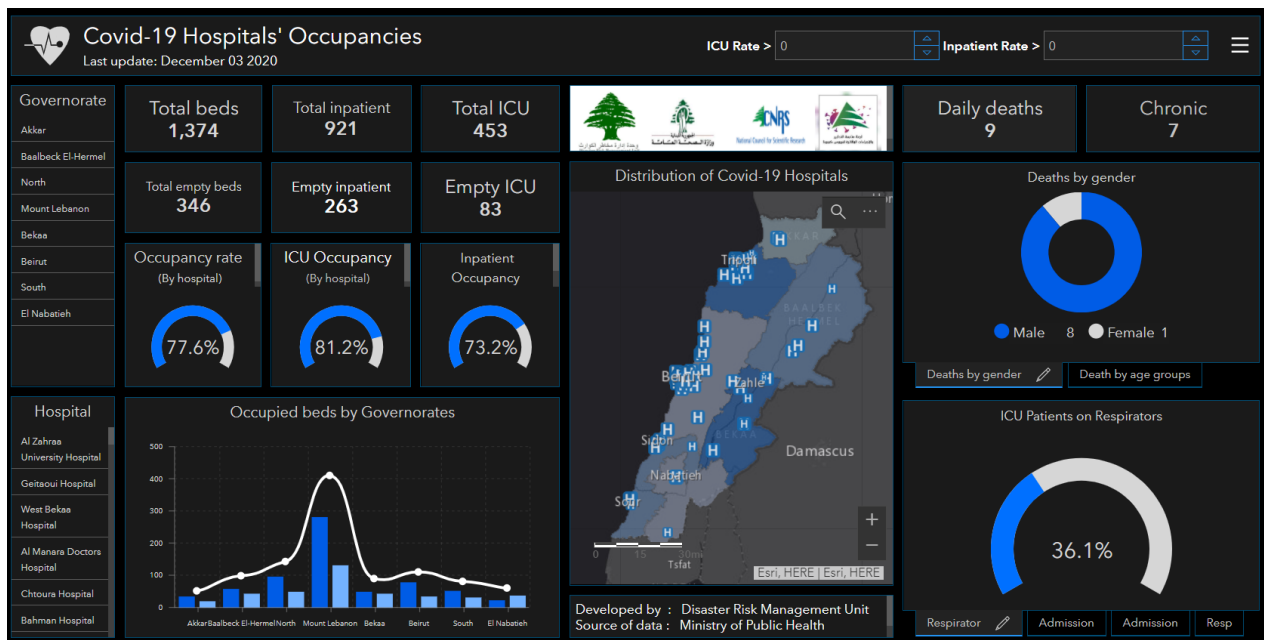
**New in the report:**

The online platform for the distribution of Covid-19 beds and the percentages of hospital occupancies

<b>1,478</b> New Cases		<b>134,254</b> Total Cases since 21.2.2020		<b>1,078</b> Total Deaths		<b>86,019</b> Total Recovered			
<b>1,472</b> Residents	<b>6</b> Expats	<b>131,385</b> Residents	<b>2,869</b> Expats	<b>11</b> New Deaths		<b>1,877</b> New Recovered			
<b>132</b> Deleted Status due to its recurrence	<b>1,770</b> Total Cases in the Health Sector		<b>47,157</b> Total Active Cases		<b>935</b> Hospitalized Cases				
<b>15%</b> Positivity rate	<b>0</b> Cases in the Health Sector		<b>46,222</b> Cases in Home Isolation		<b>132</b> Ventilated Cases	<b>4</b> New Cases in ICU	<b>374</b> Total cases in ICU	<b>561</b> Mild cases	
<b>1,541,613</b> COVID-19 Tests since 21.2.2020		<b>Lebanon Status compared to the World</b>							
<b>1,205</b> COVID-19 Tests at Airport within 24 hrs.		<b>10,808</b> COVID-19 tests for residents within 24 hrs.		<b>Total Cumulative</b>		<b>134,254</b>		<b>65,757,854</b>	
				<b>Total Deaths</b>		<b>1,078</b>		<b>1,515,873</b>	
				<b>Deaths percentage</b>		<b>0,80%</b>		<b>2.3%</b>	
				<b>Total recoveries</b>		<b>86,019</b>		<b>45,582,039</b>	

Ref: Ministry of Public Health Data

### Occupancy rate of COVID-19 Beds and Availability



For daily information on all the details of the beds distribution availability for Covid-19 patients among all governorates and according to hospitals, kindly check the dashboard link:

Computer : <https://bit.ly/DRM-HospitalsOccupancy-PC>

Phone: <https://bit.ly/DRM-HospitalsOccupancy-Mobile>

All reports and related decisions can be found at: <http://drm.pvm.gov.lb>

Or social media @DRM\_Lebanon

## Distribution of Cases by Villages

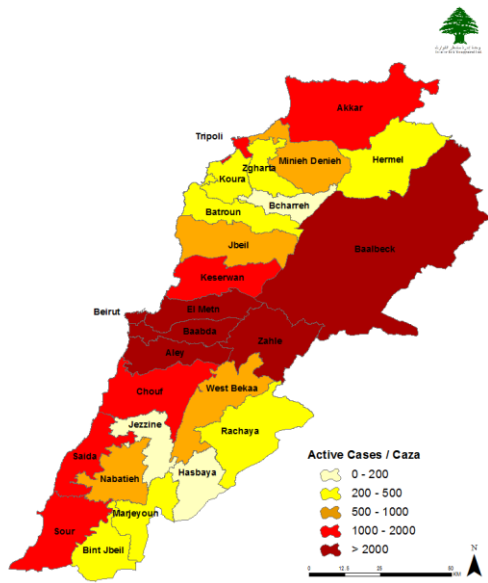
BEIRUT	100	BAABDA	186	MATEN	143	CHOUF	61	KESERWAN	37	ALEY	80
AIN MRAISSEH	7	CHIYAH	19	BORJ HAMMOUD	15	DAMOUR	2	ZOUK MKAYEL	5	EL AAMROUSSEIYEH	1
QREITEM	3	JNAH	10	SINN FIL	6	HARET EN NAAMEH	1	JOUNIEH GHADIR	1	HAY ES SELLOM	14
HAMRA	9	OUZAAI	7	JISR BACHA	1	CHHM	9	ZOUK MOSBEH	6	EL QOUBBEH	2
AIN TINEH	3	BIR HASSAN	2	JDAIDET MATN	2	DALHOUN	1	ADONIS	2	KHALDEH	6
MSAITBEH	3	MAHATET SFAIR	1	BAOUCHRIYEH	5	DARAIYA	3	HARET SAKHR	3	EL OUMARA	12
MAR ELIAS	5	GHBAYREH	7	DAQOURA	3	KETERMAYA	3	TABARJA	2	DEIR QOUBEL	1
UNESCO	2	AIN ROUMMANEH	11	RAOUDA	1	SIBLINE	6	SAFRA	1	AARAMOUN	5
TALLET KHAYAT	1	FURN CHEBBAK	6	SABTIYEH	4	BOURJEIN	1	AAQAYBEH	1	BCHAMOUN	1
SANAYEH	2	HARET HREIK	39	DEKOUANEH	10	BARJA	4	AJALTOUN	1	BLAYBEL	2
ZARIF	1	LAYLAKEH	3	ANTELIAS	8	JIYEH	3	BALLOUNEH	3	BDADOUN	3
MAZRAA	3	BORJ BRAJNEH	27	JALL DIB	3	JADRA	2	DARAIYA	2	BSOUS	1
BORJ ABOU HAIDAR	1	MREJJEH	9	NAQQACH	2	OUARDANIYEH	1	JAATA	2	ALEY	4
BASTA FAOUQA	2	TAHOUITAT GHADIR	2	AAMARET CHALHOUB	1	MGHAYRIYEH	1	MAAMELTEIN	1	KAHHALEH	1
AAMLIYEH	1	BAABDA	1	ZALQA	7	AIN ZHALTA	1	KFAR HBAB	1	QMATIYEH	1
MALAAB BALADI	1	HAZMIYEH	10	BYAQOUT	1	BAAQLINE	4	GHIRAS	1	GHBABOUN	1
TARIQ JDIDEH	14	HADATH	15	DBAYEH	1	AIN QANI	2	HARISSA	1	AIN EJ JDIDEH	1
RAS NABAA	4	LOUAYZEH	1	DEIR AAOUKAR	1	JDAIDEH	1	BIZHEL	1	KEYFOUN	1
PATRIARCAT	1	KFAR CHIMA	1	MANSOURIYEH	7	BEQAATA	3	NAHR ED DAHAB	1	BAYSSOUR	1
RMEIL	10	OUADI CHAHROUR	2	FANAR	6	AIN QUZAIN	5	QLEIAAT	1	MEJDLAIYA	1
ACHRAFIYEH	16	AABADIYEH	1	AIN SAADEH	23	KHREIBEH	1	FARAYA	1	DFOUN	1
AADLYEH	2	AARAIYA	4	BSALIM	1	BATLOUN	1	ZGHARTA	26	QABR CHMOUN	1
OTHER	9	JAMHOUR AARAIYA	1	MTAYLEB	2	MMASSER CHOUF	4	ZGHARTA	12	AABEY	2
JBEIL	30	QORNAYEL	1	BEIT KKKO	3	JBAA	1	KFAR DLAQOUS	2	KFAR MATTA	2
JBEIL	8	JOUAR HAOUZ	1	QORNET CHEHOUANE	1	BAROUK	1	RACHAINE	1	BHAMDOUN	1
MASTITA	1	KFAR SELOUANE	5	RABOUEH	1	TRIPOLI	71	BIADER RACHAINE	1	SAOUFAR	2
BLAT (JBAYL)	2	OTHER	10	BEIT ECH CHAAR	1	EZ ZEITOUN	5	KFAR HATA	1	BTATER	2
AAMCHIT	8	KOURA	28	MAZRAAT YACHOUAA	2	TRABLOUS ET TALL	2	ARDEH	1	IGHMID	1
KFAR KEKHEH	1	BECHMIZZINE	1	BIKFAYA	1	EL QOUBBEH	16	HARET EL FAOUAR	1	AIN DARA	1
HALATE	6	DAR BAAECHTAR	1	BEIT CHABAB	1	EZ ZAHRIYEH	2	IAAL	1	OTHER	8
MOUNSEF	1	KFAR HATA	3	BHERSAF	1	TABBANEH	8	KFAR YACHIT	1	SOUR	17
EHMEJ	1	BTOURATJ	1	AIN AALAQ	1	MINA	10	RAS KIFA	1	SOUR EL BASS	1
HBOUB	1	QALHAT	1	AATCHANEH	4	MINA JARDINS	1	KARM SADDEH	1	BORJ ECH CHEMALI	1
OTHER	1	ENFEH	5	BROUMMANA	1	QALAMOUN	2	MIRIATA	1	JOUAIYA	1
BATROUN	12	DAHR EL AIN	5	JOURET EL BALLOUT	1	BEDDAOUI	4	OTHER	2	AAYTIT	2
THOUM	2	BARSA	1	BAABDAT	2	MADINEH EJ JDIDEH	1	BAALBECK	208	QANA	2
CHIKKA	3	NAKHLEH	3	BEIT MERI	1	OTHER	20	BAALBEK	15	MAAROUB	3
CHIBTINE	1	EL MTAOUILEH	1	MONTEVERDI	3	BCHAREH	5	CHRAOUNEH	1	BAZOURIYEH	1
BIJDARFIL	3	OTHER	6	MROUJ	2	BCHARREH	4	RAS EL AIN	1	CHEHOUR	1
OUAJH EL HAJAR	1	MINIEH DENIEH	30	AINTOURA (	1	TOURZA	1	DOURIS	7	CHAAITIYEH	1
HAMAT	1	NABI YOCHEAA	2	AAYROUN	1	SAIDA	83	IAAT	1	JBAL EL BOTM	1
HRAYEQ	1	MINIEH	11	MAR MOUSSA	1	SAIDA EL QADIMEH	4	HAOUCH SAFIYEH	1	BORJ RAHHAL	1
AKKAR	68	SIR ED DANNIYEH	2	BASKINTA	1	HLALIYEH	2	NAHLEH	3	OTHER	2
HALBA	4	AASSOUN	2	OTHER	3	AABRA	4	MAJDALOUN	1	JEZZINE	5
CHEIKH MOHAMMAD	1	SFIREH	1	ZAHLE	99	MIYEH OU MIYEH	3	MAQNEH	2	OUADI JEZZINE	2
MACHHA	2	QARHAIYA	1	EL MIDANE	3	AIN EL HELOUEH	4	KFAR DAN	1	CHOUALIQ	2
HAYZOUQ	1	BAKHAOOUN	10	ER RASSIYEH	3	AABRA	8	HADATH (	4	MAZRAAT DARAYA	1
SOUAISSET AAKKAR	1	OTHER	1	EL BERBARA	1	QRAIYEH	2	RAS BAALBEK	1	NABATIYEH	26
ZOUQ EL HBALSA	2	WEST BEKAA	41	KARAK NOUH	3	AIN ED DELB	1	FEKEHEH	4	NABATIYEH TAHTA	4
TIKRIT	2	MACHGHARA	5	HAOUCH EL OUMARA	1	GHAZIYEH	6	JDAIDET EL FEKEHEH	1	NABATIYEH BAYAD	1
BEINO	1	DEIR AIN EJ JAOUZEH	1	HAOUCH EL OUMARA	2	ARZAI	1	AIN	1	NABATIYEH MANSURA	1
AIN YAAQOUB	1	KHIRBET QANAFAR	2	ZAHLEH ARADI	2	KHARAYEB	8	AARSAL	1	KFAR ROUMMANE	2
AKKAR EL AATIQA	3	KEFRAIYA	2	TOUAYTEH	1	SARAFAND	2	LABOUEH	4	ROUMINE	1
HAYSSA	1	AANA	2	HAZERTA	1	BISSARIYEH	1	QAA BAALBEK	1	HOUMINE ET TAHTA	2
BELLANET EL HAYSSA	2	MANSOURA	1	ABLAH	7	KAOUTARIYE SIYAD	2	HARBATA	1	DEIR EZ ZAHRANI	1
TALL MEAAAYANE	1	AAMMIQ	1	QAA ER RIM	2	AANQOUN	31	HAY EL MATHANEH	1	HAROUF	4
BEBNINE	5	JOUBB JANNINE	1	KSARA	5	OTHER	4	CHAAT	1	JIBCHIT	2
AABDEH	1	KAMED EL LAOUZ	1	OUADI EL AARAYECH	1	MARJEYOUN	6	YOUNINE	2	INSAR	3
KHANE EL HAYAT	1	GHAZZEH	6	MAKSEH	3	AADAYSSEH	2	KNEISSEH	1	QSAIBEH	1
BERQAYEL	6	SOULTAN YAAQOUB	1	TAALABAYA	9	KFAR KILA	2	YAMMOUNEH	1	KFAR SIR	3
BZAL	1	YAAQOUB ET TAHTA	1	JDITA	1	TAYBEH	1	BEDNAYEL (	19	OTHER	1
DINBOU	1	QARAQOUN	2	SAADNAYEL	3	SOUANEH	1	QSARNABA	3	BINT JBEIL	10
BEIT YOUNES	1	HAOUCH EL HARIMEH	3	QABB ELIAS	7	HASBAYA	14	TEMNINE EL FAOUQA	5	BENT JBAYL	1
BEIT AYOUN	1	SOHMOR	6	BOUAREJ	1	HASBAYA	6	BEIT CHAMA	2	RMAYCH	5
JDAIDET EL QAYTEAA	1	MARJ	6	BARR ELIAS	8	AIN QINIA	4	HAOUCH ER RAFQA	8	KFAR DOUNINE	1
MICHMICH	1	HERMEL	17	AANJAR	1	CHEBAA	1	TEMNINE ET TAHTA	11	KAFRA	1
QORNEH	1	HERMEL	5	MAJDEL AANJAR	7	KAOUKABA	1	KFAR DABACH	1	DEBL	1
RAHBEH	4	QASR	7	MASNAA	1	OTHER	2	CHMISTAR	16	BEIT LIF	1
AIN EZ ZAYT	1	OTHER	5	RIYAQ	5	OTHER	57	HAOUCH SNAID	2		
MACHTA HAMMOUD	2	RACHAYA	14	AALI EN NAHRI	3			TARAYA	9		
AAIDAMOUN	1	RACHAIYA EL OUADI	4	QOUSSAYA	1			SERRAINE ET TAHTA	1		
QBAYAT	1	BAKKIFA	1	TERBOL	1			SERRAINE FAOUQA	4		
AANDQET	1	KFAR QOOUQ	1	AIN KFAR ZABAD	1			KHODR (BAALBEK)	6		
QUADI KHALED	5	KFAR DENIS	1	KFAR ZABAD	2			NABI CHIT	6		
AKROUM	1	KAOUKABA	1	OTHER	13			HAOUR TAALA	3		
SAHLEH	1	KHIRBET ROUHA	3					BRITAL	34		
OTHER	9	RAFID	1					NABI CHBAT	1		
		AAYTA EL FOUKHAR	2					OTHER	20		

All reports and related decisions can be found at: <http://drm.pvm.gov.lb>

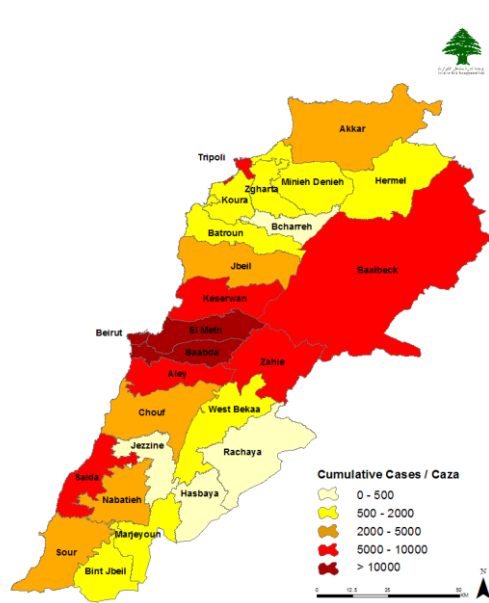
Or social media @DRM\_Lebanon

## Distribution of Active and Cumulative Cases

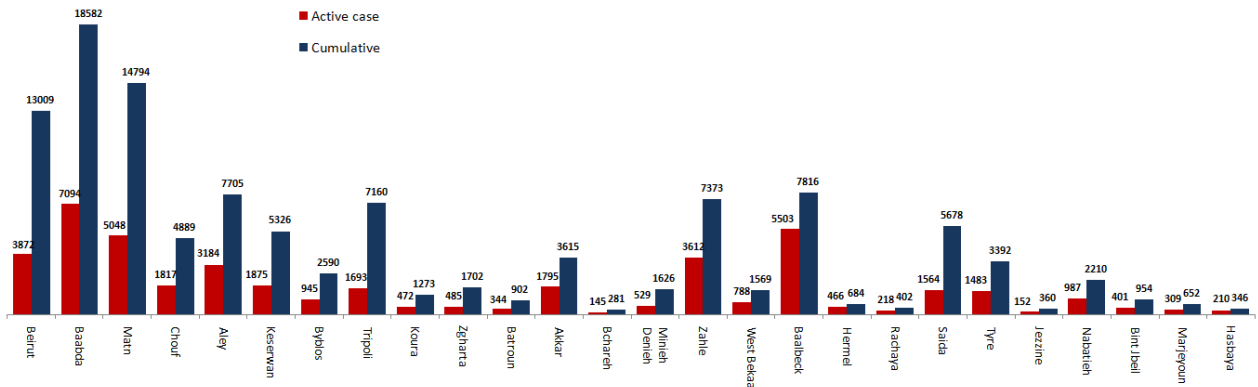
### Distribution of Active Cases



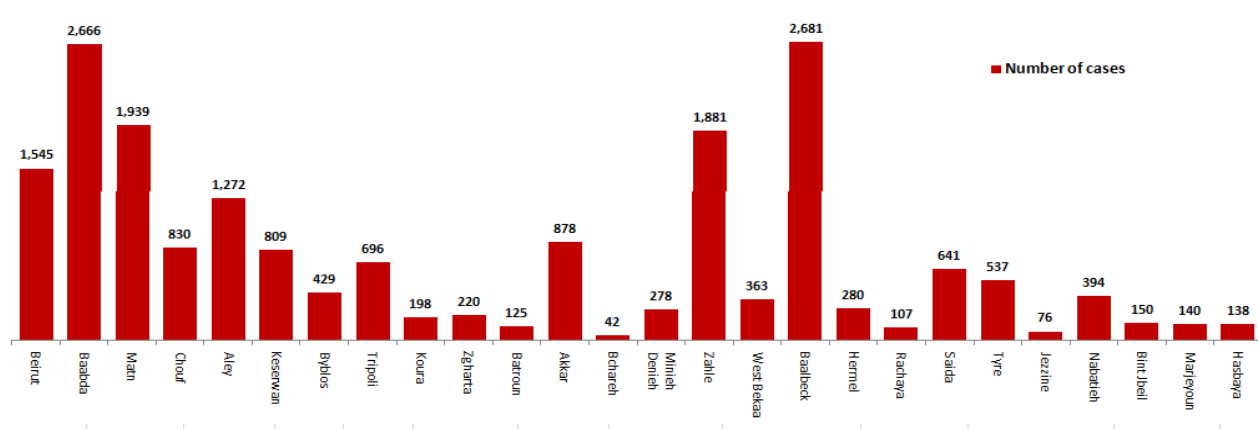
### Distribution of Cumulative Cases



## Number of Cases by Location



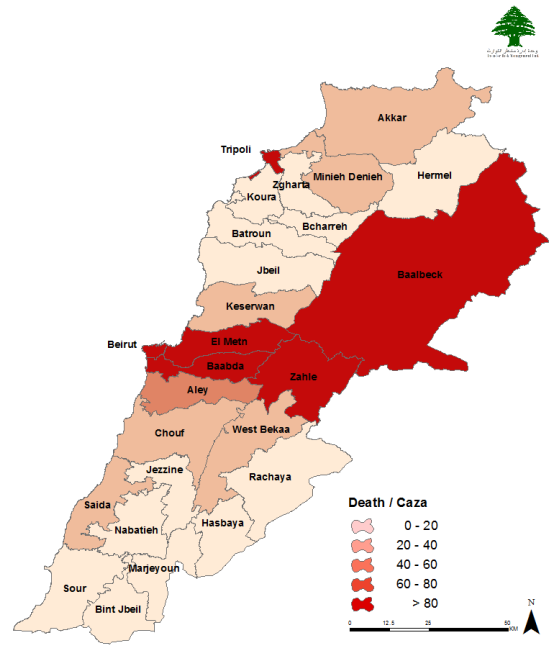
## Number of cumulative cases for the last 14 days



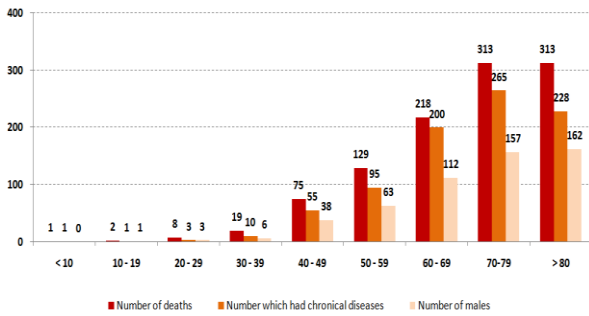
## Distribution of Death Cases

### Distribution of deaths during the past 24 hours

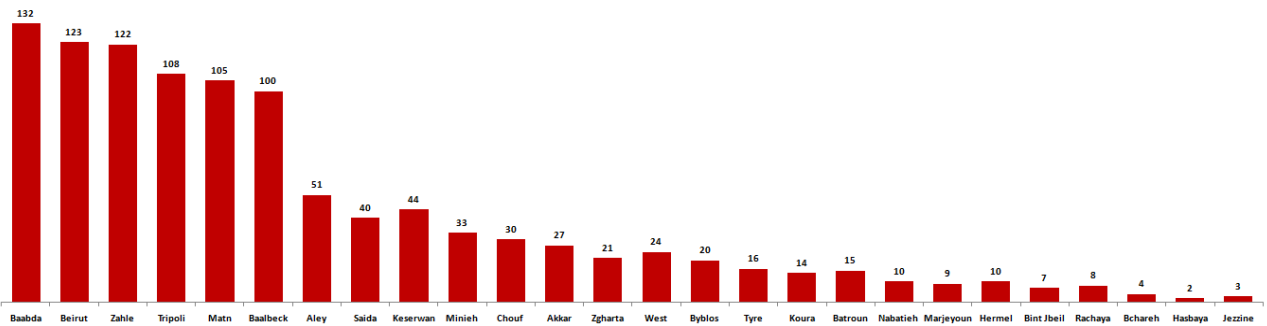
Hospital	Residence	Gender	Age	Chronic
Jezzine Gov.	Jezzine	Male	61	Yes
Harire Gov.	Baabda	Female	92	Yes
El Nini	Minieh	Male	37	Yes
Saint George	Aley	Male	65	Yes
Saint George	Baabda	Male	87	Yes
Mount Lebanon	Baabda	Male	81	Yes
Rizik	Baabda	Male	85	Yes
AUBMC	Beirut	Male	75	Yes
Mount Lebanon	Aley	Female	96	Yes
Bahman	Baalback	Male	63	Yes
Riyak	Zahle	Female	65	Yes



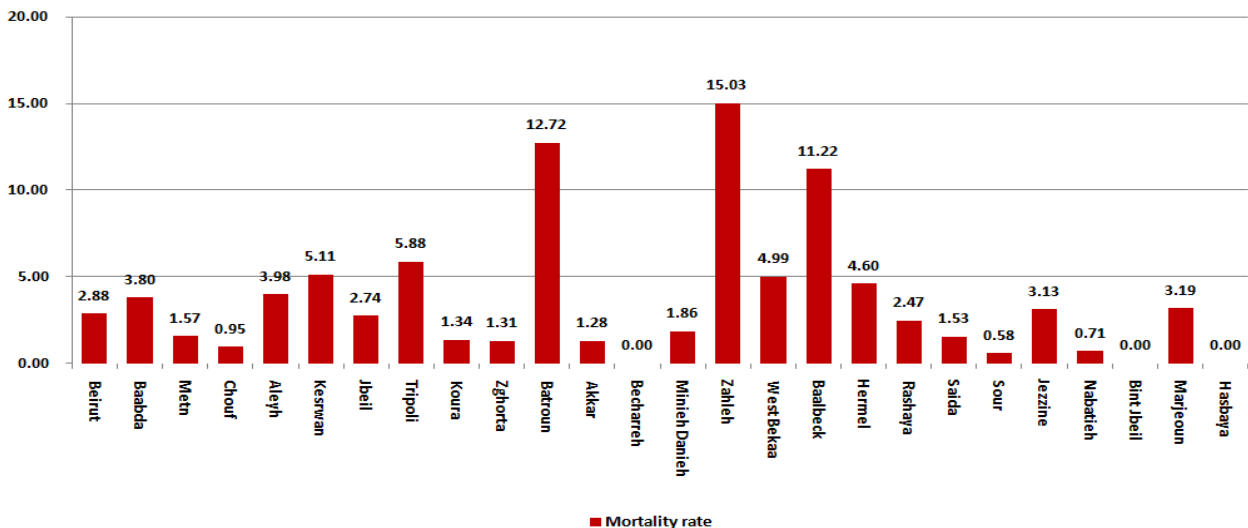
### Distribution of deaths by Age Groups



### Distribution of deaths by Governorates



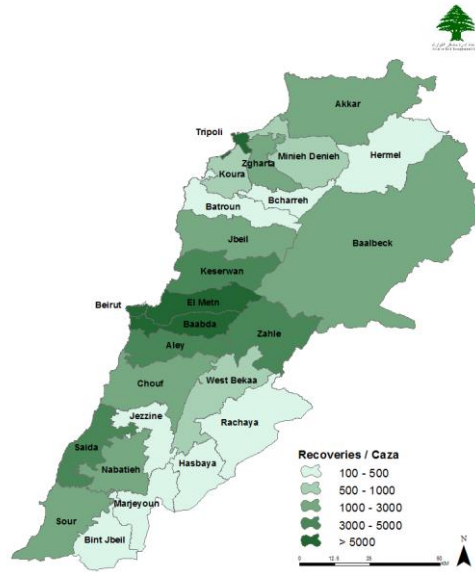
### Distribution of mortality rate for the last 14 days



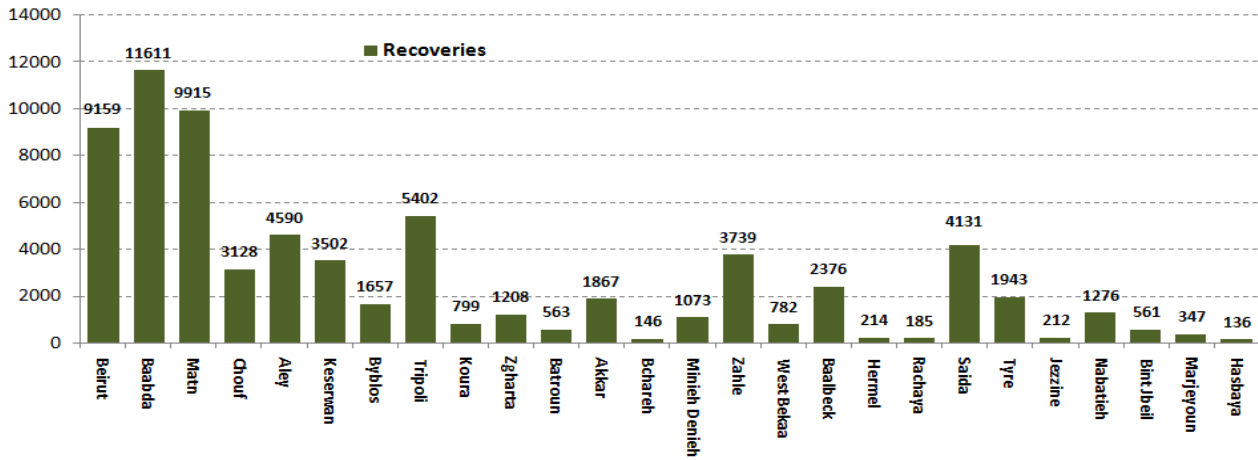
All reports and related decisions can be found at: <http://drm.pvm.gov.lb>

Or social media @DRM\_Lebanon

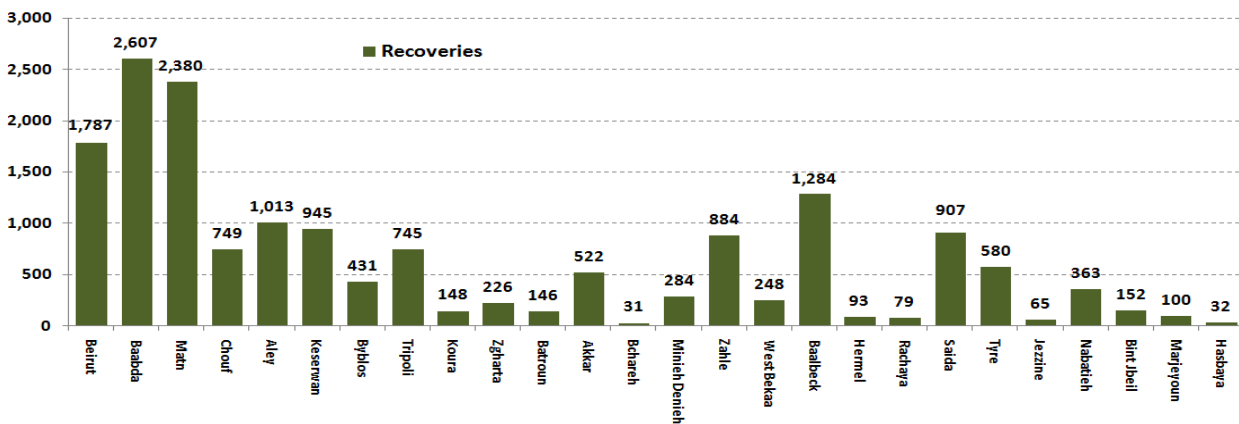
### Distribution of Recoveries



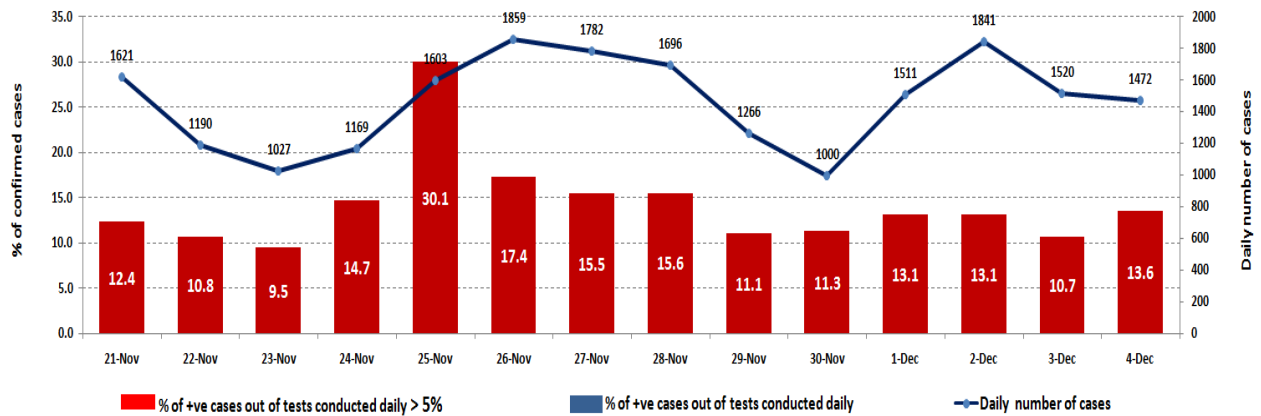
### Distribution of Recoveries per Casa



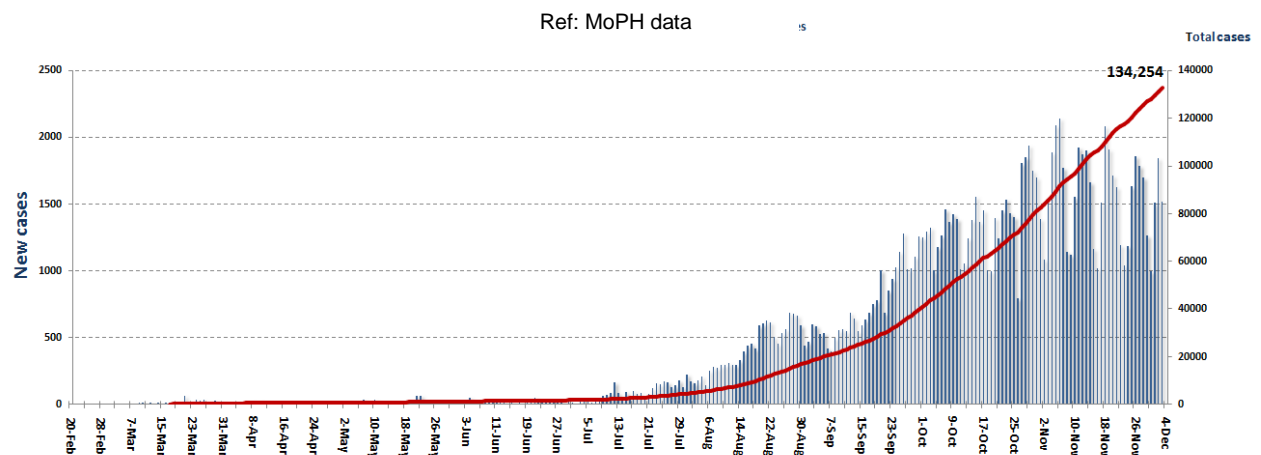
### Distribution of Recoveries per Casa in the last 14 days



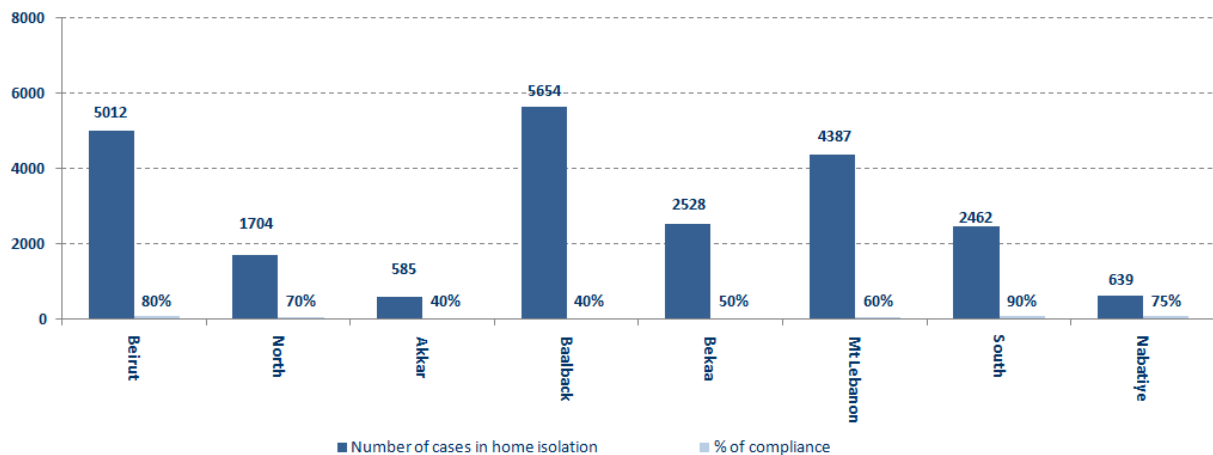
## The percentage of positive cases out of the number of daily tests (20 Nov– 04 Dec,2020)



## Cumulative cases per day



## Number of individuals in home isolation and percentage of commitment to isolation



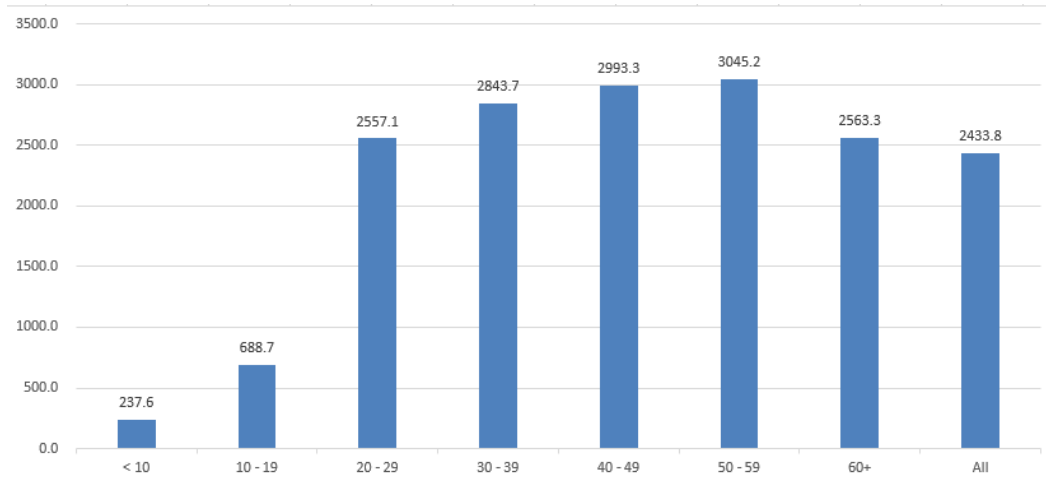
All reports and related decisions can be found at: <http://drm.pvm.gov.lb>

Or social media @DRM\_Lebanon

---

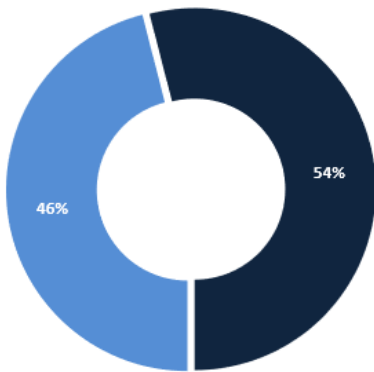
### Age-Specific Cumulative Incidence rate (/100000)

---



---

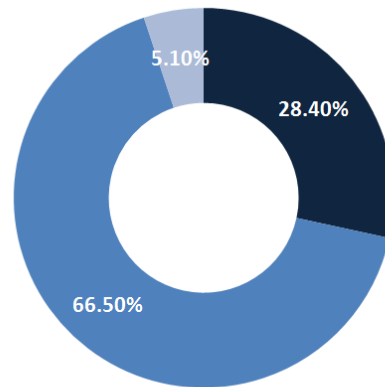
### Distribution of cases by gender



■ Female ■ Male

---

### Distribution of cases by Status

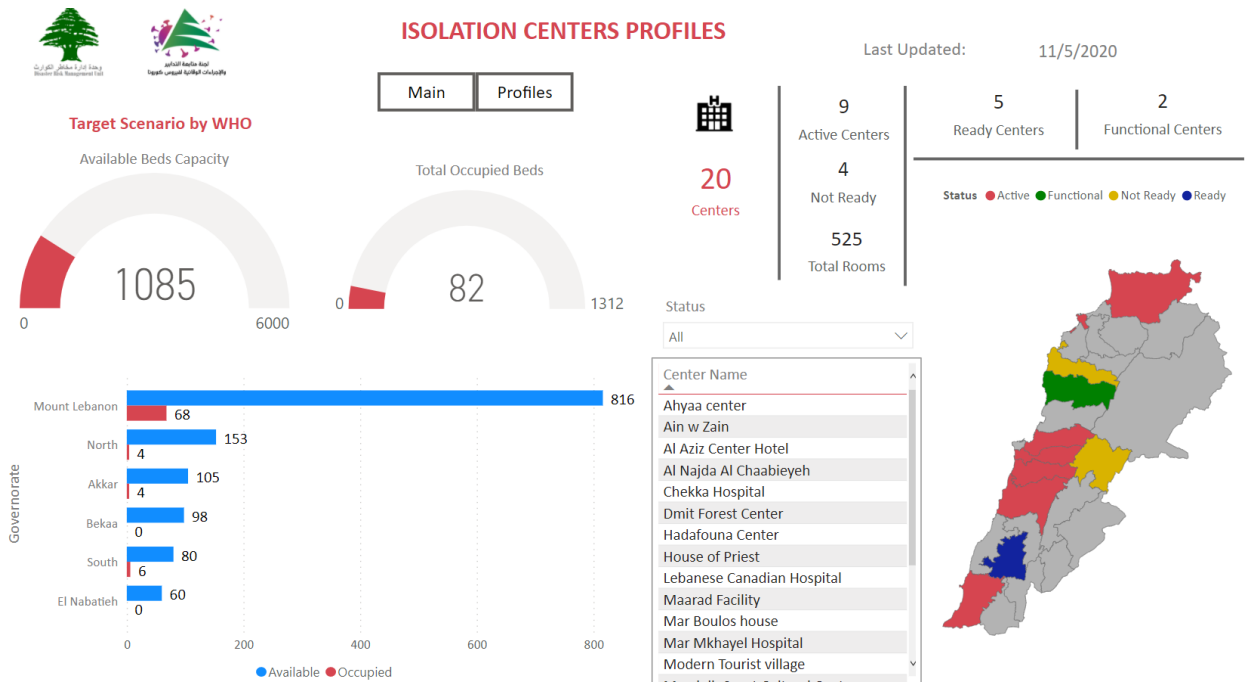


■ Asymptomatic ■ Mild/Moderate ■ Severe/Critical

All reports and related decisions can be found at: <http://drm.pvm.gov.lb>

Or social media @DRM\_Lebanon

## Occupancy rate of isolation centers for cases infected with Coronavirus



Ref: MoPH data

For more information about the isolation centers' distribution and the percentage of their occupancy, enter the following link: <http://bit.ly/DRM-IsolationCentersProfiles>



## Decisions and actions taken – 12/04/2020

### Ministry of Public Health

- With the aim of determining the vaccination strategy that the Ministry will adopt with the approaching issuance of the first vaccine against Covid-19, and since the available quantities will be limited, and Lebanon, like other countries, will give priority to specific groups and since health care workers are on the front lines of the pandemic response, getting them vaccinated is a priority. Accordingly, the Ministry of Public Health issued Book No. 43141 on December 4, 2020 directed to governmental and private hospitals to conduct a study on the factors of acceptance or refusal of hospital care workers to take the Covid-19 vaccine in order to collect complete information to guide the implementation of the strategy and identify the groups benefiting from the vaccine in the first stage.

- The Ministry of Public Health sponsored the opening of a quarantine center in Al-Marija, provided by the United Nations High Commissioner for Refugees and UNICEF, in the presence of the Minister of Public Health and the representative of UNHCR and UNICEF.

### Lebanese Red Cross

Cases transferred to the hospital	9,533 (94 New)	Ambulance centers	48	Number of additional ambulance centers ready to respond	58,911	Number of PCR tests transferred to laboratories	239,571
Number of being benefitting from awareness sessions	112,167 (32 New)	latot number of respondents	8,878	Number of trained paramedics	1,498	Number of volunteers trained to transfer PCR tests	166
Number of trained managers for isolation centers	8,836	CRL latot volunteers for covid 19	550	Number of university volunteers trained to conduct awareness sessions	310	The number of university volunteers trained to follow up on prevention measures in companies and institutions	967
Number of prisons that has been disinfected	979	Total distributed posters, brochures, and flyers on covid19 prevention	1,259,062	Number of distributed equipment	263,699	Number of beneficiaries from educational electronic platforms COVID-19	4,768

### Lebanese Army Forces

- The army units continue to distribute social aid (400,000 Lebanese pounds) to families with limited income in all Lebanese territories.
- Distributing food aid in various Lebanese regions through the CIMIC Office.
- Establishing circumstantial barriers in various regions and supporting the Internal Security Forces in implementing the general closure decision in the country

### General Directorate of Internal Security Forces

- The Internal Security Forces in all governorates and regional directorates organized patrols and circumstantial checkpoints
- The minutes that were written against the violators of the decisions of the general mobilization during the past 24 hours were distributed as follows:

All reports and related decisions can be found at: <http://drm.pvm.gov.lb>

Or social media @DRM\_Lebanon

The number of seizure records during the past 24 hours					The total number of records since 03/08/2020	
Written records of cars that violate curfew decision					2	
Written records of violating institutions					71	Beirut 35,590
Written records of persons violating the decision to wear a mask					188	Mount Leb 40,047
<b>Total</b>					<b>261</b>	Beqaa 16,149
						North 13,341
Beirut	Mount Leb	Beqaa	North	South		South 12,836
135	80	9	22	15		<b>Total 118,063</b>

### General Directorate of State Security

- Reporting new positive cases in various governorates and districts, and cases in home quarantine.
- Follow up the procedures performed by medical teams at the arrivals examination centers at the airport and at border crossings.
- The report of the death of a person from Jezzine, another from Kafr Tabnit, a woman from Dweir, and another person from Deir Kifa due to the Corona virus
- The report of the arrival of a Lebanese corpse to Beirut airport from Kiev, who had died from the Corona virus.

### General Directorate of General Security

- Carrying out patrols in the various governorates to follow up the implementation of the general mobilization decision, as it was found that the commitment to preventive measures varied between one region and another, and the commitment in the Baalbek-Hermel district was almost non-existent, especially in the cafes where hookahs were served.
- Reporting laboratory confirmed injuries in several governorates
- Notification of the percentage of compliance with the general mobilization decision in the governorates, which came as follows within the past 24 hours:

Beirut	South	North	Akkar	Beqaa	Nabatiyeh	Baalbek Hermel	Mount Leb
76%	65%	49%	70%	88%	86%	50%	65%

### Ministry of Public Works and Transportation

#### Beirut RafficHarriri International Airport:

Departing Flights		Arriving Flights	
Number of Flights	55	Number of Flights	46
Number of Departing Individuals	4,287	Number of Arrivals	4,435

#### Ports:

Port	Left			Entered		
	Export	Direction	#	Import	Direction	#
Beirut				Wheat	Ukrain	1
				Cars	Bengazi	1
Tripoli	Trucks	Turkey	1	Gasoline	Beirut	1
Chika				Oil	Beirut	1
Jouneih	Empty	Malta	1			
<b>Total</b>			<b>3</b>			<b>3</b>

## General Decisions / Announcements

The Decision No. 1495 was issued by the Ministry of Interior and Municipalities on 11/29/2020 regarding the amendment of preventive measures and procedures to confront the Corona epidemic, and the most prominent of what was stated in it:

- Determining the times of entry and entry into the streets from 23:00 until 5:00 in the next morning
- The following instructions have been issued regarding transporting vehicles:
  - The Public and private cars: 4 people within the driver
  - Joint transport mechanisms: 50% of the carrying capacity, with the obligation to wear a mask
  - Trucks transporting vegetables, livestock, foodstuffs, milk and its derivatives, agricultural goods and animal feed of all kinds: two people within the driver, ensuring the transport of porters with separate mechanisms, it is mandatory to wear a muzzle
  - Motorcycles (except in Saida): one person on the bike, and motorbike marches are also prohibited
- Determining the opening times of the public sector and the economic and commercial sectors in all Lebanese regions, considering the following:
- Organizing work shifts in the private establishments that can work in accordance with the arrival and exit times
- Adherence to the number of permitted numbers for each sector
- Approving job cards to prove identity
- The decision to open or close educational institutions and administrative units in all towns and villages rests exclusively with the Minister of Education and Higher Education
- Bars, cabarets and night discos remain closed and all social events are prohibited, in addition to coordination with the religious authorities in terms of organizing and determining the number of worshipers in places of worship (50% of the carrying capacity) and the mandatory wearing of the muzzle
- General Provisions:
  - Adherence to the number of commuters by the specified public and private transportation
  - Adherence to the prevention and public safety measures
  - It is mandatory to wear the muzzle Personal hygiene, especially hand washing Permanent sterilization and no overcrowding, while maintaining distances between people
  - Organize roles on checkout boxes
- Exceptions:
  - Military personnel, health sector employees, workers in the diplomatic corps, media professionals, port employees, maritime agencies, and the airport, in addition to the Electricity of Lebanon and Kadisha, water establishments and their service providers, mill workers, sweeping companies, collection and transportation of waste
  - Military, civil defense and firefighting vehicles, municipal police, the Lebanese Red Cross, ambulances, and the medical apparatus
  - Mechanisms of the diplomatic corps, the United Nations, the media and the media
  - Cranes and mechanisms for transporting and towing cars
  - Mechanisms designated for people with special needs who are provided with a card from the Ministry of Social Affairs
  - The arrivals and departures and those who take them to and from the airport, provided they possess a copy of the travel ticket
- Mayors are charged with the following:
  - Launching police patrols to monitor the restriction of citizens and official and private institutions regarding the content of the decision
  - Review the lists of positive cases on the IMPACT platform daily and as soon as they are received
- Assigning the General Directorate of Internal Security Forces to instruct all units to strictly implement this decision
- In the event of an emergency that needs to be transported, it is necessary to call the emergency line 112
- This decision will come into effect from 5:00 am on Monday, 11/30/2020 until Monday morning, 12/7/2020.
- Note: The full decision can be found at: <http://drm.pcm.gov.lb>

All reports and related decisions can be found at: <http://drm.pvm.gov.lb>

Or social media @DRM\_Lebanon

## Examples of lack of adherence to safety measures

- Violations of the Ministry of Interior Decision No. 1432: promenade on the sea corniche, violations of authorized and single motor vehicle traffic, and violations of commercial establishments and stores that did not adhere to the decision.
- Failure to comply with the preventive measures and procedures required in a number of stores and markets (putting on a mask or face mask, sterilizing hands, maintaining a safe distance).
- Failure of those in contact with confirmed cases to adhere to home isolation procedures until the results of the laboratory tests are issued.

**If you feel any symptoms, directly call the hotline of the Ministry of Public Health: 1214 or 01/594459**

**Laboratories that did not comply with the procedures approved by the MoPH About the information required to be recorded for infected cases within the past 24 hours**

<b>Laboratories that did not specify the Governorate</b>	
<b>Laboratory/Hospitals</b>	<b>Cases</b>
BDL003-Laboratoire Inovie / Fayyadieh	30
BDH505-Rafic Hariri University hospital	11
BRH602-Military Hospital / Adlieh	6
BRL009 - Fontana Laboratories	2
BDH558-Hospital Saint Georges Hadath	1
KWL001 - Wakim Laboratories	1
MTH548-Hospital Serhal / Rabieh	1

<b>Number of positive cases without specifying the place of residence</b>	
<b>Laboratory/Hospitals</b>	<b>Cases</b>
BDL003-Laboratoire Inovie / Fayyadieh	35
BDH505-Rafic Hariri University hospital	11
BRH602-Military Hospital / Adlieh	8
BDH562-Hospital Mont liban	6
BRL009 - Fontana Laboratories	5
HRH203-Hospital Hermel Gouvernemental	5
SRL001 - Mashrek Medical Diagnostic Center	3
CHH511-Hospital Ain wa Zain	2
KWL001 - Wakim Laboratories	2
BDH558-Hospital Saint Georges Hadath	1
BDL006 - Beirut International Airport	1
BRH639-Hospital Saint Georges Orthodoxe	1
MTH548-Hospital Serhal / Rabieh	1
NBH301-Hospital Nabatieh Nabih Berry	1
ZHH202-Hospital Elias Hraoui	1

<b>Number of positive cases without a phone number</b>	
<b>Laboratory/Hospitals</b>	<b>Cases</b>
BLH215-Hospital Dar Amal / Baalbeck	2
BDH505-Rafic Hariri University hospital	1
BDL002-Hadi Laboratory/ Haret Hreik	1
HRH203-Hospital Hermel Gouvernemental	1

## A list of the laboratories accredited by the MoPH to conduct PCR tests

### Governmental Labs

المختبر	الموقع
RHUH	بيروت مستشفى رفيق الحريري الجامعي
Halba Governmental	حلبا مستشفى حلبا الحكومي
Tripoli Governmental	طرابلس مستشفى طرابلس الحكومي
Batroun Governmental	البترون مستشفى البترون الحكومي
Fetouh Keserwan	كسروان مستشفى فتوح كسروان الحكومي (البوار)
Nabih Berri Hosp	النبطية مستشفى نبيه بزي الحكومي الجامعي
Tebnine Governmental	تبنين مستشفى تبنين الحكومي
BintJbeil Governmental	بنت جبيل مستشفى بنت جبيل الحكومي
Baalback Governmental	بعليك مستشفى بعليك الحكومي
Elias Herrawi Governmental	زحلة مستشفى الرئيس الياض الهراوي الحكومي

### Private Labs

المختبر	الموقع
AUBMC	بيروت مستشفى الجامعة الأميركية
Hôtel Dieu de France	بيروت مستشفى أوتيل ديو الجامعي
Laboratoires Rodolphe Mérieux (Université Saint-Joseph)	بيروت مختبرات رودولف ميريو (الجامعة اليسوعية – المتحف)
George-Saint UMC Hospital	بيروت مستشفى القديس جاورجيوس الجامعي
General Makassed Hospital	بيروت مستشفى المقاصد
LAU Medical Center - Rizk Hospital	بيروت مستشفى رزق الجامعي
CHU - Geitawi Libanais Hospital	بيروت مستشفى اللبناني الجعيتاوي الجامعي
Hôpital Notre-Dame du Rosaire	بيروت مستشفى الوردية
Doctors' Center	بيروت مختبر مركز الأطباء
Fontana Laboratories	بيروت مختبر فونتانا (الحمرا)
General Security Laboratories	بيروت مختبر الأمن العام (العدلية)
Ghorra-Jabre Laboratories	الأشرفية مختبرات جبر وعزة
Saint Marc Medical & Diagnostic Center	الأشرفية مختبر السانمارك
Laboratories HML	فرن الشباك مختبرات حداد
Laboratoire Moderne (Modern Lab.- Berjaoui)	الغبيري المختبرات الحديثة
Sahel General Hospital (SGH)	الغبيري مستشفى الساحل
Al Zahraa Hospital	الغبيري مستشفى الزهراء الجامعي
	بئر حسن مركز النقاء الطبي
Al Rassoul Al Aazam Hospital	برج البراجنة مستشفى الرسول الأعظم
Bahman Hospital	حارة حريك مستشفى بهمن
National Diagnostic Services Company (NDSC)	حارة حريك مختبر ناشيونال دياغنوستك سيرفس كومباني
Center Diagnostic Medical	المرجعة مختبر الدكتور محمود عثمان - مركز التحاليل الطبية
ADC (Center Diagnostic American)	الجناح مختبر أميركن دياغنوستك سنتر
Mount Lebanon Hospital	بعيدا مستشفى جبل لبنان
Hadath – George-Saint Hôpital	بعيدا مستشفى السان جورج الحدث
Laboratory Al Hadi	بعيدا مختبر الهادي
INOVIE	بعيدا مختبر-Liban
Sacré - Coeur Hôpital	الحازمية مستشفى قلب يسوع
Clinigene	الحازمية مختبر كلينيجان
Dr. Samir Serhal Hospital	المتن مستشفى سرحال
Life for Trans medical	المتن مختبر ترانسيميديكال فور ليف
	المتن مختبرات سان ميشال للتحاليل الطبية
	المتن مختبر مركز الشرق الأوسط الصحي ش.م.ل

All reports and related decisions can be found at: <http://drm.pvm.gov.lb>

Or social media @DRM\_Lebanon

Haroun Hospital	مستشفى هارون	الزلفا
Bellevue Medical Center (BMC)	مستشفى بلفو	المنصورية
Haykal Albert Hôpital	مستشفى هيكل	الكرة
Centre Hospitalier du Nord (CHN)	مركز الشمال الاستشفائي	زغرتا
Mazloum Hospital	مستشفى المظلوم	طرابلس
Al Mounla Hospital	مستشفى المنلا	طرابلس
Nini Hospital	مستشفى النيني	طرابلس
LMSE	مختبر ميكروبيولوجيا الصحة والبيئة، المعهد العالي للدكتوراه، الجامعة اللبنانية	طرابلس
Secours des Dame-Notre – CHU	مستشفى سيدة المعونات الجامعي	جبيل
Boulos & Akiki Lab	مختبر عقيلي وبولس	جبيل
Wakim Centre Médical	مختبر واكيم	جونية
Hospital Wzein Ain	مستشفى عين وزين	الشوف
UMC Hospital Hammoud	مستشفى حمود الجامعي	صيدا
Al Karim Medical Laboratory (KML)	مختبر الكريم	صيدا
Hospital HarbRagheb Sheikh	مستشفى الشيخ راغب حرب	النبطية
SDC (Center Diagnostic Sabbah)	مختبر الصلح	النبطية
Jabal Amel Hospital	مستشفى جبل عامل	صور
Mashrek Diagnostic Center (MDC)	مختبر المشرق	صور
Hospital University Dar Al Amal	مستشفى دار الأمل الجامعي	بعلبك
	مختبرات العناية الطبية	بعلبك
	مختبرات العناية الطبية	اللبوة
Hospital General Khoury	مستشفى خوري	زحلة
MCC (Center Care Medical)	مختبر ميدكال كير سنتر	زحلة

#### مختبرات المستشفيات العسكرية

Hôpital Central Militaire	المستشفى العسكري المركزي في بيروت	بيروت
---------------------------	-----------------------------------	-------

#### المختبرات المؤهلة لأخذ عينات "المسحات الأنفية" بطريقة Drive-Thru

Medical Diagnostic Treatment Center (MDTC)	مختبر ميدكال دياغنوسيك تريمانت سنتر (الحمراء)	بيروت
ALS CIC SAL Med-Lab	مختبر ميد لاب الحمراء – الجفینور	بيروت
Ifani Medical Laboratories	مختبرات عيتاني	بيروت
ABC Laboratories	مختبر أ ب سي	الأشرفية
Mouawad Medical Laboratory	مختبرات معوض الطبية	الشياح
Rihan Medical Center	مختبرات الشياح (د. فؤاد ریحان)	الشياح
Lab Expert	مختبر إكسبرت لاب	المنصورية
LAB Life	مختبر لايف لاب	بعلبك
Rayyak Hospital	مستشفى رياق	رياق