



## Lebanon National Operations Room Daily Report on COVID-19

Friday, December 03, 2020

Report #260

Time Published: 10:30 PM

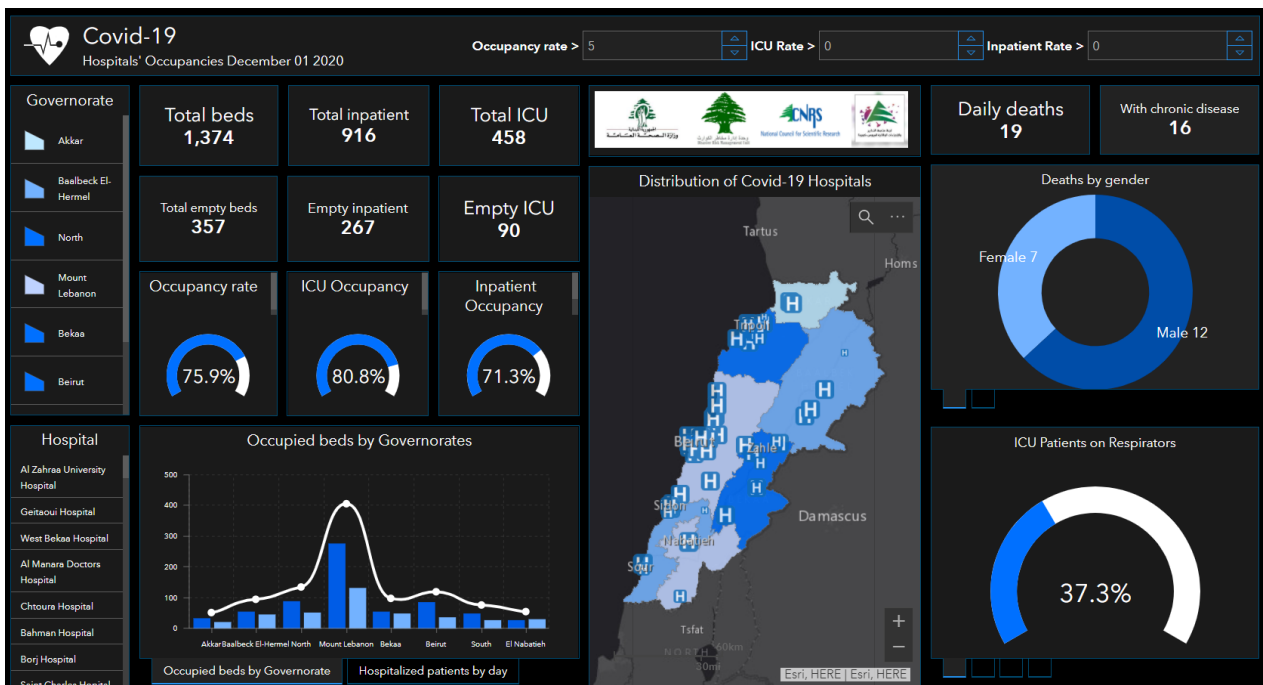
**New in the report:**

The online platform for distributing beds of Coronavirus and the percentage of hospital occupancy.

<b>1,520</b> New Cases		<b>132,776</b> Total Cases since 21.2.2020		<b>1,067</b> Total Deaths		<b>84,142</b> Total Recovered	
<b>1,500</b> Residents	<b>20</b> Expats	<b>129,913</b> Residents	<b>2,863</b> Expats	<b>12</b> New Deaths		<b>2,558</b> New Recovered	
<b>145</b> Deleted Status due to its recurrence	<b>1,770</b> Total Cases in the Health Sector		<b>47,567</b> Total Active Cases		<b>968</b> Hospitalized Cases		
<b>15.7%</b> Positivity rate	<b>8</b> Cases in the Health Sector		<b>46,599</b> Cases in Home Isolation		<b>148</b> Ventilated Cases	<b>9</b> New Cases in ICU	<b>370</b> Total cases in ICU
<b>1,529,600</b> COVID-19 Tests since 21.2.2020		<b>Lebanon Status compared to the World</b>					
<b>1,516</b> COVID-19 Tests at Airport within 24 hrs.		<b>12,676</b> COVID-19 tests for residents within 24 hrs.		<b>Total Cumulative</b>		<b>132,776</b>	
				<b>Total Deaths</b>		<b>1,503,467</b>	
				<b>Deaths percentage</b>		<b>0.80%</b>	
				<b>Total recoveries</b>		<b>84,142</b>	
						<b>65,069,226</b>	
						<b>1,503,467</b>	
						<b>2.31%</b>	
						<b>45,131,782</b>	

Ref: Ministry of Public Health Data

### Occupancy rate of COVID-19 Beds and Availability



For daily information on all the details of the beds distribution availability for Covid-19 patients among all governorates and according to hospitals, kindly check the dashboard link:

Computer : <https://bit.ly/DRM-HospitalsOccupancy-PC>

Phone: <https://bit.ly/DRM-HospitalsOccupancy-Mobile>

All reports and related decisions can be found at: <http://drm.pvm.gov.lb>

Or social media @DRM\_Lebanon

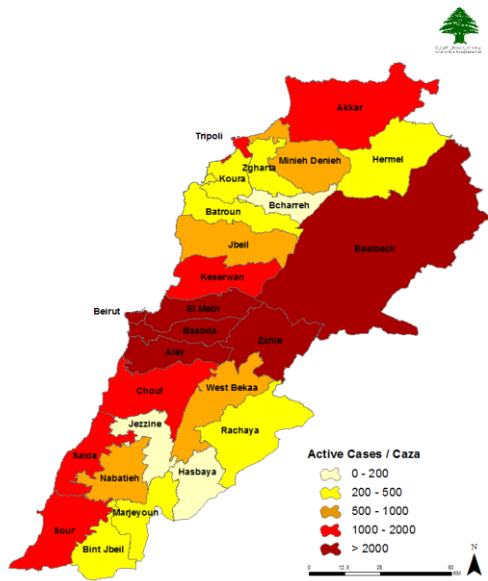
### Distribution of Cases by Villages

Beirut	92	Baabda	199	Maten	139	Chouf	72	Kesserwan	51	Akkar	52
ain mraissseh	2	chiyah	6	borj hammoud	11	damour	1	jounieh	1	halba	6
ras beyrouth	1	jnah	7	nabaa	1	naameh	3	zouk mkayel	1	cheikh mohammad	4
manara	3	ouzaai	7	sinn fil	6	haret en naameh	1	jounieh ghadir	4	zouq el hassineh	1
qreitem	1	bir hassan	2	horch tabet	2	chhim	8	zouk mosbeh	7	zouq el hbalsa	1
hamra	10	mahatet sfair	1	jsr bacha	1	mazboud	1	adonis	1	tikrit	1
ain tineh	1	ghbayreh	7	jdaidet matn	4	daraiya	2	jounieh haret sakhr	2	aayoun	2
msaitbeh	3	ain roummaneh	8	baouchriyeh	2	sibline	2	jounieh sahel aalma	1	aakkar el aatiqa	2
mar elias	3	furn chebbak	2	raouda baouchriyeh	3	barja	3	kfar yassine	1	beit el hajj	1
tallet khayat	1	haret hreik	39	sadd baouchriyeh	3	jadra	1	saфра	6	tall hmaya	1
zarif	4	laylakeh	4	sabtiyeh	4	ouadi ez zayni	1	bouar	1	bebnine	4
mazraa	9	borj brajneeh	28	deir mar roukoz	1	ouardaniyeh	1	aaqaybeh	3	mhammara	1
borj abou haidar	3	mreijeh	7	dekouaneh	10	mghayriyeh	1	aaajaltoun	1	nahr el bared	1
basta faouqa	1	tahoutat ghadir	5	antelias	5	mtolleh	1	ballouneh	1	berqayel	1
malaab baladi	1	baabda	1	jall dib	5	zaarouriyeh	1	shayleh	1	beit ayoub	1
tariq jdiddeh	9	hazmiyeh	8	naqqach	5	deir el qamar	1	daraiya	1	micmich	1
ras nabaa	1	hadath	30	naqqach jdiddeh	1	semqaniyeh	1	jaaita	3	qorneh	1
bachoura	3	kfar chima	3	aamaret chalhoub	1	bchetfine	1	ghazir	1	fnaydeq	3
basta tahta	2	ouadi chahrour	1	zalqa	3	kfar faqoud	2	batha	1	majdala	1
mar mikhayel nahr	1	aabadiyeh	1	byaqout	2	kfar him	4	kfour	1	tacheaa	1
khodr	1	dhour aabadiyeh	1	dbayeh	7	dmit	3	ghidas	1	rahbeh	2
rmeil	4	grayeh	4	mazraat deir aaoukar	1	brih	1	nammoura	3	sindianet el majdel	1
achrafiyeh	15	ras matn	9	mansouriyeh	5	ain zhalta	1	zaaitreh	1	bireh	1
others	13	qobbayaa	1	daychouniyeh	1	baagline	2	rayfoun	1	ain ez zayt	1
<b>Beqaa gharby</b>	<b>35</b>	hammana	1	fanar	4	aathrine	1	qleiaat	2	machta hammoud	1
loussia	5	jouar haouz	4	ain saadeh	2	ouadi bnehlay	1	aachgout	1	haytla	1
mansoura	1	bzebdine	1	ain najm	2	gharifeh	1	faytroun	1	rihaniyeh	1
joubb jannine	1	kfar selouane	9	bsalim	6	jahliyeh	1	blat	1	qbaiyat	2
lala	3	others	2	mtayleb	2	moukhtara	1	bqaatouta	2	aandqet	1
kamed el laouz	1	<b>Hermel</b>	<b>7</b>	rabiyyeh	4	beqaata	3	<b>Jbeil</b>	<b>37</b>	ouadi khaled	1
ghazzeeh	2	hermel	5	elissar	1	niha	1	jbayl	7	others	6
soultan yaqoub	19	daoura	1	raboueh	1	ain ouzain	3	mastita	1	<b>Minch Daneih</b>	<b>22</b>
haouch el harimeh	1	kharayeb	1	beit ech chaar	1	khreibeh	1	blat (jbayl)	4	deir aammar	1
saouiri	2	Rachaya	9	ain aar	3	kahlouniyeh	3	kfar zbouna	1	minieh	8
<b>Baalbek</b>	<b>239</b>	rachaiya el faouqa	1	mazraat yachouaa	1	jeblayeh	1	aamchit	9	bhannine	1
baalbek	47	kfar qouq	2	zakrit	2	mrsti	1	halate	5	bqarsouna	3
ras el ain	3	kfar denis	1	bikfaya	1	batloun	1	fidar	1	kfar chellane	1
douris	32	majdel balhis	1	beit chabab	1	maasser ech chouf	2	hosrayel	1	bakhaaoun	7
iaat	3	yanta	1	ain kharroubeh	2	barouk	7	nahr ibrahim	2	others	1
nahleh	3	others	3	ain aalaq	1	others	1	mchane	1	<b>Zahleh</b>	<b>125</b>
kfar dane	2	<b>Saïda</b>	<b>34</b>	aatchaneh	2	<b>Aleyh</b>	<b>88</b>	saqiet el khayt	1	zahleh	1
nabi rchadeh	1	saïda el qadimeh	4	broummana	3	el aamroussiyyeh	5	meshhlane	1	zahleh haouch	1
fekeheh	3	bramiyeh	1	baabdat	1	hay es sellom	9	hboub	1	zahleh er rassiyyeh	2
ain	1	halilyeh	1	beit meri	1	choueifat el qoubbeh	1	hsarat	1	zahleh el berbara	1
laboueh	2	ain el heloueh	3	monteverdi	1	khaldeh	4	ain kfaa	1	zahleh el maallaqa	3
chaat	3	salhiyeh	1	choueir	1	choueifat el oumara	16	<b>Tripoli</b>	<b>48</b>	zahleh karak nouh	3
younine	5	majdelyoun	1	dhour ech choueir	4	deir goubel	2	trablous ez zeitoun	6	maallaqa aradi	3
yammouneh	1	ghaziyyeh	1	baskinta	1	aaramoun	13	trablous el qoubbeh	6	zahleh haouch	4
bednayel	8	kharayeb	1	others	7	sarhmoul	1	trablous et tabbانه	3	tall chiha	1
qsarnaba	6	zrariyeh	1	Jezzine	4	bchamoun	1	mina n:1	7	zahleh mar elias	1
temnine el faouqa	3	aadloun	1	kfar jarra	2	bdadoun	2	qalamoun	5	fourzol	5
haouch er rafqa	8	ghassaniyeh	2	saydoun	1	aaley	4	beddaoui	3	touayteh	4
temnine et tahta	5	sarafand	6	others	1	kahlaleh	1	madineh ej jdideh	3	hazerta	2
aaqidiyeh	2	aangoun	1	<b>Nabateih</b>	<b>13</b>	qmatiyeh	1	others	15	ablak	4
chmistar	5	others	10	nabatiyeh et tahta	2	qabr chmoun	1	<b>Koura</b>	<b>13</b>	qaa er rim	1
haouch en nabi	1	<b>Tyre</b>	<b>42</b>	kfar roummane	1	binney	1	kfar aaqqa	1	ksara	8
taraya	11	sour	1	choukine	1	aabey	1	dar baaehtar	1	ouadi el aarayech	1
serraine et tahta	2	sour el bass	2	roumine	1	kfar matta	7	kousba	2	chtaura	1
serraine el faouqa	8	sour er rachidiyeh	4	aazzi	1	majdel baana	3	bnehran	1	taalabaya	4
talia	1	borj ech chemali	4	deir ez zahrani	2	saoufar	1	fiaa	1	jdita	4
hizine	2	batoulay	1	jibchit	1	bedghane	1	btouratij	1	saadnayel	7
khodr	4	debaal	1	aadchit ech chqif	1	charoun	2	enfeh	2	qabb elias	8
sifri	1	aaytit	1	qsaibeh	1	ain dara	5	dahr el ain	2	mrayjat	1
nabi chit	14	qana	2	yohmor	2	others	6	others	2	barr elias	14
haour taala	2	maaroub	3	Bnt Jbeil	5	<b>Zgharta</b>	<b>17</b>	<b>Batroun</b>	<b>13</b>	majdel aanjar	1
brital	13	bazouriyeh	1	rmaych	1	zgharta	7	batroun	2	riyaq	9
bouday	4	tayr debba	1	ramiyeh	1	rachaaïne	2	kfar aabida	1	aali en nahr	6
mazraat beit mchaik	1	chehabiyeh	2	chagra	2	harf	2	chikka	5	raait	2
flaoueh	6	arzoun	2	haddatha	1	m'ejdilaïya	1	hamat	1	haret el fikani	1
others	26	deir qanou en nahr	1	Marjaayoun	6	khalidiyeh	1	douma	1	terbol (zahleh)	3
		aabbassiyeh	1	marjaayoun	1	bsebaal	1	deir billa	2	ain kfar zabad	2
		chaaitiyeh	4	dibbine	1	ras kifa	1	others	1	others	17
		jbal el botm	1	khiyam	1	others	2				
		borj rahhal	1	meiss ej jabal	2	<b>Hasbaya</b>	<b>16</b>				
		jibbain	2	others	1	hasbaiya	11				
		mansouri	1			fardis	2				
		others	6			ain qinia	1				
						chebaa	1				

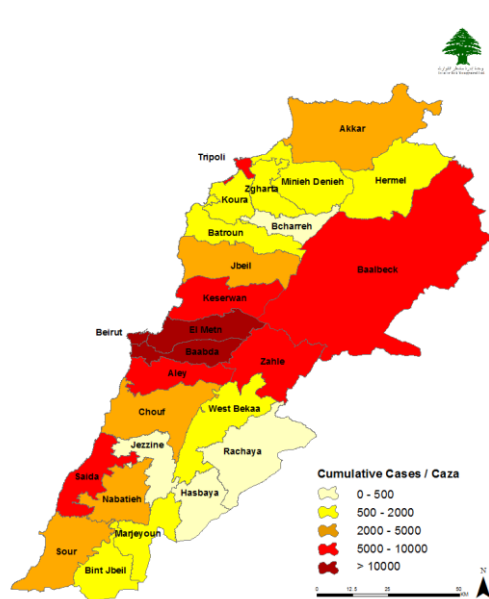
Others 142

## Distribution of Active and Cumulative Cases

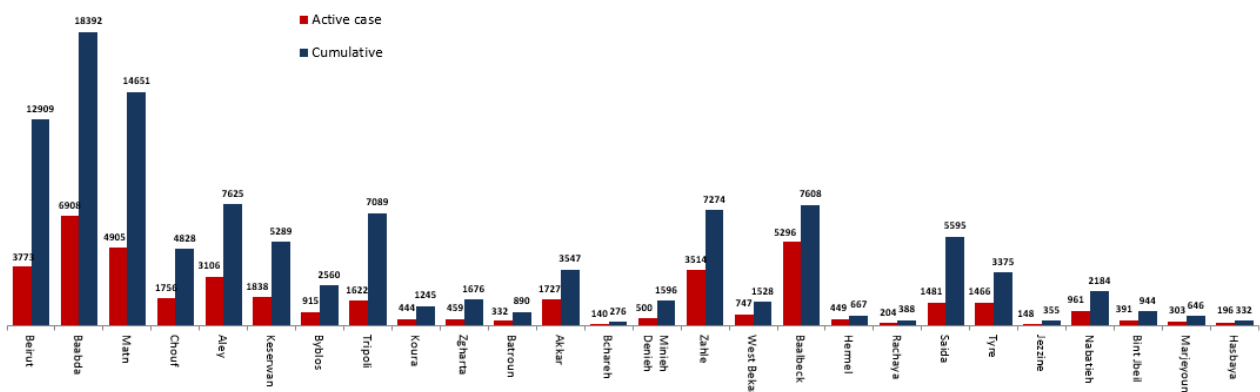
### Distribution of Active Cases



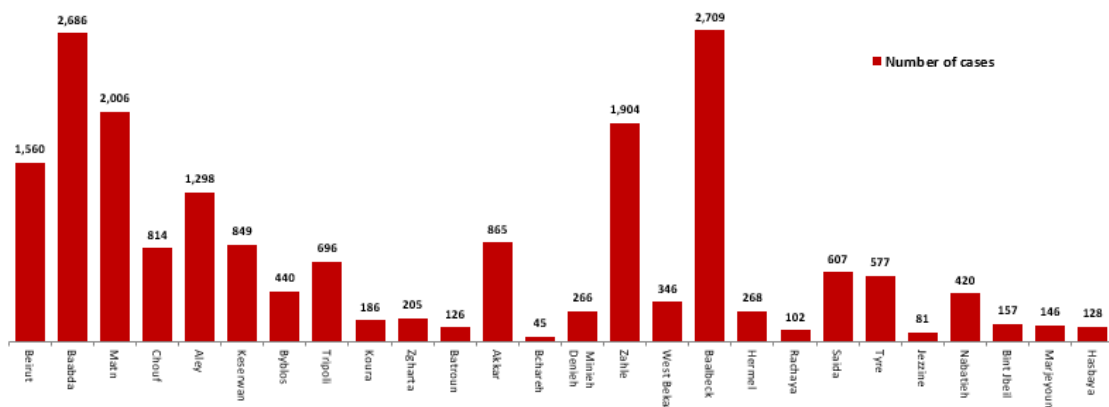
### Distribution of Cumulative Cases



### Number of Cases by Location



### Number of cumulative cases for the last 14 days



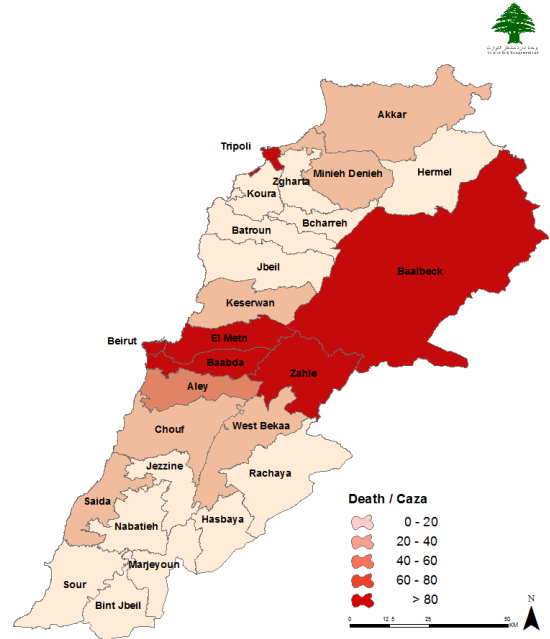
All reports and related decisions can be found at: <http://drm.pvm.gov.lb>

Or social media @DRM\_Lebanon

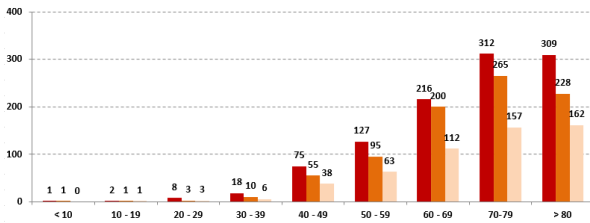
## Distribution of Death Cases

### Distribution of deaths during the past 24 hours

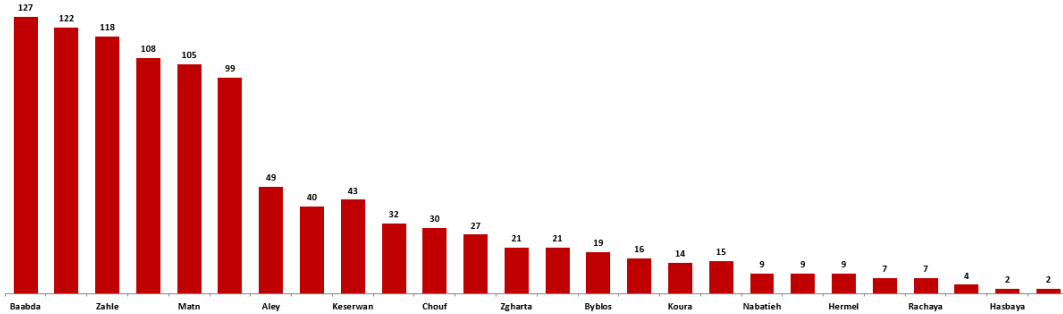
Hospital	Residence	Gender	Age	Chronic
Ftough Kesrwen	Kesrwen	Male	47	No
Maritime Hospital	Jbeil	Male	70	Yes
Home	Rachaya	Male	77	Yes
Hermel Gov	Hermel	Male	49	No
Hermel Gov	Zahleh	Female	84	Yes
Roum Hospital	Beqaa Gharby	Female	76	Yes
Chtoura Hospital	Zahleh	Male	73	Yes
Chtoura Hospital	Zahleh	Male	73	Yes
Beqaa Hospital	Beqaa Gharby	Male	93	Yes
MSF	Beqaa Gharby	Male	57	Yes
Berrih Gov Hosp	Nabateih	Female	58	Yes
Saint George Hadath	Baabda	Male	73	Yes



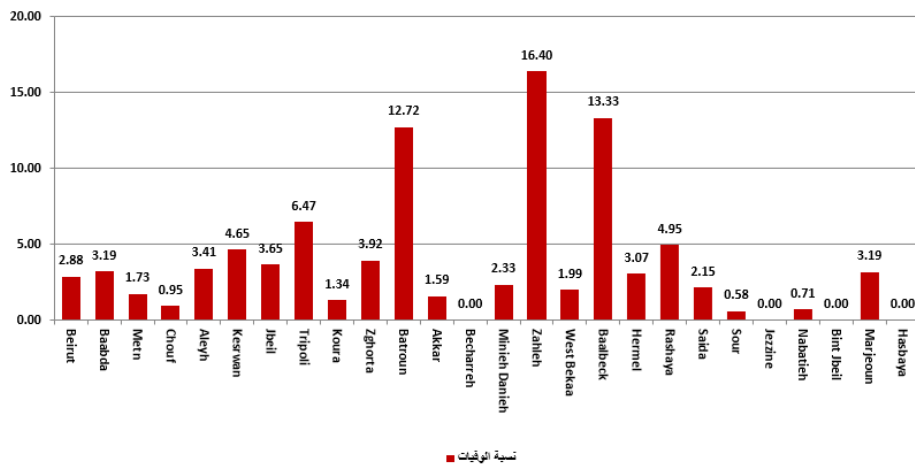
### Distribution of deaths by Age Groups



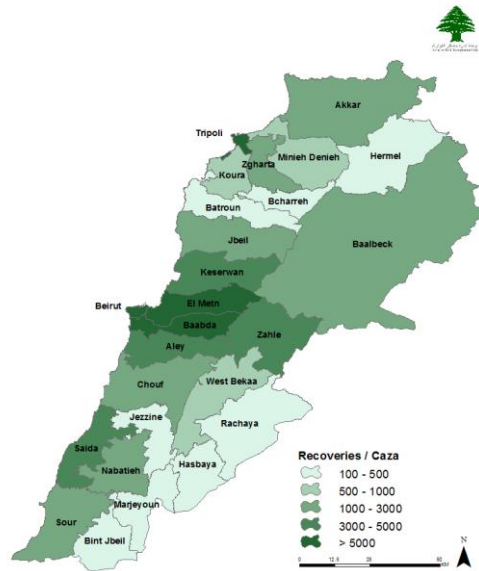
### Distribution of deaths by Governorates



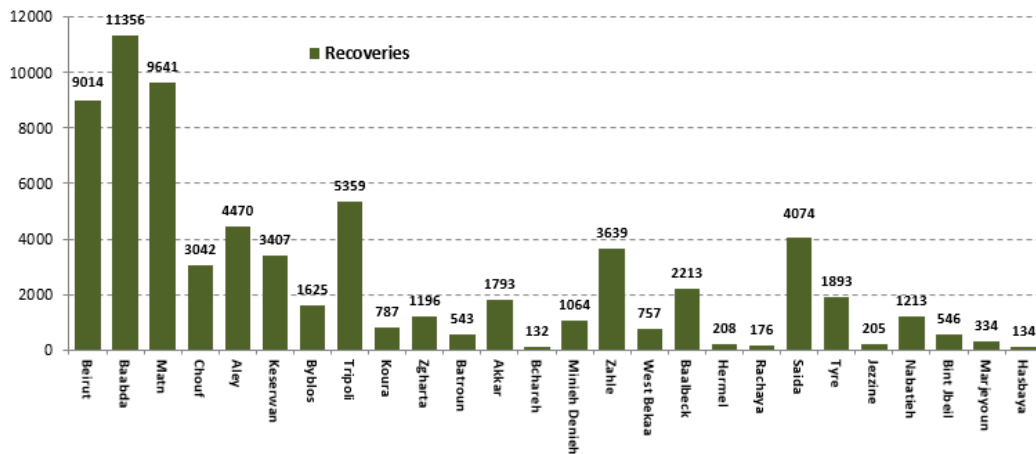
### Distribution of mortality rate for the last 14 days



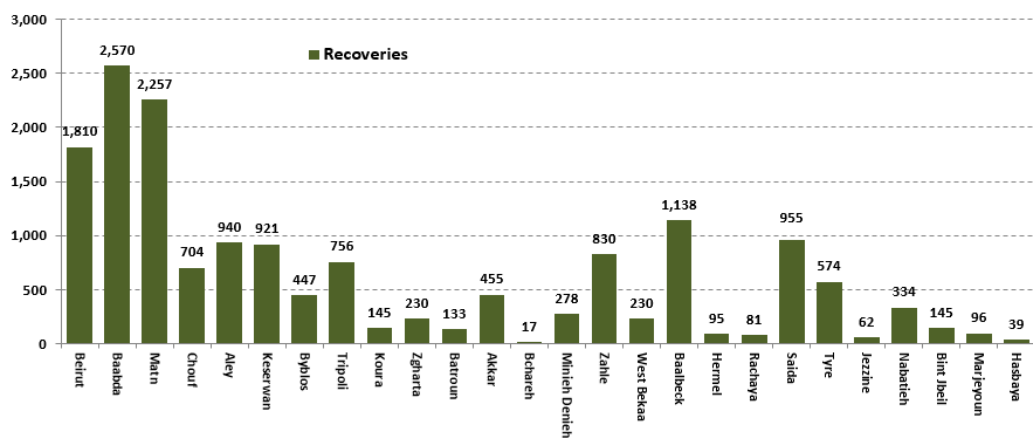
## Distribution of Recoveries



## Distribution of Recoveries per Casa



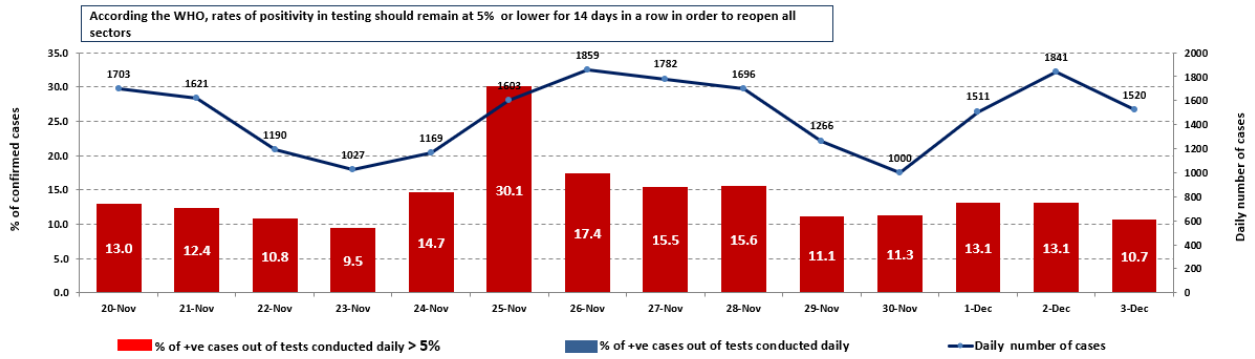
## Distribution of Recoveries per Casa in the last 14 days



All reports and related decisions can be found at: <http://drm.pvm.gov.lb>

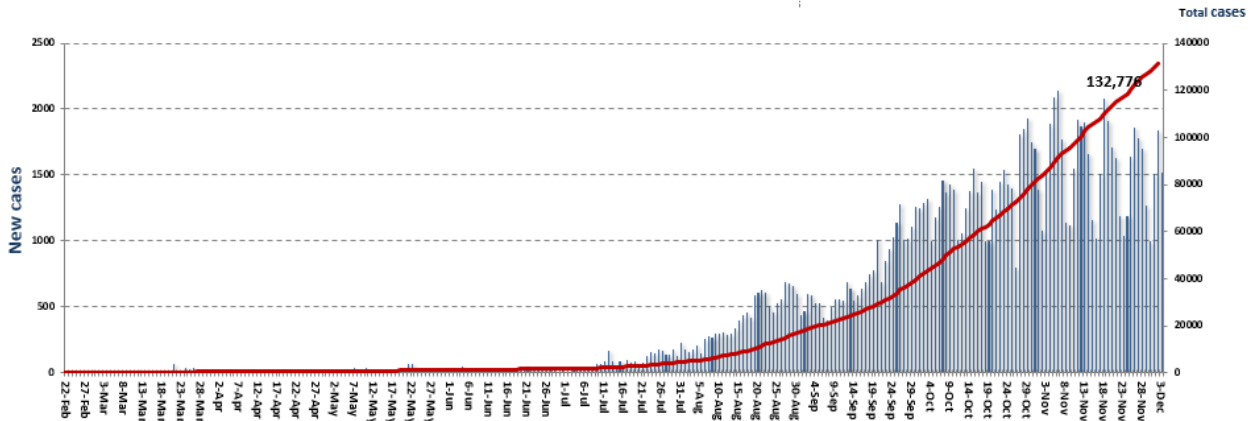
Or social media @DRM\_Lebanon

## The percentage of positive cases out of the number of daily tests (19 Nov– 03 Dec,2020)

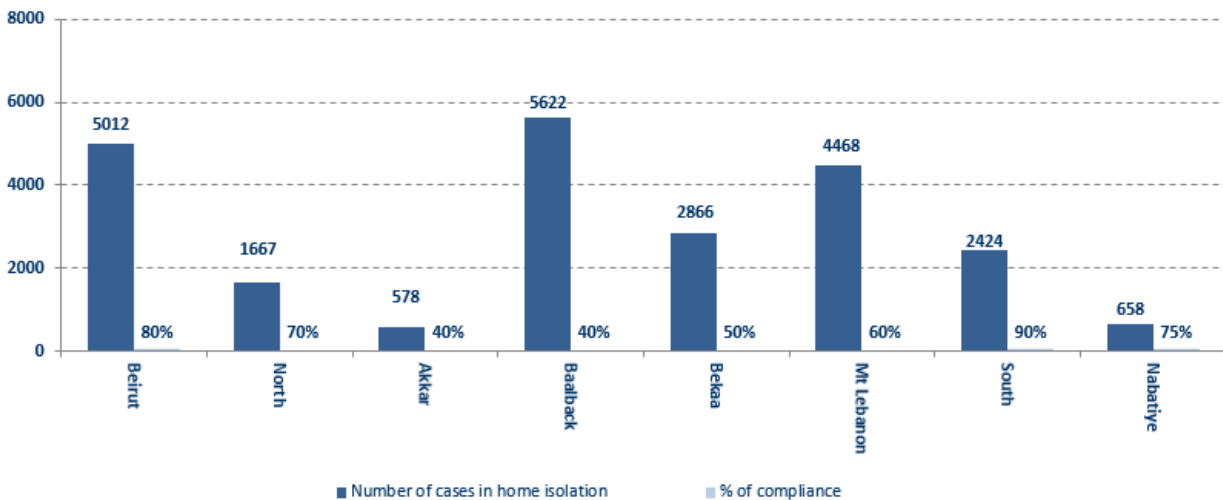


## Cumulative cases per day

Ref: MoPH data



## Number of individuals in home isolation and percentage of commitment to isolation



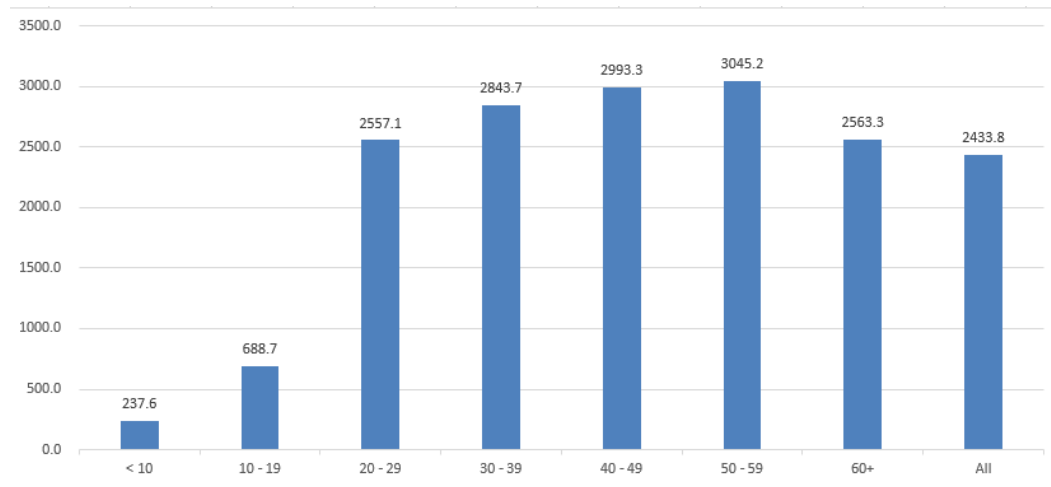
All reports and related decisions can be found at: <http://drm.pvm.gov.lb>

Or social media @DRM\_Lebanon

---

### Age-Specific Cumulative Incidence rate (/100000)

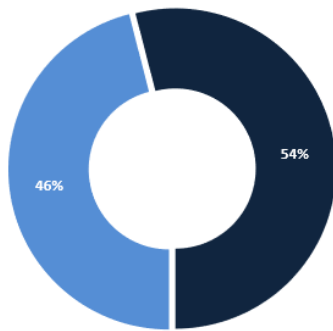
---



---

### Distribution of cases by gender

---

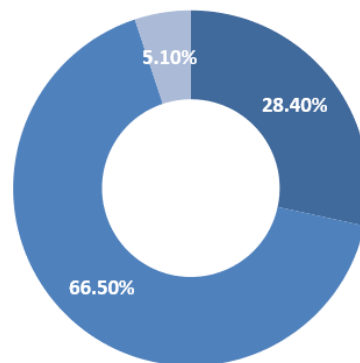


■ Female ■ Male

---

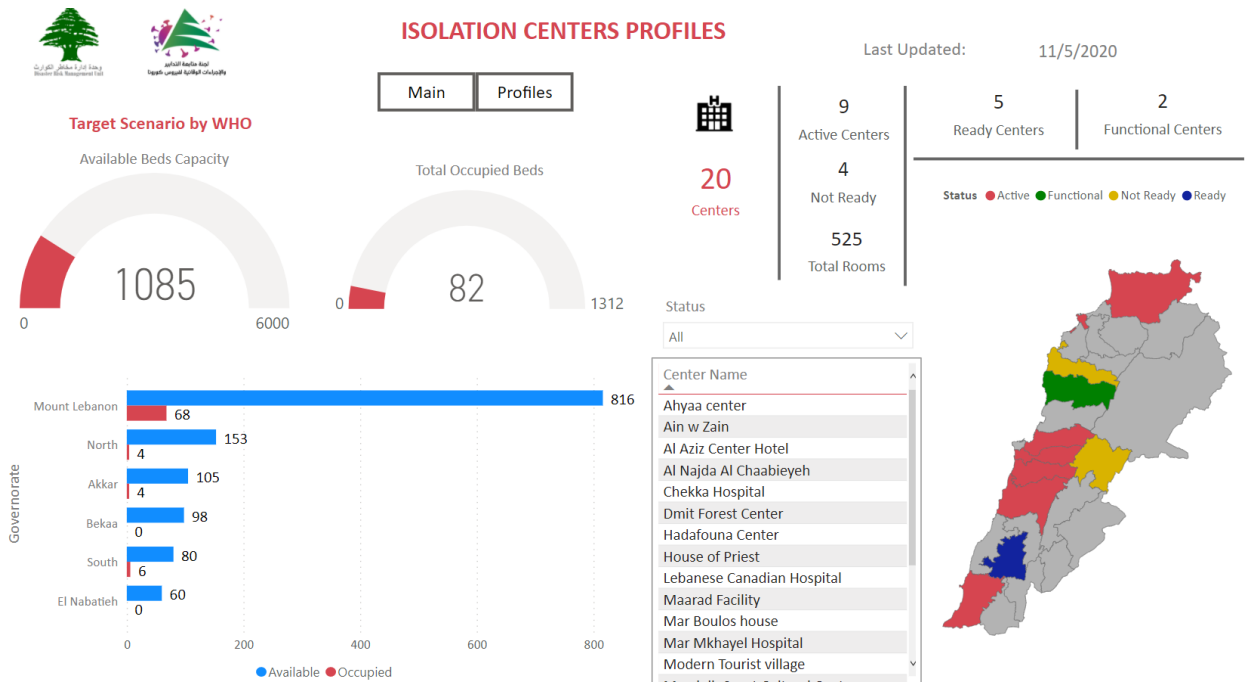
### Distribution of cases by Status

---



■ Asymptomatic ■ Mild/Moderate ■ Severe/Critical

## Occupancy rate of isolation centers for cases infected with Coronavirus



Ref: MoPH data

For more information about the isolation centers' distribution and the percentage of their occupancy, enter the following link: <http://bit.ly/DRM-IsolationCentersProfiles>

## Decisions and actions taken – 12/03/2020

### Ministry of Public Health

- The Ministry of Public Health sponsored the opening of a quarantine center in Al-Marija, provided by the United Nations High Commissioner for Refugees and UNICEF, in the presence of the Minister of Health, the representative of UNHCR and UNICEF.

Date	Company	Country	Flight Number	Number of Cases
<b>Total</b>				<b>N/A</b>

All reports and related decisions can be found at: <http://drm.pvm.gov.lb>

Or social media @DRM\_Lebanon



## Lebanese Red Cross

Cases transferred to the hospital	9,485 (94 New)	Ambulance centers	48	Number of additional ambulance centers ready to respond	58,901	Number of PCR tests transferred to laboratories	239,571
Number of being benefitting from awareness sessions	111,560 (32 New)	total number of respondents	8,878	Number of trained paramedics	1,498	Number of volunteers trained to transfer PCR tests	166
Number of trained managers for isolation centers	8,836	total LRC volunteers for covid 19	550	Number of university volunteers trained to conduct awareness sessions	310	The number of university volunteers trained to follow up on prevention measures in companies and institutions	967
Number of prisons that has been disinfected	979 (10 New)	Total distributed posters, brochures, and flyers on covid19 prevention	1,256,062	Number of distributed equipment	263,346	Number of beneficiaries from educational electronic platforms COVID-19	4,757

## Lebanese Army Forces

- The army units continue to distribute social aid (400,000 Lebanese pounds) to families with limited income in all Lebanese territories.
- Distributing food aid in various Lebanese regions through the CIMIC Office.
- Establishing circumstantial barriers in various regions and supporting the Internal Security Forces in implementing the general closure decision in the country

## General Directorate of Internal Security Forces

- The Internal Security Forces in all governorates and regional directorates organized patrols and circumstantial checkpoints
- The minutes that were written against the violators of the decisions of the general mobilization during the past 24 hours were distributed as follows:

The number of seizure records during the past 24 hours					The total number of records since 03/08/2020		
Written records of cars that violate curfew decision					0	Beirut	35,319
Written records of violating institutions					19	Mount Leb	39,942
Written records of persons violating the decision to wear a mask					155	Beqaa	16,107
<b>Total</b>					<b>174</b>	North	13,272
Beirut	Mount Leb	Beqaa	North	South	South	Total	12,921
67	92	0	0	15			<b>117,561</b>

## General Directorate of State Security

- Reporting new positive cases in various governorates and districts, and cases in home quarantine.
- Follow up the procedures performed by medical teams at the arrivals examination centers at the airport and at border crossings.
- The report of the death of a person from Jezzine, another from Kafr Tabnit, a woman from Dweir, and another person from Deir Kifa due to the Corona virus
- The report of the arrival of a Lebanese corpse to Beirut airport from Kiev, who had died from the Corona virus.

All reports and related decisions can be found at: <http://drm.pvm.gov.lb>

Or social media @DRM\_Lebanon

## General Directorate of General Security

- Carrying out patrols in the various governorates to follow up the implementation of the general mobilization decision, as it was found that the commitment to preventive measures varied between one region and another, and the commitment in the Baalbek-Hermel district was almost non-existent, especially in the cafes where hookahs were served.
- Reporting laboratory confirmed injuries in several governorates
- Notification of the percentage of compliance with the general mobilization decision in the governorates, which came as follows within the past 24 hours:

Beirut	South	North	Akkar	Beqaa	Nabatiyeh	Baalbek Hermel	Mount Leb
60%	60%	50%	60%	60%	60%	50%	50%

## Ministry of Public Works and Transportation

### Beirut Raffic Harriri International Airport:

Departing Flights		Arriving Flights	
Number of Flights	35	Number of Flights	40
Number of Departing Individuals	2,755	Number of Arrivals	3,811

### Ports:

Port	Left			Entered		
	Export	Direction	#	Import	Direction	#
<b>Beirut</b>	Wheat	Mariupol	1			
	Containers	Tripoli	1			
<b>Tripoli</b>				Containers	Turkey	1
<b>Zahrani</b>				Blank	Turkey	1
<b>Jouneih</b>				Fuel Oil	Jeyeh	1
<b>Jeyyeh</b>	Fuel Oil	Turkey	1			
<b>Total</b>			<b>3</b>			<b>3</b>

## General Decisions / Announcements

The Decision No. 1495 was issued by the Ministry of Interior and Municipalities on 11/29/2020 regarding the amendment of preventive measures and procedures to confront the Corona epidemic, and the most prominent of what was stated in it:

- Determining the times of entry and entry into the streets from 23:00 until 5:00 in the next morning
- The following instructions have been issued regarding transporting vehicles:
  - The Public and private cars: 4 people within the driver
  - Joint transport mechanisms: 50% of the carrying capacity, with the obligation to wear a mask
  - Trucks transporting vegetables, livestock, foodstuffs, milk and its derivatives, agricultural goods and animal feed of all kinds: two people within the driver, ensuring the transport of porters with separate mechanisms, it is mandatory to wear a muzzle
  - Motorcycles (except in Saida): one person on the bike, and motorbike marches are also prohibited
- Determining the opening times of the public sector and the economic and commercial sectors in all Lebanese regions, considering the following:
- Organizing work shifts in the private establishments that can work in accordance with the arrival and exit times
- Adherence to the number of permitted numbers for each sector
- Approving job cards to prove identity
- The decision to open or close educational institutions and administrative units in all towns and villages rests exclusively with the Minister of Education and Higher Education
- Bars, cabarets and night discos remain closed and all social events are prohibited, in addition to coordination with the religious authorities in terms of organizing and determining the number of worshipers in places of worship (50% of the carrying capacity) and the mandatory wearing of the muzzle
- General Provisions:
  - Adherence to the number of commuters by the specified public and private transportation
  - Adherence to the prevention and public safety measures
  - It is mandatory to wear the muzzle Personal hygiene, especially hand washing Permanent sterilization and no overcrowding, while maintaining distances between people
  - Organize roles on checkout boxes
- Exceptions:
  - Military personnel, health sector employees, workers in the diplomatic corps, media professionals, port employees, maritime agencies, and the airport, in addition to the Electricity of Lebanon and Kadisha, water establishments and their service providers, mill workers, sweeping companies, collection and transportation of waste
  - Military, civil defense and firefighting vehicles, municipal police, the Lebanese Red Cross, ambulances, and the medical apparatus
  - Mechanisms of the diplomatic corps, the United Nations, the media and the media
  - Cranes and mechanisms for transporting and towing cars
  - Mechanisms designated for people with special needs who are provided with a card from the Ministry of Social Affairs
  - The arrivals and departures and those who take them to and from the airport, provided they possess a copy of the travel ticket
- Mayors are charged with the following:
  - Launching police patrols to monitor the restriction of citizens and official and private institutions regarding the content of the decision
  - Review the lists of positive cases on the IMPACT platform daily and as soon as they are received
- Assigning the General Directorate of Internal Security Forces to instruct all units to strictly implement this decision
- In the event of an emergency that needs to be transported, it is necessary to call the emergency line 112
- This decision will come into effect from 5:00 am on Monday, 11/30/2020 until Monday morning, 12/7/2020.
- Note: The full decision can be found at: <http://drm.pcm.gov.lb>

All reports and related decisions can be found at: <http://drm.pvm.gov.lb>

Or social media @DRM\_Lebanon

## Examples of lack of adherence to safety measures

- Violations of the Ministry of Interior Decision No. 1432: promenade on the sea corniche, violations of authorized and single motor vehicle traffic, and violations of commercial establishments and stores that did not adhere to the decision.
- Failure to comply with the preventive measures and procedures required in a number of stores and markets (putting on a mask or face mask, sterilizing hands, maintaining a safe distance).
- Failure of those in contact with confirmed cases to adhere to home isolation procedures until the results of the laboratory tests are issued.

**If you feel any symptoms, directly call the hotline of the Ministry of Public Health: 1214 or 01/594459**

**Laboratories that did not comply with the procedures approved by the MoPH About the information required to be recorded for infected cases within the past 24 hours**

<b>Laboratories that did not specify the Governorate</b>	
<b>Laboratory/Hospitals</b>	<b>Cases</b>
BDL003-Laboratoire Inovie / Fayyadieh	63
BDH505-Rafic Hariri University hospital	13
BRH636-Hospital LAU Medical Center / Rizk	6
BDL002-Hadi Laboratory/ Haret Hreik	3
ZHH231-Hospital Tel Chiha / Zahleh	3
JBH541-Hospital Notre Dame de Secours	2
BRH602-Military Hospital / Adlieh	1
BRH639-Hospital Saint Georges Orthodoxe	1
BRL010 - Jabra Ghorra Laboratory	1
SRL001 - Mashrek Medical Diagnostic Center	1

<b>Number of positive cases without specifying the place of residence</b>	
<b>Laboratory/Hospitals</b>	<b>Cases</b>
BDL003-Laboratoire Inovie / Fayyadieh	65
SRL001 - Mashrek Medical Diagnostic Center	14
BDH505-Rafic Hariri University hospital	13
BRH639-Hospital Saint Georges Orthodoxe	8
BRH636-Hospital LAU Medical Center / Rizk	6
BDL002-Hadi Laboratory/ Haret Hreik	4
CHH511-Hospital Ain wa Zain	4
ZHH231-Hospital Tel Chiha / Zahleh	3
JBH541-Hospital Notre Dame de Secours	2
BDH562-Hospital Mont liban	1
BRH602-Military Hospital / Adlieh	1
BRH610-Hospital American university	1
BRL010 - Jabra Ghorra Laboratory	1
BDL003-Laboratoire Inovie / Fayyadieh	65
SRL001 - Mashrek Medical Diagnostic Center	14
BDH505-Rafic Hariri University hospital	13
BRH639-Hospital Saint Georges Orthodoxe	8

<b>Number of positive cases without a phone number</b>	
<b>Laboratory/Hospitals</b>	<b>Cases</b>
BLH215-Hospital Dar Amal / Baalbeck	4
BDL002-Hadi Laboratory/ Haret Hreik	3
BDH505-Rafic Hariri University hospital	1

## A list of the laboratories accredited by the MoPH to conduct PCR tests

### Governmental Labs

المختبر	الموقع
RHUH	مستشفى رفيق الحريري الجامعي بيروت
Halba Governmental	مستشفى حلبا الحكومي حلبا
Tripoli Governmental	مستشفى طرابلس الحكومي طرابلس
Batroun Governmental	مستشفى البترون الحكومي البترون
Fetouh Keserwan	مستشفى فتوح كسروان الحكومي (البوار) كسروان
Nabih Berri Hosp	مستشفى نبيه بري الحكومي الجامعي النبطية
Tebnine Governmental	مستشفى تبنين الحكومي تبنين
BintJbeil Governmental	مستشفى بنت جبيل الحكومي بنت جبيل
Baalback Governmental	مستشفى بعليك الحكومي بعليك
Elias Herrawi Governmental	مستشفى الرئيس الياس الهراوي الحكومي زحلة

### Private Labs

المختبر	الموقع
AUBMC	مستشفى الجامعة الأميركية بيروت
Hôtel Dieu de France	مستشفى أوتيل ديو الجامعي بيروت
Laboratoires Rodolphe Mérieux (Université Saint-Joseph)	مختبرات رودولف ميريو (الجامعة اليسوعية – المتحف) بيروت
George-Saint UMC Hospital	مستشفى القديس جاورجيوس الجامعي بيروت
General Makassed Hospital	مستشفى المقاصد بيروت
LAU Medical Center - Rizk Hospital	مستشفى رزق الجامعي بيروت
CHU - Geitawi Libanais Hospital	مستشفى اللبناني الجعيتاوي الجامعي بيروت
Hôpital Notre-Dame du Rosaire	مستشفى الوردية بيروت
Doctors' Center	مختبر مركز الأطباء بيروت
Fontana Laboratories	مختبر فونتانا (الحمرا) بيروت
General Security Laboratories	مختبر الأمن العام (العدلية) بيروت
Ghorra-Jabre Laboratories	مختبرات جبر وعزة الأشرفية
Saint Marc Medical & Diagnostic Center	مختبر السانمارك الأشرفية
Laboratories HML	مختبرات حداد فرن الشباك
Laboratoire Moderne (Modern Lab.- Berjaoui)	المختبرات الحديثة الغبيري
Sahel General Hospital (SGH)	مستشفى الساحل الغبيري
Al Zahraa Hospital	مستشفى الزهراء الجامعي الغبيري
	مركز النقاء الطبي بئر حسن
Al Rassoul Al Aazam Hospital	مستشفى الرسول الأعظم برج البراجنة
Bahman Hospital	مستشفى بهمن حارة حريك
National Diagnostic Services Company (NDSC)	مختبر ناشيونال دياغنوستك سيرفس كومباني حارة حريك
Center Diagnostic Medical	مختبر الدكتور محمود عثمان - مركز التحاليل الطبية المرجعة
ADC (Center Diagnostic American)	مختبر أميركن دياغنوستك سنتر الجناح
Mount Lebanon Hospital	مستشفى جبل لبنان بعيدا
Hadath – George-Saint Hôpital	مستشفى السان جورج الحدث بعيدا
Laboratory Al Hadi	مختبر الهادي بعيدا
INOVIE	مختبر-Liban بعيدا
Sacré - Coeur Hôpital	مستشفى قلب يسوع الحازمية
Clinigene	مختبر كلينيجان الحازمية
Dr. Samir Serhal Hospital	مستشفى سرحال المتن
Life for Trans medical	مختبر ترانسيميديكال فور ليف المتن
	مختبرات سان ميشال للتحاليل الطبية المتن
	مختبر مركز الشرق الأوسط الصحي ش.م.ل المتن

All reports and related decisions can be found at: <http://drm.pvm.gov.lb>

Or social media @DRM\_Lebanon

Haroun Hospital	مستشفى هارون	الزلفا
Bellevue Medical Center (BMC)	مستشفى بلفو	المنصورية
Haykal Albert Hôpital	مستشفى هيكل	الكرة
Centre Hospitalier du Nord (CHN)	مركز الشمال الاستشفائي	زغرتا
Mazloum Hospital	مستشفى المظلوم	طرابلس
Al Mounla Hospital	مستشفى المنلا	طرابلس
Nini Hospital	مستشفى النيني	طرابلس
LMSE	مختبر ميكروبيولوجيا الصحة والبيئة، المعهد العالي للدكتوراه، الجامعة اللبنانية	طرابلس
Secours des Dame-Notre – CHU	مستشفى سيدة المعونات الجامعي	جبيل
Boulos & Akiki Lab	مختبر عقيلي وبولس	جبيل
Wakim Centre Médical	مختبر واكيم	جونية
Hospital Wzein Ain	مستشفى عين وزين	الشوف
UMC Hospital Hammoud	مستشفى حمود الجامعي	صيدا
Al Karim Medical Laboratory (KML)	مختبر الكريم	صيدا
Hospital HarbRagheb Sheikh	مستشفى الشيخ راغب حرب	النبطية
SDC (Center Diagnostic Sabbah)	مختبر الصباح	النبطية
Jabal Amel Hospital	مستشفى جبل عامل	صور
Mashrek Diagnostic Center (MDC)	مختبر المشرق	صور
Hospital University Dar Al Amal	مستشفى دار الأمل الجامعي	بعلبك
	مختبرات العناية الطبية	بعلبك
	مختبرات العناية الطبية	اللبوة
Hospital General Khoury	مستشفى خوري	زحلة
MCC (Center Care Medical)	مختبر ميديكال كير سنتر	زحلة

#### مختبرات المستشفيات العسكرية

Hôpital Central Militaire	المستشفى العسكري المركزي في بيروت	بيروت
---------------------------	-----------------------------------	-------

#### المختبرات المؤهلة لأخذ عينات "المسحات الأنفية" بطريقة Drive-Thru

Medical Diagnostic Treatment Center (MDTC)	مختبر ميديكال دياغنوسيك تريمانت سنتر (الحمراء)	بيروت
ALS CIC SAL Med-Lab	مختبر ميد لاب الحمراء – الجفینور	بيروت
Ifani Medical Laboratories	مختبرات عيتاني	بيروت
ABC Laboratories	مختبر أ ب سي	الأشرفية
Mouawad Medical Laboratory	مختبرات معوض الطبية	الشياح
Rihan Medical Center	مختبرات الشياح (د. فؤاد ریحان)	الشياح
Lab Expert	مختبر إكسبرت لاب	المنصورية
LAB Life	مختبر لايف لاب	بعلبك
Rayyak Hospital	مستشفى رياق	رياق