



# Lebanon National Operations Room

## Daily Report on COVID-19

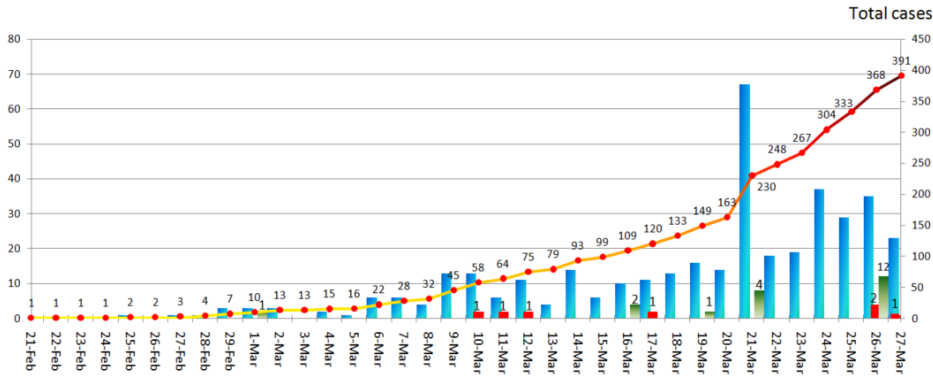
### March 27, 2020

Friday, March 27, 2020

Report #9

Time Published: 18:00

### Cases per day



391

Total number of cases since Feb. 21

23

New cases recorded on March 27

4

Patients in critical condition

7

Total deaths

20

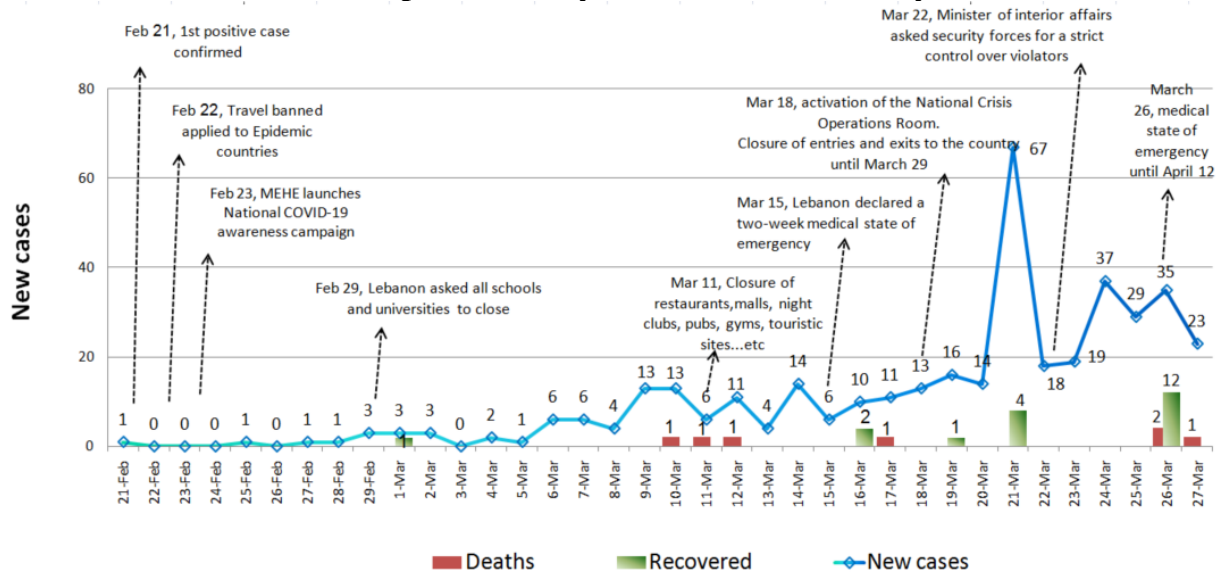
Number of cured patients

5959

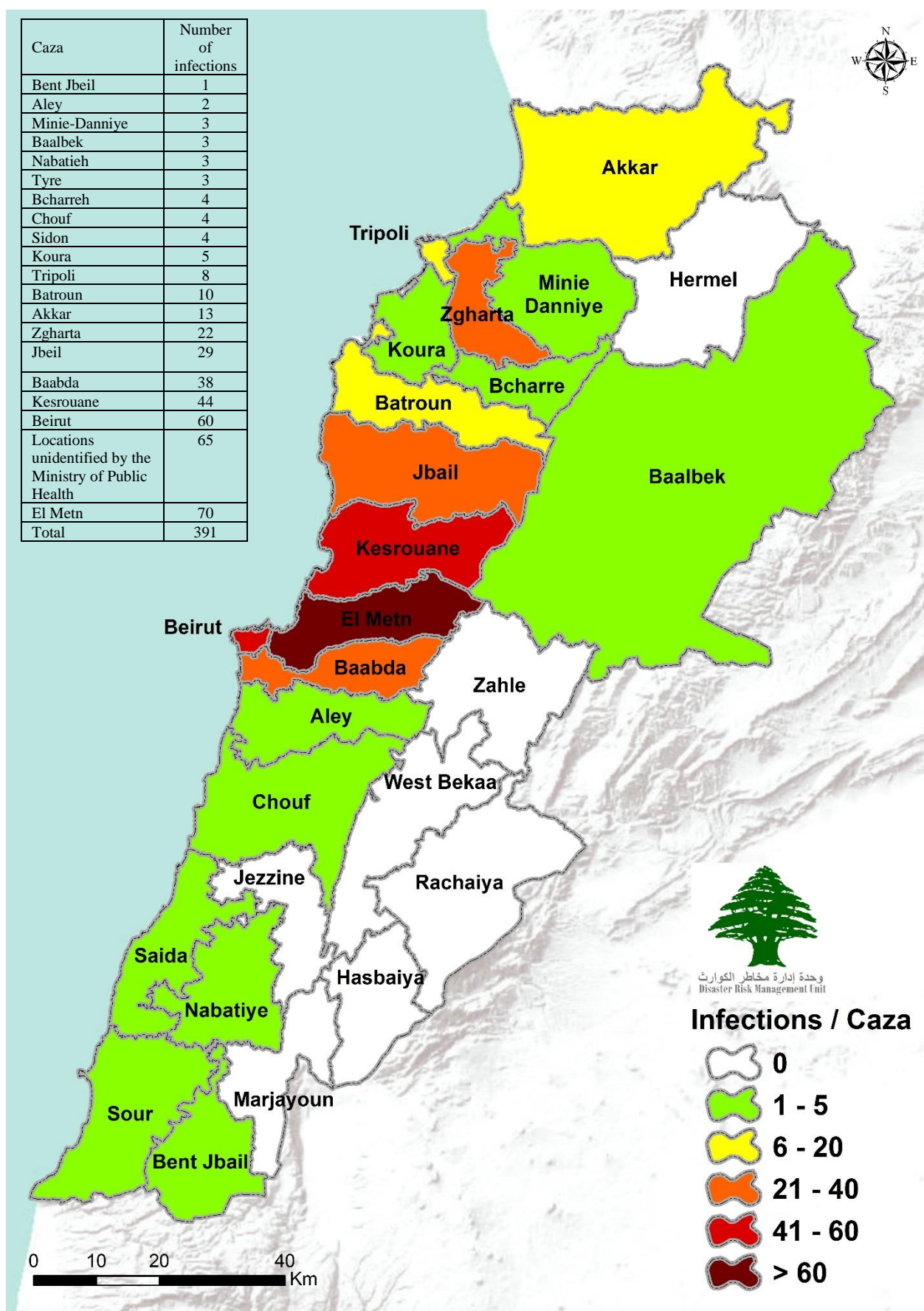
Total Coronavirus tests conducted between Feb. 21 and March 26

*Source: Ministry of Public Health*

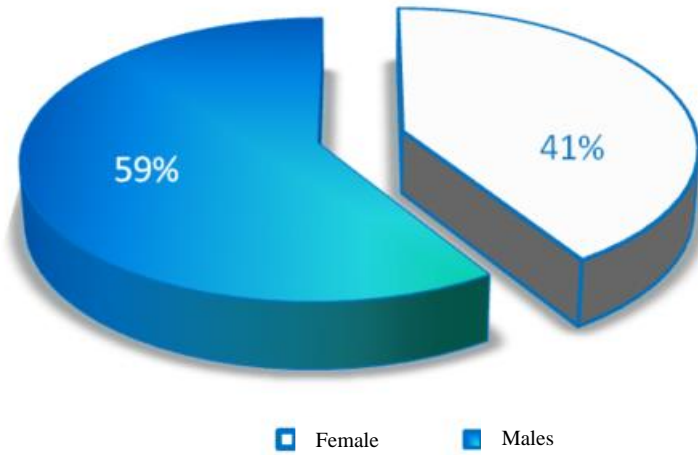
### Trend of cases vis-à-vis precautionary measures introduced by Government



## Number of Cases by Location

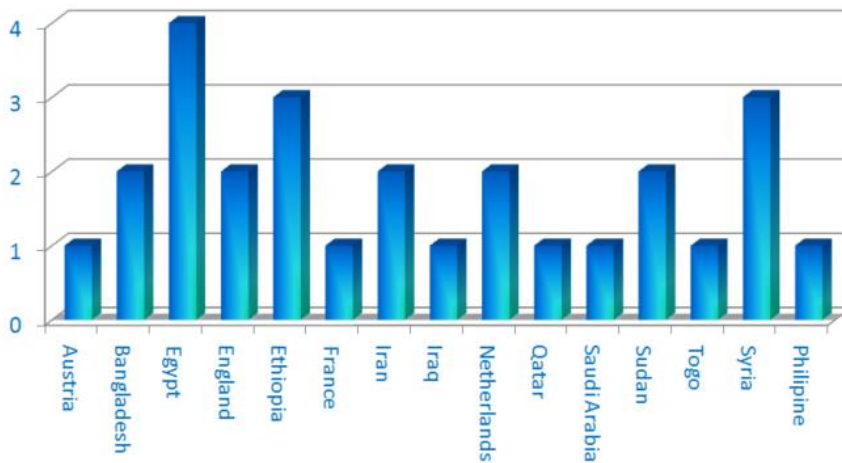


### Cases by Gender

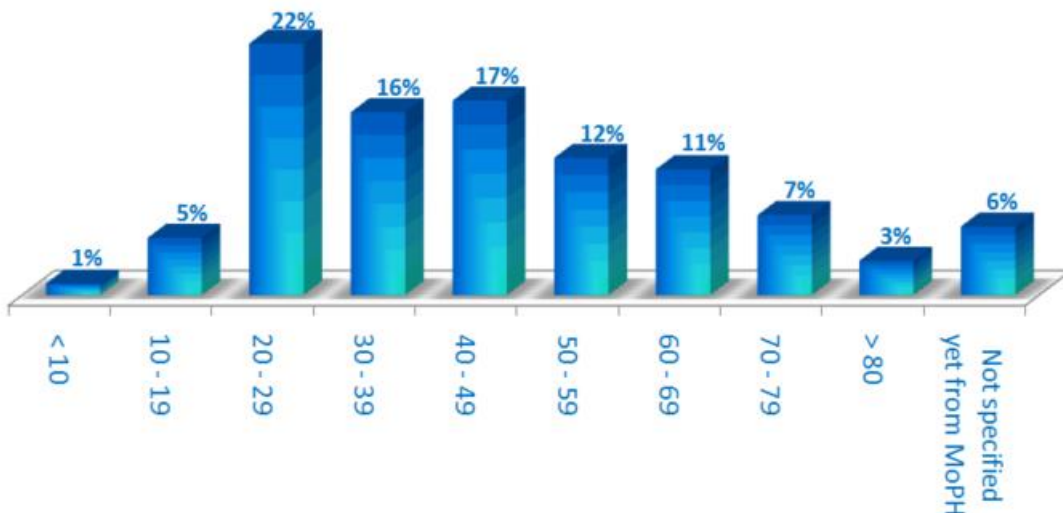


### Distribution of cases by nationality

Lebanese: 364 Cases out of 391 ( 93% )



### Distribution of cases by age group (%)



## Total Artificial Respirators in Public and Private Hospitals

	Public Hospitals	Private Hospitals	Total
Children	42	237	279
Adults	123	783	906
<b>Total</b>	<b>165</b>	<b>1020</b>	<b>1185</b>

## Existing available beds in emergency units and ICUs (both in public and private hospitals)

	Private Hospitals	Public Hospitals	Total
Number of beds in emergency units	878	215	1093
Number of beds in ICU	1972	336	2308
<b>Total number of beds (of all kinds)</b>	<b>12749</b>	<b>2446</b>	<b>15195</b>

## Level of Preparedness of Public and Private Hospitals



Status of Private Hospitals (AUBMC, Hotel Dieu Hospital, Jbeil Maounat Hospital, and Al Roum Hospital)  
 Green: Ready  
 Yellow: District



Status of Public Hospitals  
 Green: Ready  
 Red: Not Ready  
 Blue: Will be ready in a week  
 Yellow: District

Public hospitals ready: RHUH & Baalbek Governmental Hospital, and Bouar Governmental Hospital  
 Public hospitals in the process of becoming ready: as Al Hrawi Hospital, Fattouh hospital, Nabatieh Governmental Hospital, Halba Governmental Hospital, Bshareh Governmental Hospital, Tripoli Governmental hospital, Saïda Governmental Hospital, Hermel Governmental Hospital, bint Jbeil Governmental Hospital, Mashghara Governmental Hospital.

---

## Laboratories Allowed to Conduct COVID-19 Tests (Ministry of Public Health)

---

Name of Laboratory	Location
Rafic Hariri University Hospital	Beirut
AUB	Beirut
Merieux / USJ	Beirut
Saint Georges Roub	Wata A'mara Shalhoub
Bouar Governmental Hospital	Kesrouane
Rizk LAU	Beirut
Baalbek Governmental Hospital	Baalbek

---

## Objectives of the National Operations Room

---

The National Operations Room works on coordinating efforts in order to accomplish the following goals:

**First Objective:** Control the spread of the virus through the application of precautionary measures, minimize direct contact among people, and increase awareness of the population and access to information.

**Second Objective:** Ensure the continuity of services at the national level and adopt and encourage remote working.

**Third Objective:** Increase health sector capacity by continuously assessing available resources, gaps and look for funding and technical assistance to build up capacities and case management.

---

## Measures Introduced in Dealing with the Pandemic of COVID-19

---

### Ministry of Public Health

- Issued a [daily report](#) on new cases and the status of existing cases in government and private hospitals.
- Announced that Bouar Governmental Hospital is now ready to treat COVID-19 patients. The hospital currently has a private wing for coronavirus with 73 beds, of which 4 in the ICU.
- Continues to equip government hospitals in aim of raising bed capacities.

### Lebanese Red Cross

- 398 new suspected cases were transferred to hospitals (14 new cases)
- 636 trained paramedics
- 520 volunteers
- 29 trained ambulance centers

*Details on the Lebanese Red Cross' [official website](#)*

### Security services (Internal Security Forces, General Security, State Security, Army, General Directorate of Civil Defense)

- The Lebanese army and other security services implemented strict measures on all Lebanese territory to ensure public mobilization.
- The army closed 343 shops, dispersed 24 public gatherings in different regions and specifically in vegetable markets, and aided a number of municipalities in raising awareness and sterilizing its regions. The army also controlled the entrances to Nahr El-Bared camp and distributed 500 food boxes in Tripoli.
- General Security Forces tracked potential cases in various Lebanese regions and ensured that they're adhering to the terms of home isolation. In addition, they reported that Bsharreh Governmental Hospital has closed for a week, after one of the doctors working in the hospital tested positive. The entire staff was put in home isolation.
- ISF issued 221 of written warnings to institutions and individuals that violated the [decisions of the Council of Ministers](#).
- The General Directorate of Civil Defense aided 79 different municipalities in making sure that the temperature of those entering and exiting the area is in the safe range. They also aided municipalities in sterilizing roads and buildings' entrances. The General Directorate of Civil Defense also ensured that citizens are adhering to the terms of home isolation.
- State Security Forces collected information from various Lebanese regions, closed commercial stores because they not adhere to health standards. State Security Forces also supported the municipal police.

### Ministry of Foreign Affairs

- Contacted Lebanese embassies and consulates to monitor the situation of the Lebanese abroad, and to ensure that their requirements are secured and that their life conditions are fine.
- The crisis unit at the Ministry of Foreign Affairs held and prepares to hold more meetings to study and discuss the state of Lebanese living abroad, especially students.
- Daily communication on all procedures, measures and issued decisions is occurring with the Lebanese embassies and foreign missions.
- Contacting the Lebanese diplomatic and consulate missions to follow up on the situation of the Lebanese abroad, especially students that want to return to Lebanon.
- Circulating bank account numbers to receive financial assistance and the address of the High Relief Commission to receive other kinds of assistance (decision 1381/5).

#### Ministry of Public Works and Transport

- A Lebanese plane takes off to Frankfurt at 00:50 to Frankfurt with 21 US citizens on board
- DHL cargo plane arrived at 16:45 and left at 17:45
- Sterilize all airport facilities three times per week. The arrival and departure rooms are continuously sterilized on a daily basis.
- - Beirut Port: 5 ships loaded with raw food, livestock, wheat and cars arrived to Beirut and 5 empty ships and two loaded ships are expected to leave by the end of the day.
- Sidon Port: One ship loaded with metal entered the port and one exited.
- Tripoli Port: No recorded ship entry. Three empty ships departed on March 26, 2020 and one on March 27, 2020.
- Jiyeh port: One ship loaded with fuel entered the country.
- - Al-Zahrani Port: No recorded entries, and two recorded departures.
- Tyre Port: No entry recorded.
- Note: Before allowing any ship to enter the port, the entire crew on the ship are examined by the Ministry of Public Health to ensure that there are no coronavirus cases on board.

#### Ministry of Interior and Municipalities

- The Ministry issued circular 40/2020 on March 26, 2020 that determines the schedule of the opening and closing hours of institutions that are exempted from the Cabinet Resolution No. 1, which was issued on 3/15/2020, and Resolution 53/2020, which was issued on 3/24/2020.

#### Ministry of Energy and Water

- The Ministry of Energy and Water issued Circular No. [2/2020](#) on March 23, 2020 extending all contractual deadlines until the end of the state of health emergency.

#### Ministry of Agriculture

- Issued circulars regarding COVID-19 preventive measures in fish markets and fisheries according to which public and private auctions were canceled until further notice. The ministry also stressed on the need of both merchants and customers to adhere to preventive measures.

### Actions Taken at the Governorate and Municipal Level

Governorate	Total number of individuals in home isolation	level of commitment to circulars by governorates
		General Percentage
North	129	100%
Akkar	270	90%
Baalbek-Hermel	50	88%
Bekaa	54	87%
Mount Lebanon	279	90%
South	122	95%
Nabatieh	91	95%

Governorate	Level of commitment to the decision to close all businesses	Sectors violating closure decision
Beirut	85%	Cafes and commercial stores
North	85%	Cafes
Akkar	85%	Cafes and commercial stores
Baalbek-Hermel	75%	Cafes and commercial stores
Bekaa	75%	Motorcyclists and private businesses
Mount Lebanon	85%	Libraries, cafes, and car rental
South	85%	Commercial institutions and private businesses
Nabatieh	85%	Hairdressers, cafes, car repair, public gatherings

### General Directions and Recommendations

- Implement the decisions issued by the Presidency of the Council of Ministers at the level of public and private institutions and municipalities.
- Stay at home and don't go out unless it is necessary.
- Frequently wash hands and follow all safety measures set by the Ministry of Public Health.
- Avoid crowded places and social contact and commit to a safe distance between individuals.
- Seek medical care if you feel fever, cough and difficulty of breathes. Call the Ministry of Public Health hotline 1214 or 76/592699

### Risks that Might Result in the Rapid Spread of the Virus

- Lack of adherence to the medical advisories.
- Disrespecting to compulsory home quarantine.
- The spread of the virus in crowded places.
- Allowing gatherings to take place