



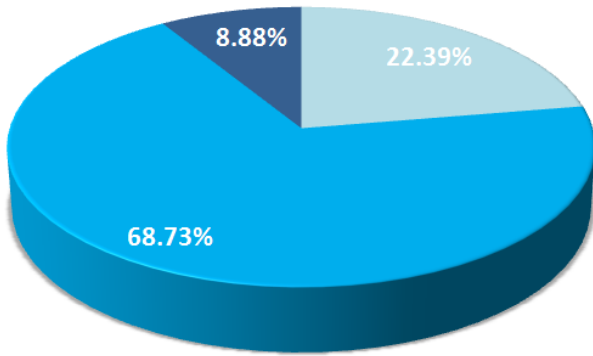
## Lebanon National Operations Room Daily Report on COVID-19 April 8, 2020

Wednesday, April 8, 2020

Report #21

Time Published: 17:00

### Status of cases



■ Asymptomatic   
 ■ Mild/Moderate   
 ■ Severe/Critical

Registered Cases since Feb. 21

**575**

**62**

Recoveries

**19**

Deaths

**27**

12 expatriates

15 Locales

Conducted PCR tests since Feb. 21

**10,808**

PCR tests conducted in the past 24 hrs

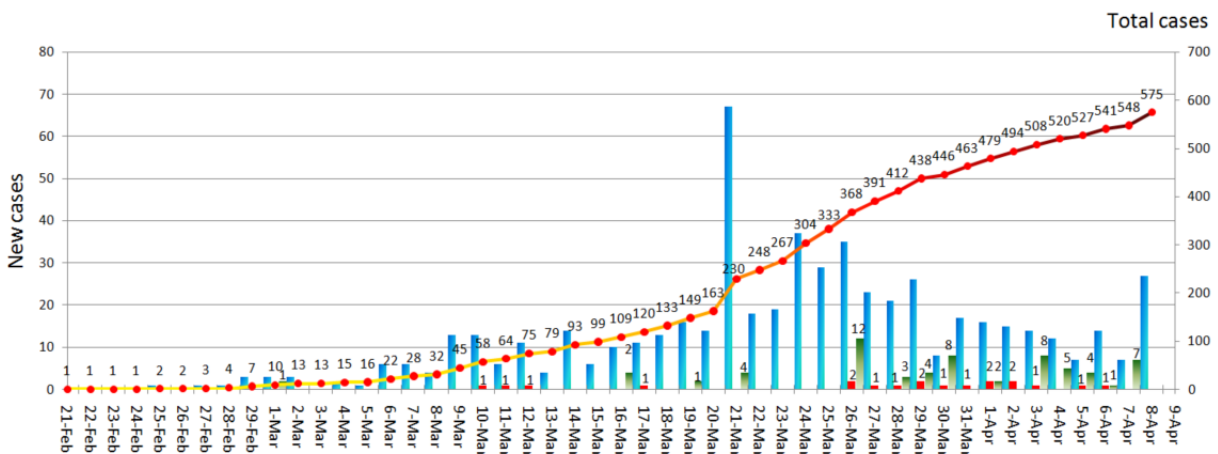
**587**

PCR tests conducted at the Airport since April 5

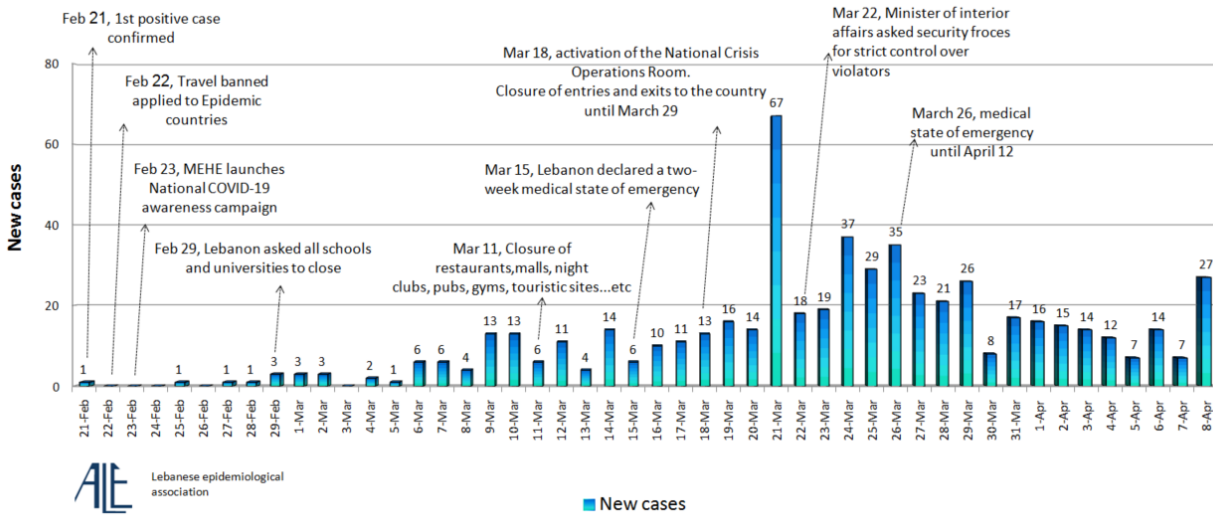
**706**

### Cases per day

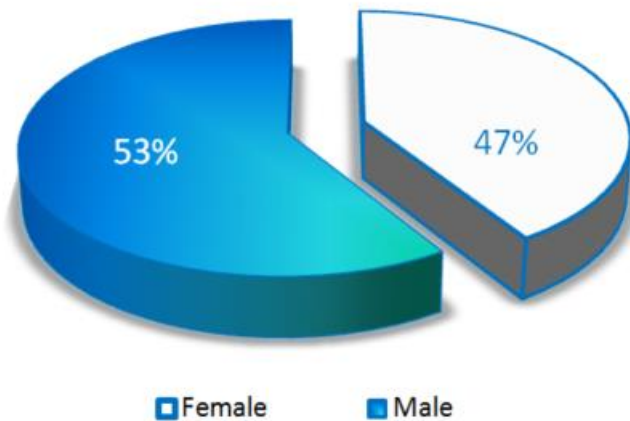
■ New cases   
 ■ Deaths   
 ■ Recovered   
 — Total cases



## Chronology of decisions according to number of cases

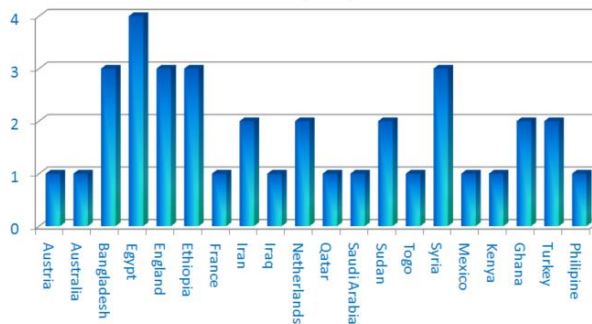


## Cases by Gender

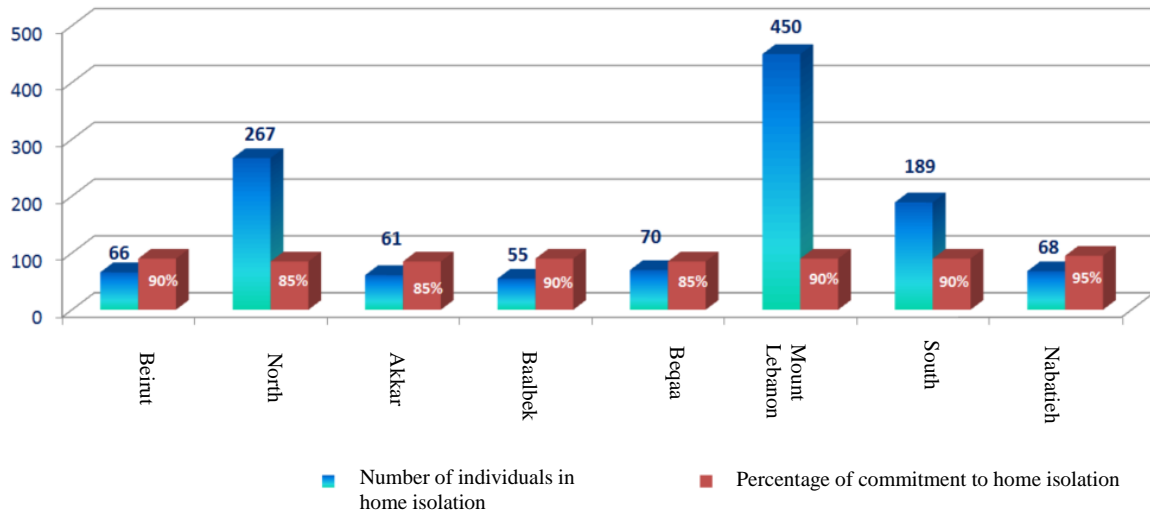


## Distribution of cases by nationality

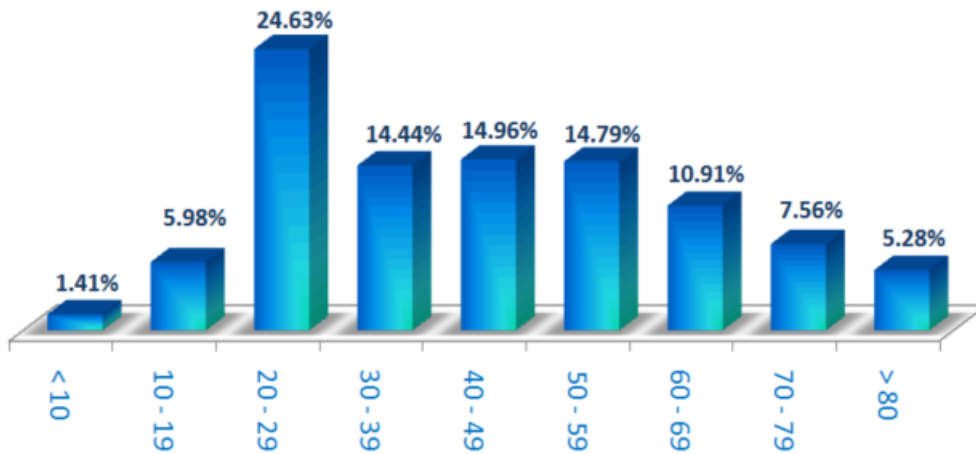
Lebanese: 539 Cases out of 575 (94%)



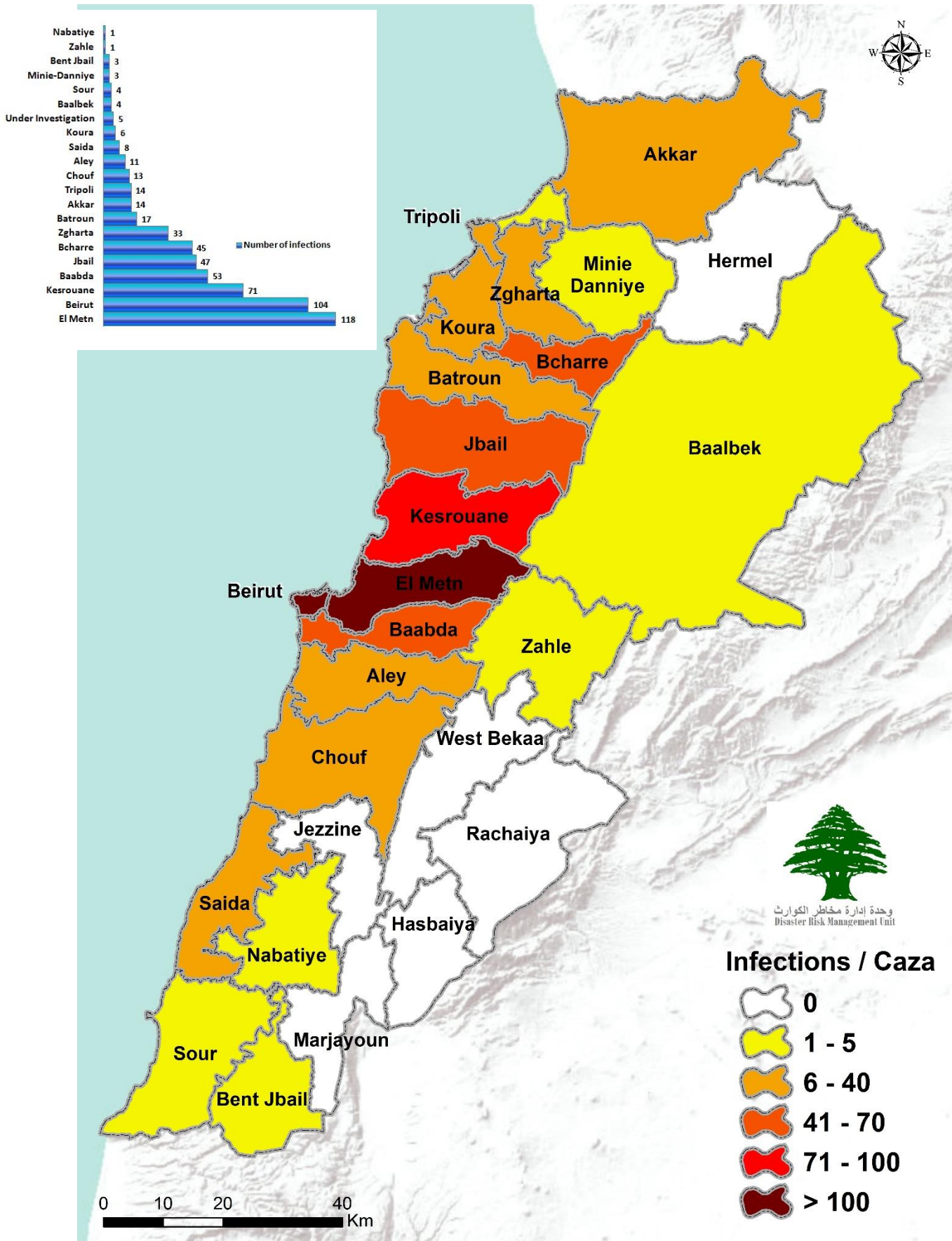
### Number of individuals in home isolation and percentage of commitment to isolation



### Distribution of cases by age group (%)



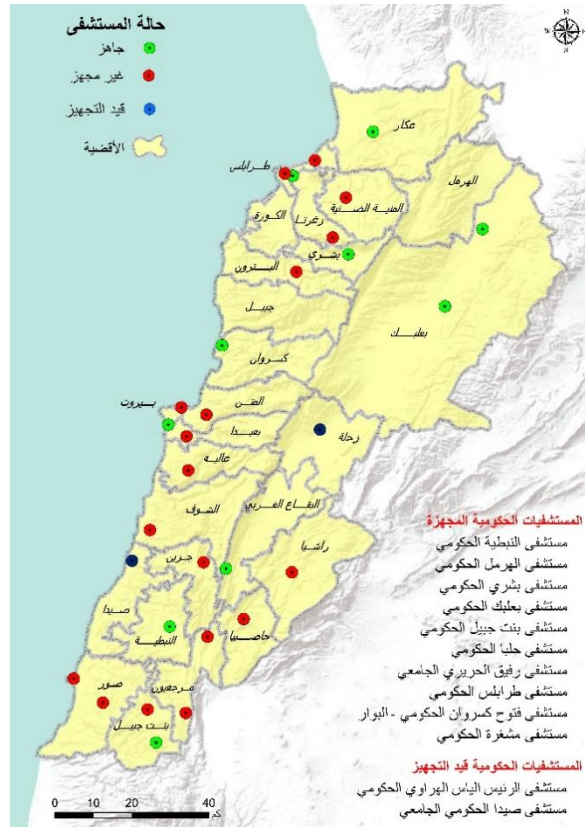
## Number of Cases by Location



## Level of Preparedness of Public and Private Hospitals



Status of Private Hospitals (AUBMC, Hotel Dieu Hospital, Jbeil Maounat Hospital, and Al Roum Hospital)  
Green: Ready  
Yellow: District



Status of Public Hospitals  
Green: Ready  
Red: Not Ready  
Yellow: District  
Blue: Will be ready in a week

Public hospitals ready: RHUH & Baalbek Governmental Hospital, and Bouar Governmental Hospital, Halba Governmental Hospital, Bshareh Governmental Hospital, Tripoli Governmental hospital, bint Jbeil Governmental Hospital, Mashghara Governmental Hospital, Nabatieh Governmental Hospital, Herml Governmental Hospital  
Public hospitals in the process of becoming ready: as Al Hrawi Hospital, Fattouh hospital, Saida Governmental Hospital.

## Laboratories Designated by the Ministry of Public Health to Conduct COVID-19 Tests

| Name of Laboratory   | Location             |
|--|----------------------|
| Rafic Hariri University Hospital                           | Beirut               |
| AUB  | Beirut               |
| Merieux / USJ  | Beirut               |
| Saint Georges Roum   | Wata A'mara Shalhoub |
| Bouar Governmental Hospital                                | Kesrouane            |
| Rizk LAU   | Beirut               |
| Notre Dames de Secours                                     | Byblos               |
| Baalbek Governmental Hospital                              | Baalbek              |
| New Mazloum Hospital                                       | Tripoli              |
| Haykel Hospital  | Koura                |
| Serhal Hospital/ Hopital Dr. S. Serhal                     | Metn                 |
| Hospital of Bhannes Hospitality Center for Charity Sisters | Metn                 |
| Lebanese Hospital Geitaoui                                 | Beirut               |
| Mount Lebanon Hospital                                     | Baabda               |
| Saint George Hospital University Medical Center            | Baabda               |
| Ain Wazain Hospital  | Chouf                |

You can find this report on [drm.pcm.gov.lb](http://drm.pcm.gov.lb) or on our social media platforms: @DRM\_Lebanon

---

## Measures Introduced in Dealing with the Pandemic of COVID-19

---

### Ministry of Public Health

- Issued a [daily report](#) on new cases and the status of existing cases in government and private hospitals.
- Implemented the health measures agreed upon within the Lebanese government's plan to return Lebanese expatriates during flights and at the airport, and defined the required isolation procedures according to the health status of expatriates in coordination with the Committee for the Follow up on Coronavirus Preventive Measures and Procedures, the Ministry of Foreign Affairs, the Ministry of Public Works and Transport, the General Directorate of Public Security and Middle East Airlines.
- Continues to equip government hospitals and others.
- Field examination of the hospitals and laboratories designated by the ministry to deal with the emerging coronavirus.

### Lebanese Red Cross

- 572 new suspected cases were transferred to hospitals (13 new cases)
- 830 trained paramedics (5new)
- 520 volunteers
- 34 trained ambulance centers

*Details on the Lebanese Red Cross' [official website](#)*

### Security services (Internal Security Forces, General Security, State Security, Army, General Directorate of Civil Defense)

- The Lebanese army and other security services implemented strict measures on all Lebanese territory to ensure public mobilization.
- The army closed 222 shops, dispersed 20 public gatherings. The army also supported a number of municipalities in implementing precautionary measures. The army also shared the names of the 95 blocked roads by the municipalities.
- General Security Forces tracked potential cases in various Lebanese regions and ensured that they're adhering to the terms of home isolation. In addition, they dispersed several gatherings and aided several municipalities in issuing several written warnings to institutions and individuals that did not adhere to the [decisions of the Council of Ministers](#). The forces also raised awareness on the virus among Syrian refugees.
- ISF issued 1167 written warnings, of which 910 directed at cars that violated the decision of the Ministry of Interior and Municipalities, 193 warnings were directed at institutions and 64 were directed at individuals who violated the [decisions of the Council of Ministers](#).
- The General Directorate of Civil Defense carried out 7 transportation missions for dialysis patients to hospitals based on the Minister of Interior and Municipalities Decision No. 479/2020. It also prepared 50 personnel and 10 ambulances, to interfere, when necessary, and transport those infected with the emerging coronavirus. It also carried out sterilization missions in public and private areas that were excluded from the decision to close.
- State Security Forces visited different Lebanese regions and closed a number of shops as well as organized gatherings in front of banks and ATMs. The forces also issued warnings institutions that violated the public mobilization decision and dispersed public gatherings.

### Ministry of Foreign Affairs

- The ministry was informed that several expatriated donated money to governmental hospitals and the medical staff.
- The Ministry of Foreign Affairs continues to communicate daily with Lebanese missions and external parties regarding the provision of medical assistance.
- The ministry is working in direct coordination with the Committee for the Follow up on Coronavirus Preventive Measures and Procedures, the Ministry of Public Health, the General Directorate of General Security, the General Directorate of Civil Aviation and the Middle East Airlines to ensure that all agreed procedures are being implemented when it comes to returning Lebanese expatriates.
- The ministry continues to complete the records of Lebanese expatriates arriving to Lebanon on flights scheduled for Thursday, April 9, 2020 from a number of European, Arab and African countries.
- Note:  
Website for Lebanese expatriates who wish to return to Lebanon: <https://mfa.gov.lb/arabic/return-to-lebanon>  
Website for student expatriates: <https://mfa.gov.lb/arabic/students-abroad>

You can find this report on [drm.pcm.gov.lb](http://drm.pcm.gov.lb) or on our social media platforms: @DRM\_Lebanon

### Ministry of Public Works and Transport

- A cargo plane arrived from Kuwait loaded with various goods at 12:05 and left at 13:05.
- A Spanish military aircraft landed at 16: 35 and took off at 17:05.
- A DHL cargo plane arrived from Bahrain loaded with various goods at 19:40 and left at 21:05.
- A Qatari cargo plane loaded with livestock is expected to arrive at 23:05.
- A special plane belonging to Middle East Airlines landed at 13:20 from Paris with 6 Lebanese citizens on board.
- A Middle East Airlines private plane landed at 2:00 pm from Liberia with 14 Lebanese citizens on board.
- A private plane lands from Africa at 20:30 with 8 Lebanese citizens on board.
- A private plane arrived from Greece at 14:30 with 9 Lebanese citizens on board.
- - Beirut Port: A ship coming from Egypt loaded with vegetables, a ship from Russia to unload oil derivatives, a ship loaded with livestock, a warship, three ships for loading and unloading containers, entering an empty ship from Limassol to the drilling area in the sea. Three ships leave for Alexandria, Antalya and Limassol loaded with containers.
- Port of Sdion: A ship arrived from Italy loaded with marble and cars, and two empty ships left/
- Port of Tripoli: A ship arrived from Alexandria loaded with vegetables, a ship arrived empty from from Tartus. A ship left to Turkey loaded with containers, a ship left to Latakia loaded with containers, a ship left to Turkey loaded with trucks and a ship left to Port Said.
- Jiyeh port: One ship loaded with fuel entered.
- Jounieh Port: One ship arrived from Beirut Port loaded with diesel and a ship left to Russia.
- No entry or exits has been recorded in other ports.
- **Note:** Before allowing any ship to enter the port, the entire crew on the ship are examined by the Ministry of Public Health to ensure that there are no coronavirus cases on board.

### Ministry of Interior and Municipalities

- The ministry is following up on the issued Decree No. 475 on April 5, 2020, stating the new regulation allowing the mobilization of cars and trucks on specific days of the week according to their number plates.

### Ministry of Agriculture

- Under the framework of the food security emergency plan, the Ministry of Agriculture, in cooperation with the Ministry of Economy and Trade, launched the weekly regulations for the prices of vegetables and animal products on the website of the Ministry of Agriculture with the aim of protecting consumers and combatting high prices. (<http://www.agriculture.gov.lb/Statistics-and-Studies/Products-Prices>)
- A team from the Ministry of Agriculture, in support of the consumer protection patrols and the municipal police, are monitoring merchants' compliance with the regulations set by the ministry.

### Ministry of Social Affairs

- The ministry is addressing the repercussions of the coronavirus. Within the first stage of the plan, the ministry collects all the data available through a national program in aim of supporting the poor families, the disabled and those with special needs, and citizens who lost their jobs due to the crisis. Information is collected in coordination with the Presidency of the Council of Ministers and the municipalities.
- Announced 1766 as its hotline to receive citizen complaints.

---

## Actions Taken at the Governorate and Municipal Level

---

### Isolation centers approved by The Committee for the Follow up on Coronavirus Preventive Measures and Procedures

Wednesday, April 1, 2020

The committee responsible for specifying potential isolation centers includes an officer from the General Secretariat of the Supreme Council of Defense, a medical doctor in the army, an engineer from the army, and a representative from the Order of Nurses in Lebanon.

The committee aims to inspect possible isolation centers in coordination with the concerned governorates and municipalities.

| Governorate   | Number of isolation centers |
|---------------|-----------------------------|
| Mount Lebanon | 10                          |
| North         | 2                           |
| South         | 1                           |
| Akkar         | 5                           |
| Bekaa         | 5                           |
| <b>Total</b>  | <b>23</b>                   |

| Governorate    | Level of commitment to the decision to close all businesses | Sectors violating closure decision   |
|----------------|---|--|
| Beirut         | 80%   | Commercial stores, violating the car mobility decision   |
| North          | 75%   | 2 protests, commercial stores, violating the car mobility decision, vegetables market            |
| Akkar          | 80%   | Public gatherings at night, motorcyclists, Syrian refugees' gatherings in front of ATM machines. |
| Baalbek-Hermel | 82%   | Commercial stores and private businesses.  |
| Bekaa          | 85%   | Public gatherings and commercial stores.   |
| Mount Lebanon  | 85%   | Commercial stores  |
| South          | 85%   | Commercial stores and private businesses   |
| Nabatieh       | 83%   | Public gatherings in supermarkets, commercial stores, gatherings in front of ATM machines.       |

---

### Objectives of the National Operations Room

---

**The National Operations Room works on coordinating efforts in order to accomplish the following goals:**

**First Objective:** Control the spread of the virus through the application of precautionary measures, minimize direct contact among people, and increase awareness of the population and access to information.

**Second Objective:** Ensure the continuity of services at the national level and adopt and encourage remote working.

**Third Objective:** Increase health sector capacity by continuously assessing available resources, gaps and look for funding and technical assistance to build up capacities and case management.

| General Directions and Recommendations   | Risks that Might Result in the Rapid Spread of the Virus  |
|--|---|
| <ul style="list-style-type: none"> <li>• Implement the decisions issued by the Presidency of the Council of Ministers at the level of public and private institutions and municipalities.</li> <li>• Stay at home and don't go out unless it is necessary.</li> <li>• Frequently wash hands and follow all safety measures set by the Ministry of Public Health.</li> <li>• Avoid crowded places and social contact and commit to a safe distance between individuals.</li> <li>• Seek medical care if you feel fever, cough and difficulty of breathes. Call the Ministry of Public Health hotline 1214 or 01-594459</li> </ul> | <ul style="list-style-type: none"> <li>• Lack of adherence to the medical advisories.</li> <li>• Disrespecting to compulsory home quarantine.</li> <li>• The spread of the virus in crowded places.</li> <li>• Allowing gatherings to take place</li> </ul> |



