



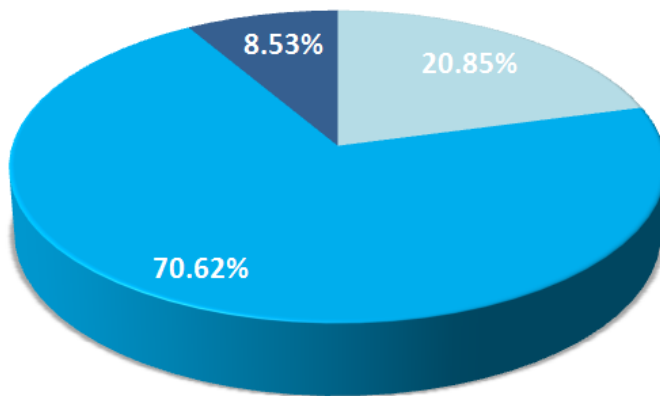
Lebanon National Operations Room Daily Report on COVID-19 April 3, 2020

Friday, April 3, 2020

Report #16

Time Published: 18:00

Cases per day



Number of registered cases since Feb. 21

508

New cases

14

Total deaths

17

Total recoveries

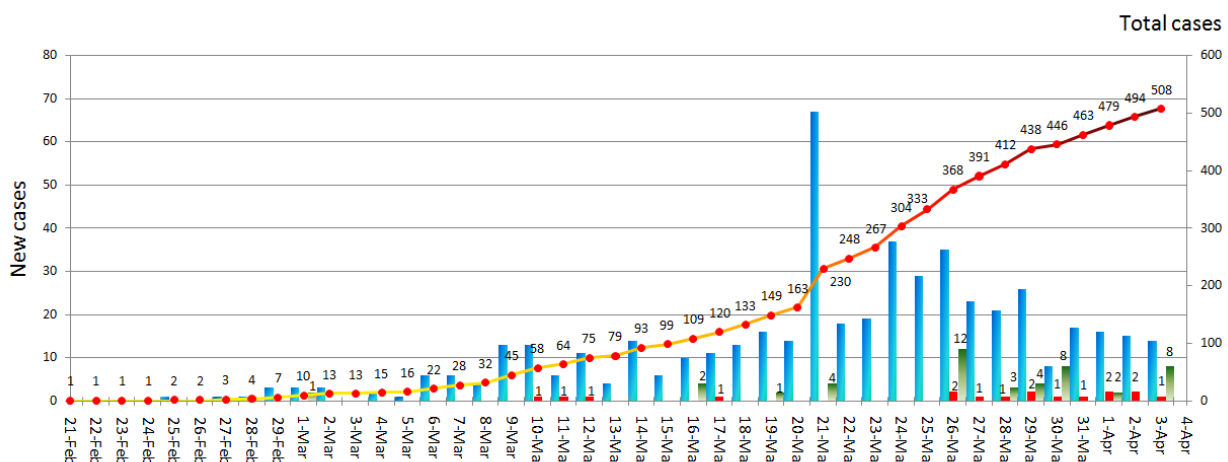
45

Total conducted tests

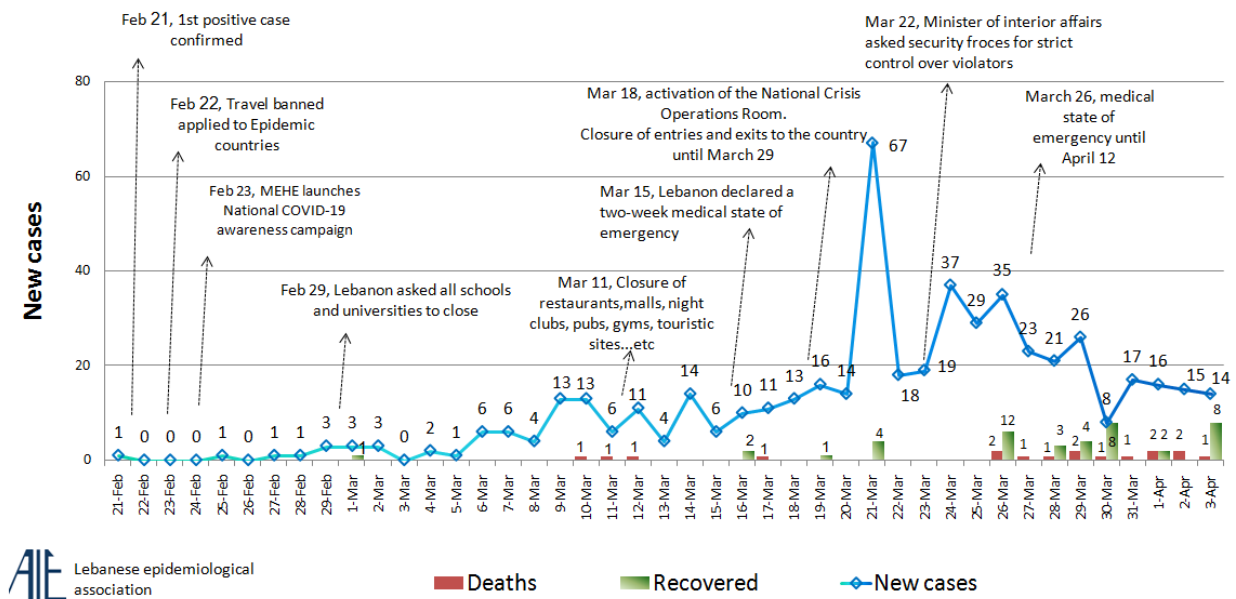
8472

Cases per day

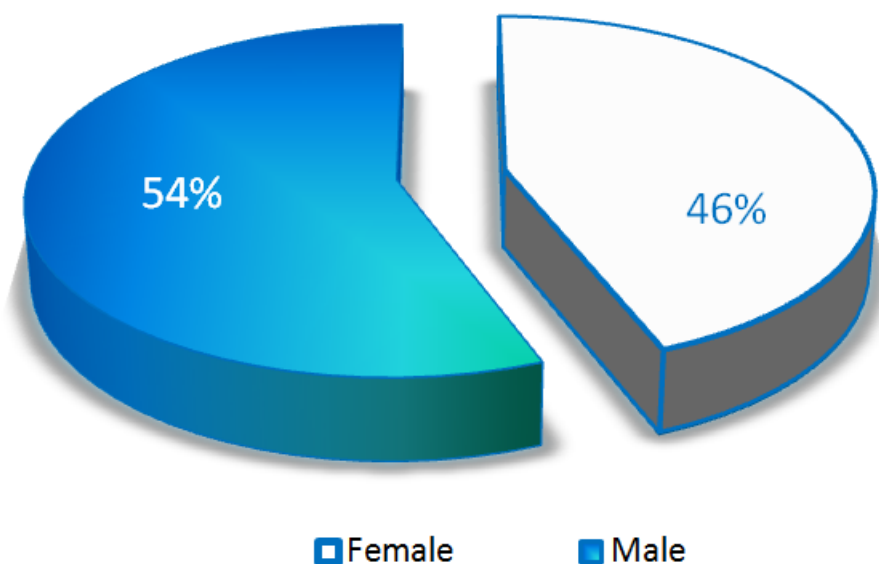
■ New cases ■ Deaths ■ Recovered ● Total cases



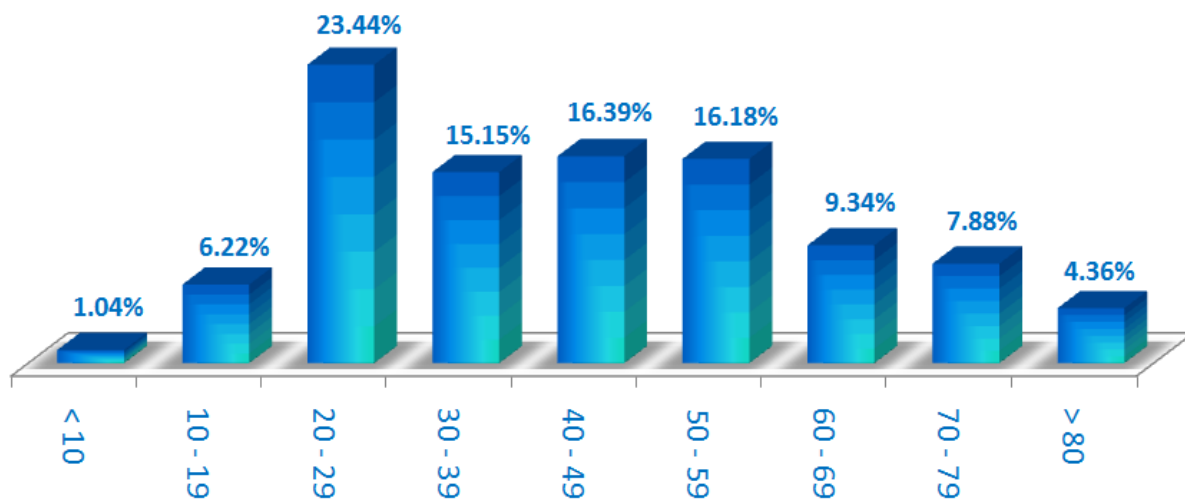
Trend of cases vis-à-vis precautionary measures introduced by Government



Cases by Gender

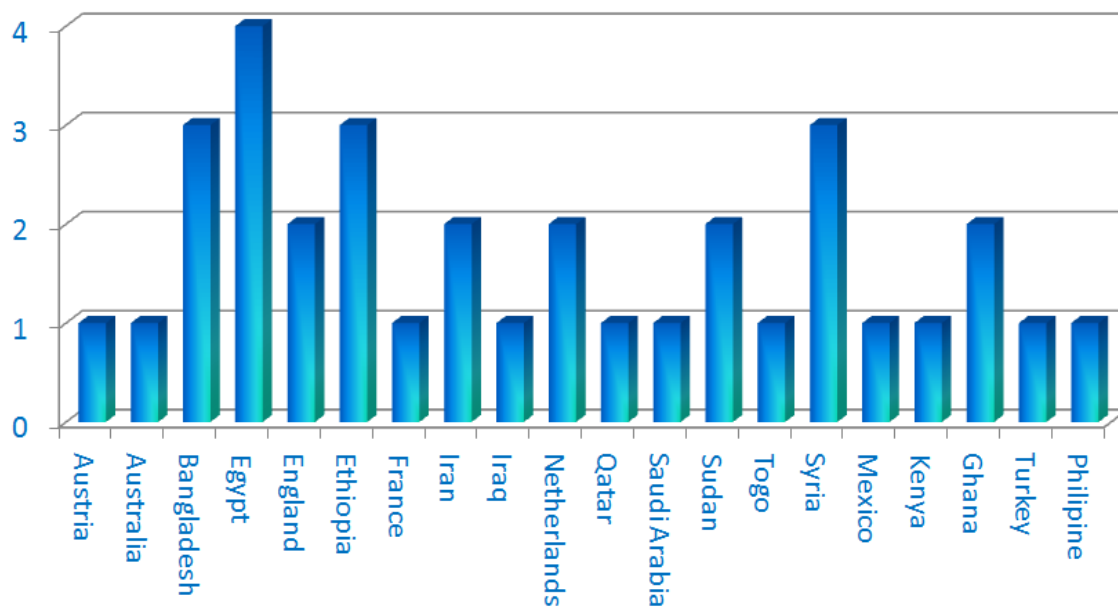


Distribution of cases by age group (%)

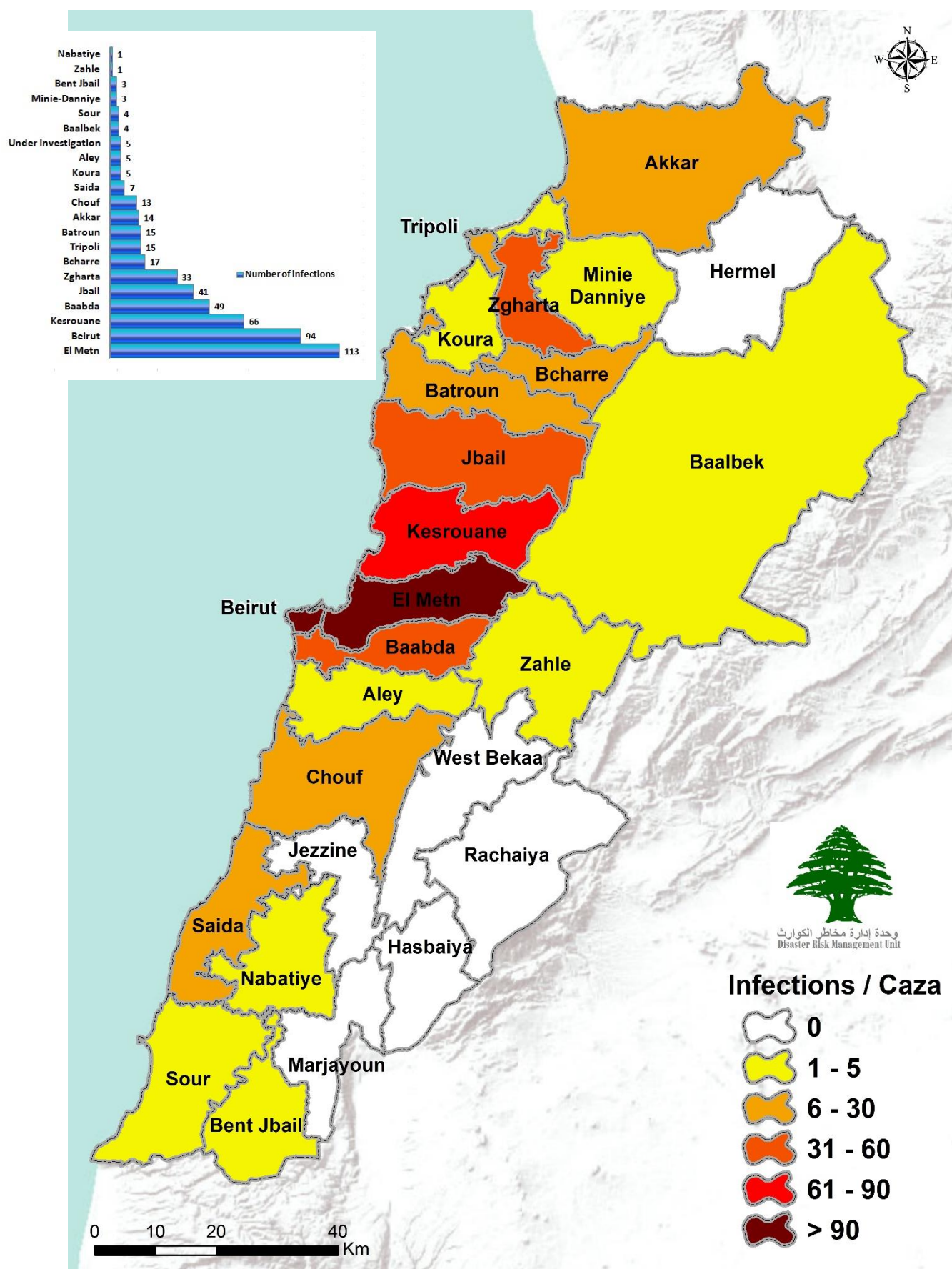


Distribution of cases by nationality

Lebanese: 474 Cases out of 508 (93%)



Number of Cases by Location



Total Artificial Respirators in Public and Private Hospitals

	Public Hospitals	Private Hospitals	Total
Children	42	237	279
Adults	123	783	906
Total	165	1020	1185

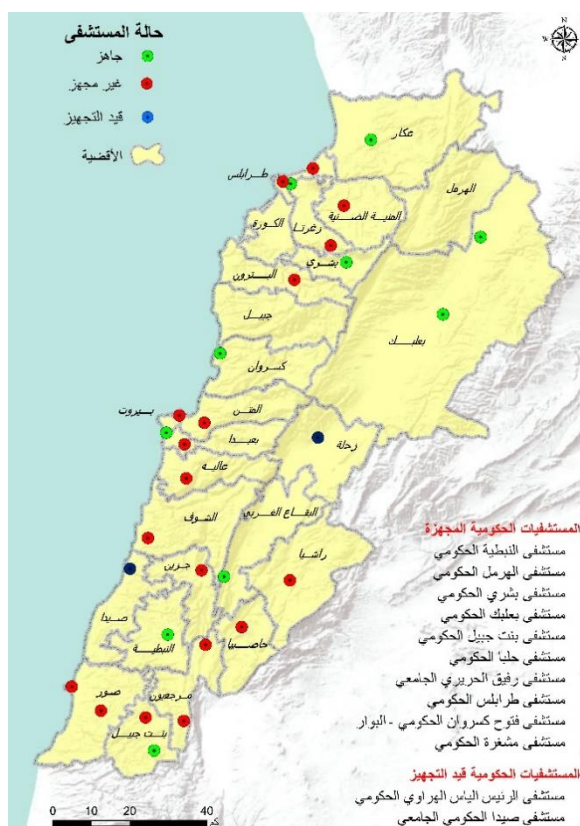
Existing available beds in emergency units and ICUs (both in public and private hospitals)

	Private Hospitals	Public Hospitals	Total
Number of beds in emergency units	878	215	1093
Number of beds in ICU	1972	336	2308
Total number of beds (of all kinds)	12749	2446	15195

Level of Preparedness of Public and Private Hospitals



Status of Private Hospitals (AUBMC, Hotel Dieu Hospital, Jbeil Maounat Hospital, and Al Roum Hospital)
 Green: Ready
 Yellow: District



Status of Public Hospitals
 Green: Ready
 Red: Not Ready
 Yellow: District
 Blue: Will be ready in a week

Public hospitals ready: RHUH & Baalbek Governmental Hospital, and Bouar Governmental Hospital. Halba Governmental Hospital, Bsharh Governmental Hospital, Tripoli Governmental hospital, , bint Jbeil Governmental Hospital, Mashghara Governmental Hospital, Nabatieh Governmental Hospital , Hermel Governmental Hospital

Public hospitals in the process of becoming ready: as Al Hrawi Hospital, Fattouh hospital, Saida Governmental Hospital.

Laboratories Allowed to Conduct COVID-19 Tests (Ministry of Public Health)

Name of Laboratory	Location
Rafic Hariri University Hospital	Beirut
AUB	Beirut
Merieux / USJ	Beirut
Saint Georges Roum	Wata A'mara Shalhoub
Bouar Governmental Hospital	Kesrouane
Rizk LAU	Beirut
Notre Dames de Secours	Byblos
Baalbek Governmental Hospital	Baalbek

Measures Introduced in Dealing with the Pandemic of COVID-19

Ministry of Public Health

- Issued a [daily report](#) on new cases and the status of existing cases in government and private hospitals.
- Continues to equip government hospitals in aim of raising bed capacities.
- The Ministry of Public Health announced that the number of government hospitals that are ready to receive new cases infected with the Corona virus has reached 10.

Lebanese Red Cross

- 509 new suspected cases were transferred to hospitals (29 new cases)
- 760 trained paramedics
- 520 volunteers
- 31 trained ambulance centers

Details on the Lebanese Red Cross' [official website](#)

Security services (Internal Security Forces, General Security, State Security, Army, General Directorate of Civil Defense)

- The Lebanese army and other security services implemented strict measures on all Lebanese territory to ensure public mobilization.
- The army closed 450 shops, dispersed 33 public gatherings. The army also supported 5 municipalities in implementing precautionary measures and organized the entry and exit to Nahr al Bared in the North and two Syrian camps in the Beqaa. The army also shared the names of the 111 blocked roads by the municipalities.
- General Security Forces tracked potential cases in various Lebanese regions and ensured that they're adhering to the terms of home isolation. In addition, they dispersed several gatherings and aided several municipalities in issuing several written warnings to institutions and individuals that did not adhere to the [decisions of the Council of Ministers](#). The forces also aided members of the UNHCR on checking the situation of camps.
- ISF issued 360 written warnings, of which 151 warnings were directed at institutions and 208 were directed at individuals who violated the [decisions of the Council of Ministers](#). ISF announced that the total issued warnings since March 8 reached 4271 warnings.
- The General Directorate of Civil Defense trained 50 members and prepared 10 ambulance cars for emergencies. It has also sterilized a number of public and private areas and institutions that were excluded from the public mobilization decision and examined the temperature of passengers and assured that citizens are adhering to quarantine.
- State Security Forces visited different Lebanese regions, especially in Mount Lebanon, Beirut, and Nabatiyeh.

Ministry of Foreign Affairs

- The ministry distributed once again to all Lebanese consolidates and embassies the two forms that Lebanese can fill in case they want to return to their home country or if they're having difficulty transferring money from Lebanon.
<https://mfa.gov.lb/arabic/return-to-lebanon> - <https://mfa.gov.lb/arabic/students-abroad>
- The ministry was informed that several expatriated donated money to governmental hospitals and the medical staff.
- The Ministry of Foreign Affairs continues to communicate daily with Lebanese missions and external parties regarding the provision of medical assistance.

You can find this report on drm.pcm.gov.lb or on our social media platforms: @DRM_Lebanon

- Based on the plan approved by the Council of Ministers regarding the return of Lebanese expatriates, the Ministry will complete its contacts with all Lebanese embassies in order to prepare detailed tables with the names of the Lebanese who will be evacuated. The ministry also coordinates directly with the Ministry of Public Health to ensure that all travelers will fill out health forms before they board flights. It also coordinates with the General Directorate of Civil Aviation and the Middle East Airlines to determine the flight schedule and all matters related to travel procedures.

Ministry of Public Works and Transport

- An Emirati plane loaded with various landed at 10:05 and left at 13:15.
- A DHL cargo plane will arrive from Doha at 19:05 and is expected to leave at 21:05.
- A Qatari cargo plane is expected to land at 20:40 and leave at 22:10.
- An Egyptian cargo plane is expected to arrive to Beirut at 23:15 and to depart at 00:15.
- A French plane landed at 14:14 to evacuate 151 French citizens and departed at 16:00.
- Beirut Port: One ship loaded with gasoline and a military barge entered the country.
- Tripoli port: One ship loaded with salt entered.
- Byblos port: One ship loaded with fuel entered the country.
- Other Ports: No entry or departure was recorded in other ports.
- **Note:** Before allowing any ship to enter the port, the entire crew on the ship are examined by the Ministry of Public Health to ensure that there are no coronavirus cases on board.

Ministry of Education and Higher Education

- The ministry issued circular 28 on 1/4/2020 which suspended the acceptance of applications to official exams by free applicants.
- The ministry issued Circular No. 29 on 1/4/2020 regarding the implementation of distant education and a mechanism for calculating teaching hours for teachers.

Others

- The Social Workers' Syndicate in Lebanon assigned 25 regional coordinators and 250 social workers to intervene in various governorates and help monitor quarantined cases, with the support of the Ministry of Public Health, governorates, and municipalities.

Actions Taken at the Governorate and Municipal Level

Isolation centers approved by The Committee for the Follow up on Coronavirus Preventive Measures and Procedures

Wednesday, April 1, 2020

The committee responsible for specifying potential isolation centers includes an officer from the General Secretariat of the Supreme Council of Defense, a medical doctor in the army, an engineer from the army, and a representative from the Order of Nurses in Lebanon.

The committee aims to inspect possible isolation centers in coordination with the concerned governorates and municipalities.

Governorate	Number of isolation centers
Mount Lebanon	10
North	2
South	1
Akkar	5
Bekaa	5
Total	23

Governorate	Total number of individuals in home isolation	level of commitment to circulars by governorates	Number of local groups managing the crisis on a municipal level
		General Percentage	
North	229	80%	81
Akkar	344	85%	123
Baalbek-Hermel	43	89%	44

You can find this report on drm.pcm.gov.lb or on our social media platforms: @DRM_Lebanon

Bekaa	119	90%	126
Mount Lebanon	359	90%	171
South	90	90%	116
Nabatieh	38	95%	86

Governorate	Level of commitment to the decision to close all businesses	Sectors violating closure decision
Beirut	80%	Traffic, commercial stores
North	80%	Public gatherings, protests
Akkar	75%	Gatherings in front of ATM machines
Baalbek-Hermel	75%	Memorials, gathering in front of supermarkets, factories, and commercial stores
Bekaa	80%	Gatherings in front of ATM machines, gathering in front of supermarkets, and the area had some problems with factories that are not abiding by the preventative measures
Mount Lebanon	80%	Commercial stores
South	80%	Public gathering, traffic
Nabatieh	80%	Gatherings in front of ATM machines, traffic, public gatherings

Objectives of the National Operations Room

The National Operations Room works on coordinating efforts in order to accomplish the following goals:

First Objective: Control the spread of the virus through the application of precautionary measures, minimize direct contact among people, and increase awareness of the population and access to information.

Second Objective: Ensure the continuity of services at the national level and adopt and encourage remote working.

Third Objective: Increase health sector capacity by continuously assessing available resources, gaps and look for funding and technical assistance to build up capacities and case management.

General Directions and Recommendations	Risks that Might Result in the Rapid Spread of the Virus
<ul style="list-style-type: none"> Implement the decisions issued by the Presidency of the Council of Ministers at the level of public and private institutions and municipalities. Stay at home and don't go out unless it is necessary. Frequently wash hands and follow all safety measures set by the Ministry of Public Health. Avoid crowded places and social contact and commit to a safe distance between individuals. Seek medical care if you feel fever, cough and difficulty of breathes. Call the Ministry of Public Health hotline 1214 or 76/592699 	<ul style="list-style-type: none"> Lack of adherence to the medical advisories. Disrespecting to compulsory home quarantine. The spread of the virus in crowded places. Allowing gatherings to take place

