



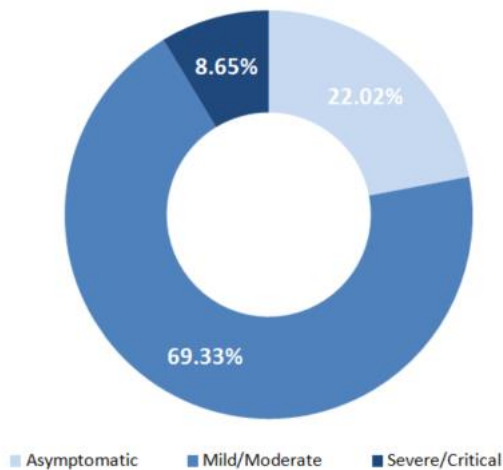
Lebanon National Operations Room Daily Report on COVID-19 April 12, 2020

Sunday, April 12, 2020

Report #25

Time Published: 16:30

Status of cases



Registered Cases since Feb. 21

630

77

Recoveries

20

Deaths

11 New cases

11 locales

0 Expatriates

Conducted PCR tests since Feb. 21

13,240

PCR tests conducted in the past 24 hrs

527

PCR tests conducted in the airport since April 5

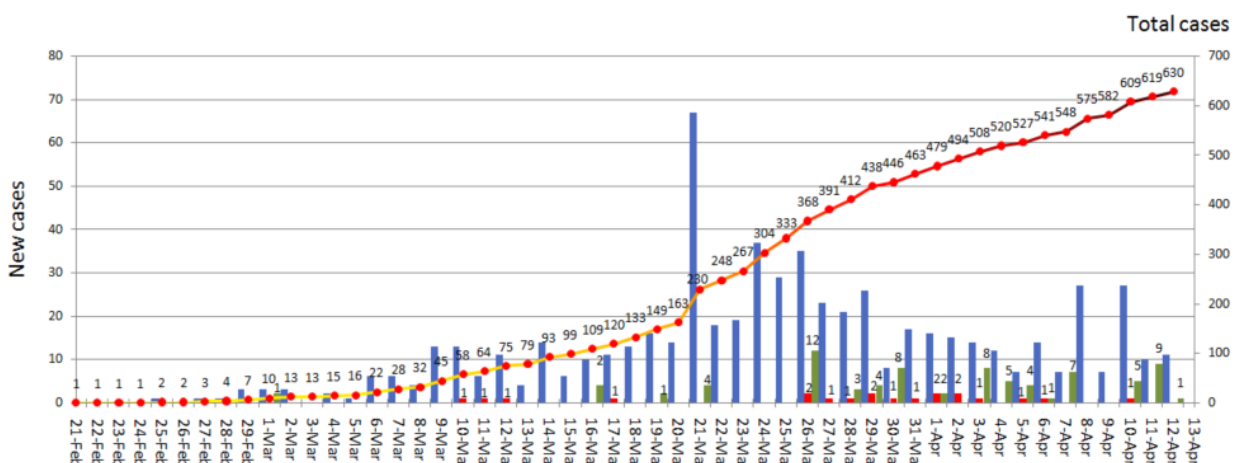
1,912

PCR tests conducted in the airport in the last 24 hours

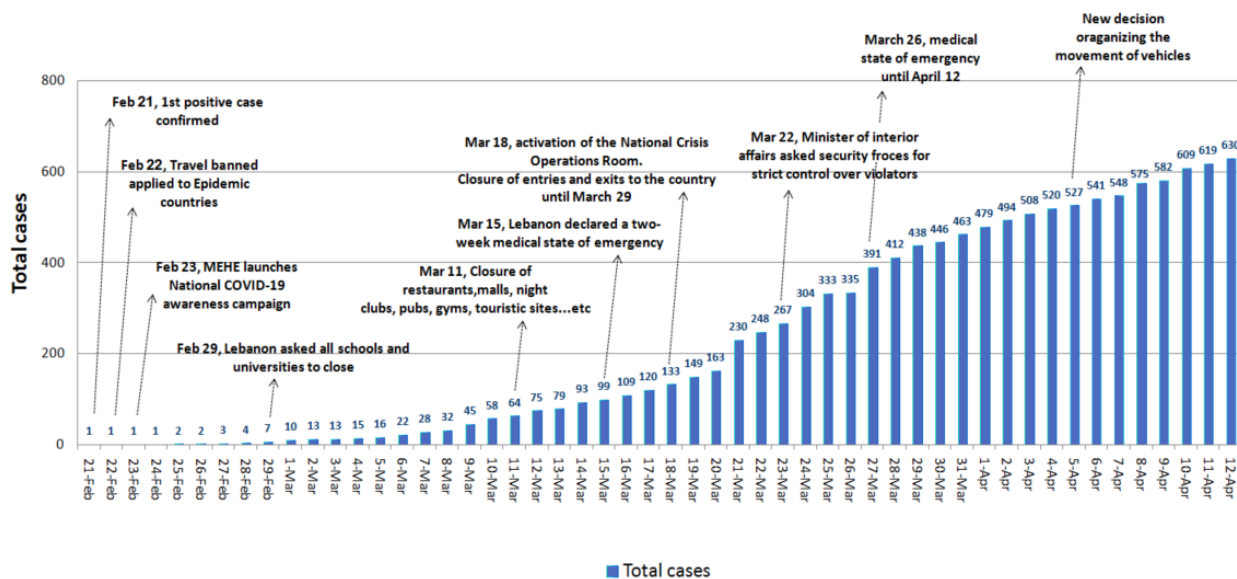
570

Cases per day

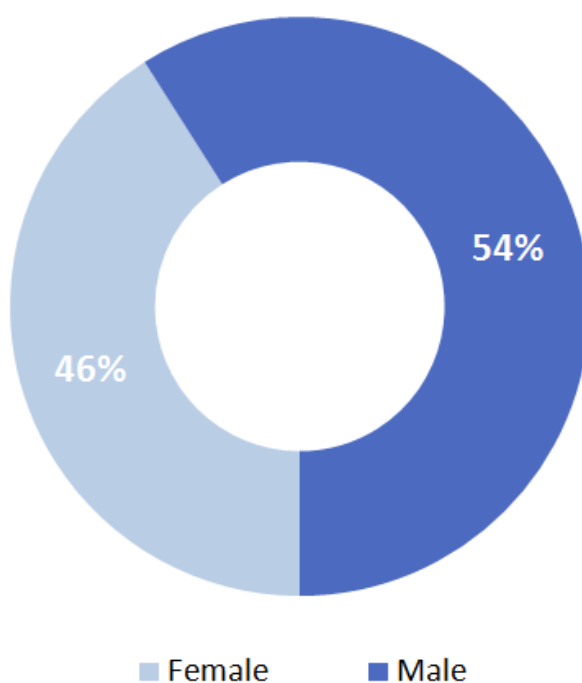
New cases Deaths Recovered Total cases



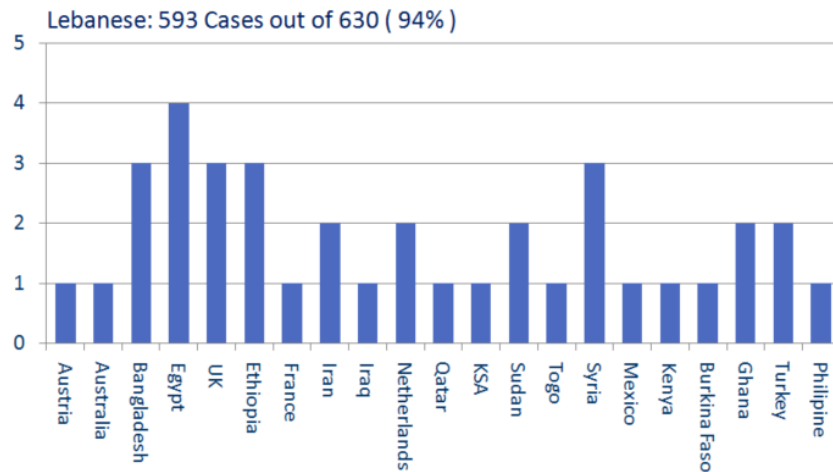
Chronology of decisions according to number of cases



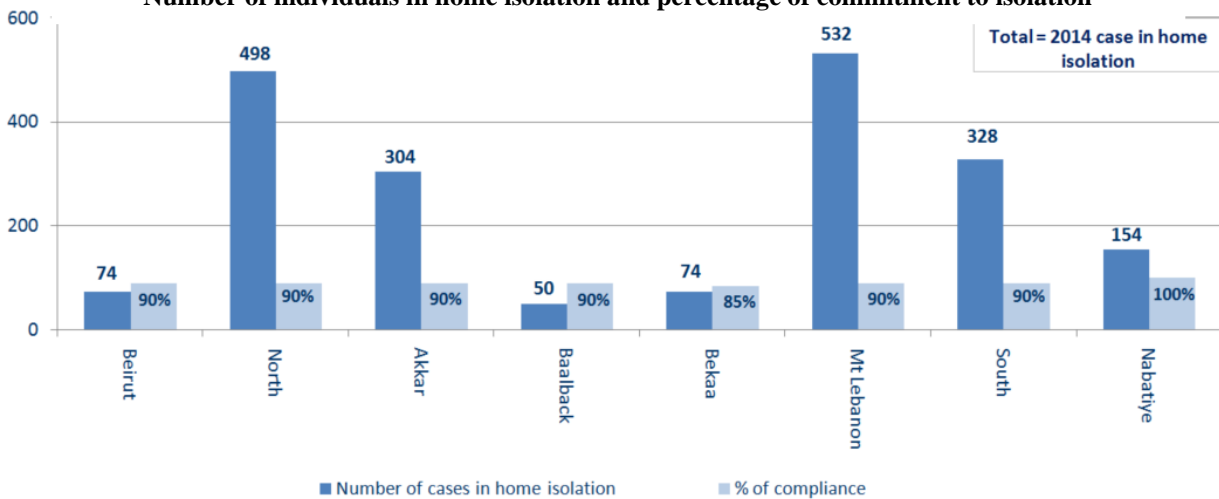
Cases by Gender



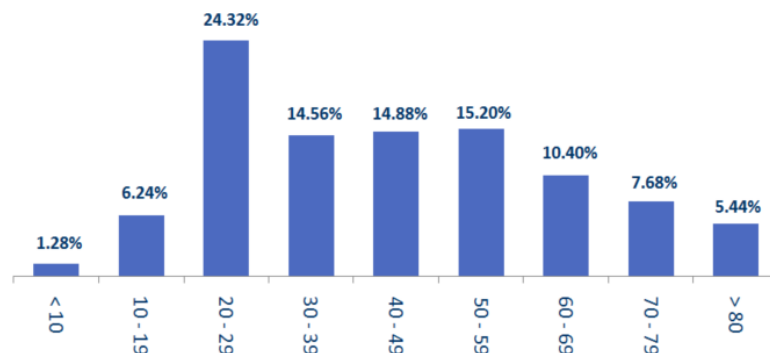
Distribution of cases by nationality



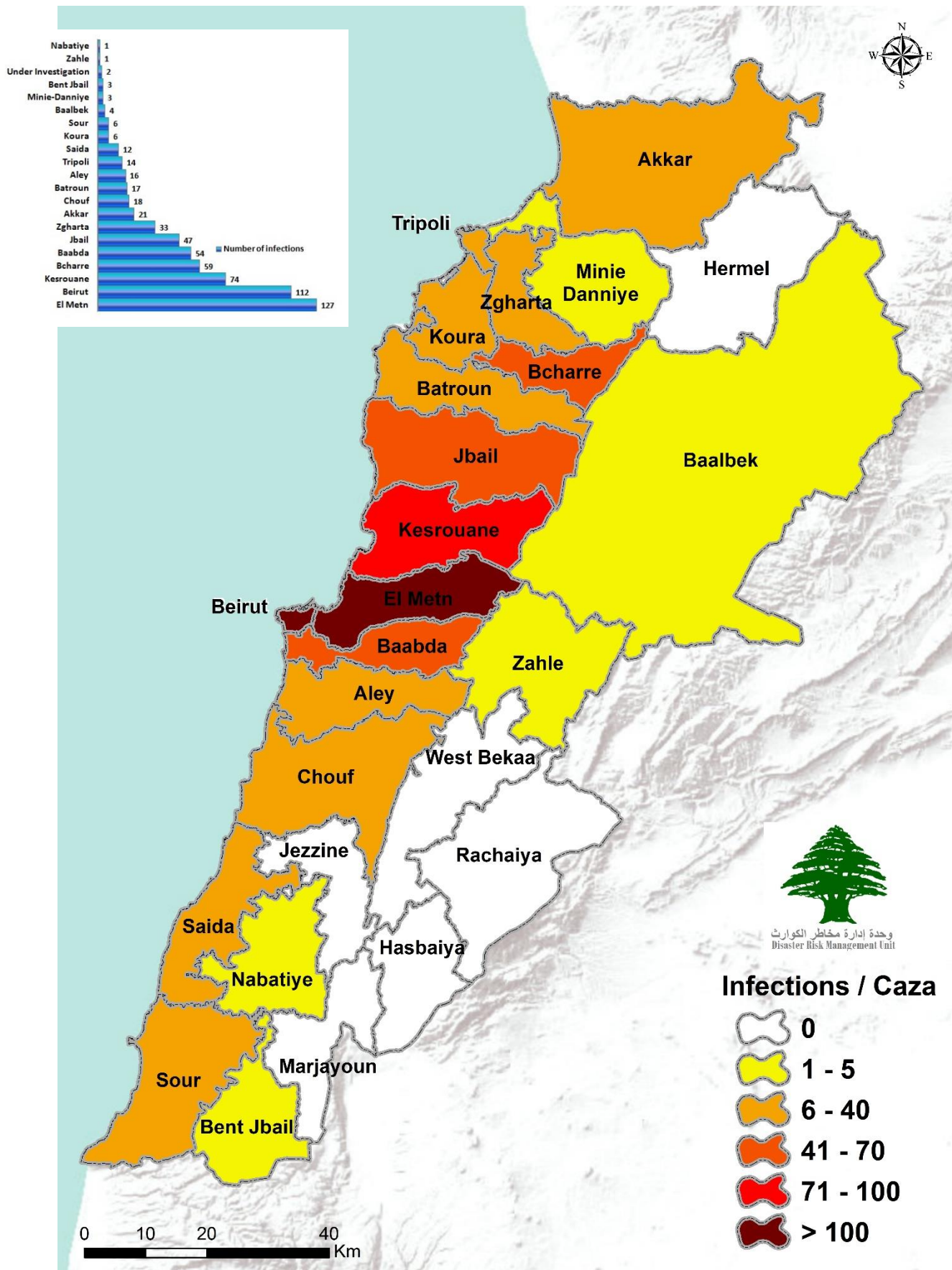
Number of individuals in home isolation and percentage of commitment to isolation



Distribution of cases by age group (%)



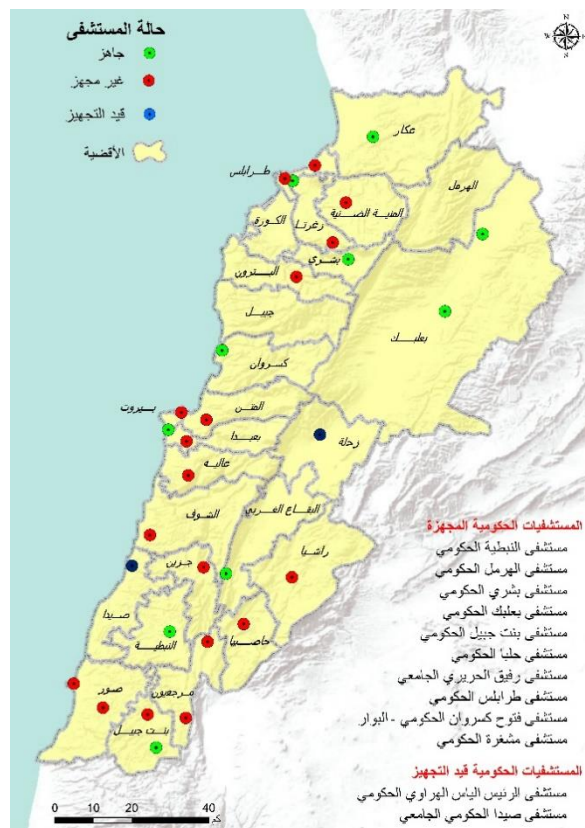
Number of Cases by Location



Level of Preparedness of Public and Private Hospitals



Status of Private Hospitals (AUBMC, Hotel Dieu Hospital, Jbeil Maounat Hospital, and Al Roum Hospital)
 Green: Ready
 Yellow: District



Status of Public Hospitals
 Green: Ready
 Red: Not Ready
 Yellow: District
 Blue: Will be ready in a week

Public hospitals ready: RHUH & Baalbek Governmental Hospital, and Bouar Governmental Hospital, Halba Governmental Hospital, Bshareh Governmental Hospital, Tripoli Governmental hospital, bint Jbeil Governmental Hospital, Mashghara Governmental Hospital, Nabatieh Governmental Hospital, Hermel Governmental Hospital
 Public hospitals in the process of becoming ready: as Al Hrawi Hospital, Fattouh hospital, Saïda Governmental Hospital.

Laboratories Designated by the Ministry of Public Health to Conduct COVID-19 Tests

Name of Laboratory	Location
Rafic Hariri University Hospital	Beirut
AUB	Beirut
Merieux / USJ	Beirut
Saint Georges Roum	Wata A'mara Shalhoub
Bouar Governmental Hospital	Kesrouane
Rizk LAU	Beirut
Notre Dames de Secours	Byblos
Baalbek Governmental Hospital	Baalbek
New Mazloun Hospital	Tripoli
Haykel Hospital	Koura
Serhal Hospital/ Hopital Dr. S. Serhal	Metn
Hospital of Bhannes Hospitality Center for Charity Sisters	Metn
Lebanese Hospital Geitaoui	Beirut
Mount Lebanon Hospital	Baabda
Saint George Hospital University Medical Center	Baabda
Ain Wazain Hospital	Chouf

You can find this report on drm.pcm.gov.lb or on our social media platforms: @DRM_Lebanon

Measures Introduced in Dealing with the Pandemic of COVID-19

Ministry of Public Health

- Issued a [daily report](#) on new cases and the status of existing cases in government and private hospitals.
- Implemented the health measures agreed upon within the Lebanese government's plan to return Lebanese expatriates during flights and at the airport, and defined the required isolation procedures according to the health status of expatriates in coordination with the Committee for the Follow up on Coronavirus Preventive Measures and Procedures, the Ministry of Foreign Affairs, the Ministry of Public Works and Transport, the General Directorate of Public Security and Middle East Airlines.
- Continues to equip government hospitals and others.
- Field examination of the hospitals and laboratories designated by the ministry to deal with the emerging coronavirus.
- Following up on the health situation of expatriates who have returned to Lebanon.
- Conducting and following up on conducted PCR tests for citizens in various Lebanese regions, especially in Bcharreh.

Lebanese Red Cross

- 678 new suspected cases were transferred to hospitals (29 new cases)
- 862 trained paramedics
- 520 volunteers
- 35 trained ambulance centers

Details on the Lebanese Red Cross' [official website](#)

Security services (Internal Security Forces, General Security, State Security, Army, General Directorate of Civil Defense)

- The Lebanese army and other security services implemented strict measures on all Lebanese territory to ensure public mobilization.
- The army closed 298 shops, dispersed 38 public gatherings. The army also supported a number of municipalities in implementing precautionary measures. The army also shared the names of the 115 blocked roads by the municipalities.
- General Security Forces followed up on the airport's set regulations for the return of Lebanese expatriates to their homeland and tracked potential cases in various Lebanese regions and ensured that they're adhering to the terms of home isolation. In addition, they dispersed several gatherings and aided several municipalities in issuing several written warnings to institutions and individuals that did not adhere to the [decisions of the Council of Ministers](#).
- ISF issued 674 written warnings, of which 456 directed at cars that violated the decision of the Ministry of Interior and Municipalities, 33 warnings were directed at institutions and 185 were directed at individuals who violated the [decisions of the Council of Ministers](#). ISF also followed up on three individuals staying in home isolation. So far, ISF has issued 11,545 written warnings since March 21.
- The General Directorate of Civil Defense carried out 14 transportation missions for dialysis patients to hospitals based on the Minister of Interior and Municipalities Decision No. 479/2020. It also prepared 72 personnel and 16 ambulances, to interfere, when necessary, and transport those infected with the emerging coronavirus. It also carried out sterilization missions in public and private areas that were excluded from the decision to close.
- State Security Forces visited different Lebanese regions and closed a number of shops. The forces also issued warnings institutions that violated the public mobilization decision and dispersed public gatherings.

Ministry of Foreign Affairs

- The ministry was informed that several expatriates donated money to governmental hospitals and the medical staff.
- The ministry is working on resolving students' issues with transferring money from Lebanon to the country they reside in.
- The Ministry of Foreign Affairs continues to communicate daily with Lebanese missions and external parties regarding the provision of medical assistance.
- The ministry is following up on the process of collecting information from expatriates who wish to return to Lebanon.
- The ministry is working in direct coordination with the Committee for the Follow up on Coronavirus Preventive Measures and Procedures, the Ministry of Public Health, the General Directorate of General

Security, the General Directorate of Civil Aviation and the Middle East Airlines to ensure that all agreed procedures are being implemented when it comes to returning Lebanese expatriates.

- Note:

Website for Lebanese expatriates who wish to return to Lebanon: <https://mfa.gov.lb/arabic/return-to-lebanon>

Website for student expatriates: <https://mfa.gov.lb/arabic/students-abroad>

Ministry of Public Works and Transport

- A Finnish military plane with the soldiers of the International Emergency Forces lands at 18:10 and is expected to leave at 19:00.
- A Safadi private plane arrived from Lagos at 2:00 with 12 Lebanese citizens on board.
- A private plane arrived from Dubai at 13:00 with 8 Lebanese citizens on board.
- A private plane arriving from Doha at 19:45 with one Lebanese citizen on board.
- A MEA private plane arrives from Burkina Faso at 18:05 with two Lebanese citizens aboard.
- A Safadi private plane arrived from Dubai at 10:30 am with a single Lebanese citizen on board.
- A MEA private plane arrives from Algeria at 17:30 with two Lebanese citizens on board.
- A Safadi private plane arrived from Istanbul at 11:30 with 10 Lebanese citizens on board.
- A private plane arrives from Africa at 20:45 with 6 Lebanese citizens on board.
- A Safadi company plane arrives from Egypt at 17:30 with 6 Lebanese citizens on board.
- A Qatar cargo plane arrives at 20:20 and departs 21:30.
- A Qatari cargo plane loaded with livestock arrives at 22:30 and departs at 20:20.
- An Emirates cargo plane loaded with various goods arrived at 10:30 and departed at 11:30.
- Beirut Port: Three ships arrived from Valencia, Alexandria and Latakia to unload and load various goods. Three ships left to Egypt and Turkey loaded with containers.
- Tripoli Port: Departure of a ship to the Zahrani Port loaded with fuel.
- No entry or exits has been recorded in other ports.

Note:

- Before allowing any ship to enter the port, the entire crew on the ship are examined by the Ministry of Public Health to ensure that there are no coronavirus cases on board.
- The airport: All arrivals through Rafic Hariri International Airport are subject to health and security measures approved in the plan for the return of Lebanese expatriates by the Ministry of Public Health, the General Directorate of General Security and the General Directorate of Civil Aviation.

Ministry of Interior and Municipalities

- The ministry is following up on the issued Decree No. 479 on April 5, 2020, stating the new regulation allowing the mobilization of cars and trucks on specific days of the week according to their number plates.
- Following up on the implementation of the decision to extend the state of public mobilization until 12/4/2020 in accordance with Cabinet Resolution No. 1 dated 3/26/2020.

Ministry of Social Affairs

- The ministry is addressing the repercussions of the coronavirus. Within the first stage of the plan, the ministry collects all the data available through a national program in aim of supporting the poor families, the disabled and those with special needs, and citizens who lost their jobs due to the crisis. Information is collected in coordination with the Presidency of the Council of Ministers and the municipalities.
- Announced 1766 as its hotline to receive citizen complaints.
- The Ministry is supervising the implementation of the first phase of the social emergency response plan, through which assistance will be provided to about 65,000 families. The Lebanese army will distribute these aids to various Lebanese regions starting Tuesday 14/4/2020.

Actions Taken at the Governorate and Municipal Level

Isolation centers approved by The Committee for the Follow up on Coronavirus Preventive Measures and Procedures

Friday, April 10, 2020

The committee responsible for specifying potential isolation centers includes an officer from the General Secretariat of the Supreme Council of Defense, a medical doctor in the army, an engineer from the army, and a representative from the Order of Nurses in Lebanon.

The committee aims to inspect possible isolation centers in coordination with the concerned governorates and municipalities.

Governorate	Number of isolation centers
Mount Lebanon	16
North	2
South	4
Akkar	11
Bekaa	10
Total	43

Governorate	Level of commitment to the decision to close all businesses	Sectors violating closure decision
Beirut	90%	Commercial stores, violating the car mobility decision
North	80%	Public gatherings, violating the car mobility decision, commercial stores
Akkar	90%	violating the car mobility decision, gatherings
Baalbek-Hermel	90%	violating the car mobility decision, cafes, commercial stores
Bekaa	90%	Violating the car mobility decision.
Mount Lebanon	90%	violating the car mobility decision, commercial stores
South	93%	violating the car mobility decision, Motorcyclists' gatherings
Nabatieh	93%	Gatherings, violation of the car mobility decision

Objectives of the National Operations Room

The National Operations Room works on coordinating efforts in order to accomplish the following goals:

First Objective: Control the spread of the virus through the application of precautionary measures, minimize direct contact among people, and increase awareness of the population and access to information.

Second Objective: Ensure the continuity of services at the national level and adopt and encourage remote working.

Third Objective: Increase health sector capacity by continuously assessing available resources, gaps and look for funding and technical assistance to build up capacities and case management.

General Directions and Recommendations

- Implement the decisions issued by the Presidency of the Council of Ministers at the level of public and private institutions and municipalities.

Risks that Might Result in the Rapid Spread of the Virus

- Lack of adherence to the medical advisories.
- Disrespecting to compulsory home quarantine.
- The spread of the virus in crowded places.
- Allowing gatherings to take place

You can find this report on drm.pcm.gov.lb or on our social media platforms: [@DRM_Lebanon](https://twitter.com/DRM_Lebanon)

-
- Stay at home and don't go out unless it is necessary.
 - Frequently wash hands and follow all safety measures set by the Ministry of Public Health.
 - Avoid crowded places and social contact and commit to a safe distance between individuals.
 - Seek medical care if you feel fever, cough and difficulty of breathes. Call the Ministry of Public Health hotline 1214 or 01-594459