



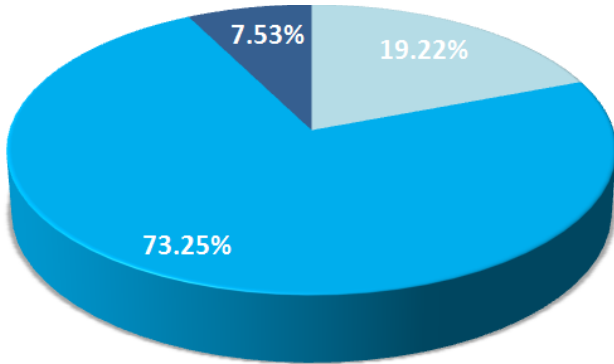
Lebanon National Operations Room Daily Report on COVID-19 April 1, 2020

Wednesday, April 1, 2020

Report #14

Time Published: 18:00

Cases per day

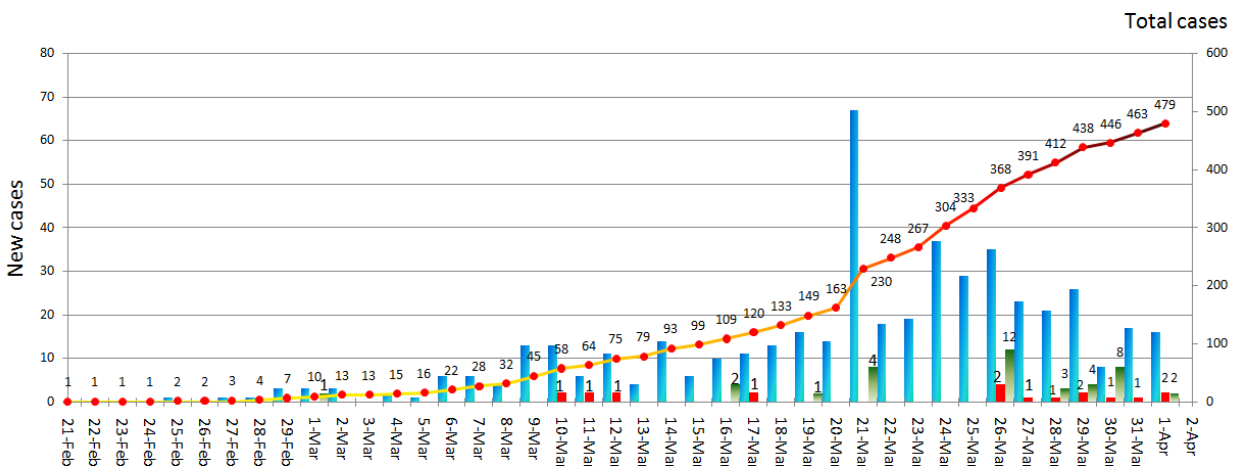


■ Asymptomatic
 ■ Mild/Moderate
 ■ Severe/Critical

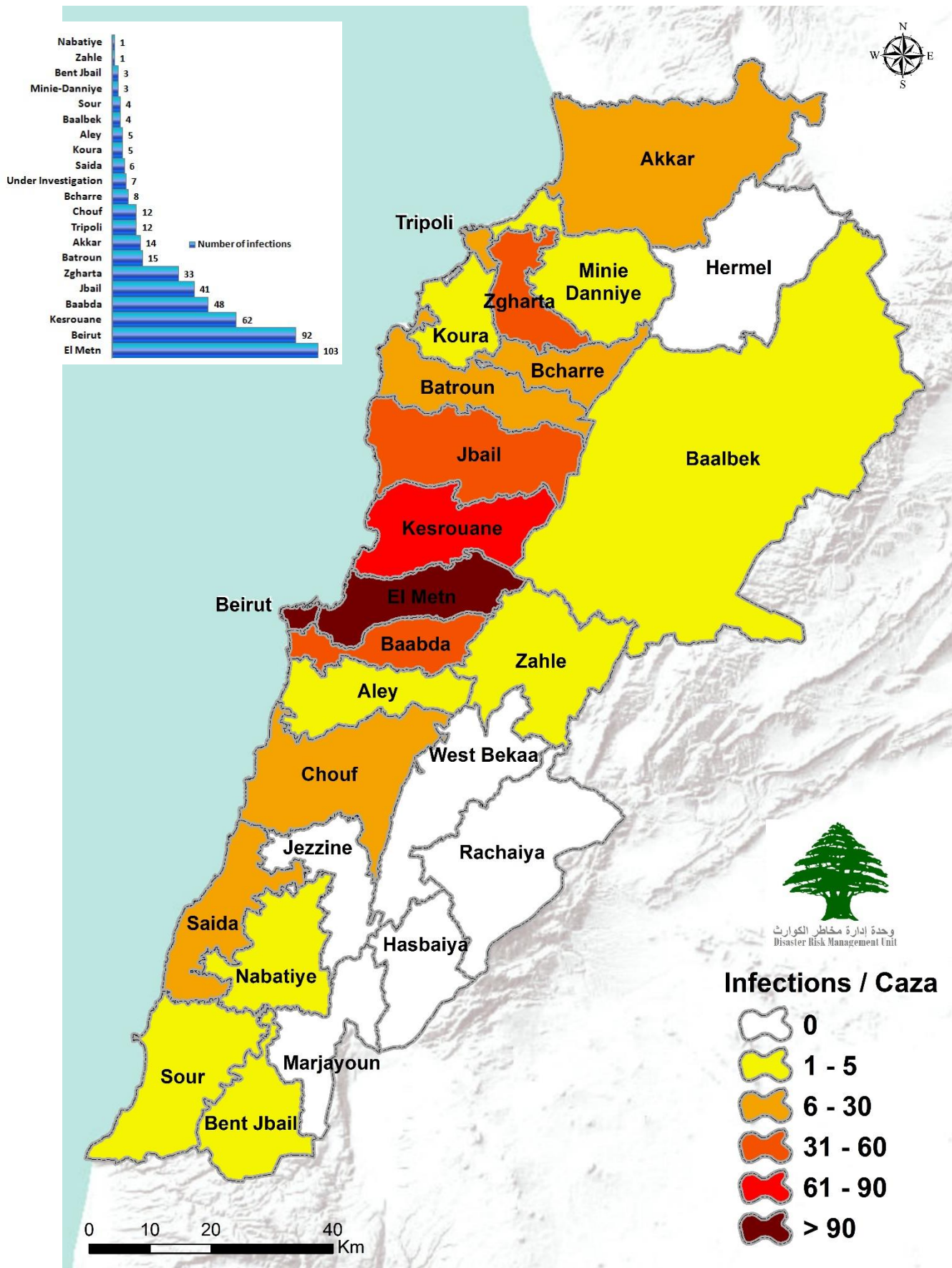
Number of registered cases since Feb. 21	479
New cases	16
Total deaths	14
Total recoveries	37
Total conducted tests	7289

Cases per day

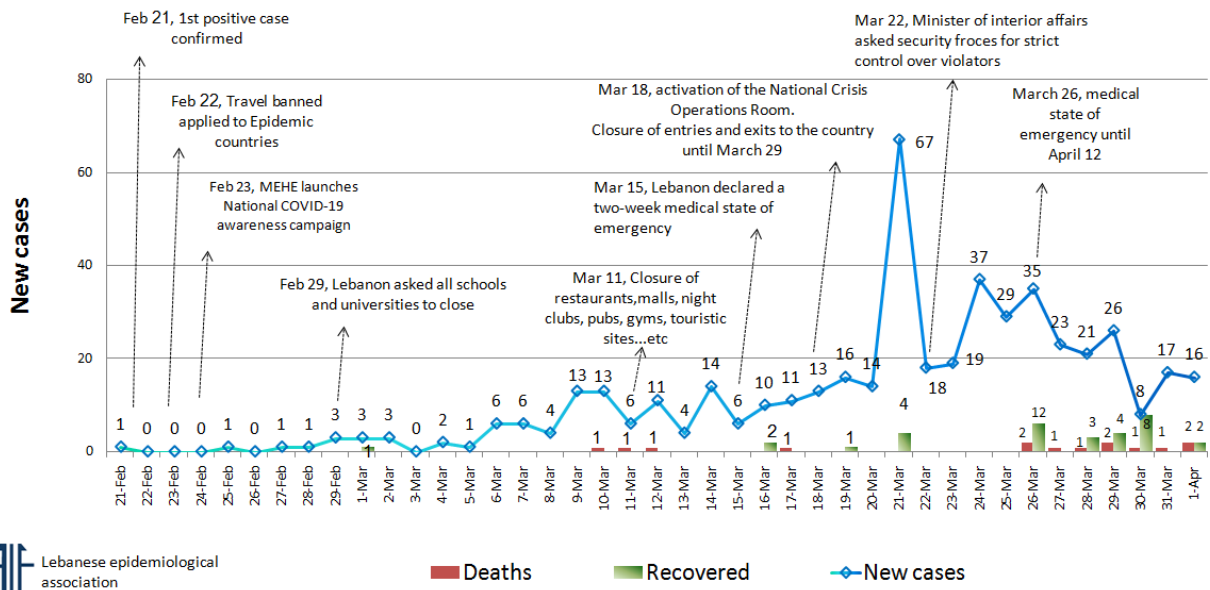
■ New cases
 ■ Deaths
 ■ Recovered
 —●— Total cases



Number of Cases by Location

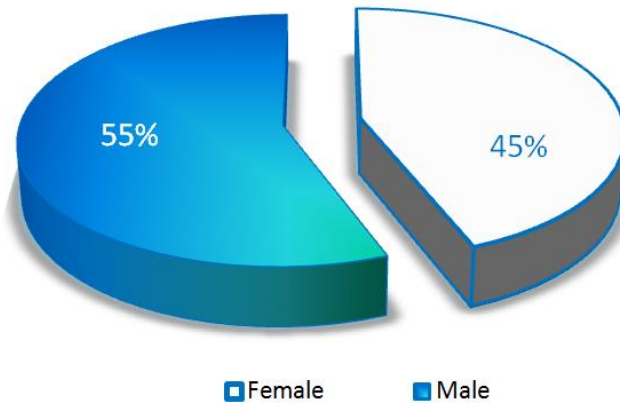


Trend of cases vis-à-vis precautionary measures introduced by Government



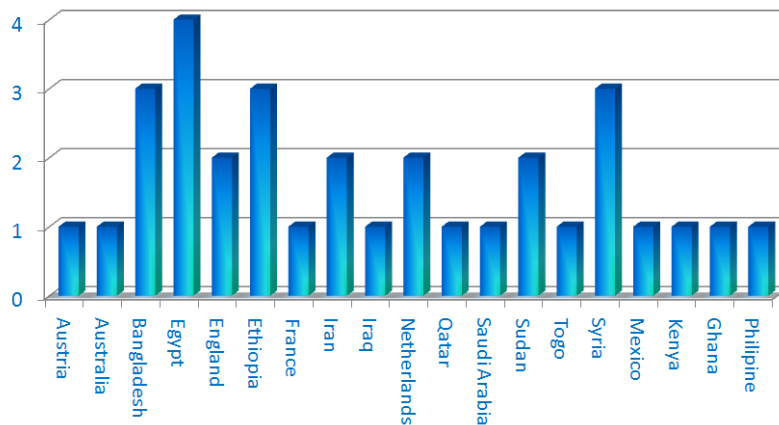
AIE Lebanese epidemiological association

Cases by Gender

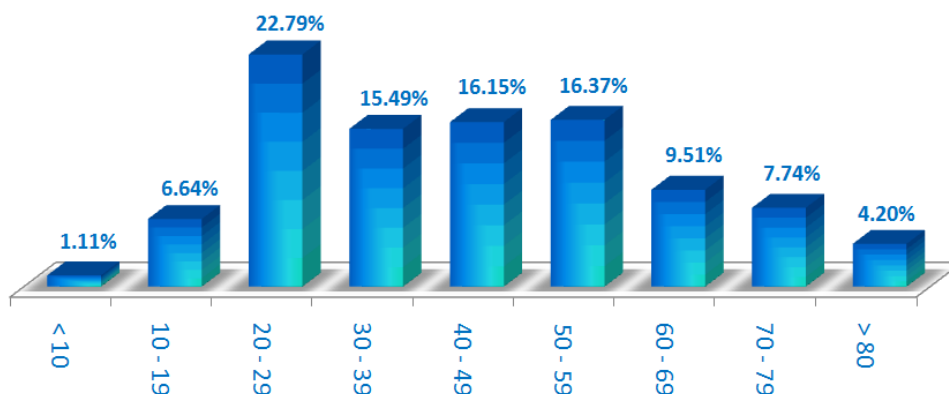


Distribution of cases by nationality

Lebanese: 447 Cases out of 479 (93%)



Distribution of cases by age group (%)



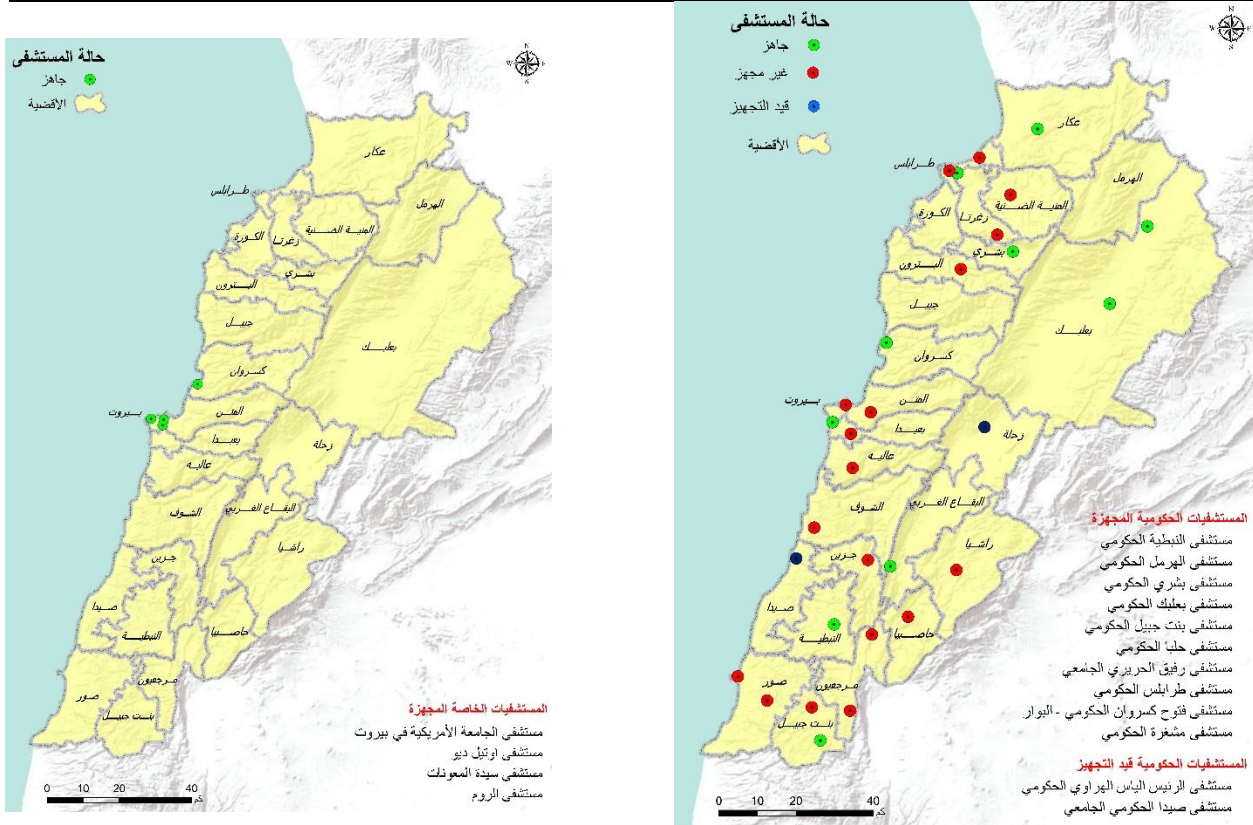
Total Artificial Respirators in Public and Private Hospitals

	Public Hospitals	Private Hospitals	Total
Children	42	237	279
Adults	123	783	906
Total	165	1020	1185

Existing available beds in emergency units and ICUs (both in public and private hospitals)

	Private Hospitals	Public Hospitals	Total
Number of beds in emergency units	878	215	1093
Number of beds in ICU	1972	336	2308
Total number of beds (of all kinds)	12749	2446	15195

Level of Preparedness of Public and Private Hospitals



Status of Private Hospitals (AUBMC, Hotel Dieu Hospital, Jbel Maounat Hospital, and Al Roum Hospital)
 Green: Ready
 Yellow: District

Status of Public Hospitals
 Green: Ready
 Red: Not Ready
 Yellow: District
 Blue: Will be ready in a week

Public hospitals ready: RHUH & Baalbek Governmental Hospital, and Bouar Governmental Hospital. Halba Governmental Hospital, Bshareh Governmental Hospital, Tripoli Governmental hospital, bint Jbeil Governmental Hospital, Mashghara Governmental Hospital, Nabatieh Governmental Hospital, Hermel Governmental Hospital

Public hospitals in the process of becoming ready: as Al Hrawi Hospital, Fattouh hospital, Saida Governmental Hospital.

Laboratories Allowed to Conduct COVID-19 Tests (Ministry of Public Health)

Name of Laboratory	Location
Rafic Hariri University Hospital	Beirut
AUB	Beirut
Merieux / USJ	Beirut
Saint Georges Roum	Wata A'mara Shalhoub
Bouar Governmental Hospital	Kesrouane
Rizk LAU	Beirut
Notre Dames de Secours	Byblos
Baalbek Governmental Hospital	Baalbek

Objectives of the National Operations Room

The National Operations Room works on coordinating efforts in order to accomplish the following goals:

First Objective: Control the spread of the virus through the application of precautionary measures, minimize direct contact among people, and increase awareness of the population and access to information.

Second Objective: Ensure the continuity of services at the national level and adopt and encourage remote working.

Third Objective: Increase health sector capacity by continuously assessing available resources, gaps and look for funding and technical assistance to build up capacities and case management.

You can find this report on drm.pcm.gov.lb or on our social media platforms: @DRM_Lebanon

Measures Introduced in Dealing with the Pandemic of COVID-19

Ministry of Public Health

- Issued a [daily report](#) on new cases and the status of existing cases in government and private hospitals.
- Continues to equip government hospitals in aim of raising bed capacities.
- The Ministry of Public Health announced that the number of government hospitals that are ready to receive new cases infected with the Corona virus has reached ten, including:
 - Rafic Hariri University Hospital
 - Nabatieh Governmental Hospital
 - Machghara Governmental Hospital
 - Baalbek Governmental Hospital
 - Hermel Governmental Hospital
 - Bouar Governmental Hospital
 - Becharre Governmental Hospital
 - Bint Jbeil Governmental Hospital
 - Tripoli Governmental Hospital
 - Halba Governmental Hospital
- The ministry issued a circular specifying how death bodies should be transported in case they were affected with COVID-19.

Lebanese Red Cross

- 468 new suspected cases were transferred to hospitals (11 new cases)
- 760 trained paramedics
- 520 volunteers
- 31 trained ambulance centers

Details on the Lebanese Red Cross' [official website](#)

Security services (Internal Security Forces, General Security, State Security, Army, General Directorate of Civil Defense)

- The Lebanese army and other security services implemented strict measures on all Lebanese territory to ensure public mobilization.
- The army closed 130 shops, dispersed 25 public gatherings. The army also supported 4 municipalities in implementing precautionary measures and opening blocked roads in the North.
- General Security Forces tracked potential cases in various Lebanese regions and ensured that they're adhering to the terms of home isolation. In addition, they dispersed several gatherings and aided several municipalities in issuing several written warnings to institutions and individuals that did not adhere to the [decisions of the Council of Ministers](#). The forces also aided members of the UNHCR on checking the situation of camps.
- ISF issued 294 written warnings to institutions and individuals that violated the [decisions of the Council of Ministers](#).
- The General Directorate of Civil Defense sterilized a number of public and private areas and institutions that were excluded from the public mobilization decision and examined the temperature of passengers and assured that citizens are adhering to quarantine.
- State Security Forces collected information from various Lebanese regions, closed a number of commercial stores in the North and Mount Lebanon because they not adhere to health standards and issued a number of warnings to companies that did not close.

Ministry of Foreign Affairs

- The Ministry of Foreign Affairs issued Circular No. 5/1610 on 30/3/2020, in which it requested the Lebanese diplomatic and consulate missions to share the number of Lebanese expatriates who have registered their names on the evacuation lists.
- The ministry also issued Circular No. 5/1612 on 30/3/2020, requesting all Lebanese missionaries to share their evacuation plan based on the number of Lebanese registered on their lists, provided that the plan includes risk assessment.
- Within the framework of developing a plan to return the Lebanese expatriates, the Minister submitted a detailed report to the Council of Ministers to discuss it and take the necessary decisions and measures. The ministry also completed the process of collecting information on Lebanese living abroad.

Ministry of Public Works and Transport

- A Kuwaiti cargo plane arrived at 12:05 to Beirut and left at 13:05.
- A DHL cargo plane arrived from Doha at 19:45 landing and is expected to leave at 20:45.
- A Qatari cargo plane arrived to Beirut at 19:45 and is expected to depart at 20:45.

You can find this report on drm.pcm.gov.lb or on our social media platforms: [@DRM_Lebanon](#)

- Two Turkish cargo planes from Istanbul are expected to arrive to Lebanon at 23:15 and to leave at 00:45.
- - A private health evacuation plane landed from Austria to transport a patient to Geneva at 14:20 and departed at 15:00.
- - A private plane is expected to arrive from Africa with a Lebanese citizen infected with Coronavirus at 23:45 at to depart at 00:30.
- Beirut Port: Two ships entered.
- Jiyeh port: One Romanian ship loaded with fuel arrived to Lebanon.
- Other Ports: No entry or departure was recorded in other ports.
- **Note:** Before allowing any ship to enter the port, the entire crew on the ship are examined by the Ministry of Public Health to ensure that there are no coronavirus cases on board.

Others

- The Committee for the Follow up on Coronavirus Preventive Measures and Procedures is overseeing the process of examining potential isolation centers in various Lebanese regions through a specialized committee.
- The Social Workers' Syndicate in Lebanon assigned 25 regional coordinators and 250 social workers to intervene in various governorates and help monitor quarantined cases, with the support of the Ministry of Public Health, governorates, and municipalities.

Actions Taken at the Governorate and Municipal Level

Governorate	Total number of individuals in home isolation	level of commitment to circulars by governorates
		General Percentage
North	201	80%
Akkar	346	90%
Baalbek-Hermel	42	78%
Bekaa	52	90%
Mount Lebanon	354	90%
South	89	90%
Nabatieh	33	90%

Governorate	Level of commitment to the decision to close all businesses	Sectors violating closure decision
Beirut	80%	Traffic, commercial stores, gatherings in front of ATM machines
North	80%	Traffic, protest, gatherings in front of ATM machines
Akkar	75%	Gatherings in front of ATM machines and individuals not abiding by the public mobilization decision
Baalbek-Hermel	88%	Gatherings in front of ATM machines, gathering in front of supermarkets, gatherings in shopping centers
Bekaa	90%	Gatherings in front of ATM machines
Mount Lebanon	90%	Gatherings in front of ATM machines, commercial stores
South	85%	Public gathering
Nabatieh	80%	Gatherings in front of ATM machines, traffic, gatherings in shopping centers

General Directions and Recommendations

- Implement the decisions issued by the Presidency of the Council of Ministers at the level of public and private institutions and municipalities.
- Stay at home and don't go out unless it is necessary.
- Frequently wash hands and follow all safety measures set by the Ministry of Public Health.
- Avoid crowded places and social contact and commit to a safe distance between individuals.
- Seek medical care if you feel fever, cough and difficulty of breathes. Call the Ministry of Public Health hotline 1214 or 76/592699

Risks that Might Result in the Rapid Spread of the Virus

- Lack of adherence to the medical advisories.
- Disrespecting to compulsory home quarantine.
- The spread of the virus in crowded places.
- Allowing gatherings to take place