



Monday.23 August.2021

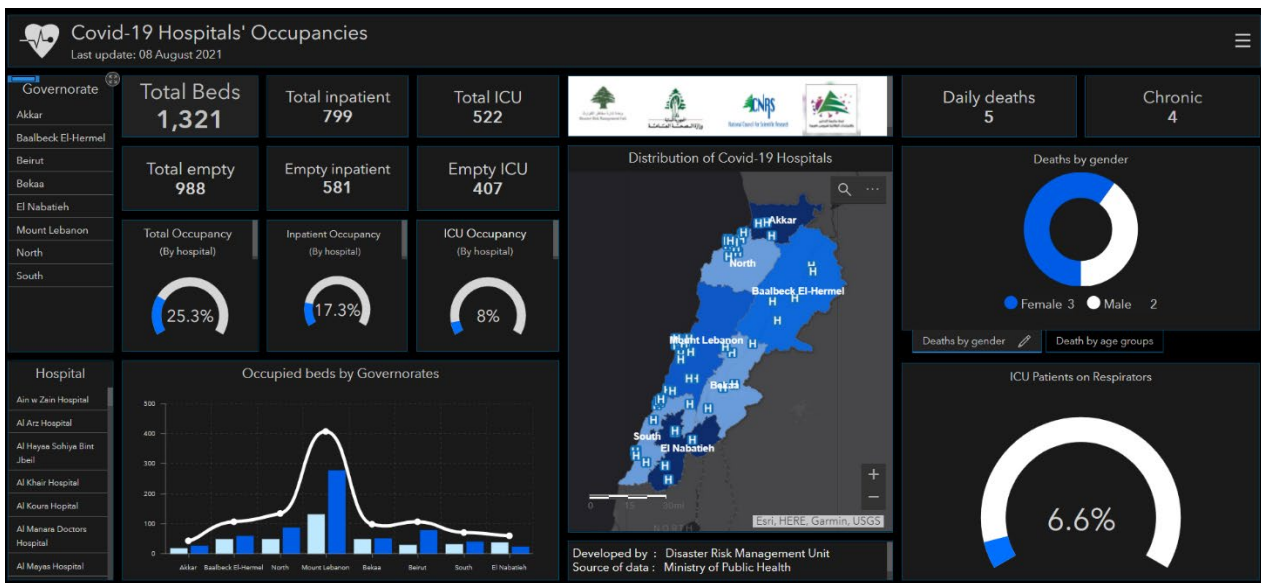
Report #493

Time Published: 8:00 PM

Cases Situation				Sat	Sun	Cumulative	Covid-19 Beds Capacity			Sat	Sun	
Cases in Lebanon				1,173	624	592,780	Hospitalized Cases			464	481	
Local Cases				1,135	624	584,927	Cases in ICU			212	225	
Expats Cases				38	0	7,853	Ventilated Cases			52	51	
Deaths Cases				3	3	8,014	Testing			Sat	Sun	
Health Sector Cases				0	0	2,724	Cumulative PCR's			21,365	12,941	
Vaccination	Last 24 hours	Cumulative	Per /Population	Lebanon Status compared to the World		 		COVID-19 tests for residents within 24 hrs.			16,865	8,691
				Total Cumulative 592,780 212,909,828 Total Deaths 8,014 4,449,356 Deaths percentage 1.35% 2.08% Total recoveries 546,444 190,601,639		COVID-19 Tests at Airport within 24 hrs.			4,128	-	Total Tests since 21.2.2020	
Registered				10,211	2,361,554	34.6 %	Total Recoveries			546,444		
1st Dose				2,572	1,364,078	28.6 %	Deleted Status due to its recurrence			25		
2nd Dose				1,345	1,119,854	23.5 %	positive examinations /100 in the past 14 days			8.5 %		

Ref: Ministry of Public Health Data

Occupancy rate of COVID-19 Beds and Availability



For daily information on all the details of the bed's distribution availability for Covid-19 patients among all governorates and according to hospitals, kindly check the dashboard link:

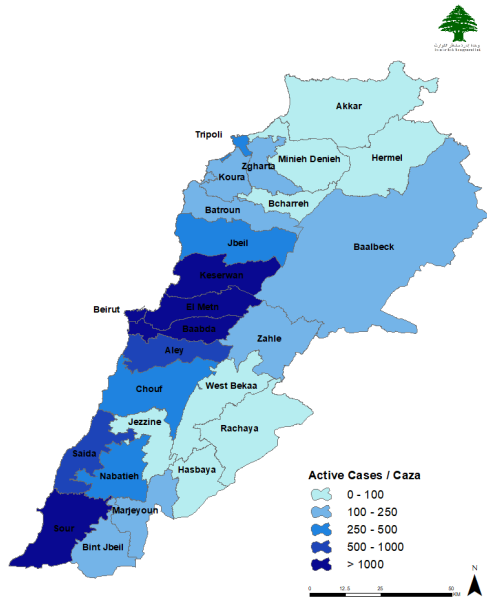
Computer: <https://bit.ly/DRM-HospitalsOccupancy-PCPhone>:<https://bit.ly/DRM-HospitalsOccupancy-Mobile>

Beirut	217	Maten	270	Aleyh	63	Tripoli	70	Akkar	21	Nabatieh	91
Ain Mraisseh	1	Borj Hammoud	28	Naameh	3	Jounieh Sarba	2	Halba	3	Hlaliyeh	2
Aub	2	Nabaa	2	Chhim	11	Jounieh Kaslik	1	Daoura	1	Qiyaa	1
Ras Beyrouth	5	Sinn Fil	16	Mazboud	3	Zouk Mkayel	4	Kfar Harra	1	Haret Saida	5
Qreitem	1	Jisr Bacha	1	Dalhoun	1	Haret El Mir	1	Aayoun	1	Miyeh Ou Miyeh	3
Raoucheh	3	Jdaidet Matn	13	Daraiya	8	Zouk Mosbeh	8	Nahr El Bared	7	Ain El Heloueh	5
Hamra	10	Baouchriyeh	7	Ketermaya	3	Adonis	4	Michmich	1	Aabra	8
Ain Tineh	3	Daoura	3	Aanout	3	Jounieh Haret Sakhr	2	Rahbeh	1	Bqosta	3
Msaitbeh	3	Raouda Baouchriyeh	5	Barja	1	Jounieh Sahel Aalma	1	Ouadi Ej Jamous	1	Ghaziyyeh	11
Ouata Msaitbeh	1	Sadd Baouchriyeh	5	Dibbiyeh	2	Tabarja	2	Qbaiyat	1	Maghdoucheh	1
Mar Elias	4	Sabtiyeh	5	Jiyeh	2	Adma Oua Dafneh	1	Others	4	Darb Es Sim	1
Tallet Khayat	2	Deir Mar Roukoz	2	Jadra	3	Aaqabeh	2	Bcharrieh	3	Kharayeb	2
Zarif	3	Dekouaneh	22	Ouadi Ez Zayni	1	Aajaltoun	3	Bqerqacha	2	Insariyeh	4
Mina Hosn	1	Mkalles	4	Meghraiga	1	Ballouneh	4	Bqaa Kafra	1	Sarafand	5
Mazraa	9	Antelias	7	Ouardaniyeh	1	Jaaita	3	Mineh Duncih	7	Saksakiyeh	1
Borj Abou Haidar	5	Jail Dib	11	Zaarouriyeh	1	Ghazir	2	Sir Ed Danniyyeh	1	Merouaniyeh	2
Basta Faouqa	3	Naqqach	3	Bsaba	1	Kfar Hbab	1	Kfar Habou	1	Mazraat Mseileh	1
Tariq Jdideh	18	Naqqach Jdideh	1	Deir El Qamar	1	Ghosta	2	Deir Nbouh	1	Aanqoun	1
Ras Nabaa	7	Zalqa	12	Majdel El Meouch	1	Maarab	2	Others	4	Kfar Hatta	1
Basta Tahta	2	Byaqout	1	Mghayreh	2	Batha	1	Zahleh	26	Others	34
Geitawi	1	Dbayeh	3	Baaqline	4	Kfour	4	Zahleh El Midane	3	Tyre	278
Achrafiyeh	15	Deir Aaoukar	2	Beqaata	2	Hsayn	1	Zahleh Er Rassiyeh	1	Sour	56
Furn Hayek	1	Mansouriyeh	22	Zaarour	1	Rayfoun	2	Zahleh El Maallaqa	2	Sour El Bass	13
Others	117	Daychouniyeh	3	Bater	2	Aachqout	3	Fourzol	1	Sour Ras El Ain	1
Baabda	276	Fanar	13	Barouk	3	Faytroun	4	Qaa Er Rim	1	Bahr Ech Chemali	1
Chiyah	20	Ain Saadeh	5	Others	2	Raachine	1	Ksara	1	Sour Er Rachidiyeh	10
Jnah	26	Ain Najm	1	Aleyh	115	Broummana	1	Taalabaya	3	Sour Maachouq	1
Ouzaa	4	Roumieh	6	El Aamroussiyyeh	2	Ouata Ej Jaouz	1	Saadnayel	1	Borj Ech Chemali	20
Bir Hassan	11	Bqennaya	2	Hay Es Sellom	26	Hrajel	4	Bouarej	1	Batoulay	5
Mahatet Sfair	11	Bsalim	5	Haret Aamroussiyyeh	4	Faraya	2	Majdel Aanjar	1	Deir Qanoun El Ain	1
Ghbayreh	13	Nabay	1	El Qoubbeh	1	Others	1	Riyay	4	Smaiyeh	1
Ain Roummaneh	14	Mtayleb	5	Khaldeh	11	Nabatieh	138	Aali En Nahri	5	Jouaiya	9
Furn Chebbak	16	Rabiyyeh	2	Choueifat El Oumara	8	Nabatiyeh Et Tahta	4	Others	2	Mazraat Mechref	1
Haret Hreik	22	Beit Kekko	1	Aaramoun	20	Mazraat Kfar Jaouz	2	Beqaa Gharby	16	Aaytit	5
Laylakeh	8	Elissar	1	Bchamoun	14	Kfar Roummane	2	Machghara	6	Yanouh	1
Borj Brajneh	25	Raboueh	3	Blaybel	1	Choukine	2	Ain Et Tineh	4	Deir Aames	2
Mreijeh	10	Beit Ech Chaar	1	Bsous	4	Habbouch	4	Baaloul	1	Barich	10
Raml Aali	1	Ain Aar	2	Aaley	5	Kfar Tibnit	4	Sohmor	2	Selaa	2
Tahouitat Ghadir	2	Mazraat Yachouaa	7	Kahhaleh	1	Ain Qana	1	Libbaya	1	Qana	9
Baabda	13	Beit Chabab	4	Ain Er Roummaneh	1	Jarjouaa	1	Others	2	Maarakeh	10
Hazmiyeh	13	Qornet Hamra	3	Aaytat	1	Houmine El Faouqa	2	Baalbek	48	Maaroub	6
Fayadiyeh	1	Broummana	4	Aabey	1	Roumine	1	Baalbek	20	Recheknanay	1
Hadath	44	Baabdat	1	Chanay	2	Houmine Et Tahta	2	Douris	1	Saddiqine	5
Louayzeh	1	Aaraar	1	Saoufar	1	Charqiyyeh	6	laat	2	Ain Baal	4
Jamhour Louaizeh	1	Beit Meri	5	Charoun	1	Toul	2	Nahleh	2	Bourgheliyeh	3
Bsaba	2	Monteverdi	3	Btater	2	Nmairiyeh	1	Maqneh	1	Bazouriyeh	22
Aabadiyeh	1	Mchaimmeh	1	Others	9	Harouf	1	Kfar Dane	1	Hanaouay	5
Ras Matn	5	Mrouj	2	Zagharta	26	Mayfadoun	2	Ras Baalbek Sahel	1	Deir Kifa	2
Qsaibeh	1	Qaaqour	4	Zgharta	3	Aadchit Ech Chqif	1	Haret Chmaliye H	1	Tayr Debba	9
Aaraiya	1	Btegrine	1	Kfar Dlaqous	1	Aabba	1	Laboueh	1	Chehabiyyeh	4
Zandouqa	1	Douar	3	Rachaaïne	8	Insar	6	Younine	2	Rmadiyeh	3
Hammana	1	Others	5	Kfar Hata	1	Qsaibeh	1	Deir El Ahmar	3	Toura	4
Qalaa	1	Tripoli	44	MEjdlaiya	2	Arnoun	1	Btedaai	1	Deir Qanoun Nahr	4
Btekhmay	1	Trablous Ez Zeitoun	2	Bsebaal	1	Kfar Sir	1	Yammouneh	1	Chehour	5
Others	6	Bab Er Raml	1	Karm Saddeh	1	Sir El Gharbiyeh	1	Bednayel	3	Kneisseh	1
Jbeil	27	Trablous El Qoubbeh	1	Miziara	4	Others	3	Temnine El Faouqa	1	Tayr Falsay	3
Jbayl	8	Mina Jardins	1	Harf	1	Bnt Jbeil	43	Serraïne Faouqa	1	Bedias	1
Mastita	1	Qalamoun	5	Miriata	1	Bent Jbayl	1	Nabi Chit	5	Aabbassiyeh	12
Blat	1	Beddaoui	2	Others	3	Ain Ebel	5	Bouday	1	Chabriha	3
Eddeh	2	Madineh Ej Jdideh	6	Batroun	7	Deir Ntar	1	Hermel	8	Chaaitiyeh	1
Aamchit	3	Others	26	Batroun	4	Others	10	Hermel	8	Malkiyet Es Sahel	2
Halate	3	Koura	14	Toula	1	Marjaayoun	13	Rachaiya	2	Qlaileh	5
Jedayel	1	Amioun	3	Aabdelli	1	Taybeh	4	Aaqabet Rachaiya	1	Qasmiyeh	1
Nahr Ibrahim	1	Kfar Aaqqa	3	Kfifane	1	Houla	2	Ain Aata	1	Mansouri	1
Mounsef	1	Bterram	1			Talloussa	2			Naqoura	6
Aannaya	1	Kfar Hazir	2			Markaba	2			Others	7
Rouaïss	1	Kousba	1			Meiss Ej Jabal	1			Jezzine	9
Yanouh	1	Kaftoun	1			Souaneh	2			Jezzine	3
Others	3	Kfar Hata	1			Hasbaiya	1			Lebaa	2
		Bohsas	1			Mimess	1			Choualiq	1
		Others	1							Kfar Jarra	1
										Qatrani	1

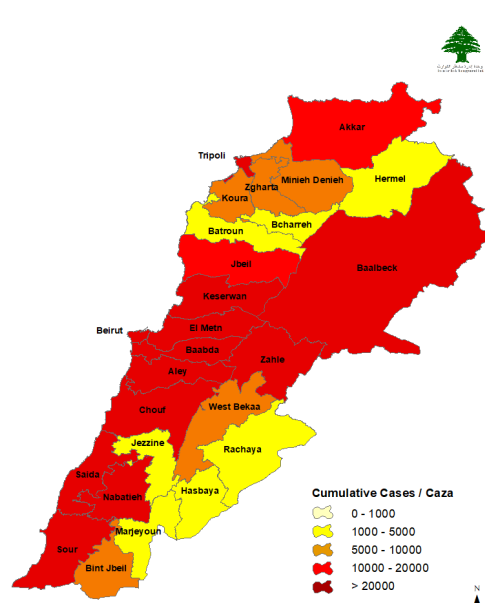
Others 76

Distribution of Active and Cumulative Cases

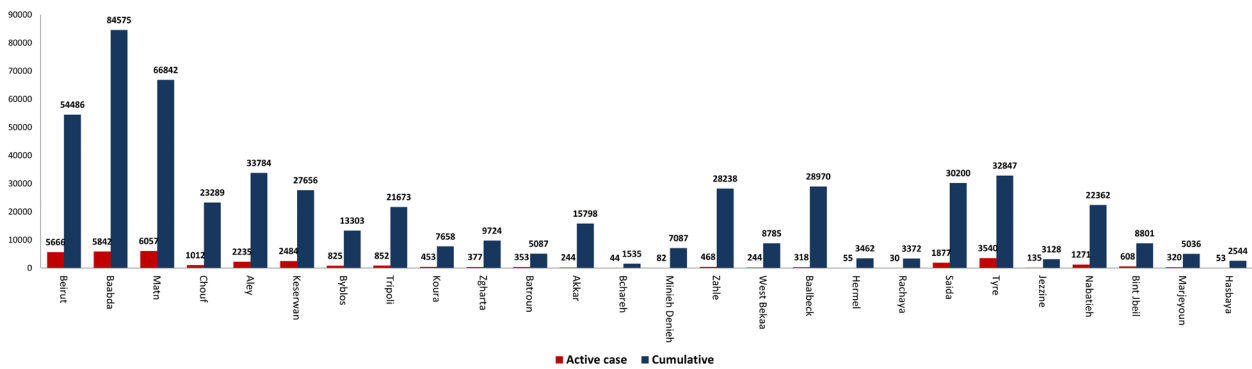
Distribution of Active Cases



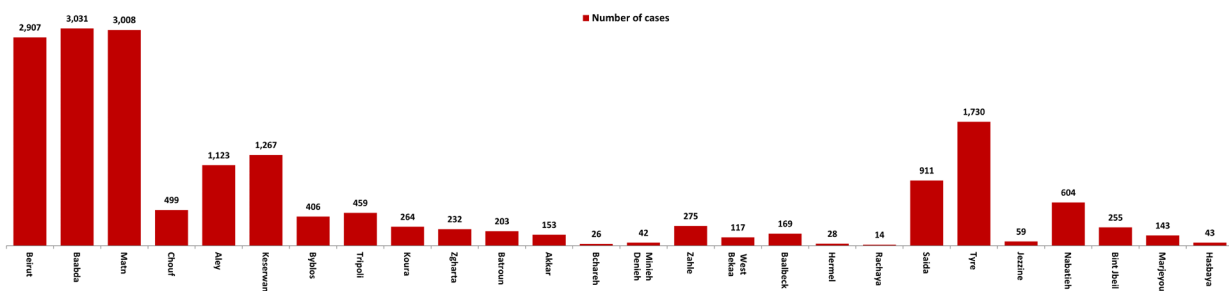
Distribution of Cumulative Cases



Number of Cases by Location



Number of cumulative cases for the last 14 days



Ref : Ministry of Public Health

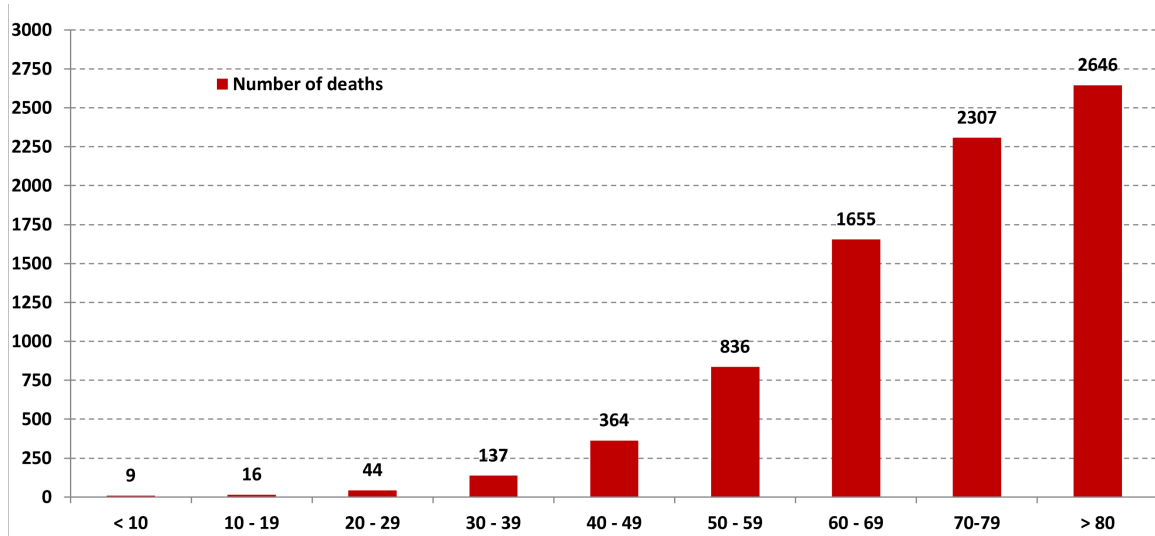
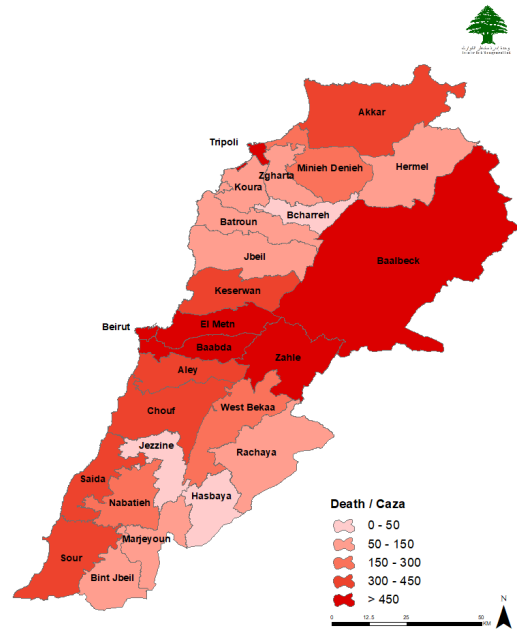
All reports and related decisions can be found at: <http://drm.pcm.gov.lb>

Or social media @DRM_Lebanon

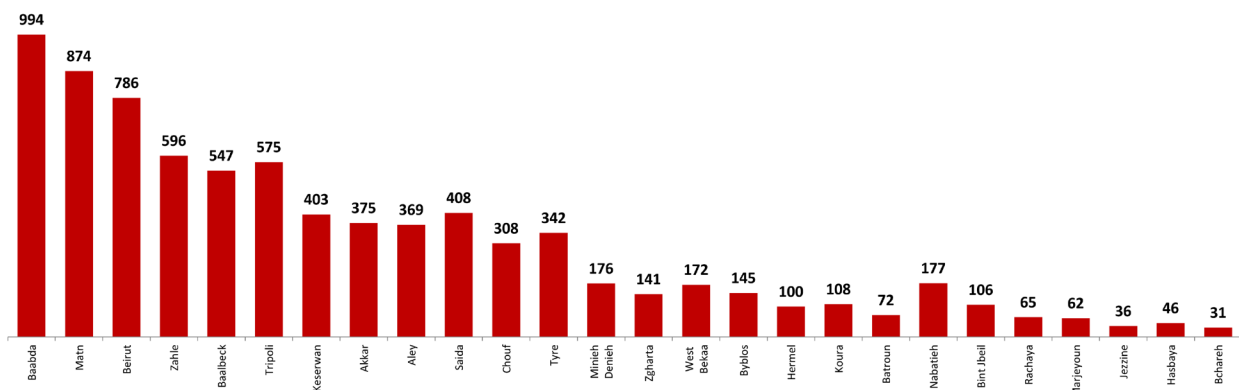
Distribution of Death Cases

Distribution of deaths during the past 24 hours

Hospital	Residence	Gender	Age	Chronic
22/08/2021				
RHUH	Tyre	Male	48	Yes
Rizk Hosp	Beirut	Male	67	No
Saida Gov Hosp	Jezzine	Male	72	Yes
23/08/2021				
RHUH	Baabda	Female	38	Yes
RHUH	Matn	Male	48	Yes
RHUH	Baabda	Male	62	Yes



Distribution of deaths by Governorate

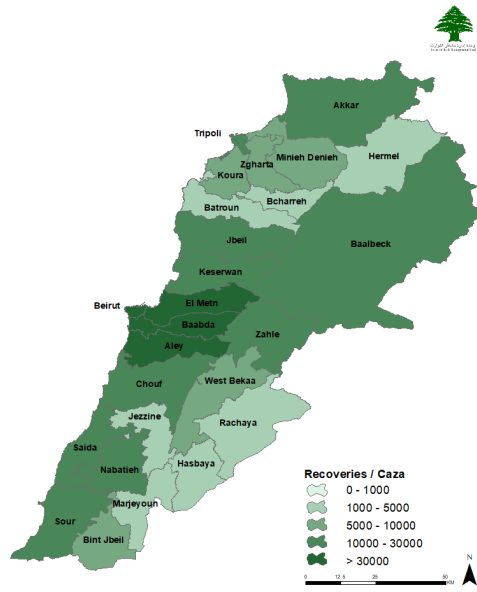


Ref : Ministry of Public Health

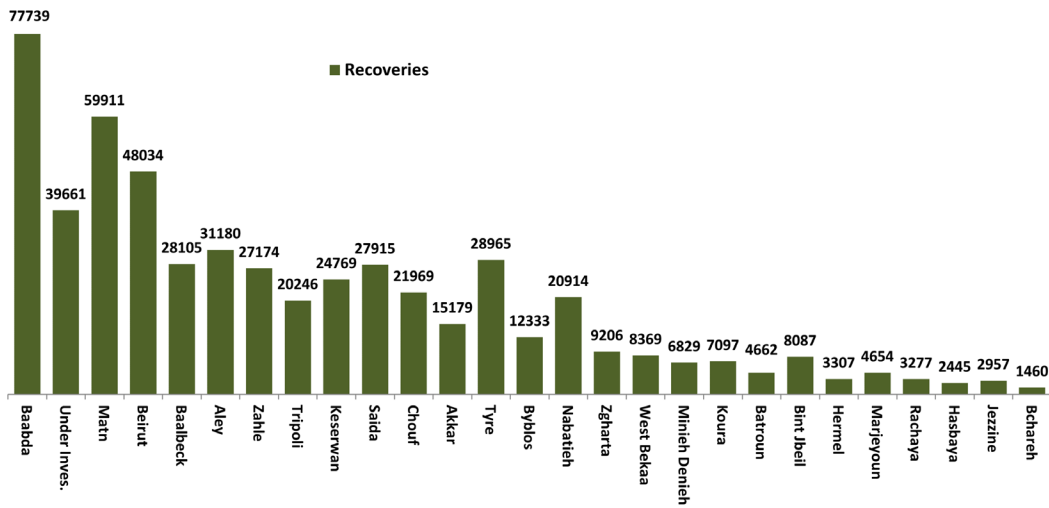
All reports and related decisions can be found at: <http://drm.pcm.gov.lb>

Or social media @DRM_Lebanon

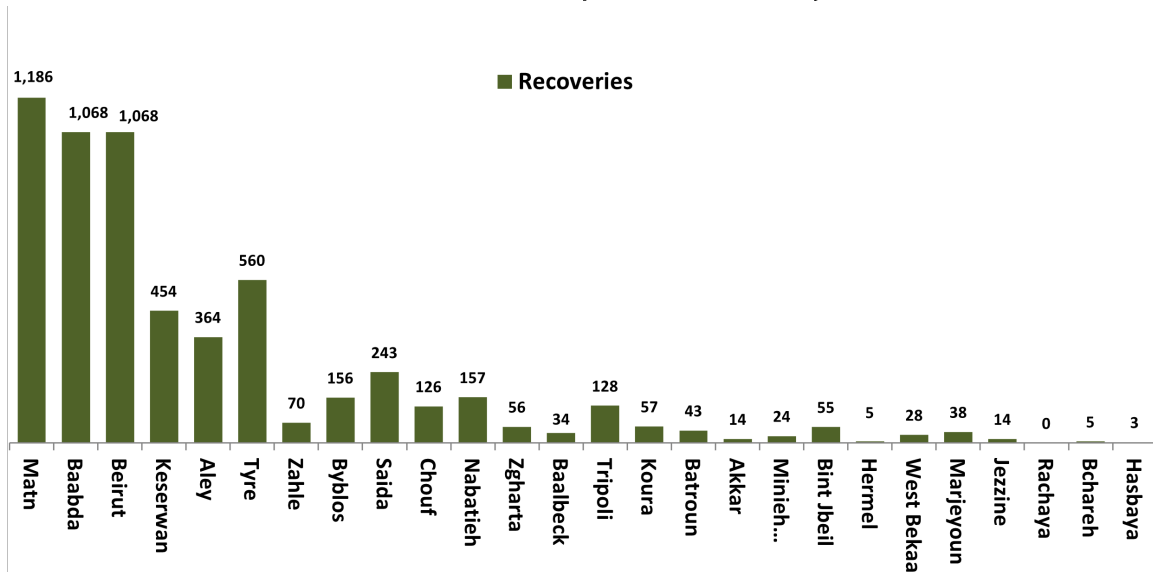
Distribution of Recoveries



Distribution of Recoveries per Casa



Distribution of Recoveries per Casa in the last 14 days



Ref : Ministry of Public Health

All reports and related decisions can be found at: <http://drm.pcm.gov.lb>

Or social media @DRM_Lebanon

The National Awareness Campaign on the Coronavirus Vaccine

للحصول على الرابط المناسب، أرسل كلمة موجاً رقم الهاتف التالي 06/669584 وستصلك لائحة بجميع الروابط.

طلب اللقاح في حالات إستثنائية

حالة صحة تتطلب أخذ اللقاح خارج الفئة العمرية المستهدفة

<https://ee.kobotoolbox.org/x/vJD9R5RC>

جامعة خارج لبنان

<https://ee.kobotoolbox.org/x/wT4d9811>

الحصول على لبنان عقد عمل خارج

<https://ee.kobotoolbox.org/x/sA0BY3ni>

للحصول على الرابط المناسب، أرسل كلمة موجاً رقم الهاتف التالي 06/669584 وستصلك لائحة بجميع الروابط.

الإبلاغ عن تلقيه الجرعة الأولى خارج لبنان

يُمكنك الإبلاغ عن تلقي الجرعة الأولى خارج لبنان من خلال تعبئة الإستمارة التالية عبر هذا الرابط:

<https://ee.kobotoolbox.org/x/FHf9wzP>

للحصول على الرابط المناسب، أرسل كلمة موجاً رقم الهاتف التالي 06/669584 وستصلك لائحة بجميع الروابط.

إذا فقدت رابط التسجيل أو رسالة الموعد

إذهب إلى <https://covax.moph.gov.lb> اضغط على: إعادة إرسال الرابط عن طريق الرسائل القصيرة

- إملاء المعلومات اللازمة: الإسم الأول، تاريخ الميلاد، رقم الهاتف المحمول
- إختار نوع الرسالة القصيرة: تأكيد التسجيل/الموعد، الشهادة
- إضغط إرسال

ستتلقى بعد ذلك رسالة نصية قصيرة تحتوي على الرابط الذي تريده.

للحصول على الرابط المناسب، أرسل كلمة موجاً رقم الهاتف التالي 06/669584 وستصلك لائحة بجميع الروابط.

لتعديل في البيانات

لتعديل في بيانات: الإسم الثلاثي، تاريخ الميلاد، رقم بطاقة التعريف، الرقم الخليوي

تعبئة طلب تعديل البيانات الأساسية عبر هذا الرابط:

<https://ee.kobotoolbox.org/x/o2wz81MP>

للحصول على الرابط المناسب، أرسل كلمة موجاً رقم الهاتف التالي 06/669584 وستصلك لائحة بجميع الروابط.

لتلقيح الطلاب اللبنانيين في الخارج

يستطيع أي طالب لبناني في الخارج طلب اللقاح من خلال تعبئة الإستمارة التالية عبر هذا الرابط:

<https://ee.kobotoolbox.org/x/miQsKMZ0>

للحصول على الرابط المناسب، أرسل كلمة موجاً رقم الهاتف التالي 06/669584 وستصلك لائحة بجميع الروابط.

لتقريب موعد الجرعة الأولى أو الثانية بداعي السفر

يُمكن تقريب موعد الجرعة الأولى أو الثانية فقط في احد الحالات التالية:

يهدف السفر أو يهدف إجراء عمل طبي

<https://ee.kobotoolbox.org/x/b6gn1zFj> | <https://ee.kobotoolbox.org/x/rFYeYlqL>

The National Awareness Campaign to register on the Coronavirus Vaccine Platform

Does the COVID-19 vaccine provide protection against the New Delta Variant?

Studies show that in countries where the variant is spread, unvaccinated populations are more likely to be hospitalized after infection. **Two doses of the vaccine should be administered to provide protection from the Delta Variant.**

What is the Delta Variant?

It is a variant of the COVID-19 virus and the fastest spreading one. Till 9 July 2021, it has been found in 98 countries at least and is spreading rapidly among unvaccinated populations.

How can we protect ourselves from the Delta Variant?

Take the full course of vaccination to achieve full protection.

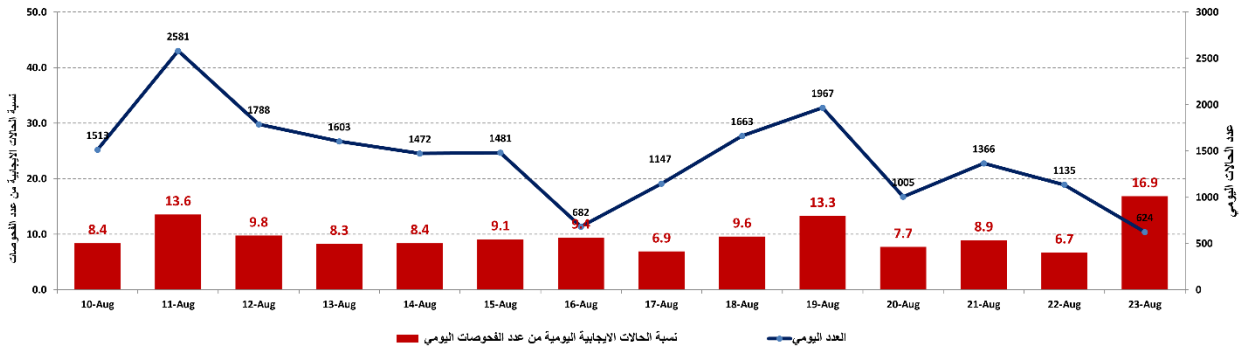
Abide by all preventive measures (safe distancing, mask wearing, hand hygiene)

Ref : Ministry of Public Health

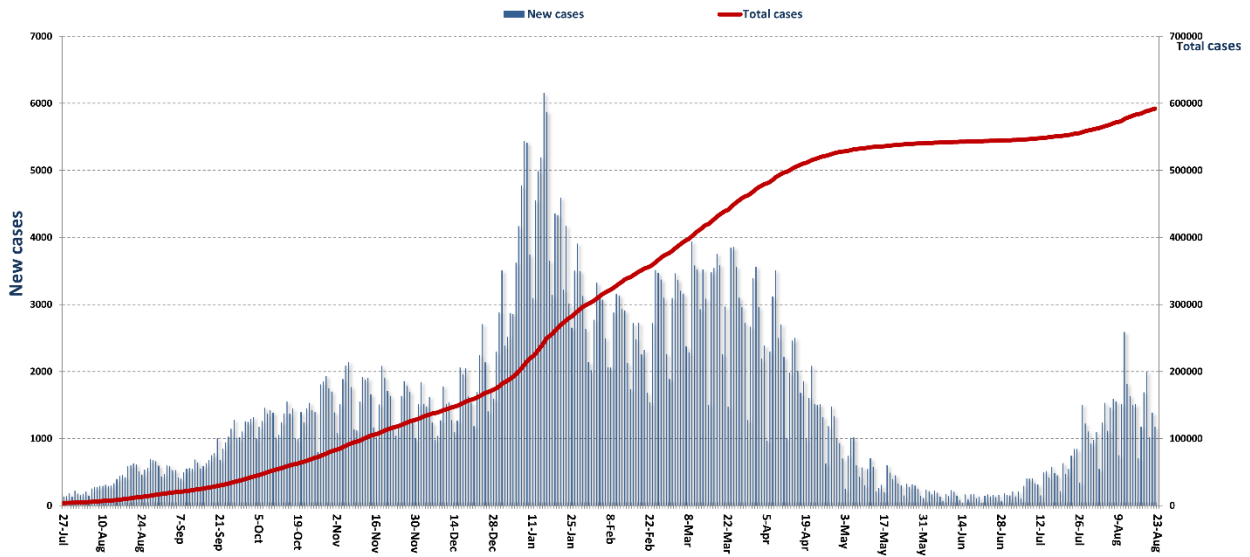
All reports and related decisions can be found at: <http://drm.pcm.gov.lb>

Or social media @DRM_Lebanon

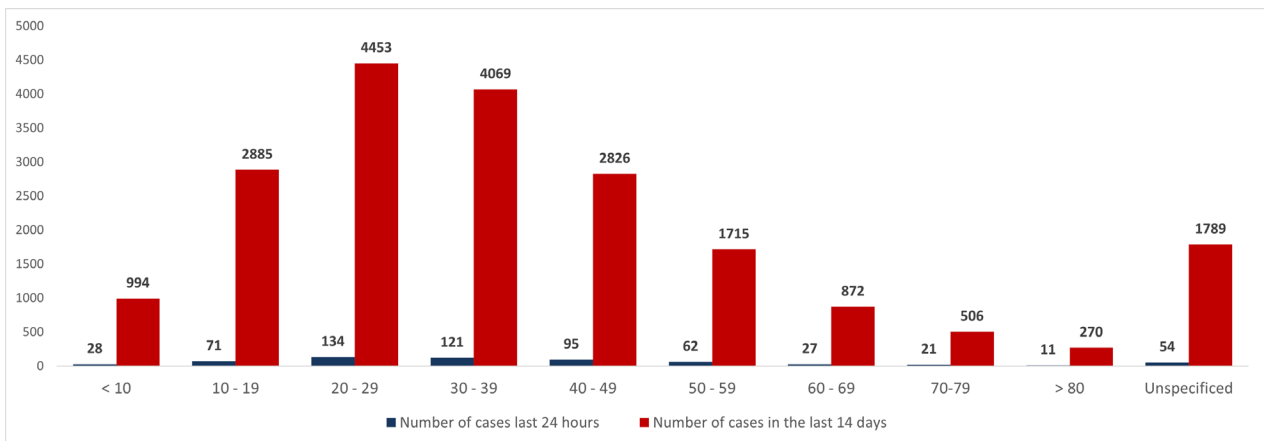
The percentage of positive cases out of the number of daily checks during the past 14 days



Cumulative cases per day



Cumulative cases by age group



Ref : Ministry of Public Health

All reports and related decisions can be found at: <http://drm.pcm.gov.lb>

Or social media @DRM_Lebanon

Decisions and actions taken during the past 48 hours

Ministry of Public Health

The Minister of Public Health from the airport thanked Kuwait for evacuating 6 injured in the Al-Taleel and Al-Qina'a explosion, stressing that cooperation between the two countries is continuing for the good of the two peoples.

At 9:00 pm on Sunday, a Kuwaiti plane arrived at Rafic Hariri International Airport to evacuate six wounded people from the Taleel disaster, in the presence of the Minister of Public Health and the Kuwaiti ambassador to Lebanon.

The Minister of Public Health announced from Baabda Palace that an exceptional approval had been granted regarding the Kuwaiti donation to establish two hospitals in Akrom and Harbata, in addition to allocating \$25 million from the World Bank to complete modern departments in government hospitals, adding that the medicine crisis is on the way to a solution.

The Ministry of Public Health reported that PCR tests had been completed for flights that arrived in Beirut and were conducted at the airport on August 14, 15 and 16. The results showed that there were eighty-three (83) positive cases distributed on the following flights:

14/08/2021				15/08/2021				16/08/2021			
Direction	Company	Flight	Cases	Direction	Company	Flight	Cases	Direction	Company	Flight	Cases
Damascus	Q6	201	1	Doha	Qatari	418	1	Moscow	SU	510	1
Athens	A3	946	1	Cairo	Egypt Air	713	1	Paris	MEA	222	2
Addis Abbab	Ethiopians	406	2	Antalya	AJ	7834	4	Addis Abbab	Ethopians	406	1
Cairo	Egypt Air	713	1	Baghdad	Iraqi Air	131	1	Istanbul	Turkish Air	828	2
Dubai	Emirates	957	1	Istanbul	Turkish Air	824	1	Dubai	Emirates	957	1
Baghdad	Iraqi Air	301	1	Bodroum	AJ	7828	1	Larkana	MEA	262	1
Dalman	AJ	7846	1	Sharjah	G9	385	3	Doha	Qatari	416	1
Abu Dhabi	EY	533	1	Paris	Air France	564	2	Erbel	UBD	705	1
Larkana	MEA	262	1	Frankfurt	LH	1306	1	Sharjah	G9	385	1
Istanbul	MEA	266	5	Al Basra	MEA	333	1	Dubai	MEA	427	1
Sharjah	G9	385	1	Larkana	MEA	262	1	Orali	TO	3330	1
Yuvan	MEA	276	1	Baghdad	MEA	323	1	Najjaf	Iraqi Air	139	1
Cairo	MEA	305	1	Adana	AJ	7836	1	Baghdad	MEA	323	2
Dubai	MEA	427	1	Cairo	MEA	307	1	Berlin	SR	110	1
Brussels	MEA	216	1	Istanbul	MEA	268	2	Larkana	MEA	272	2
Baghdad	MEA	323	1	Najjaf	MEA	327	2	Baghdad	Iraqi Air	301	1
Dubai	Emirates	953	1	Istanbul	Turkish Air	826	1	Dubai	FZ	159	1
Erbel	MEA	325	1	Abu Dhabi	MEA	419	1	Cairo	MEA	307	1
Cairo	Egypt Air	711	2	Dubai	MEA	429	1	Neice	MEA	224	1
London	MEA	202	1					Istanbul	Pegasus	862	1
Istanbul	MEA	268	1					Dubai	Emirates	955	1
Istanbul	Turkish	826	2								
Abu Dhabi	MEA	419	1								
Damascus	RB	185	1								
Total			31	Total			27	Total			25

Lebanese Red Cross

Cases that have been transferred to hospitals	The number of PCR assays That have been taken to hospitals	The number of people who were transported to the vaccination centers	The number of beneficiaries Awareness seminars	Number of home visits to register COVID-19 vaccine recipients	The number of beneficiaries of the electronic platforms
31,269 (59 New)	99,763	3,264	149,647	48,782 (384 New)	6,388 (2 New)

Lebanese Army Forces

- The army units continue to distribute social aid (400,000 Lebanese pounds) to families with limited income in all Lebanese territories.
- Supporting the security services in implementing the decisions issued by the Council of Ministers.
- Reporting that 252/ PCR examinations were conducted for members of the army, where it was found that there were /46/ positive cases: /17/ active service, /22/ civilian, /2/ military medical, /5/ retired

General Directorate of State Security

- Reporting the number of new positive cases in the various governorates.
- Report on the vaccination campaigns that are being implemented in various Lebanese regions through the Ministry of Public Health.

General Directorate of Internal Security Forces

51,378 written minutes have been written against violators of the decisions of general mobilization since 01/14/2021.

The General Directorate of the Internal Security Forces - Public Relations Division issued the recommendations of the periodic meeting of the emergency committee to raise the state of alert in Lebanese prisons, which came as follows:

- Strictly implementing the necessary measures to prevent the spread of the Corona virus, especially in light of the emergence of the rapidly spreading "Delta" mutant.
- Continuing to vaccinate prisoners and detainees in all prisons and places of arrest and detention, and follow-up awareness campaigns on this issue.
- Follow-up communication with international organizations and specialized associations in terms of monitoring the equipment and maintenance of vital facilities in prisons.

General Directorate of General Security

- It was reported that there were 8 new injuries among the elements of the General Directorate of Public Security.
- Reporting the number of new positive cases in the various governorates and districts.
- Follow up on the procedures adopted at the air, land and sea borders in cooperation with the teams of the Ministry of Public Health

Ministry of Public Works and Transportation

Beirut Rafic Hariri International Airport:

Departing Flights		Arriving Flights	
Number of Flights	81	Number of Flights	86
Number of Departing Individuals	13,024	Number of Arrivals	6,095

Ports:

Port	Entered			Left		
	Import	Direction	#	Export	Direction	#
Beirut	Containers	Mersen	1	Containers	Port Said	1
	Containers	Limassoul	1	Containers	Mersen	1
Jeyeh	Gasoline	Limassoul	1			
Tripoli	Containers	Port Said	1	Containers	Mersen	1
	Diesel	Beirut	1	Containers	Turkey	1
	Blank	Alexandrun	1	Containers	Romania	1
	Conainers	Tassuko	1			
Total			7			5

General Decisions / Announcements

The meeting of the Follow-up Committee on Preventive Measures and Measures for the Coronavirus, held on 12/08/2021, issued the following recommendations:

- Emphasis on the previous recommendation regarding making the necessary circulars by: the General Directorate of the Presidency of the Council of Ministers, the Ministries of Interior and Municipalities, Economy and Trade, Tourism, Public Health, Education and Higher Education and Labor in terms of the obligation to grant the vaccine to all workers in the public and private sectors Under its supervision, it is the responsibility of the persons who refuse to receive the vaccine to present a negative PCR result every 72 hours so that the material cost of the examination is at their own expense.
- Ministry of Tourism, Ministry of Interior and Municipalities - General Directorate of Internal Security Forces, General Directorate of State Security: Strict crackdown on violations related to non-compliance with hotel quarantine, subject of General Directorate of Civil Aviation Circular No. 31/2, especially against persons who deliberately leave their passports and claiming to lose it later or making fake hotel reservations
- The General Directorate of Civil Aviation: Making the necessary circular to exempt passengers who left Lebanon and want to return within a week from conducting a PCR examination in the countries from which they wish to return, if they are subject to a PCR examination upon their arrival at Rafic Hariri International Airport, as well as exempting them from the hotel quarantine in the event Their coming from one of the countries subjects of Circular No. 31/2.

The Middle East Airlines - Lebanese Airways, announced in a statement that, starting from 6/8/2021, all passengers arriving in Lebanon will be subject to the following procedures:

- Categories obligated to hotel quarantine: Passengers coming from the United Kingdom - Cyprus - Turkey - Brazil - United Arab Emirates - Iraq - India - Malawi - Ethiopia - Zambia - Liberia - Kenya - Gambia and Sierra Leone (not passengers transiting through these countries) with mandatory possession of a reservation My hotel is at their own expense, for 4 days / 3 nights in one of the approved hotels. Passengers who do not have a hotel reservation are not allowed to board the plane.
- **Categories excluded from hotel quarantine:**
 - ❖ National and foreign diplomatic missions and their families, if they adhere to the quarantine for a period of four days at their place of residence.
 - ❖ Passengers who have previously received at least one dose of any Covid-19 vaccine without a specified duration.
 - ❖ Passengers who were infected with the Corona virus and recovered from it within a period of ninety days before the date of their travel to Lebanon, after presenting an official document proving this.
 - ❖ Passengers transiting by land to Syria through Rafic Hariri International Airport - Beirut.
 - ❖ Minor passengers under 18 years of age, whether they are coming alone or accompanied by their parents.

Ref : Ministry of Public Health

All reports and related decisions can be found at: <http://drm.pcm.gov.lb>

Or social media @DRM_Lebanon

- Categories obligated to conduct a PCR examination before coming to Lebanon: All passengers must have performed a PCR examination with the mandatory presence of a QR code in one of the approved laboratories, within a maximum of 96 hours from the date of issuance of the examination result until arriving in Lebanon and that they show the result of the examination upon registration bags. Passengers who do not have a negative test result are not allowed to board the plane coming to Lebanon
- Categories excluded from conducting a PCR examination before coming to Lebanon:
 - ❖ Passengers who have received the second dose of Covid-19 vaccine or a full dose of Covid-19 vaccine (which is only one dose), for a period of no less than two weeks.
 - ❖ Passengers who were infected with the Corona virus within a period of ninety days preceding the date of their travel to Lebanon, after presenting an official document proving this.

Note: All passengers arriving in Lebanon are subject to a PCR examination upon their arrival at Rafic Hariri International Airport - Beirut, except for children under 12 years and UNIFIL forces.

Laboratories that did not comply with the procedures approved by the MoPH About the information required to be recorded for infected cases within the past 24 hours

Laboratories that did not specify the Governorate	
Laboratory/Hospitals	Cases
SDL002-Family Medical Laboratories	10
BDH505-Rafic Hariri University hospital	9
BRH626-Hotel Dieu de France	7
BDH562-Hospital Mont liban	5
SRL001 - Mashrek Medical Diagnostic Center MDC	5
BLH215-Hospital Dar Amal / Baalbeck	1
CHH504-Sibline Gov.	1

Number of positive cases without specifying the place of residence	
Laboratory/Hospitals	Cases
BDL003-Laboratoire Inovie / Fayyadieh	13
SDL002-Family Medical Laboratories	10
BDH505-Rafic Hariri University hospital	9
BRH626-Hotel Dieu de France	7
BDH562-Hospital Mont liban	5
SDH418-Hospital Hammoud / Saida	5
SRL001 - Mashrek Medical Diagnostic Center MDC	5
JBL001-Laboratoire Akiki et Boulos	3
TRH125-Hospital Mazloum	3
BDL015 - Mediland Laboratories and Diagnostic Imaging Center	2
BLH215-Hospital Dar Amal / Baalbeck	1
BLL002 - Medical Care Diagnostics	1
BRH630-Hospital Geitawi	1
CHH504-Sibline Gov.	1
NBH316-Hospital Ragheb Harb	1

Number of positive cases without a phone number	
Laboratory/Hospitals	Cases
BDH505-Rafic Hariri University hospital	9
SRL002 - Hassan Alaweyeh Lab	1

A list of the laboratories accredited by the MoPH to conduct PCR tests

المختبرات الحكومية المؤهلة لإجراء التشخيص المخبري لفيروس كورونا بطريقة الـ RT-PCR

المختبر	الموقع
مستشفى رفيق الحريري الجامعي RHUH	بيروت
Halba Governmental Hospital مستشفى حلبا الحكومي	حلبا
Minieh Governmental Hospital مستشفى المنية الحكومي	المنية
Tripoli Governmental Hospital مستشفى طرابلس الحكومي	طرابلس
Batroun Governmental Hospital مستشفى البترون الحكومي	البترون
Ftough Keserwan Gov. Hospital مستشفى فتوح كسروان الحكومي (البوار)	كسروان
Seblin Governmental Hospital مستشفى سبلين الحكومي	سبلين
Saida Governmental Hospital مستشفى صيدا الحكومي	صيда
Nabih Berri Gov. Hospital مستشفى نبيه بري الحكومي الجامعي	النبطية
Tebnine Governmental Hospital مستشفى تبنين الحكومي	تبنين
Bent Jbeil Governmental Hospital مستشفى بنت جبيل الحكومي	بنت جبيل
Baalbeck Governmental Hospital مستشفى بعلبك الحكومي	بعلبك
Hermel Governmental Hospital مستشفى الهرمل الحكومي	الهرمل
Prés. Elias Hrawi Gov. Hospital مستشفى الرئيس إلياس الهراوي الحكومي	زحلة
Baabda University Gov. Hospital مستشفى بعبدا الحكومي الجامعي	بعبدا
Marjeyoun Governmental Hospital مستشفى مرجعيون الحكومي	مرجعيون

المختبرات الخاصة المؤهلة لإجراء التشخيص المخبري لفيروس كورونا بطريقة الـ RT-PCR

المختبر	الموقع
مستشفى الجامعة الأميركية AUBMC	بيروت
Hotel-Dieu de France (HDF) مستشفى أوتيل ديو الجامعي	بيروت
مختبرات رودولف ميريو (الجامعة اليسوعية - المتحف) Laboratoire Rodolphe Mérieux (Université Saint-Joseph)	بيروت
Saint-George Hospital - UMC مستشفى القديس جاورجيوس الجامعي	بيروت
Makassed General Hospital مستشفى المقاصد	بيروت
LAU Medical Center - Rizk Hospital مستشفى رزق الجامعي	بيروت
Hôpital Libanais Geitawi - CHU مستشفى اللبناني الجعيتاوي الجامعي	بيروت
Hôpital Notre-Dame du Rosaire مستشفى الوردية	بيروت
Clemenceau Medical Center (CMC) مركز كليمنصو الطبي	بيروت
Doctor's Center مختبر مركز الأطباء	بيروت
Fontana Laboratories مختبر فونتانا (الحمرا)	بيروت
General Security Lab مختبر الأمن العام (العدلية)	بيروت
CEMA مختبر سيما	بيروت
Laboratoire Jabre-Ghorra مختبرات جبر وغزة	بيروت
Saint Marc Medical & Diagnostic Center مختبر السان مارك	بيروت
PHD مختبر	بيروت
Saint Joseph Medical Center - الأشرفية - المختبر مركز مار يوسف الطبي - الأشرفية	بيروت
Ashrafieh مختبر	بيروت
Bey Lab – Furn El Chebbak مختبر باي لاب	فرن الشباك
Laboratoire Moderne (Modern Lab- Berjaoui) المختبرات الحديثة	الغبيري
Sahel General Hospital (SGH) مستشفى الساحل	الغبيري
Al Zahraa Hospital – UMC مستشفى الزهراء الجامعي	الغبيري
Al Rassoul Al Aazam Hospital مستشفى الرسول الأعظم	برج البراجنة
Bahman Hospital مستشفى بهمن	حارة حريك
مختبر ناتيونال دياغنوستك سرفيس كومباني National Diagnostic Services Company (NDSC)	حارة حريك

مختبر مركز دار الحوراء	حارة حريك
Medical Diagnostic Center مختبر الدكتور محمود عثمان مركز التحاليل الطبية	المريجة
American Diagnostic Center (ADC) مختبر أميريكن دياغنوستك سنتر	الجناح
Mount Lebanon Hospital مستشفى جبل لبنان	بعيدا
Hôpital Saint-Georges – Hadath مستشفى السان جورج الحدث	بعيدا
Al Hadi Laboratory مختبر الهادي	بعيدا
INOVIE-Liban مختبر	بعيدا
Molecular Biology and Cancer مختبر علم الأحياء الجزيئية في الجامعة اللبنانية	الحدث
Immunology Laboratory in Lebanese University مختبر سان ميشال للتحاليل الطبية	ضبية
Saint-Michel Lab مختبر سان ميشال للتحاليل الطبية	الحازمية
Hôpital du Sacré- Coeur مستشفى قلب يسوع	الحازمية
Clinigene مختبر كلينيجان	المتن
Hôpital Dr.Samir Serhal مستشفى سرحال	المتن
Transmedical for Life مختبر ترانسيميديكال فور ليف	المتن
Hôpital St. Joseph – Dora مستشفى مار يوسف - الدورة	المتن
Centre Hospitalier de Bhannes مستشفى مركز بحس الطبي- ضهر الصوان	المتن
Haroun Hospital مستشفى هارون	الزلقا
Hôpital Abou Jawdeh مستشفى أبو جودة	الزلقا
Bellevue Medical Center (BMC) مستشفى بلفو	المنصورية
Middle East Institute of Health (MEIH) مختبر مركز الشرق الأوسط الصحي	بصاليم
Hôpital Albert Haykal مستشفى هيكل	الكورة
University of Balamand مختبر جامعة البلمند	الكورة
Centre Hospitalier du Nord (CHN) مركز الشمال الإستشفائي	زغرنا
Saydet Zghorta University Medical Center سيدة زغرنا المركز الجامعي الطبي	زغرنا
Family Medical Center- Zgharta المركز العائلي الطبي	زغرنا
مستشفى دار السلام	القييات
Mazloum Hospital مستشفى المظلوم	طرابلس
Al Mounla Hospital مستشفى المنلا	طرابلس
Nini Hospital مستشفى النيني	طرابلس
مختبر ميكروبيولوجيا الصحة والبيئة LMSE - المعهد العالي للدكتوراه، الجامعة اللبنانية	طرابلس
مختبر المستشفى الإسلامي الخيري - طرابلس	طرابلس
Dar El Chifaa Hospital مختبر مستشفى دار الشفاء	طرابلس
CHU - Notre-Dame des Secours مستشفى سيدة المعونات الجامعي	جبيل
Laboratoires Akiki & Boulos مختبر عقوي وبولس	جبيل
Laboratoire Dr. Chelala مختبرات الدكتور شلالا	غزير
Centre Médical Wakim مختبر واكيم	جونية
Elite Medical Center - Jeita مختبر إيليت الطبي - جعيتا	جعيتا
Ain Wazein Hospital مستشفى عين وزين	الشوف
Eva Lab مختبر إيفا لاب	عرمون
Hammoud Hospital UMC مستشفى حمود الجامعي	صيدا
Al Karim Medical Laboratory (KML) مختبر الكريم	صيدا
Labib Medical Center مختبر مركز لبيب الطبي	صيدا
Lebanese Diagnostic Center (LDC) مختبر الـ	صور
Family Medical Laboratories مختبر العائلة	الغازية
Sheikh Ragheb Harb Hospital مستشفى الشيخ راغب حرب	النبطية
Laboratoires Sabbah d'Analyses Médicales مختبرات الصباح	النبطية
Laboratoires Al Salam مختبر السلام	النبطية
Hôpital du Secours Populaire مختبر مستشفى النجدة الشعبية - النبطية	النبطية
Jabal Amel Hospital مستشفى جبل عامل	صور
Mashrek Diagnostic Center (MDC) مختبر المشرق للتشخيص الطبي	صور

مختبرات دلتا Delta Laboratories	صور
مختبر الدكتور حسن علوية Dr. Hassan Alawiyyeh Laboratory	صور
مستشفى دار الحكمة Dar Al Hikmah Hospital	بعلبك
مستشفى دار الأمل الجامعي Dar Al Amal University Hospital	بعلبك
مختبرات العناية الطبية Medical Care Laboratories – Baalbeck	بعلبك
مختبرات العناية الطبية Medical Care Laboratories - Labweh	البويرة
مستشفى تلّ شيحا Tall Chiha Hospital	زحلة
مستشفى خوري Khoury Hospital	زحلة
مختبر ميديكال كير سنتر Medical Care Center (MCC)	زحلة
مستشفى اللبناني الفرنسي Hôpital Libano-Français	زحلة
مستشفى الرياق Hôpital El Rayak	الرياق
مستشفى شتورة Chtoura Hospital	شتورة

مختبرات المستشفيات العسكرية

المستشفى العسكري المركزي في بيروت Laboratoire Militaire Central	بيروت
---	-------

المختبرات المؤهلة لأخذ عينات "المسحات الأنفية" بطريقة Drive- thru

مختبر ميديكال دياغنوستيك تريتماننت سنتر (الحمراء) Medical Diagnostic Treatment Center (MDTC)	بيروت
مختبر ميد لاب MedLab SAL CIC ALS (الحمراء – الجعقنور)	بيروت
مختبرات عيتاني Itani Medical Laboratories (المزرعة)	بيروت
مختبر ساقية الجزير Sakiet Al Janzir Laboratories (راس بيروت)	بيروت
مختبر أ ب سي ABC Laboratories	بيروت
مختبرات معوض الطبية Mouawad Medical Laboratory	الشيح
مختبرات الشياح (د. فواد ربحان) Rihan Medical Center	الشيح
مختبرات المتحدة للرعاية الصحية United Healthcare Laboratory	الشيح
مختبر النقاء الطبي Al Naqaa Medical Center	الأوزاعي
مختبرات البوليفار Laboratoire le Boulevard	بدارو
مركز اليوسف الإستشفائي التعليمي CHU Al - Youssef	حلبا
مستشفى الكورة Hôpital El Koura	الكورة
مركز كسروان الطبي Keserwan Medical Center	كسروان
مختبر إكسبرت لاب Expert Lab	المنصورية
مختبر سانت ايلي Saint-Elie Laboratory	أنطلياس
مختبر ب م ب BMP Laboratory	نوق مصبح
مختبر الدكتور ايلي طالب Laboratoire Dr. Elie Taleb	جونية
مختبرات الشرق الأوسط للتحاليل الطبية Memer Lab	جونية
مختبر Family Clinic	صيدا
مختبر فيرست لاب First Lab	العاقية
مختبرات الرياض الطبية Al Riyad Medical Laboratory	جب جنين
مختبر مركز التشخيص الطبي ADC	جب جنين
مختبر لايف لاب Life LAB	بعلبك
مختبر مركز البقاع الطبي	زحلة
مختبرات السان جورج Laboratoires Saint George	زحلة
مختبرات العربي الطبية Araïbi Medical Laboratories	رياق
مختبر مستشفى البقاع	البقاع