

Lebanon National Operations Room
Daily Report on COVID-19

Thursday. 19 August.2021

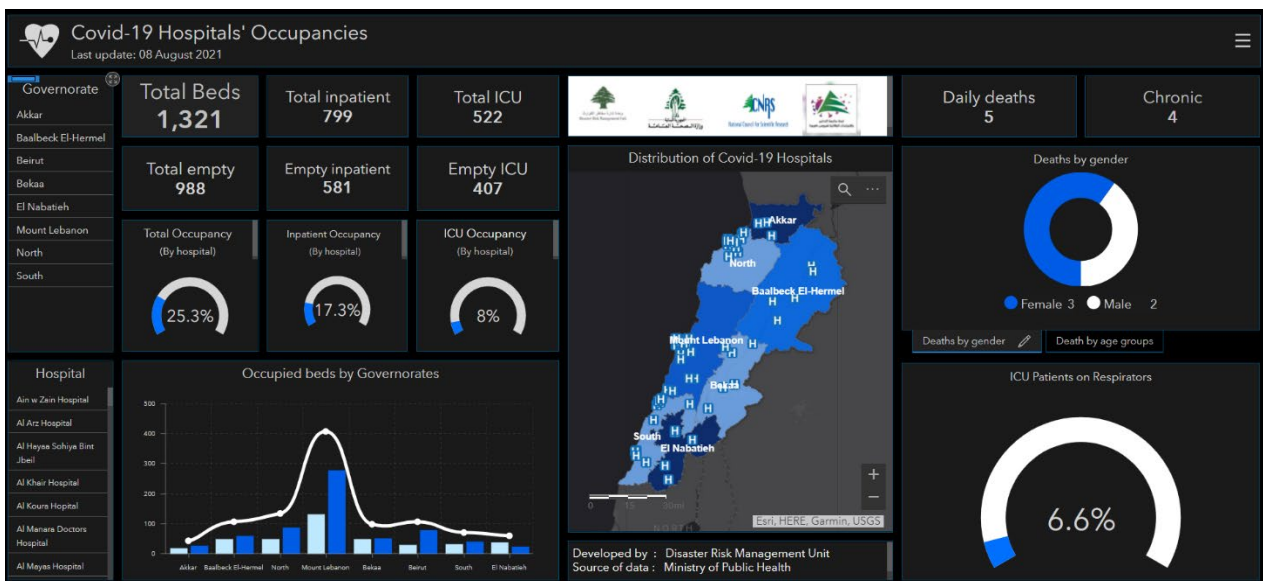
Report #490

Time Published: 8:00 PM

| | | | | | | | |
|---|---------------------|--|------------------------|--|--|---|------------------------------|
| 1,993 New Cases | | 588,578 Total Cases since 21.2.2020 | | 7,999 Total Deaths | | 543,790 Total Recovered | |
| 1,967 Residents | 26 Expats | 580,797 Residents | 7,781 Expats | 6 New Deaths | | 626 New Recovered | |
| 163 Deleted Status due to its recurrence | | 2,724 Total Cases in the Health Sector | | 36,789 Total Active Cases | | 440 Hospitalized Cases | |
| 8.9 % The percentage of positive examinations /100 examinations during the past 14 days | | 0 Cases in the Health Sector | | 36,789 Cases in Home Isolation | | 41 Ventilated Cases | 0 New Cases in ICU |
| | | | | | | 187 Total cases in ICU | 253 Mild cases |
| Vaccination | | Last 24 hours | Cumulative | 5,721,272 COVID-19 Tests since 21.2.2020 | | Lebanon Status compared to the World | |
| Registered | 15,811 | 2,334,767 | 34.2% | 4,114 COVID-19 Tests at Airport within 24 hrs. | 14,791 COVID-19 tests for residents within 24 hrs. | | |
| 1st Dose | 13,090 | 1,346,513 | 28.2% | | | Total Cumulative | 588,578 |
| 2nd Dose | 7,931 | 1,097,194 | 23% | | | Total Deaths | 7,999 |
| | | | | | | Deaths percentage | 1,35% |
| | | | | | | Total recoveries | 543,790 |
| | | | | | | | 210,404,219 |
| | | | | | | | 4,410,737 |
| | | | | | | | 2.09 % |
| | | | | | | | 188,476,741 |

Ref: Ministry of Public Health Data

Occupancy rate of COVID-19 Beds and Availability



For daily information on all the details of the bed's distribution availability for Covid-19 patients among all governorates and according to hospitals, kindly check the dashboard link:

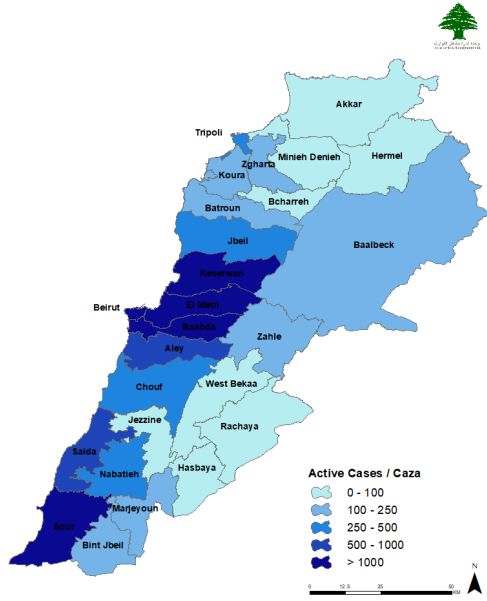
Computer: <https://bit.ly/DRM-HospitalsOccupancy-PC> Phone: <https://bit.ly/DRM-HospitalsOccupancy-Mobile>

| Beirut | 361 | Maten | 416 | Kesrwen | 104 | Batroun | 18 | Saida | 108 | Nabatieh | 51 |
|------------------|-----|--------------------|-----|---------------------|-----|--------------------|----|--------------------|-----|--------------------|----|
| Ain Mraisseh | 9 | Borj Hammoud | 32 | Jounieh Sarba | 8 | Batroun | 14 | Saida Dekermane | 2 | Nabatieh Et Tahta | 5 |
| Aub | 1 | Nabaa | 2 | Jounieh Kaslik | 5 | Kfar Aabida | 1 | Hlaliyeh | 1 | Mazraat Kfar Jaouz | 2 |
| Ras Beyrouth | 3 | Sinn Fil | 10 | Zouk Mkayel | 11 | Kour | 1 | Qiyaa | 1 | Kfar Roummane | 1 |
| Qreitem | 4 | Horch Tabet | 1 | Haret El Mir | 1 | Dahr | 1 | Ain El Heloueh | 6 | Habbouch | 5 |
| Raoucheh | 14 | Jisr Bacha | 1 | Jounieh Ghadir | 3 | Others | 1 | Majdelyoun | 2 | Kfour | 1 |
| Hamra | 29 | Jdaidet Matn | 17 | Zouk Mosbeh | 14 | Akkar | 14 | Aabra | 3 | Ain Qana | 2 |
| Ain Tineh | 1 | Baouchriyeh | 25 | Adonis | 4 | Halba | 2 | Bqosta | 1 | Houmine Faouqa | 1 |
| Msaitbeh | 9 | Daoura | 5 | Jounieh Haret Sakhr | 1 | Cheikh Mohammad | 1 | Ain Ed Delb | 1 | Roumine | 3 |
| Ouata Msaitbeh | 1 | Raouda Baouchriyeh | 19 | Jounieh Sahel Aalma | 5 | Aayoun | 1 | Ghaziye | 4 | Deir Ez Zahrani | 1 |
| Mar Elias | 7 | Sadd Baouchriyeh | 3 | Tabarja | 2 | Aakkar El Aatiqa | 1 | Darb Es Sim | 2 | Charqiyeh | 1 |
| Tallet Khayat | 7 | Sabtiyeh | 7 | Adma Oua Dafneh | 1 | Koueikhat | 1 | Kharayeb | 2 | Toul | 4 |
| Sanayeh | 5 | Deir Mar Roukoz | 2 | Safra | 1 | Aabboudiyeh | 1 | Mazraat Riz | 2 | Harouf | 3 |
| Zarif | 2 | Dekouaneh | 21 | Bouar | 3 | Bzal | 1 | Zrariyeh | 1 | Aabba | 2 |
| Mazraa | 14 | Mkalles | 1 | Aaqaybeh | 2 | Machta Hassan | 2 | Insariyeh | 2 | Insar | 1 |
| Borj Abou Haidar | 8 | Antelias | 28 | Aajaltoun | 3 | Rihaniyeh | 1 | Babliyeh | 2 | Zaoutar Charqiyeh | 2 |
| Basta Faouqa | 18 | Jall Dib | 39 | Ballouneh | 7 | Others | 3 | Sarafand | 4 | Qsaibeh | 2 |
| Tariq Jdideh | 22 | Naqqach | 16 | Shayleh | 1 | Minch Dunieh | 2 | Kaouthariyeh Siyad | 1 | Arnoun | 1 |
| Ras Nabaa | 11 | Zalqa | 15 | Ghazir | 3 | Others | 2 | Mazraat Tebna | 1 | Kfar Sir | 1 |
| Basta Tahta | 2 | Byaqout | 4 | Kfar Hbab | 2 | Zahleh | 23 | Saksakiyeh | 2 | Yohmor | 1 |
| Gemmaizeh | 1 | Dbayeh | 12 | Chnanaair | 1 | Zahleh Er Rassiyeh | 1 | Merouaniyeh | 2 | Sir El Gharbiyeh | 4 |
| Rmeil | 5 | Deir Aaoukar | 9 | Kfour | 3 | Zahleh El Maallaqa | 1 | Najjariyeh | 1 | Others | 8 |
| Achrafiyeh | 23 | Mansouriyeh | 18 | Bzoummar | 1 | El Oumara | 1 | Aarab Ej Jall | 1 | Bnt Jbeil | 20 |
| Aadlyeh | 14 | Daychouniyeh | 1 | Harissa | 1 | Zahleh Aradi | 2 | Aanqoun | 2 | Ain Ebel | 1 |
| Others | 151 | Fanar | 16 | Hayata | 1 | Fourzol | 1 | Kfar Melki | 1 | Rmaych | 3 |
| Baabda | 278 | Ain Saadeh | 8 | Bizhel | 1 | Hazerta | 1 | Others | 61 | Hariss | 3 |
| Chiyah | 12 | Kafra | 1 | Rayfoun | 1 | Ksara | 1 | Tyre | 154 | Kafra | 1 |
| Jnah | 24 | Roumieh | 2 | Qleiaat | 1 | Jalala | 1 | Sour | 35 | Borj Qalaouiyeh | 4 |
| Ouzaa | 8 | Bqennaya | 4 | Aachqout | 4 | Taalabaya | 2 | Sour El Bass | 2 | Yater | 1 |
| Bir Hassan | 4 | Bsalim | 18 | Faytroun | 7 | Jdita | 1 | Bahr Ech Chemali | 1 | Others | 7 |
| Ghbayreh | 11 | Nabay | 4 | Kfar Dibiane | 1 | Barr Elias | 2 | Sour Er Rachidiyeh | 3 | Marjaayoun | 14 |
| Ain Roummaneh | 6 | Mtayleb | 2 | Broummana | 1 | Majdel Aanjar | 1 | Borj Ech Chemali | 11 | Jdaideh | 6 |
| Furn Chebbak | 6 | Rabiye | 9 | Mayrouba | 1 | Riyaq | 3 | Batoulay | 2 | Taybeh | 2 |
| Haret Hreik | 31 | Qornet Chehouane | 7 | Hrajel | 2 | Aali En Nahri | 3 | Deir Qanoun El Ain | 5 | Meiss Ej Jabal | 4 |
| Laylakeh | 10 | Raboueh | 5 | Faraya | 1 | Others | 2 | Jouaiya | 5 | Touline | 1 |
| Borj Brajneh | 46 | Beit Ech Chaar | 2 | Jbeil | 45 | Beqaa Gharby | 19 | Mjadel | 1 | Others | 1 |
| Mreijeh | 10 | Dik Mehdi | 2 | Jbayl | 18 | Khirbet Qanafar | 1 | Mazraat Mechref | 1 | Hasbaiya | 2 |
| Tahouitat Ghadir | 6 | Ain Aar | 2 | Mastita | 1 | Joubb Jannine | 1 | Mahrouna | 1 | Abou Qamha | 1 |
| Baabda | 16 | Mazraat Yachouaa | 18 | Eddeh | 1 | Lala | 1 | Aaytit | 7 | Kfar Chouba | 1 |
| Hazmiyeh | 11 | Zakrit | 2 | Aamchit | 6 | Kamed El Laouz | 2 | Biyad | 1 | Chouf | 44 |
| Hadath | 41 | Bikfaya | 1 | Halate | 8 | Baaloul | 2 | Qana | 9 | Saadiyat | 1 |
| Louayzeh | 8 | Beit Chabab | 2 | Fidar | 1 | Ghazze | 6 | Maarakeh | 3 | Naameh | 3 |
| Jamhour Louaizeh | 2 | El Qnaytra | 1 | Nahr Ibrahim | 1 | Sohmor | 2 | Maaroub | 1 | Haret En Naameh | 2 |
| Kfar Chima | 2 | Ain Et Teffaha | 1 | Aalmat Chmaliyeh | 1 | Marj | 3 | Recheknanay | 3 | Chhim | 3 |
| Bsaba | 2 | Abou Mizane | 1 | Lehfed | 1 | Others | 1 | Jennata | 1 | Dalhoun | 2 |
| Rouayset Ballout | 2 | Qornet Hamra | 1 | Hboub | 1 | Baalbek | 9 | Ain Baal | 3 | Aanout | 1 |
| Aabadiyeh | 2 | Broummana | 3 | Hsarat | 1 | Baalbek | 3 | Bourgheliyeh | 1 | Sibline | 1 |
| Ras Matn | 6 | Baabdat | 2 | Kfar Masshoun | 1 | Harbata | 1 | Bazouriyeh | 11 | Barja | 1 |
| Deir Harf | 1 | Beit Meri | 1 | Others | 4 | Nabha Ed Damdoun | 1 | Hanaouay | 5 | Jiyeh | 2 |
| Aaraiya | 1 | Monteverdi | 2 | Tripoli | 74 | Deir El Ahmar | 1 | Tayr Debba | 4 | Jadra | 2 |
| Hammana | 1 | Aintoura | 2 | Madineh Ej Jdideh | 1 | Nabi Chit | 2 | Toura | 2 | Rmeileh | 2 |
| Btekhmay | 1 | Dhour Ech Choueir | 2 | Others | 73 | Flaoueh | 1 | Deir Qanoun Nahr | 1 | Ouardaniyeh | 1 |
| Others | 8 | Bteghrine | 2 | Koura | 19 | Hermel | 5 | Chehour | 1 | Joun | 1 |
| Aleyh | 99 | Douar | 1 | Amioun | 4 | Hermel | 3 | Bedias | 2 | Dmit | 2 |
| Aamroussiye | 2 | Baskinta | 1 | Kfar Aaqqa | 1 | Rachaiya | 1 | Aabbassiyeh | 4 | Brih | 1 |
| Hay Es Sellom | 9 | Others | 3 | Bechmizine | 1 | Aayha | 1 | Chabriha | 3 | Baaqline | 3 |
| Aamroussiye | 1 | | | Kfar Hazir | 2 | | | Chaaitiyeh | 2 | Ainbal | 1 |
| Khaldeh | 14 | | | Kousba | 3 | | | Qlailah | 3 | Hasrout | 2 |
| Oumara | 9 | | | Fiaa | 1 | | | Qasmiyeh | 3 | Beqaata | 1 |
| Deir Qoubel | 1 | | | Kfar Hata | 1 | | | Tayr Harfa | 1 | Ain Ouzain | 1 |
| Aaramoun | 13 | | | Ras Masqa | 1 | | | Mansouri | 1 | Khreibeh | 1 |
| Baouerta | 1 | | | Barsa | 3 | | | Majdel Zoun | 1 | Others | 10 |
| Bchamoun | 7 | | | Others | 2 | | | Others | 14 | | |
| Blaybel | 1 | | | Zagharta | 15 | | | Jezzine | 3 | | |
| Bdadoun | 1 | | | Zgharta | 4 | | | Jezzine | 1 | | |
| Bsous | 1 | | | Rachaaïne | 3 | | | Kfar Jarra | 1 | | |
| Aaley | 2 | | | MEjdlaiya | 3 | | | Rihane | 1 | | |
| Qmاتيye | 2 | | | Bsebaal | 1 | | | | | | |
| Ghaboun | 2 | | | Ras Kifa | 1 | | | | | | |
| Aaynab | 1 | | | Miziara | 2 | | | | | | |
| Kfar Matta | 1 | | | Others | 1 | | | | | | |
| Chanay | 3 | | | | | | | | | | |
| Saoufar | 8 | | | | | | | | | | |
| Btater | 2 | | | | | | | | | | |
| Ain Dara | 1 | | | | | | | | | | |
| Others | 17 | | | | | | | | | | |

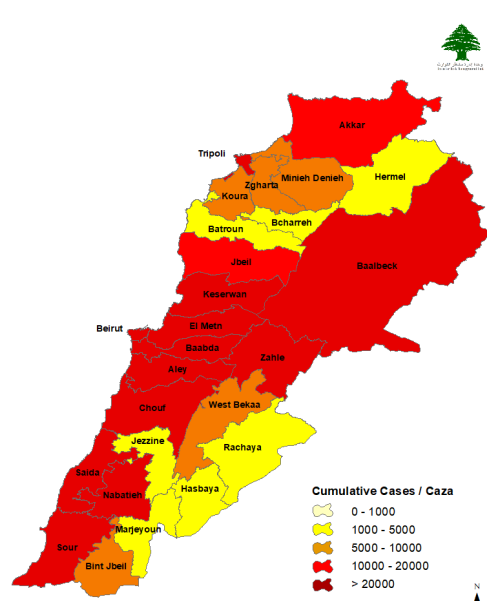
Others 97

Distribution of Active and Cumulative Cases

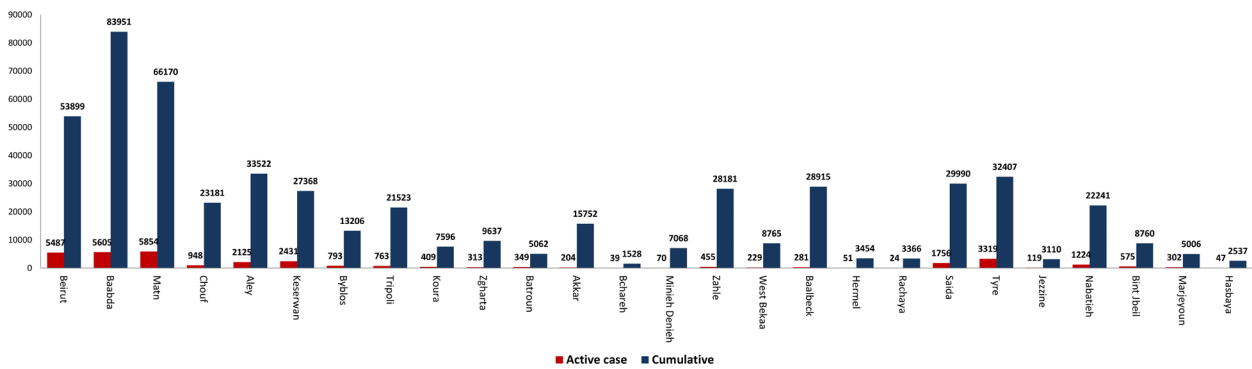
Distribution of Active Cases



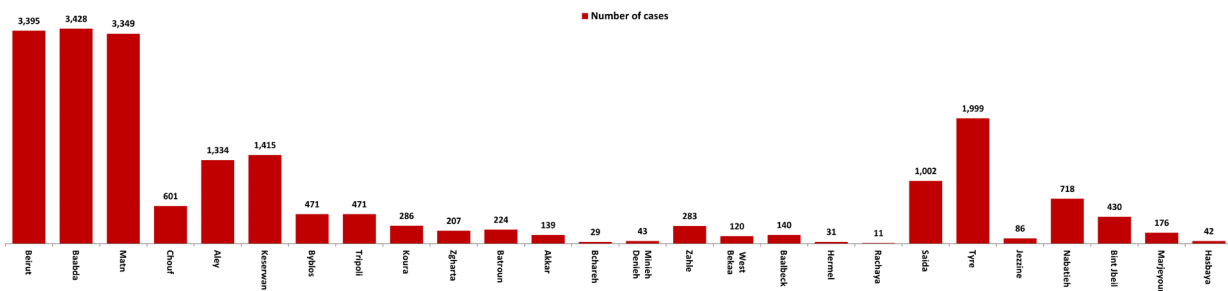
Distribution of Cumulative Cases



Number of Cases by Location



Number of cumulative cases for the last 14 days



Ref : Ministry of Public Health

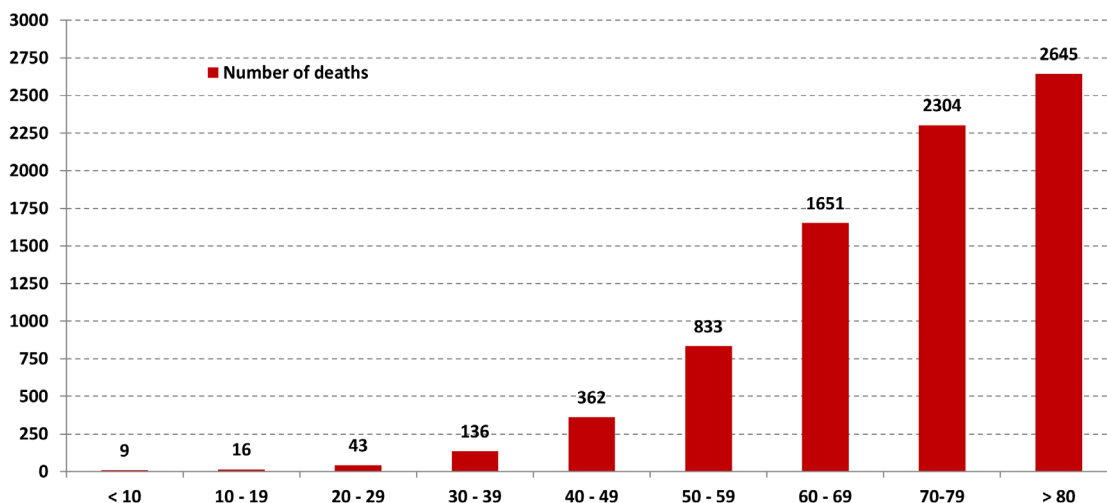
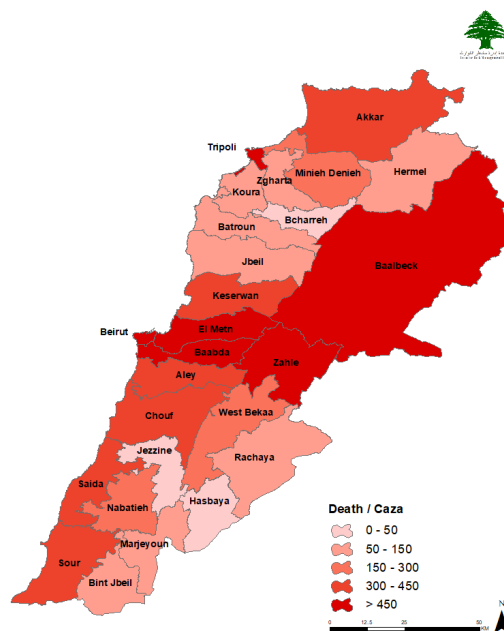
All reports and related decisions can be found at: <http://drm.pcm.gov.lb>

Or social media @DRM_Lebanon

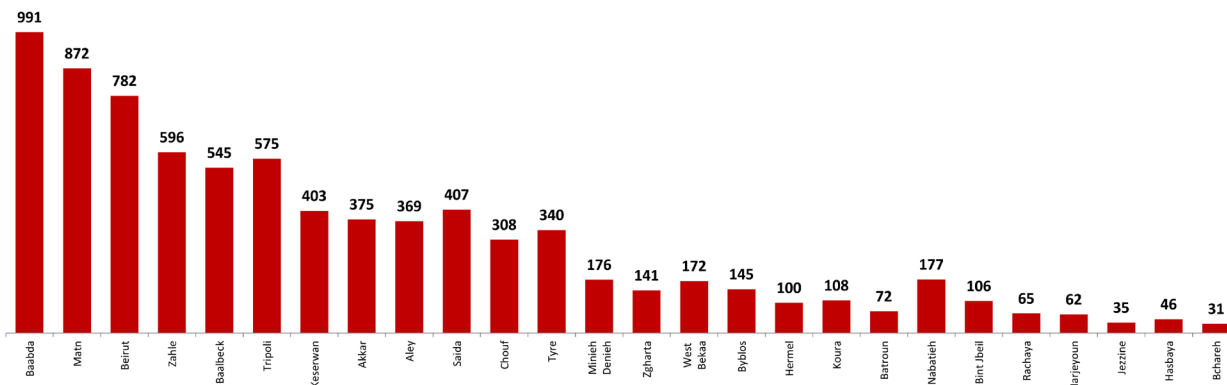
Distribution of Death Cases

Distribution of deaths during the past 24 hours

| Hospital | Residence | Gender | Age | Chronic |
|--------------------|-----------|--------|-----|---------|
| 19/08/2021 | | | | |
| RHUH | Baabda | Male | 37 | No |
| RHUH | Baabda | Male | 37 | No |
| RHUH | Beirut | Male | 60 | No |
| Al Zahraa Hosp | Baabda | Male | 65 | Yes |
| Mount Lebanon Hosp | Baabda | Male | 71 | Yes |
| Bahnass Hosp | Matn | Male | 78 | Yes |



Distribution of deaths by Governorate

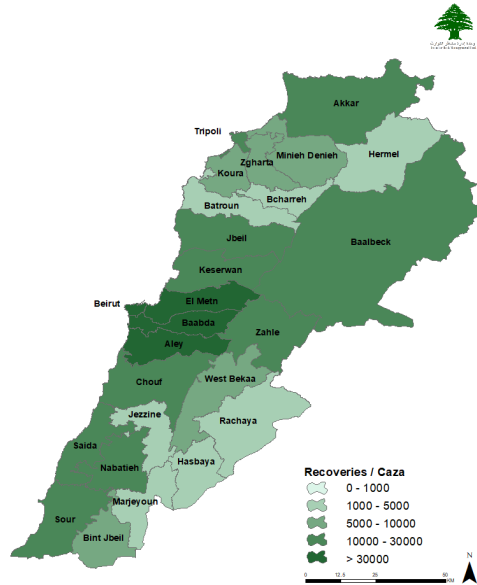


Ref : Ministry of Public Health

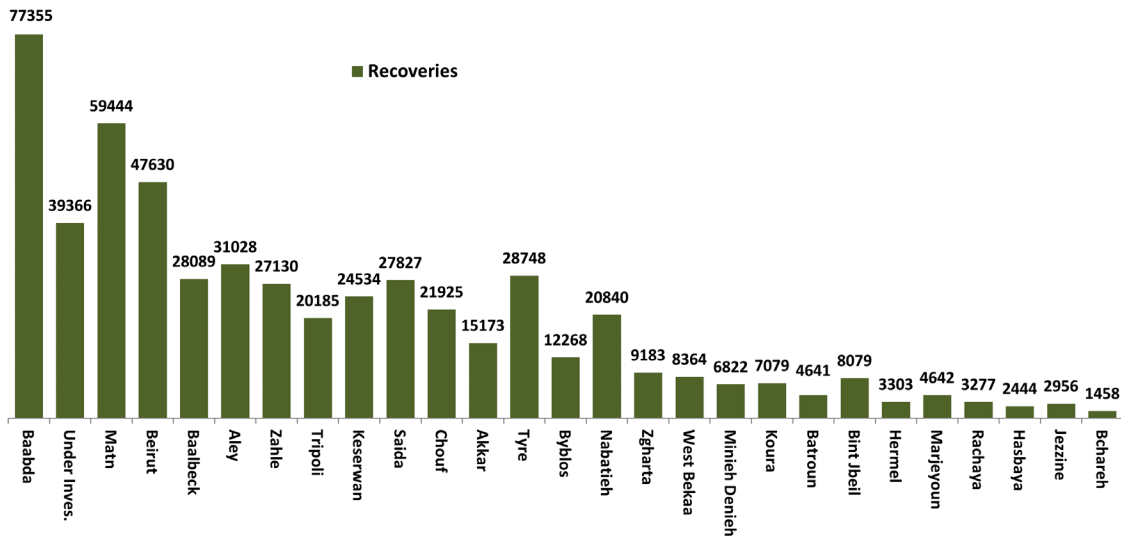
All reports and related decisions can be found at: <http://drm.pcm.gov.lb>

Or social media @DRM_Lebanon

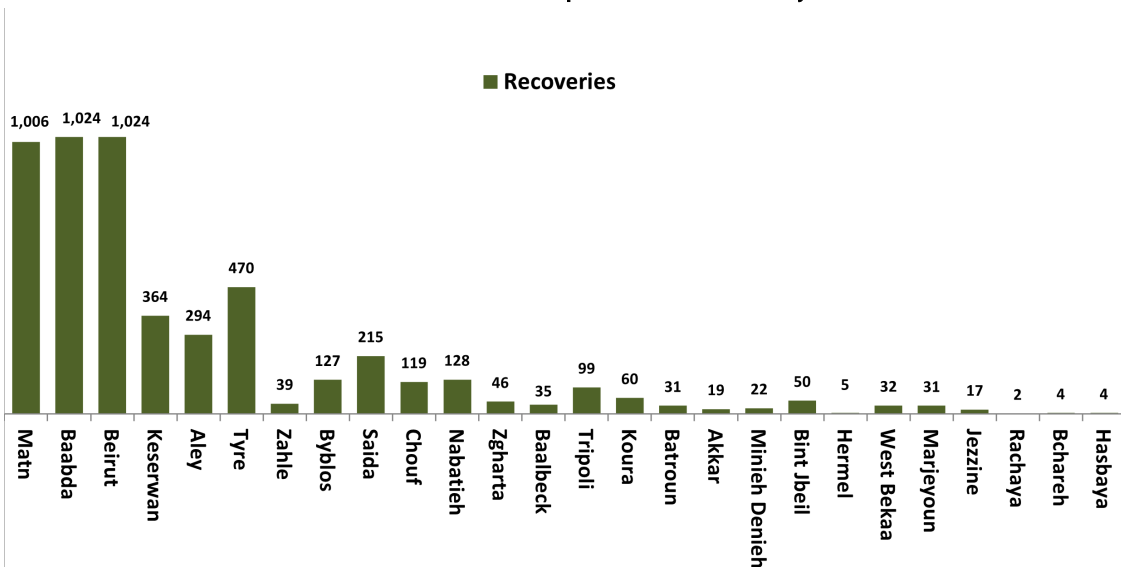
Distribution of Recoveries



Distribution of Recoveries per Casa



Distribution of Recoveries per Casa in the last 14 days



Ref : Ministry of Public Health

All reports and related decisions can be found at: <http://drm.pcm.gov.lb>

Or social media @DRM_Lebanon

The National Awareness Campaign on the Coronavirus Vaccine

للحصول على الرابط المناسب، أرسل كلمة مبرجاً رقم الهاتف التالي 06/669584 وستصلك لائحة بجميع الروابط.

طلب اللقاح في حالات إستثنائية

حالة صحة تتطلب أخذ اللقاح خارج الفئة العمرية المستهدفة

<https://ee.kobotoolbox.org/x/vJD9R5RC>

جامعة خارج لبنان

<https://ee.kobotoolbox.org/x/wT4d9811>

الحصول على عقد عمل خارج لبنان

<https://ee.kobotoolbox.org/x/sAOBY3ni>

للحصول على الرابط المناسب، أرسل كلمة مبرجاً رقم الهاتف التالي 06/669584 وستصلك لائحة بجميع الروابط.

الإبلاغ عن تلقي الجرعة الأولى خارج لبنان

يمكنك الإبلاغ عن تلقي الجرعة الأولى خارج لبنان من خلال تعبئة الإستمارة التالية عبر هذا الرابط:

<https://ee.kobotoolbox.org/x/FHf9wIzP>

للحصول على الرابط المناسب، أرسل كلمة مبرجاً رقم الهاتف التالي 06/669584 وستصلك لائحة بجميع الروابط.

إذا فقدت رابط التسجيل أو رسالة الموعد

إذهب إلى <https://covax.moph.gov.lb>

إضغط على:

- إعادة إرسال الرابط عن طريق الرسائل القصيرة
- إملاء المعلومات اللازمة: الإسم الأول، تاريخ الميلاد، رقم الهاتف المحمول
- إختار نوع الرسالة القصيرة: تأكيد التسجيل/الموعد، الشهادة
- إضغط إرسال

ستتلقى بعد ذلك رسالة نصية قصيرة تحتوي على الرابط الذي تريده.

للحصول على الرابط المناسب، أرسل كلمة مبرجاً رقم الهاتف التالي 06/669584 وستصلك لائحة بجميع الروابط.

لتعديل في البيانات

تعديل في بيانات: الإسم الثلاثي، تاريخ الميلاد، بطاقة التعريف، الرقم الخليوي

تعبئة طلب تعديل البيانات الأساسية عبر هذا الرابط:

<https://ee.kobotoolbox.org/x/o2wz8TmP>

للحصول على الرابط المناسب، أرسل كلمة مبرجاً رقم الهاتف التالي 06/669584 وستصلك لائحة بجميع الروابط.

لتقديم الطلاب اللبنانيين في الخارج

يستطيع أي طالب لبناني في الخارج طلب اللقاح من خلال تعبئة الإستمارة التالية عبر هذا الرابط:

<https://ee.kobotoolbox.org/x/miQsKMZO>

للحصول على الرابط المناسب، أرسل كلمة مبرجاً رقم الهاتف التالي 06/669584 وستصلك لائحة بجميع الروابط.

لتقريب موعد الجرعة الأولى أو الثانية بداعي السفر

يمكن تقرب موعد الجرعة الأولى أو الثانية فقط في احد الحالات التالية:

يهدف إجراء عمل طبي أو يهدف السفر

<https://ee.kobotoolbox.org/x/b6gni2f> | <https://ee.kobotoolbox.org/x/IFyEYLqL>

The National Awareness Campaign to register on the Coronavirus Vaccine Platform

Does the COVID-19 vaccine provide protection against the New Delta Variant?

Studies show that in countries where the variant is spread, unvaccinated populations are more likely to be hospitalized after infection. **Two doses of the vaccine should be administered to provide protection from the Delta Variant.**

What is the Delta Variant?

It is a variant of the COVID-19 virus and the fastest spreading one. Till 9 July 2021, it has been found in 98 countries at least and is spreading rapidly among unvaccinated populations.

How can we protect ourselves from the Delta Variant?

Take the full course of vaccination to achieve full protection.

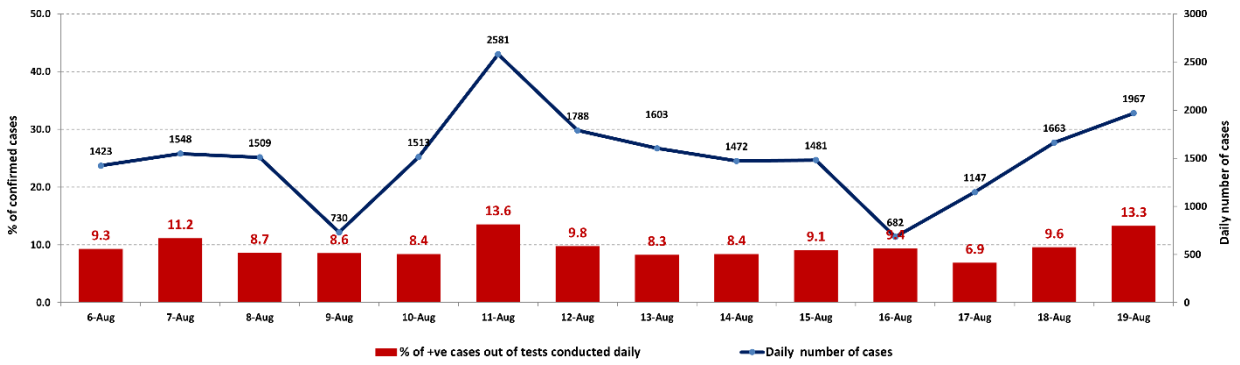
Abide by all preventive measures (safe distancing, mask wearing, hand hygiene)

Ref : Ministry of Public Health

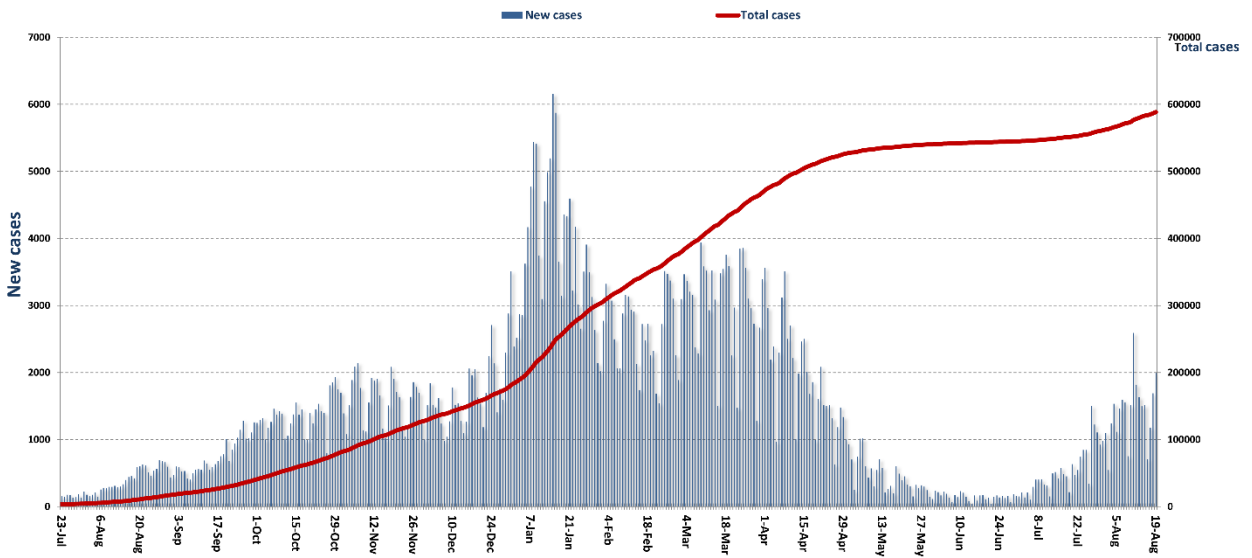
All reports and related decisions can be found at: <http://drm.pcm.gov.lb>

Or social media @DRM_Lebanon

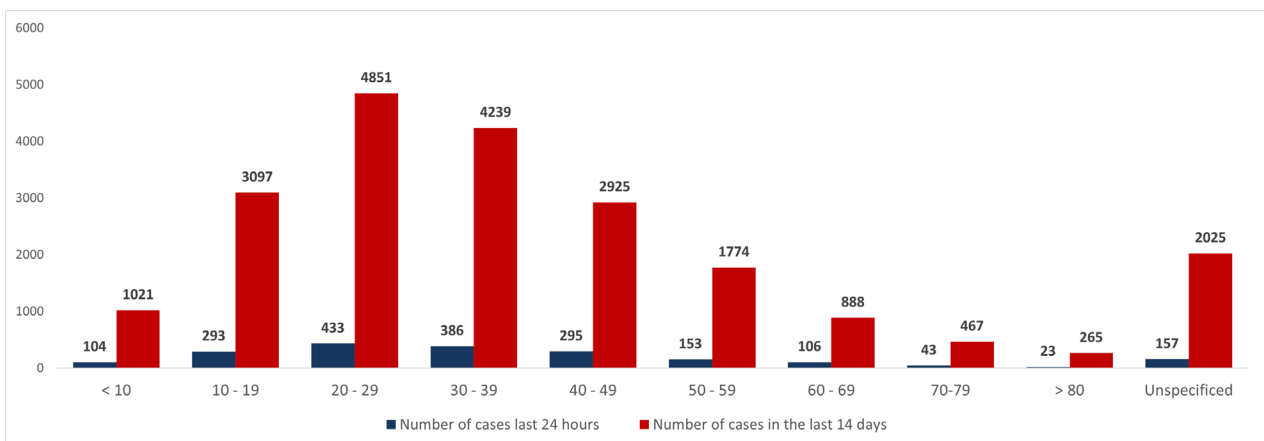
The percentage of positive cases out of the number of daily checks during the past 14 days



Cumulative cases per day



Cumulative cases by age group



Ref : Ministry of Public Health

All reports and related decisions can be found at: <http://drm.pcm.gov.lb>

Or social media @DRM_Lebanon

Decisions and actions taken during the past 24 hours

Ministry of Public Health

The Minister of Public Health held a meeting to track cases infected with Covid-19 in light of the lack of securing all medical supplies as a result of the financial situation, in the presence of representatives of UNICEF, World Health, the Lebanese Red Cross, the Syndicate of Social Work Specialists, NGOs and a number of major municipalities, and it was agreed upon. To form a working group that secures information exchange and networking with NGOs active in the health field to support the infected cases who are unable to secure the medical, health and nutritional supplies they need, in addition to psychological and social support.

Lebanese Red Cross

| Cases that have been transferred to hospitals | The number of PCR assays That have been taken to hospitals | The number of people who were transported to the vaccination centers | The number of beneficiaries Awareness seminars | Number of home visits to register COVID-19 vaccine recipients | The number of beneficiaries of the electronic platforms |
|---|--|--|--|---|---|
| 31,016 | 99,444 | 3,253 | 149,439 | 44,654 | 6,381 |

Lebanese Army Forces

- The army units continue to distribute social aid (400,000 Lebanese pounds) to families with limited income in all Lebanese territories.
- Supporting the security services in implementing the decisions issued by the Council of Ministers.
- Reporting that 471/ PCR examinations were conducted for members of the army, where it was found that there were /93/ positive cases: /51/ active service, /40/ civilian, /2/ retired, /1/ military medical

General Directorate of State Security

- Reporting the number of new positive cases in the various governorates.
- Report on the vaccination campaigns that are being implemented in various Lebanese regions through the Ministry of Public Health.

General Directorate of Internal Security Forces

51,378 written minutes have been written against violators of the decisions of general mobilization since 01/14/2021.

The total of the minutes written against the violators of the decisions of the general mobilization since 3/8/2021 are distributed according to the regions as follows:

| Minutes Since 08/03/2021 | |
|--------------------------|--------|
| Beirut | 54305 |
| Mount Lebanon | 68409 |
| Beqaa Gharby | 27728 |
| North | 21177 |
| South | 21213 |
| Total | 192832 |

General Directorate of General Security

It was reported that there were 71 injuries among the elements of the General Directorate of Public Security. Reporting the number of new positive cases in the various governorates and districts. Follow up on the procedures adopted at the air, land and sea borders in cooperation with the teams of the Ministry of Public Health.

Ministry of Public Works and Transportation

Beirut Rafik Hariri International Airport:

| Departing Flights | | Arriving Flights | |
|---------------------------------|--------|--------------------|------|
| Number of Flights | 75 | Number of Flights | 80 |
| Number of Departing Individuals | 12,196 | Number of Arrivals | 5502 |

Ports:

| Port | Entered | | | Left | | |
|--------------|----------|-----------|----------|--------|-----------|----------|
| | Import | Direction | # | Export | Direction | # |
| Tripoli | | | | Blank | Greece | 1 |
| Zahrani | Gasoline | Greece | 1 | | | |
| Total | | | 1 | | | 1 |

General Decisions / Announcements

The meeting of the Follow-up Committee on Preventive Measures and Measures for the Coronavirus, held on 12/08/2021, issued the following recommendations:

- Emphasis on the previous recommendation regarding making the necessary circulars by: the General Directorate of the Presidency of the Council of Ministers, the Ministries of Interior and Municipalities, Economy and Trade, Tourism, Public Health, Education and Higher Education and Labor in terms of the obligation to grant the vaccine to all workers in the public and private sectors Under its supervision, it is the responsibility of the persons who refuse to receive the vaccine to present a negative PCR result every 72 hours so that the material cost of the examination is at their own expense.
- Ministry of Tourism, Ministry of Interior and Municipalities - General Directorate of Internal Security Forces, General Directorate of State Security: Strict crackdown on violations related to non-compliance with hotel quarantine, subject of General Directorate of Civil Aviation Circular No. 31/2, especially against persons who deliberately leave their passports and claiming to lose it later or making fake hotel reservations
- The General Directorate of Civil Aviation: Making the necessary circular to exempt passengers who left Lebanon and want to return within a week from conducting a PCR examination in the countries from which they wish to return, if they are subject to a PCR examination upon their arrival at Rafic Hariri International Airport, as well as exempting them from the hotel quarantine in the event Their coming from one of the countries subjects of Circular No. 31/2.

The Middle East Airlines - Lebanese Airways, announced in a statement that, starting from 6/8/2021, all passengers arriving in Lebanon will be subject to the following procedures:

- Categories obligated to hotel quarantine: Passengers coming from the United Kingdom - Cyprus - Turkey - Brazil - United Arab Emirates - Iraq - India - Malawi - Ethiopia - Zambia - Liberia - Kenya - Gambia and Sierra Leone (not passengers transiting through these countries) with mandatory possession of a reservation My hotel is at their own expense, for 4 days / 3 nights in one of the approved hotels. Passengers who do not have a hotel reservation are not allowed to board the plane.
- **Categories excluded from hotel quarantine:**
 - ❖ National and foreign diplomatic missions and their families, if they adhere to the quarantine for a period of four days at their place of residence.
 - ❖ Passengers who have previously received at least one dose of any Covid-19 vaccine without a specified duration.
 - ❖ Passengers who were infected with the Corona virus and recovered from it within a period of ninety days before the date of their travel to Lebanon, after presenting an official document proving this.
 - ❖ Passengers transiting by land to Syria through Rafic Hariri International Airport - Beirut.
 - ❖ Minor passengers under 18 years of age, whether they are coming alone or accompanied by their parents.

- Categories obligated to conduct a PCR examination before coming to Lebanon: All passengers must have performed a PCR examination with the mandatory presence of a QR code in one of the approved laboratories, within a maximum of 96 hours from the date of issuance of the examination result until arriving in Lebanon and that they show the result of the examination upon registration bags. Passengers who do not have a negative test result are not allowed to board the plane coming to Lebanon
- Categories excluded from conducting a PCR examination before coming to Lebanon:
 - ❖ Passengers who have received the second dose of Covid-19 vaccine or a full dose of Covid-19 vaccine (which is only one dose), for a period of no less than two weeks.
 - ❖ Passengers who were infected with the Corona virus within a period of ninety days preceding the date of their travel to Lebanon, after presenting an official document proving this.

Note: All passengers arriving in Lebanon are subject to a PCR examination upon their arrival at Rafic Hariri International Airport - Beirut, except for children under 12 years and UNIFIL forces.

Laboratories that did not comply with the procedures approved by the MoPH About the information required to be recorded for infected cases within the past 24 hours

| Laboratories that did not specify the Governorate | |
|--|--------------|
| Laboratory/Hospitals | Cases |
| BDL003-Laboratoire Inovie / Fayyadieh | 48 |
| BDH505-Rafic Hariri University hospital | 8 |
| SDL002-Family Medical Laboratories | 5 |
| BDH562-Hospital Mont liban | 2 |
| BDH558-Hospital Rassoul Aazam | 1 |
| BDL009 - Naqaa Medical Center | 1 |
| BRH626-Hotel Dieu de France | 1 |
| BRH637-Hospital Haddad des Soeurs du Rosaire / Gemmayzeh | 1 |
| BRL019 - General Security Laboratories | 1 |

| Number of positive cases without specifying the place of residence | |
|---|--------------|
| Laboratory/Hospitals | Cases |
| BDL003-Laboratoire Inovie / Fayyadieh | 48 |
| BDH505-Rafic Hariri University hospital | 8 |
| NBL002- Salam Laboratories | 8 |
| JBL001-Laboratoire Akiki et Boulos | 5 |
| SDH418-Hospital Hammoud / Saida | 5 |
| SDL002-Family Medical Laboratories | 5 |
| AKH108-Hospital Halba Gouvernemental | 2 |
| BDH562-Hospital Mont liban | 2 |
| BDH558-Hospital Rassoul Aazam | 1 |
| BDL001- Centre Medical Moderne -Berjaoui | 1 |
| BDL009 - Naqaa Medical Center | 1 |
| BDL014 - Al Jabal Hospital | 1 |
| BRH626-Hotel Dieu de France | 1 |
| BRH630-Hospital Geitawi | 1 |
| BRH637-Hospital Haddad des Soeurs du Rosaire / Gemmayzeh | 1 |
| BRL019 - General Security Laboratories | 1 |
| CHH504-Sibline Gov. | 1 |
| MTH548-Hospital Serhal / Rabieh | 1 |
| SRL001 - Mashrek Medical Diagnostic Center MDC | 1 |

| Number of positive cases without a phone number | |
|--|--------------|
| Laboratory/Hospitals | Cases |
| BDL002-Hadi Laboratory/ Haret Hreik | 2 |
| BDH558-Hospital Rassoul Aazam | 2 |
| BDH505-Rafic Hariri University hospital | 1 |
| KWL004 - Laboratoire CHLELA | 1 |
| SRL001 - Mashrek Medical Diagnostic Center MDC | 1 |

A list of the laboratories accredited by the MoPH to conduct PCR tests

المختبرات الحكومية المؤهلة لإجراء التشخيص المخبري لفيروس كورونا بطريقة الـ RT-PCR

| المختبر | الموقع |
|---|----------|
| مستشفى رفيق الحريري الجامعي RHUH | بيروت |
| Halba Governmental Hospital مستشفى حلبا الحكومي | حلبا |
| Minieh Governmental Hospital مستشفى المنية الحكومي | المنية |
| Tripoli Governmental Hospital مستشفى طرابلس الحكومي | طرابلس |
| Batroun Governmental Hospital مستشفى البترون الحكومي | البترون |
| Ftough Keserwan Gov. Hospital مستشفى فتوح كسروان الحكومي (البوار) | كسروان |
| Seblin Governmental Hospital مستشفى سبلين الحكومي | سبلين |
| Saida Governmental Hospital مستشفى صيدا الحكومي | صيда |
| Nabih Berri Gov. Hospital مستشفى نبيه بري الحكومي الجامعي | التبليّة |
| Tebnine Governmental Hospital مستشفى تبنين الحكومي | تبنين |
| Bent Jbeil Governmental Hospital مستشفى بنت جبيل الحكومي | بنت جبيل |
| Baalbeck Governmental Hospital مستشفى بعلبك الحكومي | بعلبك |
| Hermel Governmental Hospital مستشفى الهرمل الحكومي | الهرمل |
| Prés. Elias Hrawi Gov. Hospital مستشفى الرئيس إلياس الهراوي الحكومي | زحلة |
| Baabda University Gov. Hospital مستشفى بعبدا الحكومي الجامعي | بعبدا |
| Marjeyoun Governmental Hospital مستشفى مرجعيون الحكومي | مرجعيون |

المختبرات الخاصة المؤهلة لإجراء التشخيص المخبري لفيروس كورونا بطريقة الـ RT-PCR

| المختبر | الموقع |
|--|--------------|
| مستشفى الجامعة الأميركية AUBMC | بيروت |
| Hotel-Dieu de France (HDF) مستشفى أوتيل ديو الجامعي | بيروت |
| مختبرات رودولف ميريو (الجامعة اليسوعية - المتحف) Laboratoire Rodolphe Mérieux (Université Saint-Joseph) | بيروت |
| Saint-George Hospital - UMC مستشفى القديس جاورجيوس الجامعي | بيروت |
| Makassed General Hospital مستشفى المقاصد | بيروت |
| LAU Medical Center - Rizk Hospital مستشفى رزق الجامعي | بيروت |
| Hôpital Libanais Geitawi - CHU مستشفى اللبناني الجعيتاوي الجامعي | بيروت |
| Hôpital Notre-Dame du Rosaire مستشفى الوردية | بيروت |
| Clemenceau Medical Center (CMC) مركز كليمنصو الطبي | بيروت |
| Doctor's Center مختبر مركز الأطباء | بيروت |
| Fontana Laboratories مختبر فونتانا (الحمرا) | بيروت |
| General Security Lab مختبر الأمن العام (العدلية) | بيروت |
| CEMA مختبر سيما | بيروت |
| Laboratoire Jabre-Ghorra مختبرات جبر وغزة | بيروت |
| Saint Marc Medical & Diagnostic Center مختبر السان مارك | بيروت |
| PHD مختبر | بيروت |
| Saint Joseph Medical Center - الأشرافية - المختبر مركز مار يوسف الطبي - Ashrafieh | بيروت |
| Bey Lab – Furn El Chebbak مختبر باي لاب | فرن الشباك |
| Laboratoire Moderne (Modern Lab- Berjaoui) المختبرات الحديثة | الغبيري |
| Sahel General Hospital (SGH) مستشفى الساحل | الغبيري |
| Al Zahraa Hospital – UMC مستشفى الزهراء الجامعي | الغبيري |
| Al Rassoul Al Aazam Hospital مستشفى الرسول الأعظم | برج البراجنة |
| Bahman Hospital مستشفى بهمن | حارة حريك |
| مختبر ناتيونال دياغنوستك سرفيس كومباني National Diagnostic Services Company (NDSC) | حارة حريك |

| | |
|---|-----------|
| مختبر مركز دار الحوراء | حارة حريك |
| Medical Diagnostic Center مختبر الدكتور محمود عثمان مركز التحاليل الطبية | المريجة |
| American Diagnostic Center (ADC) مختبر أميريكين دياغنوستيك سنتر | الجناح |
| Mount Lebanon Hospital مستشفى جبل لبنان | بعيدا |
| Hôpital Saint-Georges – Hadath مستشفى السان جورج الحدث | بعيدا |
| Al Hadi Laboratory مختبر الهادي | بعيدا |
| INOVIE-Liban مختبر | بعيدا |
| Molecular Biology and Cancer مختبر علم الأحياء الجزيئية في الجامعة اللبنانية | الحدث |
| Immunology Laboratory in Lebanese University مختبر سان ميشال للتحاليل الطبية | ضبية |
| Saint-Michel Lab مختبر سان ميشال للتحاليل الطبية | الحازمية |
| Hôpital du Sacré- Coeur مستشفى قلب يسوع | الحازمية |
| Clinigene مختبر كلينيجان | المتن |
| Hôpital Dr.Samir Serhal مستشفى سرحال | المتن |
| Transmedical for Life مختبر ترانسيميديكال فور ليف | المتن |
| Hôpital St. Joseph – Dora مستشفى مار يوسف - الدورة | المتن |
| Centre Hospitalier de Bhannes مستشفى مركز بحس الطبي- ضهر الصوان | المتن |
| Haroun Hospital مستشفى هارون | الزلقا |
| Hôpital Abou Jawdeh مستشفى أبو جودة | الزلقا |
| Bellevue Medical Center (BMC) مستشفى بلفو | المنصورية |
| Middle East Institute of Health (MEIH) مختبر مركز الشرق الأوسط الصحي | بصاليم |
| Hôpital Albert Haykal مستشفى هيكل | الكورة |
| University of Balamand مختبر جامعة البلمند | الكورة |
| Centre Hospitalier du Nord (CHN) مركز الشمال الإستشفائي | زغرنا |
| Saydet Zghorta University Medical Center سيدة زغرنا المركز الجامعي الطبي | زغرنا |
| Family Medical Center- Zgharta المركز العائلي الطبي | زغرنا |
| مستشفى دار السلام | القييات |
| Mazloum Hospital مستشفى المظلوم | طرابلس |
| Al Mounla Hospital مستشفى المنلا | طرابلس |
| Nini Hospital مستشفى النيني | طرابلس |
| مختبر ميكروبيولوجيا الصحة والبيئة LMSE - المعهد العالي للدكتوراه، الجامعة اللبنانية | طرابلس |
| مختبر المستشفى الإسلامي الخيري - طرابلس | طرابلس |
| Dar El Chifaa Hospital مختبر مستشفى دار الشفاء | طرابلس |
| CHU - Notre-Dame des Secours مستشفى سيدة المعونات الجامعي | جبيل |
| Laboratoires Akiki & Boulos مختبر عقيقي وبولس | جبيل |
| Laboratoire Dr. Chelala مختبرات الدكتور شلالا | غزير |
| Centre Médical Wakim مختبر واكيم | جونية |
| Elite Medical Center - Jeita مختبر إيليت الطبي - جعيتا | جعيتا |
| Ain Wazein Hospital مستشفى عين وزين | الشوف |
| Eva Lab مختبر إيفا لاب | عرمون |
| Hammoud Hospital UMC مستشفى حمود الجامعي | صيدا |
| Al Karim Medical Laboratory (KML) مختبر الكريم | صيدا |
| Labib Medical Center مختبر مركز لبيب الطبي | صيدا |
| Lebanese Diagnostic Center (LDC) مختبر الـ | صور |
| Family Medical Laboratories مختبر العائلة | الغازية |
| Sheikh Ragheb Harb Hospital مستشفى الشيخ راغب حرب | النبطية |
| Laboratoires Sabbah d'Analyses Médicales مختبرات الصباح | النبطية |
| Laboratoires Al Salam مختبر السلام | النبطية |
| Hôpital du Secours Populaire مختبر مستشفى النجدة الشعبية - النبطية | النبطية |
| Jabal Amel Hospital مستشفى جبل عامل | صور |
| Mashrek Diagnostic Center (MDC) مختبر المشرق للتشخيص الطبي | صور |

| | |
|---|---------|
| مختبرات دلتا Delta Laboratories | صور |
| مختبر الدكتور حسن علوية Dr. Hassan Alawiyyeh Laboratory | صور |
| مستشفى دار الحكمة Dar Al Hikmah Hospital | بعلبك |
| مستشفى دار الأمل الجامعي Dar Al Amal University Hospital | بعلبك |
| مختبرات العناية الطبية Medical Care Laboratories – Baalbeck | بعلبك |
| مختبرات العناية الطبية Medical Care Laboratories - Labweh | البويرة |
| مستشفى تلّ شيحا Tall Chiha Hospital | زحلة |
| مستشفى خوري Khoury Hospital | زحلة |
| مختبر ميديكال كير سنتر Medical Care Center (MCC) | زحلة |
| مستشفى اللبناني الفرنسي Hôpital Libano-Français | زحلة |
| مستشفى الرياق Hôpital El Rayak | الرياق |
| مستشفى شتورة Chtoura Hospital | شتورة |

مختبرات المستشفيات العسكرية

| | |
|---|-------|
| المستشفى العسكري المركزي في بيروت Laboratoire Militaire Central | بيروت |
|---|-------|

المختبرات المؤهلة لأخذ عينات "المسحات الأنفية" بطريقة Drive- thru

| | |
|--|-----------|
| مختبر ميديكال دياغنوستيك تريتمان سنتر (الحمراء) Medical Diagnostic Treatment Center (MDTC) | بيروت |
| مختبر ميد لاب MedLab SAL CIC ALS (الحمراء – الجعقنور) | بيروت |
| مختبرات عيتاني Itani Medical Laboratories (المزرعة) | بيروت |
| مختبر ساقية الجزير Sakiet Al Janzir Laboratories (رامس بيروت) | بيروت |
| مختبر أ ب سي ABC Laboratories | بيروت |
| مختبرات معوض الطبية Mouawad Medical Laboratory | الشيح |
| مختبرات الشياح (د. فواد ربحان) Rihan Medical Center | الشيح |
| مختبرات المتحدة للرعاية الصحية United Healthcare Laboratory | الشيح |
| مختبر النقاء الطبي Al Naqaa Medical Center | الأوزاعي |
| مختبرات البوليفار Laboratoire le Boulevard | بدارو |
| مركز اليوسف الإستشفائي التعليمي CHU Al - Youssef | حلبا |
| مستشفى الكورة Hôpital El Koura | الكورة |
| مركز كسروان الطبي Keserwan Medical Center | كسروان |
| مختبر إكسبرت لاب Expert Lab | المنصورية |
| مختبر سانت ايلي Saint-Elie Laboratory | أنطلياس |
| مختبر ب م ب BMP Laboratory | نوق مصبح |
| مختبر الدكتور ايلي طالب Laboratoire Dr. Elie Taleb | جونية |
| مختبرات الشرق الأوسط للتحاليل الطبية Memer Lab | جونية |
| مختبر Family Clinic | صيدا |
| مختبر فيرست لاب First Lab | العاقية |
| مختبرات الرياض الطبية Al Riyad Medical Laboratory | جب جنين |
| مختبر مركز التشخيص الطبي ADC | جب جنين |
| مختبر لايف لاب Life LAB | بعلبك |
| مختبر مركز البقاع الطبي | زحلة |
| مختبرات السان جورج Laboratoires Saint George | زحلة |
| مختبرات العربي الطبية Araïbi Medical Laboratories | رياق |
| مختبر مستشفى البقاع | البقاع |