

Lebanon National Operations Room



Daily Report on COVID-19

Monday. 17 May.2021

Report #414

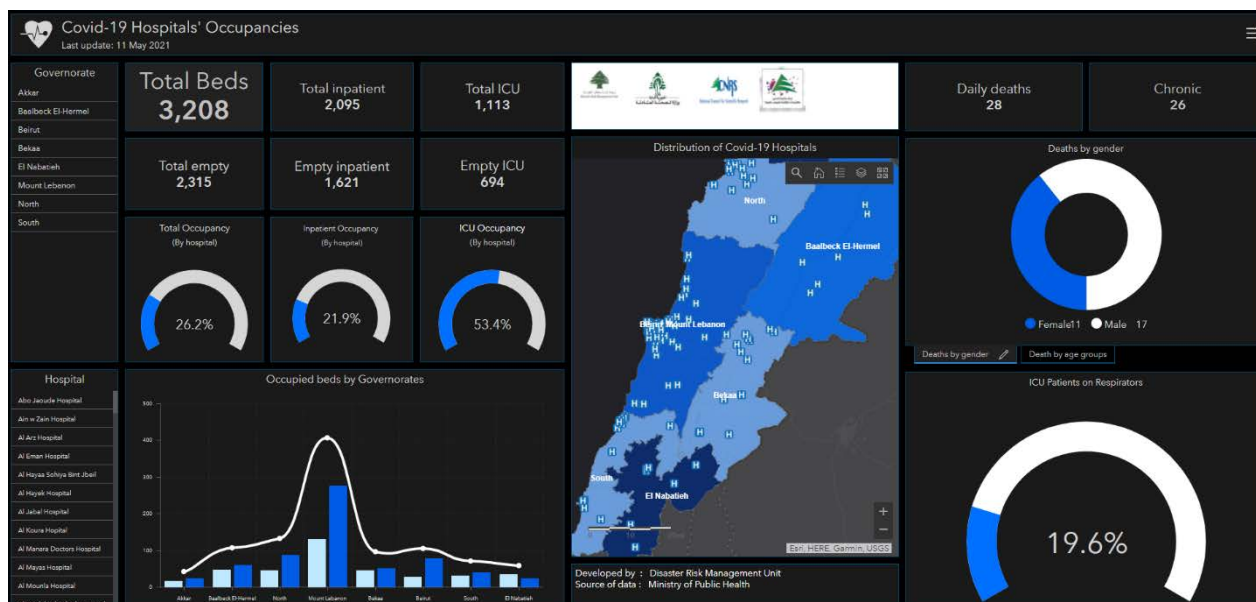
Time Published: 9:30 PM

(Report include data of Saturday & Sunday)

Cases Situation				Saturday (15 May)	Sunday (16 May)	Cumulative	Covid-19 Beds Capacity		Sat	Sun
Cases in Lebanon				307	201	535,954	Hospitalized Cases		630	577
Local Cases				304	195	530,528	Cases in ICU		343	323
Expats Cases				3	6	5,426	Ventilated Cases		106	99
Deaths Cases				18	11	7,631	Testing		Sat	Sun
Health Sector Cases				0	0	2,697	Cumulative PCR's		12,336	10,927
Vaccination	Last 24 hours	Cumulative	Per /Population	Lebanon Status compared to the World   Total Cumulative: 535,954 / 164,068,626 Total Deaths: 7,631 / 3,399,355 Deaths percentage: 1.42 % / 2.07 % Total recoveries: 500,872 / 142,702,164			COVID-19 tests for residents within 24 hrs.		6,985	5,971
	Registered	4,280	1,352,041				COVID-19 Tests at Airport within 24 hrs.		4,894	4,388
	1st Dose	1,891	375,219				Total Tests since 21.2.2020		4,221,099	
	2nd Dose	57	190,459				Total Recoveries		500,872	
							Deleted Status due to its recurrence		32	
							positive examinations /100 in the past 14 days		6%	

Ref: Ministry of Public Health Data

Occupancy rate of COVID-19 Beds and Availability



For daily information on all the details of the bed's distribution availability for Covid-19 patients among all governorates and according to hospitals, kindly check the dashboard link:

Computer: <https://bit.ly/DRM-HospitalsOccupancy-PCPhone> Mobile: <https://bit.ly/DRM-HospitalsOccupancy-Mobile>

Distribution by Villages

Beirut	67	Baabda	48	Maten	85	Chouf	23	Tripoli	4	Baalbek	6
Raoucheh	1	Chiyah	3	Borj Hammoud	3	Damour	1	Ez Zeitoun	2	Baalbek	4
Hamra	3	Jnah	1	Sinn Fil	2	Naameh	1	El Qoubbeh	2	Ain Bourday	1
Ain Tineh	5	Ouzaai	1	Jdaidet Matn	7	Barja	1	Koura	3	Laboueh	1
Msaitbeh	2	Bir Hassan	2	Baouchriyeh	1	Dibbiyeh	1	Amioun	2	Temnine Et Tahta	1
Tallet Khayat	2	Mahatet Sfair	1	Sadd Baouchriyeh	1	Douair El Hara	1	Kfar Aaqqa	1	Saida	33
Zarif	4	Ghbayreh	2	Sabtiyeh	1	Jadra	3	Zgharta	2	Saida El Ouastani	1
Mazraa	4	Ain Roummaneh	4	Dekouaneh	14	Ouardaniyeh	1	Kfar Yachit	2	Saida El Qadimeh	14
Borj Abou Haidar	3	Haret Hreik	4	Antelias	1	Joun	2	Batroun	4	Haret Saida	2
Basta Faouqa	3	Borj Brajneh	7	Naqqach	2	Kfar Him	2	Batroun	3	Ain El Heloueh	3
Tariq Jdideh	13	Mreijeh	2	Zalqa	2	Jahliyah	1	Chikka	1	Bqosta	1
Ras Nabaa	2	Tahouitat Ghadir	1	Byaqout	2	Others	1	Akkar	6	Ghaziyeh	2
Basta Tahta	2	Baabda	4	Dbayeh	4	Aleyh	36	Aarida	2	Kharayeb	1
Gemmaizeh	1	Hazmiyeh	1	Mansouriyeh	4	El Aamroussiyeh	2	Tleil	1	Ghassaniyeh	1
Mar Mikhayel Nahr	2	Fayadiyeh	1	Fanar	12	Hay Es Sellom	2	Qbaiyat	1	Bissariyeh	2
Rmeil	3	Mar Taqla	2	Rabiyeh	1	El Qoubbeh	1	Akroum	1	Es Siyad	1
Achrafiyeh	7	Hadath	4	Beit Ech Chaar	3	Choueifat El Oumara	6	Others	1	Teffahta	1
Others	10	Saqi Hadath	1	Mazraat Yachouaa	3	Aaramoun	6	Minieh Dunieh	3	Others	4
Nabatieh	45	Jamhour Louaizeh	1	Bikfaya	3	Bchamoun	4	Minieh	1	Tyre	35
Nabatiyeh Et Tahta	1	Ouadi Chahrour	2	Mar Boutros Karm	1	Aaley	7	Sir Ed Danniyeh	1	Sour	4
Kfar Roummane	4	Hlaliyeh	1	Beit Chabab	2	Kahhaleh	4	Markebta	1	Borj Ech Chemali	2
Choukine	1	Qsaibeh	1	Ain Kharroubeh	1	Bhamdoun Ed Dayaa	2	Zahleh	20	Jouaiya	1
Habbouch	2	Zandouqa	1	Broummana	5	Saoufar	1	Zahleh El Midane	1	Mjadel	2
Kfour	2	Falougha	1	Rouayseh	1	Others	1	Zahleh El Maallaqa	1	Aaytit	1
Ain Qana	1	Bnt Jbeil	39	Baabdat	1	Kesrwen	20	Haouch El Oumara	5	Maarakeh	4
Aarab Salim	3	Bent Jbayl	3	Beit Meri	1	Jounieh Kaslik	1	Zahleh Mar Elias	2	Saddiqine	1
Zefta	1	Aaytaroun	1	Monteverdi	1	Zouk Mkayel	2	Hazerta	1	Bazouriyeh	4
Deir Ez Zahrani	3	Aayta Ech Chaab	1	Dahr Es Souane	1	Zouk Mosbeh	3	Chtaura	2	Tayr Debba	3
Charqiyeh	3	Tibnine	1	Mrouj	1	Jounieh Sahel Aalma	1	Makseh	2	Chehabiye	6
Toul	1	Soultaniyeh	1	Qaaqour	1	Bouar	2	Taalabaya	1	Chehour	1
Nmairiyeh	1	Aayta Ej Jabal	1	Bteghrine	3	Aajaltoun	1	Qabb Elias	2	Kneisseh	1
Harouf	4	Chagra	3	Marjaayoun	20	Ballouneh	1	Mrayjat	1	Halloussiyeh	1
Douair	1	Haddatha	5	Marjaayoun	1	Shayleh	1	Majdel Aanjar	2	Bedias	1
Jibchit	1	Khirbet Selm	1	Blat	1	Jaaita	1	Beqaa Gharby	2	Chaaitiyeh	1
Mayfadoun	3	Hariss	1	Khiyam	5	Ghazir	1	Kamed El Laouz	1	Chamaa	1
Aabba	1	Kfar Dounine	2	Houla	1	Kfar Hbab	1	Yohmor	1	Others	1
Qaaqaiyet Ej Jisr	1	Kounine	1	Meiss Ej Jabal	4	Aachqout	1				
Kfar Sir	2	Kafra	2	Qantara	1	Kfar Dibiane	1				
Yohmor	1	Borj Qalaouiye	4	Majdel Selm	3	Faraya	3				
Sir El Gharbiyeh	1	Srobbine	2	Souaneh	2	Jbeil	2				
Others	7	Yater	1	Blida	2	Halate	1				
		Others	9			Others	1			Others	12

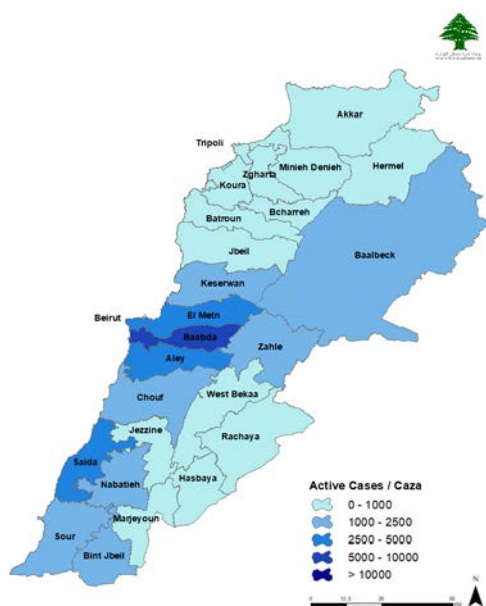
Ref : Ministry of Public Health

All reports and related decisions can be found at: <http://drm.pcm.gov.lb>

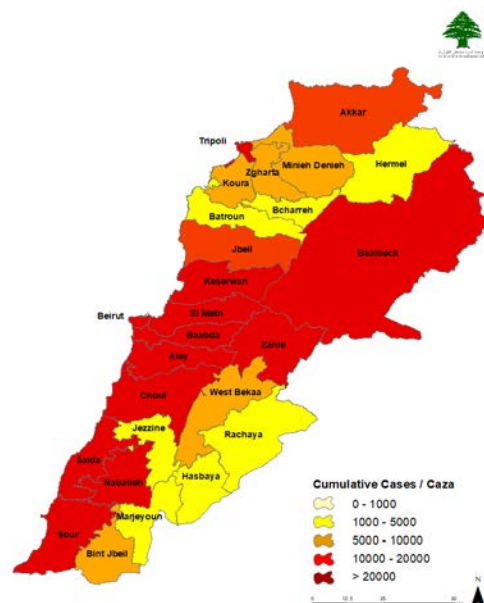
Or social media @DRM_Lebanon

Distribution of Active and Cumulative Cases

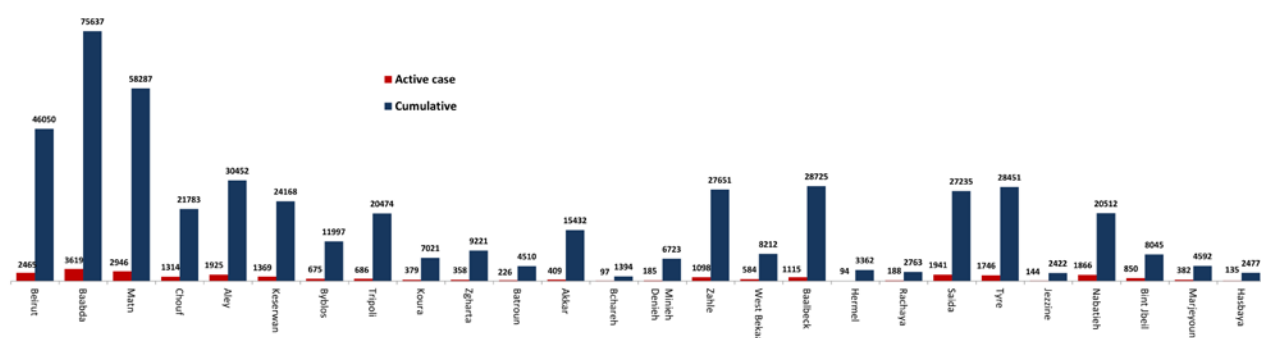
Distribution of Active Cases



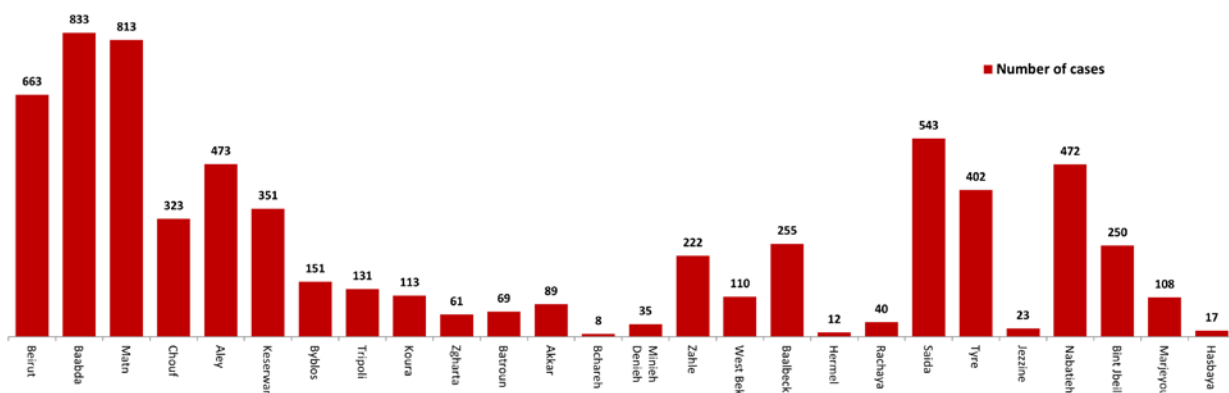
Distribution of Cumulative Cases



Number of Cases by Location



Number of cumulative cases for the last 14 days



Ref : Ministry of Public Health

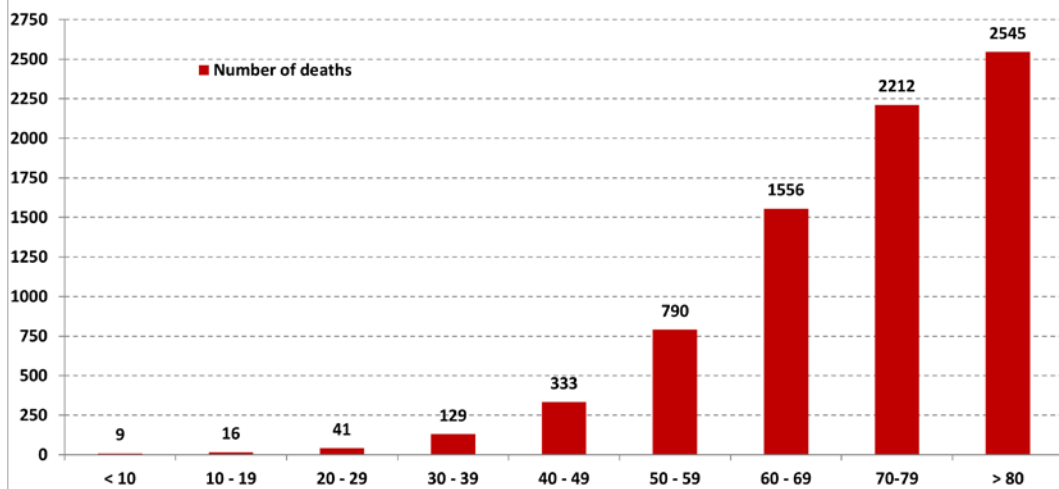
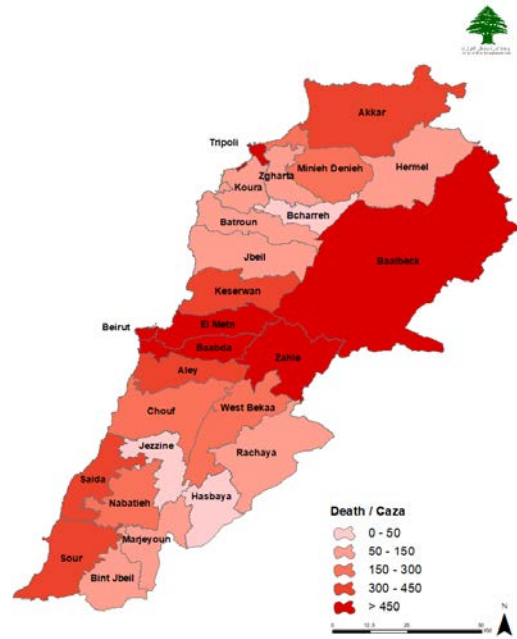
All reports and related decisions can be found at: <http://drm.pcm.gov.lb>

Or social media @DRM_Lebanon

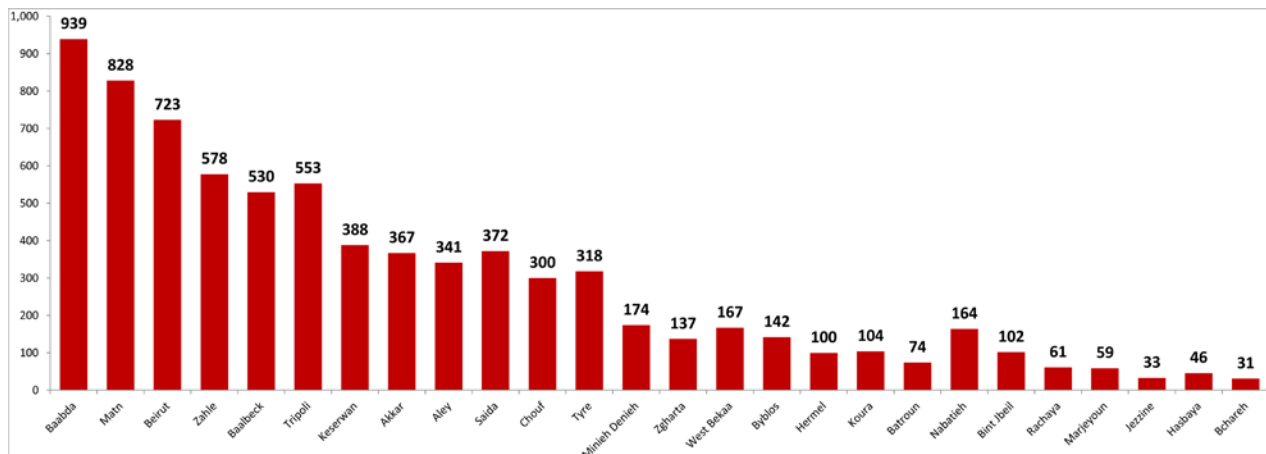
Distribution of Death Cases

Distribution of deaths during the past 72 hours

Hospital	Residence	Gender	Age	Chronic
16/05/2021				
Mazloum Hosp	Tripoli	Male	41	Yes
Salam Hosp	Koura	Female	46	No
Saint George Hadath	Baabda	Male	53	Yes
Jabel Amel Hosp	Tyre	Male	55	Yes
Tripoli Gov Hosp	Tripoli	Male	61	Yes
Saint George Roum	Maten	Female	67	Yes
Baalbek Gov Hosp	Baalbek	Female	69	Yes
Taanail Hosp	Zahleh	Female	71	Yes
Mazloum Hosp	Tripoli	Male	71	Yes
Islamic Hosp	Akkar	Male	73	Yes
Rachaiya Hosp	Hasbaya	Male	75	No
Haroun Hosp	Maten	Female	76	Yes
Saint George Roum	Baabda	Male	76	Yes
Al Jabel Hosp	Baabda	Female	80	Yes
Bnt Jbil Gov Hosp	Bnt Jbeil	Male	80	Yes
Ossairan Hosp	Baabda	Male	81	Yes
Manala Hosp	Tripoli	Male	81	Yes
Middle East Inst	Maten	Female	96	Yes
17/05/2021				
Saint George Hadath	Baabda	Female	44	Yes
Makkassad Hosp	Beirut	Female	56	Yes
Saint George Hadath	Chouf	Male	66	Yes
Bahman Hosp	Beirut	Male	67	Yes
AUBMC	Beirut	Female	69	Yes
Military Hosp	Akkar	Male	69	Yes
Hayram Hosp	Tyre	Male	69	Yes
Saydet Mawnet Hosp	Zgharta	Female	72	Yes
Saint George Hadath	Baabda	Female	74	Yes
Al Nineh Hosp	Tripoli	Male	74	Yes
Makkassad Hosp	Beirut	Male	83	Yes



Distribution of deaths by Governorate

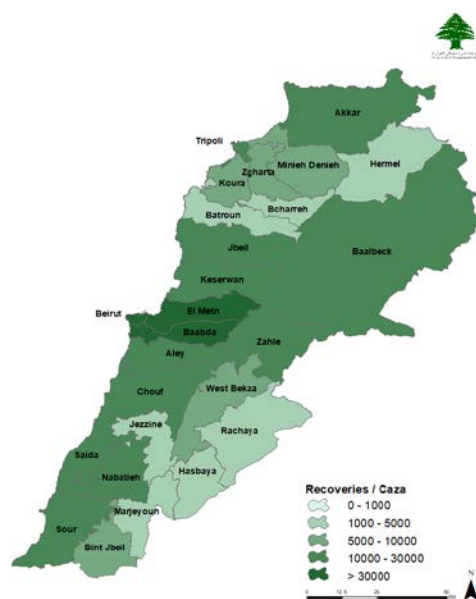


Ref : Ministry of Public Health

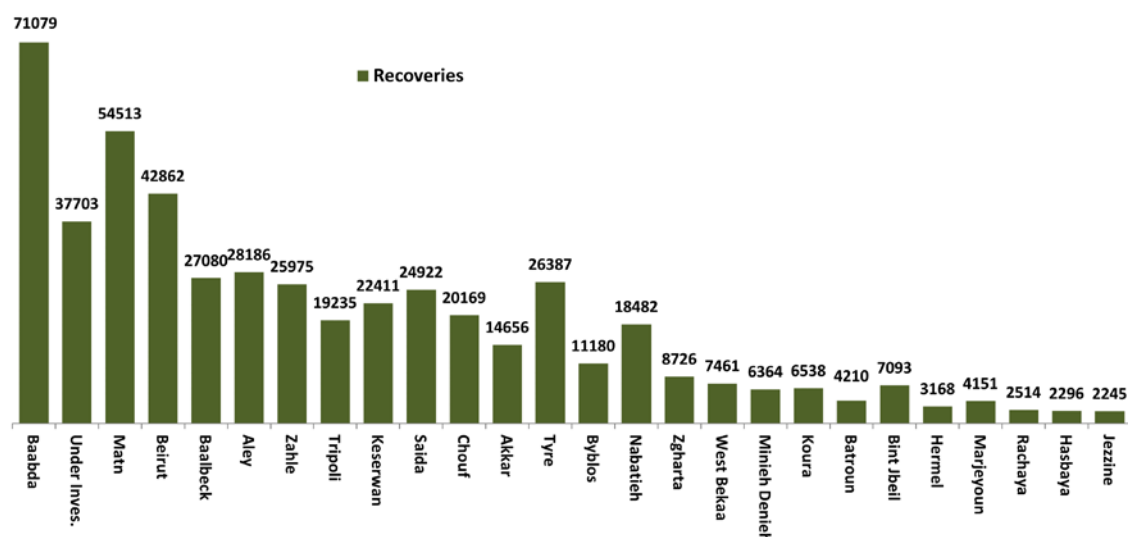
All reports and related decisions can be found at: <http://drm.pcm.gov.lb>

Or social media @DRM_Lebanon

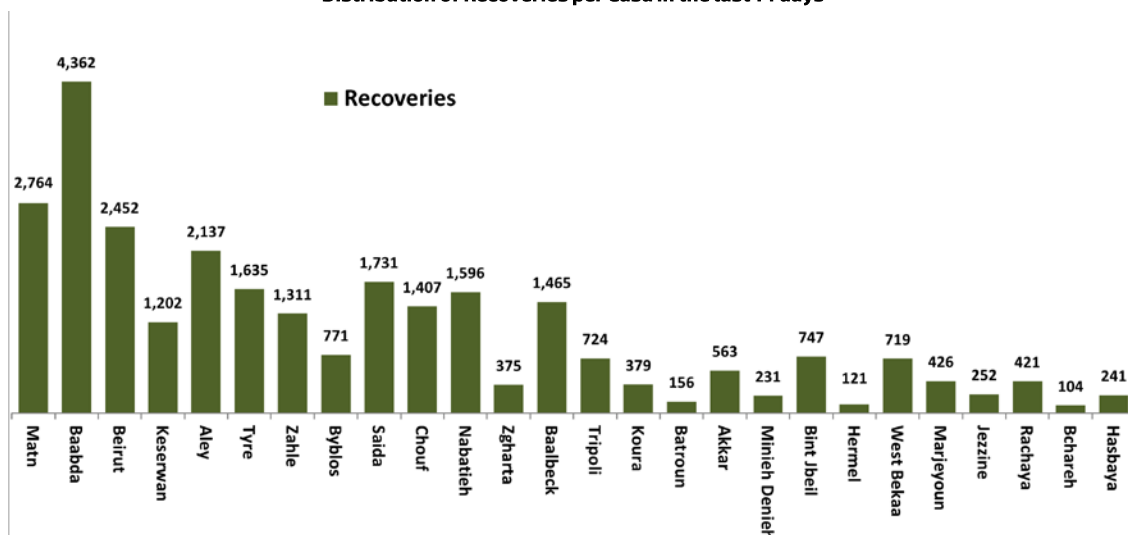
Distribution of Recoveries



Distribution of Recoveries per Casa



Distribution of Recoveries per Casa in the last 14 days



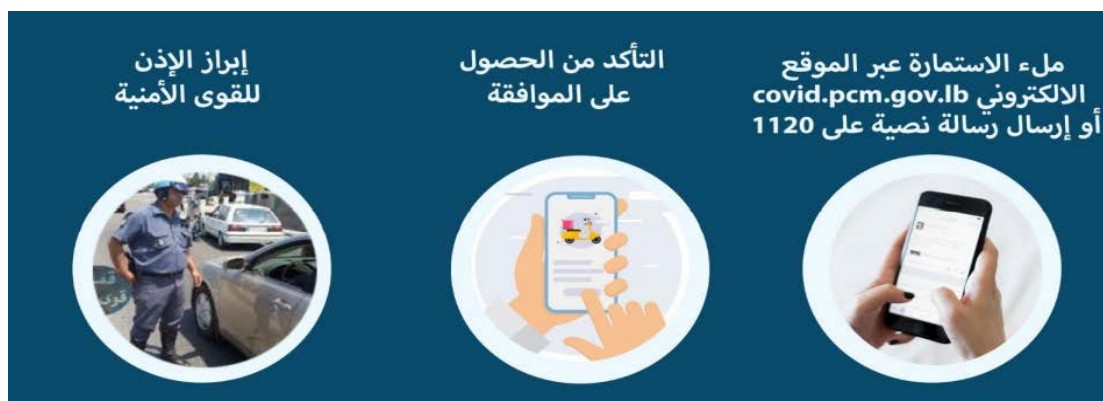
Ref : Ministry of Public Health

All reports and related decisions can be found at: <http://drm.pcm.gov.lb>

Or social media @DRM_Lebanon

Follow-up of citizens' mobility requests during the complete closure period according to the permission request mechanism via the IMPACT platform at the Ministry of Interior and Municipalities

<p>sms received</p> <p>0 Count</p>	<p>77 طلب إذن خاص للتنقل</p>
<p>sms good format</p> <p>75 sms - Count</p>	<p>...خاص المستثنون من قرار الإقفال العام</p> <p>0 Count</p> <p>للأشخاص غير المشمولين</p> <p>77 عدد</p>
<p>sms state</p> <p>75 قيد المراجعة - Count</p>	<p>حالة طلب التنقل للأشخاص غير المشمولين</p> <p>77 قيد المراجعة - Count</p>
<p>sms received (unique)</p> <p>0 Unique count of sms_received_phone.keyword</p>	<p>unique - طلب إذن خاص للتنقل</p> <p>65 Unique count of curfew_mobility_request_mobile_number.keyword</p>



Decision No. 26 / M / P of 11/1/2021 - Request for permission to move persons not covered by the general closure exceptions: Via the website COVID.PCM.GOV.LB or by sending an SMS to 1120

The online platform for registering the taking of the Coronavirus vaccine

استمارة التسجيل لأخذ اللقاح المضاد لفيروس كورونا (كوفيد-19)
Covid-19 Vaccine pre-registration form

الجمهورية اللبنانية
وزارة الصحة العامة

<https://covax.moph.gov.lb>

IMPACT

الرجاء تحديد الفئة التي تنتمي إليها من بين الفئات المدرجة في القائمة أدناه
Please select to which category you belong among the ones listed below

فئات أخرى
Other

عامل في القطاع الصحي
Healthcare worker

Ref : Ministry of Public Health

All reports and related decisions can be found at: <http://drm.pcm.gov.lb>

Or social media @DRM_Lebanon

There is currently no mechanism for getting the vaccine through a private doctor. The mechanism used is getting the vaccine at vaccination centers approved by the Ministry of Public Health. This mechanism guarantees obtaining a vaccination certificate.

Logos at the bottom: Ministry of Public Health, Ministry of Information, World Health Organization, UNICEF, and others.

نتجنب معانقة ومصافحة الآخرين
نستخدم السلام من بعيد أو نلصق إيدينا على قلبنا.

Logos at the bottom: Ministry of Public Health, Ministry of Information, and others.

نلتزم بالإجراءات الوقائية:

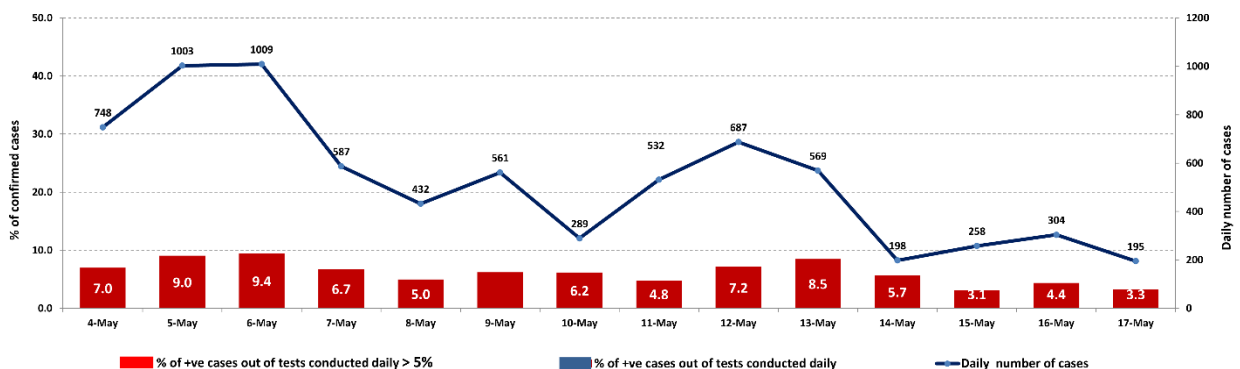
- غسل اليدين بالماء والصابون
- الحفاظ على المسافة الآمنة 1.5 متر
- ارتداء الكمامة بطريقة صحيحة

Logos at the bottom: Ministry of Public Health, Ministry of Information, and others.

نتجنب الزيارات والتجمعات، ونستخدمها بالتصالات هاتفية.

Logos at the bottom: Ministry of Public Health, Ministry of Information, and others.

The percentage of positive cases out of the number of daily checks during the past 14 days

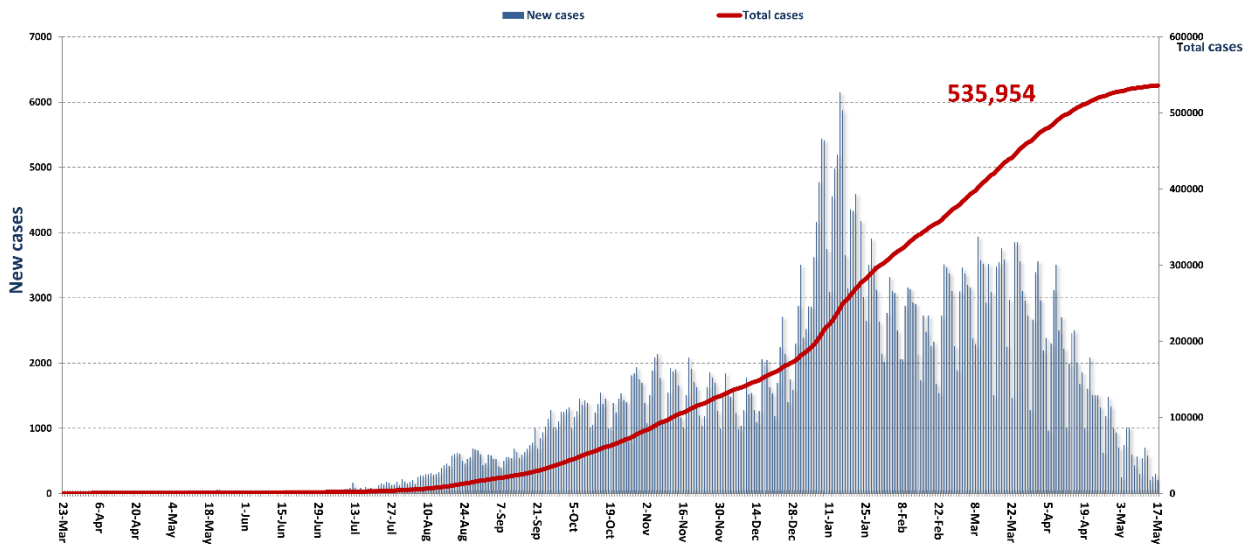


Ref : Ministry of Public Health

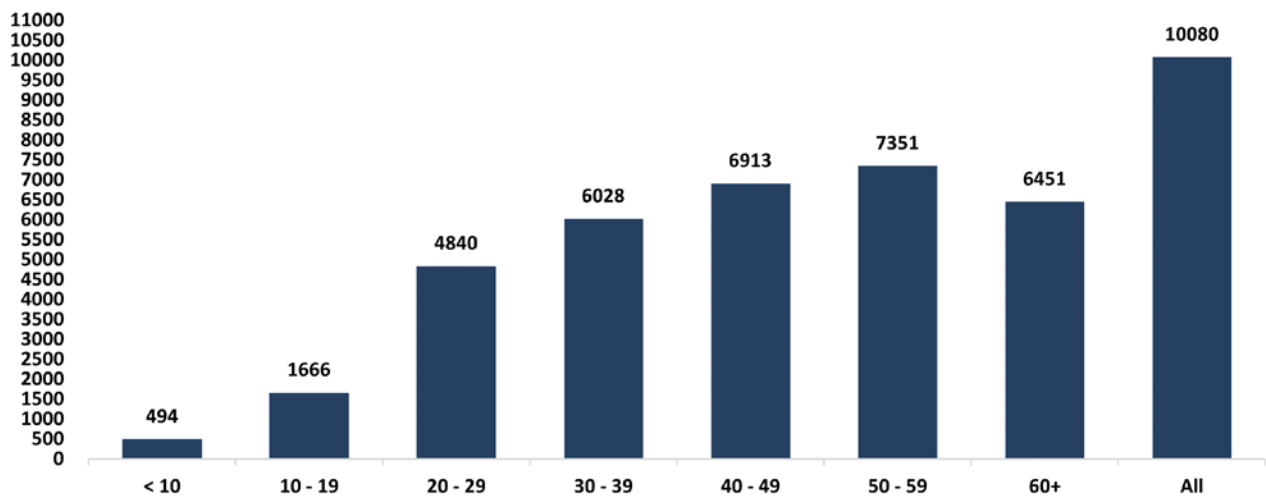
All reports and related decisions can be found at: <http://drm.pcm.gov.lb>

Or social media @DRM_Lebanon

Cumulative cases per day



Age-Specific Cumulative Incidence rate (/100000)

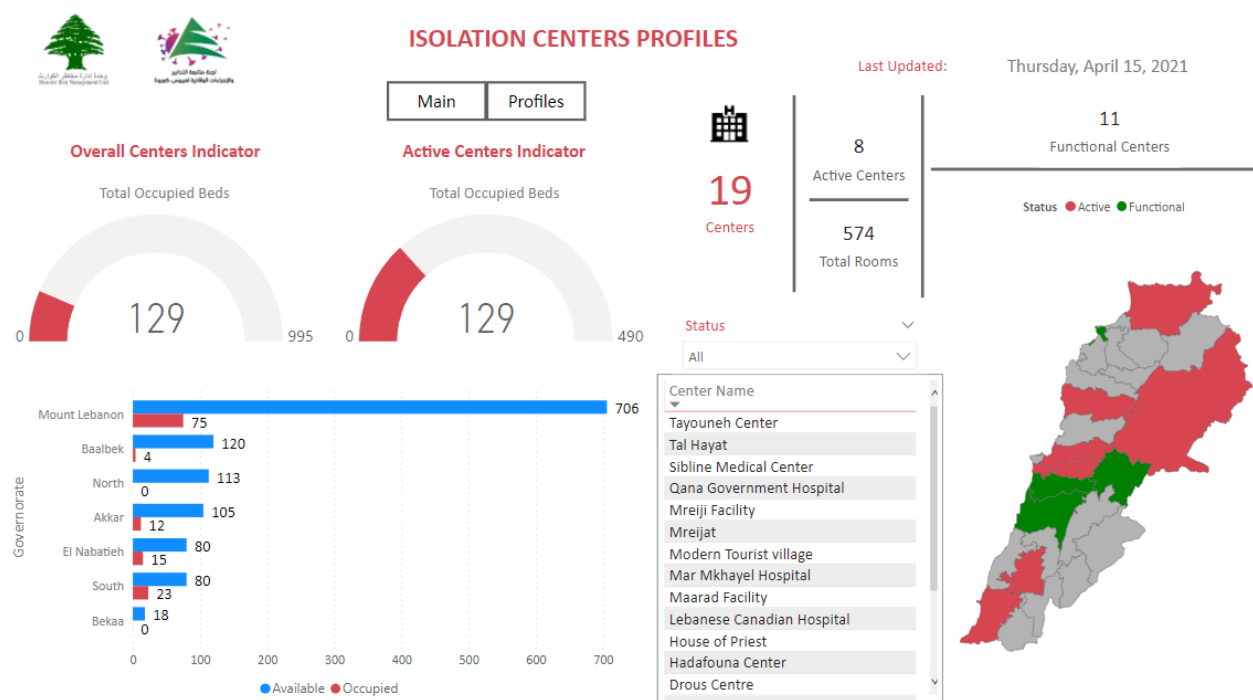


Ref : Ministry of Public Health

All reports and related decisions can be found at: <http://drm.pcm.gov.lb>

Or social media @DRM_Lebanon

Occupancy rate of isolation centers for cases infected with Corona virus



For more information about the isolation centers' distribution and the percentage of their occupancy, enter the following link: <http://bit.ly/DRM-IsolationCentersProfiles>

Note: These centers have been equipped in cooperation with the National Committee for Follow-up of Preventive Measures and Measures to Confront Coronavirus, Governors and Municipalities, the United Nations Development Program, the World Health Organization, UNICEF, the Ministry of Public Health, the Syndicate of Nurses in Lebanon, and the Syndicate of Specialists in Social Work

Decisions and actions taken during the past 48 hours

Ministry of Public Health

The Ministry of Public Health announced the arrival of the 14th batch of Pfizer vaccines, which contain 46,800 vaccines.

The Ministry of Public Health announced the start of targeting new age groups from the Pfizer vaccine for those aged between 55 and 59 years, with other age groups being targeted next week.

The Ministry of Public Health announced, in a statement, that it will conduct PCR tests every Tuesday in the building of the Union of Municipalities of Baalbek, for contacts in the Baalbek Drive thru district, between 10 am and 12 noon. She asked the person in contact or showing symptoms to call 1787 to register their name and answer the questions asked, to set a date for the PCR examination, and called on the municipalities to announce the appropriate methods to reach the largest number of residents of the region.

The Ministry of Public Health reported that PCR examinations had been completed on flights that arrived in Beirut and were performed at the airport on May 12 and 13; The results are shown:

12/05/2021				15/05/2021			
Direct	Company	Flight	Cases	Direct	Company	Flight	Cases
Sharqah	G9	385	1	Baghadad	Iraqi Airway	131	2
Baghadad	Iraqi Airway	1311	2	Al Najaf	Iraqi Airway	139	1
Baghadad	Iraqi Airway	1313	1	Baghadad	Iraqi Airway	301	1
Abidjan	MEA	576	1	Baghadad	MEA	323	2
Dubai	MEA	429	1	Cairo	MEA	307	2
13/05/2021				Istanbul	Turkish	826	1
Adis Abab	Ethiopian	406	1	Istanbul	Pegasus	862	1
Al Najaf	MEA	327	1	Baghadad	Iraqi Airway	1311	1
Baghadad	MEA	323	1	Baghadad	Iraqi Airway	1313	2
14/05/2021				Baghadad	Iraqi Airway	305	2
Dubai	Emirates	957	1	16/05/2021			
Riyad	MEA	1425	1	Adis Abab	Ethiopian	406	1
Dubai	MEA	427	1				
Al Basra	MEA	333	3				
Total			15	Total			16

Lebanese Red Cross

Cases transferred to the hospital	28,872 (43 New)	Ambulance centers	48	Number of additional ambulance centers ready to respond	94,457	Number of PCR tests transferred to laboratories	241,227
Number of being benefitting from awareness sessions	147,421 (26 New)	total number of respondents	8,915	Number of trained paramedics	1,498	Number of volunteers trained to transfer PCR tests	166
Number of trained managers for isolation centers	8,920	total LRC volunteers for covid 19	550	Number of university volunteers trained to conduct awareness sessions	321	The number of university volunteers trained to follow up on prevention measures in companies and institutions	1025
Number of prisons that has been disinfected	1,274	Total distributed posters, brochures, and flyers on covid19 prevention	1,274,023	Number of distributed equipment	318,848	Number of beneficiaries from educational electronic platforms COVID-19	6,255 (2 New)

Ref : Ministry of Public Health

All reports and related decisions can be found at: <http://drm.pcm.gov.lb>

Or social media @DRM_Lebanon

Lebanese Army Forces

- The army units continue to distribute social aid (400,000 Lebanese pounds) to families with limited income in all Lebanese territories.
- Distributing food aid in various Lebanese regions through the CIMIC Office.
- Supporting the security services in implementing the decisions issued by the Council of Ministers

General Directorate of State Security

- Reporting the number of new positive cases in the various governorates and the cases in home quarantine.
- Follow up the procedures approved at the air, land and sea borders, in cooperation with the teams of the Ministry of Public Health

General Directorate of Internal Security Forces

50,681 written minutes have been written against violators of the decisions of general mobilization since 01/14/2021

The General Directorate of the Internal Security Forces, the Public Relations Division, issued a report on the number of injuries in prisons to date, as the number of laboratory, clinical and temporal recovery cases of the Corona virus in Roumieh Central Prison and in the Beirut Justice Palace and in the prisons of minors and women in Baabda reached 1074 cases from The total number of positive cases was 1082, after conducting 4,262 laboratory tests, "PCR", of the inmates. 32 positive cases were also recorded in Jeb Jenin Prison, 26 positive cases in Baalbek Prison, 2 positive cases in Zahle Prison, one positive case in Tibnine Prison, 4 positive cases in the glasses of the Judicial Police Unit, while 4 similar cases recovered. As for the eyeglasses of the Beirut Police Unit, no positive case was recorded.

The reports that were written against the violators of the decisions of the general mobilization during the past 48 hours were distributed according to the regions as follows:

The number of seizure records during the past 24 hours					The total number of records since 03/08/2020	
Written records of violating institutions				0	Beirut	54,069
Written records of persons that violate curfew decision				0		
Written records of persons violating the decision to wear a mask				4		
Total				4	Mount Leb	67,256
					Beqaa	27,502
					North	21,170
					South	21,195
Beirut	Mount Leb	Beqaa	North	South	Total	192,192s
4	0	0	0	0		

General Directorate of General Security

Reporting solidarity gatherings with the Palestinian people in Nabatiyeh, Haret Al-Naameh, Al-Hamra, Al-Tal Square, Daraya, Tripoli, Hasbaya, Marjayoun, Burj Al-Barajneh and Bar Elias.

Carrying out patrols in various governorates, establishing fixed and mobile monitoring points to follow up the implementation of the general closure decision, issuing violations against violators in cooperation with municipalities, and alerting citizens to adhere to preventive measures.

Reporting that about 500 people gathered in solidarity with the families of the arrested with the Syrian Lebanese authorities, Dr. Ahmed Hamdan Diab, calling on the President of the Republic to intervene.

Reporting the percentage of compliance with the general mobilization decision in the governorates, which came as follows within the past 24 hours:

Beirut	South	North	Akkar	Beqaa	Nabatiyeh	Baalbek Hermel	Mount Leb
25%	25%	20%	15%	15%	25%	15%	20%

Ministry of Public Works and Transportation

Beirut Rafic Hariri International Airport:

Departing Flights		Arriving Flights	
Number of Flights	102	Number of Flights	100
Number of Departing Individuals	10,515	Number of Arrivals	10,796

Ref : Ministry of Public Health

All reports and related decisions can be found at: <http://drm.pcm.gov.lb>

Or social media @DRM_Lebanon

Ports:

Port	Entered			Left		
	Export	Direction	#	Import	Direction	#
Beirut	Containers	Port Said	3	Containers	Alexandrun	1
	Containers	Dmeit	1	Containers	Mersen	1
	Metals	Mosarta	1	Containers	Mersen	1
Tripoli	Crew change	Alexandria	1	Blank	Saida	1
	Maintenaince	Spain	1	Containers	Lazqyeh	1
	Containers	Port Said	1	Goods	Mersen	1
Jbeil	Diesel	Beirut	1			
Chekka				Blank	Turkey	1
Total			9			7

General Decisions / Announcements

Middle East Airlines issued a statement, in compliance with the decision issued by the Civil Aviation Authority in the United Arab Emirates, whereby all passengers traveling from Lebanon to Dubai are required to have a negative PCR test result valid for 72 hours from the time the sample was taken in addition to the mandatory The presence of a QR Code on the test result as of May 10, 2021. As for travelers to Abu Dhabi, the above-mentioned procedures will be applied starting May 14, 2021.

The following recommendations were issued by the Committee on Follow-up of Preventive Measures and Measures to Confront the Coronavirus on May 06, 2021:

1. Evaluating the reality of receiving the vaccine in the Republic of Côte d'Ivoire in preparation for adding it to the list of countries from which arrivals are exempt 15 days after receiving the second dose of the vaccine from conducting the PCR examination in those countries and the General Directorate of Civil Aviation will deposit the result of this evaluation for the necessary action by it.
2. Developing the epidemiological surveillance program in the ministry and setting up a plan for a mechanism for conducting future examinations for Corona - Testing Strategy - in cooperation with the World Health Organization and university hospitals.
3. Assigning governmental and private hospitals to provide the ministry with the number of daily PCR examinations conducted by it and the percentage of positive ones, and depositing them to the committee through the ministry for the purpose of continuous evaluation of the epidemiological reality.

Note: The full text of the decision can be found on the website <http://drm.pcm.gov.lb>

Examples of lack of adherence to safety measures

- Overcrowding in foodstuff stores, failure to organize roles on payment boxes, failure to respect the safe distance between customers, and the obligation to wear masks.
- Overcrowding inside banks and gatherings in front of cash withdrawal machines and money transfer offices.

Laboratories that did not comply with the procedures approved by the MoPH About the information required to be recorded for infected cases within the past 24 hours

Laboratories that did not specify the Governorate	
Laboratory/Hospitals	Cases
BDH505-Rafic Hariri University hospital	3
BDL003-Laboratoire Inovie / Fayyadie	1
BRL017 - CEMA Lab	1
SDL002-Family Medical Laboratories	1

Number of positive cases without specifying the place of residence	
Laboratory/Hospitals	Cases
BDH505-Rafic Hariri University hospital	3
BDL003-Laboratoire Inovie / Fayyadie	2
BRL007 - Doctors Center	3
BRL017 - CEMA Lab	1
JBL001-Laboratoire Akiki et Boulos	1
NBH301-Hospital Nabatieh Nabih Berry Gouvernemental	2
NBL002- Salam Laboratories	1
SDH418-Hospital Hammoud / Saida	2
SDL002-Family Medical Laboratories	1

Number of positive cases without a phone number	
Laboratory/Hospitals	Cases
BDH558-Hospital Saint Georges Hadath	1

A list of the laboratories accredited by the MoPH to conduct PCR tests

Governmental Labs

الموقع	المختبر
بيروت	مستشفى رفيق الحريري الجامعي
حلبا	مستشفى حلبا الحكومي
طرابلس	مستشفى طرابلس الحكومي
البترون	مستشفى البترون الحكومي
كسروان	مستشفى فتوح كسروان الحكومي (الوار)
سبلين	مستشفى سبلين الحكومي
صيدا	مستشفى صيدا الحكومي
النيطية	مستشفى نبيه بري الحكومي الجامعي
تبينين	مستشفى تبينين الحكومي
بنت جبيل	مستشفى بنت جبيل الحكومي
بعلبك	مستشفى بعلبك الحكومي
الهرمل	مستشفى الهرمل الحكومي
زحلة	مستشفى الرئيس الياس الهراوي الحكومي
بعبدا	مستشفى بعبدا الحكومي

Private Labs

الموقع	المختبر
بيروت	مستشفى الجامعة الأميركية
بيروت	مستشفى أوتيل ديو الجامعي
بيروت	مختبرات رودولف ميريو (الجامعة اليسوعية – المتحف)
بيروت	مستشفى القديس جاورجيوس الجامعي
بيروت	مستشفى المقاصد
بيروت	مستشفى رزق الجامعي
بيروت	مستشفى اللبناني الجعيتاوي الجامعي
بيروت	مستشفى الوردية
بيروت	مركز كليمنصو الطبي
بيروت	مختبر مركز الأطباء
بيروت	مختبر فونتانا (الحمرا)
بيروت	مختبر الأمن العام (العدلية)
بيروت	مختبر سيما
الأشرفية	مختبرات جبر و غرة
الأشرفية	مختبر السان مارك
بيروت	مختبر PHD
بيروت	مختبر مركز مار يوسف الطبي
بيروت	مختبر دار الحوراء
فرن الشباك	مختبر باي لاب
الغبيري	المختبرات الحديثة
الغبيري	مستشفى الساحل
الغبيري	مستشفى الزهراء الجامعي
برج البراجنة	مستشفى الرسول الأعظم
حارة حريك	مستشفى بهمن
حارة حريك	مختبر ناشيونال دياغنونيك سيرفس كومباني
المرجة	مختبر الدكتور محمود عثمان - مركز التحاليل الطبية
الجناح	مختبر أميريك دياغنونيك سنتر
بعبدا	مستشفى جبل لبنان
بعبدا	مستشفى السان جورج الحدث
بعبدا	مختبر الهادي
بعبدا	مختبر INOVIE Liban
الحدث	مختبر علم الأحياء الجزيئية في الجامعة اللبنانية
الضبية	مختبر سان ميشال للتحاليل الطبية
الحازمية	مستشفى قلب يسوع
الحازمية	مختبر كلينيغان
المتن	مستشفى سرحال
المتن	مختبر ترانس ميدكال فور اليف
المتن	مستشفى مار يوسف (مركز ريموند وعائدة نجار)

Ref : Ministry of Public Health

All reports and related decisions can be found at: <http://drm.pcm.gov.lb>

Or social media @DRM_Lebanon

Haroun Hospital	مستشفى هارون	الزلفا
	مختبر مركز الشرق الأوسط الصحي ش.م.ل	بصاليه
Bellevue Medical Center (BMC)	مستشفى بلفو	المنصورية
Haykal Albert Hôpital	مستشفى هيكال	الكورة
University of Balamand	مختبر جامعة البلمند	الكورة
Centre Hospitalier du Nord (CHN)	مركز الشمال الاستشفائي	زغرتا
Saydet Zghorta University MC	سيده زغرتا – المركز الجمعي الطبي	زغرتا
Family Medical Center – Zghorta	المركز العائلي الطبي	زغرتا
Mazloum Hospital	مستشفى المظلوم	طرابلس
Al Mounla Hospital	مستشفى المنلا	طرابلس
Nini Hospital	مستشفى النيني	طرابلس
LMSE	مختبر ميكروبيولوجيا الصحة والبيئة، المعهد العالي للدكتوراه، الجامعة اللبنانية	طرابلس
Islamic Hospital	المستشفى الإسلامي الخيري	طرابلس
Dar Chifaa Hospital	مختبر مستشفى دار الشفاء	طرابلس
Secours des Dame-Notre – CHU	مستشفى سيده المعونات الجامعي	جبيل
Boulos & Akiki Lab	مختبر عقيقي وبولس	جبيل
Wakim Centre Médical	مختبر واكيم	جونية
Elite Medical Center	مختبر إيليت الطبي	جعبتا
Hospital Wzein Ain	مستشفى عين وزين	الشوف
Eva Lab	مختبر إيفا لاب	عرمون
UMC Hospital Hammoud	مستشفى حمود الجامعي	صيدا
Al Karim Medical Laboratory (KML)	مختبر الكريم	صيدا
Al Labib Medical Center	مركز لبيب الطبي	صيدا
	مختبر الـ Lebanese Diagnostic Center	صور
Family Medical Laboratories	مختبر العائلة	الغازية
Hospital Harb Ragheb Sheikh	مستشفى الشيخ راغب حرب	النبطية
SDC (Center Diagnostic Sabbah)	مختبر الصباح	النبطية
Al Salam Laboratories	مختبر السلام	النبطية
Hopital Du Secours Populaire	مختبر مستشفى النجدة الشعبية	النبطية
Jabal Amel Hospital	مستشفى جبل عامل	صور
Mashrek Diagnostic Center (MDC)	مختبر المشرق للتشخيص الطبي	صور
Dar Al Hikmah Hospital	مستشفى دار الحكمة	بعلبك
Hospital University Dar Al Amal	مستشفى دار الأمل الجامعي	بعلبك
Medical Care Laboratories - Baalbek	مختبرات العناية الطبية	بعلبك
Medical Care Laboratories - Labweh	مختبرات العناية الطبية	اللبوة
Tal Chiha Hospital	مستشفى تل شيجا	زحلة
Hospital General Khoury	مستشفى خوري	زحلة
MCC (Center Care Medical)	مختبر ميديكال كير سنتر	زحلة
Hopital Libano-Francais	المستشفى اللبناني الفرنسي	زحلة
Hopital Reyak	مستشفى رياق	رياق

مختبرات المستشفيات العسكرية

Hôpital Central Militaire	المستشفى العسكري المركزي في بيروت	بيروت
---------------------------	-----------------------------------	-------

المختبرات المؤهلة لأخذ عينات "المسحات الأنفية" بطريقة Drive-Thru

Medical Diagnostic Treatment Center (MDTC)	مختبر ميديكال دياغنوستك تريتمنت سنتر (الحمراء)	بيروت
ALS CIC SAL Med-Lab	مختبر ميد لاب الحمراء – الجقيفور	بيروت
Itani Medical Laboratories	مختبرات عيتاني	بيروت
Sakiet Al Janzir Laboratories	مختبر ساقية الجنزير	بيروت
ABC Laboratories	مختبر أ ب سي	الأشرفية
Mouawad Medical Laboratory	مختبرات معوّض الطبية	الشياح
Rihan Medical Center	مختبرات الشياح (د. فؤاد ربحان)	الشياح
United Healthcare Center	مختبرات المتحدة للرعاية الصحية	الشياح
Al Naqaa Medical Center	مختبر النقاء الطبي	الأوزاعي
Laboratoire le Boulevard	مختبرات البولفار	بدارو
CHU Al Youssef	مركز اليوسف الاستشفائي التعليمي	حلبا
Hopital El Koura	مستشفى الكورة	الكورة
Kesserwan Medical Center	مركز كسروان الطبي	كسروان
Lab Expert	مختبر إكسبرت لاب	المنصورية
Saint Elie Laborator	مختبر سانت إيلي	انطلياس
BMP Laboratory	مختبر ب م ب	ذوق مصبح
Laboratoire Dr. Elie Taleb	مختبر الدكتور إيلي طالب	جونية
MEMER Leb	مختبرات الشرق الأوسط للتحاليل الطبية	جونية
Family Clinic	مختبر فاميلي كلينيك	صيدا

Ref : Ministry of Public Health

All reports and related decisions can be found at: <http://drm.pcm.gov.lb>

Or social media @DRM_Lebanon

First Lab	مختبر فيرست لاب	العاقبية
Riyad Medical Laboratories	مختبرات الرياض الطبية	جب جنين
ADC	مختبر مركز التشخيص الطبي	جب جنين
LAB Life	مختبر لايف لاب	بعلبك
Beqaa Medical Lab	مختبر مركز البقاع الطبي	زحلة
Laboratoires Saint George	مختبرات السان جورج	زحلة
Araibi Medical Laboratories	مختبرات العربي الطبية	رياق
Beqaa Hospital Laboratories	مختبر مستشفى البقاع	البقاع

Ref : Ministry of Public Health

All reports and related decisions can be found at: <http://drm.pcm.gov.lb>

Or social media @DRM_Lebanon