

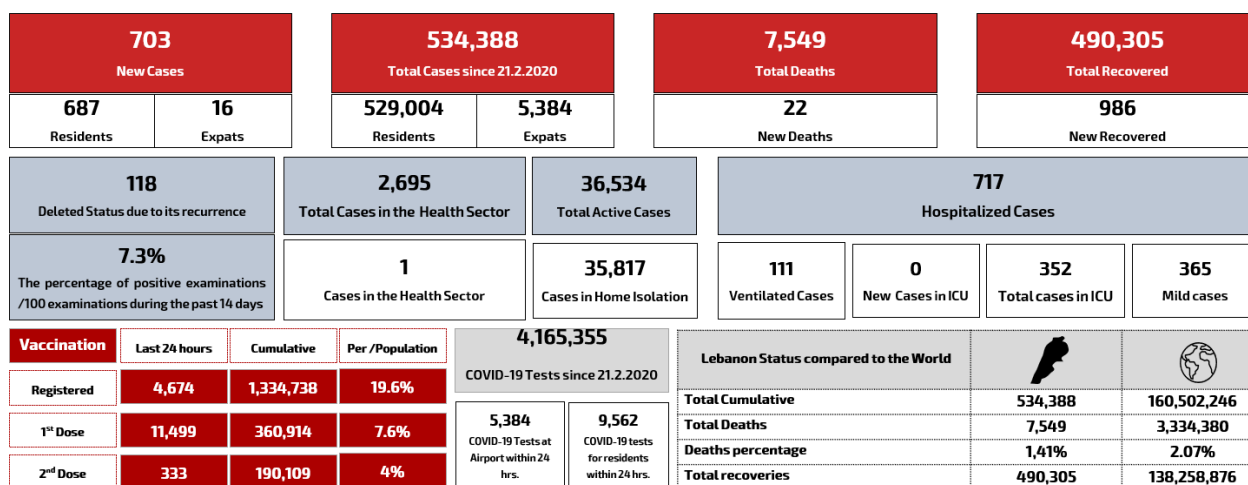
Lebanon National Operations Room

Daily Report on COVID-19

Wednesday. 12 May.2021

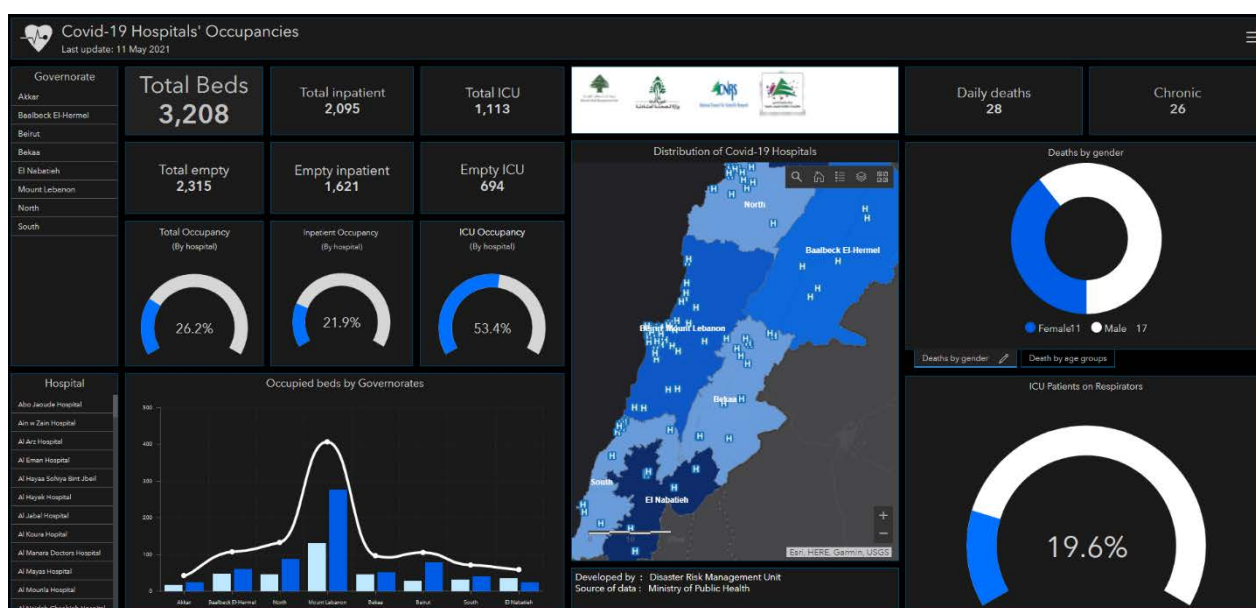
Report #411

Time Published: 9:30 PM



Ref: Ministry of Public Health Data

Occupancy rate of COVID-19 Beds and Availability



For daily information on all the details of the bed's distribution availability for Covid-19 patients among all governorates and according to hospitals, kindly check the dashboard link:

Computer: <https://bit.ly/DRM-HospitalsOccupancy-PCPhone>: <https://bit.ly/DRM-HospitalsOccupancy-Mobile>

Distribution by Villages

Beirut	78	Baabda	102	Maten	115	Chouf	28	Tripoli	12	Baalbek	19
Ain Mraisseh	3	Chiyah	9	Borj Hammoud	14	Naameh	5	Trablous Et Tall	1	Baalbek	5
Ras Beyrouth	2	Jnah	3	Sinn Fil	6	Haret En Naameh	1	El Qoubbeh	2	Chraouneh	1
Raoucheh	1	Ouzaai	1	Jisr Bacha	4	Chhim	2	Et Tabbaneh	1	Maqassed	1
Hamra	5	Bir Hassan	5	Jdaidet Matn	7	Mazboud	1	Mina N:1	2	Laboueh	2
Ain Tineh	1	Ghbayreh	10	Ras Jdaideh	1	Dalhoun	1	Others	5	Qaa Baalbek	2
Msaitbeh	6	Ain Roummaneh	2	Baouchriyeh	2	Barja	9	Camp Beddaoui	1	Younine	1
Mar Elias	1	Furn Chebbak	2	Raoda Baouchriyeh	4	Baassir	1	Koura	11	Haouch Er Rafqa	1
Unesco	1	Haret Hreik	18	Sadd Baouchriyeh	3	Jadra	1	Kfar Aaqqa	1	Temnine Et Tahta	1
Tallet Drouz	2	Laylakeh	3	Sabtiyeh	2	Ouardaniyeh	2	Kfar Hata	3	Taraya	2
Mazraa	2	Borj Brajneh	18	Deir Mar Roukoz	1	Joun	1	Enfeh	1	Nabi Chit	2
Borj Abou Haidar	4	Mreijeh	5	Dekouaneh	9	Faouarat Jaafar	1	Dahr El Ain	3	Others	1
Basta Faouqa	1	Baabda	4	Mkalles	1	Niha	1	Barsa	1	Saida	60
Tariq Jdideh	8	Hazmiyeh	2	Antelias	2	Ain Ouzain	1	Nakhleh	1	Saida El Ouastani	1
Ras Nabaa	5	Yarzeh	1	Jall Dib	1	Aammatour	1	Others	1	Saida El Qadimeh	14
Basta Tahta	3	Hadath	13	Naqqach	1	Others	1	Zgharta	5	Saida Es Saraya	1
Gemmaizeh	1	Jamhour Louaizeh	2	Zalqa	2	Aleyh	52	Kfar Hata	1	Haret Saida	2
Mar Mikhayel Nahr	1	Kfar Chima	1	Dbayeh	8	amroussiyeh	3	Beit Aaoukar	2	Miyeh Ou Miyeh	1
Rmeil	3	Rouayssat Ballout	1	Deir Aaoukar	2	Hay Es Sellom	8	Miriata	2	Ain El Heloueh	9
Achrafiyeh	10	Aabadiyeh	1	Mansouriyeh	8	Khaldeh	7	Batroun	10	Aabra	3
Others	18	Others	1	Daychouniyeh	1	Choueifat El Oumara	2	Batroun	6	Qraiye	2
Bnt Jbeil	15	Tyre	24	Fanar	6	Deir Qoubel	2	Chikka	1	Ain Ed Delb	1
Aaytaroun	2	Sour	6	Ain Saadeh	1	Aaramoun	6	Douq	1	Ghaziye	3
Jmaimh	1	Bahr Ech Chemali	2	Bsalim	1	Mounseh	1	Chibtime	1	Maghdoucheh	1
Aayta Ej Jabal	1	Borj Ech Chemali	4	Mtayleb	1	Bchamoun	6	Sourat	1	Kharayeb	1
Chaqra	1	Jouaiya	1	Rabiyeh	2	Blaybel	1	Akkar	8	Kaouthariyet Er Riz	1
Hariss	1	Aaytit	1	Mazraat Yachouaa	2	Houmal	2	Aakkar El Aatiqa	1	Zrariyeh	2
Kfar Dounine	2	Barich	1	Bikfaya	1	Aaley	7	Khreibet Ej Jindi	1	Babliye	1
Qalaouiyeh	1	Maarakeh	4	Beit Chabab	5	Qmatiyeh	1	Qleiaat	1	Sarafand	3
Others	6	Maaroub	1	Ain Kharroubeh	1	Aaytat	2	Nahr El Bared	3	Bissariyeh	2
Marjaayoun	3	Hmairi Sour	1	Himlaya	1	Bayssour	1	Rihaniyeh	1	Es Siyad	1
Borj El Mlouk	1	Bazouriyeh	1	Broummana	5	Saoufar	2	Aaidamoun	1	Merouaniyeh	1
Khiyam	1	Deir Kifa	1	Baabdat	1	Charoun	1	Minch Dunieh	4	Aaddoussiyeh	1
Meiss Ej Jabal	1	Others	1	Beit Meri	1	Kesrwen	59	Deir Aammam	1	Aaqtanit	1
		Nabatieh	32	Monteverdi	1	Jounieh Sarba	1	Sir Ed Danniyeh	1	Others	8
		El Mansoura	2	Dahr Es Souane	1	Jounieh Kaslik	3	Qarsaita	1		
		Zibdine	3	Bteghrine	5	Zouk Mkayel	4	Kfar Habou	1		
		Kfar Roummane	2	Douar	1	Nahr El Kalb	1	Zahleh	21		
		Choukine	1	Jbeil	19	Jounieh Ghadir	2	Zahleh El Midane	1		
		Kfar Tibnit	1	Jbayl	5	Zouk Mosbeh	4	Zahleh El Maallaqa	1		
		Jbaa	1	Mastita	1	Adonis	1	Zahleh Karak Nouh	2		
		Ain Qana	1	Blat	1	Jounieh Haret Sakhr	2	Zahleh Aradi	2		
		Deir Ez Zahrani	3	Aamchit	4	Jounieh Sahel Aalma	6	Zahleh Mar Elias	2		
		Nmairiyeh	2	Halate	3	Tabarja	2	Fourzol	1		
		Douair	1	Hosrayel	1	Adma Oua Dafneh	1	Hazerta	1		
		Jibchit	4	Nahr Ibrahim	1	Bouar	1	Ablah	1		
		Mayfadoun	1	Berbara	1	Aaqaybeh	1	Niha	2		
		Insar	1	Ehmej	1	Aajaltoun	3	Jalala	1		
		Qsaibeh	1	Hboub	1	Ballouneh	7	Saadnayel	2		
		Qaaqaiyet Ej Jisr	1			Shayleh	7	Qabb Elias	1		
		Kfar Sir	2			Ain Er Rihaneh	1	Bouarej	1		
		Sir El Gharbiyeh	2			Aintoura	1	Majdel Aanjar	1		
		Others	3			Ghazir	1	Aali En Nahri	1		
						Kfar Hbab	1	Others	1		
						Borj El Ftouh	2	Beqaa Gharby	2		
						Chnanaair	1	Joubb Jannine	1		
						Ghidras	1	Ghazze	1		
						Chahtoul	1				
						Rayfoun	1				
						Aachqout	1				
						Kfar Dibiane	1				
						Hrajel	1				

Others

23

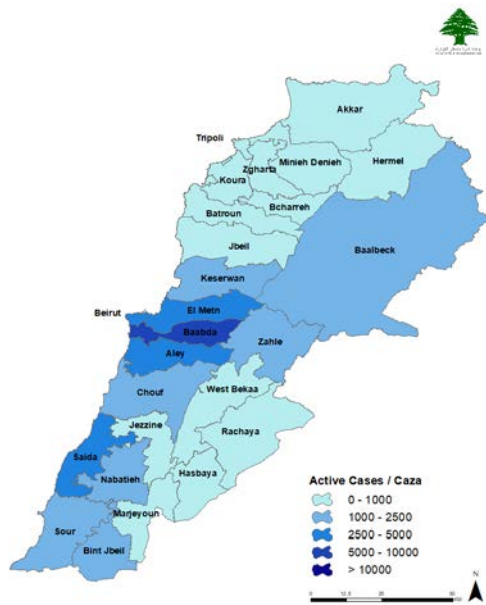
Ref : Ministry of Public Health

All reports and related decisions can be found at: <http://drm.pcm.gov.lb>

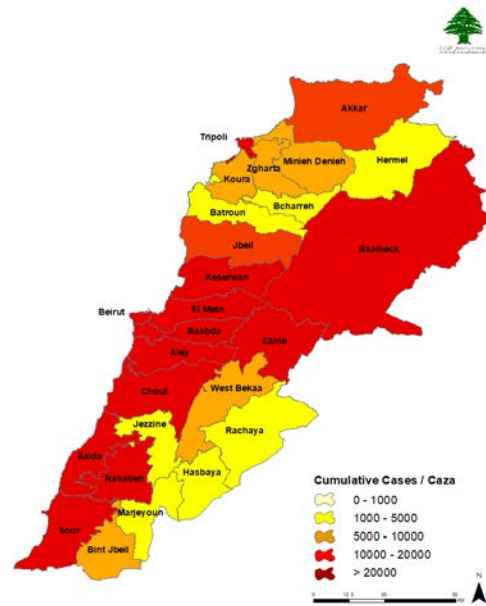
Or social media @DRM_Lebanon

Distribution of Active and Cumulative Cases

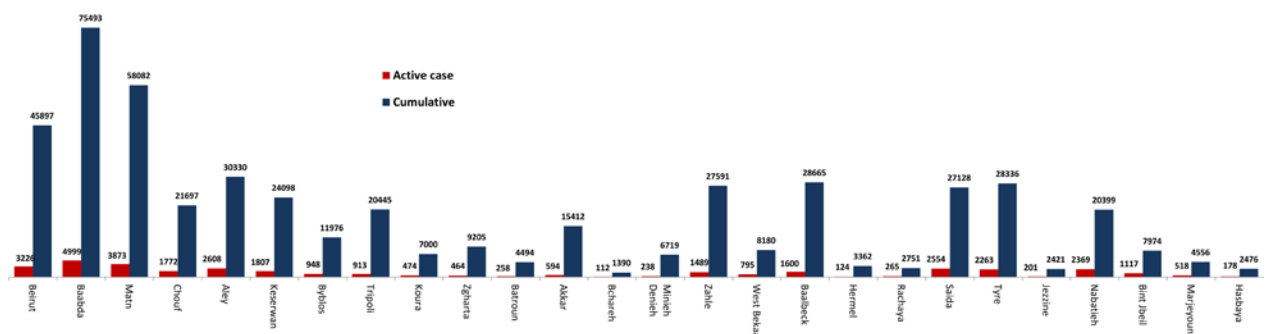
Distribution of Active Cases



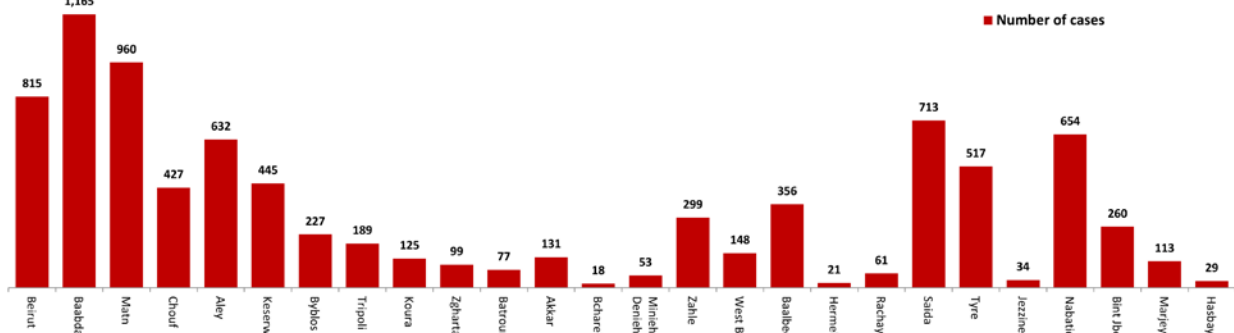
Distribution of Cumulative Cases



Number of Cases by Location



Number of cumulative cases for the last 14 days



Ref : Ministry of Public Health

All reports and related decisions can be found at: <http://drm.pcm.gov.lb>

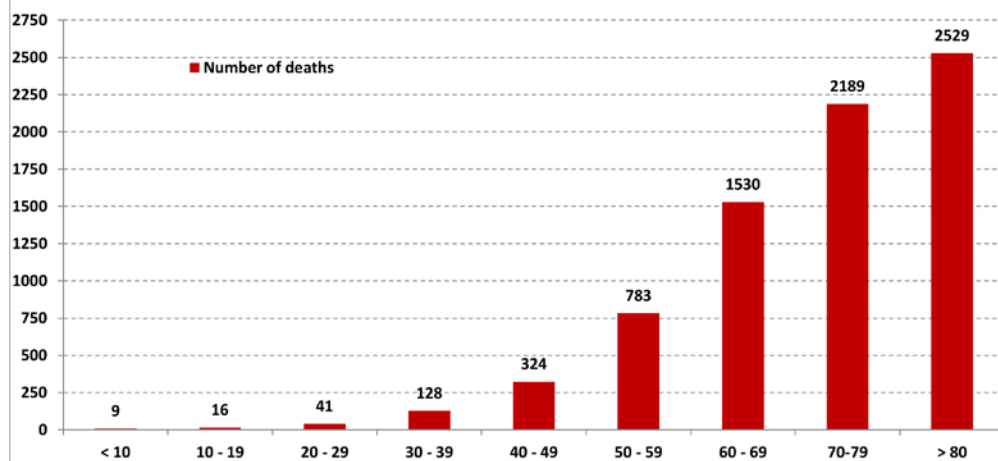
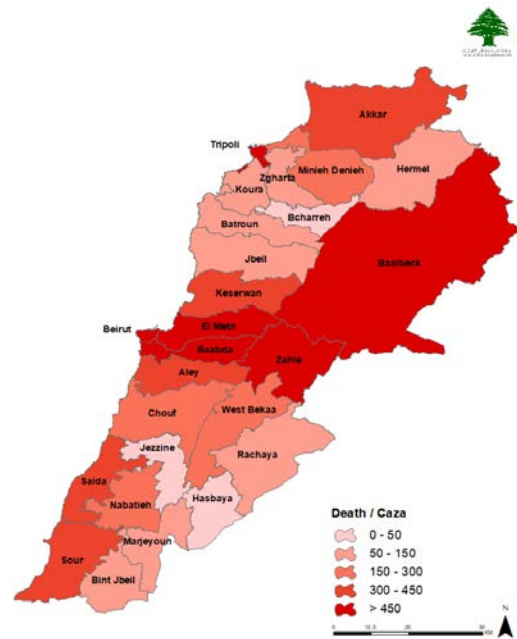
Or social media @DRM_Lebanon

Distribution of Death Cases

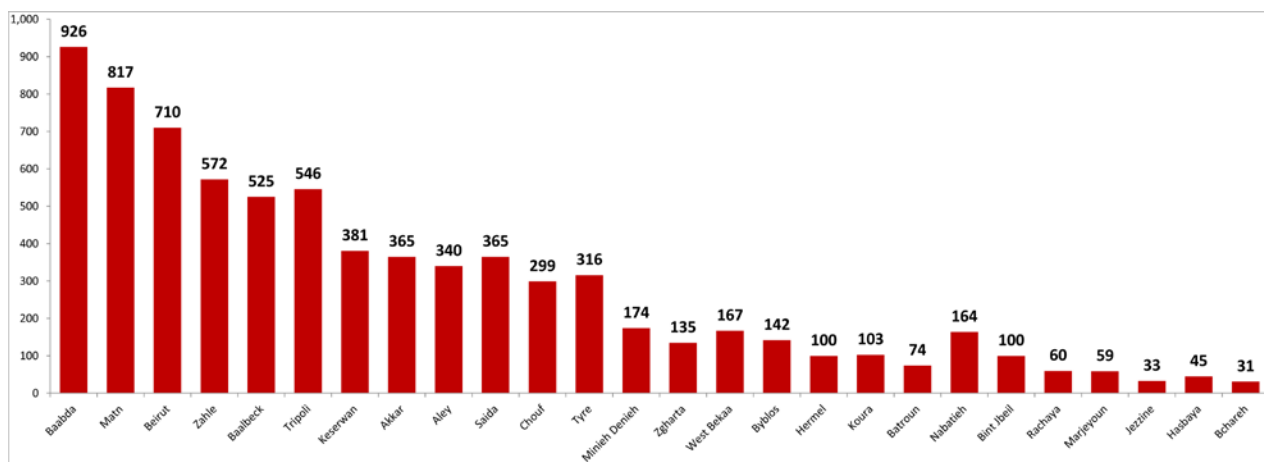
Distribution of deaths during the past 72 hours

Hospital	Residence	Gender	Age	Chronic
	12/05/2021			
Al Youssef Hosp	Akkar	Male	37	Yes
Saint George Roum	Maten	Male	47	Yes
Baalbek Gov Hosp	Baalbek	Female	53	Yes
Riyyak Hosp	Hermel	Male	62	Yes
Tebnen Hosp	Tyre	Male	65	Yes
Ain w Zain Hosp	Chouf	Male	67	No
Hotel Due Hosp	Baabda	Female	70	Yes
Ossairan Hosp	Marjaayoun	Female	70	Yes
Ain w Zain Hosp	Chouf	Female	74	Yes
Hamoud Hosp	Tyre	Female	74	Yes
Dar Hekmeh Hosp	Baalbek	Male	75	No
Baalbek Gov Hosp	Baalbek	Female	75	Yes
Dar Hekmeh Hosp	Baalbek	Male	75	Yes
Saint George Roum	Maten	Male	75	Yes
Dar Chifaa Hosp	Tripoli	Female	76	Yes
Bnt Jbeil Hosp	Bnt Jbeil Hosp	Male	79	Yes
Ragheeb Hareb Hosp	Marjaayoun	Male	81	Yes
Riyyak Hosp	Zahleh	Female	83	Yes
Libano Francis Hosp	Rachaiya	Female	84	No
Saint Therees Hosp	Baabda	Female	87	Yes
Home	Rachaiya	Male	89	Yes
Tal Chiha Hosp	Zahleh	Female	90	Yes

SS



Distribution of deaths by Governorate

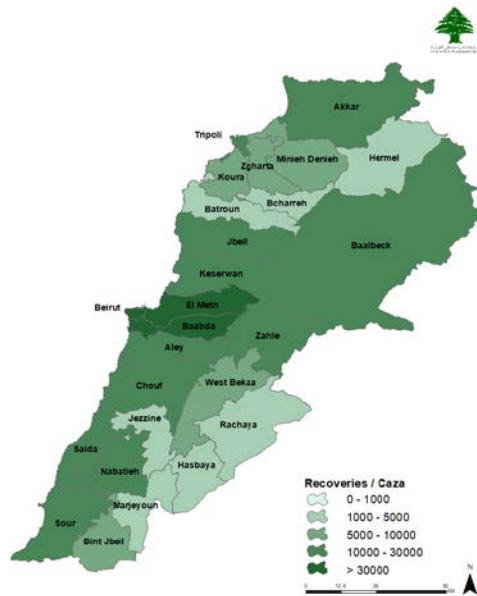


Ref : Ministry of Public Health

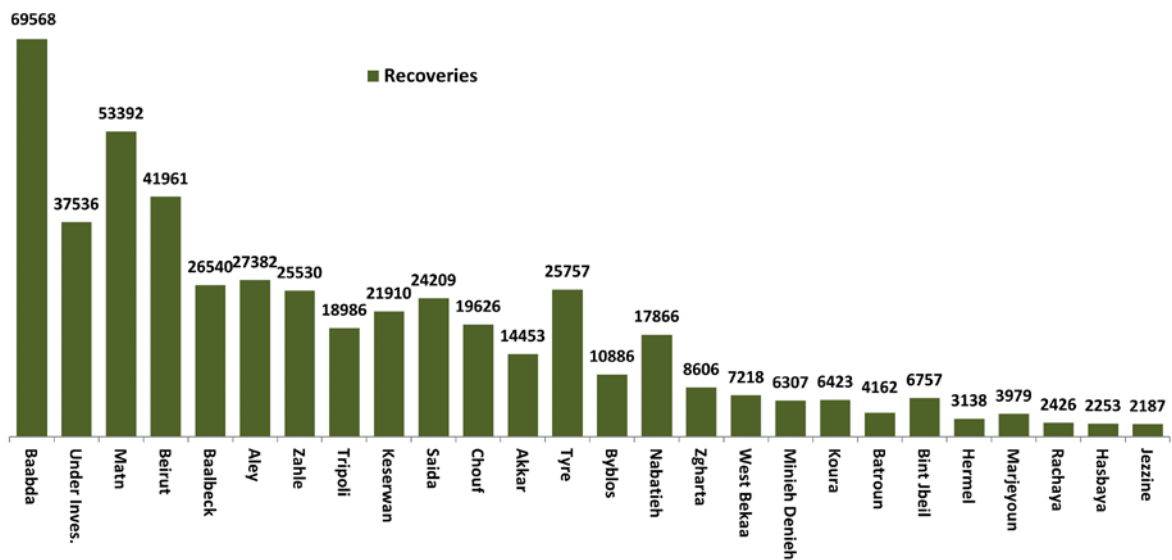
All reports and related decisions can be found at: <http://drm.pcm.gov.lb>

Or social media @DRM_Lebanon

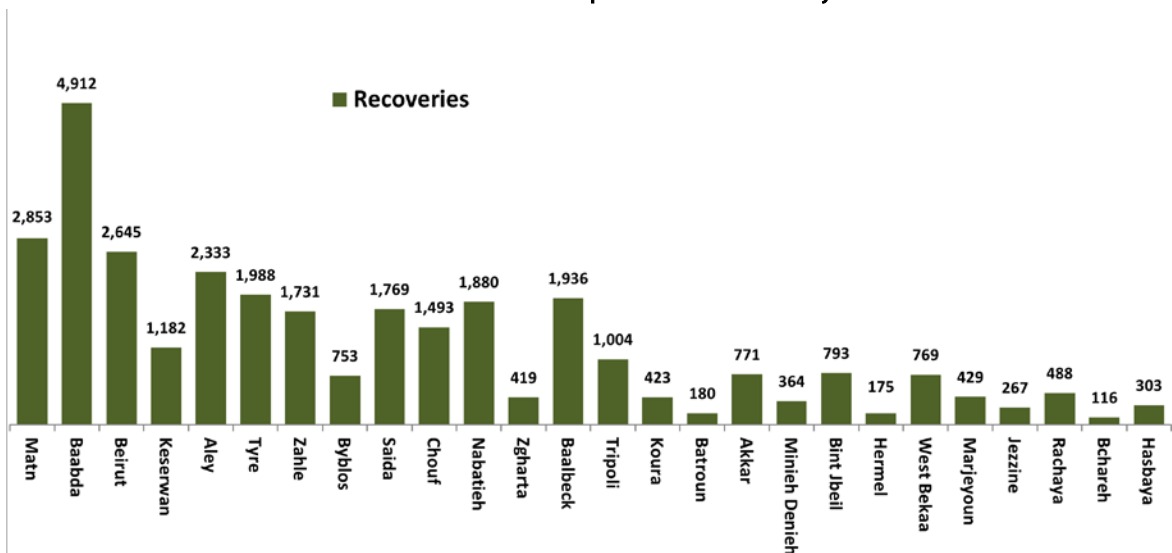
Distribution of Recoveries



Distribution of Recoveries per Casa



Distribution of Recoveries per Casa in the last 14 days



Ref : Ministry of Public Health

All reports and related decisions can be found at: <http://drm.pcm.gov.lb>

Or social media @DRM_Lebanon

Follow-up of citizens' mobility requests during the complete closure period according to the permission request mechanism via the IMPACT platform at the Ministry of Interior and Municipalities

sms received 0 Count	طلب إذن خاص للتنقل 77
sms good format 75 sms - Count	...خاص المستثنون من قرار الإقفال العام 0 Count
sms state 75 قيد المراجعة - Count	للأشخاص غير المشمولين 77 عدد
sms received (unique) 0 Unique count of sms_received_phone.keyword	حالة طلب التنقل للأشخاص غير المشمولين 77 قيد المراجعة - Count
	unique - طلب إذن خاص للتنقل 65 Unique count of curfew_mobility_request_mobile_number.keyword



Decision No. 26 / M / P of 11/1/2021 - Request for permission to move persons not covered by the general closure exceptions: Via the website COVID.PCM.GOV.LB or by sending an SMS to 1120

The online platform for registering the taking of the Coronavirus vaccine

استمارة التسجيل لأخذ اللقاح المضاد لفيروس كورونا (كوفيد-19)
Covid-19 Vaccine pre-registration form

الجمهورية اللبنانية
وزارة الصحة العامة

<https://covax.moph.gov.lb>

IMPACT

الرجاء تحديد الفئة التي تنتمي إليها من بين الفئات المدرجة في القائمة أدناه
Please select to which category you belong among the ones listed below

فئات أخرى
Other

←

عامل في القطاع الصحي
Healthcare worker

←

Ref : Ministry of Public Health

All reports and related decisions can be found at: <http://drm.pcm.gov.lb>

Or social media @DRM_Lebanon

The National Awareness Campaign on the Coronavirus Vaccine (Questions and Answers)

There is currently no mechanism for getting the vaccine through a private doctor. The mechanism used is getting the vaccine at vaccination centers approved by the Ministry of Public Health. **This mechanism guarantees obtaining a vaccination certificate.**



REPUBLIC OF LEBANON
MINISTRY OF PUBLIC HEALTH



REPUBLIC OF LEBANON
MINISTRY OF INFORMATION



World Health Organization
Lebanon



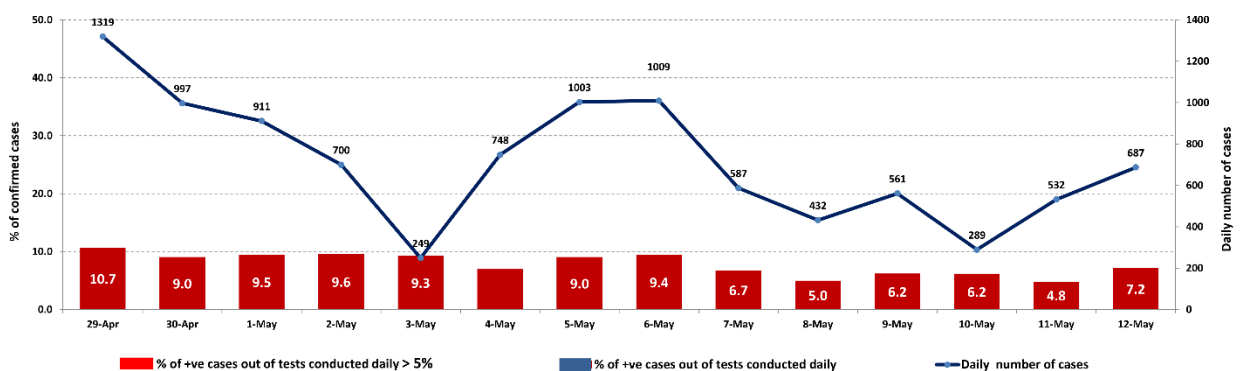
unicef
for every child



REPUBLIC OF LEBANON
MINISTRY OF HEALTH



The percentage of positive cases out of the number of daily checks during the past 14 days

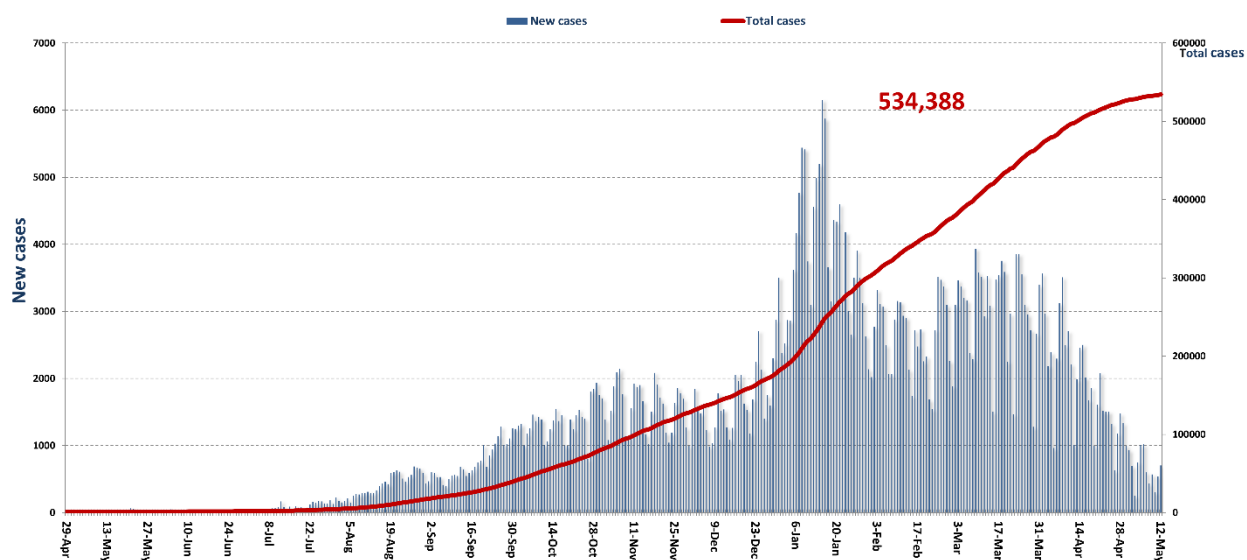


Ref : Ministry of Public Health

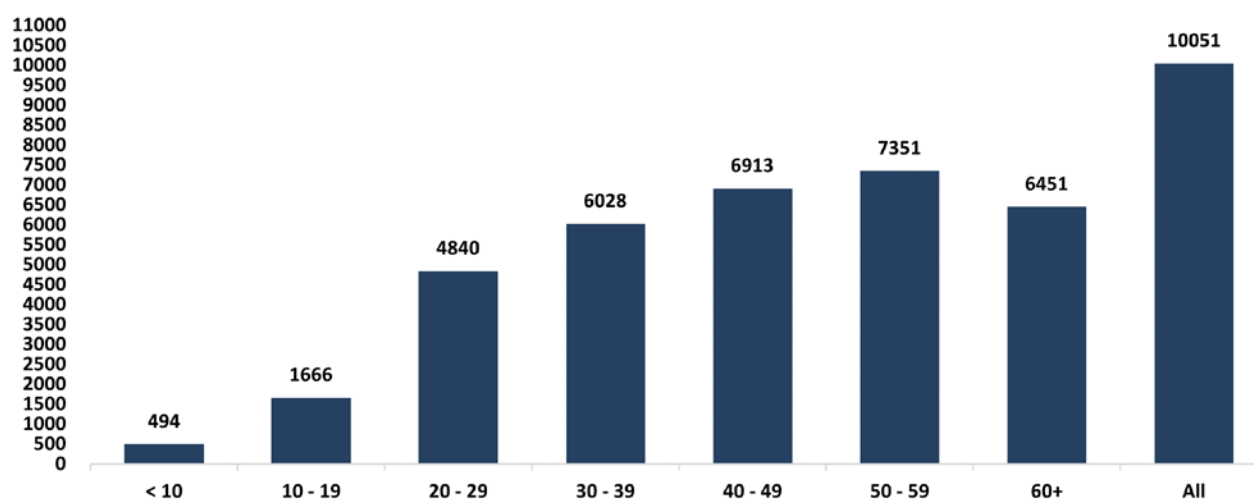
All reports and related decisions can be found at: <http://drm.pcm.gov.lb>

Or social media @DRM_Lebanon

Cumulative cases per day



Age-Specific Cumulative Incidence rate (/100000)

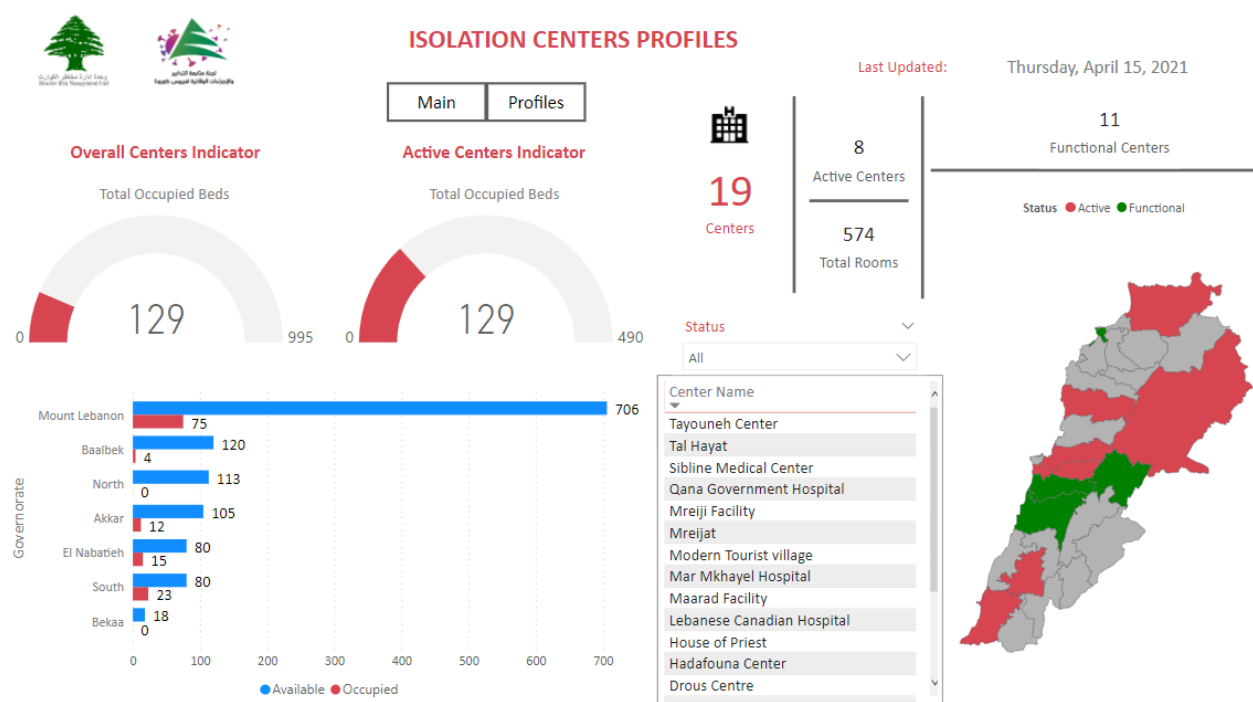


Ref : Ministry of Public Health

All reports and related decisions can be found at: <http://drm.pcm.gov.lb>

Or social media @DRM_Lebanon

Occupancy rate of isolation centers for cases infected with Corona virus



For more information about the isolation centers' distribution and the percentage of their occupancy, enter the following link: <http://bit.ly/DRM-IsolationCentersProfiles>

Note: These centers have been equipped in cooperation with the National Committee for Follow-up of Preventive Measures and Measures to Confront Coronavirus, Governors and Municipalities, the United Nations Development Program, the World Health Organization, UNICEF, the Ministry of Public Health, the Syndicate of Nurses in Lebanon, and the Syndicate of Specialists in Social Work

Decisions and actions taken during the past 48 hours

Ministry of Public Health

The Ministry of Public Health announced the completion of PCR examinations for flights that arrived in Beirut, and were conducted at the airport on dates 8, 9 and 10 May 2021, and the results showed that there were twenty-six (26) positive cases, distributed on the following flights:

08/05/2021			
Direction	Company	Flight	Cases
Baghdad	MEA	323	1
Istanbul	MEA	268	1
Doha	MEA	437	1
Istanbul	Turkish Airline	826	1
Dubai	MEA	429	1
Al Najaf	Iraqi Airways	139	4
Total			9

10/05/2021			
Direction	Company	Flight	Cases
Copenhagen	MEA	226	2
Total			2

09/05/2021			
Direction	Company	Flight	Cases
Adis Abab	Ethiopian	406	1
Dubai	Emirates	957	1
Baghdad	Iraqi Airway	131	2
Istanbul	Turkish Airline	824	2
Jeddah	SV	641	1
Dubai	Emirates	953	2
Al Najaf	MEA	327	2
Istanbul	MEA	268	1
Istanbul	Turkish Airline	826	2
Sharqah	G9	385	1
Total			15

Lebanese Red Cross

Cases transferred to the hospital	28,738 (36 New)	Ambulance centers	48	Number of additional ambulance centers ready to respond	94,413 (171 New)	Number of PCR tests transferred to laboratories	241,227
Number of being benefitting from awareness sessions	147,382	total number of respondents	8,915	Number of trained paramedics	1,498	Number of volunteers trained to transfer PCR tests	166
Number of trained managers for isolation centers	8,920	total LRC volunteers for covid 19	550	Number of university volunteers trained to conduct awareness sessions	321	The number of university volunteers trained to follow up on prevention measures in companies and institutions	1025
Number of prisons that has been disinfected	1,274	Total distributed posters, brochures, and flyers on covid19 prevention	1,274,023	Number of distributed equipment	318,848	Number of beneficiaries from educational electronic platforms COVID-19	6,253

Ref : Ministry of Public Health

All reports and related decisions can be found at: <http://drm.pcm.gov.lb>

Or social media @DRM_Lebanon

Lebanese Army Forces

- The army units continue to distribute social aid (400,000 Lebanese pounds) to families with limited income in all Lebanese territories.
- Distributing food aid in various Lebanese regions through the CIMIC Office.
- Supporting the security services in implementing the decisions issued by the Council of Ministers

General Directorate of State Security

- Reporting the number of new positive cases in the various governorates and the cases in home quarantine.
- Follow up the procedures approved at the air, land and sea borders, in cooperation with the teams of the Ministry of Public Health

General Directorate of Internal Security Forces

49,681 written minutes have been written against violators of the decisions of general mobilization since 01/14/2021

The reports that were written against the violators of the decisions of the general mobilization during the past 72 hours were distributed according to the regions as follows:

The number of seizure records during the past 24 hours					The total number of records since 03/08/2020	
Written records of violating institutions				0	Beirut	54,033
Written records of persons that violate curfew decision				6		
Written records of persons violating the decision to wear a mask				0		
Total				6		
					Mount Leb	67,668
					Begaa	27,202
					North	21,118
					South	21,109
Beirut	Mount Leb	Begaa	North	South	Total	191,130
0	6	0	0	0		

General Directorate of General Security

Carrying out patrols in various governorates, establishing fixed and mobile monitoring points to follow up the implementation of the general closure decision, issuing violations against violators in cooperation with municipalities, and alerting citizens to adhere to preventive measures.

The report on the security forces' support for the transfer of Coronavirus vaccines from Rafic Hariri University Hospital to the following hospitals: Al-Makassed, American University, Jeitaoui, Saint George, Hotel Dieu, Tripoli Governmental and Abdel-Rassi Governmental

Reporting the percentage of compliance with the general mobilization decision in the governorates, which came as follows within the past 24 hours:

Beirut	South	North	Akkar	Begaa	Nabatiyeh	Baalbek Hermel	Mount Leb
25%	30%	15%	10%	10%	25%	10%	15%

Ministry of Public Works and Transportation

Beirut Rafic Hariri International Airport:

Departing Flights		Arriving Flights	
Number of Flights	50	Number of Flights	49
Number of Departing Individuals	3,277	Number of Arrivals	6,014

Ports:

Port	Entered			Left		
	Export	Direction	#	Import	Direction	#
Beirut	Gasoline	Arzew	1	Blank	Tripoli	1
	Battleship	Sea	1	Blank	Spain	1
	Containers	Tripoli	1			
	Containers	Limassoul	1			
Tripoli	Metals	Tartous	1	Blank	Romania	3
	Wheat	Russia	1	Containers	Alexandrun	1
	Blankss	Beirut	1	Metals	Dmeit	1
Total			7			7

Ref : Ministry of Public Health

All reports and related decisions can be found at: <http://drm.pcm.gov.lb>

Or social media @DRM_Lebanon

In implementation of the Cabinet Presidency Book No. 487 / p on 3/26/2021 related to confronting the Coronavirus, and due to the improvement in the epidemiological situation and the remarkable decrease in the number of infections, the closure shall be implemented during the Happy Eid Al Fitr period for a period of two days, starting from the first day of the Eid, as it was issued by the Chamber National operations in the Grand Serail are a detailed list that shows the sectors that are excluded from closure and the continuity of their work, with an emphasis on the following:

1. Emphasizing the necessity of compulsory wearing of the muzzle under the pain of underlining records of arrest against violators and preventing the holding of celebrations and gatherings of all kinds
2. Preventing going out and entering the streets and roads as of five o'clock in the morning on the first day of Eid Al-Fitr for a period of two days. And for persons not included in the exception who are subject to the closure decision after obtaining a permission to move through the link covid.pcm.gov.lb to the following places: vegetable, fruit and fish markets, pharmacy and veterinary clinics, in-furnace sales halls, medical clinics, hospitals and their direct services, pharmacies, Supermarket, mini-market, retail stores (poultry, meat, eggs, vegetables, fruits, foodstuffs), gas stations, laboratories.
3. It is allowed to hold prayers in places of worship while adhering to the preventive measures and procedures for Coronavirus and social distancing within 30% of their absorptive capacity
4. Persons traveling to and from Beirut International Airport are allowed to transfer after showing the necessary documents (travel ticket, boarding pass,).
5. The attached table with the decision specifies the sectors covered by the exception, the timing of their work, and the mechanism for obtaining roaming permits by their workers.
6. Upon the expiration of the aforementioned closing period, all previous circulars issued by the National Operations Room shall be restarted.
7. The work time for restaurants in open areas is extended until 12:30 at night, starting on Saturday 15/5/2021, with an emphasis on taking all preventive measures and measures to prevent the spread of the epidemic, while the timing of restaurants inside closed places remains without modification.

The following recommendations were issued by the Committee on Follow-up of Preventive Measures and Measures to Confront the Coronavirus on May 06, 2021:

1. Evaluating the reality of receiving the vaccine in the Republic of Côte d'Ivoire in preparation for adding it to the list of countries from which arrivals are exempt 15 days after receiving the second dose of the vaccine from conducting the PCR examination in those countries and the General Directorate of Civil Aviation will deposit the result of this evaluation for the necessary action by it.
2. Developing the epidemiological surveillance program in the ministry and setting up a plan for a mechanism for conducting future examinations for Corona - Testing Strategy - in cooperation with the World Health Organization and university hospitals.
3. Assigning governmental and private hospitals to provide the ministry with the number of daily PCR examinations conducted by it and the percentage of positive ones, and depositing them to the committee through the ministry for the purpose of continuous evaluation of the epidemiological reality.

The General Directorate of Civil Aviation at the Ministry of Public Works and Transport issued Circular No. 18/2 on April 29, 2021 regarding procedures related to passengers coming to Lebanon from India and Brazil, requesting all aviation partnerships and ground services companies operating at Rafic Hariri International Airport to stop transporting all Passengers arriving from India and Brazil, and passengers wishing to come from these two countries must stay in another country for a period of no less than 14 days before coming to Lebanon, starting from 03/05/2021.

The Ministry of Interior and Municipalities issued Memorandum No. 23 / A / M / 2021 on April 12, 2021 regarding the conditions and instructions related to authorizing organizations and charities to distribute food during the blessed month of Ramadan based on the first item of the recommendations of the Follow-up Committee on Measures and Preventive Measures for Coronavirus issued on 7/4 / 2021. The memo included the following:

1. Instructions and conditions that apply to charities and organizations that distribute breakfast meals to fasting people.
2. Mechanism for charitable organizations and societies to obtain special permission from the Ministry of Interior and Municipalities to distribute food.
3. The General Directorate of Internal Security strictly monitors the adherence of non-governmental organizations and associations to the conditions and instructions issued in the decision and organizes seizure records against violators

Note: The full text of the decision can be found on the website <http://drm.pcm.gov.lb>

Examples of lack of adherence to safety measures

- Overcrowding in foodstuff stores, failure to organize roles on payment boxes, failure to respect the safe distance between customers, and the obligation to wear masks.
- Overcrowding inside banks and gatherings in front of cash withdrawal machines and money transfer offices.

Laboratories that did not comply with the procedures approved by the MoPH About the information required to be recorded for infected cases within the past 24 hours

Laboratories that did not specify the Governorate

Laboratory/Hospitals	Cases
BRL019 - General Security Laboratories	7
BDH505-Rafic Hariri University hospital	2
BDL002-Hadi Laboratory/ Haret Hreik	1
MTH548-Hospital Serhal / Rabieh	1

Number of positive cases without specifying the place of residence

Laboratory/Hospitals	Cases
BRL019 - General Security Laboratories	7
BRL045-Medical Diagnostic Treatment Center (MDTC)	4
SDH418-Hospital Hammoud / Saida	3
BDH505-Rafic Hariri University hospital	2
NBH301-Hospital Nabatieh Nabih Berry Gouvernemental	2
NBL002- Salam Laboratories	2
BDH558-Hospital Rassoul Aazam	1
BDH558-Hospital Sacre Coeur	1
BDH558-Hospital Saint Georges Hadath	1
BDL002-Hadi Laboratory/ Haret Hreik	1
BDL003-Laboratoire Inovie / Fayyadie	1
MTH548-Hospital Serhal / Rabieh	1

Number of positive cases without a phone number

Laboratory/Hospitals	Cases
BDL002-Hadi Laboratory/ Haret Hreik	2

A list of the laboratories accredited by the MoPH to conduct PCR tests

Governmental Labs

الموقع	المختبر
بيروت	مستشفى رفيق الحريري الجامعي
حلبا	مستشفى حلبا الحكومي
طرابلس	مستشفى طرابلس الحكومي
البترون	مستشفى البترون الحكومي
كسروان	مستشفى فتوح كسروان الحكومي (الوار)
سبلين	مستشفى سبلين الحكومي
صيدا	مستشفى صيدا الحكومي
النيطية	مستشفى نبيه بري الحكومي الجامعي
تبينين	مستشفى تبينين الحكومي
بنت جبيل	مستشفى بنت جبيل الحكومي
بعلبك	مستشفى بعلبك الحكومي
الهرمل	مستشفى الهرمل الحكومي
زحلة	مستشفى الرئيس الياس الهراوي الحكومي
بعبدا	مستشفى بعبدا الحكومي

Private Labs

الموقع	المختبر
بيروت	مستشفى الجامعة الأميركية
بيروت	مستشفى أوتيل ديو الجامعي
بيروت	مختبرات رودولف ميريو (الجامعة اليسوعية – المتحف)
بيروت	مستشفى القديس جاورجيوس الجامعي
بيروت	مستشفى المقاصد
بيروت	مستشفى رزق الجامعي
بيروت	مستشفى اللبناني الجعيتاوي الجامعي
بيروت	مستشفى الوردية
بيروت	مركز كليمنصو الطبي
بيروت	مختبر مركز الأطباء
بيروت	مختبر فونتانا (الحمرا)
بيروت	مختبر الأمن العام (العدلية)
بيروت	مختبر سيما
الأشرفية	مختبرات جبر و غرة
الأشرفية	مختبر السان مارك
بيروت	مختبر PHD
بيروت	مختبر مركز مار يوسف الطبي
بيروت	مختبر دار الحوراء
فرن الشباك	مختبر باي لاب
الغبيري	المختبرات الحديثة
الغبيري	مستشفى الساحل
الغبيري	مستشفى الزهراء الجامعي
برج البراجنة	مستشفى الرسول الأعظم
حارة حريك	مستشفى بهمن
حارة حريك	مختبر ناشيونال دياغنوستك سيرفس كومباني
المرجة	مختبر الدكتور محمود عثمان - مركز التحاليل الطبية
الجناح	مختبر أميريك دياغنوستك سنتر
بعبدا	مستشفى جبل لبنان
بعبدا	مستشفى السان جورج الحدث
بعبدا	مختبر الهادي
بعبدا	مختبر INOVIE Liban
الحدث	مختبر علم الأحياء الجزيئية في الجامعة اللبنانية
الضبية	مختبر سان ميشال للتحاليل الطبية
الحازمية	مستشفى قلب يسوع
الحازمية	مختبر كلينيغان
المتن	مستشفى سرحال
المتن	مختبر ترانس ميدكال فور اليف
المتن	مستشفى مار يوسف (مركز ريموند وعائدة نجار)

Ref : Ministry of Public Health

All reports and related decisions can be found at: <http://drm.pcm.gov.lb>

Or social media @DRM_Lebanon

Haroun Hospital	مستشفى هارون	الزلفا
	مختبر مركز الشرق الأوسط الصحي ش.م.ل	بصاليه
Bellevue Medical Center (BMC)	مستشفى بلفو	المنصورية
Haykal Albert Hôpital	مستشفى هيكال	الكورة
University of Balamand	مختبر جامعة البلمند	الكورة
Centre Hospitalier du Nord (CHN)	مركز الشمال الاستشفائي	زغرتا
Saydet Zghorta University MC	سيده زغرتا - المركز الجمعي الطبي	زغرتا
Family Medical Center - Zghorta	المركز العائلي الطبي	زغرتا
Mazloum Hospital	مستشفى المظلوم	طرابلس
Al Mounla Hospital	مستشفى المنلا	طرابلس
Nini Hospital	مستشفى النيني	طرابلس
LMSE	مختبر ميكروبيولوجيا الصحة والبيئة، المعهد العالي للدكتوراه، الجامعة اللبنانية	طرابلس
Islamic Hospital	المستشفى الإسلامي الخيري	طرابلس
Dar Chifaa Hospital	مختبر مستشفى دار الشفاء	طرابلس
Secours des Dame-Notre - CHU	مستشفى سيده المعونات الجامعي	جبيل
Boulos & Akiki Lab	مختبر عقيقي وبولس	جبيل
Wakim Centre Médical	مختبر واكيم	جونية
Elite Medical Center	مختبر إيليت الطبي	جعبتا
Hospital Wzein Ain	مستشفى عين وزين	الشوف
Eva Lab	مختبر إيفا لاب	عرمون
UMC Hospital Hammoud	مستشفى حمود الجامعي	صيدا
Al Karim Medical Laboratory (KML)	مختبر الكريم	صيدا
Al Labib Medical Center	مركز لبيب الطبي	صيدا
	مختبر الـ Lebanese Diagnostic Center	صور
Family Medical Laboratories	مختبر العائلة	الغازية
Hospital Harb Ragheb Sheikh	مستشفى الشيخ راغب حرب	النبطية
SDC (Center Diagnostic Sabbah)	مختبر الصباح	النبطية
Al Salam Laboratories	مختبر السلام	النبطية
Hopital Du Secours Populaire	مختبر مستشفى النجدة الشعبية	النبطية
Jabal Amel Hospital	مستشفى جبل عامل	صور
Mashrek Diagnostic Center (MDC)	مختبر المشرق للتشخيص الطبي	صور
Dar Al Hikmah Hospital	مستشفى دار الحكمة	بعلبك
Hospital University Dar Al Amal	مستشفى دار الأمل الجامعي	بعلبك
Medical Care Laboratories - Baalbek	مختبرات العناية الطبية	بعلبك
Medical Care Laboratories - Labweh	مختبرات العناية الطبية	اللبوة
Tal Chiha Hospital	مستشفى تل شيجا	زحلة
Hospital General Khoury	مستشفى خوري	زحلة
MCC (Center Care Medical)	مختبر ميديكال كير سنتر	زحلة
Hopital Libano-Francais	المستشفى اللبناني الفرنسي	زحلة
Hopital Reyak	مستشفى رياق	رياق

مختبرات المستشفيات العسكرية

Hôpital Central Militaire	المستشفى العسكري المركزي في بيروت	بيروت
---------------------------	-----------------------------------	-------

المختبرات المؤهلة لأخذ عينات "المسحات الأنفية" بطريقة Drive-Thru

Medical Diagnostic Treatment Center (MDTC)	مختبر ميديكال دياغنوستك تريتمنت سنتر (الحمراء)	بيروت
ALS CIC SAL Med-Lab	مختبر ميد لاب الحمراء - الجقيفور	بيروت
Itani Medical Laboratories	مختبرات عيتاني	بيروت
Sakiet Al Janzir Laboratories	مختبر ساقية الجنزير	بيروت
ABC Laboratories	مختبر أ ب سي	الأشرفية
Mouawad Medical Laboratory	مختبرات معوّض الطبية	الشياح
Rihan Medical Center	مختبرات الشياح (د. فؤاد ربحان)	الشياح
United Healthcare Center	مختبرات المتحدة للرعاية الصحية	الشياح
Al Naqaa Medical Center	مختبر النقاء الطبي	الأوزاعي
Laboratoire le Boulevard	مختبرات البولفار	بدارو
CHU Al Youssef	مركز اليوسف الاستشفائي التعليمي	حلبا
Hopital El Koura	مستشفى الكورة	الكورة
Kesserwan Medical Center	مركز كسروان الطبي	كسروان
Lab Expert	مختبر إكسبرت لاب	المنصورية
Saint Elie Laborator	مختبر سانت إيلي	انطلياس
BMP Laboratory	مختبر ب م ب	ذوق مصبح
Laboratoire Dr. Elie Taleb	مختبر الدكتور إيلي طالب	جونية
MEMER Leb	مختبرات الشرق الأوسط للتحاليل الطبية	جونية
Family Clinic	مختبر فاميلي كلينيك	صيدا

Ref : Ministry of Public Health

All reports and related decisions can be found at: <http://drm.pcm.gov.lb>

Or social media @DRM_Lebanon

First Lab	مختبر فيرست لاب	العاقبية
Riyad Medical Laboratories	مختبرات الرياض الطبية	جب جنين
ADC	مختبر مركز التشخيص الطبي	جب جنين
LAB Life	مختبر لايف لاب	بعلبك
Beqaa Medical Lab	مختبر مركز البقاع الطبي	زحلة
Laboratoires Saint George	مختبرات السان جورج	زحلة
Araihi Medical Laboratories	مختبرات العريبي الطبية	رياق
Beqaa Hospital Laboratories	مختبر مستشفى البقاع	البقاع

Ref : Ministry of Public Health

All reports and related decisions can be found at: <http://drm.pcm.gov.lb>

Or social media @DRM_Lebanon