



Beirut Port Disaster Situation Report #3

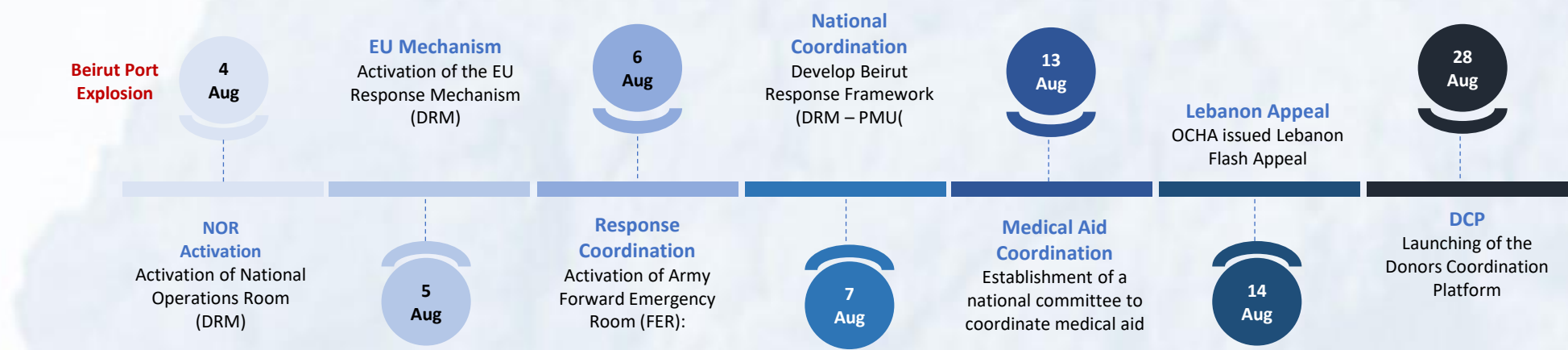
13 September 2020

The weekly situation report addresses the public at large and provides highlights of the different aspects of Response to Beirut Port Disaster being done by different national and international stakeholders in terms of mobilization and coordination of resources to meet affected peoples' needs.



The Lebanese Government Response Plan aims at saving lives; providing immediate basic assistance to all affected people; restoring life conditions in the affected areas and implementing a national recovery plan including health, economy, education, social and environment sectors.

○ KEY MILESTONES



○ HIGHLIGHTS

- To date,18,395 (74.8%) damaged houses in the affected areas are being assessed by different partners in collaboration and coordination with the Forward Emergency Room (FER).
- Since the beginning of response, 24,907 individuals were reached out with basic assistance services by the Lebanese Red Cross (LRC).
- 240 families will benefit from a monthly food parcel provided by the Ministry of Social Affairs (MOSA and its partners).
- The Lebanese Red Cross (LRC) will introduce direct cash support to affected populations for up to 10,000 families within 2 to 4 weeks.
- 7,062 Waterproof kits distributed for shelters in the affected areas since the beginning of the response (OCHA, SitRep#10).
- A total 5,740 buildings assessed for WASH interventions; water supply re-established to 1,662 households; 7,989 people reached since the beginning of the response (OCHA, SitRep#10).
- 26 water tanks installed at two of the damaged hospitals (Quarantina and Wardiya) closest to the explosions’ site, with another 50 to be installed at Geitawi Hospital (OCHA, SitRep#10).
- A total of 61 tones of cement were distributed by the FER through 3 NGOs.
- The United Nations Development Program (UNDP) is carrying out basic restoration work for 75 housing units, securing 300 job opportunities in the affected communities through the cash-for-work mechanism.
- The UN Flash Appeal issued on 14 August, is seeking US\$344.5 million, of which 17% were secured for food security (\$17,674,151), health (\$4,114,212), shelter (\$1,930,361) and protection (\$101,362). OCHA SitRep#10.
- Until September 10, 2020, the LRC has accomplished19,210 assessments for affected shelters.
- Since the beginning of response, the Lebanese Red Cross (LRC) has provided support to 143,755 persons. During the last 24 hours, LRC has served 5,355 persons affected by the blast (LRC report – 11.9.2020).

○ INTERNATIONAL AID

Countries Direct Support

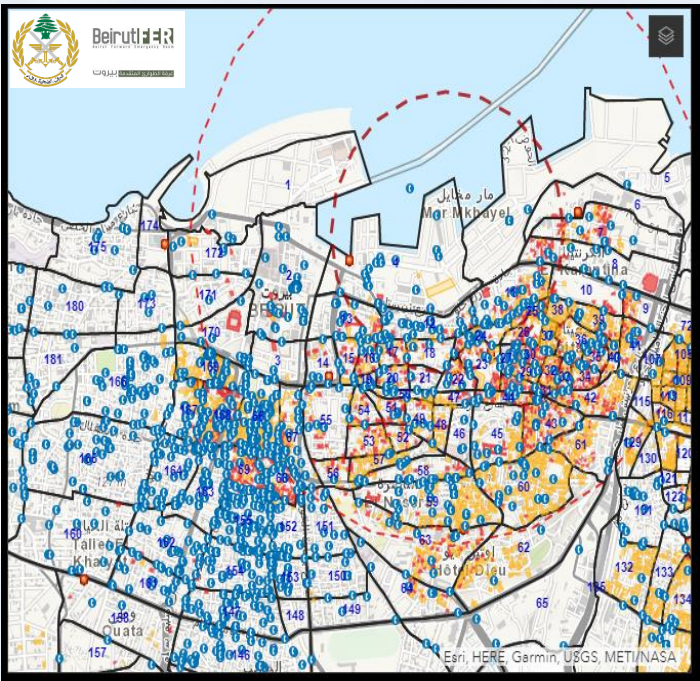
The International Community continues to support Lebanon to withstand the impact of Beirut Port explosion namely in the health, food security and shelter sectors (Details about type of donation per country are available on the Donors’ Coordination Platform <https://dcp.pcm.gov.lb>



○ SHELTER

The Forward Emergency Room (FER) lead by the Army has split the affected area into 188 zones covering the explosion area and its surroundings.

Total Number of houses assessed	18,395
No. of restored houses	735
No. of houses evacuated	66
No. of houses under restoration	598
% of houses covered with detailed assessment till date	74.8%
30 NGOs are collaborating with Beirut FER are contributing to assessing and restoring shelters: AA Stouh Beirut, AAmal Tanmawi Bila Houdoud, Abniat el Masaraf, Ahla Fawda, Alliance Church, AVSI, Beib w Chebbak, Beit El Baraka, Common Effort, DPNA, DT Care, Farah Social Foundation, Free Church Beirut (FEC), IOCC, LOT, Makassed Philanthropic Islamic Association of Beirut, Nawraj, Nusaned, Offre Joie, Orionand partners (Be Beirut Organization), Ousaned, Rachet Kheir, Sar Badda, Solidarites International, Son of Man, Tanmiyat Beirut, UNDP, World Vision, WPF, Lions.	



12,352 food parcels were distributed by LRC for families in the affected areas.

LRC report – 11.9.2020

Minor repairs were done for 20 households and rehabilitation was done for 1,122 households since the beginning of response.

16 organizations provided 5,140 households with shelter assistance over the past week. Shelter weatherproofing kits distributed to 1,071 households.

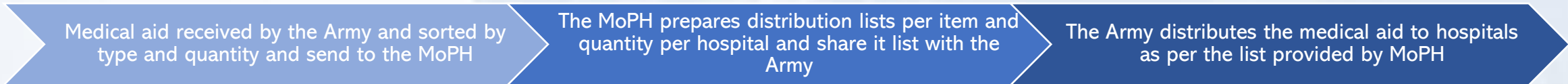
OCHA, SitRep#10 – 9.9.2020

HEALTH

- 23,356 individuals were reached out since the beginning of response by LRC with primary healthcare services including treatments at the mobile medical units, psychosocial support, awareness, trainings, and treatment at health centers (LRC report -11.9.2020).
- Up to 600,000 children could suffer from some form of psychological shock/distress (UNICEF).
- MOSA has provided 1200 new medical consultations, 90 psychological support intervention and 75 child protection activity through its development centers.
- During last week, 4.999 medical consultations were made, 358 patients were reached out with medical services, 232 women and girls supported with sexual and reproductive health consultations, 39 elderly received nursing care, medical consultations and referral support (OCHA SitRep#10).
- WHO is supporting three Emergency Medical Teams (EMTs) to conduct infection, prevention and control trainings at six public hospitals across Lebanon (Bouar, Dahr ElBachek, Saida, Baabda, Tripoli, and Halba).
- Amel, UNICEF, IMC and SAMS distributed 10,388 pieces of personal protective equipment (PPE), including face masks and hand sanitizers to volunteers and community residents (OCHA SitRep#10).
- WHO is in the last stages of a complete restoration of the Ministry of Public Health’s (MoPH) central drug warehouse (CDW), doubling its storage capacity and upgrading its equipment (OCHA SitRep#10).
- 7 Field Hospitals are providing medical support supported by Morocco Army, Italian Army, IRAN Red Crescent, Qatar Army, Poland EMT PCPM (COVID Support), UK EMT, Samaritan’s Purse EMT .
- Caritas has provided 455 medications, 52 consultations and reached to 98 patients in the primary health care.

Medical Aid distribution mechanism

The National Committee to Coordinate Medical Aid at the Presidency of the Council of Ministers supervises the medical aid distribution mechanism and is creating an interactive platform to track medial aid/needs on regular basis.



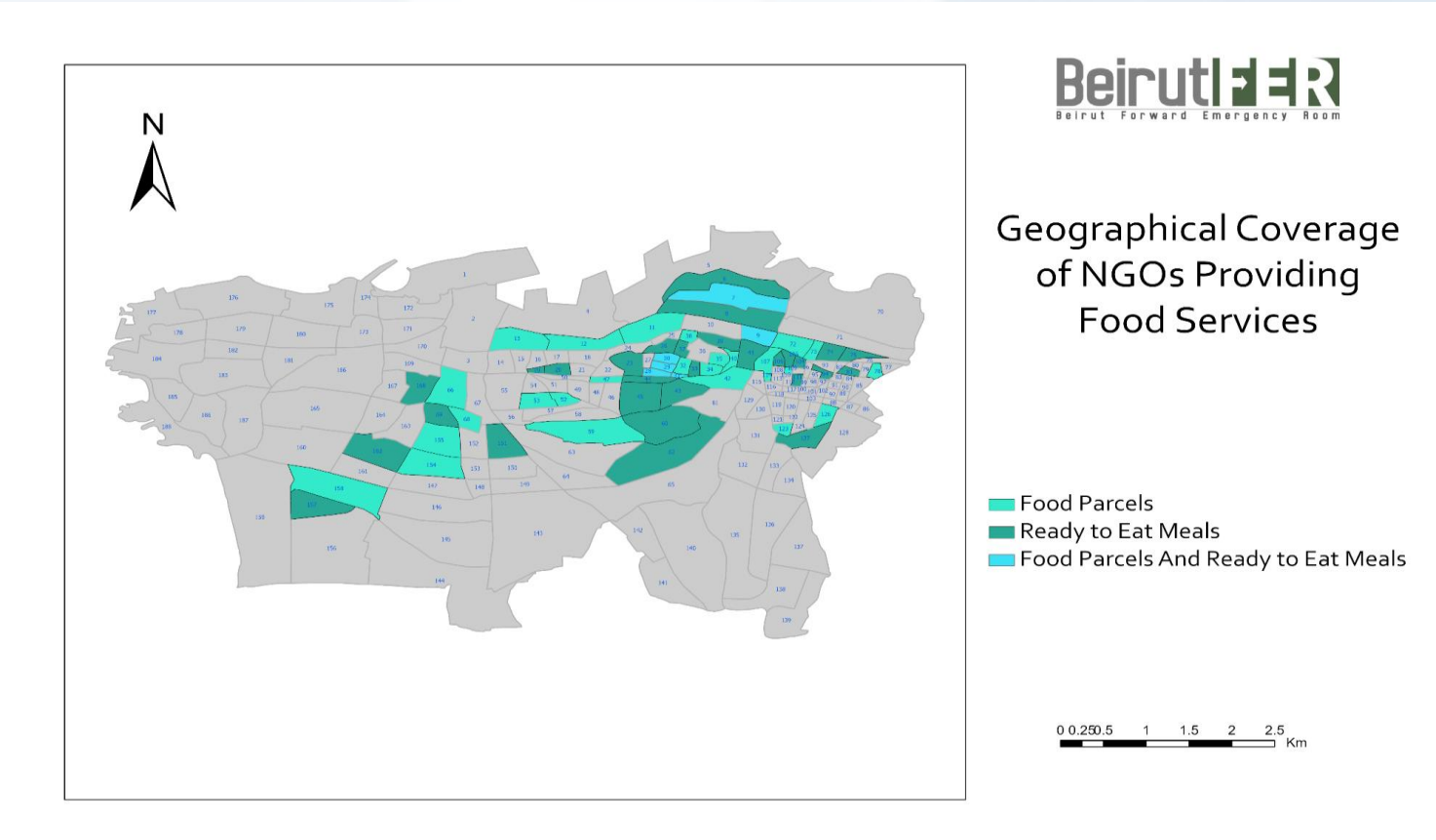
Medical Support to Hospitals

Since the beginning of response, 73 public and private hospitals have received 87 medical kits including medical supplies, medicines and equipment donated by different countries were distributed to public and private hospitals.

Public & Private Hospitals			
Nabaityeh	Belle View	Mount Lebanon	Saint Louis
Baabda	Al Azouniyeh	Saint George - Hadath	Labib
Ftough Kesserwan	AUB	Al Burj	Tal Chiha
Sebline	Al Mashrek	Al Rassoul	Alfa
Bcharri	Al Makassed	Al Jeeitawi	Bekaa
Batroun	Al Wardieh	Behmen	Chtura
Zahle	Haroun	Al Sahel	Jwaya
Tebnin	Lady of Lebanon	Al Zahraa	Al Maounat
Tripoli	Osseiran	Risk	Mazboud
Saida	Ain W Zein	Dahr El Bashek	Al Salam
Hermel	Saint Charles	Sacred Heart	Dar El Amal
Abdalla El Rassi	Serhal	Hotel Dieu	Haykal
Rashaya	Orange Nasso	Al Hayat	Saint Martine
Baalbeck	Middle East	Saint Georges – Roum	Kamal Jumblatt
Shahar El Gharbi	Clemenceau CMC	Saint Joseph	Rayyak
Marjeyoun	Al Monla	Salah Ghandour	Ragheb Harb
Sir El Donniyeh	Al Hayek	Abou Jawdeh	Al Sayde Zgharta
Jezzine	Saint Therese	Al Batoul	Saint George
Al Bekaa El Gharbi			

FOOD SECURITY

- A total of 48,129 food parcels distributed through Beirut Forward Emergency Room (23,329 new parcels during reporting period).
- 12,352 food parcels were distributed by the LRC to families in the affected areas.
- 240 food parcels are distributed monthly by MOSA to affected families in the explosion area
- WFP shipment of 12,500 metric tons of wheat flour has been completed in response to the loss of 15,000 metric tons of grain stocks stored in the silos affected by the explosion.



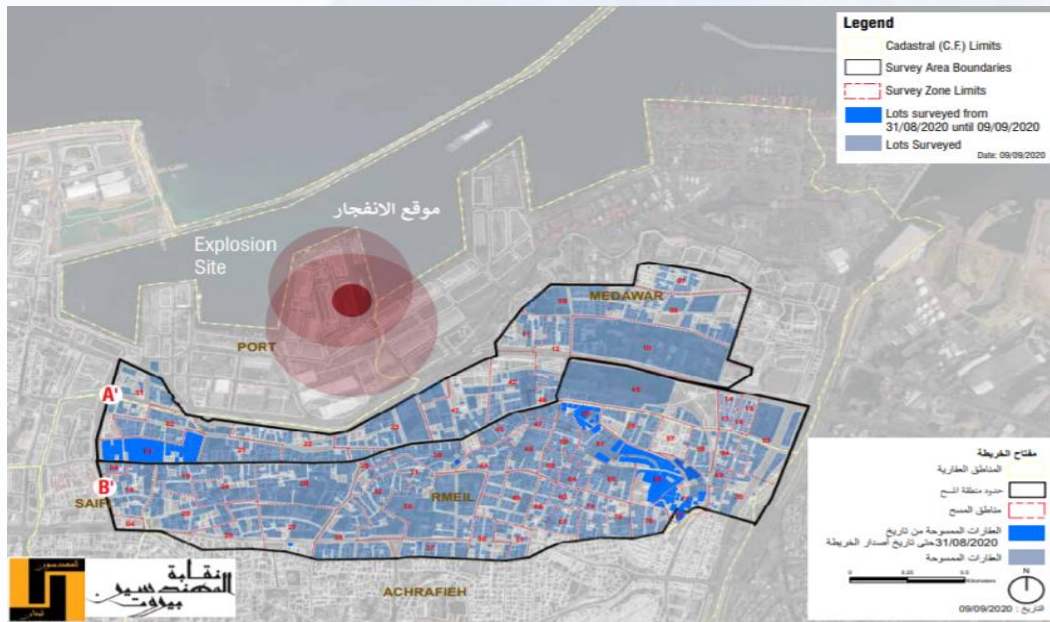
42 NGOs are collaborating with Beirut FER in distributing food parcels:

Ahbab al khayr al ejtima3iya, AntiRacism Movement, Arc En Ciel, Banin, Bayti Ana Baytak, Beit al 3ineye al llehiye, Chababik, CHREEK, Common Effort, Compassion Protestant Society, Ensan, Esteklal El Khayriyye, Irchad & Islah, Jabha ejtime3iye/jam3iyet dad, Jam3iyat Aamal Tanmawi Bila Houdoud, Jannnat Bladi Foundation, Jeunesse Etudiante Chretienne, Jouzourouna, Kanisat Al Fadi Al Maamadaniye, El Jarrah Scouts, El Mabarrat Scouts, Kelna Ayle, Koun ljabi, Lebanon of tomorrow, Lions, Little Push, LRC, El Jarrah Guides, MSD, Nation Station, NDML, Nusaned, OMNI Games Of Beirut, Rabitat Abnae Bayrout, Rabtitat Al Nisae, Rachet Kheir, Sada Assosiation, Sawa for Development & Aid, Son of Man, The Youth Of Order Of Malta Lebanon, Wehdet al Mojtama3 and World Vision

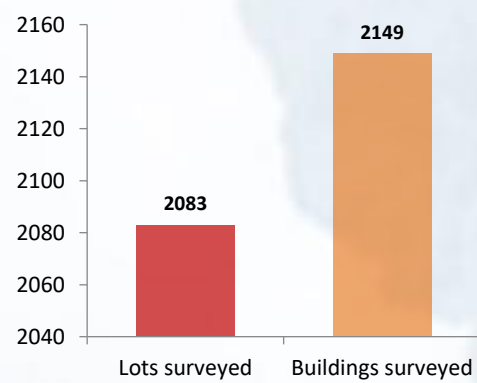
DAMAGE ASSESSMENT

Buildings Damage Assessment

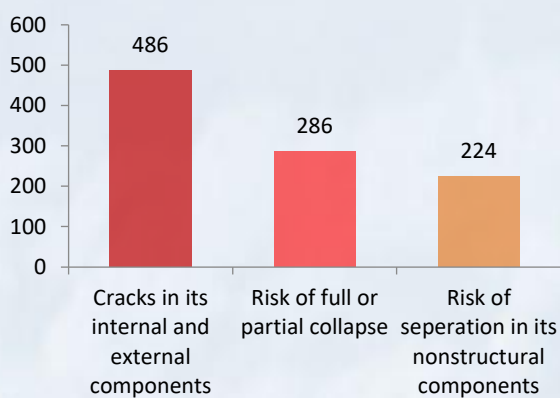
BEIRUT EXPLOSION: BUILDINGS' WEEKLY ASSESSMENT REPORT by the Order of Engineers and Architects in collaboration with FER, Beirut Governorate and the Municipality. Report no.3 dated 09/09/2020.



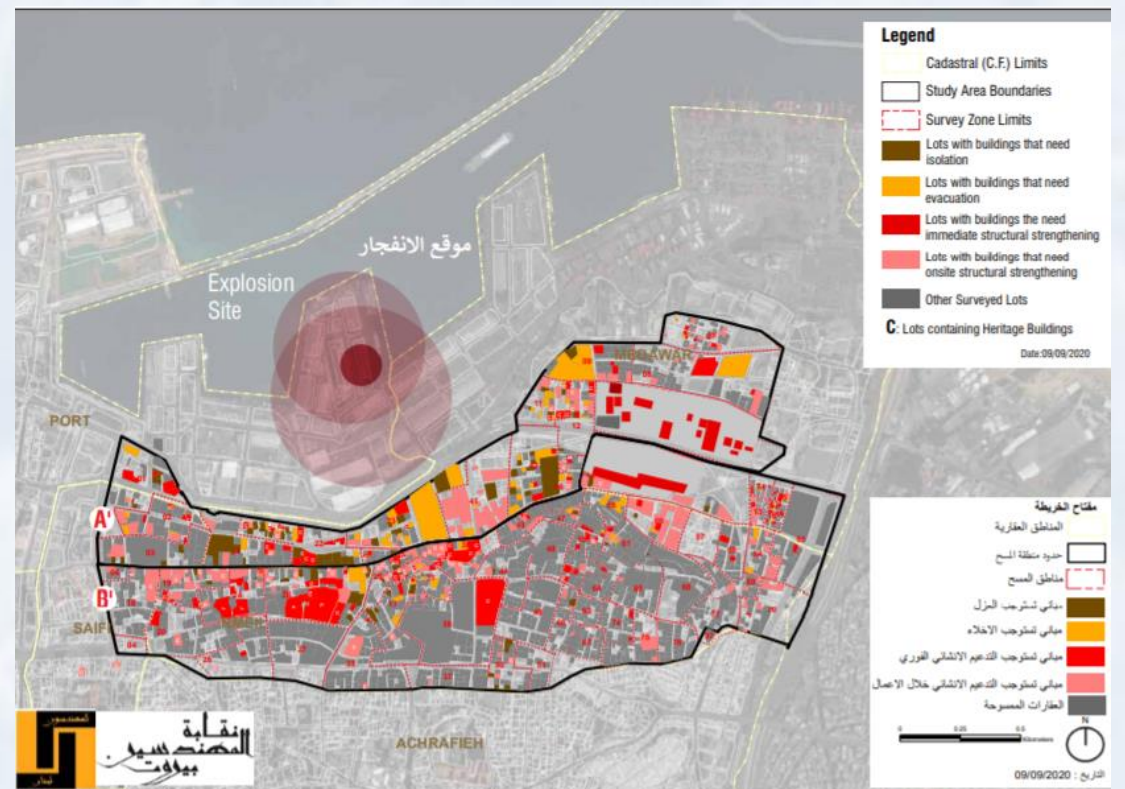
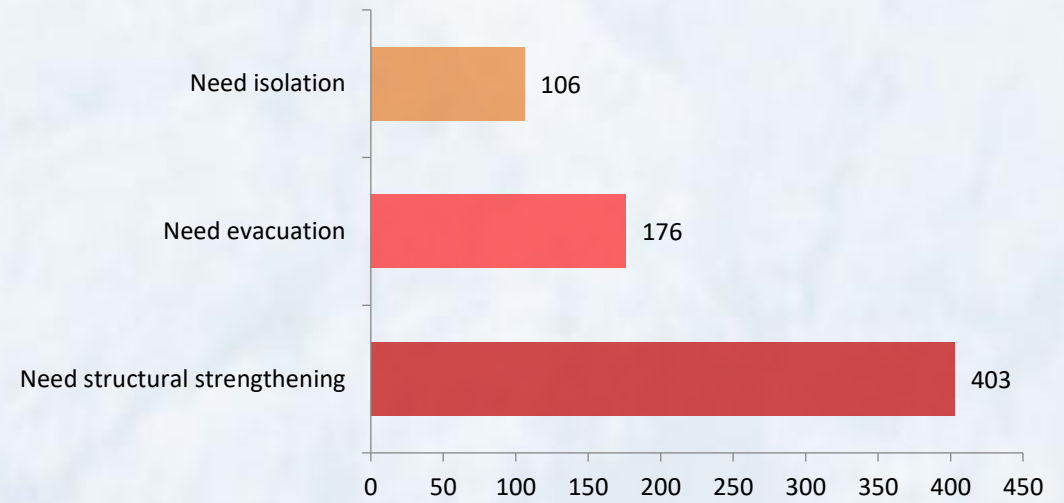
Total lots and buildings surveyed: 4,232



Total number of surveyed buildings : 2149



Recommendations for surveyed buildings



COORDINATION WITH NGOS

409 active organizations are registered within the Forward Emergency Room (FER) platform to coordinate the field intervention in the various response sectors.

How to Register

1. Fill NGO Registration form online or contact the FER call center
2. Prepare required documents:
 - Mandatory Documents (Notice of recognition, 2020 statement of the Ministry of Interior and Municipalities.
 - Original documents of the NGO (reference at the Ministry of Finance, official bank account).
3. Submit the documents at the FER headquarter located at Beirut Municipality (1st floor)

How NGOs can cooperate

1. Fill NGO Registration form online or contact the FER call center
2. Update on any changes
3. Update on Challenges and Needs
4. Handling of Job Requests
5. Constant reporting
6. Planning of special initiatives together with the FER

FER Received a total of 4506 calls for needs, supplies, complaints, and Q&A

Requested Needs Per Sector

